

# **BEAUMONT BASIN WATERMASTER**

For

SAN TIMOTEO WATERSHED MANAGEMENT AUTHORITY

V.

CITY OF BANNING, ET AL  
(CASE NO. RIC 389197)

## **FOURTH ANNUAL REPORT OF THE BEAUMONT BASIN WATERMASTER FY 2006-07**



**December 2007**

# **BEAUMONT BASIN WATERMASTER**

For

SAN TIMOTEO WATERSHED MANAGEMENT AUTHORITY

V.

CITY OF BANNING, ET AL  
(CASE NO. RIC 389197)

## **FOURTH ANNUAL REPORT OF THE BEAUMONT BASIN WATERMASTER**

**FY 2006-07**

**December 2007**

TABLE OF CONTENTS

	Page
OVERVIEW OF JUDGMENT AND WATERMASTER	
Background and History .....	4
Responsibilities of the Watermaster .....	4
Mission Statement.....	5
Watermaster Committee Representatives .....	6
ACTIVITIES OF WATERMASTER	
Meetings.....	6
Watermaster Address .....	7
ADMINISTRATION OF THE JUDGMENT	
Precipitation in the Beaumont Basin.....	7
Accounting for Production, Recharge, Transfers and Storage.....	7
Active Party List .....	9
Annual Administrative Budget .....	9
Annual Audit.....	9
Annual Assessments .....	10
Employment of Experts and Agents .....	10
Meter Installation .....	10
Resolutions.....	10
Rules and Regulations.....	10
Storage Management and Use.....	10
Subsidence Monitoring .....	12
Watermaster Website .....	12
Well Standards .....	12



TABLE OF CONTENTS

LIST OF TABLES

Table 1. Summary of Annual Production from the Beaumont Basin

Table 2. Summary of Appropriator Storage Account Balances as of July 1, 2007

LIST OF FIGURES

Figure 1. Annual Precipitation with Cumulative Departure From Mean

Figure 2. Location Map of Wells in the Beaumont Basin

APPENDICES

Appendix A – Summary of Production, Recharge, Transfers, and Storage in the Beaumont Basin

1. Appropriator Producer Summary of Production for Fiscal Year 2006/07
2. Overlying Producer Summary of Production for Fiscal Year 2006/07
3. Reconciliation of Production and Storage Accounts
4. Amended FY 2003/04 Appendix E-2
5. Amended FY 2003/04 Appendix E-3
6. Amended FY 2004/05 Appendix E-2
7. Amended FY 2004/05 Appendix E-3
8. Amended FY 2005/06 Appendix A-3

Appendix B – Active Party List

Appendix C – Adopted Budget

Appendix D – Letter - Annual Audit



# OVERVIEW OF JUDGMENT AND WATERMASTER

## Background and History

In January 2001, based on a common interest in the San Timoteo Watershed, the Beaumont Cherry Valley Water District (BCVWD), the City of Beaumont (Beaumont), the South Mesa Water Company (SMWC), and the Yucaipa Valley Water District (YVWD) formed the San Timoteo Watershed Management Authority (STWMA). Once formed, the STWMA began a watershed-wide, multi-phase effort to develop and implement a comprehensive San Timoteo Watershed Management Program (STWMP). Phase 1 included developing a description of the area's water resources, establishing goals concerning the needs and issues identified in order to protect and enhance these resources, and affirming a management plan to accomplish the goals. This is documented in the San Timoteo Watershed Management Program, Phase 1 Report (March 2002) and its successor, the updated and re-titled Integrated Regional Water Management Program (IRWMP) for the San Timoteo Watershed (June 2005). The goals established in Phase I include:

- Enhancing basin water supplies.
- Protecting and enhancing water quality.
- Optimizing the management of the STWMA area groundwater basins.
- Protecting riparian habitat in San Timoteo Creek and protect/enhance habitat in the STWMA area.
- Equitably distributing the benefits and costs of developing the IRWMP for the San Timoteo Watershed.

The Phase 1 report also identified the initiatives or program elements necessary to achieve these goals. Program Element 5 called for the STWMA members to establish a groundwater management entity for the Beaumont Basin. Two groups representing appropriator and overlying interests began negotiations in May 2002 to implement this program element.

A Stipulated Judgment was developed and submitted to the Court as a result of the negotiations. The Honorable Judge Gary Tranbarger of the Superior Court of the State of California for the County of Riverside, signed the Stipulated Judgment titled "*San Timoteo Watershed Management Authority, vs. City of Banning, et al.*," Case No. RIC 389197, on February 4, 2004. Pursuant to the Judgment, the Court appointed a five-member Watermaster committee, consisting of representatives from the Cities of Banning and Beaumont, the BCVWD, the YVWD, and the SMWC. The effective date of the Judgment for accounting purposes is July 1, 2003. The Beaumont Basin encompasses approximately 26 square miles and has a safe yield of approximately 8,650 acre-ft, a total storage capacity of over a million acre-ft, and up to 200,000 acre-ft of storage capacity available for conjunctive use.

The Court extended much of the responsibility regarding the management of the Beaumont Basin to the Watermaster by approving the Stipulated Judgment. The Court retained continuing jurisdiction should there be any need in the future to resolve difficult questions. The primary responsibilities of the Watermaster are outlined below. A copy of the Judgment and other information regarding the Watermaster is available at [www.beaumontwatermaster.org](http://www.beaumontwatermaster.org).

## Responsibilities of Watermaster

The Beaumont Basin Watermaster is responsible for administering adjudicated water rights and managing groundwater resources in the Beaumont Groundwater Basin. With numerous Appropriators and Overlying producers that rely on the Basin, there is a need for its coordinated management, which the Watermaster provides, as summarized below.

**Administer the Beaumont Basin Judgment.** Watermaster operates under the Judgment and a formal set of Rules and Regulations (and any revisions thereto), which were adopted on June 8, 2004. Together, the Judgment and the Rules and Regulations establish the procedures by which Watermaster acts to account for the water resources in the Beaumont Basin. In order to fund its operations, Watermaster collects both administrative and replenishment assessments from the parties to the Judgment.

**Approve Producer Activities.** Producers must notify and obtain approval, as necessary, from Watermaster for activities such as producing water; recharging or spreading water; transferring or exchanging water; storing local water; and storing or recovering supplemental water.

**Develop Contracts for Beneficial Programs and Services.** Watermaster is responsible for developing and entering into contracts for programs and services that are beneficial to the Basin on behalf of the parties to the Judgment. This includes programs for conjunctively utilizing the Basin for the storage of supplemental water with other entities such as the Department of Water Resources or San Geronio Pass Water Agency and programs for the direct and/or indirect use of recycled water.

**Maintain and Improve Water Supply.** Watermaster determines the amount of groundwater that each producer is entitled to extract annually without incurring a replenishment obligation for the succeeding fiscal year. Watermaster manages and controls the replenishment of water supplies in the Basin. It acquires and spreads replenishment water as needed. And, it approves and facilitates the storage of supplemental water in the Basin.

**Maintain and Improve Water Quality.** Watermaster coordinates or participates in local efforts to preserve and restore the quality of groundwater in the Basin. It assists and encourages regulatory agencies to enforce water quality regulations that affect the Basin.

**Monitor and Understand the Basin.** Watermaster collects relevant data from producers including production, water level, water quality, and other data. Watermaster uses these data to expand its knowledge of how the Basin works to manage it more effectively. It prepares an annual report of Watermaster operations, including financial and engineering information, as well as summary reports for the Court and all other interested parties.

**Provide Cooperative Leadership.** Watermaster helps develop and implement plans regarding the management of the Basin.

In summary, Watermaster, in carrying out its duties, is responsible for providing a legal and practical means for making the maximum reasonable beneficial use of the waters of the Basin; facilitating the conjunctive utilization of surface, ground and supplemental waters; and satisfying the requirements of water users that have rights in the Basin or that are dependent upon the Basin.

## **Mission Statement**

Watermaster adopted Resolution 2004-06 entitled “*Resolution of the Beaumont Basin Watermaster Adopting a Watermaster Mission Statement and Supporting Principles*” at its October 19, 2004 meeting. The Watermaster’s mission statement is as follows:



*"Watermaster's mission is to manage the yield of and storage within the Beaumont Basin to provide maximum benefit to the people dependent on it".*

## Watermaster Committee Representatives

The Parties to the Judgment did not designate new representatives during the fiscal year. Pursuant to Part VI, Paragraph 4 of the Judgment, (pg. 16 – 17), Watermaster Committee representatives were nominated by the Cities of Banning and Beaumont, the BCVWD, the YVWD, and the SMWC. The Court received and approved the nominations on March 8, 2004.

The Committee Representatives, who are all employees or consultants of their nominating agencies, are as follows:

Banning, City of	Paul Toor, Director of Public Works
Beaumont, City of	Deepak Moorjani, Director of Public Works
Beaumont Cherry Valley Water District	Charles Butcher, General Manager
South Mesa Water Company	George Jorritsma, General Manager
Yucaipa Valley Water District	Joseph B. Zoba, General Manager

## ACTIVITIES OF WATERMASTER

### Meetings

The Beaumont Watermaster met quarterly to transact Watermaster business during its fourth year of operation under the Judgment. Two special meetings were called in addition to the regularly scheduled quarterly meetings. Meetings were held at the City of Banning City Hall, located at 99 East Ramsey, Banning, California 92220, unless otherwise noticed. Meetings of the Watermaster Committee were held on:

September 12, 2006  
January 09, 2007  
February 13, 2007  
March 13, 2007  
May 15, 2007 (at YVWD offices)  
June 19, 2007

The Committee Officers continued to serve as they had in the previous year as follows:

Chairman	George Jorritsma
Vice Chairman	Deepak Moorjani
Secretary	Charles Butcher
Treasurer	Joseph B. Zoba

Mr. J. Andrew Schlange continued to serve as the Chief of Watermaster Services, Mr. Joseph S. Aklufi continued as the Watermaster's Legal Counsel, and Mr. Mark Wildermuth of Wildermuth Environmental, Inc (WEI) continued as the Watermaster Engineer.





The Watermaster continued with administering and implementing the Judgment during its fourth year of operation, as discussed in more detail below by subject matter. Copies of the agendas and approved minutes of each of the above meetings can be viewed or downloaded on the Watermaster website ([www.beaumontwatermaster.org](http://www.beaumontwatermaster.org)).

In addition to the formal Watermaster Committee meetings listed above, informal meetings were held regarding the potential for cooperative efforts among the parties and others for use of the Basin. Informal meetings were held or attended by the Chief of Watermaster Services, members of the Watermaster Committee, the Watermaster Engineer, the Watermaster Legal Counsel, and others such as representatives from the Department of Water Resources (DWR), San Geronio Pass Water Agency (SGPWA), and other potential users of the Basin's storage capacity.

### **Watermaster Address**

For the purposes of conducting Watermaster business and maintaining records, Watermaster's official address remains as follows:

Office of the Watermaster Secretary  
C/O Beaumont-Cherry Valley Water District  
560 Magnolia Avenue  
Beaumont, CA 92223

## **ADMINISTRATION OF THE JUDGMENT**

### **Precipitation in the Beaumont Basin**

The annual precipitation in the City of Beaumont from 1920 to 2007, as measured by the County of Riverside's Beaumont Station 013, is shown in Figure 1. Figure 1 also displays the cumulative departure from the mean (CDFM) precipitation. The CDFM plot is a useful way to characterize the occurrence and magnitude of wet and dry climatic periods, where a positive slope indicates a wet period, and a negative slope indicates a dry period. The variability of annual rainfall in the Beaumont region led to several prolonged periods of wet and dry weather. The most notable of these periods is the dry period from 1946 to 1977, which is punctuated with only a few years of high rainfall. Since the creation of the Watermaster, the Beaumont region has experienced a short wet period (2003-2005) followed by two dry years. The average precipitation in the City of Beaumont is about 17.6 inches. The precipitation during fiscal 2006/07 was 5.6 inches, which is second the lowest recorded precipitation in the City of Beaumont area over the last 88 years, second only to fiscal 2001/02 which experienced a total rainfall of 5.2 inches.

### **Accounting for Production, Recharge, Transfers and Storage**

One of Watermaster's primary responsibilities is to account for production from the Beaumont Basin. Producers who pump less than 10 acre-ft per year, otherwise known as minimal producers, are exempt from the provisions of the Judgment unless otherwise ordered by the Court (Part III, Paragraph 4, pg. 12). Therefore, Watermaster does not collect production





information from minimal producers other than those participating in the Judgment. A location map of the wells in the Beaumont Basin is shown in Figure 2.

There are five Appropriative Producers participating in the Judgment: the cities of Banning and Beaumont, the BCVWD, the SMWC, and the YVWD. An Appropriator's annual production right consists of:

- “the Appropriator's share of operating safe yield, plus
- (1) any water acquired by an Appropriator from an Overlying Producer or other Appropriator pursuant to the Judgment,
- (2) any water withdrawn from the Appropriator's storage account, and
- (3) New Yield created by the Appropriator” (Part I, Paragraph 3B, pg. 2).

An Appropriator's annual production right represents the maximum quantity of water said Appropriator can produce from the Beaumont Basin each year without incurring a replenishment obligation. It includes the Appropriator's share of the temporary surplus (Part I, Paragraph 3M, pg. 4). Temporary surplus is defined in the Judgment as “the amount of groundwater that can be pumped annually in excess of safe yield from a groundwater basin necessary to create enough additional storage capacity to prevent the waste of water” (Part I, Paragraph 3BB, pg. 6). The temporary surplus in the Beaumont Basin may not exceed 160,000 acre-ft over a 10 year period, or 16,000 acre-ft per year (Exhibit C of the Judgment).

Appendix A-1 shows the monthly production of each Appropriator for fiscal 2006/07. It also shows each Appropriator's total annual production, their projected share of the operating safe yield from Exhibit C of the Judgment, and the amount of unused water that is projected to be eligible for storage. Pursuant to the Judgment (Part I, Paragraph 3B, pg. 2), and a separate agreement that is on file with the Watermaster, the BCVWD continued to pump water for Banning during the fiscal 2006/07. The amount of water pumped to Banning is also shown in Appendix A-1.

Producers who use water on the overlying land from which they extract water are called Overlying Producers. Overlying Producers are assigned a share of the Basin's safe yield and may not use more than five times their share of safe yield in any five year period (Part II, Paragraph 1A, pg. 6). Production estimates for Overlying Producers for the fiscal 2006/07 are provided in Appendix A-2. At the September 2005 Watermaster meeting, the Watermaster engineer reported that several of the Overlying Producer wells were not metered, or that their meters may not have been working properly. The Watermaster engineer recommended using a water duty method that is routinely used to estimate production in the absence of metered production. The water duty method estimates production based on the type of use and the total acreage to which water was applied. The Watermaster committee members concurred and requested that revised production estimates be developed for prior years as appropriate and brought back for discussion.

Revised production estimates were discussed at the January 10, 2006, Watermaster meeting. The Watermaster accepted these production estimates and concurred with their use in Appendix A-2, subject to the receipt of more accurate information from the affected Overlying Producers. A letter was sent to the affected Overlying Producers, informing them of these revised production estimates and requesting more accurate information, if available, within 60



days. Watermaster did not receive any responses to the letter. A summary of annual production from the Beaumont Basin by producer is shown in Table 1.

Appendix A-3, which is new to this year's report, is a reconciliation of the Appropriator groundwater pumping, supplemental water recharge, local water recharge, transfers, and storage accounts. During the current fiscal year, there were no demonstrations of the recharge of local waters provided to the Watermaster. The BCVWD recharged 6,462 acre-ft of State Water Project water with its new recharge facilities. The SMWC transferred 1,500 acre-ft each to the City of Banning and the BCVWD. This required a debit of 3,000 acre-ft to the SMWC storage account. At the beginning of fiscal 2006/07, the total water in storage accounts was about 13,216 acre-ft. At the end of fiscal 2006/07, the volume of water in storage accounts was about 20,176 acre-ft. No Appropriator party incurred a replenishment obligation.

Appendices A-4 and A-6 contain revisions to prior years' reported production (03/04 and 04/05, respectively) for the Appropriator parties. Appendices A-5, A-7 and A-8 contain revisions to prior years' reported production (03/04, 04/05, and 05/06 respectively) for Overlying producers. These revisions are based on more accurate information obtained from the producers during this fiscal year. All updated values have been accounted for in Appendix A-3.

Beginning in fiscal year 2008/09, and each year thereafter, any water allocated as part of the safe yield to the Overlying Producers during the prior five years that remains unused will be reallocated to the Appropriators. The unused water will be reallocated based on each Appropriator's percent share of operating safe yield as shown in Exhibit C of the Judgment. The precise accounting rules that describe how this will be achieved will to be developed in fiscal 2007/08.

Also in fiscal 2007/08, the Appropriator parties will develop rules and regulations regarding the demonstrations of new local water recharge and the crediting of new returns from use. Both of these recharge components are included in the Appropriators' Urban Water Management Plans and in the Watermaster's annual report of water demands and supplies.

## Active Party List

Under Part VII, Paragraph 1 of the Judgment, "the Watermaster shall maintain, at all times, a current list of Parties to whom notices are to be sent and their addresses for the purposes of service. The Watermaster shall also maintain a full current list of names and addresses of all Parties or their successors, as filed herein. Copies of such lists shall be available to any Person." These lists are commonly referred to as the Watermaster's "Active Party List." A copy of the list is posted on the Watermaster website and has been included as Appendix B in this annual report. The list in Appendix B also includes "interested parties" in addition to "active parties." "Interested parties" are those persons or entities that are not parties to the Judgment, but that have requested that Watermaster to include them on the Watermaster mailing list to remain current on Watermaster activities.

Under the Judgment, any Party desiring to be relieved of receiving notices of Watermaster activities can complete the Waiver of Notice and Designation of Address for Notice and Service portion of the form adopted by the Watermaster. Watermaster did not receive any Waiver of Notice requests during its third year of operation.



## **Annual Administrative Budget**

YVWD staff serves as the Watermaster Treasurer. Watermaster adopted an administrative budget for fiscal year 2006/07 at its June 13, 2006 meeting. A copy of the "Final Year End Report for the Beaumont Basin Watermaster FY 2006-2007 Budget Member Contributions and Expenses" has been included as Appendix C in this annual report.

## **Annual Audit**

Under the Judgment, Part VI, Paragraph 6(b), Watermaster's annual report of operations shall include an audit of all assessments and Watermaster expenditures. The Watermaster assessments and expenditures are shown in Appendix C as part of the annual budget. An audit of Watermaster assessments and expenditures is conducted each year. The letter received regarding the audit has been included as Appendix D in this annual report.

## **Annual Assessments**

The annual assessments are shown in Appendix C. One of the Watermaster members, SMWC, did not pay its assessments during the first two years of Watermaster operations. SMWC paid all prior assessments by the close of the fiscal year.

## **Employment of Experts and Agents**

Watermaster continued the services of the Chief of Watermaster Services, Legal Counsel, and the Watermaster Engineer during the fiscal year. Watermaster did not retain the services of any other experts or agents during the fiscal year.

## **Meter Installation**

In an effort to better monitor production from the Beaumont Basin, Watermaster entered into contracts with the BCVWD and the YVWD during fiscal 2004/05 to install meters on unmetered overlying producer wells in their respective spheres of influence. One meter was installed by BCVWD during the third year of Watermaster operations.

## **Resolutions**

No resolutions were adopted by the Watermaster during fiscal 2006/07.

## **Rules and Regulations**

Rules and regulations and forms (rules) were adopted at the June 8, 2004 Watermaster meeting. They were also included in Appendix F of the First Annual Report of the Beaumont Basin Watermaster. The rules were adopted with an understanding that proposed modifications would be considered, as necessary in fiscal 2005/06. Resolution 2006-01 entitled "*A Resolution of the Beaumont Basin Watermaster Establishing Rules and Regulations Regulating the Transfer of Water Between Appropriators*" amended Section 7 of the Watermaster Rules and Regulations to clarify the reporting requirement for the transfer of water between Appropriators. Forms 7 and 8 entitled, "*Transfer of Water Between Appropriators*" and "*Transfer of Rights to Recapture Water in Storage Between Appropriators*" respectively, were also developed for this purpose. The amended rules and forms were adopted at the February 7, 2006 special meeting of the Watermaster.

Watermaster also approved several changes to Form 2, entitled "*Groundwater Storage Agreement*" at its January 10, 2006 meeting. Copies of the amended Section 7 and of forms 2,



7 and 8 are available on the Watermaster website. The Watermaster Handbook has been updated appropriately to reflect these changes.

## Storage Management and Use

Watermaster made significant advances in the area of storage management and use during fiscal 2005/06 as follows:

- The first applications and agreements to store unpumped appropriator production rights were approved;
- Future water demand and supply conditions in the San Geronio Pass region were agreed upon and submitted to LAFCO by all relevant local entities for the first time in Pass area history; and
- Watermaster requested that the SGPWA to proceed with the implementation and construction of EBX Phase II (EBX2) to improve the local ability to import supplemental water.

Watermaster approved applications and agreements to store unused appropriator production rights from the first two years of operations for the City of Banning, the BGVWD, the SMWC and the YVWD at its March 27, 2006 meeting. These are the first such applications and agreements approved by the Watermaster since the Judgment was entered. Copies of the storage applications and agreements can be found on the Watermaster's website.

The City of Beaumont applied for a 22,000 acre-ft storage account with the Watermaster in fiscal 2006/07. The Watermaster approved this application at its June 2007 meeting. The total amount of unused storage allocated to groundwater storage accounts, as authorized by the Watermaster pursuant to the Judgment, is 157,000 acre-ft. Table 2 lists the quantities approved and the account balances for all Appropriators as of July 1, 2007.

Discussions and meetings regarding the management and use of Basin storage capacity continued during the fiscal year. In 2004, the Watermaster adopted Resolution 2004-05 entitled *"A Resolution of the Beaumont Basin Watermaster Adopting an Inventory of Water Demands and Water Supplies in the San Geronio Pass Region"*. A report entitled *"2006 Report on Water Supply Conditions in the San Geronio Pass Region"* was presented to Watermaster at its March 27, 2006 meeting. This 2006 report updated the prior report through the year 2030 with information from the local area 2005 Urban Water Management Plans. The Watermaster concurred with the findings in the updated report and authorized the Watermaster Chairman to sign a letter transmitting it to LAFCO. The transmittal letter was signed by representatives of 10 local entities. This is the first time in the history of the San Geronio Pass region that all relevant entities have agreed on the projected supplies and demands for the area. A copy of the 2006 report is available on the Watermaster's website.

Watermaster requested that the SGPWA to proceed with the implementation and construction of EBX2 with Resolution No. 2006-03, which was adopted on March 27, 2006. The EBX2 will increase the local ability to import supplemental water to the Beaumont Basin. Watermaster found it is necessary to adopt this resolution because:

- There is a pressing need to purchase imported water to offset the overdraft;
- The retail market for additional water is developing rapidly;



- The cost of construction materials, especially concrete and steel is increasing rapidly; and
- The SGPWA is not able to consummate the acquisition of imported water rights to enhance its "Table A" allocation unless it begins this process.

Watermaster recognized the need for mutual cooperation to facilitate this request and offered its support as well as the support of its member agencies when Resolution 2006-03 was submitted. The SGPWA took action on this request at its May 1, 2006 meeting.

The Watermaster, the STWMA and the Appropriator parties are continuing to work with the SGPWA and the San Bernardino Valley Municipal Water District to complete EBX2 as soon as possible and to maximize the amount of SWP water available to the SGPWA service area.

### **Subsidence Monitoring**

Subsidence monitoring was conducted by the STWMA on behalf of Watermaster during the fiscal year. Watermaster adopted Resolution 2004-07 entitled "*A Resolution of the Beaumont Basin Watermaster in Support of AB303 Grant Applications That Further the Management of the Beaumont Basin*" on November 4, 2004. Program Element 1 of the IRWMP calls for the development and implementation of a comprehensive monitoring program for the STWMA area, including the Beaumont Basin. Watermaster is concerned about the future potential for land subsidence that may occur as a result of past and future groundwater pumping from the Basin. On behalf of Watermaster, the STWMA developed a monitoring program to assess the occurrence of subsidence from past groundwater pumping and future pumping at the request of Watermaster. To implement this program, the STWMA applied for an AB303 Grant from the DWR. Watermaster agreed to provide the local matching funds if the application was successful. The application was successful and the subsidence monitoring program was initiated during fiscal 2005/06. Watermaster provided approximately one-half of the local matching funds in fiscal 2005/06 and fiscal 2006/07.

The preliminary results of the program indicate that very little, if any, subsidence has occurred as a result of historic pumping and overdraft. The historical subsidence data (survey data and remote sensing data [InSAR]) for the period of 1928 to 2000 were compiled, analyzed, and used to finalize the locations of new survey lines for monitoring future land subsidence, if any, that may accompany the future drawdown of water levels. The benchmark monuments along the survey lines were installed during the spring and summer of 2006, and the initial ground level survey was completed in November 2006. A subsequent survey was completed in March of 2007. The results of the surveys are being analyzed by Watermaster's engineer, and will be published in a separate report to the Watermaster in September 2007. This report will include recommendations for methods of future land subsidence monitoring.

### **Watermaster Website**

Watermaster established a website in February 2004, in an effort to communicate the activities of Watermaster to the parties and the public. The website is a place where anyone can obtain or review copies of the Judgment, the Rules and Regulations, meeting agendas, and meeting minutes. A new host for the website was procured, and the website was revised and updated during the fiscal year. The website will continue to evolve and include additional relevant information as Watermaster continues to manage the Beaumont Basin and administer the Judgment.



## Well Standards

No changes were made to the Beaumont Basin Well Policy during the fiscal year. The Well Policy in effect was adopted as Resolution 2004-04 entitled "*A Resolution of the Beaumont Basin Watermaster Adopting Minimum Standards for the Construction, Reconstruction, Abandonment and Destruction of Groundwater Extraction Wells*" at the July 20, 2004, Watermaster meeting. With Resolution 2004-04, the Watermaster Committee adopted the existing Riverside County Ordinance No. 682.3 and expanded it by requiring the installation of a "sounding tube" to facilitate the measurement of water levels on all wells constructed after July 20, 2004 in the Beaumont Basin.



**Table 1**  
**Summary of Annual Production from the Beaumont Basin**

Producer	Fiscal Year Production (acre-ft)			
	2003/04	2004/05	2005/06	2006/07
<b>Appropriator</b>				
Banning	3,951	2,420	1,768	2,046
Beaumont	0	0	0	0
Beaumont-Cherry Valley WD	6,204	6,386	7,625	10,455
South Mesa Water Co.	420	558	632	691
Yucaipa Valley Water District	2,005	1,284	1,530	2,309
<b>Subtotal</b>	<b>12,580</b>	<b>10,649</b>	<b>11,555</b>	<b>15,502</b>
<b>Overlying Producer</b>				
Beckman, Walter M.	27	27	83	93
California Oak Valley Golf & Resort LLC <sup>1</sup>	1,227	635	839	768
Merlin Properties	6	6	6	6
Oak Valley Partners, LP	503	400	476	434
Plantation on the Lake	321	313	327	372
Rancho Calimesa MHP	59	59	59	59
Roman Catholic Bishop	78	72	72	72
Sharondale Mesa Owners Association	169	163	186	195
So. Calif. Prof. Golfer's Assoc.	1,401	1,369	1,385	1,764
Sterns, Leonard M. and Dorthy D.	1	1	1	1
Sunny-Cal Egg and Poultry Co.	452	452	0	0
Nikodinov, Nick			0	0
McAmis, Ronald L.			0	0
Aldama, Nicolas and Amalia			0	0
Gutierrez, Hector, Luis Gutierrez and Sebastian Monroy			0	0
Darmont, Boris and Miriam			0	0
<b>Subtotal</b>	<b>4,244</b>	<b>3,497</b>	<b>3,432</b>	<b>3,763</b>
<b>Total</b>	<b>16,824</b>	<b>14,146</b>	<b>14,987</b>	<b>19,264</b>

1 -- 2004/05 and 2005/06 values corrected and 2003/04 value is being reviewed



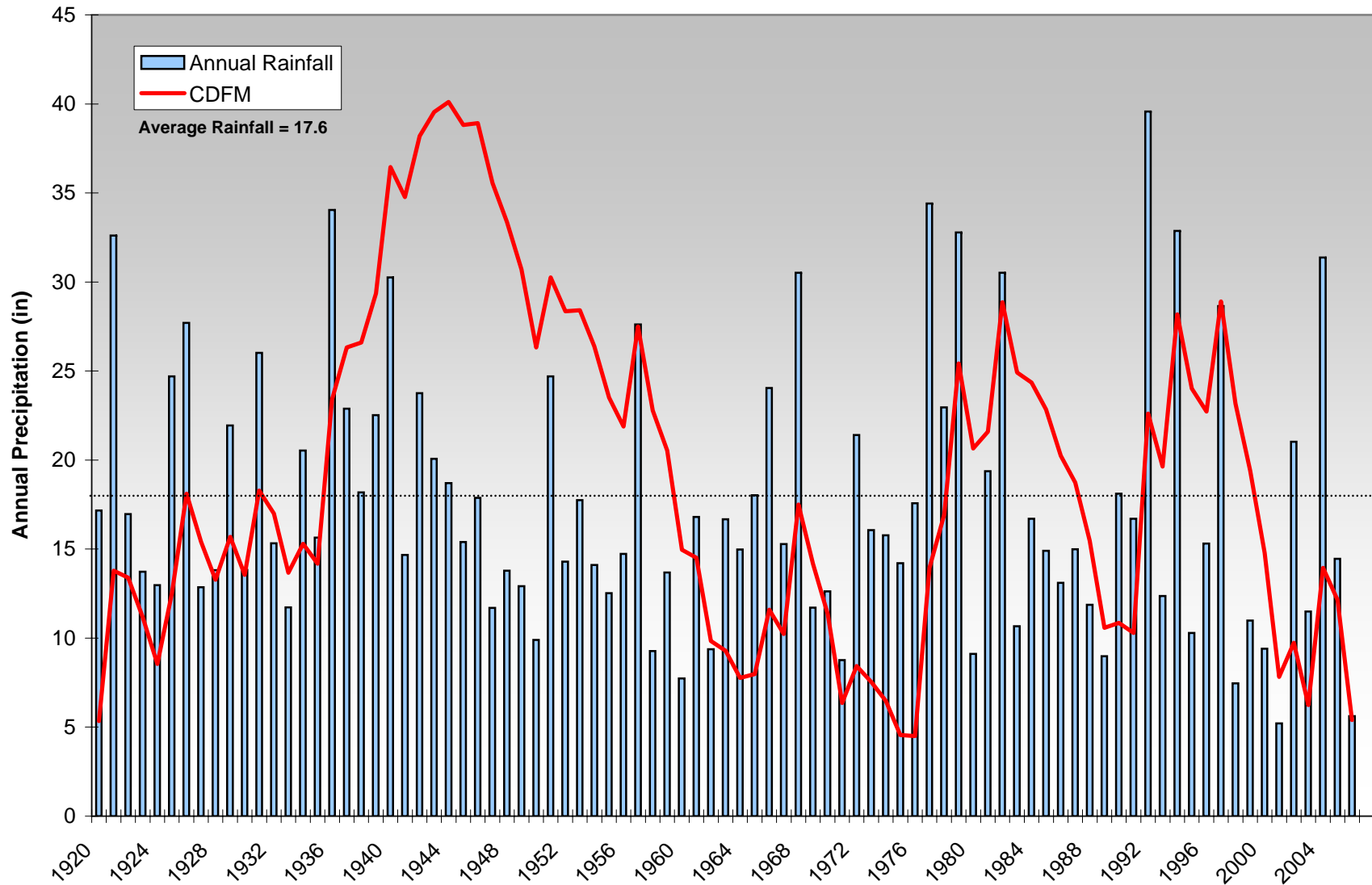
**Table 2**  
**Summary of Appropriator Storage Account Balances as of July 1, 2007**

Appropriator	Storage Account Balance as of July 1, 2006	Ending Account Balance as of July 1, 2007	Authorized Storage Account as of July 1, 2007
Banning	6,948	11,431	40,000
Beaumont	0	0	0
Beaumont-Cherry Valley WD	191	4,499	70,000
South Mesa Water Co.	4,378	2,682	20,000
Yucaipa Valley Water District	1,700	1,564	5,000
Totals	13,216	20,176	135,000

1 -- negative values of under production mean that the appropriator pumped more than its share of the operating yield.

2 -- SMWC sold 1,500 acre-ft each to the City of Banning and BCVWD thereby increasing their storage accounts by 1,500 acre-ft each and decreasing SMWC's storage account by 3,000 acre-ft.




**Figure 1. Annual Precipitation with Cumulative Departure From Mean  
(Beaumont Station 013: 1920-2007)**





Fourth Annual Report of the  
Beaumont Basin Watermaster

Main Features

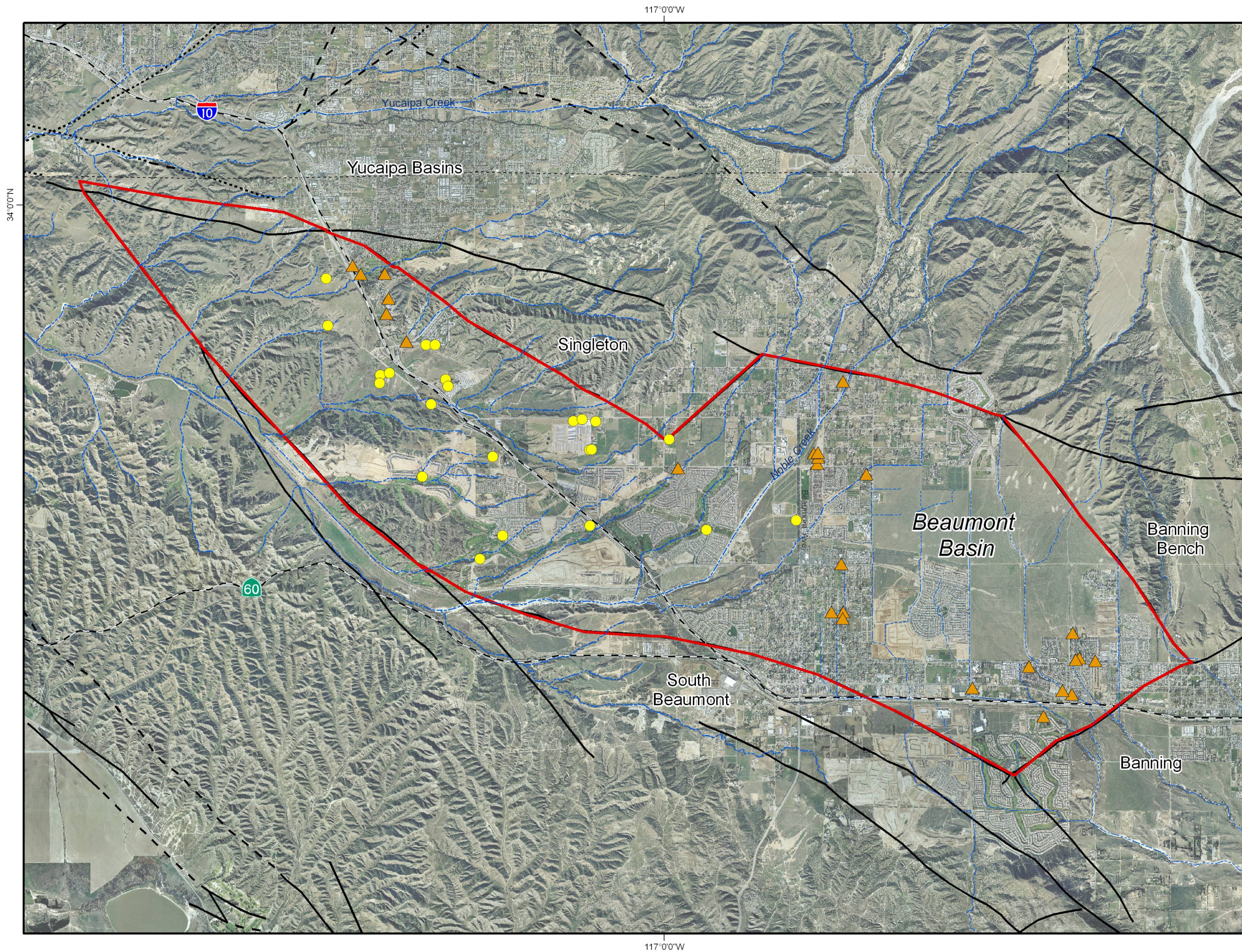
-  Appropriators
-  Overlying Producers
-  Beaumont Basin Boundary

Other Features

-  Streams

Faults & Groundwater Divides

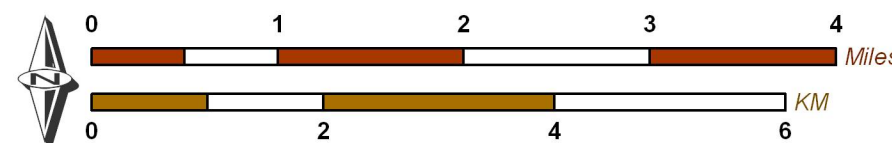
-  Location Certain
-  Location Approximate
-  Location Concealed



Produced by:

**WILDERMUTH**  
ENVIRONMENTAL INC.  
23692 Birtcher Drive  
Lake Forest, California 92630  
949.420.3030  
www.wildermuthenvironmental.com

Author: SSS  
Date: 20070907  
File: Figure 2.mxd



Location Map of Wells  
in the Beaumont Basin

Figure 2



**APPENDIX A**  
**SUMMARY OF PRODUCTION, RECHARGE, TRANSFERS,**  
**AND STORAGE IN THE BEAUMONT BASIN**

**Appendix A-1**  
**Appropriator Producer Summary of Production for Fiscal Year 2006/07**

Well Name	Station ID	Water Production by Appropriator (acre-ft) <sup>1</sup>												Total Production	Op Safe Yield	Eligible for Storage
		Jul 2006	Aug 2006	Sep 2006	Oct 2006	Nov 2006	Dec 2006	Jan 2007	Feb 2007	Mar 2007	Apr 2007	May 2007	Jun 2007			
Banning, City of																
Well C2-A	1007031	0	0	5	0	0	2	1	0	1	1	0	30	39	5,029	2,983
Well C3	1004377	36	45	61	27	6	10	4	0	9	18	48	59	323		
Well C4	1206706	61	32	50	11	20	10	13	5	2	11	61	156	434		
Well M3	1206700	85	82	88	75	70	33	40	13	24	24	24	43	600		
Well M9	1206834	0	0	0	0	0	0	0	0	0	0	0	0	0		
Production from BCVWD <sup>2</sup>		104	105	106	62	45	0	0	0	43	55	71	59	651		
<b>Subtotal</b>		287	264	310	174	140	55	58	18	79	108	204	348	2,046		
Beaumont-Cherry Valley Water District																
Well 1	1004351	186	170	141	93	138	47	75	54	116	13	83	131	1,245	6,802	0
Well 2	1004349	0	0	0	0	0	0	0	0	0	0	0	0	0		
Well 3	1004350	191	51	6	5	163	56	81	55	43	82	86	148	968		
Well 16	1002938	120	114	101	12	0	0	0	0	17	0	0	12	376		
Well 21	1201487	320	306	263	120	196	82	190	99	92	115	184	215	2,183		
Well 22	1002966	176	160	140	77	101	61	43	21	60	47	97	128	1,111		
Well 23	1207328	699	0	304	191	295	110	187	54	168	190	274	273	2,747		
Well 24	1208224	277	248	299	173	211	106	79	280	186	173	209	237	2,477		
Production for Banning <sup>2</sup>		-104	-105	-106	-62	-45	0	0	0	-43	-55	-71	-59	-651		
<b>Subtotal</b>		1,865	943	1,149	609	1,060	462	655	563	639	566	861	1,084	10,455		
South Mesa Water Company																
3rd No. 4 Well	1003035	81	77	65	56	54	42	43	33	49	53	69	71	691	1,996	1,305
<b>Subtotal</b>		81	77	65	56	54	42	43	33	49	53	69	71	691		
Yucaipa Valley Water District																
Well 35	1003058	47	40	34	20	15	2	1	0	4	1	28	47	241	2,173	0
Well 48	1003063	244	240	228	229	228	121	53	18	131	122	222	231	2,068		
<b>Subtotal</b>		292	280	262	249	243	124	55	18	135	124	250	278	2,309		
<b>Total</b>		2,525	1,564	1,786	1,089	1,496	682	809	632	902	851	1,385	1,780	15,502	16,000	4,287

1 -- All values rounded and subject to revision based on receipt of more accurate information  
2 -- Pursuant to Part I, Paragraph 3 B of the Judgment, and a separate Agreement (a copy of which is on file with the Watermaster).

Appendix A-2  
Overlying Producer Summary of Production for Fiscal Year 2006/07

Well Name	Station ID	Metered	Water Production Reported by Overlying Party (acre-ft) <sup>1</sup>												Total <sup>2</sup> Reported Production	Estimated Production FY 2006-07	Overlying Water Right	Five-Year Production Right	Total Production To Date
			Jul 2006	Aug 2006	Sep 2006	Oct 2006	Nov 2006	Dec 2006	Jan 2007	Feb 2007	Mar 2007	Apr 2007	May 2007	Jun 2007					
Beckman, Walter M.	1206852	Yes	19	20	15	7	11	2	3	2	2	3	4	5	93	93	75	375	230
<b>California Oak Valley Golf and Resort LLC</b>																			
Oak Valley #1	1007025	Yes	33	54	16	0	1	0	0	0	0	20	17	0	140				
OVGC Comfort Stn	1206848	Yes	91	47	84	43	67	28	36	21	47	22	57	86	628				
<b>Subtotal</b>			124	101	100	43	67	28	36	21	47	42	73	86	768	768	950	4,750	3,469
<b>Merlin Properties</b>		No														6	550	2,750	24
<b>Oak Valley Partners, LP</b>																			
Singleton Ranch #5	1003075	No													300				
Singleton Ranch #7	1003072	Yes	10	12	20	15	7	7	16	10	10	12	3	0	124				
Irrigation Stokes	1201567	No													10				
<b>Subtotal</b>															434	434	1,806	9,030	1,813
Plantation on the Lake LLC	1206846	Yes	40	42	41	35	32	30	22	21	17	32	24	38	372	372	581	2,905	1,333
<b>Rancho Calimesa Mobile Home Park</b>		No														59	150	750	236
<b>Roman Catholic Bishop of San Bernardino</b>																			
Irr-Gas	1201556	No																	
Pressure	1201557	No																	
<b>Subtotal</b>																72	154	770	294
<b>Sharondale Mesa Owners Association</b>																			
Well No.1	1206844	Yes	6	12	13	10	9	7	5	7	12	14	3	14	111				
Well No.2	1206845	Yes	22	13	11	7	3	1	2	0	0	0	18	6	83				
<b>Subtotal</b>			28	25	23	17	13	8	7	7	12	14	21	20	195	195	200	1,000	713
<b>So Calif Section of the Professional Golfer's Association of America</b>																			
Well A	1206995	Yes	3	3	7	7	20	92	17	80	60	75	53	51	467				
Well C	1206997	Yes	0	0	0	0	0	0	0	0	0	0	0	0	0				
Well D	1206996	Yes	196	165	213	92	29	82	80	37	96	107	112	90	1297				
<b>Subtotal</b>			199	168	220	99	49	174	97	117	156	182	165	141	1764	1764	2,200	11,000	5,919
<b>Stearns, Leonard M. and Dorothy D.</b>																1	200	1,000	4
<b>Sunny-Cal Egg and Poultry Company</b>																0	1,439.5	7,197.5	909
<b>Sunny-Cal North - Manheim, Manheim &amp; Berman</b>																0	300	1,500	0
<b>Nikodinov, Nick</b>																0	20	100	0
<b>McAmis, Ronald L.</b>																0	5	25	0
<b>Aldama, Nicolas and Amalia</b>																0	7	35	0
<b>Gutierrez, Hector, Luis Gutierrez and Sebastian Monroy</b>																0	10	50	0
<b>Darmont, Boris and Miriam</b>																0	2.5	12.5	0
<b>Total</b>																3,763	8,650	43,250	14,944

1 -- All values rounded and subject to revision based on receipt of more accurate information  
2 -- Blank indicates no information was reported and production was estimated

**Appendix A-3**  
**Reconciliation of Appropriator Production and Storage Accounts**

Fiscal Year	Storage Account Balance at Beginning of Fiscal Year	Operating Yield	Groundwater Production for Fiscal Year	Additions to Storage Account						Ending Account Balance	Authorized Storage Account as of June 30, 2007
				Under Production <sup>1</sup>	Transfers Among Appropriators	Supplemental Water		Local Recharge	Total Additions to Storage Account		
						SWP Water Recharge	Recycled Water Recharge				
Beaumont Cherry Valley Water District											
2003/04	0	6,802	6,204	598	0	0	0	0	598	598	
2004/05	598	6,802	6,386	416	0	0	0	0	416	1,014	
2005/06	1,014	6,802	7,625	-823	0	0	0	0	-823	191	
2006/07 <sup>2</sup>	191	6,802	10,455	-3,653	1,500	6,462	0	0	4,309	4,499	70,000
City of Banning											
2003/04	0	5,029	3,951	1,078	0	0	0	0	1,078	1,078	
2004/05	1,078	5,029	2,420	2,609	0	0	0	0	2,609	3,686	
2004/06	3,686	5,029	1,768	3,261	0	0	0	0	3,261	6,948	
2006/07 <sup>2</sup>	6,948	5,029	2,046	2,983	1,500	0	0	0	4,483	11,431	40,000
City of Beaumont											
2003/04	0	0	0	0	0	0	0	0	0	0	
2004/05	0	0	0	0	0	0	0	0	0	0	
2004/06	0	0	0	0	0	0	0	0	0	0	
2006/07	0	0	0	0	0	0	0	0	0	0	0
South Mesa Water Company											
2003/04	0	1,996	420	1,576	0	0	0	0	1,576	1,576	
2004/05	1,576	1,996	558	1,438	0	0	0	0	1,438	3,014	
2004/06	3,014	1,996	632	1,364	0	0	0	0	1,364	4,378	
2006/07 <sup>2</sup>	4,378	1,996	691	1,305	-3,000	0	0	0	-1,695	2,682	20,000
Yucaipa Valley Water District											
2003/04	0	2,173	2,005	168	0	0	0	0	168	168	
2004/05	168	2,173	1,284	889	0	0	0	0	889	1,056	
2004/06	1,056	2,173	1,530	643	0	0	0	0	643	1,700	
2006/07	1,700	2,173	2,309	-136	0	0	0	0	-136	1,564	5,000
Totals											
2003/04	0	16,000	12,580	3,420	0	0	0	0	3,420	3,420	
2004/05	3,420	16,000	10,649	5,351	0	0	0	0	5,351	8,771	
2004/06	8,771	16,000	11,555	4,445	0	0	0	0	4,445	13,216	
2006/07	13,216	16,000	15,502	498	0	6,462	0	0	6,960	20,176	135,000
Cumulative Totals	13,216	64,000	50,286	13,714	0	6,462	0	0	20,176	20,176	

1 -- negative values of under production mean that the appropriator pumped more than its share of the operating yield.

2 -- SMWC sold 1,500 acre-ft each to the City of Banning and BCVWD thereby increasing their storage accounts by 1,500 acre-ft each and decreasing SMWC's storage account by 3,000 acre-ft.



**Appendix A-4**  
**Appropriator Producer Summary of Production for Fiscal Year 2003/04 (Amended)**

Well Name	Station ID	Water Production by Appropriator (acre-ft) <sup>1</sup>												Total Production	Op Safe Yield	Eligible for Storage	
		Jul 2003	Aug 2003	Sept 2003	Oct 2003	Nov 2003	Dec 2003	Jan 2004	Feb 2004	Mar 2004	Apr 2004	May 2004	Jun 2004				
Banning, City of																	
Well C2-A	1007031	107.5	99.1	118.7	108.5	82.9	102.5	95.4	88.6	51.3	72.8	40.6	50.3	1018			
Well C3	1004377	112.9	100.9	103.1	88.1	36.6	76.1	101.0	88.5	101.4	48.7	67.8	75.2	1000			
Well C4	1206706	102.1	111.0	74.0	77.6	64.9	18.7	38.5	19.5	85.8	74.4	91.2	69.4	827			
Well M3	1206700	76.4	162.1	129.8	146.7	10.7	0.0	0.0	0.0	0.0	0.0	50.9	118.9	696			
Well M9	1206834	62.2	1.1	0.0	0.0	0.0	0.0	0.0	0.0	0.0	0.0	0.0	0.0	63			
Production from BCVWD <sup>2</sup>										67.7	102.6	127.4	49.0	347			
Subtotal		461.2	474.2	425.6	420.9	195.1	197.3	234.9	196.6	306.3	298.5	377.9	362.8	3951	5029	1078	
Beaumont-Cherry Valley Water District																	
Well 1	1004351	0.0	0.0	0.0	0.0	0.6	5.3	0.0	0.0	33.5	118.1	180.0	175.7	513			
Well 2	1004349	167.9	181.2	193.8	151.1	115.0	151.2	143.0	135.1	203.1	192.1	183.4	124.5	1941			
Well 3	1004350	152.7	163.6	173.0	118.0	43.6	24.2	0.0	0.0	0.0	0.0	153.6	189.4	1018			
Well 16	1002938	108.3	110.9	114.5	94.0	59.0	67.9	64.2	49.7	88.2	112.3	137.0	132.9	1139			
Well 21	1201487	201.0	209.3	218.0	172.6	31.9	0.0	0.0	0.0	0.1	0.0	0.4	2.9	836			
Well 22	1002966	152.7	110.9	50.3	135.9	33.5	0.0	64.3	54.0	101.9	111.5	140.8	147.4	1103			
Production for Banning <sup>2</sup>										-67.7	-102.6	-127.4	-49.0	-347			
Subtotal		782.6	776.0	749.6	671.6	283.4	248.6	271.5	238.9	359.2	431.4	667.8	723.8	6204	6802	598	
South Mesa Water Company																	
3rd No. 4 Well	1003035	65.2	47.0	51.3	25.5	18.0	16.2	15.7	13.1	30.5	45.3	53.1	39.0	420			
Subtotal		65.2	47.0	51.3	25.5	18.0	16.2	15.7	13.1	30.5	45.3	53.1	39.0	420	1996	1576	
Yucaipa Valley Water District																	
Well 35	1003058	25.3	18.8	10.4	1.9	0.7	1.8	1.1	0.8	4.4	0.6	0.8	3.4	70			
Well 48	1003063	234.5	239.1	220.9	164.3	123.8	120.9	121.4	107.2	133.3	136.4	170.9	162.3	1935			
Subtotal		259.7	257.9	231.4	166.2	124.5	122.7	122.5	108.0	137.7	137.1	171.7	165.7	2005	2173	168	
Total		1568.7	1555.0	1457.8	1284.3	620.9	584.8	644.5	556.6	833.7	912.2	1270.5	1291.3	12580	16000	3420	

1 -- All values rounded and subject to revision based on receipt of more accurate information

2 -- Pursuant to Part I, Paragraph 3 B of the Judgment, and a separate Agreement (a copy of which is on file with the Watermaster).

Appendix A-5  
Overlying Producer Summary of Production for Fiscal Year 2003/04 (Amended)

Well Name	Station ID	Metered	Water Production Reported by Overlying Party (acre-ft) <sup>1</sup>												Total <sup>2</sup> Reported Production	Estimated <sup>3</sup> Production FY 2003-04	Overlying Water Right	Five-Year Production Right
			Jul 2003	Aug 2003	Sep 2003	Oct 2003	Nov 2003	Dec 2003	Jan 2004	Feb 2004	Mar 2004	Apr 2004	May 2004	Jun 2004				
Beckman, Walter M. <sup>4</sup>	1206852	No													NR	27	75	375
California Oak Valley Golf and Resort LLC <sup>5</sup>																		
Oak Valley #1	1007025	No																
OVGC Comfort Stn	1206848	No																
Subtotal															NR	1,227	950	4,750
Merlin Properties <sup>6</sup>		No													NR	6	550	2,750
Oak Valley Partners, LP																		
Haskell Ranch-Main	1003078	N/A														49		
Singleton Ranch #5	1003075	No														300		
Singleton Ranch #7	1003072	Yes														143		
Irrigation Stokes	1201567	No														10		
Subtotal																503	1,806	9,030
Plantation on the Lake LLC		Yes	26.8	38.0	38.1	31.6	25.5	18.7	18.3	21.7	13.2	24.1	30.3	35.1	321	321	581	2,905
Rancho Calimesa Mobile Home Park <sup>7</sup>		No													NR	59	150	750
Roman Catholic Bishop of San Bernardino <sup>8</sup>																		
Irr-Gas	1201556	No														56		
Pressure	1201557	No														22		
Subtotal															NR	78	154	770
Sharondale Mesa Owners Association																		
Well No.1	1206844	Yes	24.2	20.9	27.3	15.6	5.1	5.5	5.0	3.4	5.9	7.4	10.0	14.4	144			
Well No.2	1206845	Yes	0.0		0.0			5.7				1.7	12.0	5.2	25			
Subtotal			24.2	20.9	27.3	15.6	5.1	11.2	5.0	3.4	5.9	9.1	22.0	19.6	169	167	200	1,000
So Calif Section of the Professional Golfer's Association of America <sup>9</sup>																		
Well A	1206995	Yes	35.8	38.6	25.8	6.0	7.7	4.6	6.4	0.7	35.9	25.6	43.1	45.3	275			
Well B	1206998	No																
Well C	1206997	Yes														32		
Well D	1206996	Yes	174.7	158.8	133.7	115.3	43.8	34.3	36.5	14.1	56.4	64.9	113.7	148.0	1,094			
Subtotal			210.5	197.4	159.5	121.3	51.4	38.9	42.9	14.8	92.3	90.5	156.8	193.3	1,401	1,413	2,200	11,000
Stearns, Leonard M. and Dorothy D.		No													NR	1	200	1,000
Sunny-Cal Egg and Poultry Company <sup>10</sup>																		
Well No. 1	1206854	N/A																
Well No. 2	1002950	N/A																
Well No. 3		N/A																
Well No. 4	1201480	N/A																
Well No. 5		N/A																
Well No. 6		N/A																
Subtotal															NR	452	1,784	8,920
Total																4,254	6,866	34,330

<sup>1</sup> All values rounded & subject to revision based on receipt of more accurate information  
<sup>2</sup> Blank or NR, no information reported or production estimated  
<sup>3</sup> All production estimates where irrigation occurs use 70% irrigation efficiency for sprinkler irrigation  
<sup>4</sup> Production estimated: well has no meter, but supplies water for 2 residences & sprinkler irrigates approximately 4.5 acres of land  
<sup>5</sup> Production estimated: approximately 208.7 acres golf course  
<sup>6</sup> Production estimated: well supplies 3 residences with approximately 0.8 acres of landscape irrigation  
<sup>7</sup> Production estimated: Rancho Calimesa has approximately 195 mobile homes from aerial photo - 0.3 af/yr per dwelling unit indoor use estimated. Three other residences on other parcels - all owned by Stearns.  
<sup>8</sup> Production estimated: Wells have no meters, but supply water for 2 residences & sprinkler irrigates approximately 12 acres of land  
<sup>9</sup> Provided copies of state filing with annual calendar year estimates only - SCPGA Well B (1206998 destroyed and capped).  
<sup>10</sup> Well Nos. 5 & 6 are production for Manheim, Manheim & Berman who share in aggregate right with Sunny-Cal

**Appendix A-6**  
**Appropriator Producer Summary of Production for Fiscal Year 2004/05 (Amended)**

Well Name	Station ID	Water Production by Appropriator (acre-ft) <sup>1</sup>												Total Production	Op Safe Yield	Eligible for Storage
		Jul 2004	Aug 2004	Sep 2004	Oct 2004	Nov 2004	Dec 2004	Jan 2005	Feb 2005	Mar 2005	Apr 2005	May 2005	Jun 2005			
Banning, City of																
Well C2-A	1007031	86.2	69.6	73.1	36.3	22.6	23.9	0.4	0.0	0.0	0.0	0.0	0.0	312	5029	2609
Well C3	1004377	120.4	117.4	106.0	89.3	53.0	57.9	45.0	57.1	10.3	48.2	46.7	40.0	791		
Well C4	1206706	136.8	157.7	154.8	135.2	91.2	81.2	89.6	7.5	6.1	28.8	8.5	20.9	918		
Well M3	1206700	0.0	0.0	0.0	0.0	0.0	0.0	0.0	0.0	0.0	0.0	34.8	39.8	75		
Well M9	1206834	0.0	0.0	0.0	0.0	0.0	0.0	0.0	0.0	0.0	0.0	0.0	0.0	0		
Production from BCVWD <sup>2</sup>														324		
Subtotal		343.4	344.6	334.0	260.7	166.7	163.1	135.0	64.6	16.4	76.9	90.0	100.7	2420		
Beaumont-Cherry Valley Water District																
Well 1	1004351	156.6	134.4	130.7	9.3	0.0	40.0	15.2	10.1	19.3	67.9	122.2	164.2	870	6802	416
Well 2	1004349	144.6	138.1	141.8	101.1	57.4	64.1	44.6	36.1	36.9	0.0	0.0	0.0	765		
Well 3	1004350	145.8	164.1	117.0	84.1	47.6	34.4	37.3	30.7	40.7	79.7	30.7	135.0	947		
Well 16	1002938	133.8	113.5	86.2	54.3	54.5	77.0	9.9	0.0	0.0	40.2	60.2	110.8	740		
Well 21	1201487	211.7	259.9	268.0	195.6	163.8	150.0	78.0	104.1	106.8	181.5	154.7	224.7	2099		
Well 22	1002966	151.3	151.1	126.9	69.0	4.2	2.8	0.0	5.8	13.7	57.9	73.0	69.0	725		
Well 23	1207328	0.0	41.9	85.1	55.7	17.9	3.7	56.5	25.0	29.5	63.9	58.5	126.6	564		
Production for Banning <sup>2</sup>														-324		
Subtotal		943.9	1003.0	955.7	569.1	345.4	372.0	241.5	211.8	247.0	491.2	499.2	830.4	6386		
South Mesa Water Company																
3rd No. 4 Well	1003035	51.6	82.4	74.2	54.7	12.1	10.9	29.7	16.7	39.2	51.3	65.4	70.0	558	1996	1438
Subtotal		51.6	82.4	74.2	54.7	12.1	10.9	29.7	16.7	39.2	51.3	65.4	70.0	558		
Yucaipa Valley Water District																
Well 35	1003058	63.9	76.8	70.9	1.4	1.4	0.8	0.2	0.7	0.7	24.7	30.1	0.6	272	2173	889
Well 48	1003063	177.9	218.9	186.5	123.8	18.9	20.6	13.6	11.4	21.2	14.8	51.9	152.6	1012		
Subtotal		241.9	295.6	257.5	125.2	20.3	21.4	13.8	12.1	21.9	39.5	82.0	153.1	1284		
Total		1580.7	1725.7	1621.4	1009.8	544.5	567.4	420.0	305.1	324.5	659.0	736.6	1154.2	10649	16000	5351

1 -- All values rounded and subject to revision based on receipt of more accurate information

2 -- Pursuant to Part I, Paragraph 3 B of the Judgment, and a separate Agreement (a copy of which is on file with the Watermaster).

Appendix A-7  
Overlying Producer Summary of Production for Fiscal Year 2004/05 (Amended)

Well Name	Station ID	Metered	Water Production Reported by Overlying Party (acre-ft) <sup>1</sup>												Total <sup>2</sup> Reported Production	Estimated <sup>3</sup> Production FY 2004-05	Overlying Water Right	Five-Year Production Right
			Jul 2004	Aug 2004	Sep 2004	Oct 2004	Nov 2004	Dec 2004	Jan 2005	Feb 2005	Mar 2005	Apr 2005	May 2005	Jun 2005				
Beckman, Walter M. <sup>4</sup>	1206852	No													NR	27.1	75	375
California Oak Valley Golf and Resort LLC <sup>5</sup>																		
Oak Valley #1	1007025	No							164.6		6.1			150.2	321			
OVGC Comfort Stn	1206848	No								18.7				82.2	101			
Subtotal															422	635.0	950	4,750
Merlin Properties <sup>6</sup>		No													NR	5.6	550	2,750
Oak Valley Partners, LP <sup>7</sup>																		
Singleton Ranch #5	1003075	No													300			
Singleton Ranch #7	1003072	Yes													90			
Irrigation Stokes	1201567	No													10			
Subtotal															400	400.0	1,806	9,030
Plantation on the Lake LLC		Yes	35.9	41.4	40.7	37.8	21.8	20.5	23.0	11.9	8.3	16.8	20.2	34.3	313	313.0	581	2,905
Rancho Calimesa Mobile Home Park <sup>8</sup>		No													NR	58.5	150	750
Roman Catholic Bishop of San Bernardino <sup>9</sup>																		
Irr-Gas	1201556	No																
Pressure	1201557	No																
Subtotal															NR	71.8	154	770
Sharondale Mesa Owners Association																		
Well No.1	1206844	Yes	19.4	12.0	9.2	8.0	8.5	7.9	5.2	5.9	2.5	8.8	9.2	13.3	110			
Well No.2	1206845	Yes	7.7	9.6	6.5	4.2	0.0	0.0	0.0	0.0	4.3	5.2	7.2	8.1	53			
Subtotal			27.1	21.6	15.8	12.3	8.5	7.9	5.2	5.9	6.8	13.9	16.4	21.4	163	163.0	200	1,000
So Calif Section of the Professional Golfer's Association of America <sup>10</sup>																		
Well A	1206995	Yes													196			
Well B	1206998	No																
Well C	1206997	Yes													62			
Well D	1206996	Yes													1,110			
Subtotal															1,369	1,369.0	2,200	11,000
Stearns, Leonard M. and Dorothy D.		No													NR	0.9	200	1,000
Sunny-Cal Egg and Poultry Company <sup>11</sup>																		
Well No. 1	1206854	N/A																
Well No. 2	1002950	N/A																
Well No. 3		N/A																
Well No. 4	1201480	N/A																
Well No. 5		N/A																
Well No. 6		N/A																
Subtotal															NR	451.7	1,784	8,920
Total																3,496	6,866	34,330

<sup>1</sup> All values rounded & subject to revision based on receipt of more accurate information  
<sup>2</sup> Blank or NR, no information reported or production estimated  
<sup>3</sup> All production estimates where irrigation occurs use 70% irrigation efficiency for sprinkler irrigation  
<sup>4</sup> Production estimated: well has no meter, but supplies water for 2 residences & sprinkler irrigates approximately 4.5 acres of land  
<sup>5</sup> Production estimated from partially reported values  
<sup>6</sup> Production estimated: well supplies 3 residences with approximately 0.8 acres of landscape irrigation  
<sup>7</sup> Oak Valley # 1: 164.6 af for Sep 2004 - Jan 2005; 6.1 af for Feb & Mar 2005; 150.2 af for Apr - Jun 2005; OVGC Comfort Station: reported 14.0 af for Feb & Mar 2005; 61.5 af for Apr - Jun 2005  
<sup>8</sup> Production estimated: Rancho Calimesa has approximately 195 mobile homes from aerial photo - 0.3 af/yr per dwelling unit indoor use estimated. Three other residences on other parcels - all owned by Stearns.  
<sup>9</sup> Production estimated: Wells have no meters, but supply water for 2 residences & sprinkler irrigates approximately 12 acres of land  
<sup>10</sup> Provided copies of state filing with annual calendar year estimates only - SCPGA Well B (1206998 destroyed and capped).  
<sup>11</sup> Well Nos. 5 & 6 are production for Manheim, Manheim & Berman who share in aggregate right with Sunny-Cal

Appendix A-8  
Overlying Producer Summary of Production for Fiscal Year 2005/06 (Amended)

Well Name	Station ID	Metered	Water Production Reported by Overlying Party (acre-ft) <sup>1</sup>												Total <sup>2</sup> Reported Production	Estimated Production FY 2006-07	Overlying Water Right	Five-Year Production Right
			Jul 2005	Aug 2005	Sep 2005	Oct 2005	Nov 2005	Dec 2005	Jan 2006	Feb 2006	Mar 2006	Apr 2006	May 2006	Jun 2006				
Beckman, Walter M.	1206852	Yes							7.3	3.3	6.2	0.6	4.1	20.1	41.6	83	75	375
<b>California Oak Valley Golf and Resort LLC</b>																		
Oak Valley #1	1007025	Yes	92.9		29.1	122.6	81.1		73.3	32.0	34.0	0.0	44.6	166.1	741.6			
OVGC Comfort Stn	1206848	Yes	39.3		13.1	27.4	0.0	0.0	0.0	0.0	0.1	0.0	6.1	11.4	97.4			
<b>Subtotal</b>			132.2	0.0	42.2	150.0	81.1	0.0	73.3	32.0	34.1	0.0	50.7	177.5	839.0	839	950	4,750
<b>Merlin Properties</b>																		
		No														5.6	550	2,750
<b>Oak Valley Partners, LP</b>																		
Singleton Ranch #5	1003075	No													300.0			
Singleton Ranch #7	1003072	Yes	0.0	0.0	0.5	7.3	13.1	11.5	7.6	9.7	14.0	24.4	28.0	49.6	165.7			
Irrigation Stokes	1201567	No													10.0			
<b>Subtotal</b>															475.7	475.7	1,806	9,030
Plantation on the Lake LLC	1206846	Yes	35.3	35.9	42.9	32.6	25.4	23.7	27.6	21.6	20.7	12.0	20.4	28.8	326.8	326.8	581	2,905
<b>Rancho Calimesa Mobile Home Park</b>																		
		No														58.5	150	750
<b>Roman Catholic Bishop of San Bernardino</b>																		
Irr-Gas	1201556	No																
Pressure	1201557	No																
<b>Subtotal</b>																71.8	154	770
<b>Sharondale Mesa Owners Association</b>																		
Well No.1	1206844	Yes	7.0	12.8	13.9	9.6	4.4	5.8	5.1	6.6	2.1	4.3	8.7	14.2	94.5			
Well No.2	1206845	Yes	16.0	12.6	7.2	6.8	9.6	5.7	4.8	3.4	4.0	4.7	7.7	9.0	91.3			
<b>Subtotal</b>			23.0	25.5	21.1	16.3	14.0	11.5	9.9	10.1	6.1	9.0	16.3	23.2	185.8	185.8	200	1,000
<b>So Calif Section of the Professional Golfer's Association of America</b>																		
Well A	1206995	Yes	29.9	31.9	34.3	12.6	8.2	8.1	8.4	5.7	3.1	14.3	0.6	2.9	160.0			
Well C	1206997	Yes	0.0	0.0	0.0	0.0	0.0	0.0	0.0	0.0	0.0	0.0	0.0	0.0	0.0			
Well D	1206996	Yes	124.1	127.7	114.5	67.9	79.4	75.7	75.6	15.0	10.0	147.1	169.9	218.2	1225.0			
<b>Subtotal</b>			154.1	159.6	148.7	80.4	87.5	83.8	83.9	20.7	13.1	161.5	170.5	221.1	1385.0	1385.0	2,200	11,000
<b>Stearns, Leonard M. and Dorothy D.</b>																		
																0.9	200	1,000
<b>Sunny-Cal Egg and Poultry Company</b>																		
																0	1,439.5	7,197.5
<b>Sunny-Cal North - Manheim, Manheim &amp; Berman</b>																		
																0	300	1,500
<b>Nikodinov, Nick</b>																		
																0	20	100
<b>McAmis, Ronald L.</b>																		
																0	5	25
<b>Aldama, Nicolas and Amalia</b>																		
																0	7	35
<b>Gutierrez, Hector, Luis Gutierrez and Sebastian Monroy</b>																		
																0	10	50
<b>Darmont, Boris and Miriam</b>																		
																0	2.5	12.5
<b>Total</b>																3432	8,650	

1 -- All values rounded and subject to revision based on receipt of more accurate information  
2 -- Blank indicates no information was reported and production was estimated

**APPENDIX B**  
**ACTIVE PARTY LIST**

## Active & Interested Party List

Mr. Paul Toor  
Public Works Director/Assistant City Manager  
City of Banning  
Post Office Box 998  
Banning, CA 92220

Mr. Chuck Butcher  
General Manager  
Beaumont Cherry Valley Water District  
560 Magnolia Avenue  
Beaumont, CA 92223

Mr. Joe Zoba  
General Manager  
Yucaipa Valley Water District  
Post Office Box 730  
Yucaipa, CA 92399

Mr. George Jorritsma,  
General Manager  
South Mesa Mutual Water Company  
Post Office Box 458  
Calimesa, CA 92320

Mr. J. Andrew Schlange  
General Manager  
San Timoteo Watershed Management Authority  
4 Crown Court  
Rancho Mirage, CA 92270

Mr. Dave Dillon  
Mr. Dee Moorjani  
Urban Logic Consultants  
43517 Ridge Park Drive, Suite 200  
Temecula, CA 92590

Mr. Gerry Shoaf, Esq.  
Redwine and Sherrill  
1950 Market Street  
Riverside, Ca 9250

Mr. James Krueger  
Plantation on the Lake  
PO Box 1960,  
Newport Beach, CA 92658-8932  
jimk@mrc1.com



Mr. Robert Hawkins, Esq.  
110 Newport Center Dr., Ste. 200  
Newport Beach, CA 92660

Sharondale Mesa Owners Association  
9525 Sharon Way  
Calimesa, CA 92320

Mr. Ron Sullivan  
California Oak Valley Golf & Resort LLC  
27710 Jefferson Ave #301  
Temecula, CA 92590

Mark Knorrington  
Oak Valley Partners LP  
Post Office Box 645  
Calimesa, CA 92320

Mr. Paul Singarella, Esq.  
Latham & Watkins, LLP  
650 Town Center Drive, 20th Floor  
Costa Mesa, CA 92626-1925

Mr. Roger Billings  
So Cal Professional Golfers Association of America  
36211 Champions Drive  
Calimesa, CA 92320

Mr. Greg Wilkinson, Esq.  
Best, Best & Krieger  
3750 University Avenue, Suite 400  
Riverside, CA 92501

Mr. Steve Anderson, Esq.  
Manheim, Manheim & Berman and Sunny Cal Egg and Poultry Company  
Best, Best & Krieger  
3750 University Avenue, Suite 400  
Riverside, CA 92501

Mr. Walter M. Beckman  
38201 Cherry Valley Boulevard  
Cherry Valley, CA 92223

Mr. Fred Reidman and Mr. Richard Reidman  
Merlin Properties, LLC  
6475 East Pacific Coast Highway, No. 399  
Long Beach, CA 90803  
riedman@gte.net

Mr. Leonard Stearns  
Post Office Box 141  
Calimesa, CA 92320

Mr. Randy Van Gelder  
San Bernardino Valley Municipal Water District  
1350 South "E" Street  
San Bernardino, CA 92412-5906

Mr. Robert Reiter  
San Bernardino Valley Municipal Water District  
1350 South E Street  
San Bernardino, CA 92412-5906

Mr. Jeff Davis  
General Manager  
San Gorgonio Pass Water Agency  
1210 Beaumont, Avenue  
Beaumont, CA 92223

Mr. Mark J. Wildermuth  
President/CEO  
Wildermuth Environmental, Inc.  
23692 Birtcher Drive  
Lake Forest, CA 92630-1790

Ms. Kristal Davis Fadtker  
Wildermuth Environmental, Inc.  
23692 Birtcher Drive  
Lake Forest, CA 92630-1790

Ms. Maria Mendoza  
Wildermuth Environmental, Inc.  
23692 Birtcher Drive  
Lake Forest, CA 92630-1790

Ms. Julie Salinas  
Beaumont Cherry Valley Water District  
560 Magnolia Avenue  
Beaumont, CA 92223

Mr. Joe Aklufi, Esq.  
Aklufi and Wysocki  
3403 Tenth Street, Suite 610  
Riverside, CA 92501

Mr. John Jeter  
Board President  
San Geronio Pass Water Agency  
1210 Beaumont Ave  
Beaumont, CA 92223

Ms. Barbara Voigt  
Director  
San Geronio Pass Water Agency  
1210 Beaumont Ave  
Beaumont, CA 92223

Mr. Dick Larsen  
Director  
San Geronio Pass Water Agency  
1210 Beaumont Ave  
Beaumont, CA 92223

Mr. Ray Morris  
Board Vice President  
San Geronio Pass Water Agency  
1210 Beaumont Ave  
Beaumont, CA 92223

Mr. Ray Lewis (Deceased)  
Director  
San Geronio Pass Water Agency  
1210 Beaumont Ave  
Beaumont, CA 92223

Ms. Patsy Reeley  
10096 Live Oak Avenue  
Cherry Valley, CA 92223

Ms. Luwana Ryan  
9574 Mountain View Ave.  
Cherry Valley, CA 92223

**APPENDIX C**  
**ADOPTED BUDGET**

**Beaumont Basin Watermaster**  
**FY 2006-2007 Budget**

<u>Acct#</u>	<u>TO #</u>		<u>Adopted Original Budget</u>	<u>W-1006 to FY 2006 Y/E Actual</u>	<u>W-1007 Tentative 3/13/07</u>	<u>Revised Budget</u>	<u>Rev Received Exp Paid</u>	<u>Remaining to Receive or Pay</u>
<b>MEMBER CONTRIBUTIONS</b>								
--	--	FY 2006 Fund Balance Carryover - ACTUAL	(40,000.00)	(19,724.95)		(59,724.95)	59,724.95	0.00
3105	--	City of Beaumont	(84,500.00)			(84,500.00)	84,500.00	0.00
3110	--	Beaumont Cherry Valley WD	(84,500.00)			(84,500.00)	84,500.00	0.00
3115	--	Yucaipa Valley Water District	(84,500.00)			(84,500.00)	84,500.00	0.00
3120	--	City of Banning	(84,500.00)			(84,500.00)	49,500.00	(35,000.00)
3125	--	South Mesa Water Company	(49,500.00)			(49,500.00)	49,500.00	0.00
<b>TOTAL BUDGET CONTRIBUTION (REVENUE)</b>			<b>(427,500.00)</b>	<b>(19,724.95)</b>	<b>0.00</b>	<b>(447,224.95)</b>	<b>412,224.95</b>	<b>(35,000.00)</b>
<b>EXPENSES:</b>							<b>Expenses Paid</b>	
5000	--	Interest Earned	0.00			0.00	15.58	15.58
5001	1	JAS Chief of Watermaster Services (\$4250 per month)	51,000.00			51,000.00	(51,000.00)	0.00
5010	2	Misc & Meetings (TO#2=\$5,000)	5,000.00	724.95		5,724.95	(4,448.40)	1,276.55
5020	3	WEI Acquisition/Computation & Annual Report	20,000.00			20,000.00	(18,502.84)	1,497.16
5040	--	Annual Audit	1,500.00			1,500.00	0.00	1,500.00
5060	4	WEI General Engineering	25,000.00			25,000.00	(18,700.91)	6,299.09
5062	--	WEI Subsidence Monitoring Program - STWMA	95,000.00			95,000.00	(95,000.00)	0.00
5063	6	WEI Groundwater Level Monitoring Program	25,000.00		6,000.00	31,000.00	(30,980.60)	19.40
5064	--	Meter Installation	10,000.00			10,000.00	0.00	10,000.00
5065	7	WEI Update of Water Demand and Supply Projections	10,000.00			10,000.00	(3,207.50)	6,792.50
5066	8	WEI Biennial Engineer's Report	30,000.00			30,000.00	(29,980.00)	20.00
5070	--	A&W General Legal (A&W \$150 per hour)	10,000.00			10,000.00	(9,339.50)	660.50
5071	9	WEI Conjunctive-Use Marketing	10,000.00			10,000.00	(5,137.98)	4,862.02
5072	10	WEI Salt Mitigation Fee Implementation	30,000.00			30,000.00	(30,000.00)	0.00
5073	11	WEI Regional Resource Optimization Scoping Work	100,000.00			100,000.00	(77,896.42)	22,103.58
5080	--	Reserve	5,000.00	19,000.00	(6,000.00)	18,000.00	0.00	18,000.00
<b>TOTAL BUDGET EXPENSES</b>			<b>427,500.00</b>	<b>19,724.95</b>	<b>0.00</b>	<b>447,224.95</b>	<b>(374,178.57)</b>	<b>73,046.38</b>
<b>Difference of Revenue Received &amp; Expenses Paid</b>							<b>38,046.38</b>	
							<b>Cash fund Balance</b>	

Beaumont Basin Watermaster FY 2006-2007  
Budget Member Contributions and Expenses

Watermaster FY 2007  
June 2007

Invoice		Invoice		Date Paid		Check #	Ck Amount	GL #	Savings Interest Earned	Chief of WM Services- TO#1	Misc. & Meetings - TO#2	Acq/Com- putation of Prod Data- TO#3	Annual Audit	General Engineering - TO#4	Substance Monitoring Prgm- STWMA	Groundwater Monitoring- TO#6	Meter Installation	Update of Water Demand- TO#7	Biennial Engineer's Report- TO#8	General Legal	Conjunctive Use Mktg- TO#9	Salt Mitigation Fee- TO#10	Regional Resource- TO#11	Reserves	Budget Total
Date	Number							TO #	5000	5001	5010	5020	5040	5060	5062	5063	5064	5065	5066	5070	5071	5072	5073	5080	
									0.00	51,000.00	5,724.95	20,000.00	1,500.00	25,000.00	95,000.00	31,000.00	10,000.00	10,000.00	30,000.00	10,000.00	10,000.00	30,000.00	100,000.00	18,000.00	447,224.95
							0.00																		0.00
07/25/06	July 2006 - A&W	08/14/06	1100	(114.50)																(114.50)					(114.50)
07/22/06	July 2006 - JAS	08/14/06	1101	(4,250.00)	1					(4,250.00)															(4,250.00)
08/22/06	Aug 2006 - JAS	09/13/06	1102	(4,250.00)	1					(4,250.00)															(4,250.00)
08/22/06	WEI - #2006453 - TO#3	09/13/06	1103	(785.07)	3							(785.07)													(785.07)
08/22/06	WEI - #2006454 - TO#4	09/13/06	1103	(150.00)	4									(150.00)											(150.00)
	September Bank Chrg	09/15/06		(0.06)							(0.06)														(0.06)
09/26/06	Sept 2006 - A&W	10/02/06	1104	(937.50)																(937.50)					(937.50)
09/24/06	Sept 2006 - JAS	10/02/06	1105	(4,250.00)	1					(4,250.00)															(4,250.00)
09/14/06	WEI - #2006511 - TO#2	10/02/06	1106	(105.00)	2						(105.00)														(105.00)
09/14/06	WEI - #2006512 - TO#3	10/02/06	1106	(120.00)	3							(120.00)													(120.00)
09/14/06	WEI - #2006513 - TO#4	10/02/06	1106	(3,021.27)	4									(3,021.27)											(3,021.27)
09/14/06	WEI - #2006514 - TO#9	10/02/06	1106	(2,100.00)	9															(2,100.00)					(2,100.00)
09/14/06	WEI - #2006515 - TO#10	10/02/06	1106	(4,570.00)	10																(4,570.00)				(4,570.00)
09/30/06	Qtr ended 9/30/06 interest			7.89			7.89																		7.89
10/31/06	Bank Acct Analysis Fee			(5.50)							(5.50)														(5.50)
10/25/06	Oct 2006 - JAS	11/13/06	1107	(4,250.00)	1					(4,250.00)															(4,250.00)
10/31/06	Oct 2006 - A&K	11/13/06	1108	(937.50)																(937.50)					(937.50)
10/17/06	WEI - #2006578 - TO#2	11/13/06	1109	(560.10)	2						(560.10)														(560.10)
10/17/06	WEI - #2006579 - TO#3	11/13/06	1109	(3,675.00)	3							(3,675.00)													(3,675.00)
10/17/06	WEI - #2006580 - TO#4	11/13/06	1109	(921.77)	4									(921.77)											(921.77)
10/17/06	WEI - #2006581 - TO#6	11/13/06	1109	(2,827.50)	6											(2,827.50)									(2,827.50)
10/17/06	WEI - #2006582 - TO#10	11/13/06	1109	(721.80)	10																	(721.80)			(721.80)
11/25/06	Nov 2006 - JAS	12/13/06	1110	(4,250.00)	1					(4,250.00)															(4,250.00)
11/28/06	Nov 2006 - A&K	12/13/06	1111	(37.50)																(37.50)					(37.50)
12/13/06	YVWD Reimbursement	12/13/06	1112	(129.00)	2						(129.00)														(129.00)
11/14/06	WEI - #2006665 - TO#3	12/13/06	1113	(3,081.25)	3							(3,081.25)													(3,081.25)
11/14/06	WEI - #20066666 - TO#6	12/13/06	1113	(10,988.27)	6											(10,988.27)									(10,988.27)
11/14/06	WEI - #20066667-TO#11	12/13/06	1113	(8,164.66)	11																	(8,164.66)			(8,164.66)
11/13/06	STWMA - #S-121	12/13/06	1114	(95,000.00)											(95,000.00)										(95,000.00)
12/25/06	Dec 2006 - JAS	01/10/07	1115	(4,250.00)	1					(4,250.00)															(4,250.00)
12/15/06	WEI - #2006750 - TO#3	01/10/07	1116	(4,295.15)	3							(4,295.15)													(4,295.15)
12/15/06	WEI - #2006751- TO#4	01/10/07	1116	(1,672.75)	4									(1,672.75)											(1,672.75)
12/15/06	WEI - #2006752 - TO#6	01/10/07	1116	(11,184.23)	6											(11,184.23)									(11,184.23)
12/15/06	WEI - #2006753 - TO#10	01/10/07	1116	(625.00)	10																(625.00)				(625.00)
12/15/06	WEI - #2006754 - TO#11	01/10/07	1116	(2,279.64)	11																	(2,279.64)			(2,279.64)
12/31/06	Qtr ended 12/31/06 interest			4.56			4.56																		4.56
01/22/07	Jan 2007 - JAS	02/07/07	1117	(4,250.00)	1					(4,250.00)															(4,250.00)
01/30/07	Jan 2007 - A&K	02/07/07	1118	(1,237.50)																(1,237.50)					(1,237.50)
01/18/07	WEI - #2006826 - TO#2	02/07/07	1119	(1,959.51)	2						(1,959.51)														(1,959.51)
01/18/07	WEI - #2006827 - TO#3	02/07/07	1119	(3,019.80)	3							(3,019.80)													(3,019.80)
01/18/07	WEI - #2006828 - TO#4	02/07/07	1119	(3,345.30)	4									(3,345.30)											(3,345.30)
01/18/07	WEI - #2006829 - TO#7	02/07/07	1119	(687.50)	7													(687.50)							(687.50)
01/18/07	WEI - #2006830 - TO#10	02/07/07	1119	(7,819.75)	10																(7,819.75)				(7,819.75)
01/18/07	WEI - #2006831 - TO#11	02/07/07	1119	(8,417.04)	11																	(8,417.04)			(8,417.04)
02/20/07	Feb 2007 - JAS	03/08/07	1120	(4,250.00)	1					(4,250.00)															(4,250.00)
02/27/07	Feb 2007 - A&K	03/08/07	1121	(2,100.00)																(2,100.00)					(2,100.00)
02/19/07	WEI - #2007066 - TO#2	03/08/07	1122	(1,689.23)	2						(1,689.23)														(1,689.23)
02/19/07	WEI - #2007067 - TO#3	03/08/07	1122	(1,383.26)	3							(1,383.26)													(1,383.26)
02/19/07	WEI - #2007068 - TO#4	03/08/07	1122	(1,200.00)	4									(1,200.00)											(1,200.00)
02/19/07	WEI - #2007069 - TO#6	03/08/07	1122	(2,699.30)	6											(2,699.30)									(2,699.30)
02/19/07	WEI - #2007070 - TO#10	03/08/07	1122	(9,228.00)	10																(9,228.00)				(9,228.00)
02/19/07	WEI - #2007071 - TO#11	03/08/07	1122	(5,864.71)	11																	(5,864.71)			(5,864.71)
03/23/07	Mar 2007 - JAS	04/06/07	2001	(4,250.00)	1					(4,250.00)															(4,250.00)
03/27/07	Mar 2007 - A&K	04/06/07	2002	(862.50)																(862.50)					(862.50)
03/21/07	WEI - #2007156 - TO#4	04/06/07	2003	(3,826.48)	4									(3,826.48)											(3,826.48)
03/21/07	WEI - #2007157 - TO#6	04/06/07	2003	(550.00)	6											(550.00)									(550.00)
03/21/07	WEI - #2007158 - TO#7	04/06/07	2003	(770.00)	7													(770.00)							(770.00)
03/21/07	WEI - #2007159 - TO#10	04/06/07	2003	(4,856.25)	10																(4,856.25)				(4,856.25)

Beaumont Basin Watermaster FY 2006-2007  
Budget Member Contributions and Expenses

Watermaster FY 2007  
June 2007

						Savings Interest Earned	Chief of WM Services- TO#1	Misc. & Meetings - TO#2	Acq/Com-putation of Prod Data- TO#3	Annual Audit	General Engineering - TO#4	Substance Monitoring Prgm- STWMA	Groundwater Monitoring- TO#6	Meter Installation	Update of Water Demand- TO#7	Biennial Engineer's Report- TO#8	General Legal	Conjunctive Use Mktg- TO#9	Salt Mitigation Fee- TO#10	Regional Resource- TO#11	Reserves	Budget Total
Invoice Date	Invoice Number	Date Paid	Check #	Ck Amount	GL # TO #	5000 0.00	5001 51,000.00	5010 5,724.95	5020 20,000.00	5040 1,500.00	5060 25,000.00	5062 95,000.00	5063 31,000.00	5064 10,000.00	5065 10,000.00	5066 30,000.00	5070 10,000.00	5071 10,000.00	5072 30,000.00	5073 100,000.00	5080 18,000.00	447,224.95
03/21/07	WEI - #2007160 - TO#11	04/06/07	2003	(10,053.14)	11															(10,053.14)		(10,053.14)
04/23/07	Apr 2007 - JAS	05/07/07	2004	(4,250.00)	1		(4,250.00)															(4,250.00)
04/24/07	Apr 2007 - A&K	05/07/07	2005	(412.50)														(412.50)				(412.50)
04/18/07	WEI-#2007225	05/07/07	2006	(2,038.31)	3				(2,038.31)													(2,038.31)
04/18/07	WEI-#2007226	05/07/07	2006	(109.97)	4						(109.97)											(109.97)
04/18/07	WEI-#2007227	05/07/07	2006	(10,920.00)	8													(10,920.00)				(10,920.00)
04/18/07	WEI-#2007228	05/07/07	2006	(2,179.20)	10														(2,179.20)			(2,179.20)
04/18/07	WEI-#2007243	05/07/07	2006	(23,244.53)	11															(23,244.53)		(23,244.53)
05/23/07	May 2007 -JAS	06/11/07	2008	(4,250.00)	1		(4,250.00)															(4,250.00)
05/29/07	May 2007- A&K	06/11/07	2009	(1,087.50)														(1,087.50)				(1,087.50)
05/22/07	WEI-2007305	06/11/07	2010	(105.00)	3				(105.00)													(105.00)
05/22/07	WEI-2007306	06/11/07	2010	(35.00)	7										(35.00)							(35.00)
05/22/07	WEI-2007307	06/11/07	2010	(5,065.00)	8												(5,065.00)					(5,065.00)
05/22/07	WEI-2007308	06/11/07	2010	(7,216.45)	11															(7,216.45)		(7,216.45)
06/23/07	June 2007 - JAS	06/29/07	2011	(4,250.00)			(4,250.00)															(4,250.00)
06/26/07	June 2007 - A&K	06/29/07	2012	(1,612.50)														(1,612.50)				(1,612.50)
06/13/07	WEI-2007370	06/29/07	2013	(4,103.37)																		(4,103.37)
06/13/07	WEI-2007371	06/29/07	2013	(585.00)									(585.00)									(585.00)
06/13/07	WEI-2007372	06/29/07	2013	(1,190.00)											(1,190.00)							(1,190.00)
06/13/07	WEI-2007373	06/29/07	2013	(11,485.00)													(11,485.00)					(11,485.00)
06/13/07	WEI-2007374	06/29/07	2013	(6,953.75)																(6,953.75)		(6,953.75)
06/25/07	WEI-2007389	06/29/07	2014	(350.00)																		(350.00)
06/25/07	WEI-2007390	06/29/07	2014	(2,146.30)										(2,146.30)								(2,146.30)
06/25/07	WEI-2007391	06/29/07	2014	(525.00)											(525.00)							(525.00)
06/25/07	WEI-2007392	06/29/07	2014	(2,510.00)													(2,510.00)					(2,510.00)
06/25/07	WEI-2007393	06/29/07	2014	(3,037.98)															(3,037.98)			(3,037.98)
06/25/07	WEI-2007394	06/29/07	2014	(5,702.50)																(5,702.50)		(5,702.50)
06/30/07	Qtr ended 6/30/07 int			3.13		3.13																3.13
FUND BALANCE				38,046.38		15.58	0.00	1,276.55	1,497.16	1,500.00	6,299.09	0.00	19.40	10,000.00	6,792.50	20.00	660.50	4,862.02	0.00	22,103.58	18,000.00	73,046.38
Fund Recap																						
Checking Account Balance				31,856.42																		
Savings Account Balance				6,189.96																		
Total Fund Balance				38,046.38																		



**APPENDIX D**  
**LETTER – ANNUAL AUDIT**

## Travis Hickey, CPA

---

34590 County Line Road  
Suite 3  
Yucaipa, CA 92399

Ph: (909) 795-9681  
Fax: (909) 583-0055  
E-mail: Travis@hickey-cpa.com

Beaumont Basin Watermaster  
Office of the Watermaster Secretary  
c/o Yucaipa Valley Water District  
P.O. Box 730  
Yucaipa, CA 92399

We have examined Beaumont Basin Watermaster's compliance of all assessments and expenditures with the Rules and Regulations of the Beaumont Basin Watermaster during the period of July 1, 2006 through June 30, 2007. Management is responsible for Beaumont Watermaster's compliance with those requirements. Our responsibility is to express an opinion on Beaumont Basin Watermaster's compliance with the Rules and Regulations of the Beaumont Basin Watermaster based on our examination.

Our examination was conducted in accordance with attestation standards established by the American Institute of Certified Public Accountants and, accordingly, included examining on a test basis, evidence about Beaumont Basin Watermaster's compliance with these requirements and performing such other procedures as we considered necessary in the circumstances. We believe that our examination provides a reasonable basis for our opinion. Our examination does not provide legal determination on Beaumont Basin Watermaster's compliance with specified requirements.

In our opinion, Beaumont Basin Watermaster complied, in all material respects, with the aforementioned requirements during the period July 1, 2006 through June 30, 2007.

This report is solely intended for the information and the use of the Watermaster Members and management and is not intended to be and should not be used by anyone other than these specified parties.

*Travis Hickey, CPA*

Yucaipa, California  
December 18, 2007