

# Notice and Agenda Special Meeting of the Beaumont Basin Watermaster

**Wednesday, March 6, 2024 at 11:00 a.m.**

Meeting Location:  
Beaumont-Cherry Valley Water District  
560 Magnolia Avenue • Beaumont, California 92223

*This meeting is hereby noticed pursuant to  
California Government Code Section 54950 et. seq.*

---

Members of the Watermaster Committee:

City of Banning	Beaumont-Cherry Valley Water District
City of Beaumont	South Mesa Water Company
Yucaipa Valley Water District	

---

*Remote attendance options are provided primarily as a matter of convenience to the public. Unless a Watermaster Committee member is attending remotely pursuant to provisions of GC 54953 et. seq., the public, in-person meeting will not stop or be otherwise suspended should a technological interruption occur with respect to the Zoom teleconference or call-in line listed on the agenda. Members of the public are encouraged to attend BBWM meetings in person at the above address, or remotely using the options listed.*

### **Online Meeting Participation Link:**

<https://us02web.zoom.us/j/81638720446?pwd=UnNZcC9TbGZzTGtFuMHdhVkJRMblczQT09>

**Telephone: (669) 900-9128 / Meeting ID: 816-3872-0446 / Passcode: 636756**  
**One-Tap Mobile: +16699009128,,81638720446#,,,,\*636756#**

*For Public Comment, use the "**Raise Hand**" feature if on the video call when prompted, if dialing in, please **dial \*9 to "Raise Hand"** when prompted*

*Meeting materials are available on the Watermaster website:*  
**<https://beaumontbasinwatermaster.org/>**

---

**BEAUMONT BASIN WATERMASTER COMMITTEE  
SPECIAL MEETING – WORKSHOP  
MARCH 6, 2024**

---

**I. Call to Order**

**II. Roll Call**

<b>Committee Member Agency</b>	<b>Primary Representative</b>	<b>Alternate</b>
City of Banning	Arturo Vela, Chair	Nathan Smith
City of Beaumont	Vacant	Robert Vestal
Beaumont-Cherry Valley Water District	Daniel Jaggars	Mark Swanson
South Mesa Water Company	Dave Armstrong	Brittany Lim
Yucaipa Valley Water District	Joseph Zoba	Jennifer Ares

**III. Pledge of Allegiance**

**IV. Public Comments** At this time, members of the public may address the Beaumont Basin Watermaster on matters within its jurisdiction; however, no action or discussion may take place on any item not on the agenda. To provide comments on specific agenda items, please complete a Request to Speak form and provide that form to the Secretary prior to the commencement of the meeting, or, RAISE HAND electronically or Press \*9 when prompted for public comment.

**ACTION ITEMS**

*Action may be taken on any item on the agenda.*

**V. Workshop / Discussion Items**

- A. Discussion on Process and Categorization of Water Sources in Annual Report and Use of Different Types of Storage Accounts [Memorandum No. 24-07, Page 6]
- B. Discussion on Management Areas [Memorandum No. 24-08, Page 29]
- C. Update on Data Management System [No written report]
- D. Identify next steps

**VI. Topics for Future Meetings**

	Item	Date Listed
A	Development of a Recycled Water Policy	3/27/2019
B	Development of a return flow accounting policy	3/27/2019
C	Development of a methodology and policy to account for groundwater storage losses in the basin / groundwater management	3/27/2019
D	Procurement Policy including thresholds for RFP process	8/17/2021
E	Incidental discharge	10/6/2021
F	Monitoring of future west side well sites and methodologies, and potential collaboration with USGS	10/5/2022
G	Direction for use of different types of storage accounts	8/2/2023
H	Discussion on what to do when an Appropriator goes negative	10/4/2023 and 11/1/2023

**VII. Comments from the Watermaster Committee Members**

**VIII. Announcements**

A. 2024 Meeting Dates:

- Wednesday, April 3 at 11 a.m.                      Regular Meeting
- Wednesday, June 5 at 11 a.m.                      Regular Meeting
- Wednesday, August 7 at 11 a.m.                      Regular Meeting
- Wednesday, October 2 at 11 a.m.                      Regular Meeting
- Wednesday, December 4 at 11 a.m.                      Regular Meeting

**IX. Adjournment**

**NOTICES**

**AVAILABILITY OF AGENDA MATERIALS** - Agenda exhibits and other writings that are disclosable public records distributed to all or a majority of the members of the Beaumont Basin Watermaster Committee in connection with a matter subject to discussion or consideration at an open meeting of the Committee are available for public inspection in the Office of the Watermaster Secretary, at 560 Magnolia Avenue, Beaumont, California ("Office") during business hours, Monday through Thursday from 7:30 a.m. to 5 p.m. If such writings are distributed to members of the Committee less than 72 hours prior to the meeting, they will be available from the Office at the same time or within 24 hours' time as they are distributed to Board Members, except that if such writings are distributed one hour prior to, or during the meeting, they can be made available in the Board Room at the District Office. Materials may also be available on the Watermaster website: <https://beaumontbasinwatermaster.org/>.

**REVISIONS TO THE AGENDA** - In accordance with §54954.2(a) of the Government Code (Brown Act), revisions to this Agenda may be made up to 72 hours before the Board Meeting, if necessary, after mailings are completed. Interested persons wishing to receive a copy of the set Agenda may pick one up at the Office, located at 560 Magnolia Avenue, Beaumont, California, or download from the website up to 72 hours prior to the Meeting.

**REQUIREMENTS RE: DISABLED ACCESS** - In accordance with §54954.2(a), requests for a disability related modification or accommodation, including auxiliary aids or services, in order to attend or participate in a meeting, should be made to the Office, at least 48 hours in advance of the meeting to ensure availability of the requested service or accommodation. The Office may be contacted by telephone at (951) 845-9581, email at [info@bcvwd.org](mailto:info@bcvwd.org) or in writing to the Beaumont Basin Watermaster Committee, c/o Beaumont-Cherry Valley Water District, 560 Magnolia Avenue, Beaumont, California 92223.

#### **CERTIFICATION OF POSTING**

A copy of the foregoing notice was posted near the regular meeting place of the Beaumont Basin Watermaster Committee and to its website at least 24 hours in advance of the meeting (Government Code §54954.2(a)).

# **Discussion Items**

**BEAUMONT BASIN WATERMASTER  
MEMORANDUM NO. 24-07**

**Date:** March 6, 2024

**From:** Hannibal Blandon, ALDA Inc.

**Subject:** Discussion on Process and Categorization of Water Sources in Annual Report and Use of Different Types of Storage Accounts

**Recommendation:** No recommendation. For review and comment.

---

At the December 6, 2023 Beaumont Basin regular meeting the Watermaster Committee reviewed the parameters included in the calculation of the Appropriator's Production Right. This issue was revisited at the January 10, 2024 Beaumont Special meeting including discussions on whether there is a benefit in developing an order of categorization of the various supply sources available to Appropriators. It was concluded that there was no need to establish different categories of water buckets.

The Appropriators production rights along with the proper accounting of the various water sources were requested by the Technical Committee to be incorporated into the 2023 Draft of the Consolidated Annual and Engineering Report. Sections 3-5 and 3-6 (attached) of the annual report have been rewritten, along with accompanying tables and figures, for your consideration, review, and comments.

**Attachments:**

1. Section 3-5 and 3-6 TEXT - Feb 27, 2024
2. Tables 3-8 n 3-9 n Figures 3-5 th 3-9 - Feb 28, 2024
3. Figure 3-10 - Feb 27, 2024
4. Figure 3-11 - Feb 27, 2024

## 3.5 Appropriators Production Right

The Appropriator's Production Right, as defined in Subparagraph I.3.B. of the Judgment, "consists of an Appropriator's share of Operating Yield, plus (1) any water acquired by an Appropriator from an Overlying Producer or other Appropriator pursuant to this Judgment, (2) any water withdrawn from the Appropriator's storage account, (3) and New Yield created by the Appropriator."

The Operating Yield, as defined in subparagraph I.3.M of the Judgment, is "the maximum quantity of water which can be produced annually by the Appropriators from the Beaumont Basin, which quantity consists of Appropriative Water plus Temporary Surplus."

Water Acquired by Appropriators includes Transfer of Overlying Water Rights to Appropriators and transfers between Appropriators and/or SGPWA. At present, the YVWD is the only Appropriator that has benefited from transfers of Overlying Water Rights, as discussed earlier in this Section. Transfers between Appropriators have taken place in the past between SMWC, as the Transferor, and the City of Banning and BCVWD, as the Transferees.

New Yield, as defined in subparagraph I.3.L, is "increases in yield in quantities greater than historical amounts from sources of supply including, but not limited to, capture of available storm flows, by means of projects constructed after February 20, 2003, as determined by the Watermaster. Rising Water, as defined in Section 4.2 of the Rules and Regulations, is another potential source of New Yield. As of present, no project has been defined or approved by Watermaster that has resulted in New Yield.

Water from storage is another component included in the calculation of Appropriators Production Right. It refers to the amount of water that an Appropriator deems necessary to be taken out of its storage account to meet annual supply requirements. Appropriators have been able to withdraw an equivalent amount of groundwater from their respective storage accounts to balance out their overproduction in any given year. However, the possibility exists in the future when an Appropriator may not have water in their respective storage account and/or may not be able to acquire sufficient imported water for groundwater recharge to make up their difference.

Table 3-8 presents the Appropriator's Production Right on an annual basis for each of the Appropriators for the 2003-23 period including the various categories of supply sources available to Appropriators to meet their annual water demands.

## 3.6 Storage Accounting

Section 6.7 of the Watermaster Rules and Regulations indicates that Watermaster shall calculate additions, extractions, and losses of all water stored and any losses of water supplies or Safe Yield resulting from such water stored. This section of the Rules and Regulations further indicates that Watermaster shall keep and maintain for public record an annual accounting thereof. While additions (spreading) and extractions (pumping) are easily quantifiable, losses from storage are more difficult to estimate. The completion of the "Beaumont Basin Storage Loss Analysis" (September 2018) estimates storage losses under

various spreading scenarios; however, Watermaster has not developed a methodology to adjust storage accounts and their corresponding losses.

### 3.6.1 Annual Storage Consolidation

Consistent with the new reporting format to document extractions, spreading and other groundwater activities on a calendar year basis, Table 3-9 represents the consolidation of each Appropriator’s storage account from CY 2003 through CY 2023. This table includes on an annual basis, Appropriators production rights, as defined in Section 3.5 and documented in Table 3-8, annual production, and any supplemental water that may have been acquired during the year. It also documents the amount of water that may be taken from storage to meet annual water demands.

At the end of 2023, an overall total of 96,148.20 ac-ft of water were stored in the Basin for future use; this total increased in CY 2023 by 12,641.70 ac-ft to a cumulative total of 108,789.90 ac-ft. As a result of the significant amount of imported water from SWP recharged in 2023, the amount of water in storage ranks amongst the highest since the 2003 adjudication. The amount of water in storage by party at the beginning and end of CY 2023 is presented below. Figure 3-10 compares the amount of water in storage to the storage limit for each party with storage accounts while Figure 3-11 presents storage totals by agency for the most recent 10-year period.

Agency / Party to the Judgment	Calendar Year 2023 (ac-ft)		
	Beginning	Ending	Change
City of Banning	46,569.9	47,650.9	1,081.0
BCVWD	23,193.1	32,884.1	9,691.0
City of Beaumont	0.0	0.0	0.0
South Mesa Water Company	10,224.2	10,506.0	281.8
Yucaipa Valley Water District	16,160.4	16,855.3	694.9
Morongo Band of Mission Indians	0.0	0.0	0.0
San Geronio Pass Water Agency	0.6	893.6	893.0
<b>TOTAL in Storage</b>	<b>96,148.2</b>	<b>108,789.9</b>	<b>12,641.7</b>

**Table 3-8  
Appropriator's Production Right**

**Attachment 2**

Calendar Year	Operating Yield		Water Acquired		Water From Storage	New Yield		Appropriator 's Production Right
	Temporary Surplus Water	Appropriative Water Right	Transfer of Overlying Water Rights to Appropriator	Transfers Between Appropriators /SGPWA		Capture of Available Stream Flow	Increase Capture of Rising Water / Other Sources	
<i>City of Banning</i>								
2003	2,514.5	0.0	0.0	0.0	0.0	0.0	0.0	2,514.5
2004	5,029.0	0.0	0.0	0.0	0.0	0.0	0.0	5,029.0
2005	5,029.0	0.0	0.0	0.0	0.0	0.0	0.0	5,029.0
2006	5,029.0	0.0	0.0	0.0	0.0	0.0	0.0	5,029.0
2007	5,029.0	0.0	0.0	1,500.0	0.0	0.0	0.0	6,529.0
2008	5,029.0	592.2	0.0	0.0	0.0	0.0	0.0	5,621.2
2009	5,029.0	1,594.7	0.0	0.0	0.0	0.0	0.0	6,623.7
2010	5,029.0	1,683.8	0.0	0.0	0.0	0.0	0.0	6,712.8
2011	5,029.0	1,588.2	0.0	0.0	0.0	0.0	0.0	6,617.2
2012	5,029.0	1,679.5	0.0	0.0	0.0	0.0	0.0	6,708.5
2013	2,514.5	1,816.1	0.0	0.0	0.0	0.0	0.0	4,330.6
2014	0.0	1,826.7	0.0	0.0	758.4	0.0	0.0	2,585.1
2015	0.0	2,097.5	0.0	0.0	0.0	0.0	0.0	2,097.5
2016	0.0	2,099.1	0.0	0.0	0.0	0.0	0.0	2,099.1
2017	0.0	2,063.2	0.0	0.0	0.0	0.0	0.0	2,063.2
2018	0.0	2,000.6	0.0	0.0	260.2	0.0	0.0	2,260.8
2019	0.0	1,408.4	0.0	0.0	712.9	0.0	0.0	2,121.3
2020	0.0	1,450.3	0.0	0.0	1,098.3	0.0	0.0	2,548.6
2021	0.0	1,497.2	0.0	60.0	2,110.9	0.0	0.0	3,668.1
2022	0.0	1,350.3	0.0	0.0	2,243.4	0.0	0.0	3,593.7
2023	0.0	1,407.9	0.0	0.0	0.0	0.0	0.0	1,407.9

**Table 3-8  
Appropriator's Production Right**

Calendar Year	Operating Yield		Water Acquired		Water From Storage	New Yield		Appropriator 's Production Right
	Temporary Surplus Water	Appropriative Water Right	Transfer of Overlying Water Rights to Appropriator	Transfers Between Appropriators /SGPWA		Capture of Available Stream Flow	Increase Capture of Rising Water / Other Sources	
<b><i>Beaumont Cherry Valley Water District</i></b>								
2003	3,401.0	0.0	0.0	0.0	110.9	0.0	0.0	3,511.9
2004	6,802.0	0.0	0.0	0.0	71.9	0.0	0.0	6,873.9
2005	6,802.0	0.0	0.0	0.0	223.6	0.0	0.0	7,025.6
2006	6,802.0	0.0	0.0	0.0	2,252.1	0.0	0.0	9,054.1
2007	6,802.0	0.0	0.0	1,500.0	3,081.3	0.0	0.0	11,383.3
2008	6,802.0	801.0	0.0	2,500.0	607.5	0.0	0.0	10,710.5
2009	6,802.0	2,156.8	0.0	2,000.0	0.0	0.0	0.0	10,958.8
2010	6,802.0	2,277.4	0.0	0.0	341.9	0.0	0.0	9,421.3
2011	6,802.0	2,148.1	0.0	3,500.0	0.0	0.0	0.0	12,450.1
2012	6,802.0	2,271.5	0.0	0.0	1,088.5	0.0	0.0	10,162.0
2013	3,401.0	2,456.4	0.0	0.0	5,240.0	0.0	0.0	11,097.4
2014	0.0	2,470.6	0.0	0.0	8,334.9	0.0	0.0	10,805.5
2015	0.0	2,836.9	0.0	0.0	6,135.8	0.0	0.0	8,972.8
2016	0.0	2,839.1	0.0	0.0	7,320.7	0.0	0.0	10,159.8
2017	0.0	2,790.6	0.0	0.0	8,860.1	0.0	0.0	11,650.7
2018	0.0	2,705.9	0.0	0.0	9,503.3	0.0	0.0	12,209.2
2019	0.0	1,904.9	0.0	0.0	9,236.0	0.0	0.0	11,140.9
2020	0.0	1,961.6	0.0	0.0	10,577.6	0.0	0.0	12,539.2
2021	0.0	2,025.0	0.0	447.8	10,136.7	0.0	0.0	12,609.5
2022	0.0	1,826.3	0.0	0.0	10,664.1	0.0	0.0	12,490.4
2023	0.0	1,904.3	0.0	0.0	8,309.0	0.0	0.0	10,213.3

**Table 3-8  
Appropriator's Production Right**

Calendar Year	Operating Yield		Water Acquired		Water From Storage	New Yield		Appropriator 's Production Right	
	Temporary Surplus Water	Appropriative Water Right	Transfer of Overlying Water Rights to Appropriator	Transfers Between Appropriators /SGPWA		Capture of Available Stream Flow	Increase Capture of Rising Water / Other Sources		
<i>City of Beaumont</i>									
2003	0.0	0.0	0.0	0.0	0.0	0.0	0.0	0.0	0.0
2004	0.0	0.0	0.0	0.0	0.0	0.0	0.0	0.0	0.0
2005	0.0	0.0	0.0	0.0	0.0	0.0	0.0	0.0	0.0
2006	0.0	0.0	0.0	0.0	0.0	0.0	0.0	0.0	0.0
2007	0.0	0.0	0.0	0.0	0.0	0.0	0.0	0.0	0.0
2008	0.0	0.0	0.0	0.0	0.0	0.0	0.0	0.0	0.0
2009	0.0	0.0	0.0	0.0	0.0	0.0	0.0	0.0	0.0
2010	0.0	0.0	0.0	0.0	0.0	0.0	0.0	0.0	0.0
2011	0.0	0.0	0.0	0.0	0.0	0.0	0.0	0.0	0.0
2012	0.0	0.0	0.0	0.0	0.0	0.0	0.0	0.0	0.0
2013	0.0	0.0	0.0	0.0	0.0	0.0	0.0	0.0	0.0
2014	0.0	0.0	0.0	0.0	0.0	0.0	0.0	0.0	0.0
2015	0.0	0.0	0.0	0.0	0.0	0.0	0.0	0.0	0.0
2016	0.0	0.0	0.0	0.0	0.0	0.0	0.0	0.0	0.0
2017	0.0	0.0	0.0	0.0	0.0	0.0	0.0	0.0	0.0
2018	0.0	0.0	0.0	0.0	0.0	0.0	0.0	0.0	0.0
2019	0.0	0.0	0.0	0.0	0.0	0.0	0.0	0.0	0.0
2020	0.0	0.0	0.0	0.0	0.0	0.0	0.0	0.0	0.0
2021	0.0	0.0	0.0	0.0	0.0	0.0	0.0	0.0	0.0
2022	0.0	0.0	0.0	0.0	0.0	0.0	0.0	0.0	0.0
2023	0.0	0.0	0.0	0.0	0.0	0.0	0.0	0.0	0.0

**Table 3-8  
Appropriator's Production Right**

Calendar Year	Operating Yield		Water Acquired		Water From Storage	New Yield		Appropriator 's Production Right
	Temporary Surplus Water	Appropriative Water Right	Transfer of Overlying Water Rights to Appropriator	Transfers Between Appropriators /SGPWA		Capture of Available Stream Flow	Increase Capture of Rising Water / Other Sources	
<b>South Mesa Water Company</b>								
2003	998.0	0.0	0.0	0.0	0.0	0.0	0.0	998.0
2004	1,996.0	0.0	0.0	0.0	0.0	0.0	0.0	1,996.0
2005	1,996.0	0.0	0.0	0.0	0.0	0.0	0.0	1,996.0
2006	1,996.0	0.0	0.0	0.0	0.0	0.0	0.0	1,996.0
2007	1,996.0	0.0	0.0	-3,000.0	1,669.8	0.0	0.0	665.8
2008	1,996.0	235.2	0.0	-2,500.0	739.7	0.0	0.0	470.9
2009	1,996.0	633.2	0.0	-2,000.0	0.0	0.0	0.0	629.2
2010	1,996.0	668.6	0.0	0.0	0.0	0.0	0.0	2,664.6
2011	1,996.0	630.6	0.0	-3,500.0	1,293.3	0.0	0.0	419.9
2012	1,996.0	666.9	0.0	0.0	0.0	0.0	0.0	2,662.9
2013	998.0	721.1	0.0	0.0	0.0	0.0	0.0	1,719.1
2014	0.0	725.3	0.0	0.0	0.0	0.0	0.0	725.3
2015	0.0	832.9	0.0	0.0	0.0	0.0	0.0	832.9
2016	0.0	833.5	0.0	0.0	0.0	0.0	0.0	833.5
2017	0.0	819.3	0.0	0.0	0.0	0.0	0.0	819.3
2018	0.0	794.4	0.0	0.0	0.0	0.0	0.0	794.4
2019	0.0	559.2	0.0	0.0	0.0	0.0	0.0	559.2
2020	0.0	575.9	0.0	0.0	0.0	0.0	0.0	575.9
2021	0.0	594.5	0.0	0.0	0.0	0.0	0.0	594.5
2022	0.0	536.2	0.0	0.0	38.5	0.0	0.0	574.7
2023	0.0	559.1	0.0	0.0	0.0	0.0	0.0	559.1

**Table 3-8  
Appropriator's Production Right**

Calendar Year	Operating Yield		Water Acquired		Water From Storage	New Yield		Appropriator 's Production Right
	Temporary Surplus Water	Appropriative Water Right	Transfer of Overlying Water Rights to Appropriator	Transfers Between Appropriators /SGPWA		Capture of Available Stream Flow	Increase Capture of Rising Water / Other Sources	
<i>Yucaipa Valley Water District</i>								
2003	1,086.5	0.0	0.0	0.0	75.9	0.0	0.0	1,162.4
2004	2,173.0	0.0	0.0	0.0	0.0	0.0	0.0	2,173.0
2005	2,173.0	0.0	0.0	0.0	0.0	0.0	0.0	2,173.0
2006	2,173.0	0.0	0.0	0.0	0.0	0.0	0.0	2,173.0
2007	2,173.0	0.0	0.0	0.0	0.0	0.0	0.0	2,173.0
2008	2,173.0	255.9	0.0	0.0	0.0	0.0	0.0	2,428.9
2009	2,173.0	689.0	0.0	0.0	0.0	0.0	0.0	2,862.0
2010	2,173.0	727.5	0.0	0.0	0.0	0.0	0.0	2,900.5
2011	2,173.0	686.2	0.0	0.0	0.0	0.0	0.0	2,859.2
2012	2,173.0	725.6	0.0	0.0	0.0	0.0	0.0	2,898.6
2013	1,086.5	784.7	0.0	0.0	0.0	0.0	0.0	1,871.2
2014	0.0	789.2	0.0	0.0	409.2	0.0	0.0	1,198.5
2015	0.0	906.3	0.0	0.0	0.0	0.0	0.0	906.3
2016	0.0	907.0	0.0	0.0	0.0	0.0	0.0	907.0
2017	0.0	891.5	0.0	0.0	0.0	0.0	0.0	891.5
2018	0.0	864.4	0.1	0.0	0.0	0.0	0.0	864.5
2019	0.0	608.5	64.0	0.0	0.0	0.0	0.0	672.5
2020	0.0	626.6	194.8	0.0	586.3	0.0	0.0	1,407.7
2021	0.0	646.9	366.8	0.0	214.8	0.0	0.0	1,228.5
2022	0.0	583.4	478.3	0.0	0.0	0.0	0.0	1,061.7
2023	0.0	608.3	478.3	0.0	0.0	0.0	0.0	1,086.6

**Table 3-8  
Appropriator's Production Right**

Calendar Year	Operating Yield		Water Acquired		Water From Storage	New Yield		Appropriator 's Production Right
	Temporary Surplus Water	Appropriative Water Right	Transfer of Overlying Water Rights to Appropriator	Transfers Between Appropriators /SGPWA		Capture of Available Stream Flow	Increase Capture of Rising Water / Other Sources	
<b>Totals - All Appropriators</b>								
2003	8,000.0	0.0	0.0	0.0	186.8	0.0	0.0	8,186.8
2004	16,000.0	0.0	0.0	0.0	71.9	0.0	0.0	16,071.9
2005	16,000.0	0.0	0.0	0.0	223.6	0.0	0.0	16,223.6
2006	16,000.0	0.0	0.0	0.0	2,252.1	0.0	0.0	18,252.1
2007	16,000.0	0.0	0.0	0.0	4,751.1	0.0	0.0	20,751.1
2008	16,000.0	1,884.2	0.0	0.0	1,347.2	0.0	0.0	19,231.4
2009	16,000.0	5,073.7	0.0	0.0	0.0	0.0	0.0	21,073.7
2010	16,000.0	5,357.4	0.0	0.0	341.9	0.0	0.0	21,699.2
2011	16,000.0	5,053.3	0.0	0.0	1,293.3	0.0	0.0	22,346.5
2012	16,000.0	5,343.5	0.0	0.0	1,088.5	0.0	0.0	22,432.0
2013	8,000.0	5,778.4	0.0	0.0	5,240.0	0.0	0.0	19,018.4
2014	0.0	5,811.8	0.0	0.0	9,502.5	0.0	0.0	15,314.3
2015	0.0	6,673.5	0.0	0.0	6,135.8	0.0	0.0	12,809.4
2016	0.0	6,678.6	0.0	0.0	7,320.7	0.0	0.0	13,999.3
2017	0.0	6,564.6	0.0	0.0	8,860.1	0.0	0.0	15,424.7
2018	0.0	6,365.4	0.1	0.0	9,763.4	0.0	0.0	16,128.9
2019	0.0	4,481.0	64.0	0.0	9,948.9	0.0	0.0	14,493.9
2020	0.0	4,614.4	194.8	0.0	12,262.2	0.0	0.0	17,071.4
2021	0.0	4,763.6	366.8	507.8	12,462.4	0.0	0.0	18,100.6
2022	0.0	4,296.1	478.3	0.0	12,946.1	0.0	0.0	17,720.4
2023	0.0	4,479.6	478.3	0.0	8,309.0	0.0	0.0	13,266.8

**Table 3-9  
Consolidation of Storage Accounts**

Calendar Year	Appropriator's Production Right	Appropriator's Annual Production	Additional Supplies Needed	Supplemental Water				Total Additions to or Withdrawals from Storage	Ending Storage Account Balance
				SWP Water Recharge	Recycled Water Recharge	Local Imported Water Recharge	Stormwater Recharge		
<i>City of Banning - Authorized Storage Account: 80,000 ac-ft</i>									
2003	2,514.5	2,174.2	0.0	0.0	0.0	0.0	0.0	340.3	340.3
2004	5,029.0	3,397.3	0.0	0.0	0.0	0.0	0.0	1,631.7	1,972.0
2005	5,029.0	1,808.6	0.0	0.0	0.0	0.0	0.0	3,220.4	5,192.5
2006	5,029.0	1,827.5	0.0	0.0	0.0	0.0	0.0	3,201.5	8,393.9
2007	6,529.0	2,772.6	0.0	0.0	0.0	0.0	0.0	3,756.4	12,150.3
2008	5,621.2	2,933.6	0.0	1,534.0	0.0	0.0	0.0	4,221.6	16,371.9
2009	6,623.7	2,095.0	0.0	2,741.2	0.0	0.0	0.0	7,269.8	23,641.8
2010	6,712.8	1,143.6	0.0	1,338.0	0.0	0.0	0.0	6,907.2	30,549.0
2011	6,617.2	1,341.7	0.0	800.0	0.0	0.0	0.0	6,075.5	36,624.5
2012	6,708.5	1,038.3	0.0	1,200.0	0.0	0.0	0.0	6,870.2	43,494.7
2013	4,330.6	2,100.7	0.0	1,200.0	0.0	0.0	0.0	3,430.0	46,924.7
2014	2,585.1	2,585.1	0.0	608.0	0.0	0.0	0.0	-150.4	46,774.2
2015	2,097.5	1,678.3	0.0	694.0	0.0	0.0	0.0	1,113.2	47,887.5
2016	2,099.1	1,472.7	0.0	1,477.0	0.0	0.0	0.0	2,103.4	49,990.8
2017	2,063.2	1,443.5	0.0	1,350.0	0.0	0.0	0.0	1,969.8	51,960.6
2018	2,260.8	2,260.8	0.0	500.0	0.0	0.0	0.0	239.8	52,200.4
2019	2,121.3	2,121.3	0.0	250.0	0.0	0.0	0.0	-462.9	51,737.5
2020	2,548.6	2,548.6	0.0	250.0	0.0	0.0	0.0	-848.3	50,889.2
2021	3,668.1	3,668.1	0.0	0.0	0.0	0.0	0.0	-2,110.9	48,778.3
2022	3,593.7	3,593.7	0.0	35.0	0.0	0.0	0.0	-2,208.4	46,569.9
2023	1,407.9	1,326.9	0.0	1,000.0	0.0	0.0	0.0	1,081.0	47,650.9

**Table 3-9  
Consolidation of Storage Accounts**

Calendar Year	Appropriator's Production Right	Appropriator's Annual Production	Additional Supplies Needed	Supplemental Water				Total Additions to or Withdrawals from Storage	Ending Storage Account Balance
				SWP Water Recharge	Recycled Water Recharge	Local Imported Water Recharge	Stormwater Recharge		
<b><i>Beaumont Cherry Valley Water District - Authorized Storage Account: 80,000 ac-ft</i></b>									
2003	3,511.9	3,511.9	0.0	0.0	0.0	0.0	0.0	-110.9	-110.9
2004	6,873.9	6,873.9	0.0	0.0	0.0	0.0	0.0	-71.9	-182.8
2005	7,025.6	7,025.6	0.0	0.0	0.0	0.0	0.0	-223.6	-406.4
2006	9,054.1	9,054.1	0.0	3,501.0	0.0	0.0	0.0	1,248.9	842.5
2007	11,383.3	11,383.3	0.0	4,501.0	0.0	0.0	0.0	1,419.7	2,262.2
2008	10,710.5	10,710.5	0.0	2,399.0	0.0	0.0	0.0	1,791.5	4,053.7
2009	10,958.8	10,133.9	0.0	2,741.2	0.0	0.0	0.0	3,566.1	7,619.8
2010	9,421.3	9,421.3	0.0	5,727.0	0.0	0.0	0.0	5,385.1	13,004.9
2011	12,450.1	9,431.3	0.0	7,979.0	0.0	0.0	0.0	10,997.8	24,002.8
2012	10,162.0	10,162.0	0.0	7,783.0	0.0	0.0	0.0	6,694.5	30,697.3
2013	11,097.4	11,097.4	0.0	7,403.0	0.0	0.0	0.0	2,163.0	32,860.3
2014	10,805.5	10,805.5	0.0	4,405.0	0.0	0.0	0.0	-3,929.9	28,930.4
2015	8,972.8	8,972.8	0.0	2,773.0	0.0	0.0	0.0	-3,362.8	25,567.6
2016	10,159.8	10,159.8	0.0	9,319.0	0.0	0.0	0.0	1,998.3	27,565.9
2017	11,650.7	11,650.7	0.0	13,590.0	0.0	0.0	0.0	4,729.9	32,295.8
2018	12,209.2	12,209.2	0.0	12,121.0	0.0	0.0	0.0	2,617.7	34,913.5
2019	11,140.9	11,140.9	0.0	13,645.0	0.0	0.0	0.0	4,409.0	39,322.5
2020	12,539.2	12,539.2	0.0	11,005.0	0.0	0.0	0.0	427.4	39,749.9
2021	12,609.5	12,609.5	0.0	2,468.0	0.0	0.0	0.0	-7,668.7	32,081.2
2022	12,490.4	12,490.4	0.0	1,776.0	0.0	0.0	0.0	-8,888.1	23,193.1
2023	10,213.3	10,213.3	0.0	18,000.0	0.0	0.0	0.0	9,691.0	32,884.1

**Table 3-9  
Consolidation of Storage Accounts**

Calendar Year	Appropriator's Production Right	Appropriator's Annual Production	Additional Supplies Needed	Supplemental Water				Total Additions to or Withdrawals from Storage	Ending Storage Account Balance
				SWP Water Recharge	Recycled Water Recharge	Local Imported Water Recharge	Stormwater Recharge		
<i>City of Beaumont - Authorized Storage Account: 30,000 ac-ft</i>									
2003	0.0	0.0	0.0	0.0	0.0	0.0	0.0	0.0	0.0
2004	0.0	0.0	0.0	0.0	0.0	0.0	0.0	0.0	0.0
2005	0.0	0.0	0.0	0.0	0.0	0.0	0.0	0.0	0.0
2006	0.0	0.0	0.0	0.0	0.0	0.0	0.0	0.0	0.0
2007	0.0	0.0	0.0	0.0	0.0	0.0	0.0	0.0	0.0
2008	0.0	0.0	0.0	0.0	0.0	0.0	0.0	0.0	0.0
2009	0.0	0.0	0.0	0.0	0.0	0.0	0.0	0.0	0.0
2010	0.0	0.0	0.0	0.0	0.0	0.0	0.0	0.0	0.0
2011	0.0	0.0	0.0	0.0	0.0	0.0	0.0	0.0	0.0
2012	0.0	0.0	0.0	0.0	0.0	0.0	0.0	0.0	0.0
2013	0.0	0.0	0.0	0.0	0.0	0.0	0.0	0.0	0.0
2014	0.0	0.0	0.0	0.0	0.0	0.0	0.0	0.0	0.0
2015	0.0	0.0	0.0	0.0	0.0	0.0	0.0	0.0	0.0
2016	0.0	0.0	0.0	0.0	0.0	0.0	0.0	0.0	0.0
2017	0.0	0.0	0.0	0.0	0.0	0.0	0.0	0.0	0.0
2018	0.0	0.0	0.0	0.0	0.0	0.0	0.0	0.0	0.0
2019	0.0	0.0	0.0	0.0	0.0	0.0	0.0	0.0	0.0
2020	0.0	0.0	0.0	0.0	0.0	0.0	0.0	0.0	0.0
2021	0.0	0.0	0.0	0.0	0.0	0.0	0.0	0.0	0.0
2022	0.0	0.0	0.0	0.0	0.0	0.0	0.0	0.0	0.0
2023	0.0	0.0	0.0	0.0	0.0	0.0	0.0	0.0	0.0

**Table 3-9  
Consolidation of Storage Accounts**

Calendar Year	Appropriator's Production Right	Appropriator's Annual Production	Additional Supplies Needed	Supplemental Water				Total Additions to or Withdrawals from Storage	Ending Storage Account Balance
				SWP Water Recharge	Recycled Water Recharge	Local Imported Water Recharge	Stormwater Recharge		
<b><i>South Mesa Water Company - Authorized Storage Account: 20,000 ac-ft</i></b>									
2003	998.0	223.2	0.0	0.0	0.0	0.0	0.0	774.8	774.8
2004	1,996.0	482.5	0.0	0.0	0.0	0.0	0.0	1,513.5	2,288.3
2005	1,996.0	663.2	0.0	0.0	0.0	0.0	0.0	1,332.8	3,621.1
2006	1,996.0	616.0	0.0	0.0	0.0	0.0	0.0	1,380.0	5,001.1
2007	665.8	665.8	0.0	0.0	0.0	0.0	0.0	-1,669.8	3,331.3
2008	470.9	470.9	0.0	0.0	0.0	0.0	0.0	-739.7	2,591.6
2009	629.2	382.2	0.0	0.0	0.0	0.0	0.0	247.0	2,838.6
2010	2,664.6	405.0	0.0	0.0	0.0	0.0	0.0	2,259.6	5,098.2
2011	419.9	419.9	0.0	0.0	0.0	0.0	0.0	-1,293.3	3,805.0
2012	2,662.9	448.5	0.0	0.0	0.0	0.0	0.0	2,214.4	6,019.4
2013	1,719.1	308.4	0.0	0.0	0.0	0.0	0.0	1,410.8	7,430.2
2014	725.3	473.7	0.0	0.0	0.0	0.0	0.0	251.6	7,681.7
2015	832.9	317.2	0.0	0.0	0.0	0.0	0.0	515.7	8,197.5
2016	833.5	352.6	0.0	0.0	0.0	0.0	0.0	480.9	8,678.3
2017	819.3	368.1	0.0	0.0	0.0	0.0	0.0	451.2	9,129.5
2018	794.4	364.9	0.0	0.0	0.0	0.0	0.0	429.5	9,559.0
2019	559.2	330.7	0.0	0.0	0.0	0.0	0.0	228.5	9,787.5
2020	575.9	229.2	0.0	0.0	0.0	0.0	0.0	346.7	10,134.3
2021	594.5	466.0	0.0	0.0	0.0	0.0	0.0	128.5	10,262.7
2022	574.7	574.7	0.0	0.0	0.0	0.0	0.0	-38.5	10,224.2
2023	559.1	277.3	0.0	0.0	0.0	0.0	0.0	281.8	10,506.0

**Table 3-9  
Consolidation of Storage Accounts**

Calendar Year	Appropriator's Production Right	Appropriator's Annual Production	Additional Supplies Needed	Supplemental Water				Total Additions to or Withdrawals from Storage	Ending Storage Account Balance
				SWP Water Recharge	Recycled Water Recharge	Local Imported Water Recharge	Stormwater Recharge		
<i>Yucaipa Valley Water District - Authorized Storage Account: 50,000 ac-ft</i>									
2003	1,162.4	1,162.4	0.0	0.0	0.0	0.0	0.0	-75.9	-75.9
2004	2,173.0	1,833.7	0.0	0.0	0.0	0.0	0.0	339.3	263.4
2005	2,173.0	1,281.3	0.0	0.0	0.0	0.0	0.0	891.7	1,155.1
2006	2,173.0	2,027.3	0.0	0.0	0.0	0.0	0.0	145.7	1,300.8
2007	2,173.0	1,682.9	0.0	0.0	0.0	0.0	0.0	490.1	1,790.9
2008	2,428.9	572.0	0.0	0.0	0.0	0.0	0.0	1,856.8	3,647.8
2009	2,862.0	504.4	0.0	0.0	0.0	0.0	0.0	2,357.6	6,005.4
2010	2,900.5	672.4	0.0	0.0	0.0	0.0	0.0	2,228.1	8,233.5
2011	2,859.2	534.1	0.0	0.0	0.0	0.0	0.0	2,325.1	10,558.6
2012	2,898.6	700.1	0.0	0.0	0.0	0.0	0.0	2,198.5	12,757.2
2013	1,871.2	1,030.8	0.0	0.0	0.0	0.0	0.0	840.4	13,597.6
2014	1,198.5	1,198.5	0.0	0.0	0.0	0.0	0.0	-409.2	13,188.4
2015	906.3	119.2	0.0	0.0	0.0	0.0	0.0	787.1	13,975.5
2016	907.0	4.6	0.0	0.0	0.0	0.0	0.0	902.4	14,877.9
2017	891.5	0.1	0.0	0.0	0.0	0.0	0.0	891.3	15,769.2
2018	864.5	191.2	0.0	0.0	0.0	0.0	0.0	673.3	16,442.5
2019	672.5	528.6	0.0	0.0	0.0	0.0	0.0	143.9	16,586.4
2020	1,407.7	1,407.7	0.0	0.0	0.0	0.0	0.0	-586.3	16,000.1
2021	1,228.5	1,228.5	0.0	0.0	0.0	0.0	0.0	-214.8	15,785.3
2022	1,061.7	686.5	0.0	0.0	0.0	0.0	0.0	375.1	16,160.4
2023	1,086.6	891.7	0.0	500.0	0.0	0.0	0.0	694.9	16,855.3

**Table 3-9  
Consolidation of Storage Accounts**

Calendar Year	Appropriator's Production Right	Appropriator's Annual Production	Additional Supplies Needed	Supplemental Water				Total Additions to or Withdrawals from Storage	Ending Storage Account Balance
				SWP Water Recharge	Recycled Water Recharge	Local Imported Water Recharge	Stormwater Recharge		
<b><i>Morongo Band of Mission Indians - Authorized Storage Account: 20,000 ac-ft</i></b>									
2013	0.0	0.0	0.0	0.0	0.0	0.0	0.0	0.0	0.0
2014	0.0	0.0	0.0	0.0	0.0	0.0	0.0	0.0	0.0
2015	0.0	0.0	0.0	0.0	0.0	0.0	0.0	0.0	0.0
2016	0.0	0.0	0.0	0.0	0.0	0.0	0.0	0.0	0.0
2017	0.0	0.0	0.0	0.0	0.0	0.0	0.0	0.0	0.0
2018	0.0	0.0	0.0	0.0	0.0	0.0	0.0	0.0	0.0
2019	0.0	0.0	0.0	0.0	0.0	0.0	0.0	0.0	0.0
2020	0.0	0.0	0.0	0.0	0.0	0.0	0.0	0.0	0.0
2021	0.0	0.0	0.0	0.0	0.0	0.0	0.0	0.0	0.0
2022	0.0	0.0	0.0	0.0	0.0	0.0	0.0	0.0	0.0
2023	0.0	0.0	0.0	0.0	0.0	0.0	0.0	0.0	0.0
<b><i>San Gorgonio Pass Water Agency - Authorized Storage Account: 10,000 ac-ft</i></b>									
2018	0.0	0.0	0.0	0.0	0.0	0.0	0.0	0.0	0.0
2019	0.0	0.0	0.0	257.8	0.0	0.0	0.0	257.8	257.8
2020	0.0	0.0	0.0	214.0	0.0	0.0	0.0	214.0	471.8
2021	0.0	0.0	0.0	36.0	0.0	0.0	0.0	-471.8	0.0
2022	0.0	0.0	0.0	0.6	0.0	0.0	0.0	0.6	0.6
2023	0.0	0.0	0.0	893.0	0.0	0.0	0.0	893.0	893.6

**Table 3-9  
Consolidation of Storage Accounts**

Calendar Year	Appropriator's Production Right	Appropriator's Annual Production	Additional Supplies Needed	Supplemental Water				Total Additions to or Withdrawals from Storage	Ending Storage Account Balance
				SWP Water Recharge	Recycled Water Recharge	Local Imported Water Recharge	Stormwater Recharge		
<b>Totals - All Agencies with Storage Accounts</b>									
2003	8,186.8	7,071.7	0.0	0.0	0.0	0.0	0.0	928.3	928.3
2004	16,071.9	12,587.4	0.0	0.0	0.0	0.0	0.0	3,412.6	4,340.9
2005	16,223.6	10,778.6	0.0	0.0	0.0	0.0	0.0	5,221.4	9,562.3
2006	18,252.1	13,524.9	0.0	3,501.0	0.0	0.0	0.0	5,976.1	15,538.3
2007	20,751.1	16,504.6	0.0	4,501.0	0.0	0.0	0.0	3,996.4	19,534.8
2008	19,231.4	14,687.0	0.0	3,933.0	0.0	0.0	0.0	7,130.2	26,665.0
2009	21,073.7	13,115.6	0.0	5,482.4	0.0	0.0	0.0	13,440.6	40,105.6
2010	21,699.2	11,642.3	0.0	7,065.0	0.0	0.0	0.0	16,780.0	56,885.6
2011	22,346.5	11,727.0	0.0	8,779.0	0.0	0.0	0.0	18,105.3	74,990.9
2012	22,432.0	12,348.9	0.0	8,983.0	0.0	0.0	0.0	17,977.6	92,968.6
2013	19,018.4	14,537.2	0.0	8,603.0	0.0	0.0	0.0	7,844.2	100,812.7
2014	15,314.3	15,062.8	0.0	5,013.0	0.0	0.0	0.0	-4,237.9	96,574.8
2015	12,809.4	11,087.4	0.0	3,467.0	0.0	0.0	0.0	-946.9	95,628.0
2016	13,999.3	11,989.7	0.0	10,796.0	0.0	0.0	0.0	5,484.9	101,112.9
2017	15,424.7	13,462.4	0.0	14,940.0	0.0	0.0	0.0	8,042.2	109,155.0
2018	16,128.9	15,026.1	0.0	12,621.0	0.0	0.0	0.0	3,960.4	113,115.4
2019	14,493.9	14,121.5	0.0	14,152.8	0.0	0.0	0.0	4,576.3	117,691.8
2020	17,071.4	16,724.7	0.0	11,469.0	0.0	0.0	0.0	-446.5	117,245.2
2021	18,100.6	17,972.1	0.0	2,504.0	0.0	0.0	0.0	-10,337.7	106,907.5
2022	17,720.4	17,345.3	0.0	1,811.6	0.0	0.0	0.0	-10,759.3	96,148.2
2023	13,266.8	12,709.1	0.0	20,393.0	0.0	0.0	0.0	12,641.7	108,789.9

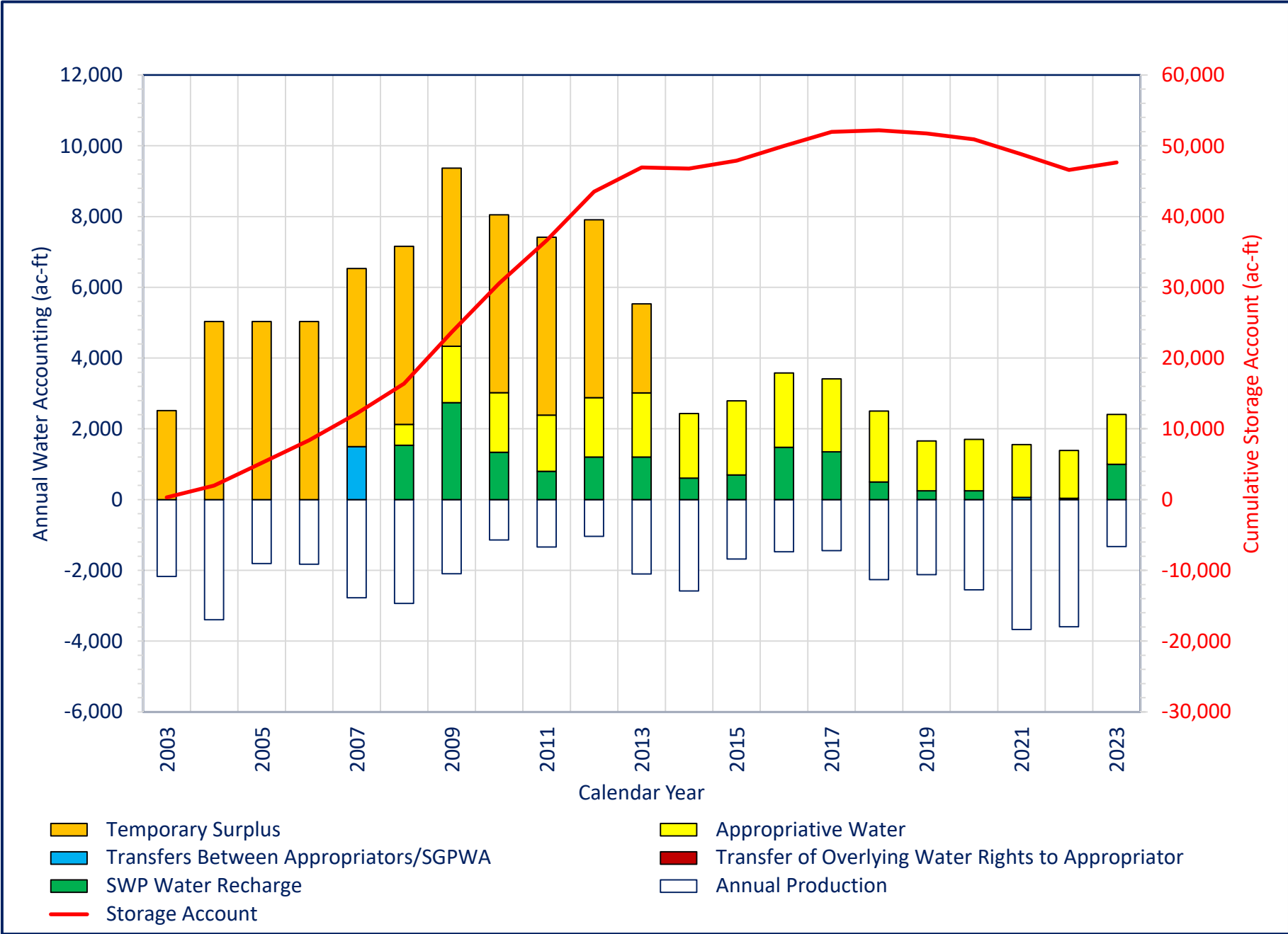


Figure 3-5

City of Banning - Supply Sources and Storage Account (2003-23)

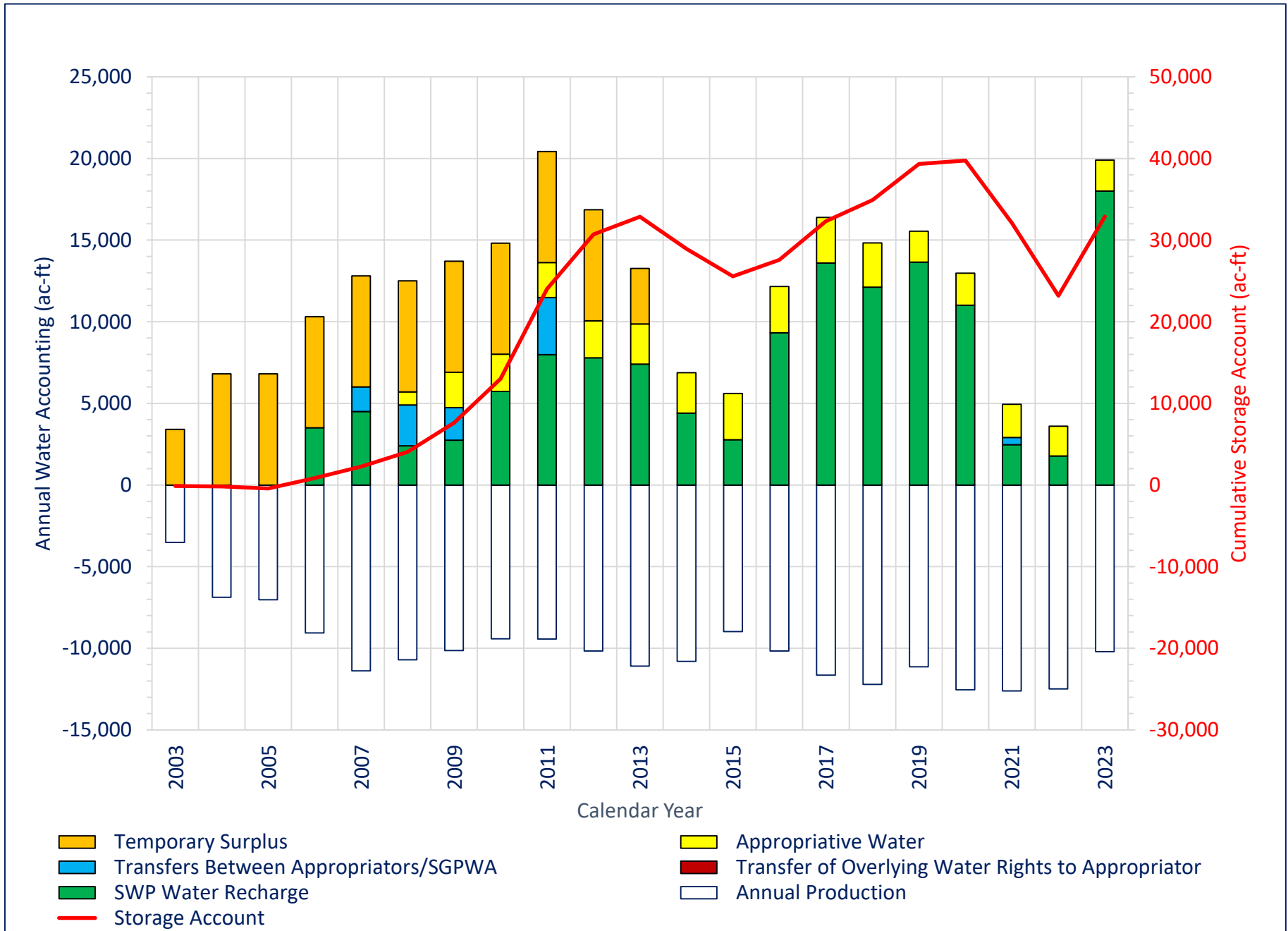


Figure 3-6

BCVWD - Supply Sources and Storage Account (2003-23)

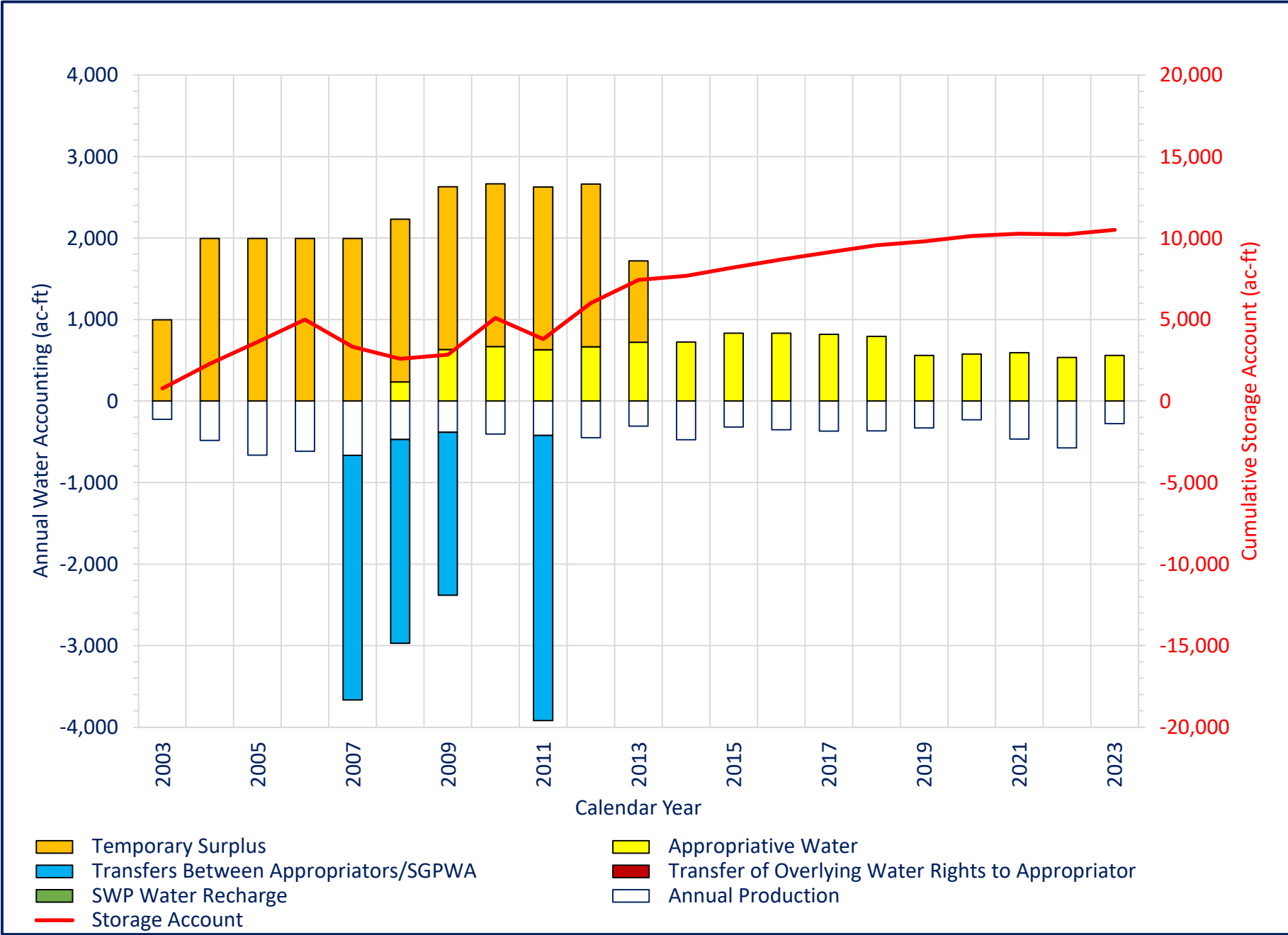


Figure 3-7

SMWC - Supply Sources and Storage Account (2003-23)

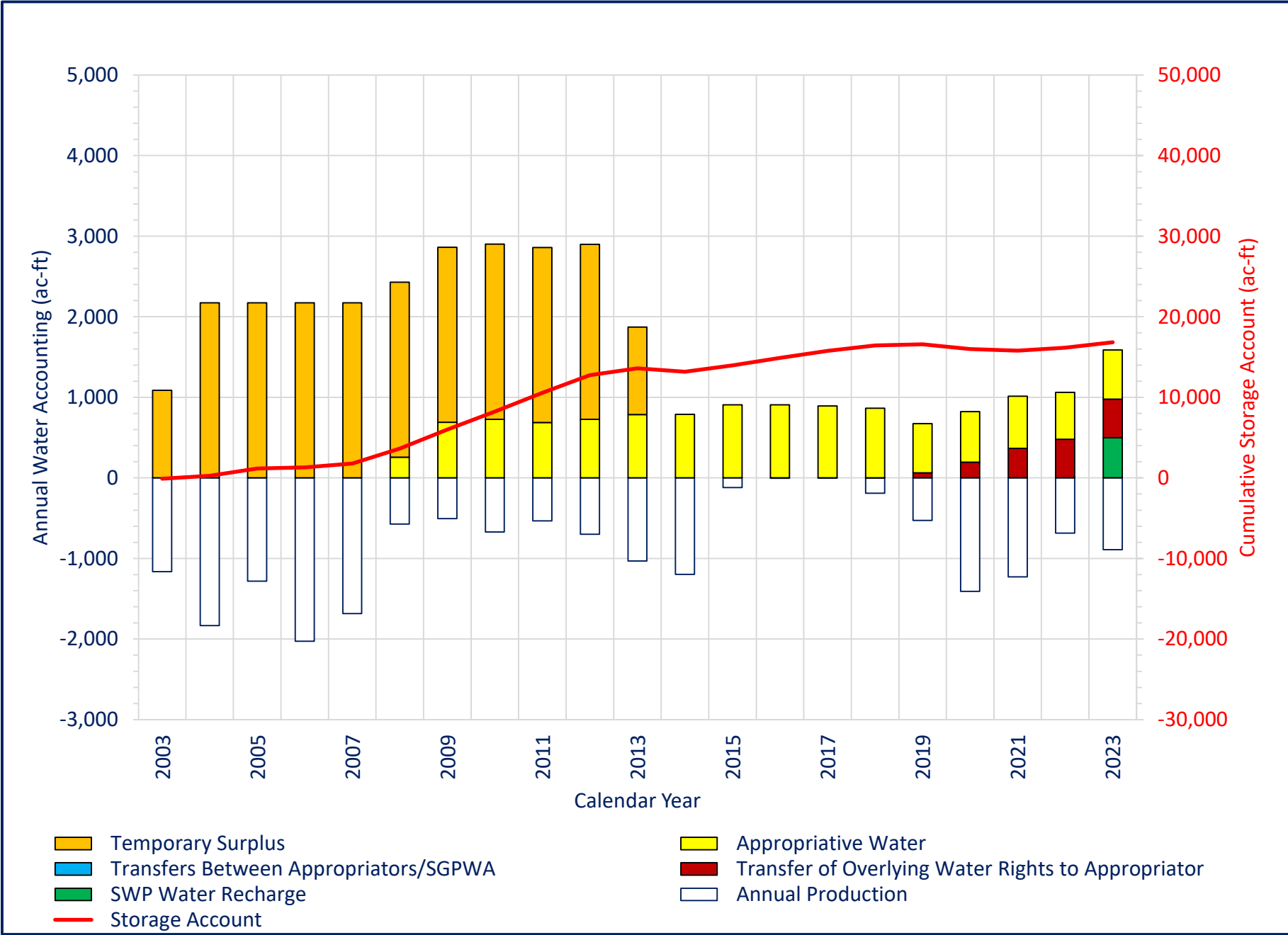


Figure 3-8

YVWD - Supply Sources and Storage Account (2003-23)

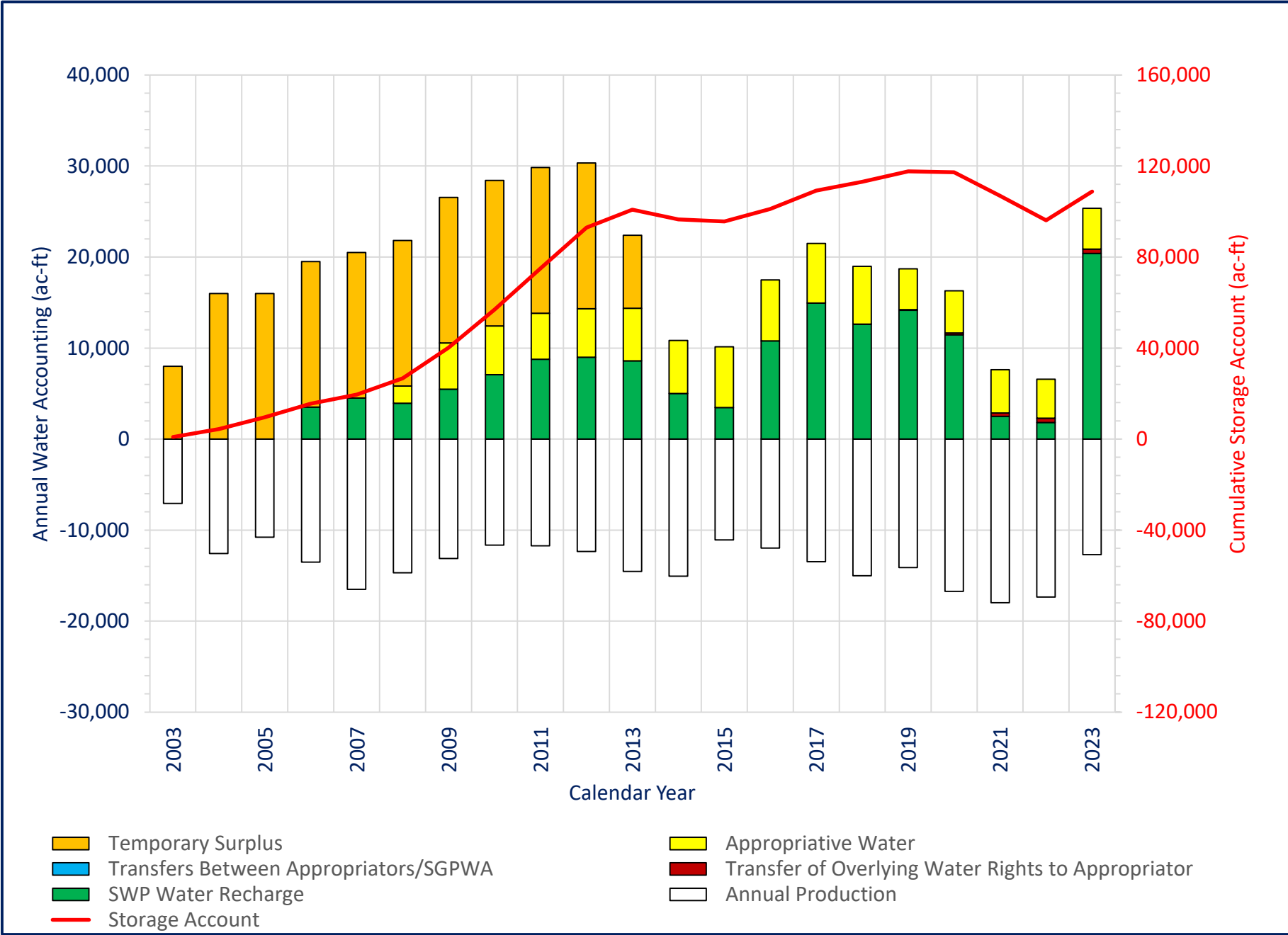
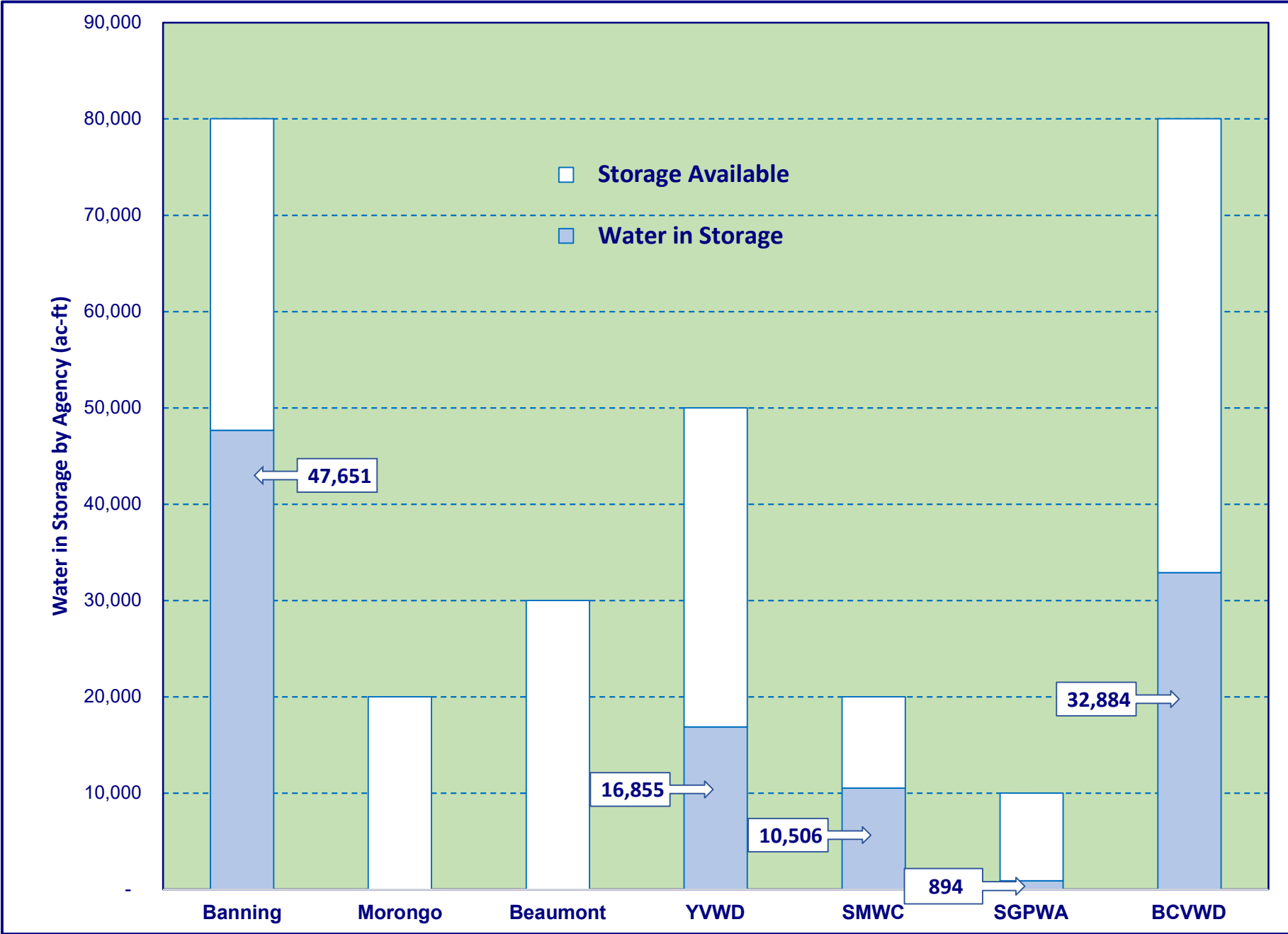


Figure 3-9

Beaumont Basin - Supply Sources and Storage Account (2003-23)

**Attachment 3**



**Figure 3-10  
Groundwater Storage by Agency/User as of 2023**

# Attachment 4



Figure 3-11

Accumulation of Storage by Appropriator for the 2014-2023 10-Yr Period

**BEAUMONT BASIN WATERMASTER**

MEMORANDUM NO. 24-08

**Date:** March 6, 2024  
**From:** Steven Stuart, Dudek  
**Subject:** Beaumont Basin Management Areas  
**Recommendation:** For Information and Discussion

---

At the February 7, 2024, Beaumont Basin Watermaster regular meeting, the Watermaster Committee discussed the possibility of establishing management areas to enhance the understanding and management of groundwater resources in the Beaumont Basin, particularly due to the influence of the Beaumont Plain Fault Zone on groundwater flow.

At this meeting, the Watermaster Committee will continue the discussion on the possibility of establishing management areas, including how the boundaries of the management areas may be defined, the advantages/disadvantages of calculating an annual water budget for each management area, and the potential to better understand how and when undesirable conditions may occur in each management area. The overall purpose of the discussion is to determine if there is added benefit in incorporating management areas to facilitate the management of the groundwater resource in the Beaumont Basin.

**DUDEK**



## Proposed Management Areas

Beaumont Basin Watermaster Special Meeting

PRESENTATION BY STEVEN STUART, PE

MARCH 6, 2024

Dudek © All Rights Reserved

1

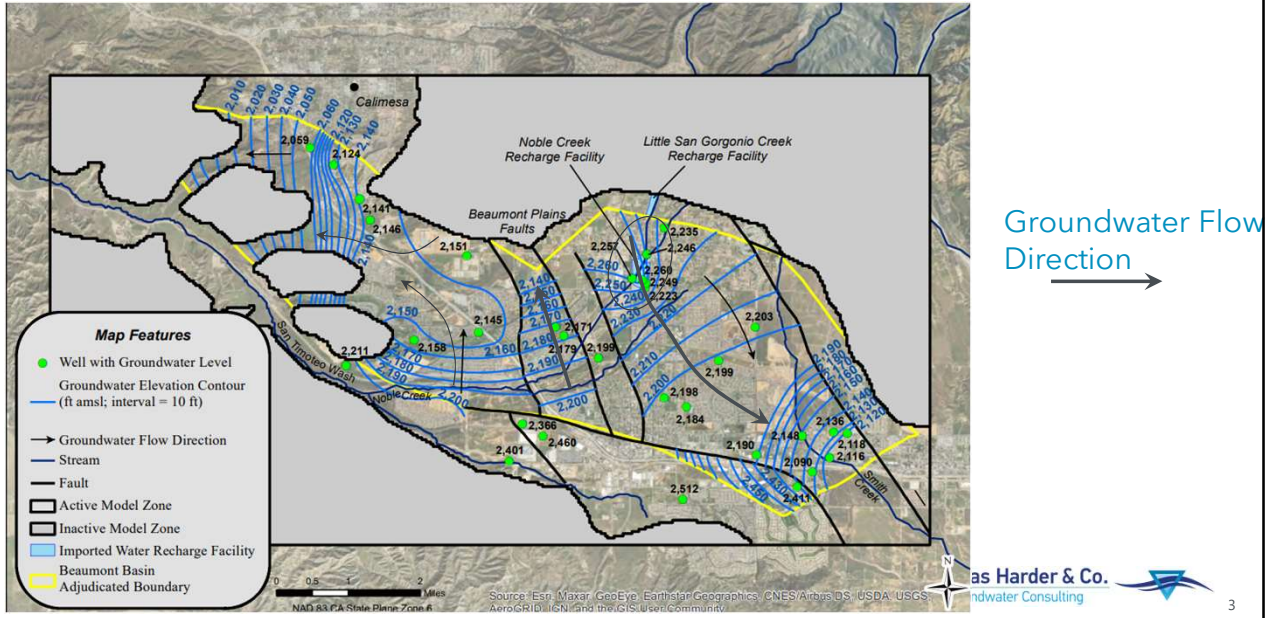
## Proposed Management Areas

- Purpose
  - Recognize physical constraints and influences on groundwater flow in Basin
  - Recognize jurisdictional boundaries
  - Introduce and/or enhance groundwater management practices
- Implementation
  - Quantify annual water budgets
  - Identify Undesirable Results/Conditions
  - Prioritize projects
  - No imposed restrictions to groundwater usage - managed per Judgement

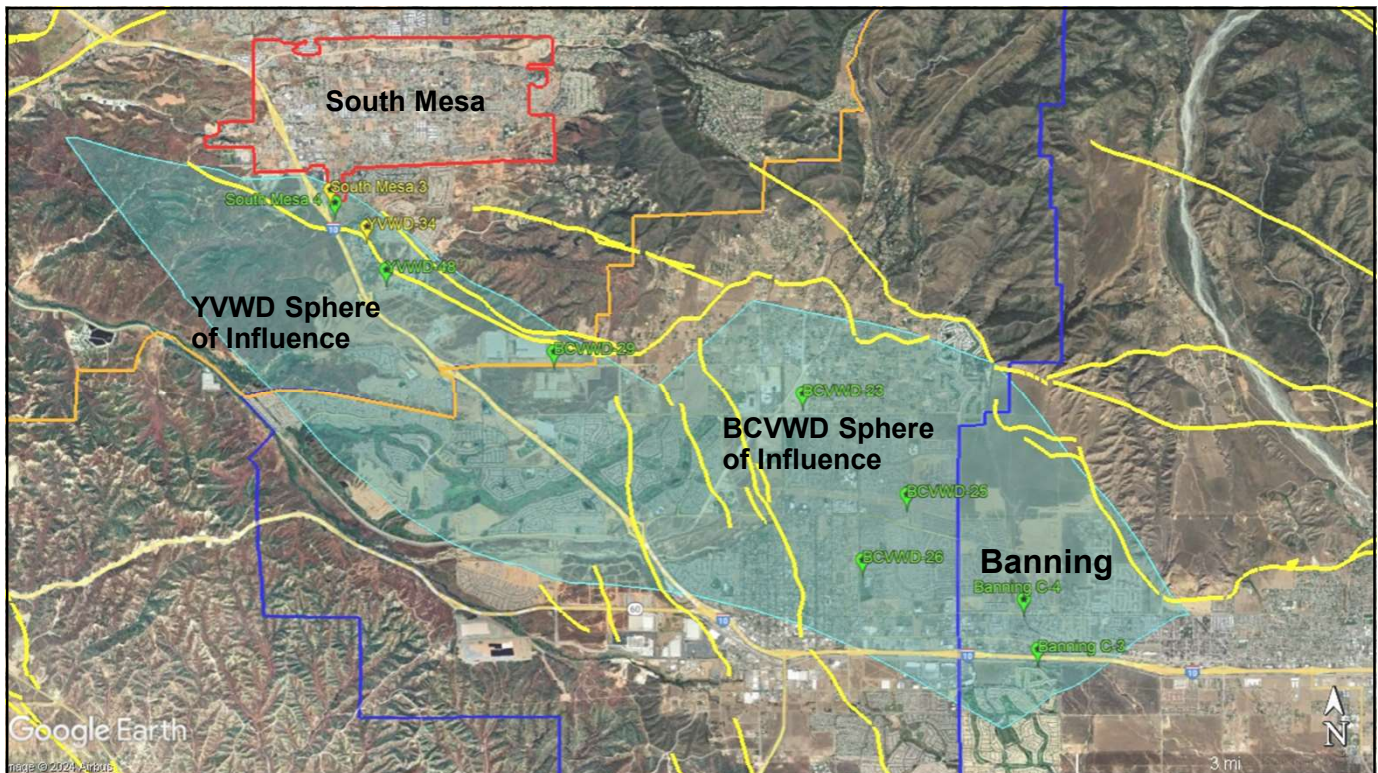
2

2

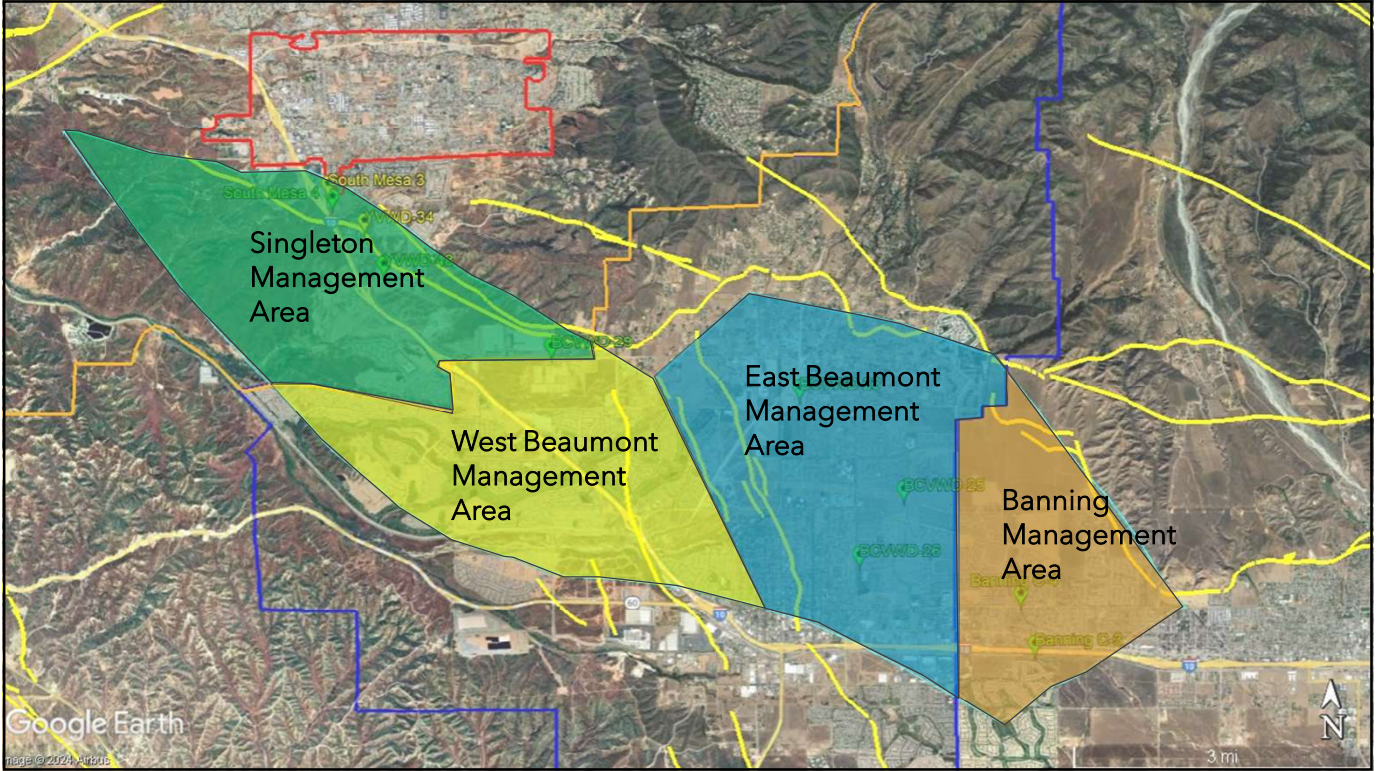
# Groundwater Flow from the Areas of Principal Recharge Doesn't Reach the West Part of the Basin



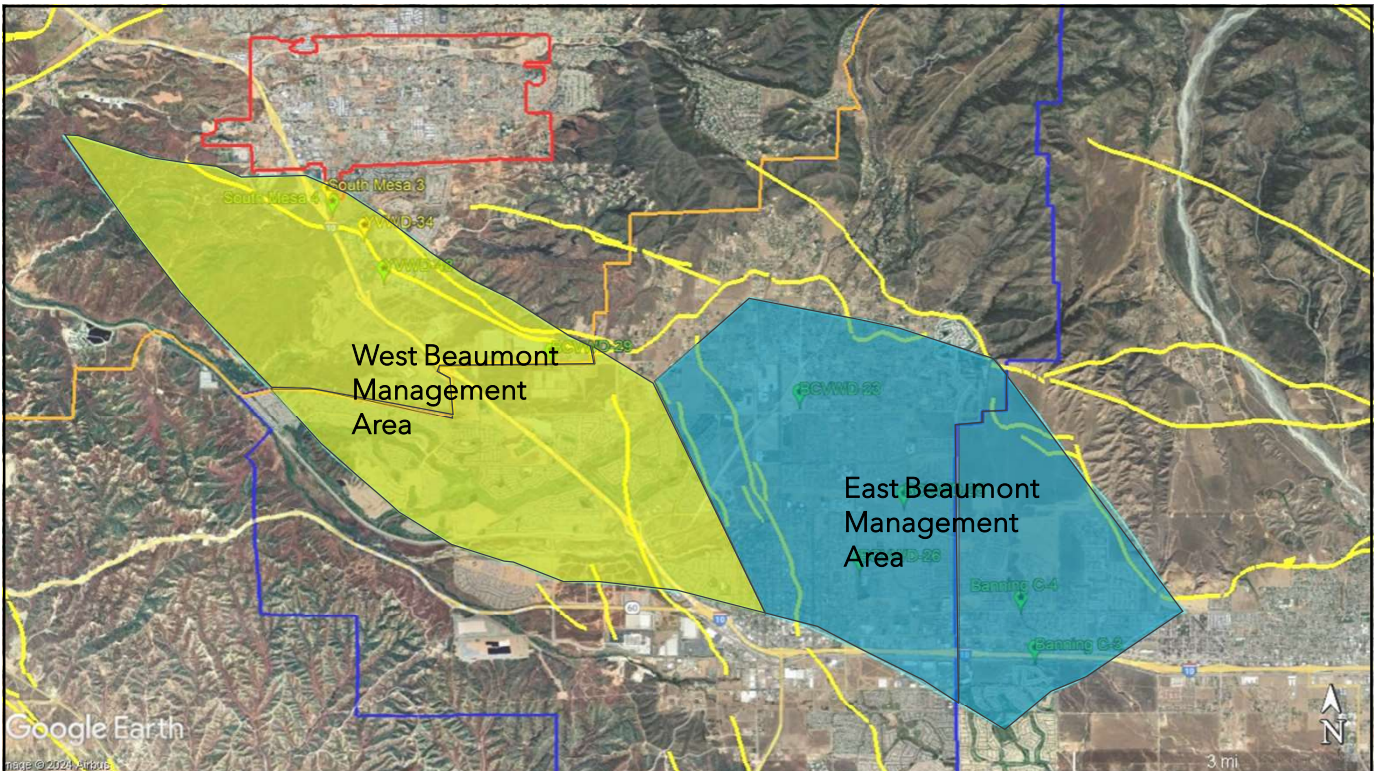
3



4



5



6