



Yucaipa Valley Water District

Notice and Agenda of a Board Workshop Tuesday, January 11, 2011 at 4:00 p.m.

MEETING LOCATION: District Administration Building
12770 Second Street, Yucaipa

MEMBERS OF THE BOARD: Director Ian Cuthbertson, Division 1
Director Bruce Granlund, Division 2
Director Jay Bogh, Division 3
Director Lonni Granlund, Division 4
Director Hank Wochholz, Division 5

- I. Call to Order
 - II. Public Comments: At this time, members of the public may address the Board of Directors on matters within its jurisdiction; however, no action or significant discussion may take place on any item not on the agenda. To provide comments on specific agenda items, please complete a speaker's request form and provide that form to the Board Secretary prior to the commencement of the Board meeting.
 - III. Staff Comments
 - IV. Workshop Presentations
 - A. Overview of the Proposed Expansion of the Crafton Hills Reservoir [[Workshop Memorandum No. 11-001 - Page 3 of 72](#)]
 - V. Capital Improvement Projects
 - A. Status Report on the Construction of the Yucaipa Valley Regional Brineline [[Workshop Memorandum No. 11-002 - Page 5 of 72](#)]
 - B. Status Report on the Construction of 30" and 8" Pipelines in Second Street, Yucaipa [[Workshop Memorandum No. 11-003 - Page 8 of 72](#)]
 - VI. Development Related Issues
 - A. Overview of a Development Agreement for the Cherry Valley Plaza Development [[Workshop Memorandum No. 11-004 - Page 12 of 72](#)]
 - B. Overview of Residential Fire Sprinkler Standard Specifications [[Workshop Memorandum No. 11-005 - Page 13 of 72](#)]
-

Any person with a disability who requires accommodation in order to participate in this meeting should telephone Chelsie Fogus at (909) 797-5118, at least 48 hours prior to the meeting in order to make a request for a disability-related modification or accommodation.

Materials related to an item on this agenda submitted to the Board of Directors after distribution of the workshop packet are available for public inspection during normal business hours at the District office located at 12770 Second Street, Yucaipa. Meeting material may also be available on the District's website at www.yvwd.dst.ca.us

VII. Administrative Issues

- A. Discussion Regarding the Unaudited Financial Report for December 2010
[\[Workshop Memorandum No. 11-006 - Page 22 of 72\]](#)
- B. Discussion Regarding Pretreatment Discharge Permit No. CP-003-03 for Hoover Egg Company, Yucaipa
[\[Workshop Memorandum No. 11-007 - Page 50 of 72\]](#)
- C. Discussion Regarding the Investment Policy of the Yucaipa Valley Water District
[\[Workshop Memorandum No. 11-008 - Page 51 of 72\]](#)
- D. Discussion Regarding the Appointment of Individuals as Representatives in Small Claims Court
[\[Workshop Memorandum No. 11-009 - Page 61 of 72\]](#)
- E. Discussion Regarding a Nonsubstantive Change to the Conflict of Interest Code of the Yucaipa Valley Water District
[\[Workshop Memorandum No. 11-010 - Page 63 of 72\]](#)

VIII. Director Comments

IX. Adjournment



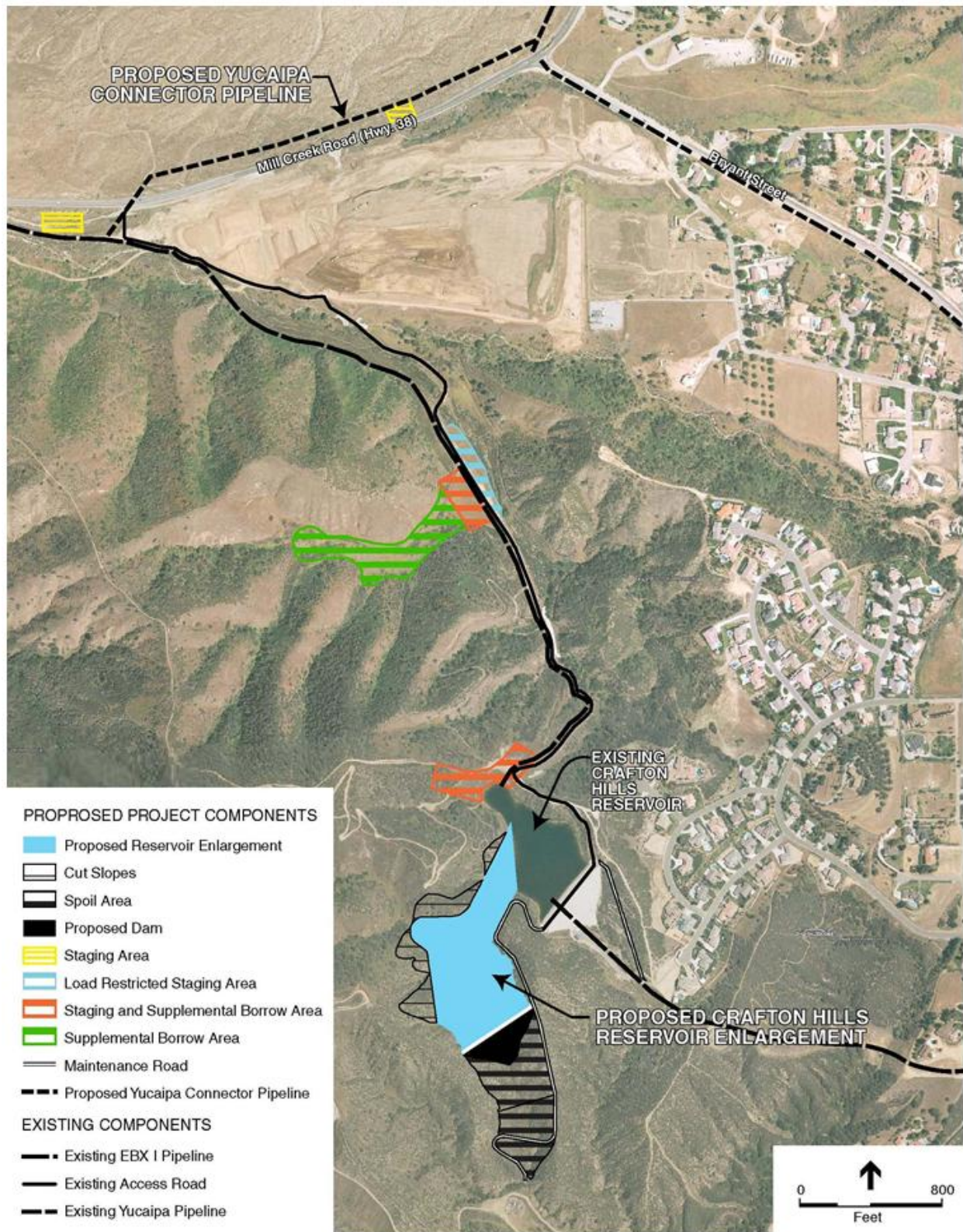
Date: January 11, 2011

Subject: Overview of the Proposed Expansion of the Crafton Hills Reservoir

The Department of Water Resources in conjunction with the San Bernardino Valley Municipal Water District and the San Geronio Pass Water Agency are preparing to initiate the East Branch Extension (EBX) - Phase I Improvements project which will increase the operating storage capacity of the existing Crafton Hills Reservoir from 85 acre-feet to about 225 acre-feet. The additional storage will enhance the operational flexibility and reliability, and reduce on-peak energy demands.

The project will also construct a half-mile long, 48-inch diameter pipeline connecting the existing EBX Pipeline with the existing Yucaipa Pipeline. The connector pipeline will bypass flows around the reservoir to allow continued deliveries of water in while the reservoir is being enlarged. The connector pipeline will also be used during future outages of the reservoir.

The San Bernardino Valley Municipal Water District has been extremely responsive in listening to possible water quality concerns associated with the expanded water storage reservoir. Mr. Doug Headrick, General Manager of the San Bernardino Valley Municipal Water District will be providing a brief overview of solutions to the potential water quality issues.



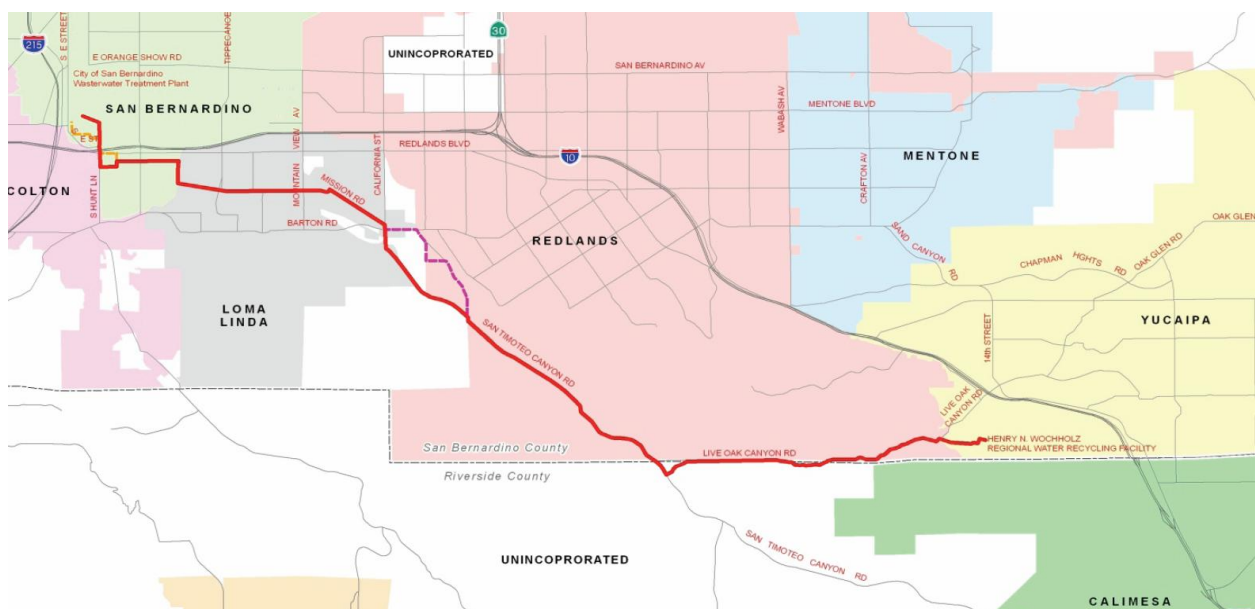
Date: January 11, 2011

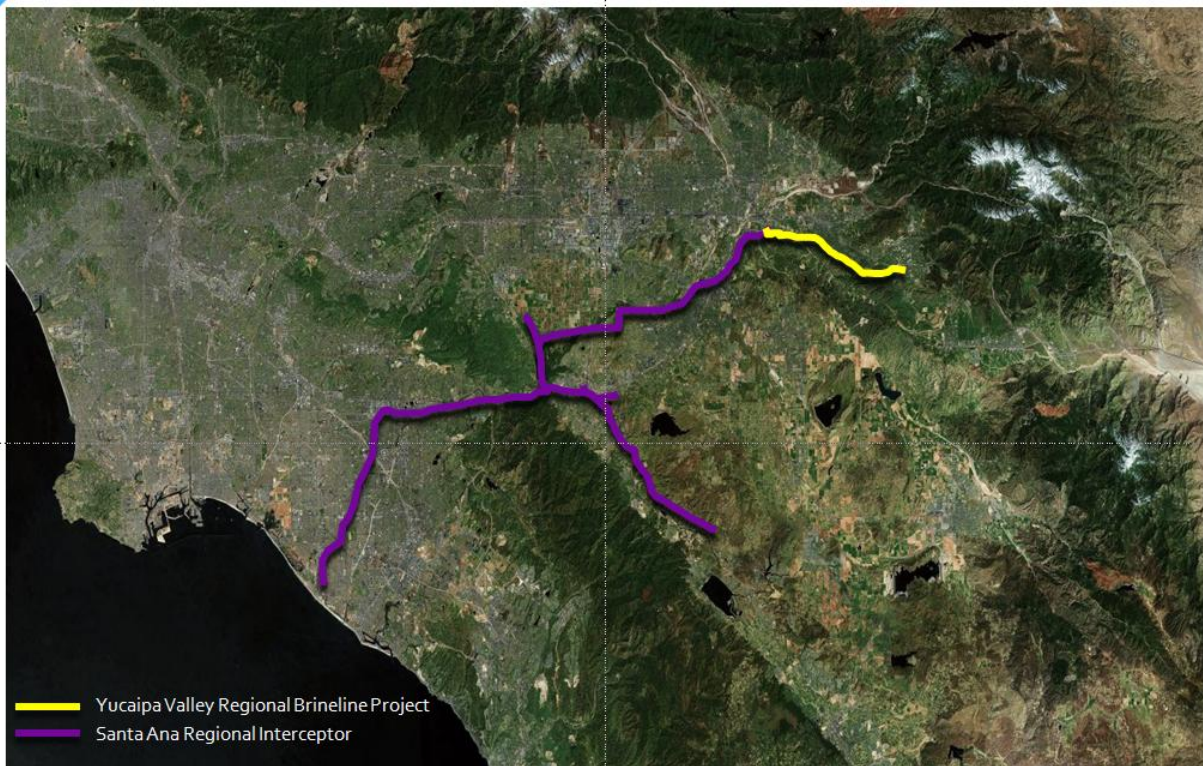
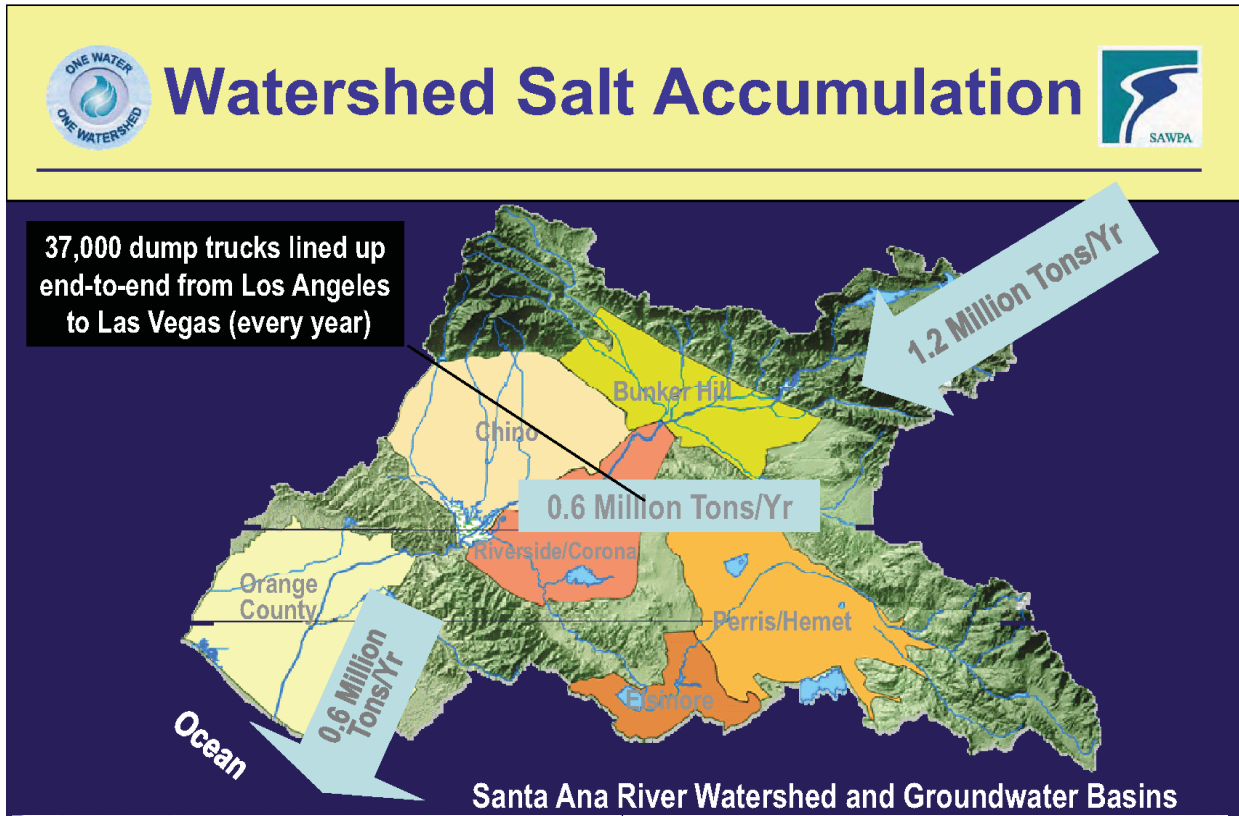
Subject: Status Report on the Construction of the Yucaipa Valley Regional Brinline

Yucaipa Valley Water District is in the process of constructing the Yucaipa Valley Regional Brinline in order to produce recycled water that complies with groundwater basin objectives as established by the Regional Water Quality Control Board. In order to comply with these limits, the District is required to add a reverse osmosis process to the wastewater treatment plant. This will enable the District to remove salts and minerals from depositing in to the groundwater basin. The proposed reverse osmosis system will produce salt water, referred to as “brine”, that must be sent to the Pacific Ocean so it does not impact any fresh water supplies downstream of the Yucaipa Valley.

The Yucaipa Valley Regional Brinline Project consists of a 15-mile pipeline through which the District can safely and effectively dispose of the salt water produced. This pipeline will commence at the Wochholz Regional Water Recycling Facility and terminate at an existing brinline extending another 73 miles traversing San Bernardino, Riverside and Orange counties to Orange County Sanitation District Wastewater Treatment Plant No. 2 in Huntington Beach, where the salt water is treated with domestic sewage and then sent to the ocean or reclaimed by Orange County Water District.

During this agenda item, the District staff will be providing an update of the construction status of the Yucaipa Valley Regional Brinline Project.





Yucaipa Valley Regional Water Supply Renewal Project





Date: January 11, 2011

Subject: Status Report on the Construction of 30” and 8” Pipelines in Second Street, Yucaipa

The District staff has received bids for the construction of potable water pipelines to be installed in Second Street as shown on the attached map.

The proposed project involves the following two elements:

- Construction of about 2,000 feet of an 8” diameter ductile iron pipeline on Second Street from Persimmon Avenue to a point south of Cedar Avenue (Bid Schedule I); and
- Construction of about 2,600 feet of a 30” diameter ductile iron conveyance pipeline on Second Street from Persimmon Avenue to Acacia Avenue.

The current construction period will require completion within 125 calendar days following the board award of the construction contract. Based on an anticipated award date of February 2, 2011, the project would be completed by the end of June 2011.





INCORPORATED • ENGINEERING CONSULTANTS

3602 University Ave • Riverside, CA 92501 • Tel 951-684-6900 • Fax 951-684-6986

December 30, 2010

818-36.5 F/C

Brent Anton
 Yucaipa Valley Water District
 12770 Second Street
 Yucaipa, CA 92399

Subject: 30" Potable Water Conveyance Pipeline - Phase I and 8" Second St. Pipeline
 Bid Results and Award Recommendation

Dear Mr. Anton:

On December 16, 2010, the Yucaipa Valley Water District (District) received sixteen bids for subject project; the results are as follows (a breakdown by bid item is shown in the attached Bid Results table):

<u>Contractor</u>	<u>Bid Amount</u>
Pro-Craft Construction, Inc.	\$949,742.00
TBU, Inc.	\$992,784.00
C.P. Construction Company, Inc.	\$1,030,000.00
E.J. Meyer Company	\$1,061,110.00
Mamco, Inc.	\$1,069,811.11
Utah Pacific Construction Company	\$1,197,382.00
Garcia Juarez Construction, Inc.	\$1,231,570.00
Merlin Johnson Construction	\$1,265,062.00
Kana Pipeline, Inc.	\$1,295,400.00
Genesis Construction	\$1,297,242.00
Weka, Inc.	\$1,366,859.00
El-Co Contractors, Inc.	\$1,481,173.00
Mike Bubalo Construction, Inc.	\$1,486,480.00
Vido Artukovich & Son, Inc.	\$1,689,800.00
Pyramid Building & Engineering, Inc.	\$1,934,200.58
Downing Construction, Inc.	\$2,217,329.00

The low bidder is Pro-Craft Construction, Inc. in the amount of \$949,742.00. We have reviewed Pro-Craft Construction, Inc.'s bid documents and all are in order.

Since construction of the 30" Potable Water Conveyance Pipeline - Phase I and 8" Second St. Pipeline is necessary to improve the supply and fire protection in Second Street, and since Pro-Craft Construction, Inc. is an experienced, capable contractor with a current Class A Contractor's License (No. 467234), we recommend award of subject work to Pro-Craft Construction, Inc. in the amount of \$949,742.00.



Brent Anton
December 30, 2010
Page 2

If you have any questions, please call.

Sincerely,

KRIEGER & STEWART

A handwritten signature in blue ink that reads "Patrick M. Watson". The signature is stylized and cursive.

Patrick M. Watson

PMW/lgm
818-36-RECAWARD

Attachment: Bid Results

Date: January 11, 2011

Subject: Overview of a Development Agreement for the Cherry Valley Plaza Development

The District staff has been working with the current property owner and a potential buyer of a 16 acre commercial center located in the City of Calimesa. The proposed development would have been logically served by the water and sewer facilities installed by the SunCal development. However since the residential construction has stopped, the District staff is attempting to create a mechanism to facilitate the fair share contribution of all parties for the construction of the R-12.4 reservoir that will ultimately provide fire protection and service to the proposed commercial development and other areas of this southernmost water pressure zone.

At the workshop, the District staff will be providing an overview of the development agreement related to this project.





Date: January 11, 2011

Subject: Overview of Residential Fire Sprinkler Standard Specifications

On January 12, 2010 the California State Fire Marshall, through the State Building Standards Commission, adopted provisions for the installation of residential fire sprinkler systems. All new residential construction permitted after January 1, 2011 will be required to install a fire sprinkler system.

The District has developed a new standard for residential water meter installations that incorporates this new requirement together with our dual plumbed objectives for new homes.

The attached staff report provides additional information about the proposed standard specification.



Yucaipa Valley Water District

Director Memorandum 11-0xx

Date: January 19, 2011 **Job:** N/A

Prepared By: Brent Anton, Engineering Project Integrator **G/L:** N/A
Jeremy Costello, Engineering Technician I

Subject: Adoption of Resolution 02-2011 for the Yucaipa Valley Water District Standard Specification for Dual Plumbed Residential Properties Requiring 1-inch Fire Sprinkler Service.

Recommendation: That the Board approves Resolution No. 02-2011 for the Yucaipa Valley Water District Standard Specification for Dual Plumbed Residential Properties Requiring 1-inch Fire Sprinkler Service.

On January 12, 2010 the California State Fire Marshall, through the State Building Standards Commission, adopted provisions for the installation of residential fire sprinkler systems. All new residential construction permitted after January 1, 2011 will be required to install a fire sprinkler system.

The District has developed a new standard for residential water meter installations that incorporates this new requirement together with our dual plumbed objectives for new homes. This new fire service standard will require a larger water meter to provide sufficient flow for the fire sprinklers, along with service lines and a backflow prevention device to protect the potable water service.

Developers and home builders will experience additional costs for the purchase and installation of the larger water meter and customers will have a slightly higher monthly fixed fee associated with the depreciation and replacement of the larger water meter. Currently our customers pay \$0.329/day (\$9.87/month) for a ¾-inch water meter as compared to \$0.549/day (\$16.47/month) for a 1-inch water meter. The commodity cost of water delivered to the home is the same regardless of the meter size. The schedule of charges already exists in Resolution No. 37-2005 which was adopted in 2005.

In the near future, the District staff will be proposing to change our methodology for facility capacity charges related to new development. Specifically, the District staff will be proposing to base our development impact fees on an Equivalent Dwelling Unit. This will allow new homes to benefit from a larger water meter to facilitate the operation of their fire sprinklers, but will not result in extra development fees being charged since there will not be any additional demand on our water facilities beyond the typical single family residential home, or one Equivalent Dwelling Unit.

The District staff has also reviewed an alignment of the meter infrastructure to be parallel to the curb instead of perpendicular as shown on the attached standard drawings. Therefore the provision for installing the meter boxes has been included as a note within the drawings should the parallel construction be necessary.

RESOLUTION NO. 02-2011

**A RESOLUTION OF THE YUCAIPA VALLEY WATER DISTRICT
ESTABLISHING A STANDARD SPECIFICATION FOR FIRE SPRINKLER SERVICE**

WHEREAS, On January 12, 2010 the California State Fire Marshall, through the State Building Standards Commission, adopted provisions requiring all new residential construction permitted after January 1, 2011 to install a fire sprinkler system.

WHEREAS, the Yucaipa Valley Water District has developed new standards for residential water meter installations that incorporate this new requirement together with our dual plumbed objectives for new homes.

WHEREAS, these new fire service standards will require a larger water meter to provide sufficient flow for the fire sprinklers, along with service lines and a backflow prevention device to protect the potable water service where necessary.

NOW, THEREFORE, the Board of Directors of the Yucaipa Valley Water District does hereby resolve to adopt the attached standard specifications in compliance with the new building requirements:

- Yucaipa Valley Water District – Standard Specification for the Design and Processing, Furnishing of Materials, and Construction of Water Facilities;
- W-4 - Dual Plumbed Residential Properties Requiring 1" Fire Sprinkler Service
- W-5 - Residential Properties Requiring 1" Fire Sprinkler Service

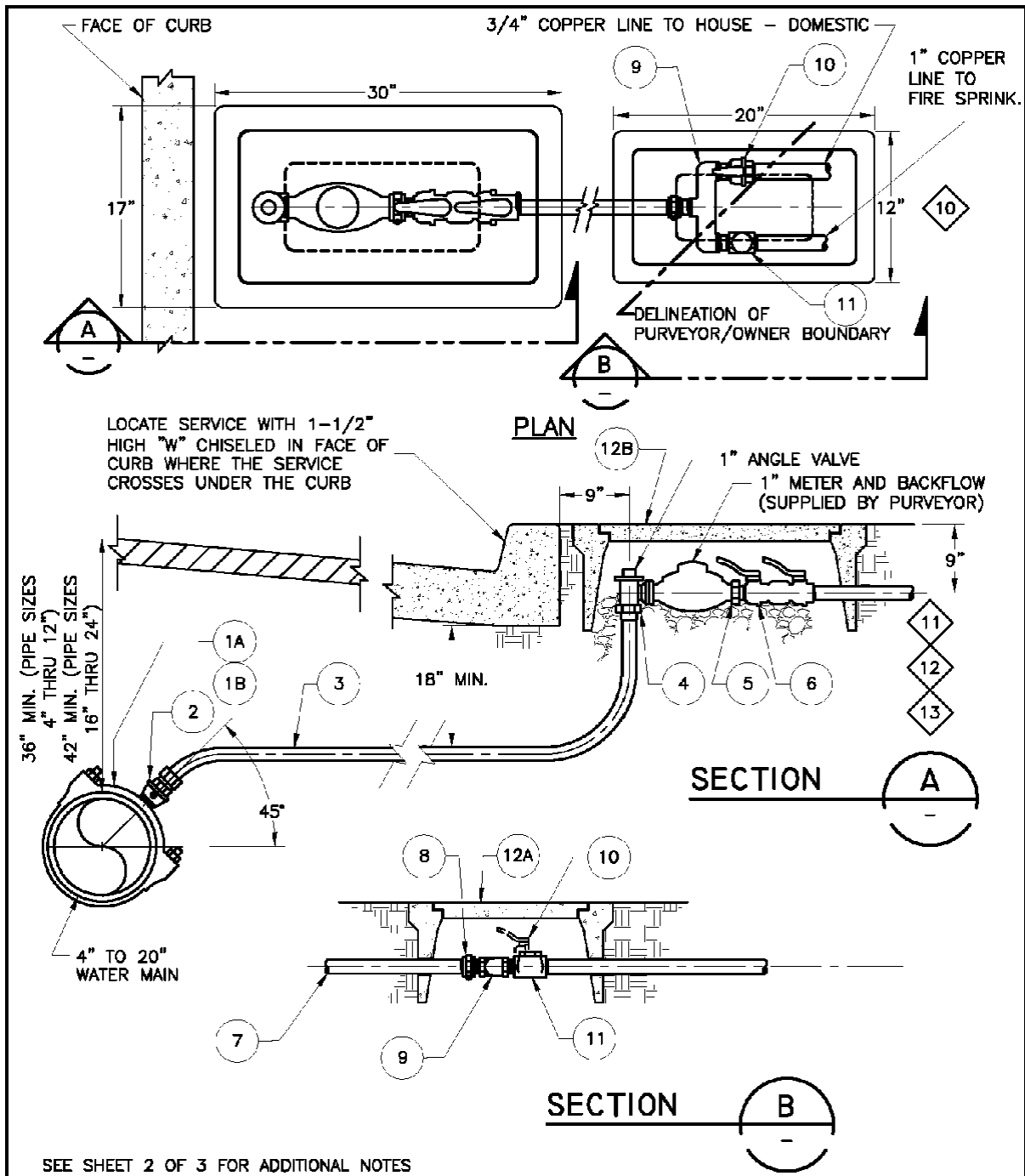
PASSED AND ADOPTED this 19th day of January 2011.

YUCAIPA VALLEY WATER DISTRICT


Jay Bogh, President Board of Directors

ATTEST:

Joseph B. Zoba, General Manager



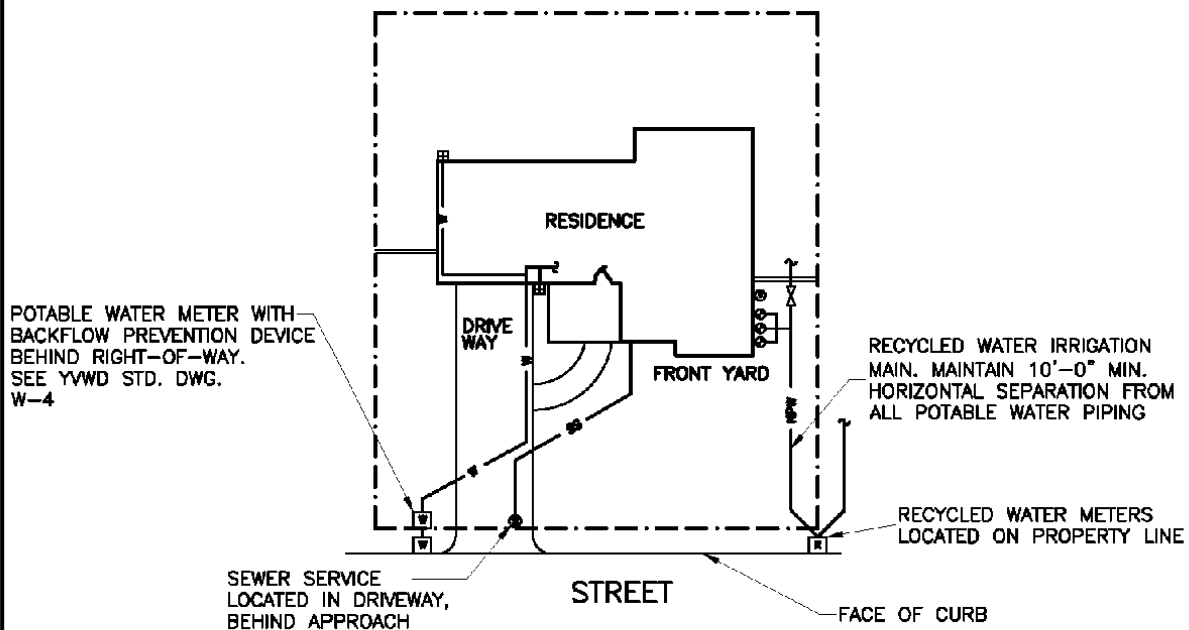
**DUAL PLUMBED RESIDENTIAL PROPERTIES REQUIRING
1" FIRE SPRINKLER SERVICE**

2011	 <p style="font-size: 1.2em;">Yucaipa Valley Water District</p>	<p style="font-size: 0.8em;">APPROVED BY PURVEYOR</p> <hr style="width: 80%; margin: 0 auto;"/> <p style="font-size: 0.8em;">DATE</p>	W-4
			SHEET 1 OF 3

NOTES:

1. SERVICE SADDLE SHALL NOT BE INSTALLED WITHIN 12" OF VALVE, COUPLING, JOINT OR FITTING.
2. BLUE POLY-SLEEVE SHALL BE SECURED AT THE CORP. AND THE ANGLE VALVE WITH 10 MIL. TAPE.
3. SET TOP OF METER BOX FLUSH WITH DRIVEWAY, SIDEWALK OR CURB, AS SHOWN.
4. THE CORPORATION STOP TAP SHALL BE MADE AT A 45° DEGREE ANGLE FROM THE TOP OF THE PIPE.
5. THE WATER SERVICE SHALL EXTEND PERPENDICULAR TO THE CENTERLINE OF THE STREET FROM THE WATER MAIN TO THE METER STOP.
6. ALL CONNECTIONS TO COPPER TUBING SHALL BE COMPRESSION FITTINGS.
7. NON-POTABLE SERVICES WILL BE LOCATED ON THE PROPERTY LINES IN PAIRS. MINIMUM SEPARATION FROM POTABLE TO NON-POTABLE SERVICES IS (10').
8. METERS AND BACKFLOW BRANCH ASSEMBLY TO BE CENTERED IN METER BOXES TO ALLOW FOR ACCESS, TESTING, AND MAINTENANCE.

- 10 IN DUAL PLUMBED COMMUNITIES ALL ON SITE POTABLE PIPING IS TO BE COPPER TUBING TO HOUSE – NO TAIL PIPING, PER YVWD STANDARDS.
- 11 METER, METER COUPLINGS, BACKFLOW BRANCH ASSEMBLY LOCK ON/LOCK OFF BALL VALVES, AND SINGLE CHECK VALVE ARE TO BE PROVIDED BY THE PURVEYOR.
- 12 ALL DUAL PLUMBED SERVICES WITH A FIRE SERVICE ARE REQUIRED TO HAVE A DOUBLE CHECK BACKFLOW PREVENTION ASSEMBLY INSTALLED AND TESTED PRIOR TO SERVICES BEING TURNED ON.
- 13 SUBJECT TO PURVEYOR REVIEW AND APPROVAL, THE METER AND METER BOX INCLUDING THE BRANCH ASSEMBLY MAY BE INSTALLED PARALLEL TO THE CURB IF NECESSARY.



**DUAL PLUMBED RESIDENTIAL PROPERTIES REQUIRING
1" FIRE SPRINKLER SERVICE**

2011



Yucaipa Valley Water District

APPROVED BY PURVEYOR

DATE

W-4

SHEET 2 OF 3

LIST OF MATERIALS			
ITEM NO.	SIZE & DESCRIPTION	MANUFACTURER	SPEC. NO.
1A	DOUBLE STRAP SERVICE SADDLE 1" I.P. OUTLET (FOR D.I.P. MAINS)	JONES ROMAC FORD MUELLER	J-979-PIPE O.D. -1" I.P. 202BS-PIPE O.D. -1" I.P. 202BS-PIPE O.D. -1" I.P. BR2B-PIPE O.D. -I.P. 100
1B	CAST SERVICE SADDLE WITH 1" I.P. OUTLET (FOR D.I.P. MAINS)	ROMAC FORD MUELLER	202S-PIPE O.D.-1" I.P. F-202-PIPE O.D.-1" I.P. DR2A-PIPE O.D.-I.P. 100
2	1" BRONZE BALL CORPORATION STOP (M.I.P.T. X COMPRESSION)	JONES MULLER McDONALD FORD	E-1935SG B25028 N 74704BQ
3	1" BLUE PLASTIC COATED COPPER TUBING		COPPER TYPE "K" SOFT
4	BRONZE BALL ANGLE METER STOP W/LOCKWING (1" COMPRESSION X METER)	JONES MUELLER McDONALD FORD	1963WSG B24258-1 N 74602BQ
5	METER COUPLING	JONES MUELLER FORD	J-134 H-10890 C-38
6	1" MINIMUM - DOUBLE CHECK BACKFLOW ASSEMBLY	AMES FEBCO WILKINS	2000SS 850 950XL
7	MINIMUM 12" BRASS NIPPLE TO BACKFLOW BRANCH ASSEMBLY		
8	1" BRASS UNION		
9	1" "U"-BRANCH (M.I.P.T. X M.I.P.T.)	McDONALD	AYM708UMM 1 "X1 "X7.5"
10	BALL VALVE WITH LOCKWING (F.I.P. X F.I.P.)	JONES MUELLER McDONALD FORD	E-1900W B20283 N AYM76101W
11	1" DOUBLE CHECK (INLINE DOUBLE CHECK)	McDONALD	711-4FE 44
12A	METER BOX AND COVER WITH READING LID	ARMOR CAST	A6000485 37S
12B	METER BOX AND COVER WITH READING LID	ARMOR CAST	BOX NUMBER A6001640PCX12 COVER NUMBER A6001643

DUAL PLUMBED RESIDENTIAL PROPERTIES REQUIRING
1" FIRE SPRINKLER SERVICE

2011



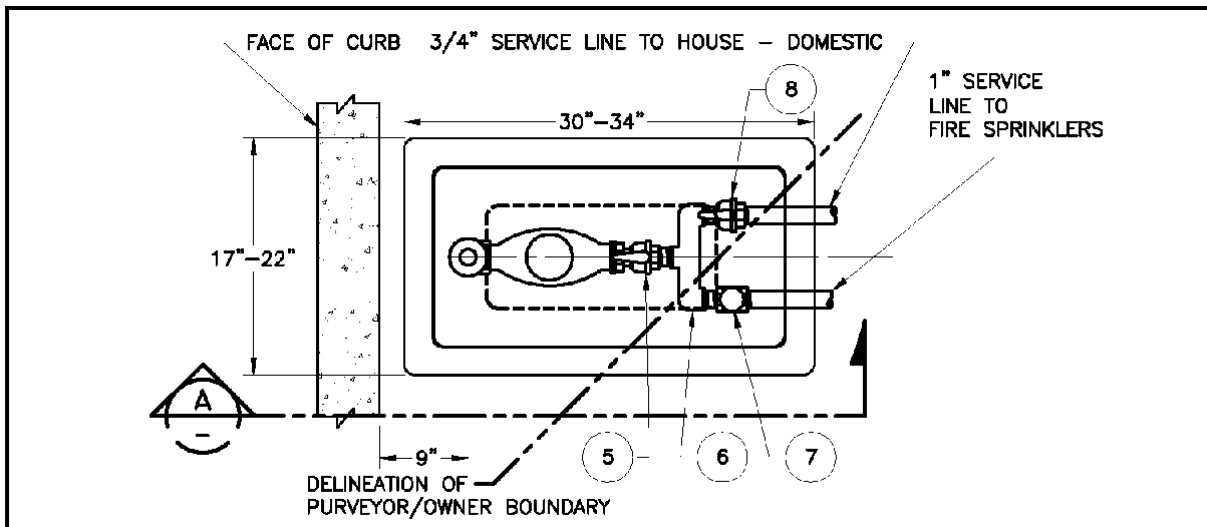
Yucaipa Valley Water District

APPROVED BY PURVEYOR

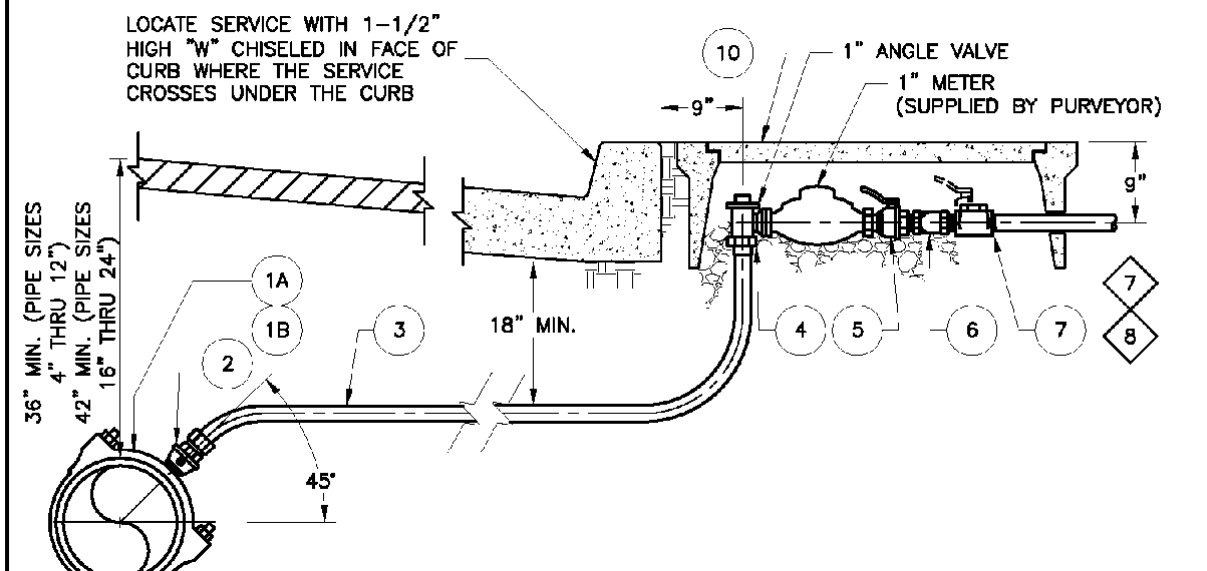
DATE

W-4

SHEET 3 OF 3




PLAN



ELEVATION

SEE SHEET 2 OF 3 FOR ADDITIONAL NOTES
SEE SHEET 3 OF 3 FOR LIST OF MATERIALS

**RESIDENTIAL PROPERTIES REQUIRING
1" FIRE SPRINKLER SERVICE**

2011	 Yucaipa Valley Water District	APPROVED BY PURVEYOR	W-5
		DATE	

NOTES:

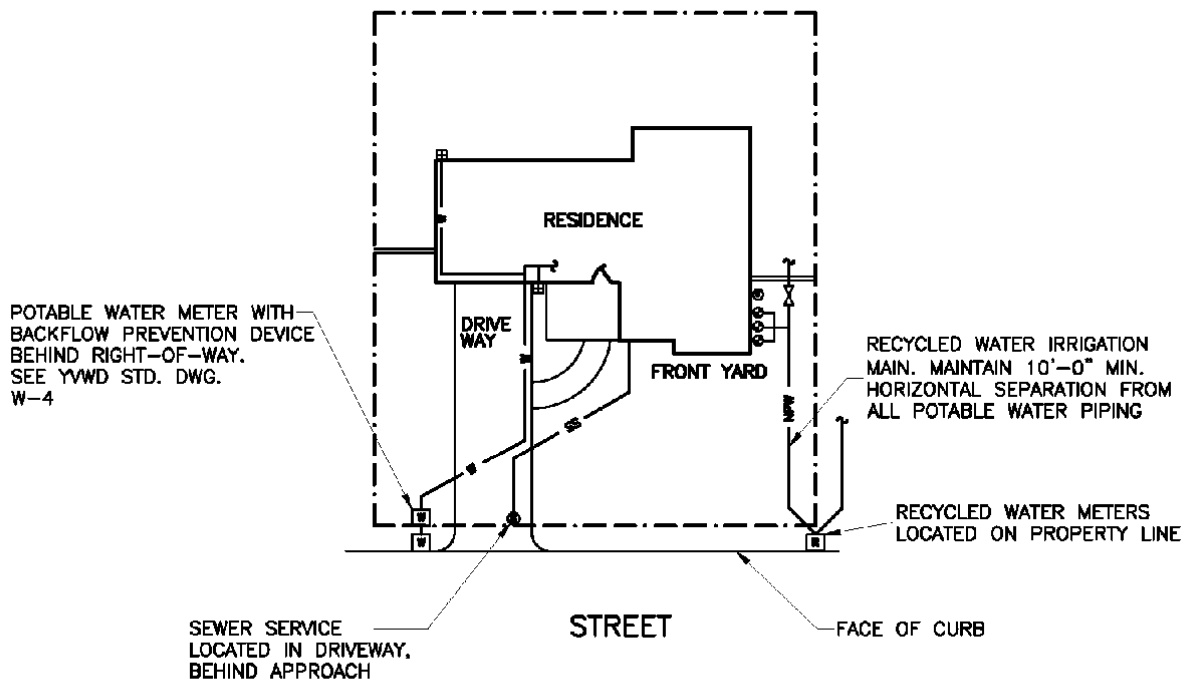
1. SERVICE SADDLE SHALL NOT BE INSTALLED WITHIN 12" OF VALVE, COUPLING, JOINT OR FITTING.
2. SET TOP OF METER BOX FLUSH WITH DRIVEWAY, SIDEWALK OR CURB, AS SHOWN.
3. THE CORPORATION STOP TAP SHALL BE MADE AT A 45° DEGREE ANGLE FROM THE TOP OF THE PIPE.
4. THE WATER SERVICE SHALL EXTEND PERPENDICULAR TO THE CENTERLINE OF THE STREET FROM THE WATER MAIN TO THE METER STOP.
5. ALL CONNECTIONS TO COPPER TUBING SHALL BE COMPRESSION FITTINGS.
6. METERS AND BRANCH ASSEMBLY TO BE CENTERED IN METER BOXES TO ALLOW FOR ACCESS AND MAINTENANCE

7

METER, CUSTOMER SHUT OFF VALVE, RANCH ASSEMBLY, LOCK OFF BALL VALVE, AND DUAL CHECK VALVE ARE TO BE PROVIDED BY THE PURVEYOR.

8

SUBJECT TO PURVEYOR REVIEW AND APPROVAL, THE METER AND METER BOX INCLUDING THE BRANCH ASSEMBLY MAY BE INSTALLED PARALLEL TO THE CURB IF NECESSARY.



**RESIDENTIAL PROPERTIES REQUIRING
1" FIRE SPRINKLER SERVICE**

2011



Yucaipa Valley Water District

APPROVED BY PURVEYOR

DATE

W-5

SHEET 2 OF 3

LIST OF MATERIALS			
ITEM NO.	SIZE & DESCRIPTION	MANUFACTURER	SPEC. NO.
1A	DOUBLE STRAP SERVICE SADDLE 1" I.P. OUTLET (FOR D.I.P. MAINS)	JONES ROMAC FORD MUELLER	J-979-PIPE O.D. -1" I.P. 202BS-PIPE O.D. -1" I.P. 202BS-PIPE O.D. -1" I.P. BR2B-PIPE O.D. -I.P. 100
1B	CAST SERVICE SADDLE WITH 1" I.P. OUTLET (FOR D.I.P. MAINS)	ROMAC FORD MUELLER	202S-PIPE O.D.-1" I.P. F-202-PIPE O.D.-1" I.P. DR2A-PIPE O.D.-I.P. 100
2	1" BRONZE BALL CORPORATION STOP (M.I.P.T. X COMPRESSION)	JONES MULLER McDONALD FORD	E-1935SG B25028 N 74704BQ
3	1" BLUE PLASTIC COATED COPPER TUBING		COPPER TYPE "K" SOFT
4	BRONZE BALL ANGLE METER STOP W/LOCKWING (1" COMPRESSION X METER)	JONES MUELLER McDONALD FORD	1963WSG B24258-1 N 74602BQ
5	1" LOCKWING BALL METER VALVE (LOCK-OFF POSITION)	JONES MUELLER McDONALD FORD	E-1908W B24351 N WITH B20298 AYM76101MWHB1
6	1" "U"-BRANCH (M.I.P.T. X M.I.P.T.)	McDONALD PERFORMANCE	AYM70BUMM 1"x1"x7.5"
7	1" DOUBLE CHECK (INLINE DOUBLE CHECK)	McDONALD	711-4FE 44
8	BALL VALVE WITH LOCKWING (F.I.P. X F.I.P.)	JONES MUELLER McDONALD FORD	E-1900W B20283 N AYM76101W
9	METER BOX AND COVER WITH READING LID	J&R ARMOR CAST - OLD CASTLE	P-W6B A6001640PCX12 WITH A6001643

RESIDENTIAL PROPERTIES REQUIRING
1" FIRE SPRINKLER SERVICE

2011



Yucaipa Valley Water District

APPROVED BY PURVEYOR

DATE

W-5

SHEET 3 OF 3



Date: January 11, 2011

Subject: Presentation of Unaudited Financial Report for December 2010

The District staff has prepared the Unaudited Financial Report for December 2010.

The attached report will be presented again at the board meeting on January 19, 2011.



Yucaipa Valley Water District

Director Memorandum 11-0xx

Date: January 19, 2010 **Job:** Not Applicable

Prepared By: Vicky Elisalda, Controller **G/L:** Not Applicable

Subject: Presentation of the Unaudited Financial Report for December 2010

Recommendation: That the Board receives and files the unaudited financial report as presented.

The following unaudited financial report has been prepared by the Administrative Department for your review. The report has been divided into six sections to clearly disseminate information pertaining to the financial status of the District. Please remember that the following financial information has not been audited.

Cash Fund Balance Report

The Cash Fund Balance Report provides a summary of how the total amount of funds maintained by financial institutions is distributed throughout the enterprise and non-enterprise funds of the District. A summary of the report is as follows:

Fund Source	Operating Funds	Restricted Funds	Total Funds
Water Division	\$517,282.15	\$5,541,818.76	\$6,059,100.91
Sewer Division	\$550,928.59	\$5,494,750.17	\$6,045,678.76
Recycled Division	<u>(\$701,616.07)</u>	<u>\$574,741.49</u>	<u>(\$126,874.58)</u>
Total	\$366,594.67	\$11,611,310.42	\$11,977,905.09

Most of the funds reflected in the Cash Fund Balance Report are designated for specific purposes and are therefore restricted, either by law or by District policy.

Check Register

The check register lists each check processed during the month of December 2010. The District processed 226 checks during the month of December for a total sum of \$1,394,360.20. All checks are reviewed by District staff for accuracy and completeness, and usually signed by the General Manager and one Director, but may be signed by two Directors.

The Controller will make any check, invoice or supporting documentation available for review to any board member upon request.

Financial Account Information

The District currently deposits all revenue received into the Deposit Checking account. The General Checking account is used as a sole processing account for all District checks and electronic payroll. The Investment Checking account is used for the purchase and redemption of US treasury notes and bills. The US treasury notes and bills are booked at cost.

The LAIF investment account is a pooled money account administered by the State of California. Additional information on the LAIF account is provided below in the investment summary report.

Investment Summary

The investment summary report illustrates the District's investments in US treasury notes and bills in addition to the investments held by the Local Agency Investment Fund or LAIF. The yields for the treasury notes and bills are provided for each individual transaction. The historical annual yield for funds invested with LAIF is also provided.

Separate pooled money investment reports prepared by the State of California are maintained by the District and available for review.

Monthly Revenue Allocation

During the month of December 2010 the District received a sum total of \$2,534,940.46 in revenues from the following categories:

- A total of \$1,442,803.37 was received from 14,032 customers for utility bill payments. This is the total amount of utility bill payments received from water, sewer and recycled services.
- A total of \$807.00 was received for construction meter deposits, customer deposits and Internet fee payments.
- A total of \$724,730.09 was received from miscellaneous water related activities (other than utility bill charges). The District received \$960,859.20 from San Bernardino County property taxes and \$38,611.27 from Riverside County property taxes and made a \$311,500 transfer from water to sewer according to current year budget.
- A total of \$354,633.00 was received from miscellaneous sewer related activities (other than utility bill charges).
- A total of \$11,967.00 received from miscellaneous recycled related activities (other than utility bill charges).

The District received ARRA draw #6 in the amount of \$117,256.00 on and Prop 50 draw #2 in the amount of \$296,863.03 on December 9th.

Fiscal Year 2011 Budget Status

The revenue and expense budget status for the 2011 Fiscal Year is provided for your review.

**Summary of Revenue Budget
As of December 31, 2010 (46% of Budget Cycle)**

<u>Division</u>	<u>Budget Amount</u>	<u>Current Month</u>	<u>Year-To-Date</u>	<u>Percentage</u>
Water	12,403,410	1,351,900	5,848,238	47.2
Sewer	10,394,500	1,149,962	4,895,417	47.1
Recycled Water	411,275	28,055	261,413	63.6
District Revenue	23,209,185	2,529,917	11,005,068	47.4

**Summary of Water Budget
As of December 31, 2010 (46% of Budget Cycle)**

<u>Department</u>	<u>Budget Amount</u>	<u>Current Month</u>	<u>Year-To-Date</u>	<u>Percentage</u>
Water Resources	4,217,615	179,675	2,227,400	52.8
Public works	2,017,000	177,064	877,529	43.5
Administration	2,992,576	207,202	1,316,741	44.0
Long Term Debt	2,931,219	0	1,916,406	65.4
Asset Acquisition	245,000	0	0	0.0
TOTAL	12,403,410	563,941	6,338,076	51.1

**Summary of Sewer Budget
As of December 31, 2010 (46% of Budget Cycle)**

<u>Department</u>	<u>Budget Amount</u>	<u>Current Month</u>	<u>Year-To-Date</u>	<u>Percentage</u>
Treatment	3,038,150	210,882	1,499,395	49.4
Administration	3,626,030	275,562	1,816,119	50.1
Environmental Control	786,940	39,300	334,316	42.5
Long Term Debt	2,923,670	0	2,923,669	100.0
Asset Acquisition	19,710	221	6,038	30.6
TOTAL	10,394,500	525,965	6,579,537	63.3

**Summary of Recycled Water Budget
As of December 31, 2010 (46% of Budget Cycle)**

<u>Department</u>	<u>Budget Amount</u>	<u>Current Month</u>	<u>Year-To-Date</u>	<u>Percentage</u>
Administration	411,275	31,149	261,080	63.5
TOTAL	411,275	31,149	261,080	63.5

District Expenses 23,209,185 1,121,055 13,178,693 56.8

Investment Policy Disclosure

The District is currently compliant with the portfolio of its Investment Policy and State Law.

The District is using Sandy Gage with Merrill Lynch Wealth Management (Bank of America Corporation) for Treasury investments. The District expects to meet its expenditure requirements for the next six months.

Questions or Comments

If you have any questions about a particular budget account, please do not hesitate to contact the Controller directly. If you need additional information, the members of the Administrative Department would be happy to provide you with any detailed information you may desire.

Cash Fund Balance Report - December 2010

Water Division	GL#	Balance
Project Fund - Encumbered	02-10215	\$ 720,515.34
ID 1 Construction Funds	02-10216	\$ 293,145.85
ID 2 Construction Funds	02-10217	\$ 80,409.31
Depreciation Reserves	02-10310	\$ 2,316,475.17
Sustainability Fund	02-10313	\$ 25,405.40
Rate Stabilization Fund	02-10314	\$ 455,545.21
Imported Water Fund - MUNI	02-10315	\$ 97,546.45
Imported Water Fund - SGPWA	02-10316	\$ 148,907.88
FCC - Debt Service YVRWFF Phase I	02-10401	\$ 1,399.78
FCC - Future YVRWFF Phase II & III	02-10403	\$ 71,229.57
FCC - Recycled System	02-10410	\$ 110,181.42
FCC - Booster Pumping Plants	02-10411	\$ 121,334.63
FCC - Pipeline Facilities	02-10412	\$ 605,473.54
FCC - Water Storage Reservoirs	02-10413	\$ 494,249.21
Operating Funds:	--	--
Checking Account	02-11001	\$ 30,000.00
LAIF	02-11019	\$ 32,826.14
Savings	02-11020	\$ 454,456.01
Total Water Division		\$ 6,059,100.91

Sewer Division	GL#	Balance
Project Fund - Encumbered	03-10215	\$ 751,089.00
Depreciation Reserves	03-10310	\$ 2,178,948.46
Rate Stabilization Fund	03-10314	\$ 1,463,595.00
FCC - Debt Service WWTP Expansion & Upgrade	03-10405	\$ 370,478.95
FCC - Future WWTP Expansion	03-10407	\$ 222,008.03
FCC - Sewer Interceptors	03-10415	\$ 110,589.86
FCC - Lift Stations	03-10416	\$ 54,572.50
FCC - Effluent Disposal Facilities	03-10417	\$ 72,436.29
FCC - Salt Mitigation Facilities	03-10418	\$ 271,032.08
Operating Funds:	--	--
Savings	03-11020	\$ 550,928.59
Total Wastewater Division		\$ 6,045,678.76

Recycled Water Division	GL#	Balance
Depreciation Reserves	04-10310	\$ 418,663.49
FCC - Recycled System	04-10410	\$ 13,286.93
FCC - Booster Pumping Plants	04-10411	\$ 14,297.75
FCC - Pipeline Facilities	04-10412	\$ 71,152.50
FCC - Water Storage Reservoirs	04-10413	\$ 57,340.82
Operating Funds:	--	--
Savings	04-11020	\$ (701,616.07)
Total Recycled Water Division		\$ (126,874.58)

DISTRICT TOTAL \$ 11,977,905.09

Future Obligations	Due Date	Amount
2004A Bond Payment - Water Division	02/23/2011	\$ 1,014,812.50
SBVMWD - SARI Pipeline Capacity	06/01/2011	\$ 19,710.00
2004A Bond Payment - Water Division	08/27/2011	\$ 1,934,812.50
SRF Payment - Sewer Division	09/10/2011	\$ 2,923,688.75

Check Register - December 2010

<u>Check Date</u>	<u>Check Number</u>	<u>Name</u>	<u>Check Amount</u>
12/03/2010	11034	Inland Empire Resource Conserv	2,000.00
12/03/2010	11035	PAYROLL CHECK	2,186.45
12/03/2010	11036	PAYROLL CHECK	504.38
12/03/2010	11037	CA-PERS 457 Deferred Comp	16,076.60
12/03/2010	11038	Public Employees' Retirement S	26,474.69
12/03/2010	11039	Hong Nelson	125.00
12/03/2010	11040	Katherine Kostelecky	500.00
12/03/2010	11041	United Student Aid Funds, Inc.	165.26
12/03/2010	11042	IBEW Local 1436	396.00
12/06/2010	11043	American Water Works Assoc.	462.00
12/06/2010	11044	California Water Environment A	396.00
12/06/2010	11045	CWEA-TCP (OAKPORT ST.)	598.00
12/06/2010	11046	California Special Districts A	4,456.00
12/06/2010	11047	Department of Motor Vehicles	39.00
12/06/2010	11048	Sara Onate	197.80
12/06/2010	11049	Standard Insurance Company	2,219.96
12/06/2010	11050	Western Dental Services, Inc.	305.49
12/06/2010	11051	Anthem Blue Cross L and H	352.80
12/06/2010	11052	Standard Insurance Company	2,826.53
12/06/2010	11053	Aetna, Inc.	38,934.09
12/06/2010	11054	Standard Insurance Vision Plan	366.52
12/06/2010	11055	MetLife Small Business Center	64.30
12/06/2010	11056	ADS, LLC	2,634.00
12/06/2010	11057	Ameripride Uniform Services	427.05
12/06/2010	11058	Crown Ace Hardware - Yucaipa	524.23
12/06/2010	11059	Fedex	46.13
12/06/2010	11060	Inland Empire Resource Conserv	237.25
12/06/2010	11061	InfoSend, Inc.	3,404.54
12/06/2010	11062	Kelly Services, Inc.	581.25
12/06/2010	11063	Krieger & Stewart	10,685.72
12/06/2010	11064	Leroy's Landscape Services	5,700.00
12/06/2010	11065	NAPA Genuine Parts Company	346.87
12/06/2010	11066	Red Wing - Highland	150.00
12/06/2010	11067	Timothy F. Moore	5,109.45
12/06/2010	11068	San Geronio Pass Water Agency	525.30
12/06/2010	11069	South Coast A.Q.M.D.	1,206.63
12/06/2010	11070	Sims Welding & Supply Co., Inc	173.30
12/06/2010	11071	Association of San Bernardino	210.00
12/06/2010	11072	State Water Resources Control	28,222.00
12/06/2010	11073	The Gas Company	692.71
12/06/2010	11074	Underground Service Alert Of S	133.50
12/06/2010	11075	George F. Siddle	115.00
12/06/2010	11076	Verizon	675.68
12/06/2010	11077	Waterreuse Association	2,197.78
12/06/2010	11078	Workboot Warehouse	600.00
12/06/2010	11079	Yucaipa Disposal, Inc.	1,247.43
12/06/2010	11080	Bernell Hydraulics, Inc.	1,149.49
12/06/2010	11081	Bioscience Inc.	12,594.30
12/06/2010	11082	Brenntag Pacific, Inc	14,810.59
12/06/2010	11083	Calolympic Glove & Safety Co.,	258.14
12/06/2010	11084	CINTAS First Aid & Safety	235.19
12/06/2010	11085	Cortech Engineering	5,817.04
12/06/2010	11086	Daily Journal Corporation	576.40
12/06/2010	11087	Geyser Equipment, LLC	3,915.00
12/06/2010	11088	Alan L. Grubel Automotive Inc.	72.00
12/06/2010	11089	JB Paving & Engineering	2,500.00
12/06/2010	11090	Match Corp	2,036.44
12/06/2010	11091	Merit Oil Company	4,627.28
12/06/2010	11092	Nagem, Inc.	789.21

Check Register - December 2010

<u>Check Date</u>	<u>Check Number</u>	<u>Name</u>	<u>Check Amount</u>
12/06/2010	11093	NetComp Technologies, Inc.	8,534.48
12/06/2010	11094	Oily's Automotive Service & Re	227.50
12/06/2010	11095	P & R Paper Supply Company	841.40
12/06/2010	11096	Pro-Pipe & Supply, Inc.	214.76
12/06/2010	11097	VOID CHECK	0.00
12/06/2010	11098	San Bndo & Riv Counties Fire E	499.59
12/06/2010	11099	Siemens Water Technologies Cor	1,155.88
12/06/2010	11100	Test America Laboratories, Inc	380.00
12/06/2010	11101	Tom Malloy Corp.	75.00
12/06/2010	11102	Gerald L. Gregory	150.00
12/06/2010	11103	UPS Store#1504/ Mail Boxes Etc	117.18
12/06/2010	11104	Frances Webster	196.63
12/06/2010	11105	ZEP Manufacturing Company	98.55
12/06/2010	11106	South Coast A.Q.M.D.	4,534.16
12/06/2010	11107	Pacific Arrowhead Enterprises,	862.09
12/06/2010	11108	RFI	315.00
12/13/2010	11109	Robert Austin	3,110.12
12/13/2010	11110	CWEA-TCP (OAKPORT ST.)	71.00
12/13/2010	11111	Aklufi & Wysocki	11,375.00
12/13/2010	11112	Delta Partners, LLC	7,500.00
12/13/2010	11113	Dudek & Associates, Inc	25,483.57
12/13/2010	11114	Inland Potable Services, Inc.	18,176.50
12/13/2010	11115	Krieger & Stewart	96,217.05
12/13/2010	11116	One Stop Landscape Supply Inc	24,553.00
12/13/2010	11117	Platinum Advisors, LLC	5,125.00
12/13/2010	11118	Separation Processes, Inc.	1,225.00
12/13/2010	11119	VOID CHECK	0.00
12/13/2010	11120	VOID CHECK	0.00
12/13/2010	11121	VTD, Vavrinek, Trine, Day & CO	2,431.00
12/13/2010	11122	Wildermuth Environmental	6,164.00
12/13/2010	11123	Sukut Construction, Inc.	431,487.57
12/13/2010	11124	Union Bank Of California	47,943.06
12/13/2010	11125	Union Bank Of California	5,135.78
12/13/2010	11126	Sukut Construction, Inc.	46,222.00
12/17/2010	11127	PAYROLL CHECK	1,790.01
12/17/2010	11128	Ameripride Uniform Services	423.11
12/17/2010	11129	AT&T Mobility	2,087.11
12/17/2010	11130	VOID CHECK	0.00
12/17/2010	11131	Central Communications	215.75
12/17/2010	11132	House Of Quality, Parts Plus	1,260.07
12/17/2010	11133	Jean's Flower Basket	135.88
12/17/2010	11134	Kelly Services, Inc.	581.25
12/17/2010	11135	NetComp Technologies, Inc.	42.63
12/17/2010	11136	Soboba Band of Luiseno Indians	8,390.69
12/17/2010	11137	The Counseling Team Internatio	300.00
12/17/2010	11138	The Gas Company	16.27
12/17/2010	11139	Verizon	1,121.36
12/17/2010	11140	All American Sewer Tools	455.29
12/17/2010	11141	Auto Care Clinic	1,638.07
12/17/2010	11142	Bioscience Inc.	12,595.33
12/17/2010	11143	Calolympic Glove & Safety Co.,	131.40
12/17/2010	11144	Cherry Valley Feed & Pet Suppl	234.24
12/17/2010	11145	Edward S Babcock & Sons, Inc.	2,240.00
12/17/2010	11146	Eagle Aerial Photoraphy, Inc.	5,723.50
12/17/2010	11147	G&G Environmental Compliance,I	1,034.00
12/17/2010	11148	Geyser Equipment, LLC	149.00
12/17/2010	11149	Grainger	176.53
12/17/2010	11150	Alan L. Grubel Automotive Inc.	240.39
12/17/2010	11151	Hach Company	668.05

Check Register - December 2010

<u>Check Date</u>	<u>Check Number</u>	<u>Name</u>	<u>Check Amount</u>
12/17/2010	11152	Inland Water Works Supply Co.	10,362.63
12/17/2010	11153	J.L. Wingert Co.	1,191.33
12/17/2010	11154	MBC Applied Environmental Scie	1,200.00
12/17/2010	11155	Merit Oil Company	1,733.44
12/17/2010	11156	Microflex Corporation	1,014.64
12/17/2010	11157	Press-Enterprise	581.40
12/17/2010	11158	Heritage Holdings	1,769.13
12/17/2010	11159	Red Alert Special Couriers	2,580.14
12/17/2010	11160	SB & Riv Counties Fire Equipme	741.03
12/17/2010	11161	Smart & Final Stores, LLC	766.41
12/17/2010	11162	Yucaipa Auto Collision	657.55
12/17/2010	11163	CA-PERS 457 Deferred Comp	10,976.61
12/17/2010	11164	Public Employees' Retirement S	26,378.78
12/17/2010	11165	Hong Nelson	125.00
12/17/2010	11166	Katherine Kosteelky	500.00
12/17/2010	11167	United Student Aid Funds, Inc.	194.04
12/17/2010	11168	IBEW Local 1436	18.00
12/17/2010	11169	Boot Barn #4	150.00
12/17/2010	11170	UNDERWOOD, LINDA	1,769.26
12/17/2010	11171	MATICH CORPORATION	1,406.40
12/17/2010	11172	SHATTUCK JR, HOWARD	1,355.10
12/17/2010	11173	WEST COAST STRUCTURE	1,425.51
12/17/2010	11174	ANGELL, JOHN	93.81
12/20/2010	11175	Atkinson, Andelson, Loya, Ruud	2,575.21
12/20/2010	11176	CWEA-TCP (OAKPORT ST.)	71.00
12/20/2010	11177	Addiction Medicine Consultants	1,575.00
12/20/2010	11178	Coverall North America, Inc.	1,021.00
12/20/2010	11179	First American Data Tree, LLC	50.00
12/20/2010	11180	First American Corelogic, Inc.	300.00
12/20/2010	11181	InfoSend, Inc.	4,829.92
12/20/2010	11182	USDA Forest Service	60.00
12/20/2010	11183	Verizon	145.64
12/20/2010	11184	Kelly Services, Inc.	581.25
12/20/2010	11185	Tattletale Portable Alarm Syst	1,974.00
12/20/2010	11186	Aqua-Metric Sales Company	1,572.88
12/20/2010	11187	Brenntag Pacific, Inc	8,448.26
12/20/2010	11188	CHJ Incorporated	1,980.00
12/20/2010	11189	Victor James Valenti	5,329.44
12/20/2010	11190	Grainger	242.96
12/20/2010	11191	Inland Water Works Supply Co.	866.55
12/20/2010	11192	JR Freeman Co. Inc.	624.61
12/20/2010	11193	Redlands Ford	565.97
12/20/2010	11194	SB & Riv Counties Fire Equipme	272.42
12/20/2010	11195	Siemens Water Technologies Cor	2,546.91
12/20/2010	11196	Test America Laboratories, Inc	150.00
12/20/2010	11197	Cortech Engineering	221.16
12/20/2010	11198	Polydyne Inc.	2,451.23
12/20/2010	11199	Alan L. Grubel Automotive Inc.	735.91
12/20/2010	11200	Nagem, Inc.	3,108.20
12/20/2010	11201	Neopost USA Inc.	195.75
12/20/2010	11202	NetComp Technologies, Inc.	2,115.00
12/20/2010	11203	King Lee Chemical, Co.	10,191.03
12/22/2010	11204	FOGLE, JEREMY & AMIT	101.58
12/22/2010	11205	PREFERRED GROUP PROP	48.96
12/22/2010	11206	BECHTEL, WILLIAM C.	98.52
12/27/2010	11207	Ralph C. Casas	35.00
12/27/2010	11208	Ameripride Uniform Services	944.66
12/27/2010	11209	Department of Motor Vehicles	92.00
12/27/2010	11210	Fedex	16.83

Check Register - December 2010

<u>Check Date</u>	<u>Check Number</u>	<u>Name</u>	<u>Check Amount</u>
12/27/2010	11211	InfoSend, Inc.	3,500.99
12/27/2010	11212	Kelly Services, Inc.	600.25
12/27/2010	11213	SCCI, Inc.	350.00
12/27/2010	11214	South Coast A.Q.M.D.	804.42
12/27/2010	11215	Separation Processes, Inc.	4,014.00
12/27/2010	11216	Verizon	122.08
12/27/2010	11217	Workboot Warehouse	300.00
12/27/2010	11218	All American Sewer Tools	3,375.58
12/27/2010	11219	VOID CHECK	0.00
12/27/2010	11220	Bob Walker	38.06
12/27/2010	11221	Brenntag Pacific, Inc	22,204.78
12/27/2010	11222	Calolympic Glove & Safety Co.,	449.47
12/27/2010	11223	Clinical Laboratory of San Ber	231.00
12/27/2010	11224	Forestry Suppliers Inc.	228.12
12/27/2010	11225	Grainger	360.72
12/27/2010	11226	Hach Company	2,153.24
12/27/2010	11227	Harbor Freight Tools	137.20
12/27/2010	11228	Hemet Valley Tool & Supply	51.85
12/27/2010	11229	Inland Water Works Supply Co.	883.06
12/27/2010	11230	Innerline Engineering	5,000.00
12/27/2010	11231	JR Freeman Co. Inc.	589.60
12/27/2010	11232	Merit Oil Company	4,051.63
12/27/2010	11233	Nagem, Inc.	927.50
12/27/2010	11234	P & R Paper Supply Company	106.18
12/27/2010	11235	VOID CHECK	0.00
12/27/2010	11236	VOID CHECK	0.00
12/27/2010	11237	RFI	525.00
12/27/2010	11238	Test America Laboratories, Inc	230.00
12/27/2010	11239	Univar USA Inc.	132.68
12/27/2010	11240	HD Supply Facilities Maintenanc	689.98
12/27/2010	11241	VOID CHECK	0.00
12/30/2010	11242	American Family Life Assurance	2,420.23
12/30/2010	11243	YWWD-Petty Cash	211.76
12/30/2010	11244	Cypress Insurance Company	18,062.00
12/30/2010	11245	BofA Credit Card	1,987.41
12/30/2010	11246	PAYROLL CHECK	2,053.44
12/30/2010	11247	Red Alert Special Couriers	1,423.87
12/30/2010	11248	SCCI, Inc.	225.00
12/30/2010	11249	Staples, Inc.	159.69
12/30/2010	11250	Redlands Ford	521.43
12/30/2010	11251	SCE Rosemead	147,190.38
12/30/2010	11252	CA-PERS 457 Deferred Comp	9,134.41
12/30/2010	11253	Public Employees' Retirement S	26,378.78
12/30/2010	11254	United Student Aid Funds, Inc.	165.28
12/30/2010	11255	Donegan Tree Service	200.00
12/30/2010	11256	Konica Minolta Business Soluti	364.48
12/30/2010	11257	MBC Applied Environmental Scie	1,200.00
12/30/2010	11258	Test America Laboratories, Inc	380.00
12/30/2010	11259	Gerald L. Gregory	150.00
December 2010 Check Register Total			1,394,360.20

Financial Account Information - December 2010

DATE	DESCRIPTION	Deposit Checking	General Checking	Investment Checking	Treasuries at cost	LAIF Invest. Fund	TOTAL ACTIVITY
11/30/2010	bal forward	1,872,126.53	30,000.00	82,787.04	9,073,810.93	32,826.14	10,891,550.64
11/30	rev retained in MM				(193.27)		(193.27)
12/01/2010	Deposit	38,742.40					38,742.40
	Deposit-SB taxes	194,565.37					194,565.37
	Credit Card-11/30	394.84					394.84
	Credit Card-12/1	5,385.60					5,385.60
	Electronic	13,476.38					13,476.38
	Website-12/1	723.91					723.91
	Website-12/2	27.20					27.20
	Website-12/2	102.42					102.42
12/03/10-PR	Federal Taxes		(40,001.06)				(40,001.06)
12/03/10-PR	State Taxes		(7,151.77)				(7,151.77)
12/03/10-PR	PR Direct Deposit		(102,569.14)				(102,569.14)
12/03/10-PR	ING 457		(11,946.33)				(11,946.33)
	Cks#11034-11042		(48,428.40)				(48,428.40)
	TRF#954-AP&PR	(210,096.70)	210,096.70				0.00
12/02/2010	Deposit	44,529.05					44,529.05
	Deposit-Riv taxes	244.25					244.25
	Credit Card-12/1	189.86					189.86
	Credit Card-12/2	1,334.50					1,334.50
	Electronic	11,725.77					11,725.77
	Website-12/2	1,308.68					1,308.68
	Website-12/3	154.33					154.33
	ETS Fees	(1,154.81)					(1,154.81)
	ETS Fees	(940.79)					(940.79)
12/03/2010	Deposit	35,800.25					35,800.25
	Credit Card-12/2	210.72					210.72
	Credit Card-12/3	1,266.43					1,266.43
	Electronic	18,621.17					18,621.17
	Website-12/3	1,184.04					1,184.04
	Website-12/4	505.97					505.97
	Website-12/5	882.64					882.64
	Website-12/6	295.29					295.29
	ACH pmts	28,654.46					28,654.46
12/06/2010	Deposit	82,754.45					82,754.45
	Credit Card -12/3	469.09					469.09
	Credit Card -12/6	3,657.78					3,657.78
	Electronic	12,395.65					12,395.65
	Electronic	4,386.62					4,386.62
	Website-12/6	1,029.65					1,029.65
	Website-12/7	38.43					38.43
12/07/2010	Deposit	51,434.78					51,434.78
	Deposit-M/C	22,217.13					22,217.13
	Credit Card-12/6	497.93					497.93
	Credit Card-12/7	1,902.88					1,902.88
	Electronic	68.03					68.03
	Electronic	5,232.33					5,232.33
	Electronic	11,158.71					11,158.71
	Website-12/7	1,538.50					1,538.50
	Website-12/8	274.35					274.35
	Website-12/8	249.05					249.05

Financial Account Information - December 2010

DATE	DESCRIPTION	Deposit Checking	General Checking	Investment Checking	Treasuries at cost	LAIF Invest. Fund	TOTAL ACTIVITY
11/30/2010	bal forward	1,672,126.53	30,000.00	82,787.04	9,073,810.93	32,826.14	10,891,550.64
12/08/2010	Deposit	68,870.90					68,870.90
	Credit Card-12/7	66.38					66.38
	Credit Card-12/8	6,383.75					6,383.75
	Electronic	3,380.94					3,380.94
	Electronic	4,558.78					4,558.78
	Website-12/8	1,196.84					1,196.84
	Website-12/9	105.13					105.13
	Cks#11043-11108		(184,647.61)				(184,647.61)
	TRF#955-AP	(184,647.61)	184,647.61				0.00
12/09/2010	Deposit	20,678.17					20,678.17
	Credit Card-12/8	147.66					147.66
	Credit Card-12/9	414.08					414.08
	Electronic	4,778.68					4,778.68
	Website-12/9	431.51					431.51
	Website-12/10	544.95					544.95
12/9	ARRA Draw #6		117,256.00				117,256.00
12/9	SAWPA Prop 50 inv #2 wire		296,863.03				296,863.03
12/10	TRF#956-ARRA & Prop 50	414,119.03	(414,119.03)				0.00
12/10/2010	Deposit	21,024.73					21,024.73
	Credit Card-12/9	98.95					98.95
	Credit Card-12/10	1,317.98					1,317.98
	Electronic	9,335.00					9,335.00
	Website-12/10	1,439.06					1,439.06
	Website-12/11	756.13					756.13
	Website-12/12	520.09					520.09
	Website-12/13	68.44					68.44
	Website-12/13	259.60					259.60
	ACH pmts	37,697.85					37,697.85
12/13/2010	Deposit	99,861.52					99,861.52
	Credit Card-12/10	168.32					168.32
	Credit Card-12/13	1,934.68					1,934.68
	Electronic	8,304.42					8,304.42
	Electronic	3,507.07					3,507.07
	Website-12/13	875.84					875.84
	Website-12/14	74.88					74.88
12/14/2010	Deposit	32,717.10					32,717.10
	Deposit-SB taxes	217,377.55					217,377.55
	Dep-SRF#2-Brinelline	35,062.00					35,062.00
	Deposit-M/C	5,838.64					5,838.64
	Credit Card-12/13	302.24					302.24
	Credit Card-12/14	2,567.46					2,567.46
	Electronic	14,557.05					14,557.05
	Website-12/14	1,740.49					1,740.49
	Website-12/15	59.53					59.53
12/15/2010	Deposit	40,862.56					40,862.56
	Deposit-Riv taxes	38,055.61					38,055.61
	Deposit-SB taxes	4,599.94					4,599.94
	Deposit-Riv taxes	311.41					311.41
	Credit Card-12/14	243.62					243.62
	Credit Card-12/15	4,072.33					4,072.33
	Electronic	9,787.96					9,787.96
	Website-12/15	1,069.61					1,069.61
	Website-12/16	74.50					74.50
12/15	ACH pmts	33,503.54					33,503.54

Financial Account Information - December 2010

DATE	DESCRIPTION	Deposit Checking	General Checking	Investment Checking	Treasuries at cost	LAIF Invest. Fund	TOTAL ACTIVITY
11/30/2010	bal forward	1,672,126.53	30,000.00	82,787.04	9,073,810.93	32,826.14	10,891,550.64
12/17/10-PR	Federal Taxes		(36,160.24)				(36,160.24)
12/17/10-PR	State Taxes		(6,520.38)				(6,520.38)
12/17/10-PR	PR Direct Deposit		(99,149.01)				(99,149.01)
12/17/10-PR	ING 457		(6,172.59)				(6,172.59)
	Cks#11109-11174		(840,859.79)				(840,859.79)
	TRF#957-AP&PR	(988,862.01)	988,862.01				0.00
12/16/2010	Deposit	29,208.43					29,208.43
	Deposit-M/C	10,000.00					10,000.00
	Credit Card-12/15	441.12					441.12
	Credit Card-12/16	805.67					805.67
	Electronic	7,218.77					7,218.77
	Website-12/16	1,001.58					1,001.58
	Website-12/17	82.76					82.76
	TRF#958-treas purch	(1,500,000.00)		1,500,000.00			0.00
	TRF#959-treas purch			(1,500,000.00)			(1,500,000.00)
12/17/2010	Deposit	25,451.95					25,451.95
	Credit Card-12/16	433.31					433.31
	Credit Card-12/17	1,468.46					1,468.46
	Electronic	12,982.51					12,982.51
	Website-12/17	1,082.87					1,082.87
	Website-12/18	688.81					688.81
	Website-12/19	104.36					104.36
	Website-12/20	112.09					112.09
12/20/2010	Deposit	50,413.27					50,413.27
	Deposit-SB taxes	544,316.34					544,316.34
	Credit Card-12/17	72.06					72.06
	Credit Card-12/20	2,309.25					2,309.25
	Electronic	14,085.70					14,085.70
	Website-12/20	7,344.82					7,344.82
	ACH pmts	18,267.78					18,267.78
12/21/2010	Deposit	28,457.78					28,457.78
	Credit Card-12/21	3,638.61					3,638.61
	Electronic	14,288.48					14,288.48
	Website-12/21	1,652.12					1,652.12
	Website-12/22	495.81					495.81
12/22/2010	Deposit	38,814.66					38,814.66
	Deposit-M/C	34,058.06					34,058.06
	Credit Card-12/21	521.81					521.81
	Credit Card-12/22	1,801.13					1,801.13
	Electronic	6,095.67					6,095.67
	Website-12/22	1,131.91					1,131.91
	Website-12/23	275.50					275.50
	Cks#11175-11206		(55,050.36)				(55,050.36)
	TRF#960-AP	(55,050.36)	55,050.36				0.00
12/23/2010	Deposit	12,948.76					12,948.76
	Credit Card-12/22	221.21					221.21
	Credit Card-12/23	445.45					445.45
	Electronic	6,263.56					6,263.56
	Website-12/23	666.27					666.27
	Website-12/24	443.76					443.76
	Website-12/25	110.00					110.00
12/24/2010	Electronic	9,216.71					9,216.71
12/27/2010	Deposit	57,090.37					57,090.37
	Credit Card-12/23	44.02					44.02

Financial Account Information - December 2010

DATE	DESCRIPTION	Deposit Checking	General Checking	Investment Checking	Treasuries at cost	LAIF Invest. Fund	TOTAL ACTIVITY
11/30/2010	bal forward	1,672,126.53	30,000.00	82,787.04	9,073,810.93	32,826.14	10,891,550.84
	Credit Card-12/27	3,923.07					3,923.07
	Electronic	12,419.97					12,419.97
	Website-12/27	1,172.80					1,172.80
	Website-12/28	324.66					324.66
	ACH pmnts	53,958.77					53,958.77
12/28/2010	Deposit	31,690.43					31,690.43
	Credit Card-12/27	158.54					158.54
	Credit Card-12/28	1,621.58					1,621.58
	Electronic	10,584.16					10,584.16
	Website-12/28	1,159.05					1,159.05
	Website-12/29	360.91					360.91
12/29/2010	Deposit	46,399.20					46,399.20
	Deposit-M/C	1,983.94					1,983.94
	Credit Card-12/28	886.78					886.78
	Credit Card-12/29	3,796.42					3,796.42
	Electronic	6,845.29					6,845.29
	Website-12/29	1,522.71					1,522.71
	Website-12/30	137.59					137.59
12/30/10-PR	Federal Taxes		(38,291.71)				(38,291.71)
12/30/10-PR	State Taxes		(7,164.40)				(7,164.40)
12/30/10-PR	PR Direct Deposit		(105,615.19)				(105,615.19)
12/30/10-PR	ING 457		(4,849.70)				(4,849.70)
	Cks#11207-11259		(265,374.04)				(265,374.04)
	TRF#961-AP&PR	(421,295.04)	421,295.04				0.00
12/30/2010	Deposit	52,694.54					52,694.54
	Credit Card-12/29	113.41					113.41
	Credit Card-12/30	1,083.63					1,083.63
	Electronic	5,559.17					5,559.17
12/31/10	Electronic	8,733.92					8,733.92
	December '10 NSF's	(850.25)					(850.25)
12/16	Cusip #912795UK5 Maturity				(1,229,812.90)		(1,229,812.90)
12/20	Cusip #9127952R1 Purchase				2,730,146.56		2,730,146.56
12/31	retained in MM				52.14		52.14
	TOTALS	1,258,288.45	30,000.00	82,787.04	10,574,003.46	32,826.14	11,977,905.09

Investment Summary - December 2010

U.S. TREASURIES						
Quantity	Description	Cusip	Maturity Date	Yield	Cost of Purchase	Market Value
1,230,000	US Treasury Bill	912795X89	January 20, 2011	0.070%	1,229,741.70	1,229,975.40
2,502,000	US Treasury Bill	9127952B6	February 17, 2011	0.070%	2,501,374.50	2,501,649.72
2,901,000	US Treasury Bill	9127952H3	March 24, 2011	0.070%	2,900,131.30	2,900,245.74
1,213,000	US Treasury Bill	9127952M2	April 21, 2011	0.090%	1,212,557.26	1,212,502.67
2,731,000	US Treasury Bill	9127952R1	May 19, 2011	0.070%	2,730,146.56	2,729,443.33
10,577,000			Total Values		10,573,951.32	10,573,816.86

Money Market Account Activity-Beginning Balance	193.27
12/31/10 - Dividend	5.43
12/16/10 - Cusip # 912795UK58 Interest	187.10
Income	192.53
Intra-Bank Transfers to/from Investment Checking	1,500,000.00
Fund Transfers	1,500,000.00
12/16/10 - Cusip # 912795UK5 Maturity	1,229,812.90
Redemptions	1,229,812.90
12/20/10 - Cusip # 9127952R1 Purchase	(2,730,146.56)
Purchases	(2,730,146.56)
 Ending Balance - Money Market	 52.14
 US Treasury Securities Investment Principal	 10,573,951.32
 Total Assets	 10,574,003.46

Investment Summary - December 2010

LOCAL AGENCY INVESTMENT FUND

PERIOD	TOTAL WITHDRAWAL AMOUNT	TOTAL DEPOSIT AMOUNT	ACCRUED INTEREST (QUARTERLY)	ENDING BALANCE
July 31, 2010	\$0.00	\$0.00	\$45.39	\$32,783.80
August 31, 2010	\$0.00	\$0.00	\$0.00	\$32,783.80
September 30, 2010	\$0.00	\$0.00	\$0.00	\$32,783.80
October 31, 2010	\$0.00	\$0.00	\$42.34	\$32,826.14
November 30, 2010	\$0.00	\$0.00	\$0.00	\$32,826.14
December 31, 2010	\$0.00	\$0.00	\$0.00	\$32,826.14
January 31, 2011	\$0.00	\$0.00	\$0.00	\$32,826.14
February 28, 2011	\$0.00	\$0.00	\$0.00	\$32,826.14
March 31, 2011	\$0.00	\$0.00	\$0.00	\$32,826.14
April 30, 2011	\$0.00	\$0.00	\$0.00	\$32,826.14
May 31, 2011	\$0.00	\$0.00	\$0.00	\$32,826.14
June 30, 2011	\$0.00	\$0.00	\$0.00	\$32,826.14

L.A.I.F. INCOME SUMMARY

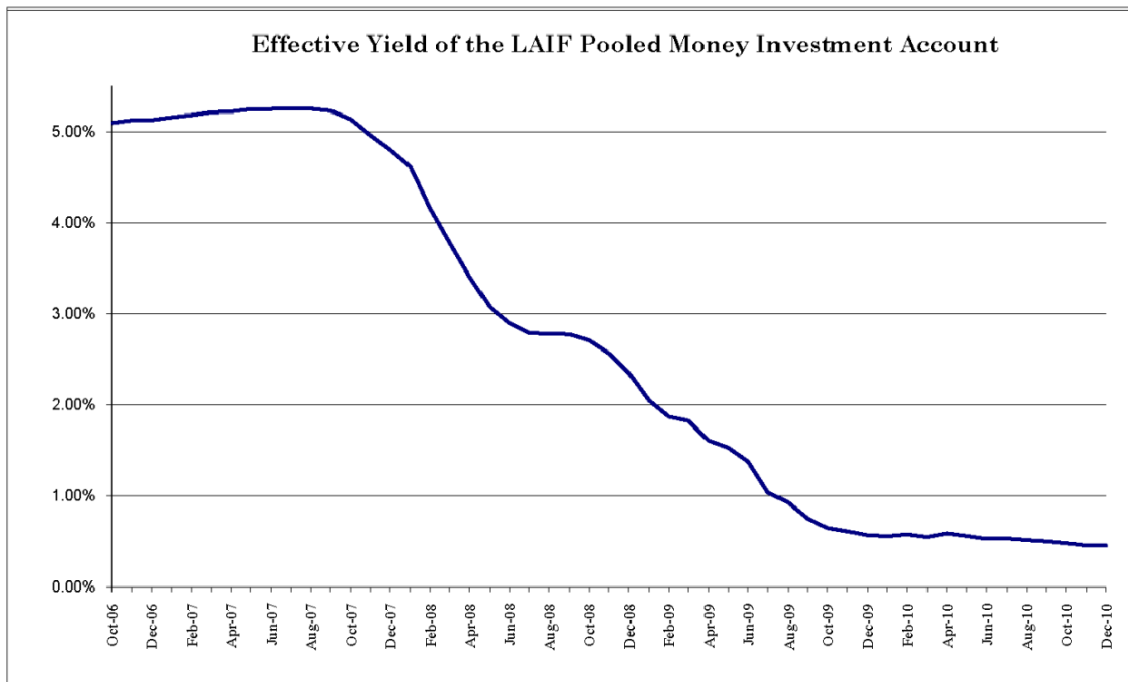
INCOME RECEIVED

CURRENT QUARTER

\$42.34

FY YEAR-TO-DATE

\$87.73



Monthly Revenue Allocation - December 2010

DATE	Description	Qty	DEPOSIT CHECKING DEPOSITS	AR Mail & Counter	AR Payment Centers	AR Credit Card	AR Electronic Rapid Pay	AR Web Site	AR ACH Auto Pay	AR TOTAL	AR Water Fees & Deposits	Water Allocation	Sewer Allocation	NonPot Allocation	RECAP TOTAL
12/01/2010	Mail & Counter	445	38,742.40	38,742.40						38,742.40					38,742.40
	Dep-SB Taxes	-	194,565.37	3,899.90						3,899.90		190,665.47			194,565.37
	Credit Cards	29	5,780.44			5,780.44				5,780.44					5,780.44
	Electronic	173	13,476.38				13,476.38			13,476.38					13,476.38
	Website	11	853.53					834.28		834.28	19.25				853.53
12/02/2010	Mail & Counter	392	44,529.05	44,529.05						44,529.05					44,529.05
	Dep-Riv Taxes	-	244.25							0.00		244.25			0.00
	Credit Cards	12	1,524.36			1,524.36				1,524.36					1,524.36
	Electronic	165	11,725.77				11,725.77			11,725.77					11,725.77
	Website	17	1,463.01					1,433.26		1,433.26	29.75				1,463.01
12/03/2010	Mail & Counter	404	35,800.25	35,800.25						35,800.25					35,800.25
	Credit Cards	15	1,477.15			1,477.15				1,477.15					1,477.15
	Electronic	262	18,621.17				18,621.17			18,621.17					18,621.17
	Website	28	2,867.94					2,818.94		2,818.94	49.00				2,867.94
	ACH payment	343	28,654.46	28,654.46					28,654.46	28,654.46					28,654.46
12/06/2010	Mail & Counter	666	82,754.45	82,754.45						82,754.45					82,754.45
	Credit Cards	25	4,126.87			4,126.87				4,126.87					4,126.87
	Electronic	226	16,782.27				16,782.27			16,782.27					16,782.27
	Website	13	1,066.08					1,045.33		1,045.33	22.75				1,066.08
12/07/2010	Mail & Counter	412	51,434.78	51,434.78						51,434.78					51,434.78
	Deposit-MC	22	2,217.13							0.00		2,217.13			2,217.13
	Credit Cards	23	2,400.81			2,400.81				2,400.81					2,400.81
	Electronic	220	16,459.07				16,459.07			16,459.07					16,459.07
	Website	15	2,061.90							2,061.90					2,061.90
12/08/2010	Mail & Counter	355	68,870.90	68,870.90						68,870.90					68,870.90
	Credit Cards	44	6,450.13			6,450.13				6,450.13					6,450.13
	Electronic	111	7,939.72				7,939.72			7,939.72					7,939.72
	Website	15	1,301.97					1,277.47		1,277.47	24.50				1,301.97
12/09/2010	Mail & Counter	256	20,678.17	20,678.17						20,678.17					20,678.17
	Credit Cards	5	561.74			561.74				561.74					561.74
	Electronic	64	4,778.68				4,778.68			4,778.68					4,778.68
	Website	9	976.46					960.71		960.71	15.75				976.46
	ACH payment	9	976.46							0.00					0.00
	ACH payment	9	976.46							0.00					0.00
	ACH payment	9	976.46							0.00					0.00
12/10/2010	Mail & Counter	255	21,024.73	21,024.73						21,024.73					21,024.73
	Credit Cards	9	1,416.93			1,416.93				1,416.93					1,416.93
	Electronic	124	9,335.00				9,335.00			9,335.00					9,335.00
	Website	29	3,043.32					2,992.57		2,992.57	50.75				3,043.32
	ACH payment	442	37,697.85						37,697.85	37,697.85					37,697.85
12/13/2010	Mail & Counter	579	99,861.52	99,741.52						99,741.52	120.00				99,861.52
	Credit Cards	18	2,105.00			2,105.00				2,105.00					2,105.00
	Electronic	153	11,811.49				11,811.49			11,811.49					11,811.49
	Website	10	950.72					933.22		933.22	17.50				950.72
12/14/2010	Mail & Counter	375	32,717.10	32,717.10						32,717.10					32,717.10
	Deposit-SB Taxes	-	217,377.55	4,796.22						4,796.22					217,377.55
	Dep-SRF#2-Brnlne	-	35,062.00							0.00		35,062.00			35,062.00
	Deposit-MC	-	5,838.64							0.00		5,838.64			5,838.64
	Credit Cards	25	2,869.70			2,869.70				2,869.70					2,869.70
	Electronic	192	14,557.05				14,557.05			14,557.05					14,557.05
	Website	16	1,800.02					1,777.27		1,777.27	22.75				1,800.02
13 fees	Mail & Counter	296	40,862.56	40,742.56						40,742.56	120.00				40,862.56
	Deposit-SB Taxes	-	38,055.61							0.00		38,055.61			38,055.61
	Deposit-Riv Tax	-	4,599.94							0.00		4,599.94			4,599.94
	Deposit-SB Taxes	-	311.41							0.00		311.41			311.41
	Deposit-Riv Tax	32	4,315.95			4,315.95				4,315.95					4,315.95
	Credit Cards	122	9,787.96				9,787.96			9,787.96					9,787.96
	Electronic	13	1,144.11					1,121.36		1,121.36	22.75				1,144.11
	Website	13	1,144.11							0.00					1,144.11
	ACH payment	430	33,903.54						33,903.54	33,903.54					33,903.54

Monthly Revenue Allocation - December 2010

DATE	Description	QTY	CHECKING DEPOSITS	AR Mail & Counter	AR Payment Centers	AR Credit Card	AR Electronic Rapid Pay	AR Web Site	AR ACH Auto Pay	AR TOTAL	AR Water Fees & Deposits	Water Allocation	Sewer Allocation	NonPot Allocation	RECAP TOTAL
12/16/2010	Mail & Counter	203	29,208.43	29,208.43						29,208.43					29,208.43
	Deposit-MC	-	10,000.00							0.00		10,000.00			10,000.00
	Credit Cards	11	1,246.79			1,246.79				1,246.79					1,246.79
	Electronic	102	7,218.77				7,218.77			7,218.77					7,218.77
	Website	7	1,084.34					1,072.09		1,072.09	12.25				1,084.34
12/17/2010	Mail & Counter	263	25,451.95	25,451.95						25,451.95					25,451.95
	Credit Cards	20	1,901.77			1,901.77				1,901.77					1,901.77
	Electronic	171	12,982.51				12,982.51			12,982.51					12,982.51
	Website	25	1,988.13					1,944.38		1,944.38	43.75				1,988.13
12/20/2010	Mail & Counter	521	50,413.27	50,413.27						50,413.27					50,413.27
	Deposit-SB Taxes		544,316.34	8,604.03						8,604.03		535,712.31			544,316.34
	Credit Cards	22	2,381.31			2,381.31				2,381.31					2,381.31
	Electronic	192	14,085.70				14,085.70			14,085.70					14,085.70
	Website	16	7,344.82					7,316.82		7,316.82	28.00				7,344.82
	ACH payment	411	18,267.78						18,267.78	18,267.78					18,267.78
12/21/2010	Mail & Counter	356	28,457.78	28,457.78						28,457.78					28,457.78
	Credit Cards	26	3,638.61			3,638.61				3,638.61					3,638.61
	Electronic	195	14,288.48				14,288.48			14,288.48					14,288.48
	Website	22	2,147.83					2,109.43		2,109.43	38.50				2,147.83
12/22/2010	Mail & Counter	294	38,814.66	38,814.66						38,814.66					38,814.66
	Deposit-MC		34,058.06							0.00		20,520.06		5,467.00	34,058.06
	Credit Cards	21	2,322.94			2,322.94				2,322.94					2,322.94
	Electronic	96	6,095.67				6,095.67			6,095.67					6,095.67
	Website	15	1,407.41					1,381.16		1,381.16	26.25				1,407.41
12/23/2010	Mail & Counter	195	12,948.76	12,948.76						12,948.76					12,948.76
	Credit Cards	6	666.66			666.66				666.66					666.66
	Electronic	84	6,263.56				6,263.56			6,263.56					6,263.56
	Website	14	1,220.03					1,195.53		1,195.53	24.50				1,220.03
12/24/2010	Electronic	129	9,216.71				9,216.71			9,216.71					9,216.71
12/27/2010	Mail & Counter	495	57,090.37	57,090.37						57,090.37					57,090.37
	Credit Cards	40	3,967.09			3,967.09				3,967.09					3,967.09
	Electronic	170	12,419.97				12,419.97			12,419.97					12,419.97
	Website	16	1,497.46					1,469.46		1,469.46	28.00				1,497.46
	ACH payment	493	53,958.77						53,958.77	53,958.77					53,958.77
12/28/2010	Mail & Counter	397	31,690.43	31,690.43						31,690.43					31,690.43
	Credit Cards	16	1,780.12			1,780.12				1,780.12					1,780.12
	Electronic	155	10,584.16				10,584.16			10,584.16					10,584.16
	Website	18	1,519.96					1,488.46		1,488.46	31.50				1,519.96
12/29/2010	Mail & Counter	377	46,399.20	46,399.20						46,399.20					46,399.20
	Deposit-MC		1,983.94							0.00		1,983.94			1,983.94
	Credit Cards	33	4,683.20			4,683.20				4,683.20					4,683.20
	Electronic	87	6,845.29				6,845.29			6,845.29					6,845.29
	Website	19	1,660.30					1,627.05		1,627.05	33.25				1,660.30
12/30/2010	Mail & Counter	218	52,694.54	52,694.54						52,694.54					52,694.54
	Credit Cards	12	1,197.04			1,197.04				1,197.04					1,197.04
	Electronic	72	5,559.17				5,559.17			5,559.17					5,559.17
12/31/2010	Electronic	122	8,733.92				8,733.92			8,733.92					8,733.92
	Reclass tax revenue per budget allocation									0.00		(193,000.00)		6,500.00	0.00
	Reclass tax revenue per budget allocation									0.00		(125,000.00)			0.00
Dec-10	Utility Pmt Cntr-460		(32,719.94)	(32,719.94)						0.00					0.00
	Dec '10 NSF's									0.00					0.00
TOTALS			14,032	2,534,940.46	894,785.51	32,719.94	249,568.47	36,834.44	172,082.40	1,442,803.37	807.00	794,730.09	354,633.00	11,967.00	2,534,940.46
TOTAL # AR PAYMENTS				7,294	460	444	3,387	328	2,119	14,032					
PERCENT OF TOTAL RECEIVED				51.98%	3.28%	3.16%	24.14%	2.34%	15.10%	100%					

FY 2011 - Water Revenue

ACCOUNT#	DESCRIPTION	BUDGET	July '10	Aug '10	Sept '10	Oct '10	Nov '10	Dec '10	Year to Date	Percentage YTD
02-40010	Sales - Water	5,975,000	182,137	740,517	916,226	612,943	363,663	356,252	3,171,738	53.08%
02-40011	Sales - Construction Water	20,000	761	4,332	8,768	6,891	3,352	2,886	26,991	134.95%
02-40013	Sales - Imported Water	800,000	32,304	122,070	148,871	102,761	63,708	62,689	532,404	66.55%
02-40014	Sales Disc - Multi Units Usage Chrg.	(125,000)	(3,730)	(13,214)	(15,491)	(11,899)	(8,858)	(10,513)	(63,707)	50.97%
02-40015	Water Wholesale Revenue	170,000	3,909	3,935	3,511	3,371	3,237	23,890	41,853	24.62%
02-40016	Service Establishment Fee	100	0	0	0	0	0	0	0	0.00%
02-41000	Service Demand Charges	2,100,000	50,401	160,959	184,363	178,477	160,927	183,835	918,961	43.76%
02-41001	Fire Service Standby Fees	17,500	528	1,229	1,370	1,338	1,242	1,442	7,148	40.85%
02-41003	Construction Service Charge	15,000	105	545	501	398	536	598	2,883	17.89%
02-41005	Sales Disc - Multi Units Service Chrg	(80,000)	(2,461)	(7,488)	(8,557)	(8,290)	(7,488)	(8,557)	(42,840)	47.60%
02-41010	Unauthorized Use of Water Charge	2,500	325	0	0	0	65	0	390	15.60%
02-41110	Meter/Lateral Installation	2,500	0	0	0	0	0	650	650	26.00%
02-41112	Fire Flow Test Fees	2,500	225	150	150	75	150	150	900	36.00%
02-41113	Disconnect/Reconnect Fees	150,000	8,380	6,965	11,310	9,945	8,215	8,070	52,885	35.26%
02-41121	Delinquent Payment Charges	135,000	12,838	15,683	13,061	19,446	14,751	8,787	84,566	62.64%
02-41124	Bad Debt	0	0	0	0	0	0	0	0	0
02-42123	Management & Accounting Fees	563,310	49,443	49,443	49,443	49,443	49,443	49,443	296,555	50.00%
02-43010	Interest Earned	50,000	85	255	102	66	495	193	1,196	2.39%
02-43110	Property Tax - Unsecured	100,000	0	0	0	6,054	89,543	(46,859)	48,739	48.74%
02-43120	Property Tax - Secured	2,300,000	0	0	0	0	(390)	705,291	704,901	30.65%
02-43130	Tax Collection - Prior	75,000	0	366	0	9,363	9,165	(6,876)	12,217	16.29%
02-43140	Other Taxes	75,000	0	213	0	0	27	13,248	13,488	17.98%
02-48150	Revenue - Misc. Non-Operating	35,000	2,338	13,650	2,889	5,807	5,055	7,082	36,421	104.06%
	WATER OPERATING REVENUE	12,403,410	337,587	1,099,609	1,316,317	985,988	756,838	1,351,900	5,848,238	47.15%
02-82002	Grants (FEMA)	0	0	0	0	3,172	0	5,061	8,233	
02-89901	Facility Capacity Charges	0	0	0	0	0	0	5,156	5,156	
	TOTAL WATER REVENUE	12,403,410	337,587	1,099,609	1,316,317	989,160	756,838	1,362,117	5,861,627	

FY 2011 - Sewer Revenue

ACCOUNT#	DESCRIPTION	BUDGET	July '10	Aug '10	Sept '10	Oct '10	Nov '10	Dec '10	Year to Date	Percentage YTD
03-40016	Sales - Establish Service Fee	0	0	0	25	0	0	0	25	
03-41000	Sales - Sewer Charges	10,100,000	301,895	855,921	875,569	852,545	846,296	843,691	4,575,918	45.31%
03-41005	Sales Disc-Multi Units Service Chrg.	(215,000)	(6,155)	(16,570)	(16,623)	(16,606)	(16,551)	(16,591)	(89,096)	41.44%
03-41110	Meter/Lateral Installation	0	0	0	1,900	0	0	0	1,900	
03-41121	Penalty Late Charges	140,000	11,064	10,740	9,769	11,766	11,509	11,181	66,027	47.16%
03-41124	Bad Debt	0	0	0	0	0	0	0	0	
03-41131	Front Footage Fees	0	0	0	27,395	0	0	0	27,395	
03-42122	Revenue - other operating	1,000	0	0	360	0	180	180	720	72.00%
03-43010	Interest Earned	45,000	0	159	273	597	0	0	1,029	2.29%
03-43110	Property Tax - Unsecured	50,000	0	0	0	0	0	50,000	50,000	100.00%
03-43120	Property Tax - Secured	250,000	0	0	0	0	0	250,000	250,000	100.00%
03-43130	Tax Collection - Prior	20,000	0	0	0	0	0	10,000	10,000	50.00%
03-43140	Other Taxes	1,500	0	0	0	0	0	1,500	1,500	100.00%
03-49150	Misc. Non-Oper Revenue	2,000	0	0	0	0	0	0	0	0.00%
	SEWER OPERATING REVENUE	10,394,500	306,803	850,250	898,667	848,301	841,434	1,149,962	4,895,417	47.10%
03-82003	Grants - ARRA	0	0	0	0	242,258	126,603	117,256	486,117	
03-82004	Grants - Prop 50	0	0	0	0	0	917,389	296,863	1,214,252	
03-89901	Facility Capacity Charges	0	0	0	17,755	0	0	7,891	25,646	
	TOTAL SEWER REVENUE	10,394,500	306,803	850,250	916,422	1,090,559	1,885,426	1,571,972	6,621,432	

FY 2011 - Recycled Revenue

ACCOUNT#	Description	BUDGET	July '10	Aug '10	Sept '10	Oct '10	Nov '10	Dec '10	Year to Date	Percentage YTD
04-40010	Sales - Recycled Water	365,000	14,751	60,306	80,862	46,064	18,815	18,603	239,431	65.60%
04-40011	Sales - Construction Water	9,000	246	597	73	80	25	188	1,209	13.43%
04-41000	Sales - Service Demand Chrg.	26,000	834	2,277	2,505	2,424	2,131	2,433	12,605	48.48%
04-41003	Const. Water Minimum Chrg.	4,000	107	258	294	285	258	327	1,528	38.20%
04-41110	Meter/Lateral installation	0	0	0	0	0	0	0	0	
04-41121	Penalty - Late Charge	775	24	11	7	7	21	6	76	9.76%
04-43010	Interest Earned	0	0	0	0	0	64	0	64	
04-43110	Property Tax - Unsecured	500	0	0	0	0	0	500	500	100.00%
04-43120	Property Tax - Secured	6,000	0	0	0	0	0	6,000	6,000	100.00%
04-49150	Misc. Non-Operating Revenue	0	0	0	0	0	0	0	0	
	RECYCLED OPERATING REVENUE	411,275	15,992	63,448	83,742	48,861	21,314	28,055	261,413	63.56%
04-89901	Facility Capacity Charges	0	0	0	0	0	0	5,467	5,467	
	TOTAL RECYCLED REVENUE	411,275	15,992	63,448	83,742	48,861	21,314	33,522	266,880	

FY 2011 - Water Expenses

ACCOUNT#	DESCRIPTION	BUDGET	July '10	Aug '10	Sept '10	Oct '10	Nov '10	Dec '10	Year to Date	Percentage YTD
02-5-01-50010	Labor-Water Resources	644,500	51,237	47,592	50,508	43,582	40,151	70,150	303,220	47.05%
02-5-01-50011	Labor Credit	0	0	0	0	0	0	0	0	
02-5-01-50013	Benefits-Fica	52,000	4,136	3,880	4,085	3,576	3,292	5,424	24,393	46.91%
02-5-01-50014	Benefits-Life Insurance	3,420	264	270	270	276	214	235	1,529	44.71%
02-5-01-50016	Benefits-Health/Defrd Comp	90,720	8,439	8,655	8,671	8,674	7,062	8,520	50,021	55.14%
02-5-01-50017	Benefits-Disability Insurance	9,300	848	818	849	773	627	988	4,853	52.18%
02-5-01-50019	Benefits-Workers Compensation	34,000	2,650	147	0	0	6,275	3,481	14,553	42.80%
02-5-01-50021	Benefits-PERS	45,000	2,811	3,141	3,075	2,812	2,854	4,215	18,707	41.57%
02-5-01-50022	Benefits-PERS-Employer	78,500	5,134	5,709	5,589	5,112	4,821	7,663	34,029	43.35%
02-5-01-50023	Benefits-Uniforms	2,500	217	174	195	156	161	168	1,070	42.81%
02-5-01-50024	Benefits-Vacation & Sick Pay	3,600	339	554	339	611	680	888	3,420	94.99%
02-5-01-50025	Benefits-Boot Allowance	1,575	150	0	0	150	375	(75)	600	38.10%
02-5-01-51003	R&M - Structures	215,000	4,974	17,851	13,157	11,817	29,905	465	78,169	36.36%
02-5-01-51011	R&M - CLA Valves	15,000	0	0	104	639	0	0	743	4.96%
02-5-01-51140	General Supplies & Expenses	1,500	0	43	28	0	841	160	1,073	71.54%
02-5-01-51210	Utilities - Power Purchases	1,405,000	203,003	208,075	187,808	118,542	84,808	28,558	830,795	59.13%
02-5-01-51211	Utilities - Electricity & Fuel	4,000	394	418	441	344	321	29	1,948	48.70%
02-5-01-51316	Imported Water Purchases	800,000	45,959	186,164	104,310	116,824	90,494	42,113	585,864	73.23%
02-5-01-54019	Licenses & Permits	22,000	576	1,728	798	0	1,207	804	12,296	55.89%
02-5-01-54110	Laboratory Services	90,000	300	5,420	11,060	2,955	2,856	2,540	24,931	27.70%
02-5-01-57040	YVRWFF Operating Expense	700,000	58,630	37,248	41,844	34,885	59,181	3,397	235,185	33.60%
	WATER RESOURCE TOTALS	4,217,615	390,069	527,887	440,312	351,750	337,737	179,675	2,227,400	52.81%
02-5-03-50010	Labor-Public Works	827,730	55,860	62,450	64,803	61,919	65,018	96,516	408,565	49.36%
02-5-03-50011	Labor Credit	0	0	(410)	(10,314)	(1,884)	0	0	(12,608)	
02-5-03-50013	Benefits-Fica	67,500	4,532	5,062	5,247	5,008	5,248	7,977	33,075	49.00%
02-5-03-50014	Benefits-Life Insurance	5,750	419	426	426	426	426	419	2,541	44.18%
02-5-03-50016	Benefits-Health/Defrd Comp	136,240	11,654	14,803	13,650	14,828	14,829	15,100	84,864	61.39%
02-5-03-50017	Benefits-Disability Insurance	15,100	981	1,089	1,095	1,061	1,095	1,408	6,708	44.42%
02-5-03-50019	Benefits-Workers Compensation	34,000	2,602	247	0	0	8,888	3,800	15,537	45.70%
02-5-03-50021	Benefits-PERS	58,600	3,657	4,024	4,086	4,086	4,156	6,128	26,136	44.60%
02-5-03-50022	Benefits-PERS-Employer	102,300	6,679	7,315	7,427	7,427	7,549	11,141	47,538	46.47%
02-5-03-50024	Benefits-Uniforms	4,900	418	335	1,188	333	338	357	2,970	60.61%
02-5-03-50025	Benefits-Vacation & Sick Pay	3,000	193	193	193	0	0	387	967	32.22%
02-5-03-50025	Benefits-Boot Allowance	2,400	0	431	0	442	150	150	1,172	48.85%
02-5-03-51001	R & M-Vehicles & Equipment	195,000	9,533	15,194	9,572	15,789	16,888	11,045	77,822	39.91%
02-5-03-51011	R&M - Valves	10,000	0	636	3,154	0	0	0	3,790	37.90%
02-5-03-51020	R&M - Pipelines	260,000	19,118	55,449	10,727	14,406	12,349	11,972	124,021	47.70%
02-5-03-51021	R&M - Service Lines	135,000	2,809	6,085	7,329	4,638	7,019	5,160	33,040	24.47%
02-5-03-51022	R&M - Fire Hydrants	25,000	130	132	0	1,044	1,623	946	3,875	15.50%
02-5-03-51030	R&M - Water Meters	130,000	5,048	10,797	2,022	2,263	815	2,559	23,504	18.08%
02-5-03-51092	Equipment Credits	0	0	(50)	(4,972)	(1,114)	(5)	0	(6,141)	
02-5-03-51140	General Supplies & Expenses	2,480	0	8	121	26	0	0	155	6.24%
	PUBLIC WORKS TOTALS	2,017,000	123,633	183,559	113,236	133,852	146,186	177,064	877,529	43.51%

FY 2011 - Water Expenses

ACCOUNT#	DESCRIPTION	BUDGET	July '10	Aug '10	Sept '10	Oct '10	Nov '10	Dec '10	Year to Date	Percentage YTD
02-5-06-50010	Labor-Administration	702,850	47,588	52,392	52,309	63,754	49,345	72,839	338,015	48.08%
02-5-06-50011	Labor Credit	0	0	0	0	4	(1,320)	0	(1,316)	
02-5-06-50012	Director Fees	14,000	0	1,641	1,084	1,216	1,155	1,459	6,564	46.89%
02-5-06-50013	Benefits-Fica	56,200	3,703	4,067	4,030	4,899	3,767	4,944	25,410	45.21%
02-5-06-50014	Benefits-Life Insurance	4,250	308	319	319	319	291	284	1,842	43.34%
02-5-06-50016	Benefits-Health/Defr/Comp	152,100	9,899	12,371	12,302	12,151	11,892	12,505	71,119	46.76%
02-5-06-50017	Benefits-Disability Insurance	9,500	735	786	787	838	853	768	4,568	48.07%
02-5-06-50019	Benefits-Workers Compensation	25,700	1,300	1,47	0	0	5,594	1,800	8,841	34.40%
02-5-06-50021	Benefits-PERS	49,200	3,229	3,626	3,628	3,518	3,440	5,015	22,455	45.64%
02-5-06-50022	Benefits-PERS Employer	85,800	5,894	6,592	6,592	6,395	6,260	9,117	40,851	47.61%
02-5-06-50023	Uniforms	1,500	137	110	155	108	109	114	732	48.80%
02-5-06-50024	Benefits-Vacation & Sick Pay	11,500	1,208	715	864	635	608	1,048	5,077	44.15%
02-5-06-50025	Benefits-Boots	1,500	131	0	150	0	147	75	503	33.53%
02-5-06-51003	R&M - Structures	15,000	1,544	2,344	984	442	435	471	6,201	41.34%
02-5-06-51091	Expense Credits (overhead)	0	0	(45)	(305)	(57)	0	0	(793)	
02-5-06-51120	Safety Equipment/Supplies	10,000	102	847	2,751	1,102	1,441	283	6,507	65.07%
02-5-06-51125	Petroleum Products	100,000	10,727	9,297	8,264	7,491	8,917	4,785	49,481	49.48%
02-5-06-51130	Office Supplies & Expenses	40,000	2,145	3,631	4,636	1,018	1,215	1,729	14,377	35.94%
02-5-06-51140	General Supplies & Expenses	30,000	1,573	305	4,344	3,417	843	793	11,375	37.92%
02-5-06-51199	Disaster Incidences	500	500	0	9,223	150	1,001	4,718	15,590	
02-5-06-51211	Utilities - Electricity	25,000	3,532	3,846	3,439	1,867	1,768	175	14,628	58.51%
02-5-06-51213	Utilities - Natural Gas	5,000	38	35	40	104	272	485	974	19.48%
02-5-06-54002	Dues & Subscriptions	20,000	82	0	20	0	520	0	622	3.11%
02-5-06-54005	Computer Expenses	150,000	10,966	6,328	911	2,436	10,096	143	30,880	20.59%
02-5-06-54010	Postage	7,500	79	62	29	50	78	17	314	4.19%
02-5-06-54011	Printing & Publications	20,000	1,728	4,212	0	81	0	6,022	30,116	150.58%
02-5-06-54012	Education & Training	30,000	4,237	4,315	3,324	2,186	2,975	1,874	18,720	62.40%
02-5-06-54013	Utility Billing Expenses	125,000	10,342	11,172	10,989	10,870	11,079	6,082	60,494	48.40%
02-5-06-54014	Public Relations	10,000	1,252	806	855	422	33	326	3,694	36.94%
02-5-06-54015	Rents & Leases	3,500	392	197	392	197	197	197	1,571	44.89%
02-5-06-54016	Travel Related Expenses	15,000	2,007	1,117	791	110	1,149	136	5,309	35.40%
02-5-06-54017	Certifications & Renewals	6,000	355	221	330	314	55	0	1,275	21.25%
02-5-06-54020	Meeting Expenses	4,000	0	66	1,049	209	368	21	1,794	43.35%
02-5-06-54021	Disaster Preparedness Training	0	0	0	178	0	250	0	428	
02-5-06-54024	Utilities - Waste Disposal	3,000	157	157	157	157	157	0	784	26.13%
02-5-06-54025	Utilities - Telephone	38,000	2,844	3,257	2,537	2,798	4,048	1,483	16,947	44.80%
02-5-06-54104	Contractual Services	80,000	18,989	2,395	4,904	2,879	1,866	1,401	32,435	40.54%
02-5-06-54107	Legal	60,000	1,845	2,334	2,521	1,823	4,928	0	13,450	22.42%
02-5-06-54108	Audit & Accounting	16,000	0	6,500	2,850	1,216	0	0	10,566	66.03%
02-5-06-54109	Professional Fees	160,000	7,078	8,452	14,119	13,994	8,003	2,680	54,325	33.95%
02-5-06-55500	Depreciation Reserves	699,976	58,331	58,331	58,331	58,331	58,331	58,331	349,988	50.00%
02-5-06-56001	Insurance	115,000	9,202	9,202	9,202	9,202	9,202	9,202	55,212	48.01%
02-5-06-57030	Regulatory Compliance	62,500	0	0	0	0	0	0	0	0.00%
02-5-06-57050	Uncollectible Accounts	0	0	0	0	0	0	0	0	
02-5-06-57090	Election Related Expense	15,000	0	0	0	0	0	0	0	0.00%
02-5-06-57096	Beaumont Basin Watermaster	5,500	0	0	6,000	0	0	0	6,000	109.09%
02-5-06-57100	County Tax Collector Fees	7,500	0	13	0	39	233	2,855	2,971	39.61%
02-5-06-57199	Suspense	0	406	87	0	0	0	0	493	
ADMINISTRATION TOTALS		2,992,576	224,595	222,272	235,058	216,342	211,445	207,202	1,316,915	44.01%

FY 2011 - Water Expenses

ACCOUNT#	DESCRIPTION	BUDGET	July '10	Aug '10	Sept '10	Oct '10	Nov '10	Dec '10	Year to Date	Percentage YTD
02-5-40-57201	Debt Srv.-Series 2004A Princ.(25009)	885,000	0	885,000	0	0	0	0	885,000	100.00%
02-5-40-57402	Interest-Long-Term Debt Bonds	2,046,219	0	1,031,406	0	0	0	0	1,031,406	50.41%
02-5-40-57806	Rate Stabilization Fund	75,000	0	0	0	0	0	0	0	0.00%
02-5-40-57001	Asset Acq. - Water Resources	30,000	0	0	0	0	0	0	0	0.00%
02-5-40-57003	Asset Acq. - Utility Service	140,000	0	0	0	0	0	0	0	0.00%
02-5-40-57006	Asset Acq. - Administration	0	0	0	0	0	0	0	0	
	40 - Debt & Capital Outlay	3,176,219	0	1,916,406	0	0	0	0	1,916,406	60.34%
	TOTAL WATER EXPENSES	12,403,410	738,287	2,850,124	788,606	701,924	695,368	563,941	6,338,251	51.10%

FY 2011 - Sewer Expenses

ACCOUNT#	DESCRIPTION	BUDGET	July '10	Aug '10	Sept '10	Oct '10	Nov '10	Dec '10	Year to Date	Percentage YTD
03-5-02-50010	Labor-VW Treatment	747,000	48,425	60,738	62,557	61,984	59,684	96,507	389,894	52.19%
03-5-02-50013	Benefits-Fica	62,900	4,001	5,070	5,227	5,174	4,971	7,692	32,135	51.09%
03-5-02-50014	Benefits-Life Insurance	4,150	321	327	327	331	329	319	1,953	47.07%
03-5-02-50016	Benefits-Health/Defrd Comp	135,800	9,216	11,261	11,461	11,343	11,312	13,086	67,679	49.84%
03-5-02-50017	Benefits-Disability Insurance	12,800	887	1,043	1,066	1,057	980	1,311	6,345	49.57%
03-5-02-50019	Benefits-Workers Compensation	31,475	2,500	147	0	0	8,275	3,481	14,403	45.76%
03-5-02-50021	Benefits-PERS	52,300	3,627	4,053	4,067	4,046	3,913	6,066	25,772	49.28%
03-5-02-50022	Benefits-PERS Employer	91,300	6,625	7,367	7,393	7,355	7,109	11,027	46,878	51.34%
03-5-02-50023	Benefits-Uniforms	3,300	346	263	361	272	257	277	1,777	53.86%
03-5-02-50024	Benefits-Vacation & Sick Pay	6,400	384	384	384	395	390	718	2,655	41.49%
03-5-02-50025	Benefits-Boot Allowance	1,725	0	0	0	0	375	0	375	21.74%
03-5-02-51003	R&M - Structures	200,000	31,822	9,089	14,566	14,506	1,180	4,922	76,107	38.05%
03-5-02-51010	R&M - Automation Control	50,000	0	2,968	6,939	14,544	1,000	5,329	30,781	61.56%
03-5-02-51106	Chemicals	500,000	33,339	50,466	45,599	45,230	46,637	23,976	245,248	49.05%
03-5-02-51111	Propane	10,000	0	0	0	0	0	1,769	1,769	17.69%
03-5-02-51115	Laboratory Supplies	32,000	3,916	1,216	1,831	3,179	1,518	2,381	14,042	43.88%
03-5-02-51140	General Supplies & Expenses	1,000	141	0	0	0	581	0	723	72.26%
03-5-02-51210	Utilities - Power Purchases	675,000	80,769	81,188	68,717	55,405	49,606	25,460	361,145	53.50%
03-5-02-54110	Laboratory Services	115,000	5,613	13,007	8,462	5,802	10,427	6,559	49,871	43.37%
03-5-02-57031	Sludge Disposal	280,000	26,008	23,848	24,678	22,627	24,553	0	121,715	43.47%
03-5-02-57033	Brine Disposal	26,000	0	0	2,710	2,710	2,710	0	8,130	31.27%
	TREATMENT TOTALS	3,038,150	257,940	272,436	266,365	255,964	235,808	210,882	1,499,395	49.35%

FY 2011 Sewer Expenses

ACCOUNT#	DESCRIPTION	BUDGET	July '10	Aug '10	Sept '10	Oct '10	Nov '10	Dec '10	Year to Date	Percentage YTD
03-5-06-50010	Labor-Administration	655,050	42,149	48,761	48,677	60,102	45,714	67,192	312,595	47.72%
03-5-06-50012	Directors Fees	15,000	0	1,641	1,094	1,216	1,155	1,459	6,564	43.76%
03-5-06-50013	Benefits-Fica	59,500	3,254	3,776	3,739	4,615	3,476	4,496	23,355	39.25%
03-5-06-50014	Benefits-Life Insurance	4,200	311	320	320	320	292	295	1,847	43.98%
03-5-06-50016	Benefits-HealthDefrd Comp	155,400	9,578	12,241	12,207	12,020	11,761	13,679	71,487	46.00%
03-5-06-50017	Benefits-Disability Insurance	10,600	673	744	745	844	612	700	4,318	40.73%
03-5-06-50019	Benefits-Workers Compensation	22,000	2,000	147	0	0	6,794	3,000	11,941	54.28%
03-5-06-50021	Benefits-PERS	48,300	3,001	3,372	3,370	3,264	3,186	4,634	20,827	43.12%
03-5-06-50022	Benefits PERS Employer	83,900	5,478	6,130	6,126	5,933	5,798	8,424	37,890	45.16%
03-5-06-50023	Benefits-Uniforms	1,000	86	69	69	74	77	81	456	45.61%
03-5-06-50024	Benefits-Vacation & Sick Pay	11,500	1,208	715	864	635	608	1,048	5,077	44.15%
03-5-06-50025	Benefits-Boot Allowance	1,400	0	0	0	0	0	0	0	0.00%
03-5-06-51120	Safety Equipment/Supplies	7,500	0	0	542	38	666	459	1,705	22.73%
03-5-06-51125	Petroleum Products	15,000	5,102	1,000	1,000	1,000	1,000	1,000	10,102	67.34%
03-5-06-51130	Office Supplies	6,000	0	0	370	58	69	21	518	8.63%
03-5-06-51140	General Supplies & Expenses	7,500	57	93	335	3,177	747	82	4,492	59.89%
03-5-06-54002	Dues & Subscriptions	10,000	0	0	618	441	547	0	1,606	16.06%
03-5-06-54003	Management & Admin Services	593,310	49,443	49,443	49,443	49,443	49,443	49,443	296,655	50.00%
03-5-06-54005	Computer Expenses	45,000	10,821	4,928	911	1,854	7,718	143	26,376	58.61%
03-5-06-54011	Printing & Publications	4,000	1,729	4,650	0	81	0	0	6,460	161.50%
03-5-06-54012	Education & Training	20,000	1,050	2,809	281	1,230	260	1,674	7,304	36.52%
03-5-06-54014	Public Relations	10,000	1,252	806	342	184	33	206	2,823	28.23%
03-5-06-54016	Travel Related Expenses	10,000	36	415	292	1,504	475	118	2,839	28.39%
03-5-06-54017	Certifications & Renewals	5,500	506	0	150	50	530	19	1,255	22.81%
03-5-06-54019	Licenses & Permits	40,000	1,789	0	4,134	3,513	28,222	4,534	42,191	105.48%
03-5-06-54020	Meeting Related Expenses	1,000	0	26	833	114	268	21	1,262	126.20%
03-5-06-54021	Disaster Preparedness Training	0	0	0	172	0	250	0	422	
03-5-06-54024	Utilities - Waste Disposal	10,000	934	934	934	3,156	834	0	6,892	68.92%
03-5-06-54025	Utilities - Telephone	17,000	1,088	1,245	1,090	1,088	2,669	958	8,137	47.87%
03-5-06-54030	Drinking Water	1,000	56	126	119	70	49	35	455	45.50%
03-5-06-54104	Contractual Services	25,000	11,637	1,124	1,502	1,321	2,418	546	18,548	74.19%
03-5-06-54107	Legal	45,000	1,585	3,082	4,114	2,803	4,115	0	15,498	34.44%
03-5-06-54108	Audit & Accounting	14,000	0	6,500	2,850	1,216	0	0	10,566	75.47%
03-5-06-54109	Professional Fees	300,000	28,298	34,896	31,823	30,424	12,958	2,845	141,243	47.08%
03-5-06-55500	Depreciation Reserves	1,191,120	99,260	99,260	99,260	99,260	99,260	99,260	595,560	50.00%
03-5-06-56001	Insurance	115,000	9,202	9,202	9,202	9,202	9,202	9,202	55,212	48.01%
03-5-06-57030	Regulatory Compliance	65,000	27,577	22	33,995	0	0	0	61,593	94.76%
03-5-06-57050	Uncollectible Accounts	0	0	0	0	0	0	0	0	
03-5-06-57100	County Tax Collection Fees	250	49	0	0	0	0	0	49	19.60%
ADMINISTRATION TOTALS		3,626,030	319,208	298,476	321,522	300,048	301,303	275,562	1,816,119	50.09%

FY 2011 - Sewer Expenses

ACCOUNT#	DESCRIPTION	BUDGET	July '10	Aug '10	Sept '10	Oct '10	Nov '10	Dec '10	Year to Date	Percentage YTD
03-5-07-50010	Labor-Environmental Control	217,740	15,615	17,073	17,352	17,101	17,562	23,267	107,970	49.59%
03-5-07-50011	Labor Credit	0	0	0	0	0	0	0	0	
03-5-07-50013	Benefits-Fica	20,100	1,262	1,358	1,378	1,339	1,375	1,839	8,550	42.54%
03-5-07-50014	Benefits-Life Insurance	1,625	111	114	114	114	114	83	649	39.91%
03-5-07-50016	Benefits-Health/Defid Comp	50,100	3,679	3,930	3,930	3,687	4,173	3,807	23,208	46.32%
03-5-07-50017	Benefits-Disability Insurance	4,025	267	285	288	263	288	341	1,752	43.53%
03-5-07-50019	Benefits-Workers Compensation	7,350	750	147	0	0	5,794	2,000	8,691	118.24%
03-5-07-50021	Benefits-PERS	15,200	962	1,074	1,074	1,074	1,095	1,407	6,686	43.99%
03-5-07-50022	Benefits-PERS Employer	26,500	1,756	1,953	1,953	1,953	1,988	2,558	12,161	45.89%
03-5-07-50023	Benefits-Uniforms	1,200	115	92	115	86	85	88	582	48.48%
03-5-07-50024	Benefits-Vacation & Sick Pay	0	0	0	0	0	0	0	0	
03-5-07-50025	Benefits-Boot Allowance	600	0	0	0	0	150	0	150	25.00%
03-5-07-51003	R&M - Structures	300,000	31,144	22,195	24	17,586	8,281	1,511	80,740	26.91%
03-5-07-51140	General Supplies & Expenses	1,000	0	94	155	0	0	0	250	24.98%
03-5-07-51241	Lift Station #1	70,000	20,128	5,818	6,632	4,092	3,275	1,694	41,641	59.49%
03-5-07-51242	Lift Station #2	11,000	1,550	703	696	631	710	267	4,555	41.41%
03-5-07-51243	Lift Station #3	5,000	591	231	251	916	173	65	2,228	44.55%
03-5-07-51244	Lift Station #4	12,500	9,920	1,058	1,403	369	996	361	14,107	112.85%
03-5-07-51245	Lift Station #5	3,000	110	121	128	0	107	8	472	15.74%
03-5-07-51248	Lift Station #8	2,500	101	98	111	94	96	3	502	20.09%
03-5-07-54109	Professional Fees	35,000	3,809	5,435	0	4,200	5,981	0	19,424	55.50%
03-5-07-54110	Laboratory Services	2,500	0	0	0	0	0	0	0	0.00%
	ENVIRONMENTAL CONTROL TOTAL	786,940	91,868	61,776	35,604	53,525	52,242	39,300	334,316	42.48%
03-5-40-57202	Debt Service - Principal	1,863,070	0	0	1,863,069	0	0	0	1,863,069	100.00%
03-5-40-57403	Debt Service - Interest	1,060,600	0	0	1,060,600	0	0	0	1,060,600	100.00%
03-5-40-57002	Asset Acq - Treatment		0	0	0	5,817	0	221	6,038	
03-5-40-57006	Asset Acq - Administration		0	0	0	0	0	0	0	
03-5-40-57007	Asset Acq - Environmental Control		0	0	0	0	0	0	0	
03-5-40-57009	Plant Support (03-13105 Sari Line)	19,710	0	0	0	0	0	0	0	0.00%
	Debt & Capital Outlay	2,943,350	0	0	2,923,669	5,817	0	221	2,929,707	99.54%
	TOTAL SEWER EXPENSES	10,394,500	669,016	632,688	3,547,160	615,354	589,363	525,965	6,579,536	63.30%

FY 2011 - Recycled Expenses

ACCOUNT#	Description	BUDGET	July '10	Aug '10	Sept '10	Oct '10	Nov '10	Dec '10	Year to Date	Percentage YTD
04-5-06-50010	Labor-Recycled Water	81,500	5,462	6,208	6,208	6,208	6,208	10,863	41,156	50.50%
04-5-06-50012	Director Fees	0	0	0	0	0	0	0	0	
04-5-06-50013	Benefits-FICA	5,975	497	551	551	551	551	949	3,649	61.08%
04-5-06-50014	Benefits-Life Insurance	335	28	28	28	28	28	28	169	50.45%
04-5-06-50016	Benefits-Health & Def Comp	17,145	1,481	1,570	1,570	1,570	1,570	1,996	9,758	56.92%
04-5-06-50017	Benefits-Disability Insurance	1,030	100	108	108	108	108	144	676	65.66%
04-5-06-50019	Benefits-Workers Compensation	2,240	200	47	0	0	1,000	500	1,747	77.99%
04-5-06-50021	Benefits-PERS Employee	5,265	389	435	435	435	435	652	2,779	52.78%
04-5-06-50022	Benefits-PERS Employer	9,180	710	790	790	790	790	1,185	5,055	55.06%
04-5-06-50023	Benefits-Uniforms	280	0	0	0	0	0	0	0	0.00%
04-5-06-50024	Benefits-Vacation & Sick Pay	1,400	233	155	155	155	155	233	1,086	77.60%
04-5-06-50025	Benefits-Boots	150	0	0	0	0	0	0	0	0.00%
04-5-06-51003	R & M-Structures	8,500	0	0	400	0	1,048	0	1,448	17.03%
04-5-06-51020	R & M-Pipelines	0	0	0	46	0	0	0	46	
04-5-06-51021	R & M-Service Lines	0	0	0	0	0	0	0	0	
04-5-06-51022	R & M-Fire Hydrants	1,000	0	2,943	(2,957)	0	0	0	(14)	-1.35%
04-5-06-51030	R & M-Meters	250	0	0	0	0	0	0	0	0.00%
04-5-06-51140	General Supplies & Expenses	150	57	0	0	0	0	0	57	38.04%
04-5-06-51316	Imported Water Purchases	140,000	24,929	24,341	22,971	11,505	8,992	5,076	97,813	69.87%
04-5-06-54002	Dues & Subscriptions	1,500	0	0	0	0	0	0	0	0.00%
04-5-06-54005	Computer Expense	2,000	0	1,167	0	0	0	0	1,167	58.33%
04-5-06-54011	Printing & Publications	75	0	0	0	0	0	0	0	0.00%
04-5-06-54012	Education & Training	2,500	0	65	43	0	0	0	108	4.33%
04-5-06-54014	Public Relations	2,000	1,252	806	0	184	0	0	2,242	112.11%
04-5-06-54016	Travel Related Expenses	1,500	0	0	0	0	0	0	0	0.00%
04-5-06-54019	Licenses & Permits	0	0	0	0	0	0	0	0	
04-5-06-54020	Meeting Expenses	0	0	0	325	0	0	0	325	
04-5-06-54025	Telephone	600	55	55	55	55	58	0	278	46.39%
04-5-06-54010	Contractual Services	2,400	0	0	0	25	0	0	25	1.04%
04-5-06-54107	Legal	0	7,443	7,934	8,136	5,938	4,908	0	34,359	
04-5-06-54109	Professional Fees	10,000	0	0	0	0	0	0	0	0.00%
04-5-06-55500	Depreciation	114,300	9,525	9,525	9,525	9,525	9,525	9,525	57,150	50.00%
04-5-06-57010	County Tax Collection Fees	0	0	0	0	0	0	0	0	
04-5-06-57030	Regulatory Compliance	0	0	0	0	0	0	0	0	
04-5-06-57040	Environmental Compliance	0	0	0	0	0	0	0	0	
	TOTAL RECYCLED EXPENSES	411,275	52,360	56,728	48,391	37,077	35,375	31,149	261,080	63.45%



Date: January 11, 2011

Subject: Discussion Regarding Pretreatment Discharge Permit No. CP-003-03 for Hoover Egg Company, Yucaipa

On September 15, 2010, the Board of Directors approved the Class III Non-Significant Industrial User Discharge Permit for Hoover Egg Company authorizing the discharge of industrial wastewater from their facility to the District's sewer system. The permit delineated the discharge limitations, monitoring requirements, and other conditions to comply with the District Pretreatment Program.

Recently the company changed from Hoover Egg / Hidden Villa Ranch to Hoover Egg Company. As a result of this change, the District must issue a new permit. Other than the company name and date of permit, there were no other changes to the permit conditions.



Yucaipa Valley Water District

Workshop Memorandum 11-008

Date: January 11, 2011

Subject: Discussion Regarding the Investment Policy of the Yucaipa Valley Water District

Each year the District reviews our investment policy to determine if any changes or modifications are necessary. The proposed policy is attached for your review.



Yucaipa Valley Water District

Director Memorandum 11-0xx

Date: January 19, 2011 **Job:** Not Applicable
Prepared By: Vicky Elisalda, Controller **G/L:** Not Applicable
Subject: Adoption of Resolution No. 0x-2011 Approving an Investment Policy and Appointment of the General Manager as the District Investment Officer
Recommendation: That the Board adopts Resolution No. 0x-2011.

The attached investment policy has been prepared pursuant to statutory provisions of the Government Code established to direct the deposit, investment and reporting of public funds.

The attached policy was presented and discussed at the board workshop on January 11, 2011.

RESOLUTION NO. 03-2011

**A RESOLUTION OF THE YUCAIPA VALLEY WATER DISTRICT
APPROVING AN INVESTMENT POLICY AND
APPOINTMENT OF THE GENERAL MANAGER
AS THE DISTRICT INVESTMENT OFFICER**

WHEREAS, California Government Code, Section 53646, requires the annual adoption of an investment policy.

NOW, THEREFORE, the Yucaipa Valley Water District hereby resolves as follows:

Section 1: Adoption of Investment Policy.

Pursuant to Government Code 53600 et seq., the "Yucaipa Valley Water District Statement of Investment Policy" is hereby approved as attached hereto and incorporated herein by this reference.

Section 2: Appointment of Investment Officer.

The General Manager of the District is hereby appointed as the District's Investment Officer and is authorized and directed to do all things necessary to implement the Investment Policy.

PASSED AND ADOPTED this 19th day of January 2011.

YUCAIPA VALLEY WATER DISTRICT

By _____
President of the Board



Yucaipa Valley Water District

STATEMENT OF INVESTMENT POLICY

January 19, 2011

INTRODUCTION

The purpose of this policy is to provide broad guidelines to the District Investment Officer, who is charged with the responsibility for the investment of funds for the District. All investments by the District shall be governed by State law and by this policy.

The District Investment Officer is responsible for administering the District's investments. In furtherance of this responsibility, the District Investment Officer shall issue and administer detailed Investment Instructions which may change periodically and which will implement this Investment Policy. The investment of bond proceeds will be further restricted by the provisions of relevant bond documents.

POLICY GUIDELINES

1) Prudence

The standard of prudence to be used by the District Investment Officer shall be the "prudent person" standard and shall be applied in the context of managing an overall portfolio. All persons investing, reinvesting, purchasing, acquiring, exchanging, selling, and managing public funds shall act with care, skill, prudence and diligence in order to safeguard the principal amount of the investments and maintain the liquidity needs of the District.

2) Objectives

The primary objectives, in priority order, of the District's investment activities shall be:

- A. Safety of Principal. The investments shall be undertaken in a manner that seeks to ensure preservation of capital in the portfolio.
- B. Liquidity. The investment portfolio will remain sufficiently liquid to enable the District to meet its cash flow requirements.
- C. Return on Investment. The investment portfolio shall be designed with the objective of attaining a market rate of return on its investments consistent with the constraints imposed by its safety objective and cash flow requirements.

3) Delegation of Authority

The management and oversight responsibility for the investment program is hereby delegated to the District Investment Officer who shall monitor and review all investments for consistency with this investment policy. No person may engage in an investment transaction except as provided under the limits of this policy. The District Investment Officer shall maintain investment instructions for internal and external management of investments consistent with State

Government Code requirements. The District may contract for the use of investment manager services subject to all other provisions of this Investment Policy. The District Investment Officer shall maintain a list of authorized broker/dealers and financial institutions that are approved for investment purposes, and it shall be the policy of the District to purchase securities only from those authorized institutions or firms.

4) Investment Oversight Committee

There is hereby established an Investment Oversight Committee, which shall consist of the Investment Officer, the District's Controller and two members of the Board of Directors who are also members of the Board's Finance Committee.

It shall be the responsibility of the Committee to:

- A. Review changes in investment practices of the Investment Officer for compliance with the Investment Policy and investment transaction instructions and procedures;
- B. Review the District's monthly Unaudited Financial Report for adherence to this Investment Policy and investment instructions and procedures in the event that said Report is not presented at a workshop of the Board; and
- C. Advise the Board of Directors of any deviations from an Investment Policy or any investment instructions or procedures which are deemed imprudent.

To maintain full financial transparency of the District's operations, an unaudited financial report will be provided monthly to all members of the Board of Directors at a workshop meeting prior to being presented at a board meeting. The presentation of the monthly financial report shall be the preferred mechanism to be used to provide all financial information to the entire Board instead of just the members of the Investment Oversight Committee.

5) Ethics and Conflict of Interest

Officers and employees involved in the investment process shall refrain from personal business activities that could conflict with proper execution of the investment program, or which could impair their ability to make impartial decisions. Officers and employees involved in the investment process shall abide by the District's Conflict of Interest Code, California Government Code, Section 1090 and the California Political Reform Act.

6) Authorized and Acceptable Investments

Government Code, Section 53601 sets forth the eligible investments for the District. All investments purchased for the District shall be delivered, either by book entry or physical delivery, to the District's third party custodian. All investments of the District shall have the Yucaipa Valley Water District as registered owner.

- A. As to the District's surplus funds generally (excluding funds from bond proceeds), the District's Investment Officer is authorized to invest such funds as follows:
 1. Local Agency Investment Fund - The District Investment Officer may invest in the Local Agency Investment Fund (LAIF) established by the State Treasurer for the benefit of local agencies. There is no minimum investment period and the minimum transaction is \$5,000, in multiples of \$1,000 above that, with a maximum of \$30 million for any agency. The

LAIF offers high liquidity because deposits can be converted to cash in 24 hours and no interest is lost. All interest is distributed to those agencies participating on a proportionate share.

2. Passbook Savings Accounts and Demand Deposit Accounts - For purposes of this policy, passbook savings accounts and demand deposit accounts and bank money-market accounts shall be considered appropriate investments. The District may earn interest on idle funds in such accounts at a federally-insured institution.
 3. United States Government Securities - U.S. Treasury Bills, Notes, Bonds and Certificates of Indebtedness, or those for which the full faith and credit of the United States are pledged for payment of principal and interest and are not subject to any limitations. Since this investment category is considered to be extremely safe and liquid, there is no limitation as to the percentage of the District's portfolio that can be invested in these types of investments.
- B. As to the District's bond proceeds, and subject to the Board's approval, such proceeds may be invested by the District Investment Officer in the following investments authorized under California Government Code, Sections 53601, 53635 and 53635.2:
1. United States Treasury notes, bonds, bills or certificates of indebtedness or other obligations for which the full faith and credit of the United States are pledged for the payment of principal and interest;
 2. Federal agency or United States government-sponsored enterprise obligations, participations, or other instruments, including those issued by or fully guaranteed as to principal and interest by federal agencies or United States government-sponsored enterprises. Certain short-term obligations of agencies or instrumentalities of the United States Government may be backed only by the issuing agency or instrumentality and may not be backed by the full faith and credit of the United States Government. For example, securities issued by the Federal Home Loan Banks and the Freddie Mac are supported only by the credit of the agency or instrumentality that issued them, and not by the United States Government, and securities issued by the Federal Farm Credit System and the Fannie Mae are supported by the agency's or instrumentality's right to borrow money from the U.S. Treasury under certain circumstances;
 3. Registered state warrants or treasury notes or bonds of this state, including bonds payable solely out of the revenues from a revenue-producing property owned, controlled, or operated by this state or by a department, board, agency, or authority of this state.
 4. Bonds, notes, warrants, or other evidences of indebtedness of any local agency within this state, including bonds payable solely out of the revenues from a revenue-producing property owned, controlled or operated by the local agency, or by a department, board, agency, or authority of the local agency.

5. Bankers acceptances (otherwise known as bills of exchange or time drafts) that are drawn on and accepted by a commercial bank which are eligible for purchase by the Federal Reserve System. Such bankers acceptances may not exceed 180 days maturity. No more than forty percent (40%) of the District's money may be invested in such bankers acceptances. No more than thirty percent (30%) of the District's money may be invested in the bankers acceptances of any one commercial bank. The commercial bank shall have the highest short-term letter and numerical rating as provided by Moody's Investors Service, Inc. ("Moody's") or Standard & Poor's Rating Agency ("Standard & Poor's");
6. Commercial paper of "prime" quality of the highest ranking or of the highest letter and number rating as provided for by a nationally recognized statistical-rating organization (NRSRO). The entity that issues the commercial paper shall meet all of the following conditions in either paragraph (a) or paragraph (b):
 - (a) The entity is organized and operating in the United States as a general corporation, and has total assets in excess of \$500 million, and has debt other than commercial paper, if any, that is rated "A" or higher by a NRSRO.
 - (b) The entity is organized within the United States as a special purpose corporation, trust, or limited liability company, has a program wide credit enhancements including, but not limited to, over collateralization, letters of credit or surety bond, and has commercial paper that is rated "A-1" or higher, or the equivalent by an NRSRO.

Commercial paper shall have a maximum maturity of 270 days or less. The District may invest no more than twenty-five percent (25%) of its money in such commercial paper. The District may purchase no more than ten percent (10%) of the outstanding commercial paper of any single issuer;

7. Repurchase agreements with respect to securities described in paragraphs (i) and (ii) above provided that the term of any such repurchase agreement shall be one year or less. A repurchase agreement means a purchase of securities by the District pursuant to an agreement by which the seller will repurchase the securities on or before a specific date at an agreed upon price, thereby establishing the yield during the District's holding period. The yield established for the repurchase agreement is determined by current short-term rates and may be more or less than the interest rate on the underlying securities. The securities underlying a repurchase agreement is, in effect, collateral under the agreement and the securities shall be (otherwise known as bills of exchange or time drafts) delivered to the District by book entry, physical delivery or by third-party custodial agreement. At the time a repurchase agreement is made, the underlying securities shall be valued at one hundred and two percent (102%) or greater of the repurchase price. If an agreement is in effect for more than one day, and, in the

event their value drops below one hundred and two percent (102%) of the repurchase price, the seller to the repurchase agreement shall provide additional securities or money within one business day so that the value of the collateral is not less than one hundred and two percent (102%) of the repurchase price. At the expiration of each agreement, the District receives payment of the repurchase price as a condition for the transfer of the underlying securities back to the Seller;

8. Negotiable certificates of deposit issued by a nationally or state-chartered bank or a state or federal savings association (as defined in Section 5102 of the California Financial Code) a state or federal credit union, or by a state-licensed branch of a foreign bank. Purchases of negotiable certificates of deposit may not exceed thirty percent (30%) of the District's money which may be invested pursuant to this section. The District is prohibited from investing the District's funds, or funds in the custody of the District, in negotiable certificates of deposit issued by a state or federal credit union if a member of the District's Board of Directors, or any person with investment decision making authority with the District, also serves on the Board of Directors, or any committee appointed by the Board of Directors, or the credit committee or the supervisory committee of the state or federal credit union issuing the negotiable certificates of deposit.
9. Shares of beneficial interest issued by diversified management companies (also known as mutual fund companies) that invest in the securities and obligations as authorized by Government Code, Section 53601(a) to (j), (m) and (n) and that comply with investment restrictions contained in Government Code, Section 53630, et. seq. However, a county or party to a reverse repurchase agreement or securities lending agreement is not required to be a primary dealer of the Federal Reserve Bank of New York if the diversified management company's board of directors finds that the counterparty presents a minimal risk of default, and the value of the securities underlying a repurchase agreement or securities lending agreement may be 100% of the sales price of the securities are marked to market daily. The diversified management company in this section shall have attained the highest ranking or the highest letter and numerical ranking provided by not less than 2 NRSROs. The purchase price of shares of beneficial interest shall not include any commission or load that the company may charge and shall not exceed twenty percent (20%) of the District's money that may be invested pursuant to this Statement of Investment Policy. No more than ten percent (10%) of the District's money may be invested in shares of any one mutual fund referenced in this paragraph (ix);
10. Shares of beneficial interest issued by diversified management companies that are money market funds registered with the Securities and Exchange Commission under the Investment Company Act of 1940 (15 U.S.C. Sec. 80(a-l et seq.)). The diversified management company shall have attained the highest ranking or the highest letter in numerical ranking provided by no less than 2 NRSROs. The purchase price of shares of beneficial interest shall not include any commission or load that

the companies may charge and shall not exceed twenty percent (20%) of the District's money that may be invested pursuant to this Statement of Investment Policy.

7) Nondiscrimination

Investments shall not knowingly be made in any institution that practices or supports directly or indirectly through its actions discrimination on the basis of race, religion, color, creed, national or ethnic origin, age, gender, or physical disability.

8) Maximum Maturity

Investment maturities shall be based on a review of cash flow forecasts. Maturities will be scheduled so as to permit the District to meet all projected obligations. No investment shall be made in any security, other than a security underlying a repurchase or reverse repurchase agreement that at the time of the investment has a term remaining to maturity in excess of five years.

9) Ineligible Investments

Any security type or structure not specifically approved by this policy and investment instructions is specifically prohibited. Security types that are thereby prohibited to be purchased include, but are not limited to:

- A. Complex derivative structures such as range notes, inverse floaters, or any other complex variable rate or structure note.
- B. Interest-only strips that are derived from a pool of mortgages, or any security that could result in zero interest accrual if held to maturity.

10) Sales Prior to Maturity

Sales prior to maturity are permitted. It is also recognized that in a changing interest rate environment, it may be financially advantageous to sell investments at a book value loss in order to reinvest in a more profitable security.

11) Reporting

The District Investment Officer shall render to the Board of Directors a monthly report which shall include the following information for investments:

- Distribution of funds within all financial accounts maintained by the District;¹
- Summary of investments including the types of investments, maturity date, yield, costs and market value;²
- Detailed money market investment account activity associated with the purchase of U.S. Treasuries;²
- The current balance, accrued interest and historical effective yield of funds managed by the Local Agency Investment Fund (LAIF).²

¹ This report component is contained within the Director Memorandum of the monthly Unaudited Financial Report.

² This report component is contained within the Investment Summary of the monthly Unaudited Financial Report.

The monthly report shall also:

- A. State compliance of the portfolio to this Investment Policy and State law, or state the manner in which the portfolio is not in compliance.
- B. Include a description of any of the District's funds, investments or programs that are under management of contracted parties, including lending programs.
- C. Include a statement denoting the ability of the District to meet its expenditure requirements of the next six months, or provide an explanation as to why sufficient money shall, or may, not be available.

The District Investment Officer shall annually render to the Board of Directors a Statement of Investment Policy, which the Board of Directors shall consider at a public meeting.

12) Interest Allocation

The District Investment Officer shall allocate interest pursuant to an Interest Allocation Schedule. A list of funds eligible to receive interest shall be maintained by the District Investment Officer.



Date: January 11, 2011

Subject: Discussion Regarding the Appointment of Individuals as Representatives in Small Claims Court

Each year the District reappoints individuals to represent the District in small claims court. The attached draft resolution has been updated for calendar year 2011.

RESOLUTION NO. 04-2011

**A RESOLUTION OF THE YUCAIPA VALLEY WATER DISTRICT
APPOINTING A CORPORATE REPRESENTATIVE TO SMALL CLAIMS COURT**

UNREPRESENTED PARTY (<i>Name and Address</i>) Yucaipa Valley Water District 12770 Second Street, Yucaipa, California 92399		TELEPHONE NUMBER (909) 797-5119	FOR COURT USE ONLY
NAME OF COURT:	County of San Bernardino		
STREET ADDRESS:	303 W. Third Street		
MAILING ADDRESS:	Same		
CITY AND ZIP CODE:	San Bernardino, California 92415		
BRANCH NAME:			
PLAINTIFF:	Not Applicable		CASE NUMBER:
DEFENDANT:	Not Applicable		
RESOLUTION - APPOINTING A CORPORATE REPRESENTATIVE			

It appearing to the Board of Directors of the Yucaipa Valley Water District, a corporation qualified to do business in the State of California, that it is desirable and necessary to appoint an officer/ employee of this corporation to act for and in its behalf in the Small Claims Court of the San Bernardino County Municipal Court District, San Bernardino Division, County of San Bernardino, California.

And it further appearing that Joseph B. Zoba, John F. Nelson, Brent Anton, Vicky Elisalda, Peggy Little, and Chelsie Fogus as an officer/employee of Yucaipa Valley Water District is a suitable individual for such appointment; and said officer/employee is not employed solely for the purpose of representing said corporation.

Be it resolved that Joseph B. Zoba, and/or John F. Nelson, and/or Brent Anton, and/or Vicky Elisalda, and/or Peggy Little, and/or Chelsie Fogus is appointed to represent and appear for said corporation in the lawful process of any and all claims filed in said court, and is further authorized and empowered to accept service of process issued by said court, for and on behalf of said corporation.

I certify that the foregoing resolution was adopted by the Board of Directors of the Yucaipa Valley Water District, at a regular meeting held on January 19, 2011.

Jay Bogh, President

(SEAL)

Joseph B. Zoba, Secretary

THE LOCAL BUSINESS ADDRESS OF SAID CORPORATION IS:
**Yucaipa Valley Water District
12770 Second Street, Yucaipa, California 92399**

SIGNATURE OF AGENT SO APPOINTED

NAME AND TITLE OF AGENT SO APPOINTED



Date: January 11, 2011

Subject: Discussion Regarding a Nonsubstantive Change to the Conflict of Interest Code of the Yucaipa Valley Water District

Every two years the District is required to review our conflict of interest code and report to the Fair Political Practices Commission any changes. The only change needed to our policy at this time is the modification in job title for our Public Works Manager.

Upon approval of this nonsubstantive change from the FPPC, the District staff will present this item at a board meeting documenting the minor change.



Yucaipa Valley Water District

12770 Second Street • P. O. Box 730 • Yucaipa, California 92399-0730
 (909) 797-5117 • Fax: (909) 797-6381 • www.yvwd.dst.ca.us

January 3, 2011

Mr. Roman Porter, Executive Director
 Fair Political Practices Commission
 428 J Street, Suite 800
 Sacramento, California 95814

Subject: Request for a Nonsubstantive Amendment to the Conflict of Interest Code for the Yucaipa Valley Water District

Dear Mr. Porter:

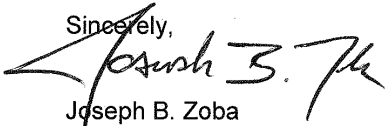
The Yucaipa Valley Water District has completed our review of our current Conflict of Interest Code and requests your concurrence that the proposed amendment to our Code is nonsubstantive.

Pursuant to the California Code of Regulations Title 2, Division 6, Section 18752, the District has included for following information for your review:

- The conflict of interest code for the District showing the proposed nonsubstantive amendments in strikeout/underscore form;
- A brief description of the proposed amendments; and
- A declaration by the chief executive officer declaring the code specifically enumerates each of the positions within the agency which involve the making or participation in the making of decisions which may foreseeably have a material effect on any financial interest.

Should you have any questions, please contact me directly at (909) 797-5119 x2.

Sincerely,



Joseph B. Zoba
 General Manager

Attachments

Directors and Officers

IAN CUTHBERTSON
 Division 1

BRUCE GRANLUND
 Division 2

JAY BOGH
 Division 3

LONNI GRANLUND
 Division 4

HANK WOCHHOLZ
 Division 5

JOSEPH B. ZOBA
 General Manager
 and Secretary

CONFLICT OF INTEREST CODE FOR THE YUCAIPA VALLEY WATER DISTRICT

The Political Reform Act (Government Code Section 81000, et seq.) requires state and local government agencies to adopt and promulgate conflict of interest codes. The Fair Political Practices Commission ("FPPC") has adopted a regulation (2 Cal. Code of Regs. Sec. 18730) which contains the terms of a standard conflict of interest code, which can be incorporated by reference in an agency's code. After public notice and hearing it may be amended by the FPPC to conform to amendments in the Political Reform Act. Therefore, the terms of 2 California Code of Regulations Section 18730 and any amendments to it duly adopted by the FPPC are hereby incorporated by reference. This regulation and the attached Appendix designating officials and employees and establishing disclosure categories, shall constitute the Conflict of Interest Code of the Yucaipa Valley Water District.

Designated employees shall file their statements with the Yucaipa Valley Water District who will make the statements available for public inspections and reproduction. (Gov. Code Section 81008.)

APPENDIX "A"

List of Designated Positions	Assigned Disclosure Categories
Controller	1 – 5
District Engineer	1 – 4
Deputy Manager – Water Resources	1 – 4
Operations Manager <u>Public Works Manager</u>	1 – 4
Utility Services Superintendent	1 – 4
Engineering Project Integrator	1 – 4
Administrative Manager	1 – 4
Wastewater Superintendent	1 – 4
Water Superintendent	1 – 4
Recycled Water Manager	1 – 4
Resource Sustainability Manager	1 – 4
Purchasing Agent	1
General Legal Counsel	1 – 5
Consultants*	1 – 5

* With respect to consultants the General Manager, however, may determine in writing that a particular consultant, although a "designated position," is hired to perform a range of duties that is limited in scope and thus is not required to fully comply with the disclosure requirements in this section. Such written determination shall include a description of the consultant's duties, and based upon that description, a statement of the extent of disclosure requirements. The General Manager's determination is a public record and shall be retained for public inspection in the same manner and location as this conflict of interest code.

** The following positions are NOT covered by the code because they must file under section 87200 and, therefore, are listed for informational purposes only:

Members of the Board of Directors
 General Manager/Secretary
 Assistant General Manager
 Members of the YVWD Financing Corporation

An individual holding one of the above listed positions may contact the Fair Political Practices Commission for assistance or written advice regarding their filing obligations if they believe that their position has been categorized incorrectly. The Fair Political Practices Commission makes the final determination whether a position is covered by section 87200.

APPENDIX "B"

Disclosure Categories

All interests in real property within the Agency's jurisdiction and investments and business positions in business entities, and sources of income, including gifts, loans and travel payments from:

- Category 1: Persons or entities which provide services, materials, machinery or equipment of the type utilized by the Agency.
- Category 2: Private water companies or entities or persons engaged in farming, real estate development or owners of real estate.
- Category 3: Financial institutions including, but not limited to banks, savings and loan associations and credit unions.
- Category 4: Persons or entities which have filed claims against the Agency.
- Category 5: Persons or entities which are of the type in which the authority is empowered to invest its funds.

**Summary of Proposed Changes to the
Conflict of Interest Code of the Yucaipa Valley Water District**

As illustrated in Appendix "A" of the Conflict of Interest Code of the Yucaipa Valley Water District, the title of the "Operations Manager" has been changed to "Public Works Manager".

California Code of Regulations, Title 2, Division 6, Section 18752(e)(1) provides for a nonsubstantive change to the conflict of interest code for "the reclassification or renaming of previously designated positions..."

DECLARATION OF CHIEF EXECUTIVE OFFICER
FOR MULTI-COUNTY AGENCIES

The proposed Conflict-of-Interest Code specifically enumerates each of the positions within the agency which involve the making or participation in the making of decisions which may foreseeably have a material financial effect on any financial interest. The agency has satisfied all of the requirements of Title 2, Division 6 of the California Code of Regulations §18750.1 preliminary to approval of the proposed code.

1/3/2011
Date


Signature of Chief Executive Officer

(Regulations of the Fair Political Practices Commission Title 2, Division 6, California Code of Regulations.)

§ 18752. Nonsubstantive Amendments of Conflict of Interest Codes.

(a) A state agency or a local government agency with jurisdiction in more than one county may make nonsubstantive alterations of a conflict of interest code for its agency.

(b) No alteration of a conflict of interest code shall be deemed nonsubstantive until the agency has requested and received prior written approval from the Executive Director of the Fair Political Practices Commission, or his or her designee, to classify the alteration as nonsubstantive.

(c) Each request for a nonsubstantive alteration shall be in writing and shall be accompanied by:

(1) The conflict of interest code for the agency showing the proposed nonsubstantive amendments in strikeout/underscore format;

(2) A brief description of the proposed amendments; and

(3) A declaration by the chief executive officer of the agency declaring that the code specifically enumerates each of the positions within the agency which involve the making or participation in the making of decisions which may foreseeably have a material financial effect on any financial interest.

(d) The Executive Director, or his or her designee, shall respond in writing to each request for interim approval within 30 calendar days or receipt.

(e) Nonsubstantive alterations of conflict of interest codes shall be limited to the following:

(1) The reclassification or renaming of previously designated positions, provided no

designated positions are created, and provided no existing disclosure responsibilities are modified;

(2) The deletion of a position for which the classification has been abolished by the agency;

(3) The addition, deletion or modification of definitional or operational provisions of a conflict of interest code in conformity to a statutory amendment, a regulation of the Fair Political Practices Commission, a decision of the California Supreme Court, or a final decision of a California Court of Appeal; or

(4) The modification of any provision of a conflict of interest code, provided no disclosure or disqualification obligation of any designated employee is disturbed thereby.

(f) Nonsubstantive amendments to a state agency conflict of interest code which have been approved by the Executive Director or his or her designee shall be transmitted within 30 days by the agency to the Office of Administrative Law for filing with the Secretary of State without further review pursuant to Article 6 (commencing with Section 11349) of Chapter 3.5 of Division 1 of Title 2 of the Government Code. When the agency files the nonsubstantive amendments with the Office of Administrative Law, it shall:

(1) Indicate that it is transmitting a conflict of interest code approved by the Fair Political Practices Commission for filing; and

(2) Request that the Office of Administrative Law publish the code in its entirety, or request that the Office of Administrative Law print an appropriate reference to the agency's code in its title of the California Code of Regulations.

(g) The nonsubstantive amendments to the conflict of interest code shall become effective on the thirtieth day after approval by the Executive Director or his or her designee or in the case

of a state agency, the thirtieth day after the date of filing with the Secretary of State.

Note: Authority cited: Section 83112, Government Code. Reference: Section 87306,

Government Code.

HISTORY

1. New section filed 6-3-77; effective thirtieth day thereafter (Register 77, No. 23).
2. Amendment of subsection (a) filed 4-28-82; effective thirtieth day thereafter (Register 82, No. 18).
3. Amendment filed 1-11-83; effective thirtieth day thereafter (Register 83, No. 3).
4. Amendment filed 4-21-92; operative 5-21-92 (Register 92, No. 19).
5. Editorial correction of subsection (f)(2) (Register 95, No. 40).