



# Yucaipa Valley Water District

12770 Second Street, Yucaipa, California 92399 Phone: (909) 797-5117

---

## **Notice and Agenda of a Regular Meeting of the Board of Directors**

**Wednesday, March 16, 2011 at 6:00 p.m.**

---

- I. CALL TO ORDER - Pledge of Allegiance
- II. ROLL CALL
- III. PUBLIC COMMENTS - At this time, members of the public may address the Board of Directors on matters within its jurisdiction. To provide comments on specific agenda items, please complete a speaker's request form and provide the completed form to the Board Secretary prior to the board meeting.
- IV. CONSENT CALENDAR - All matters listed under the Consent Calendar are considered by the Board of Directors to be routine and will be enacted in one motion. There will be no discussion of these items prior to the time the board considers the motion unless members of the board, the administrative staff, or the public request specific items to be discussed and/or removed from the Consent Calendar. The General Manager recommends approval of the following:
  - A. Minutes of Meetings
    - 1. Regular Board Meeting - March 2, 2011
    - 2. Board Workshop - March 8, 2011
    - 3. Board Workshop - March 9, 2011
    - 4. Board Workshop - March 15, 2011
  - B. Payment of Bills
    - 1. Approve/Ratify Invoices of Board Awarded Contracts
    - 2. Approve General Expenses for February 2011
- V. BOARD REPORTS
  - A. City of Yucaipa Strategic Planning Meeting - March 3, 2011
  - B. Yucaipa Valley Water District Board Workshop - March 8, 2011
  - C. Yucaipa Valley Water District Board Workshop - March 9, 2011
  - D. Yucaipa Valley Water District Board Workshop - March 15, 2011
  - E. City of Yucaipa Economic Development Advisory Committee
  - F. Reports by Board Members

---

Any person with a disability who requires accommodation in order to participate in this meeting should telephone Chelsie Fogus at (909) 797-5118 at least 48 hours prior to the meeting in order to make a request for a disability-related modification or accommodation.

Materials related to an item on this agenda submitted to the Board of Directors after distribution of the board meeting packet are available for public inspection during normal business hours at the District office located at 12770 Second Street, Yucaipa. Meeting material may also be available on the District's website at [www.yvwd.dst.ca.us](http://www.yvwd.dst.ca.us)

VI. STAFF REPORT

VII. DISCUSSION ITEMS

- A. Presentation of the Unaudited Financial Report for February 2011

[\[Director Memorandum No. 11-023 - Page 31 of 78\]](#)

RECOMMENDED ACTION: That the Board of Directors receives and files the unaudited financial report as presented.

- B. Public Hearing for the Mitigated Negative Declaration Related to the Mountainview Generating Station Brineline Project

[\[Director Memorandum No. 11-024 - Page 58 of 78\]](#)

RECOMMENDED ACTION: That the Board finds that the Draft Mitigated Negative Declaration complies with the California Environmental Quality Act by adopting Resolution No. 07-2011 Certifying the Final Mitigated Negative Declaration for the proposed project.

- C. Discussion Regarding the Purchase of Two Dump Trucks for the Public Works Department

[\[Director Memorandum No. 11-025 - Page 66 of 78\]](#)

RECOMMENDED ACTION: That the Board authorizes the purchase of two replacement dump trucks from H.W. Hunter for a sum not to exceed \$99,000.

- D. Ratification of Various Contracts for Medical, Dental and Vision Benefits

[\[Director Memorandum No. 11-026 - Page 72 of 78\]](#)

RECOMMENDED ACTION: That the Board ratifies the execution of contracts with UHC/Pacificare for medical insurance coverage; Standard Dental, Safeguard Dental and Western Dental for dental insurance coverage; and Standard Vision for vision insurance.

- E. Authorization of Water Service Change for the Proposed Park on 5<sup>th</sup> Street and Wildwood Canyon Road, Yucaipa

[\[Director Memorandum No. 11-027 - Page 75 of 78\]](#)

RECOMMENDED ACTION: That the Board authorizes the District staff to change the drinking water service lateral to a recycled water service lateral for a cost not to exceed \$6,000.

VIII. DIRECTORS COMMENTS

IX. ANNOUNCEMENTS

- A. March 21, 2011 at 6:00 p.m. - Association of San Bernardino County Special District Meeting
- B. March 24, 2011 at 7:00 p.m. - San Bernardino Valley Municipal Water District Advisory Commission Meeting
- C. March 29, 2011 at 4:00 p.m. - Board Workshop
- D. March 31, 2011 at 4:00 p.m. - Board Workshop - Site tour of the Wochholz Regional Water Recycling Facility
- E. April 6, 2011 at 6:00 p.m. - Regular Board Meeting
- F. April 12, 2011 at 4:00 p.m. - Board Workshop
- G. April 18, 2011 at 6:00 p.m. - Association of San Bernardino County Special District Meeting
- H. April 20, 2011 at 6:00 p.m. - Regular Board Meeting

X. ADJOURNMENT

# CONSENT CALENDAR

# MINUTES OF A REGULAR BOARD MEETING

March 2, 2011

Directors Present:

Jay Bogh, President  
Bruce Granlund, Vice President  
Ian Cuthbertson, Director  
Lonni Granlund, Director  
Hank Wochholz, Director

Staff Present:

Joseph Zoba, General Manager  
Jack Nelson, Assistant General Manager  
Chelsie Fogus, Engineering Tech. I

Directors Absent:

None

Consulting Staff Present:

David Wysocki, Aklufi & Wysocki

Others Present:

Bill Brown, News Mirror  
John Jeter, SGPWA  
Ray Morris, SGPWA  
Bill Dickson, SGPWA

The regular meeting of the Board of Directors of the Yucaipa Valley Water District was called to order by Director Jay Bogh at 6:00 p.m. on Wednesday, March 2, 2010, at the General Office Building, 12770 Second Street, Yucaipa, California.

CALL TO ORDER

Director Jay Bogh led the pledge of allegiance.

FLAG SALUTE

The roll was called. All Directors were present.

ROLL CALL

There were no requests to speak from the audience.

PUBLIC COMMENTS

Director Hank Wochholz moved to approve the consent calendar and Director Ian Cuthbertson seconded a motion that carried unanimously to approve the consent calendar.

CONSENT CALENDAR  
MOTION NO. 1

Consent Calendar:

- A. Minutes of Meetings
  - 1. Regular Board Meeting - February 16, 2011
  - 2. Board Workshop - February 22, 2011

BOARD REPORTS:

Director Hank Wochholz reported on items discussed at the workshop on February 22, 2011.

WORKSHOP

Director Bruce Granlund reported on the Association of the San Bernardino County Special Districts meeting hosted by West Valley

ASSOCIATION OF SAN BERNARDINO COUNTY

Water District on February 28, 2011. Thomas J. Crowley, P.E., provided a talk on Full-Scale Implementation of a Biological Fluidized Bed Drinking Water Treatment Plant for Nitrate and Perchlorate Treatment.

SPECIAL DISTRICTS

- Director Lonni Granlund reported on the City of Yucaipa Focus Group Meeting on February 22, 2011.
- Director Lonni Granlund reported on the City of Yucaipa Comprehension Economic Strategic Committee Meeting held on February 24, 2011.

OTHER BOARD REPORTS

General Manager Zoba reported on the following items:

STAFF REPORT

- The 2011 Meeting Calendar has been updated and distributed.

There were no questions from the members of the Board.

DISCUSSION ITEMS:

General Manager Zoba provided an overview of Director Memorandum 11-021 - Ratification of Agreement Modification No. 003 to the Cooperative Funding Agreement with the United States Department of the Interior, Bureau of Reclamation Related to the Yucaipa Valley Regional Brineline Project. There being no questions, Director Bruce Granlund moved, Director Hank Wochholz seconded a motion that carried unanimously to ratify the execution of Modification No. 003 to the Cooperative Agreement No. R10AC35R03 with the Bureau of Reclamation as presented.

DM 11-021  
RATIFICATION OF  
AGREEMENT  
MODIFICATION NO. 003 TO  
THE COOPERATIVE  
FUNDING AGREEMENT  
WITH THE UNITED STATES  
DEPARTMENT OF THE  
INTERIOR, BUREAU OF  
RECLAMATION RELATED  
TO THE YUCAIPA VALLEY  
REGIONAL BRINELINE  
PROJECT

MOTION NO. 2

General Manager Zoba provided an overview of Director Memorandum 11-022 - Consideration of Resolution No. 06-2011 Authorizing Consolidated Billing for Multiple Meters Related to Dual Plumbed Homes and Fire Services. There being no questions, Director Ian Cuthbertson moved and Director Lonni Granlund seconded a motion that carried unanimously to adopt Resolution No. 06-2011 as presented.

DM 11-022  
CONSIDERATION OF  
RESOLUTION NO. 06-2011  
AUTHORIZING  
CONSOLIDATED BILLING  
FOR MULTIPLE METERS  
RELATED TO DUAL  
PLUMBED HOMES AND  
FIRE SERVICE

MOTION NO. 3

RESOLUTION No. 06-2011

RESOLUTION OF THE BOARD OF DIRECTORS OF THE  
YUCAIPA VALLEY WATER DISTRICT  
AUTHORIZING CONSOLIDATED BILLING FOR MULTIPLE  
METERS RELATED TO DUAL PLUMBED HOMES AND FIRE SERVICES

(For full text, see Resolution Book.)

There were no comments by directors.

DIRECTOR COMMENTS

General Manager Zoba read the announcements listed on the agenda

ANNOUNCEMENTS

There being no further business, the meeting was adjourned at 6:25 p.m.

ADJOURNMENT

Respectfully submitted,

\_\_\_\_\_  
Joseph B. Zoba, Secretary

(Seal)

# MINUTES OF A BOARD WORKSHOP

March 8, 2011 at 4:00 P.M.

## Directors Present:

Jay Bogh, President  
Bruce Granlund, Vice President  
Ian Cuthbertson, Director  
Lonni Granlund, Director  
Hank Wochholz, Director

## Staff Present:

Joseph Zoba, General Manager  
Vicky Elisalda, Controller  
Brent Anton, Engineering Project Integrator  
Jennifer Ares, Resource Sustainability Mgr  
Matt Harward, Deputy Mgr. Water Resources  
John Hull, Public Works Manager  
Jeremy Costello, Engineering Tech I  
Chelsie Fogus, Engineering Tech I

## Directors Absent:

None

## Consulting Staff Present:

David Wysocki, Aklufi & Wysocki

## Others Present:

Bill Brown, News Mirror  
Richard Siegmund, Sigland & Associates  
David Dysart, SGPWA  
Ted Haring, SGPWA  
Ray Morris, SGPWA  
John Jeter, SGPWA  
Jeff Davis, SGPWA  
Tony Lara, Beaumont Cherry Valley Water District  
David Melcher, Rotary Club

The items listed below were presented for discussion. No decisions were reached.

- I. Call to Order - 4:00 p.m.
- II. Public Comments - None
- III. Staff Comments - General Manager Zoba reported on the following items:
  - Received the Robinson Ranch EIR from the City of Yucaipa;
  - 7 Oaks Dam Testing, Tuesday, March 1, 2011;
  - Water Wise Workshop;
  - Reservoir R-12.4 and R-11.4 Board Workshop Site Tour, Wednesday, March 09, 2011
- IV. Workshop Presentations
  - A. Presentation of a proposed Allocation Methodology for the 17,300 Acre Feet of Table "A" Water of the San Gorgonio Pass Water Agency [Workshop Memorandum No. 11-029] - General Manager Zoba presented additional details of the proposed allocation.
  - B. Presentation of the Proposed Park on the Northwest Corner of Wildwood Canyon Road and 5th Street, Yucaipa [Workshop Memorandum No. 11-030] -

Engineering Project Integrator Anton discussed the need to replace the existing drinking water service with a new 3/4-inch recycled water service for the proposed park.

V. Capital Improvement Projects

- A. Status Report on the Construction of the Yucaipa Valley Regional Brineline [Workshop Memorandum No. 11-031] - Engineering Project Integrator Anton provided an update of the status on the construction of the Yucaipa Valley Regional Brineline Project.
- B. Proposed Capital Improvement Projects for Salinity Management in the Yucaipa Valley [Workshop Memorandum No. 11-032] - General Manager Zoba provided an overview of the proposed projects, funding alternatives and related issues associated with the completion of these projects.
- C. Completion of Recycled Water Facilities North of Yucaipa Boulevard, Yucaipa - [Workshop Memorandum No. 11-033] - Engineering Project Integrator provided an overview of the two missing connections in the recycled water system and staff recommendation to solicit proposals from contractors to complete these minor pipeline improvements before the summer recycled water demand season.

VI. Development Related Issues

- A. Discussion Regarding the Implementation of Facility Capacity Charge Modifications for Dual Plumbed Residential Homes [Workshop Memorandum No. 11-034] - General Manager Zoba discussed the review of various sized parcels and the recommendation to modify the subsections of adopted Resolution No. 07-2007.
- B. Discussion Regarding a Pre-Development Agreement for the Cherry Valley Plaza Development (Parcel Map No. 35691), Calimesa [Workshop Memorandum No. 11-035] -General Manager Zoba provided an overview of the proposed agreement and a status report from the potential buyer.

VII. Administrative Issues

- A. Discussion Regarding the Unaudited Financial Report for February 2011 [Workshop Memorandum No. 11-036] - Controller Elisalda presented the unaudited financial report for February 2011.
- B. Update on the Status of the Mitigated Negative Declaration for the Mountainview Power Generating Station Brineline Connection [Workshop Memorandum No. 11-037] - Resource Sustainability Manager Ares provided an update on the status of the draft Mitigated Negative Declaration for the Mountainview Power Generating Station Brineline Connection Project.
- C. Discussion Regarding the Authorization to Purchase Two Dump Trucks for the Public Works Department [Workshop Memorandum No. 11-038] - Public Works Manager Hull provided a staff recommendation to purchase two replacement dump trucks for the Public Works Department.
- D. Discussion Regarding Quotations from Potential Medical Insurance Providers [Workshop Memorandum No. 11-039] - General Manager Zoba stated staff will be voting on March 9, 2011 for the renewal of medical benefits on April 1, 2011 and it will be presented at the March 16, 2011 board meeting for approval.

VIII. Directors Comments - There were no comments by directors.

IX. Adjournment - The meeting was adjourned at 5:35 p.m.

Respectfully submitted,

---

Joseph B. Zoba, Secretary

(SEAL)

## MINUTES OF A BOARD WORKSHOP

March 9, 2011 at 4:00 P.M.

### Site Inspection & Tour of the Reservoir R-12.4 Property

Directors Present:

Jay Bogh, President  
Bruce Granlund, Vice President  
Ian Cuthbertson, Director  
Lonni Granlund, Director  
Hank Wochholz, Director

Staff Present:

Joseph Zoba, General Manager  
Brent Anton, Engineering Project Integrator  
Jennifer Ares, Resource Sustainability Mgr  
Matt Harward, Deputy Mgr. Water Resources  
John Hull, Public Works Manager  
Chelsie Fogus, Engineering Tech I

Directors Absent:

None

Consulting Staff Present:

David Wysocki, Aklufi & Wysocki

Others Present:

Bill Brown, News Mirror

The items listed below were presented for discussion. No decisions were reached.

- I. Call to Order - 4:00 p.m.
- II. Public Comments - None
- III. Tour and Inspection of the Proposed R-12.4 Site
- IV. Tour and Inspection of the Proposed Reservoir R-11.4 Site
- V. Directors Comments - There were no comments by directors.
- VI. Adjournment - The meeting was adjourned at 5:12 p.m.

Respectfully submitted,

---

Joseph B. Zoba, Secretary

(SEAL)

## MINUTES OF A BOARD WORKSHOP

March 15, 2011 at 4:00 P.M.

Site Inspection & Tour of the  
Western Riverside County Regional Wastewater Authority Treatment Plant

Copies of the workshop minutes will be distributed prior to the board meeting  
for review and approval.

Board Awarded Contracts  
Consent Calendar Regular Meeting - March 16, 2011

District Awarded Contracts	Director Memorandum	Job or GL No.	Job Cost Breakdown	Awarded Contract Amount	Prior Payments to Date	Pending Invoice Amount	Total Contract Payments	Remaining Contract Amount	Percent Remaining	Encumbered Funds - Remaining Contract Amount					
										General Operating Expenses	Water Division Funds	Sewer Division Funds	Non-Potable Division Funds	Other Funds	
Aklufi & Wysocki - FY 2011 Legal Services	--	*-5-06-54107	--	--	\$95,173	\$7,163	\$102,335								
Barber-Webb Company															
Repair the equalization basin liner at WRWRF	10-075	88-8479	\$23,227	\$27,305	\$0	\$10,056	\$10,056	\$17,249	100%	\$17,249					
CO#1 - Repair the equalization basin liner at WRWRF	10-095		\$4,078												
DDB Engineering															
Prep of the Discharge Permit Appl for WRWRF	10-070	03-5-06-54109		\$44,300	\$14,805	\$330	\$15,135	\$29,165	66%	\$29,165					
Delta Partners \$90,000 per year - Legislative Consult (exp 12/13) W/S	09-007	*-5-06-54109	--	\$90,000	\$7,500	\$7,500	\$15,000	\$75,000	83%	\$75,000					
Dudek & Associates															
Recycle Water Phase II - Non-Potable & Brineline Project - Design	07-080	65-178	\$415,040	\$2,102,067	\$1,924,834	\$8,502	\$1,933,336	\$168,731	8%				\$168,731		
TO#1, Amendment #1 (EPA)	07-123		\$34,920												
TO#1, Amendment #2	08-038		\$79,920												
TO#1, Amendment #3	08-088		\$1,267,407												
TO#1, Amendment #4	08-089		\$37,539												
TO#1, Amendment #5	09-070		\$34,865												
TO#1, Amendment #6	09-079		\$50,900												
TO#1, Amendment #7	10-005		\$57,848												
TO#1, Amendment #8	10-007		\$8,840												
TO#1, Amendment #9	10-008		\$4,950												
TO#1, Amendment #10	10-037		\$35,800												
TO#1, Amendment #11	10-038	03-7387	\$49,760												
TO#1, Amendment #12	10-084		\$24,278												
TO#2, Environmental requirements for SCRAM project	10-064	88-5399		\$3,750	\$3,720	\$0	\$3,720	\$30	1%	\$30					
Environmental Studies associated with YVRWSRP (PROP 50) (Received \$40,000 from STWMA-PC1 )	05-145	65-1130	\$32,235	\$32,235	\$216,468	\$4,885	\$221,353	(\$189,118)	-587%	(\$189,118)					
Environmental Services for the BCV Non-Potable Water Ext.	11-018	04-9435		\$53,454	\$0	\$0	\$0	\$53,454	100%				\$53,454		
Review & Update local pretreatment limits	09-105	03-5-06-54109		\$30,700	\$24,438	\$0	\$24,438	\$6,263	20%	\$6,263					
Inland Potable Services, Inc.															
Annual Inspection & Cleaning of Various Facilities	10-083	**5-01-51003	\$64,950	\$64,950	\$64,950	\$0	\$64,950	\$0	0%	\$0					
Krieger & Stewart															
TO#5, Design R-13.4 and H-2 Reservoirs for JP Ranch	05-083	65-180	\$47,400	\$79,000	\$50,471	\$0	\$50,471	\$28,529	36%					\$28,529	
60% R-13.4 and 40% H-2	05-083	65-179	\$31,600												
Construction Mgmt Svcs for Non-Potable/Outfall	10-022	04-7386		\$979,100	\$60,715	\$41,172	\$101,887	\$236,686	24%			\$236,686			
Construction Mgmt Svcs for Brineline		03-7387			\$565,138	\$75,389	\$640,528								
Merlin Johnson Construction, Inc.															
Wildwood Creek Sewer Remediation	11-015	65-9021		\$28,600	\$28,600	\$0	\$28,600	\$0	0%	\$0					
One Stop Landscape Supply - FY 2011 Sludge Hauling & Reuse	--	03-5-02-57031	--	--	\$170,806	\$20,912	\$191,718								

Board Awarded Contracts  
Consent Calendar Regular Meeting - March 16, 2011

District Awarded Contracts	Director Memorandum	Job or GL No.	Job Cost Breakdown	Awarded Contract Amount	Prior Payments to Date	Pending Invoice Amount	Total Contract Payments	Remaining Contract Amount	Percent Remaining	Encumbered Funds - Remaining Contract Amount									
										General Operating Expenses	Water Division Funds	Sewer Division Funds	Non-Potable Division Funds	Other Funds					
Platinum Advisors																			
FY 2011 Lobbyist N-T-E per month	09-008	02-5-06-54109	--	--	\$40,000	\$5,000	\$45,000												
FY 2011 Quarterly Filing & Misc. Expenses		02-5-06-54109	--	--	\$250	\$0	\$250												
Pro-Craft Construction, Inc.																			
Installation of 30" Water Conveyance Pipeline	11-014	02-5916		\$949,742	\$0	\$0	\$0	\$949,742	100%		\$949,742								
RMC Water & Environment																			
TO#10 SRF Assistance	05-125	03-506-54109	\$90,258	\$90,258	\$68,142	\$1,125	\$69,266	\$20,992	23%	\$20,992									
TO#24, Project Mgmt Serv related to Recycled Water & Brineline	10-031		\$90,000																
Brineline Phase 1 & 2		03-7387	\$60,000	\$60,000	\$39,485	\$5,785	\$45,270	\$14,730	25%			\$14,730							
Non-Potable/Outfall		04-7386	\$30,000	\$30,000	\$19,328	\$3,831	\$23,159	\$6,841	23%				\$6,841						
Separation Processes, Inc.																			
TO#11, Study of Low Pressure Rev Osmosis Membranes at WRWRF	09-018	88-3971 (exp)	\$150,852	\$150,852	\$148,526	\$0	\$148,526	\$2,326	2%	\$2,326									
TO#12, Design Services for Salinity Concentrate Reductions	09-085	88-5399(exp)		\$144,940	\$124,567	\$0	\$124,567	\$20,373	14%	\$20,373									
TO#13, Prelim Eng Analysis of Wochholz Improved Salinity Effluent	09-086	88-5396 (exp)	\$32,500	\$110,632	\$90,812	\$5,715	\$96,527	\$14,105	13%	\$14,105									
To#13, Amendment #1 CAD Design for WISE project	10-050		\$78,132																
Sukut Construction, Inc. (Phase 1&2 and C)																			
Construction of the Brineline - 1&2 (\$5,722,295.00)	10-020	03-14500	\$6,956,567	\$6,996,867	\$3,613,693	\$422,167	\$4,035,860	\$2,130,610	30%			\$2,130,610							
Non-Potable Outfall - C (\$1,234,272.00)		04-14500			\$614,493	\$215,904	\$830,397												
CO#1 - 1&2 (\$40,300.42)	10-089		\$40,300																
Vavrinek, Trine, Day & Company (VTD)																			
FY 2010 Auditing Services (add \$6205 for Single Audit)	08-079	*-5-06-54108	\$30,450	\$33,450	\$33,450	\$0	\$33,450	\$0	0%	\$0									
Additional Single Audit	10-068	*-5-06-54108	\$3,000																
Wildermuth Environmental Inc.																			
Monitoring & documenting the District's max benefit commitments	10-060	65-1138		\$10,634	\$1,607	\$675	\$2,282	\$8,352	79%	\$8,352									
Prelim Assessment for TDS & Nitrogen in San Timeoteo Mgmt Zone	10-061	03-5-06-54109		\$12,180	\$12,180	\$0	\$12,180	\$0	0%	\$0									
Antidegradation Analysis for the Beaumont Mgmt Zone	10-077	03-5-06-54109		\$12,000	\$4,462	\$1,960	\$6,422	\$5,579	46%	\$5,579									
<b>GRAND TOTALS</b>				<b>\$12,137,016</b>	<b>\$8,038,613</b>	<b>\$838,069</b>	<b>\$8,876,682</b>	<b>\$3,599,637</b>	<b>--</b>		<b>\$10,315</b>	<b>\$949,742</b>	<b>\$2,382,026</b>	<b>\$229,026</b>	<b>\$28,529</b>				
											<b>\$10,315</b>		<b>\$3,560,794</b>		<b>\$28,529</b>				

Approval of General Expenses February 2011 (Check Register Attached)

## Check Register - February 2011

<u>Check Date</u>	<u>Check Number</u>	<u>Name</u>	<u>Check Amount</u>
02/01/2011	11458	BofA Credit Card	1,022.94
02/01/2011	11459	BofA Credit Card	1,230.57
02/01/2011	11460	BofA Credit Card	757.68
02/01/2011	11461	Ralph C. Casas	63.00
02/01/2011	11462	Ameripride Uniform Services	973.40
02/01/2011	11463	American Water Works Assoc.	1,080.00
02/01/2011	11464	Coverall North America, Inc.	1,021.00
02/01/2011	11465	CWEA	900.00
02/01/2011	11466	Kelly Services, Inc.	587.00
02/01/2011	11467	Konica Minolta Business Soluti	295.00
02/01/2011	11468	Gregory N. Godwin	150.00
02/01/2011	11469	SCCI, Inc.	350.00
02/01/2011	11470	Verizon	1,628.69
02/01/2011	11471	Yucaipa Disposal, Inc.	313.50
02/01/2011	11472	Standard Insurance Company	2,135.60
02/01/2011	11473	Western Dental Services, Inc.	305.49
02/01/2011	11474	Anthem Blue Cross L and H	359.10
02/01/2011	11475	Standard Insurance Company	2,879.38
02/01/2011	11476	Aetna Health of California	38,078.55
02/01/2011	11477	Standard Insurance Vision Plan	390.40
02/01/2011	11478	MetLife Small Business Center	82.16
02/01/2011	11479	AW Associates, Inc.	450.00
02/01/2011	11480	Brenntag Pacific, Inc	10,146.40
02/01/2011	11481	Consolidated Electrical Distri	94.50
02/01/2011	11482	Center Electric	3,085.77
02/01/2011	11483	Donegan Tree Service	950.00
02/01/2011	11484	Evans-Hydro Inc.	10,426.88
02/01/2011	11485	Gierlich-Mitchell Inc	1,800.00
02/01/2011	11486	Grainger	397.68
02/01/2011	11487	Alan L. Grubel Automotive Inc.	490.80
02/01/2011	11488	Hach Company	1,852.60
02/01/2011	11489	Inland Water Works Supply Co.	269.70
02/01/2011	11490	James John Brothers	8,080.00
02/01/2011	11491	Johnson Power Systems	7,426.84
02/01/2011	11492	JR Freeman Co. Inc.	7,169.30
02/01/2011	11493	Merit Oil Company	4,581.02
02/01/2011	11494	Nagem, Inc.	1,007.07
02/01/2011	11495	NetComp Technologies, Inc.	3,246.24
02/01/2011	11496	Oily's Automotive Service & Re	877.98
02/01/2011	11497	Pro-Pipe & Supply, Inc.	790.34
02/01/2011	11498	Q Versa, LLC	8,213.12
02/01/2011	11499	Siemens Water Technologies Cor	144.30
02/07/2011	11500	Groundwater Resources Associat	300.00
02/07/2011	11501	ADS, LLC	2,634.00
02/07/2011	11502	American Messaging Services, L	14.16
02/07/2011	11503	Crider Public Relations, Inc.	1,445.00
02/07/2011	11504	First American Data Tree, LLC	54.65
02/07/2011	11505	InfoSend, Inc.	3,384.63
02/07/2011	11506	VOID CHECK	0.00
02/07/2011	11507	Leroy's Landscape Services	2,955.00
02/07/2011	11508	NAPA Genuine Parts Company	51.71
02/07/2011	11509	Northrop Gruman-IS	2,575.00
02/07/2011	11510	Sims Welding & Supply Co., Inc	178.91
02/07/2011	11511	The Gas Company	2,087.74
02/07/2011	11512	VOID CHECK	0.00

## Check Register - February 2011

<u>Check Date</u>	<u>Check Number</u>	<u>Name</u>	<u>Check Amount</u>
02/07/2011	11513	George F. Siddle	118.25
02/07/2011	11514	Verizon	127.22
02/07/2011	11515	HOOD, BRAD	26.08
02/07/2011	11516	ALFA GROUP	81.98
02/07/2011	11517	WYATT, KELLY	48.96
02/07/2011	11518	BEAVER, WILLIAM	50.66
02/07/2011	11519	G-7 REALTY INC	135.41
02/07/2011	11520	PORTWAY, TIMOTHY	40.00
02/07/2011	11521	Walter L. Ferar	1,882.99
02/07/2011	11522	Brenntag Pacific, Inc	12,816.56
02/07/2011	11523	Cemex Inc. USA	1,778.90
02/07/2011	11524	Center Electric	1,574.02
02/07/2011	11525	Gallade Chemical	902.08
02/07/2011	11526	Gierlich-Mitchell Inc	3,624.28
02/07/2011	11527	Godwin Pumps	6,882.79
02/07/2011	11528	Grainger	424.98
02/07/2011	11529	Hach Company	841.66
02/07/2011	11530	Harbor Freight Tools	185.28
02/07/2011	11531	Harrington Ind. Plastic, LLC	279.41
02/07/2011	11532	Hemet Valley Tool & Supply	193.58
02/07/2011	11533	Inland Water Works Supply Co.	674.25
02/07/2011	11534	Innerline Engineering	2,500.00
02/07/2011	11535	JR Freeman Co. Inc.	952.02
02/07/2011	11536	Matich Corp	2,063.39
02/07/2011	11537	MBC Applied Environmental Scie	1,200.00
02/07/2011	11538	Nagem, Inc.	112.50
02/07/2011	11539	P & R Paper Supply Co., Inc.	443.83
02/07/2011	11540	Red Alert Special Couriers	85.86
02/07/2011	11541	Siemens Water Technologies Cor	865.61
02/07/2011	11542	Gerald L. Gregory	150.00
02/07/2011	11543	HD Supply Facilities Maintenan	511.81
02/11/2011	11544	PAYROLL CHECK	2,579.61
02/11/2011	11545	PAYROLL CHECK	758.28
02/11/2011	11546	CA-PERS 457 Deferred Comp	15,026.48
02/11/2011	11547	Center Electric	227.02
02/11/2011	11548	Lloyd Copelan Garage Doors	120.00
02/11/2011	11549	San Bernardino County Flood Co	120.00
02/11/2011	11550	Smart & Final Stores, LLC	294.03
02/11/2011	11551	Frances Webster	196.63
02/11/2011	11552	Central Communications	259.75
02/11/2011	11553	Krieger & Stewart	10,582.74
02/11/2011	11554	SHATTUCK JR, HOWARD	1,355.10
02/11/2011	11555	Yucaipa Disposal, Inc.	933.93
02/11/2011	11556	Public Employees' Retirement S	26,598.03
02/11/2011	11557	Hong Nelson	125.00
02/11/2011	11558	Katherine Kostelecky	500.00
02/11/2011	11559	United Student Aid Funds, Inc.	168.43
02/11/2011	11560	IBEW Local 1436	352.00
02/11/2011	11561	Underground Service Alert Of S	127.50
02/14/2011	11562	Aklufi & Wysocki	26,547.00
02/14/2011	11563	DDB Engineering Inc.	8,300.00
02/14/2011	11564	Delta Partners, LLC	7,500.00
02/14/2011	11565	CA-Dept Of Public Health	1,984.00
02/14/2011	11566	Krieger & Stewart	69,415.51
02/14/2011	11567	Merlin Johnson Construction, In	28,600.00

## Check Register - February 2011

<u>Check Date</u>	<u>Check Number</u>	<u>Name</u>	<u>Check Amount</u>
02/14/2011	11568	One Stop Landscape Supply Inc	23,404.00
02/14/2011	11569	Platinum Advisors, LLC	5,000.00
02/14/2011	11570	RMC Water and Environment	8,029.25
02/14/2011	11571	Separation Processes, Inc.	2,100.00
02/14/2011	11572	VOID CHECK	0.00
02/14/2011	11573	VOID CHECK	0.00
02/14/2011	11574	Wildermuth Environmental	1,500.00
02/14/2011	11575	Sukut Construction, Inc.	440,789.71
02/14/2011	11576	Union Bank Of California	48,976.63
02/14/2011	11577	Sukut Construction, Inc.	180,240.71
02/14/2011	11578	Union Bank Of California	20,026.75
02/14/2011	11579	Ralph C. Casas	63.00
02/14/2011	11580	Ameripride Uniform Services	489.34
02/14/2011	11581	AT&T Mobility	1,467.07
02/14/2011	11582	Best Home Center	3.47
02/14/2011	11583	CA-ARB/PERP	575.00
02/14/2011	11584	Crown Ace Hardware - Yucaipa	685.08
02/14/2011	11585	Fedex	22.85
02/14/2011	11586	Fox Occupational Medical Cente	50.00
02/14/2011	11587	House Of Quality, Parts Plus	2,090.12
02/14/2011	11588	VOID CHECK	0.00
02/14/2011	11589	Kelly Services, Inc.	1,267.92
02/14/2011	11590	Konica Minolta Business Soluti	340.10
02/14/2011	11591	Soboba Band of Luiseno Indians	4,933.50
02/14/2011	11592	Southern California Gas Compan	405.32
02/14/2011	11593	Association of San Bernardino	70.00
02/14/2011	11594	Tokay Software	270.00
02/14/2011	11595	United Contractors	1,710.00
02/14/2011	11596	Verizon	1,312.11
02/14/2011	11597	Airgas Safety Inc.	638.58
02/14/2011	11598	All American Sewer Tools	270.94
02/14/2011	11599	Avista Technologies, Inc.	535.52
02/14/2011	11600	Bioscience Inc.	12,566.40
02/14/2011	11601	Brenntag Pacific, Inc	6,467.59
02/14/2011	11602	Clinical Laboratory of San Ber	547.50
02/14/2011	11603	Cortech Engineering	6,475.81
02/14/2011	11604	Crown Ace Hardware - Yucaipa	425.77
02/14/2011	11605	Harbor Freight Tools	162.36
02/14/2011	11606	VOID CHECK	0.00
02/14/2011	11607	Inland Water Works Supply Co.	7,201.10
02/14/2011	11608	Innerline Engineering	2,500.00
02/14/2011	11609	JR Freeman Co. Inc.	482.68
02/14/2011	11610	Kemira Water Solutions, Inc.	14,641.70
02/14/2011	11611	Merit Oil Company	4,859.95
02/14/2011	11612	NetComp Technologies, Inc.	810.00
02/14/2011	11613	Oily's Automotive Service & Re	511.41
02/14/2011	11614	Polydyne Inc.	2,626.31
02/14/2011	11615	Pro-Pipe & Supply, Inc.	743.34
02/14/2011	11616	Q Versa, LLC	5,244.25
02/14/2011	11617	Red Alert Special Couriers	2,228.89
02/14/2011	11618	Redlands-Yucaipa Rentals Inc.	26.67
02/14/2011	11619	Star Fleet Filtration, Inc.	396.00
02/14/2011	11620	Sukut Construction, Inc.	4,800.00
02/14/2011	11621	Test America Laboratories, Inc	290.00
02/14/2011	11622	YRC, Inc.	312.78

## Check Register - February 2011

<u>Check Date</u>	<u>Check Number</u>	<u>Name</u>	<u>Check Amount</u>
02/14/2011	11623	Hewlett-Packard Co.-Public Sec	1,692.15
02/16/2011	11624	CANNON PACIFIC	1,250.60
02/16/2011	11625	HUSTON, LINDA	69.60
02/22/2011	11626	Wells Fargo Bank -Corporate Tr	1,014,587.36
02/22/2011	11627	Robert Austin	650.00
02/22/2011	11628	AWWA CA-NV (Rancho Cucamonga)	80.00
02/22/2011	11629	CA-OCP HEALTH SERVICES	60.00
02/22/2011	11630	Ameripride Uniform Services	449.28
02/22/2011	11631	Coverall North America, Inc.	1,021.00
02/22/2011	11632	Crider Public Relations, Inc.	807.50
02/22/2011	11633	Fedex	85.68
02/22/2011	11634	First American Corelogic, Inc.	300.00
02/22/2011	11635	InfoSend, Inc.	5,022.29
02/22/2011	11636	Kelly Services, Inc.	587.00
02/22/2011	11637	Timothy F. Moore	985.00
02/22/2011	11638	RIV CNTY-Registrar Of Voters	460.00
02/22/2011	11639	The Counseling Team Internatio	780.00
02/22/2011	11640	The Gas Company	15.78
02/24/2011	11641	Advance Refrigeration & Ice Sy	192.89
02/24/2011	11642	Walter L. Ferar	471.42
02/24/2011	11643	Air & Hose Source, Inc.	11.96
02/24/2011	11644	All American Sewer Tools	3,068.58
02/24/2011	11645	Bioscience Inc.	12,108.85
02/24/2011	11646	Brenntag Pacific, Inc	8,722.02
02/24/2011	11647	Cal's Auto Repair & Towing	200.00
02/24/2011	11648	Center Electric	1,589.14
02/24/2011	11649	CINTAS First Aid & Safety	213.74
02/24/2011	11650	Clinical Laboratory of San Ber	421.00
02/24/2011	11651	Victor James Valenti	4,470.48
02/24/2011	11652	Custom Metal Fabrication	722.10
02/24/2011	11653	Dionex Corporation	1,169.07
02/24/2011	11654	Fisher Scientific Co.	217.37
02/24/2011	11655	Grainger	491.26
02/24/2011	11656	Hach Company	735.27
02/24/2011	11657	JR Freeman Co. Inc.	163.13
02/24/2011	11658	MCR Technologies, Inc.	1,161.07
02/24/2011	11659	Nagem, Inc.	525.00
02/24/2011	11660	NCL Of Wisconsin Inc	496.92
02/24/2011	11661	Oily's Automotive Service & Re	677.83
02/24/2011	11662	P & R Paper Supply Co., Inc.	49.08
02/24/2011	11663	Pro-Pipe & Supply, Inc.	128.08
02/24/2011	11664	Red Alert Special Couriers	1,112.22
02/24/2011	11665	Laura Valdivieso	135.00
02/24/2011	11666	San Bernardino County Flood Co	70.00
02/24/2011	11667	Schaner's WasteWater Prod., In	2,404.74
02/24/2011	11668	Siemens Water Technologies Cor	848.97
02/24/2011	11669	Sukut Construction, Inc.	1,200.00
02/24/2011	11670	Test America Laboratories, Inc	150.00
02/24/2011	11671	Gerald L. Gregory	150.00
02/24/2011	11672	University of Southern CA	110.81
02/24/2011	11673	HD Supply Facilities Maintenanc	220.87
02/24/2011	11674	ZEP Manufacturing Company	656.27
02/25/2011	11675	PAYROLL CHECK	1,951.33
02/25/2011	11676	CA-PERS 457 Deferred Comp	11,740.01
02/25/2011	11677	CA-Franchise Tx Bd-Vehicle Reg	256.00

## Check Register - February 2011

<u>Check Date</u>	<u>Check Number</u>	<u>Name</u>	<u>Check Amount</u>
02/25/2011	11678	Public Employees' Retirement S	26,378.78
02/25/2011	11679	Hong Nelson	125.00
02/25/2011	11680	Katherine Kostelecky	500.00
02/25/2011	11681	United Student Aid Funds, Inc.	168.43
02/25/2011	11682	IBEW Local 1436	16.00
02/25/2011	11683	Inland Empire Resource Conserv	716.81
02/25/2011	11684	NetComp Technologies, Inc.	425.54
02/25/2011	11685	Pro-Pipe & Supply, Inc.	11.37
02/25/2011	11686	Separation Processes, Inc.	6,392.31
02/25/2011	11687	Verizon	127.82
02/25/2011	11688	Inland Empire Resource Conserv	7,500.00
02/25/2011	11689	Center Electric	4,562.48
02/25/2011	11690	G&G Environmental Compliance, I	2,568.51
02/25/2011	11691	VOID CHECK	0.00
02/25/2011	11692	Inland Water Works Supply Co.	1,770.69
02/25/2011	11693	James John Brothers	14,584.00
02/25/2011	11694	Godwin Pumps	7,079.42
02/25/2011	11695	American Family Life Assurance	2,420.23
02/25/2011	11696	Cypress Insurance Company	18,062.00
<b>February 2011 Check Register Total</b>			<b>2,388,942.79</b>

# BOARD REPORTS

Sent via email only: cfogus@yvwd.dist.ca.us

February 23, 2011

Yucaipa Valley Water District Board Members  
12770 2nd Street  
Yucaipa, CA 92399



Dear Board Member:

As part of a long-term strategic planning process, the Yucaipa City Council has directed staff to proceed with a Citywide Public Facilities Needs Assessment. The overall objective for this project is to assess opportunities for new or expanded community facilities and/or programs operating within our City. Part of this process includes a survey of existing programs and facilities; including cultural facilities, activity centers, and others which the City currently supports, occupies, or owns.

The purpose of this letter is to invite interested Yucaipa residents to participate in the next step of this process. Serving as a member on the Yucaipa Valley Water District Board, you were specifically selected because you and your organization play a key role in our community, and you have shown a commitment to it. We are planning a series of Focus Group workshops at which you can join others in the community in defining the City's future program and related facility needs. We will conduct six such workshops, with the aim of canvassing a very wide range of public opinion. The bottom line is that you live here and contribute to this community. Considering City programs and facilities, we are asking the question: "What are we missing?"

The objectives of the workshop are (1) to provide broad awareness of this project, (2) to obtain ideas and opinions from the workshop attendees regarding possible options for City supported programs and facilities, and (3) to discuss criteria of importance to you, by which the City Council may ultimately prioritize the many options that will come out of this process. We expect to conduct a very focused meeting of about 90 minutes.

The City is taking a focus group approach so that we might better obtain a diversity of viewpoints in a smaller workshop setting. Note that the goal of the workshop is to gather your opinion regarding general City-wide programs and facilities, and not to focus on those which are specific to your group's activities. We are using the focus group approach as a means by which persons of diverse public involvement can have an active voice in the process of helping the City examine options which serve the entire community.

If you plan on attending, we ask that you think about possible programs and facilities in advance of the workshop. Examples of existing programs/facilities in Yucaipa today include, but are not limited to, the senior center, community theater facilities, art gallery or studio facilities, the teen center, museum and cultural facilities, the Yucaipa Branch Library. Some of these examples listed above are owned and operated by other entities; however they provide facilities and/or

---

City of Yucaipa

34272 Yucaipa Boulevard, Yucaipa, CA 92399-9950  
909/797-2489 FAX 909/790-9203 www.yucaipa.org

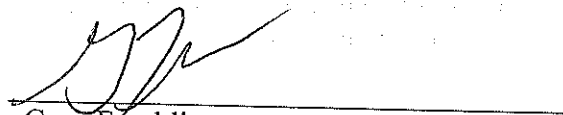
programs to the residents of Yucaipa. New options for the six focus groups to consider may include expanding or adding new variations to any of these existing facilities and/or programs, or adding something entirely different, such as a business resources center or a cultural arts center. The City has already conducted a study for sports fields and parks, and therefore, athletic facilities and programs are not being considered in this current project.

You have been selected to be a part of Focus Group 2, which is scheduled to meet on Thursday, March 3, 2011 from 3:00 PM to 4:30 PM at the Yucaipa Community Center. Your opinion matters and we would very much like for you to consider participating. If you are interested in participating in this very important civic project, and would like to attend the workshop, please RSVP to Felina Rosales at 909-797-2489 ext. 221 or by e-mail at [frosales@yucaipa.org](mailto:frosales@yucaipa.org) no later than Tuesday, March 1, 2011.

Sincerely,



Jennifer Shankland  
Director of General Services/City Clerk



Greg Franklin  
Director of Administrative Services



# Yucaipa Valley Water District

## **Notice and Agenda of a Board Workshop** Tuesday, March 8, 2011 at 4:00 p.m.

---

MEETING LOCATION: District Administration Building  
12770 Second Street, Yucaipa

MEMBERS OF THE BOARD: Director Ian Cuthbertson, Division 1  
Director Bruce Granlund, Division 2  
Director Jay Bogh, Division 3  
Director Lonni Granlund, Division 4  
Director Hank Wochholz, Division 5

---

- I. Call to Order
  - II. Public Comments: At this time, members of the public may address the Board of Directors on matters within its jurisdiction; however, no action or significant discussion may take place on any item not on the agenda. To provide comments on specific agenda items, please complete a speaker's request form and provide that form to the Board Secretary prior to the commencement of the Board meeting.
  - III. Staff Comments
  - IV. Workshop Presentations
    - A. Presentation of a Proposed Allocation Methodology for the 17,300 Acre Feet of Table "A" Water of the San Gorgonio Pass Water Agency [[Workshop Memorandum No. 11-029 - Page 3 of 76](#)]
    - B. Presentation of the Proposed Park on the Northwest Corner of Wildwood Canyon Road and 5<sup>th</sup> Street, Yucaipa [[Workshop Memorandum No. 11-030 - Page 6 of 76](#)]
  - V. Capital Improvement Projects
    - A. Status Report on the Construction of the Yucaipa Valley Regional Brineline [[Workshop Memorandum No. 11-031 - Page 8 of 76](#)]
    - B. Proposed Capital Improvement Projects for Salinity Management in the Yucaipa Valley [[Workshop Memorandum No. 11-032 - Page 13 of 76](#)]
    - C. Completion of Recycled Water Facilities North of Yucaipa Boulevard, Yucaipa [[Workshop Memorandum No. 11-033 - Page 15 of 76](#)]
- 

Any person with a disability who requires accommodation in order to participate in this meeting should telephone Chelsie Fogus at (909) 797-5118, at least 48 hours prior to the meeting in order to make a request for a disability-related modification or accommodation.

Materials related to an item on this agenda submitted to the Board of Directors after distribution of the workshop packet are available for public inspection during normal business hours at the District office located at 12770 Second Street, Yucaipa. Meeting material may also be available on the District's website at [www.yvwd.dst.ca.us](http://www.yvwd.dst.ca.us)

VI. Development Related Issues

- A. Discussion Regarding the Implementation of Facility Capacity Charge Modifications for Dual Plumbed Residential Homes [[Workshop Memorandum No. 11-034 - Page 17 of 76](#)]
- B. Discussion Regarding a Pre-Development Agreement for the Cherry Valley Plaza Development (Parcel Map No. 35691), Calimesa [[Workshop Memorandum No. 11-035 - Page 31 of 76](#)]

VII. Administrative Issues

- A. Discussion Regarding the Unaudited Financial Report for February 2011 [[Workshop Memorandum No. 11-036 - Page 40 of 76](#)]
- B. Update on the Status of the Mitigated Negative Declaration for the Mountainview Power Generating Station Brineline Connection [[Workshop Memorandum No. 11-037 - Page 68 of 76](#)]
- C. Discussion Regarding the Authorization to Purchase Two Dump Trucks for the Public Works Department [[Workshop Memorandum No. 11-038 - Page 69 of 76](#)]
- D. Discussion Regarding Quotations from Potential Medical Insurance Providers [[Workshop Memorandum No. 11-039 - Page 75 of 76](#)]

VIII. Director Comments

IX. Adjournment



Yucaipa Valley Water District

## **Notice and Agenda of a Board Workshop Site Inspection & Tour of the Reservoir R-12.4 Property**

Wednesday, March 9, 2011 at 4:00 p.m.

---

MEETING LOCATION: Intersection of Singleton Road and Condit Avenue  
in Calimesa (see attached map)

- I. Call to Order
- II. **Public Comments:** At this time, members of the public may address the Board of Directors on matters within its jurisdiction. To provide comments on specific agenda items, please complete a speaker's request form and provide the completed form to the Board Secretary prior to the start of the workshop.
- III. Tour and Inspection of the Proposed Reservoir R-12.4 Site
- IV. Tour and Inspection of the Proposed Reservoir R-11.4 Site
- V. Director Comments
- VI. Adjournment

---

Any person with a disability who requires accommodation in order to participate in this meeting should telephone Chelsie Fogus at (909) 797-5118, at least 48 hours prior to the meeting in order to make a request for a disability-related modification or accommodation.





Yucaipa Valley Water District

**Notice and Agenda of a Board Workshop  
Site Inspection & Tour of the  
Western Riverside County Regional  
Wastewater Treatment Plant**

Tuesday, March 15, 2011 at 11:00 a.m.

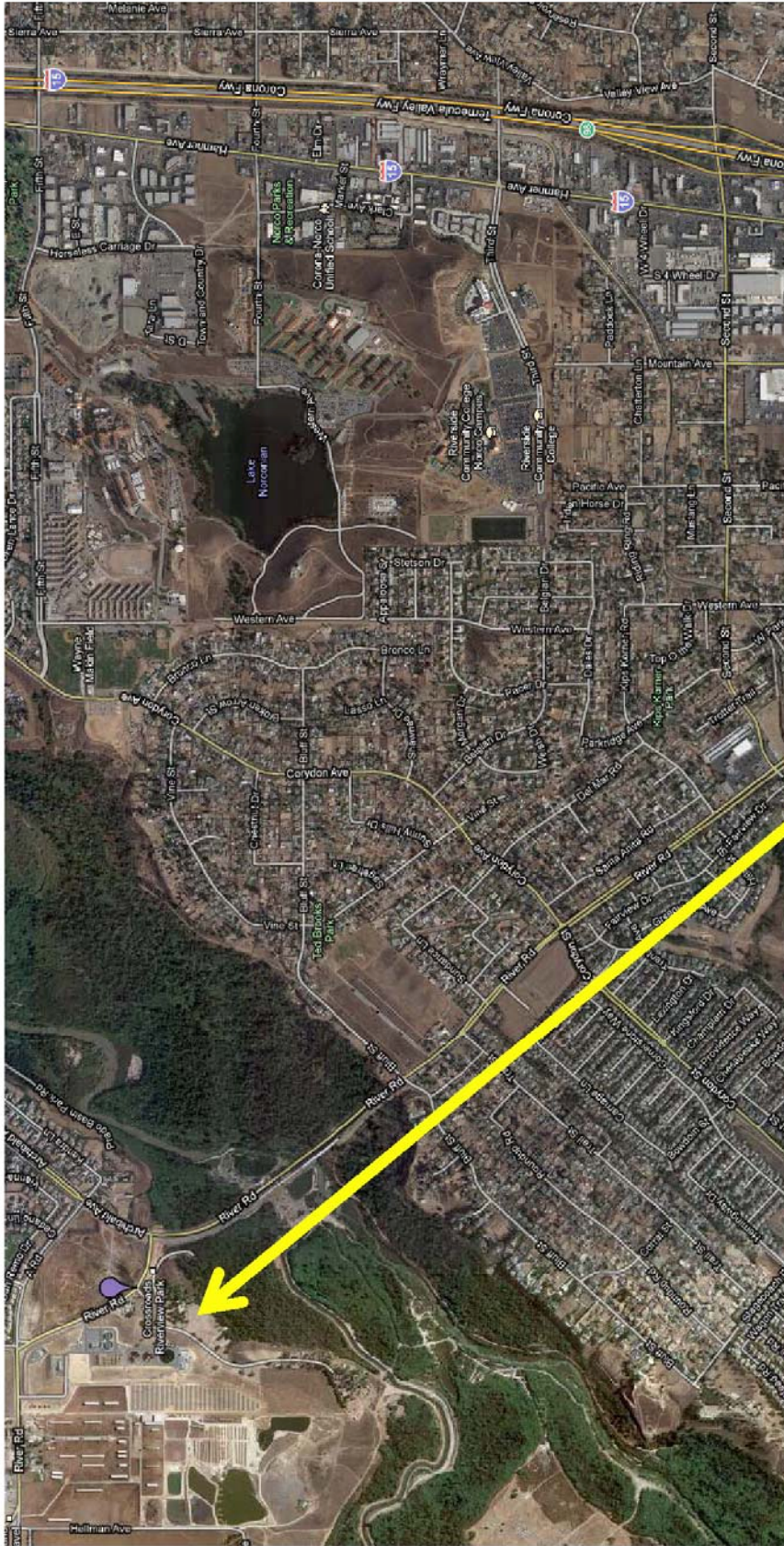
---

MEETING LOCATION: 14634 River Road, Corona, California  
(see attached map)

- I. Call to Order
- II. Public Comments: At this time, members of the public may address the Board of Directors on matters within its jurisdiction. To provide comments on specific agenda items, please complete a speaker's request form and provide the completed form to the Board Secretary prior to the start of the workshop.
- III. Tour and Inspection of the Wastewater Treatment Plant and Solar Power Facility
- IV. Director Comments
- V. Adjournment

---

Any person with a disability who requires accommodation in order to participate in this meeting should telephone Chelsie Fogus at (909) 797-5118, at least 48 hours prior to the meeting in order to make a request for a disability-related modification or accommodation.



**Western Riverside County Regional  
Wastewater Treatment Plant**  
14634 River Road, Corona, California



**Economic Development Advisory Committee  
Agenda  
Regular Meeting**

**March 10, 2011 - 5:00 PM**

---

**Community Meeting Room - Yucaipa City Hall  
34272 Yucaipa Boulevard, Yucaipa, California**

---

**ANY PUBLIC WRITINGS DISTRIBUTED BY THE CITY TO AT LEAST A MAJORITY OF THE COMMITTEE MEMBERS REGARDING ANY ITEM ON THIS REGULAR MEETING AGENDA WILL BE MADE AVAILABLE AT THE PUBLIC SERVICE COUNTER AT CITY HALL, 34272 YUCAIPA BOULEVARD, DURING NORMAL BUSINESS HOURS.**

- I. Call to Order**
- II. Approval of Minutes (January 13, 2011)**
- III. Public Comment**
- IV. Review of Current Development**
- V. Old Business**
  - 1. Uptown Dedication and Music Festival**
  - 2. Jazz Groups at Iris Festival**
- VI. New Business**
  - 1. Business Attraction Quarterly**
- VII. Round Table**
- VIII. Adjourn**

**Next meeting is scheduled for May 12, 2011**

# STAFF REPORT

# DISCUSSION ITEMS



**Date:** March 16, 2011 **Job:** Not Applicable

**Prepared By:** Vicky Elisalda, Controller **G/L:** Not Applicable

**Subject:** Presentation of the Unaudited Financial Report for February 2011

**Recommendation:** That the Board receives and files the unaudited financial report as presented.

The following unaudited financial report has been prepared by the Administrative Department for your review. The report has been divided into six sections to clearly disseminate information pertaining to the financial status of the District. Please remember that the following financial information has not been audited.

Cash Fund Balance Report

The Cash Fund Balance Report provides a summary of how the total amount of funds maintained by financial institutions is distributed throughout the enterprise and non-enterprise funds of the District. A summary of the report is as follows:

<b>Fund Source</b>	<b>Operating Funds</b>	<b>Restricted Funds</b>	<b>Total Funds</b>
Water Division	(\$293,254.44)	\$4,924,213.37	\$4,630,958.93
Sewer Division	\$421,350.35	\$5,693,528.47	\$6,114,878.82
Recycled Division	(\$1,123,433.21)	\$593,791.49	(\$529,641.72)
<b>Total</b>	<b>(\$995,337.30)</b>	<b>\$11,211,533.33</b>	<b>\$10,216,196.03</b>

Most of the funds reflected in the Cash Fund Balance Report are designated for specific purposes and are therefore restricted, either by law or by District policy.

Check Register

The check register lists each check processed during the month of February 2011. The District processed 239 checks during the month of February for a total sum of \$2,388,924.79. All checks are reviewed by District staff for accuracy and completeness, and usually signed by the General Manager and one Director, but may be signed by two Directors.

The Controller will make any check, invoice or supporting documentation available for review to any board member upon request.

### Financial Account Information

The District currently deposits all revenue received into the Deposit Checking account. The General Checking account is used as a sole processing account for all District checks and electronic payroll. The Investment Checking account is used for the purchase and redemption of US treasury notes and bills. The US treasury notes and bills are booked at cost.

The LAIF investment account is a pooled money account administered by the State of California. Additional information on the LAIF account is provided below in the investment summary report.

### Investment Summary

The investment summary report illustrates the District's investments in US treasury notes and bills in addition to the investments held by the Local Agency Investment Fund or LAIF. The yields for the treasury notes and bills are provided for each individual transaction. The historical annual yield for funds invested with LAIF is also provided.

Separate pooled money investment reports prepared by the State of California are maintained by the District and available for review.

### Monthly Revenue Allocation

During the month of February 2011 the District received a sum total of \$1,368,278.45 in revenues from the following categories:

- A total of \$1,227,475.16 was received from 13,561 customers for utility bill payments. This is the total amount of utility bill payments received from water, sewer and recycled services.
- A total of \$814.00 was received for construction meter deposits, customer deposits and Internet fee payments.
- A total of \$134,994.29 was received from miscellaneous water related activities (other than utility bill charges). The District received \$65,392.03 from San Bernardino County property taxes and \$2,523.82 from Riverside County property taxes.
- A total of \$4,500.00 was received from miscellaneous sewer related activities (other than utility bill charges).
- A total of \$495.00 received from miscellaneous recycled related activities (other than utility bill charges).

### Fiscal Year 2011 Budget Status

The revenue and expense budget status for the 2011 Fiscal Year is provided for your review.

**Summary of Revenue Budget  
As of February 28, 2011 (62% of Budget Cycle)**

<u>Division</u>	<u>Budget Amount</u>	<u>Current Month</u>	<u>Year-To-Date</u>	<u>Percentage</u>
Water	12,403,410	576,155	7,093,095	57.2
Sewer	10,394,500	829,023	6,576,031	63.3
Recycled Water	411,275	9,462	277,777	67.5
<b>District Revenue</b>	<b>23,209,185</b>	<b>1,414,640</b>	<b>13,946,903</b>	<b>60.1</b>

**Summary of Water Budget  
As of February 28, 2011 (62% of Budget Cycle)**

<u>Department</u>	<u>Budget Amount</u>	<u>Current Month</u>	<u>Year-To-Date</u>	<u>Percentage</u>
Water Resources	4,217,615	71,691	2,608,670	61.9
Public works	2,017,000	120,012	1,121,672	55.6
Administration	2,992,576	174,253	1,730,349	57.8
Long Term Debt	3,176,219	0	1,916,406	60.3
Asset Acquisition	245,000	0	0	0.0
<b>TOTAL</b>	<b>12,648,410</b>	<b>365,956</b>	<b>7,377,097</b>	<b>58.3</b>

**Summary of Sewer Budget  
As of February 28, 2011 (62% of Budget Cycle)**

<u>Department</u>	<u>Budget Amount</u>	<u>Current Month</u>	<u>Year-To-Date</u>	<u>Percentage</u>
Treatment	3,038,150	152,402	1,984,389	65.3
Administration	3,626,030	252,892	2,393,701	66.0
Environmental Control	786,940	57,383	466,253	59.2
Long Term Debt	2,923,670	0	2,923,669	100.0
Asset Acquisition	19,710	221	6,038	30.6
<b>TOTAL</b>	<b>10,394,500</b>	<b>462,898</b>	<b>7,774,050</b>	<b>74.8</b>

**Summary of Recycled Water Budget  
As of February 28, 2011 (62% of Budget Cycle)**

<u>Department</u>	<u>Budget Amount</u>	<u>Current Month</u>	<u>Year-To-Date</u>	<u>Percentage</u>
Administration	411,275	25,191	379,968	92.4
<b>TOTAL</b>	<b>411,275</b>	<b>25,191</b>	<b>379,968</b>	<b>92.4</b>
<b>District Expenses</b>	<b>23,454,185</b>	<b>854,045</b>	<b>15,531,115</b>	<b>66.2</b>

Investment Policy Disclosure

The District is currently compliant with the portfolio of its Investment Policy and State Law.

The District is using Sandy Gage with Merrill Lynch Wealth Management (Bank of America Corporation) for Treasury investments. The District expects to meet its expenditure requirements for the next six months.

Questions or Comments

If you have any questions about a particular budget account, please do not hesitate to contact the Controller directly. If you need additional information, the members of the Administrative Department would be happy to provide you with any detailed information you may desire.

## Cash Fund Balance Report - February 2011

Water Division	GL#	Balance
Project Fund - Encumbered	02-10215	\$ 720,828.09
ID 1 Construction Funds	02-10216	\$ 293,145.85
ID 2 Construction Funds	02-10217	\$ 80,409.31
Depreciation Reserves	02-10310	\$ 2,433,450.58
Sustainability Fund	02-10313	\$ 28,927.80
Rate Stabilization Fund	02-10314	\$ 468,045.21
Imported Water Fund - MUNI	02-10315	\$ (720,963.35)
Imported Water Fund - SGPWA	02-10316	\$ 163,781.73
FCC - Debt Service YVRWFF Phase I	02-10401	\$ 15,712.46
FCC - Future YVRWFF Phase II & III	02-10403	\$ 73,233.09
FCC - Recycled System	02-10410	\$ 113,280.57
FCC - Booster Pumping Plants	02-10411	\$ 124,669.48
FCC - Pipeline Facilities	02-10412	\$ 622,069.11
FCC - Water Storage Reservoirs	02-10413	\$ 507,623.44
Operating Funds:	--	--
Checking Account	02-11001	\$ 30,000.00
LAIF	02-11019	\$ 32,863.84
Savings	02-11020	\$ (356,118.28)
<b>Total Water Division</b>		<b>\$ 4,630,958.93</b>

Sewer Division	GL#	Balance
Project Fund - Encumbered	03-10215	\$ 751,089.00
Depreciation Reserves	03-10310	\$ 2,377,726.76
Rate Stabilization Fund	03-10314	\$ 1,463,595.00
FCC - Debt Service WWTP Expansion & Upgrade	03-10405	\$ 370,478.95
FCC - Future WWTP Expansion	03-10407	\$ 222,008.03
FCC - Sewer Interceptors	03-10415	\$ 110,589.86
FCC - Lift Stations	03-10416	\$ 54,572.50
FCC - Effluent Disposal Facilities	03-10417	\$ 72,436.29
FCC - Salt Mitigation Facilities	03-10418	\$ 271,032.08
Operating Funds:	--	--
Savings	03-11020	\$ 421,350.35
<b>Total Wastewater Division</b>		<b>\$ 6,114,878.82</b>

Recycled Water Division	GL#	Balance
Depreciation Reserves	04-10310	\$ 437,713.49
FCC - Recycled System	04-10410	\$ 13,286.93
FCC - Booster Pumping Plants	04-10411	\$ 14,297.75
FCC - Pipeline Facilities	04-10412	\$ 71,152.50
FCC - Water Storage Reservoirs	04-10413	\$ 57,340.82
Operating Funds:	--	--
Savings	04-11020	\$ (1,123,433.21)
<b>Total Recycled Water Division</b>		<b>\$ (529,641.72)</b>

**DISTRICT TOTAL**    **\$ 10,216,196.03**

Future Obligations	Due Date	Amount
2004A Bond Payment - Water Division	02/23/2011	\$ 1,014,812.50
SBVMWD - SARI Pipeline Capacity	06/01/2011	\$ 19,710.00
2004A Bond Payment - Water Division	08/27/2011	\$ 1,934,812.50
SRF Payment - Sewer Division	09/10/2011	\$ 2,923,688.75

## Check Register - February 2011

<u>Check Date</u>	<u>Check Number</u>	<u>Name</u>	<u>Check Amount</u>
02/01/2011	11458	BofA Credit Card	1,022.94
02/01/2011	11459	BofA Credit Card	1,230.57
02/01/2011	11460	BofA Credit Card	757.68
02/01/2011	11461	Ralph C. Casas	63.00
02/01/2011	11462	Ameripride Uniform Services	973.40
02/01/2011	11463	American Water Works Assoc.	1,080.00
02/01/2011	11464	Coverall North America, Inc.	1,021.00
02/01/2011	11465	CWEA	900.00
02/01/2011	11466	Kelly Services, Inc.	587.00
02/01/2011	11467	Konica Minolta Business Soluti	295.00
02/01/2011	11468	Gregory N. Godwin	150.00
02/01/2011	11469	SCCI, Inc.	350.00
02/01/2011	11470	Verizon	1,628.69
02/01/2011	11471	Yucaipa Disposal, Inc.	313.50
02/01/2011	11472	Standard Insurance Company	2,135.60
02/01/2011	11473	Western Dental Services, Inc.	305.49
02/01/2011	11474	Anthem Blue Cross L and H	359.10
02/01/2011	11475	Standard Insurance Company	2,879.38
02/01/2011	11476	Aetna Health of California	38,078.55
02/01/2011	11477	Standard Insurance Vision Plan	390.40
02/01/2011	11478	MetLife Small Business Center	82.16
02/01/2011	11479	AW Associates, Inc.	450.00
02/01/2011	11480	Brenntag Pacific, Inc	10,146.40
02/01/2011	11481	Consolidated Electrical Distri	94.50
02/01/2011	11482	Center Electric	3,085.77
02/01/2011	11483	Donegan Tree Service	950.00
02/01/2011	11484	Evans-Hydro Inc.	10,426.88
02/01/2011	11485	Gierlich-Mitchell Inc	1,800.00
02/01/2011	11486	Grainger	397.68
02/01/2011	11487	Alan L. Grubel Automotive Inc.	490.80
02/01/2011	11488	Hach Company	1,852.60
02/01/2011	11489	Inland Water Works Supply Co.	269.70
02/01/2011	11490	James John Brothers	8,080.00
02/01/2011	11491	Johnson Power Systems	7,426.84
02/01/2011	11492	JR Freeman Co. Inc.	7,169.30
02/01/2011	11493	Merit Oil Company	4,581.02
02/01/2011	11494	Nagem, Inc.	1,007.07
02/01/2011	11495	NetComp Technologies, Inc.	3,246.24
02/01/2011	11496	Oily's Automotive Service & Re	877.98
02/01/2011	11497	Pro-Pipe & Supply, Inc.	790.34
02/01/2011	11498	Q Versa, LLC	8,213.12
02/01/2011	11499	Siemens Water Technologies Cor	144.30
02/07/2011	11500	Groundwater Resources Associat	300.00
02/07/2011	11501	ADS, LLC	2,634.00
02/07/2011	11502	American Messaging Services, L	14.16
02/07/2011	11503	Crider Public Relations, Inc.	1,445.00
02/07/2011	11504	First American Data Tree, LLC	54.65
02/07/2011	11505	InfoSend, Inc.	3,384.63
02/07/2011	11506	VOID CHECK	0.00
02/07/2011	11507	Leroy's Landscape Services	2,955.00
02/07/2011	11508	NAPA Genuine Parts Company	51.71
02/07/2011	11509	Northrop Gruman-IS	2,575.00
02/07/2011	11510	Sims Welding & Supply Co., Inc	178.91
02/07/2011	11511	The Gas Company	2,087.74
02/07/2011	11512	VOID CHECK	0.00

## Check Register - February 2011

<u>Check Date</u>	<u>Check Number</u>	<u>Name</u>	<u>Check Amount</u>
02/07/2011	11513	George F. Siddle	118.25
02/07/2011	11514	Verizon	127.22
02/07/2011	11515	HOOD, BRAD	26.08
02/07/2011	11516	ALFA GROUP	81.98
02/07/2011	11517	WYATT, KELLY	48.96
02/07/2011	11518	BEAVER, WILLIAM	50.66
02/07/2011	11519	G-7 REALTY INC	135.41
02/07/2011	11520	PORTWAY, TIMOTHY	40.00
02/07/2011	11521	Walter L. Ferar	1,882.99
02/07/2011	11522	Brenntag Pacific, Inc	12,816.56
02/07/2011	11523	Cemex Inc. USA	1,778.90
02/07/2011	11524	Center Electric	1,574.02
02/07/2011	11525	Gallade Chemical	902.08
02/07/2011	11526	Gierlich-Mitchell Inc	3,624.28
02/07/2011	11527	Godwin Pumps	6,882.79
02/07/2011	11528	Grainger	424.98
02/07/2011	11529	Hach Company	841.66
02/07/2011	11530	Harbor Freight Tools	185.28
02/07/2011	11531	Harrington Ind. Plastic, LLC	279.41
02/07/2011	11532	Hemet Valley Tool & Supply	193.58
02/07/2011	11533	Inland Water Works Supply Co.	674.25
02/07/2011	11534	Innerline Engineering	2,500.00
02/07/2011	11535	JR Freeman Co. Inc.	952.02
02/07/2011	11536	Matich Corp	2,063.39
02/07/2011	11537	MBC Applied Environmental Scie	1,200.00
02/07/2011	11538	Nagem, Inc.	112.50
02/07/2011	11539	P & R Paper Supply Co., Inc.	443.83
02/07/2011	11540	Red Alert Special Couriers	85.86
02/07/2011	11541	Siemens Water Technologies Cor	865.61
02/07/2011	11542	Gerald L. Gregory	150.00
02/07/2011	11543	HD Supply Facilities Maintenanc	511.81
02/11/2011	11544	PAYROLL CHECK	2,579.61
02/11/2011	11545	PAYROLL CHECK	758.28
02/11/2011	11546	CA-PERS 457 Deferred Comp	15,026.48
02/11/2011	11547	Center Electric	227.02
02/11/2011	11548	Lloyd Copelan Garage Doors	120.00
02/11/2011	11549	San Bernardino County Flood Co	120.00
02/11/2011	11550	Smart & Final Stores, LLC	294.03
02/11/2011	11551	Frances Webster	196.63
02/11/2011	11552	Central Communications	259.75
02/11/2011	11553	Krieger & Stewart	10,582.74
02/11/2011	11554	SHATTUCK JR, HOWARD	1,355.10
02/11/2011	11555	Yucaipa Disposal, Inc.	933.93
02/11/2011	11556	Public Employees' Retirement S	26,598.03
02/11/2011	11557	Hong Nelson	125.00
02/11/2011	11558	Katherine Kostelecky	500.00
02/11/2011	11559	United Student Aid Funds, Inc.	168.43
02/11/2011	11560	IBEW Local 1436	352.00
02/11/2011	11561	Underground Service Alert Of S	127.50
02/14/2011	11562	Aklufi & Wysocki	26,547.00
02/14/2011	11563	DDB Engineering Inc.	8,300.00
02/14/2011	11564	Delta Partners, LLC	7,500.00
02/14/2011	11565	CA-Dept Of Public Health	1,984.00
02/14/2011	11566	Krieger & Stewart	69,415.51
02/14/2011	11567	Merlin Johnson Construction, In	28,600.00

## Check Register - February 2011

<u>Check Date</u>	<u>Check Number</u>	<u>Name</u>	<u>Check Amount</u>
02/14/2011	11568	One Stop Landscape Supply Inc	23,404.00
02/14/2011	11569	Platinum Advisors, LLC	5,000.00
02/14/2011	11570	RMC Water and Environment	8,029.25
02/14/2011	11571	Separation Processes, Inc.	2,100.00
02/14/2011	11572	VOID CHECK	0.00
02/14/2011	11573	VOID CHECK	0.00
02/14/2011	11574	Wildermuth Environmental	1,500.00
02/14/2011	11575	Sukut Construction, Inc.	440,789.71
02/14/2011	11576	Union Bank Of California	48,976.63
02/14/2011	11577	Sukut Construction, Inc.	180,240.71
02/14/2011	11578	Union Bank Of California	20,026.75
02/14/2011	11579	Ralph C. Casas	63.00
02/14/2011	11580	Ameripride Uniform Services	489.34
02/14/2011	11581	AT&T Mobility	1,467.07
02/14/2011	11582	Best Home Center	3.47
02/14/2011	11583	CA-ARB/PERP	575.00
02/14/2011	11584	Crown Ace Hardware - Yucaipa	685.08
02/14/2011	11585	Fedex	22.85
02/14/2011	11586	Fox Occupational Medical Cente	50.00
02/14/2011	11587	House Of Quality, Parts Plus	2,090.12
02/14/2011	11588	VOID CHECK	0.00
02/14/2011	11589	Kelly Services, Inc.	1,267.92
02/14/2011	11590	Konica Minolta Business Soluti	340.10
02/14/2011	11591	Soboba Band of Luiseno Indians	4,933.50
02/14/2011	11592	Southern California Gas Compan	405.32
02/14/2011	11593	Association of San Bernardino	70.00
02/14/2011	11594	Tokay Software	270.00
02/14/2011	11595	United Contractors	1,710.00
02/14/2011	11596	Verizon	1,312.11
02/14/2011	11597	Airgas Safety Inc.	638.58
02/14/2011	11598	All American Sewer Tools	270.94
02/14/2011	11599	Avista Technologies, Inc.	535.52
02/14/2011	11600	Bioscience Inc.	12,566.40
02/14/2011	11601	Brenntag Pacific, Inc	6,467.59
02/14/2011	11602	Clinical Laboratory of San Ber	547.50
02/14/2011	11603	Cortech Engineering	6,475.81
02/14/2011	11604	Crown Ace Hardware - Yucaipa	425.77
02/14/2011	11605	Harbor Freight Tools	162.36
02/14/2011	11606	VOID CHECK	0.00
02/14/2011	11607	Inland Water Works Supply Co.	7,201.10
02/14/2011	11608	Innerline Engineering	2,500.00
02/14/2011	11609	JR Freeman Co. Inc.	482.68
02/14/2011	11610	Kemira Water Solutions, Inc.	14,641.70
02/14/2011	11611	Merit Oil Company	4,859.95
02/14/2011	11612	NetComp Technologies, Inc.	810.00
02/14/2011	11613	Oily's Automotive Service & Re	511.41
02/14/2011	11614	Polydyne Inc.	2,626.31
02/14/2011	11615	Pro-Pipe & Supply, Inc.	743.34
02/14/2011	11616	Q Versa, LLC	5,244.25
02/14/2011	11617	Red Alert Special Couriers	2,228.89
02/14/2011	11618	Redlands-Yucaipa Rentals Inc.	26.67
02/14/2011	11619	Star Fleet Filtration, Inc.	396.00
02/14/2011	11620	Sukut Construction, Inc.	4,800.00
02/14/2011	11621	Test America Laboratories, Inc	290.00
02/14/2011	11622	YRC, Inc.	312.78

## Check Register - February 2011

<u>Check Date</u>	<u>Check Number</u>	<u>Name</u>	<u>Check Amount</u>
02/14/2011	11623	Hewlett-Packard Co.-Public Sec	1,692.15
02/16/2011	11624	CANNON PACIFIC	1,250.60
02/16/2011	11625	HUSTON, LINDA	69.60
02/22/2011	11626	Wells Fargo Bank -Corporate Tr	1,014,587.36
02/22/2011	11627	Robert Austin	650.00
02/22/2011	11628	AWWA CA-NV (Rancho Cucamonga)	80.00
02/22/2011	11629	CA-OCP HEALTH SERVICES	60.00
02/22/2011	11630	Ameripride Uniform Services	449.28
02/22/2011	11631	Coverall North America, Inc.	1,021.00
02/22/2011	11632	Crider Public Relations, Inc.	807.50
02/22/2011	11633	Fedex	85.68
02/22/2011	11634	First American Corelogic, Inc.	300.00
02/22/2011	11635	InfoSend, Inc.	5,022.29
02/22/2011	11636	Kelly Services, Inc.	587.00
02/22/2011	11637	Timothy F. Moore	985.00
02/22/2011	11638	RIV CNTY-Registrar Of Voters	460.00
02/22/2011	11639	The Counseling Team Internatio	780.00
02/22/2011	11640	The Gas Company	15.78
02/24/2011	11641	Advance Refrigeration & Ice Sy	192.89
02/24/2011	11642	Walter L. Ferar	471.42
02/24/2011	11643	Air & Hose Source, Inc.	11.96
02/24/2011	11644	All American Sewer Tools	3,068.58
02/24/2011	11645	Bioscience Inc.	12,108.85
02/24/2011	11646	Brenntag Pacific, Inc	8,722.02
02/24/2011	11647	Cal's Auto Repair & Towing	200.00
02/24/2011	11648	Center Electric	1,589.14
02/24/2011	11649	CINTAS First Aid & Safety	213.74
02/24/2011	11650	Clinical Laboratory of San Ber	421.00
02/24/2011	11651	Victor James Valenti	4,470.48
02/24/2011	11652	Custom Metal Fabrication	722.10
02/24/2011	11653	Dionex Corporation	1,169.07
02/24/2011	11654	Fisher Scientific Co.	217.37
02/24/2011	11655	Grainger	491.26
02/24/2011	11656	Hach Company	735.27
02/24/2011	11657	JR Freeman Co. Inc.	163.13
02/24/2011	11658	MCR Technologies, Inc.	1,161.07
02/24/2011	11659	Nagem, Inc.	525.00
02/24/2011	11660	NCL Of Wisconsin Inc	496.92
02/24/2011	11661	Oily's Automotive Service & Re	677.83
02/24/2011	11662	P & R Paper Supply Co., Inc.	49.08
02/24/2011	11663	Pro-Pipe & Supply, Inc.	128.08
02/24/2011	11664	Red Alert Special Couriers	1,112.22
02/24/2011	11665	Laura Valdivieso	135.00
02/24/2011	11666	San Bernardino County Flood Co	70.00
02/24/2011	11667	Schaner's WasteWater Prod., In	2,404.74
02/24/2011	11668	Siemens Water Technologies Cor	848.97
02/24/2011	11669	Sukut Construction, Inc.	1,200.00
02/24/2011	11670	Test America Laboratories, Inc	150.00
02/24/2011	11671	Gerald L. Gregory	150.00
02/24/2011	11672	University of Southern CA	110.81
02/24/2011	11673	HD Supply Facilities Maintenanc	220.87
02/24/2011	11674	ZEP Manufacturing Company	656.27
02/25/2011	11675	PAYROLL CHECK	1,951.33
02/25/2011	11676	CA-PERS 457 Deferred Comp	11,740.01
02/25/2011	11677	CA-Franchise Tx Bd-Vehicle Reg	256.00

## Check Register - February 2011

<u>Check Date</u>	<u>Check Number</u>	<u>Name</u>	<u>Check Amount</u>
02/25/2011	11678	Public Employees' Retirement S	26,378.78
02/25/2011	11679	Hong Nelson	125.00
02/25/2011	11680	Katherine Kostelecky	500.00
02/25/2011	11681	United Student Aid Funds, Inc.	168.43
02/25/2011	11682	IBEW Local 1436	16.00
02/25/2011	11683	Inland Empire Resource Conserv	716.81
02/25/2011	11684	NetComp Technologies, Inc.	425.54
02/25/2011	11685	Pro-Pipe & Supply, Inc.	11.37
02/25/2011	11686	Separation Processes, Inc.	6,392.31
02/25/2011	11687	Verizon	127.82
02/25/2011	11688	Inland Empire Resource Conserv	7,500.00
02/25/2011	11689	Center Electric	4,562.48
02/25/2011	11690	G&G Environmental Compliance, I	2,568.51
02/25/2011	11691	VOID CHECK	0.00
02/25/2011	11692	Inland Water Works Supply Co.	1,770.69
02/25/2011	11693	James John Brothers	14,584.00
02/25/2011	11694	Godwin Pumps	7,079.42
02/25/2011	11695	American Family Life Assurance	2,420.23
02/25/2011	11696	Cypress Insurance Company	18,062.00
<b>February 2011 Check Register Total</b>			<b>2,388,942.79</b>

### Financial Account Information - February 2011

DATE	DESCRIPTION	Deposit Checking	General Checking	Investment Checking	Treasuries at cost	LAIF Invest. Fund	TOTAL ACTIVITY
01/31/2011	bal forward	820,977.97	30,900.86	76,297.46	10,574,265.80	32,863.84	11,535,305.93
1/31	rev retained in MM				(517.43)		(517.43)
02/01/2011	Deposit	57,115.66					57,115.66
	Credit Card-1/31	156.78					156.78
	Credit Card-2/1	2,774.81					2,774.81
	Electronic	17,309.19					17,309.19
	Website-2/1	1,116.59					1,116.59
	Website-2/2	172.95					172.95
	Website-2/2	243.87					243.87
02/02/2011	Deposit	42,075.45					42,075.45
	Credit Card-2/1	543.27					543.27
	Credit Card-2/2	4,054.69					4,054.69
	Electronic	12,510.24					12,510.24
	Website	604.59					604.59
	ETS Fees	(947.92)					(947.92)
	ETS Fees	(925.90)					(925.90)
	Cks#11458-11499		(126,104.00)				(126,104.00)
	<b>TRF#968-AP</b>	<b>(125,203.14)</b>	<b>125,203.14</b>				<b>0.00</b>
02/03/2011	Deposit	38,971.79					38,971.79
	Deposit - Riv Cnty Tax	2,523.82					2,523.82
	Deposit - SB Cnty Tax	14,979.74					14,979.74
	Credit Card-2/2	909.51					909.51
	Credit Card-2/3	741.21					741.21
	Electronic	11,764.27					11,764.27
	Website-2/3	807.88					807.88
	Website-2/4	67.65					67.65
	ACH pmts	26,998.27					26,998.27
02/04/2011	Deposit	30,731.31					30,731.31
	Credit Card-2/3	59.35					59.35
	Credit Card-2/4	1,406.33					1,406.33
	Electronic	10,598.32					10,598.32
	Website-2/4	822.38					822.38
	Website-2/5	706.00					706.00
	Website-2/6	679.59					679.59
	Website-2/7	408.94					408.94
02/07/2011	Deposit	68,373.36					68,373.36
	Credit Card-2/4	128.99					128.99
	Credit Card-2/7	1,627.93					1,627.93
	Electronic	11,520.46					11,520.46
	Website-2/7	900.65					900.65
	Website-2/8	57.89					57.89
02/08/2011	Deposit	86,858.74					86,858.74
	Credit Card	2,642.39					2,642.39
	Electronic	17,040.32					17,040.32
	Website-2/8	1,437.55					1,437.55
	Website-2/9	133.64					133.64
02/09/2011	Deposit	37,503.36					37,503.36
	Deposit-M/C	2,520.77					2,520.77
	Credit Card-2/8	190.46					190.46
	Credit Card-2/9	3,620.03					3,620.03
	Electronic	9,054.18					9,054.18
	Website-2/9	1,425.62					1,425.62
	Website-2/10	60.00					60.00
	Website-2/10	252.35					252.35
	void ck#11417, 1/24		2,000.00				2,000.00
	void ck#11172, 12/17		1,355.10				1,355.10

### Financial Account Information - February 2011

DATE	DESCRIPTION	Deposit Checking	General Checking	Investment Checking	Treasuries at cost	LAIF Invest. Fund	TOTAL ACTIVITY
01/31/2011	bal forward	820,977.97	30,900.86	76,297.46	10,574,265.80	32,863.84	11,535,305.93
2/11/11-PR	Federal Taxes		(37,466.25)				(37,466.25)
2/11/11-PR	State Taxes		(6,814.98)				(6,814.98)
2/11/11-PR	PR Direct Deposit		(100,065.99)				(100,065.99)
2/11/11-PR	ING 457		(7,607.68)				(7,607.68)
	Cks#11500-11561		(117,579.69)				(117,579.69)
	<b>TRF#969-AP&amp;PR</b>	<b>(266,179.49)</b>	<b>266,179.49</b>				0.00
02/10/2011	Deposit	43,982.35					43,982.35
	Credit Card-2/9	199.41					199.41
	Credit Card-2/10	414.65					414.65
	Electronic	6,867.30					6,867.30
	Website-2/10	589.58					589.58
	Website-2/11	474.36					474.36
	ACH pmnts	31,760.16					31,760.16
02/11/2011	Deposit	46,116.39					46,116.39
	Credit Card-2/10	55.24					55.24
	Credit Card-2/11	1,501.37					1,501.37
	Electronic	11,791.18					11,791.18
	Website-2/11	627.93					627.93
	Website-2/12	487.95					487.95
	Website-2/13	622.98					622.98
	Website-2/14	63.75					63.75
02/14/2011	Deposit	45,992.29					45,992.29
	Deposit-M/C	18,901.00					18,901.00
	Deposit-M/C	10,995.00					10,995.00
	Credit Card-2/14	1,824.02					1,824.02
	Electronic	11,970.40					11,970.40
	Website-2/14	778.76					778.76
	Website-2/15	177.52					177.52
02/15/2011	Deposit	33,827.42					33,827.42
	Credit Card-2/14	152.47					152.47
	Credit Card-2/15	1,407.69					1,407.69
	Electronic	15,500.21					15,500.21
	Website-2/15	1,001.16					1,001.16
	Website-2/16	464.07					464.07
	ACH pmnts	30,457.15					30,457.15
02/16/2011	Deposit	28,153.67					28,153.67
	Deposit-M/C	43,156.80					43,156.80
	Deposit-M/C	5,441.28					5,441.28
	Credit Card-2/15	783.09					783.09
	Credit Card-2/16	5,618.05					5,618.05
	Electronic	7,137.04					7,137.04
	Website	956.17					956.17
	Cks#11562-11625		(966,946.34)				(966,946.34)
	<b>TRF#970-AP</b>	<b>(966,946.34)</b>	<b>966,946.34</b>				0.00
02/17/2011	Deposit	23,731.59					23,731.59
	Credit Card-2/16	342.18					342.18
	Credit Card-2/17	797.92					797.92
	Electronic	6,080.55					6,080.55
02/18/2011	Deposit	29,303.35					29,303.35
	Credit Card	566.03					566.03
	Electronic	12,145.34					12,145.34
	Website-2/18	1,119.83					1,119.83
	Website-2/19	6,763.12					6,763.12
	Website-2/20	519.78					519.78
	Website-2/21	839.29					839.29
	Website-2/22	201.90					201.90

## Financial Account Information - February 2011

DATE	DESCRIPTION	Deposit Checking	General Checking	Investment Checking	Treasuries at cost	LAIF Invest. Fund	TOTAL ACTIVITY
01/31/2011	bal forward	820,977.97	30,900.86	76,297.46	10,574,265.80	32,863.84	11,535,305.93
02/22/2011	Deposit	48,660.35					48,660.35
	Credit Card-2/18	230.56					230.56
	Credit Card-2/22	3,047.66					3,047.66
	Electronic	13,777.87					13,777.87
	Website-2/22	1,116.67					1,116.67
	Website-2/23	57.18					57.18
	Website-2/23	58.88					58.88
	ACH pmts	18,863.11					18,863.11
02/23/2011	Deposit	37,317.03					37,317.03
	Credit Card-2/22	325.57					325.57
	Credit Card-2/23	1,649.65					1,649.65
	Electronic	17,619.39					17,619.39
	Website	1,033.69					1,033.69
#971void	TRF#972 2004A pmt			803,000.00			803,000.00
	TRF#973	810,000.00		(810,000.00)			0.00
2/25/11-PR	Federal Taxes		(36,493.90)				(36,493.90)
2/25/11-PR	State Taxes		(6,758.13)				(6,758.13)
2/25/11-PR	PR Direct Deposit		(99,155.89)				(99,155.89)
2/25/11-PR	ING 457		(6,189.52)				(6,189.52)
	Ck #11626-11696		(1,178,312.76)				(1,178,312.76)
	TRF#974-AP & PR	(1,326,910.20)	1,326,910.20				0.00
02/24/2011	Deposit	16,769.07					16,769.07
	Credit Card-2/23	337.30					337.30
	Credit Card-2/24	599.51					599.51
	Electronic	5,922.75					5,922.75
	Website-2/24	590.98					590.98
	Website-2/25	301.73					301.73
02/25/2011	Deposit	22,735.76					22,735.76
	Credit Card-2/24	82.45					82.45
	Credit Card-2/25	1,466.68					1,466.68
	Electronic	4,967.92					4,967.92
	Website-2/25	883.67					883.67
	Website-2/26	1,300.27					1,300.27
	Website-2/27	629.75					629.75
	Website-2/28	220.06					220.06
	ACH pmts	43,392.62					43,392.62
02/28/2011	Deposit	46,535.55					46,535.55
	Deposit-SB Taxes	50,412.29					50,412.29
	Credit Card-2/25	176.68					176.68
	Credit Card-2/28	943.36					943.36
	Electronic	5,766.19					5,766.19
	Website-2/28	880.07					880.07
	Website-3/1	356.34					356.34
	February '11 NSF's	(614.04)					(614.04)
2/17	Cusip #9127952B6 maturity				(2,501,374.50)		(2,501,374.50)
2/22	Cusip #9127953A7 purchase				1,699,512.82		1,699,512.82
2/28	retained in MM				4.61		4.61
	<b>TOTALS</b>	<b>312,143.43</b>	<b>30,000.00</b>	<b>69,297.46</b>	<b>9,771,891.30</b>	<b>32,863.84</b>	<b>10,216,196.03</b>

## Investment Summary - February 2011

U.S. TREASURIES						
Quantity	Description	Cusip	Maturity Date	Yield	Cost of Purchase	Market Value
2,901,000	US Treasury Bill	9127952H3	March 24, 2011	0.070%	2,900,131.30	2,900,361.78
1,213,000	US Treasury Bill	9127952M2	April 21, 2011	0.090%	1,212,557.26	1,212,611.84
2,731,000	US Treasury Bill	9127952R1	May 19, 2011	0.070%	2,730,146.56	2,729,743.74
1,230,000	US Treasury Bill	9127952W0	June 23, 2010	0.090%	1,229,538.75	1,229,225.10
1,700,000	US Treasury Bill	9127953A7	July 21, 2011	0.070%	1,699,512.82	1,699,512.82
<b>9,775,000</b>		<b>Total Values</b>		<b>9,771,886.69</b>		<b>9,771,455.28</b>

<b>Money Market Account Activity-Beginning Balance</b>	<b>517.43</b>
2/28/11 - Dividend	0.00
2/17/11 - Cusip # 912795X89 Interest	625.50
<b>Income</b>	<b>625.50</b>
2/23/11 - Intra-Bank Transfers to/from Investment Checking	(803,000.00)
<b>Fund Transfers</b>	<b>(803,000.00)</b>
2/17/11 - Cusip # 9127952B6 Maturity	2,501,374.50
<b>Redemptions</b>	<b>2,501,374.50</b>
2/22/11 - Cusip # 9127953A7 Purchase	(1,699,512.82)
<b>Purchases</b>	<b>(1,699,512.82)</b>
<b>Ending Balance - Money Market</b>	<b>4.61</b>
<b>US Treasury Securities Investment Principal</b>	<b>9,771,886.69</b>
<b>Total Assets</b>	<b>9,771,891.30</b>

### Investment Summary - February 2011

#### LOCAL AGENCY INVESTMENT FUND

PERIOD	TOTAL WITHDRAWAL AMOUNT	TOTAL DEPOSIT AMOUNT	ACCRUED INTEREST (QUARTERLY)	ENDING BALANCE
July 31, 2010	\$0.00	\$0.00	\$45.39	\$32,783.80
August 31, 2010	\$0.00	\$0.00	\$0.00	\$32,783.80
September 30, 2010	\$0.00	\$0.00	\$0.00	\$32,783.80
October 31, 2010	\$0.00	\$0.00	\$42.34	\$32,826.14
November 30, 2010	\$0.00	\$0.00	\$0.00	\$32,826.14
December 31, 2010	\$0.00	\$0.00	\$0.00	\$32,826.14
January 31, 2011	\$0.00	\$0.00	\$37.70	\$32,863.84
February 28, 2011	\$0.00	\$0.00	\$0.00	\$32,863.84
March 31, 2011	\$0.00	\$0.00	\$0.00	\$32,863.84
April 30, 2011	\$0.00	\$0.00	\$0.00	\$32,863.84
May 31, 2011	\$0.00	\$0.00	\$0.00	\$32,863.84
June 30, 2011	\$0.00	\$0.00	\$0.00	\$32,863.84

**L.A.I.F. INCOME SUMMARY**

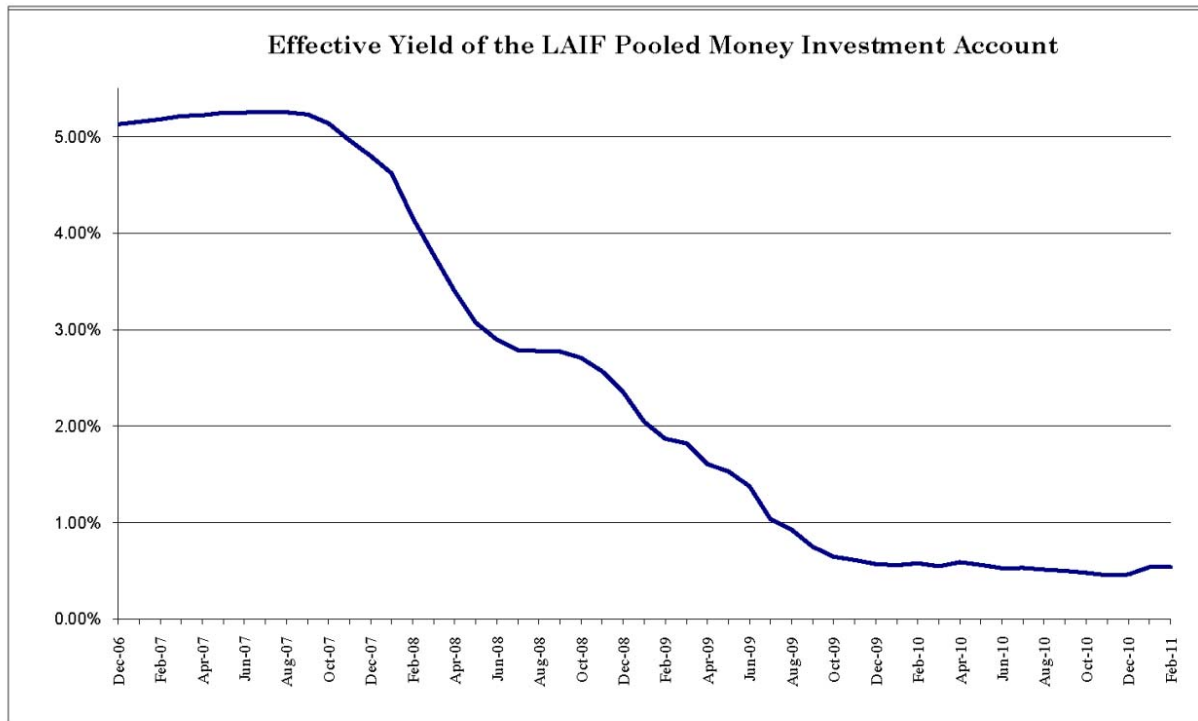
**CURRENT QUARTER**

**FY YEAR-TO-DATE**

INCOME RECEIVED

\$37.70

\$125.43



Monthly Revenue Allocation - February 2011

DATE	Description	Qty	DEPOSIT CHECKING DEPOSITS	AR Mail & Counter	AR Payment Centers	AR Credit Card	AR Electronic Rapid Pay	AR Web Site	AR ACH Auto Pay	AR TOTAL	AR Water Fees & Deposits	Water Allocation	Sewer Allocation	Recycled Allocation	RECAP TOTAL
02/01/2011	Mail & Counter	522	57,115.66	57,115.66						57,115.66					57,115.66
	Credit Cards	23	2,931.59			2,931.59				2,931.59					2,931.59
	Electronic	284	17,308.19				17,308.19			17,308.19					17,308.19
	Website	22	1,533.41					1,494.91		1,494.91	38.50				1,533.41
02/02/2011	Mail & Counter	471	42,075.45	42,075.45						42,075.45					42,075.45
	Credit Cards	35	4,597.96			4,597.96				4,597.96					4,597.96
	Electronic	211	12,510.24	12,510.24			12,510.24			12,510.24					12,510.24
	Website	7	604.59					562.34		562.34	12.25				604.59
02/03/2011	Mail & Counter	319	38,971.79	38,971.79						38,971.79					38,971.79
	Dep-Riv Cnty Tax	-	2,523.82							0.00		2,523.82			2,523.82
	Dep-SB Cnty Tax	-	14,979.74							0.00		14,979.74			14,979.74
	Credit Cards	15	1,650.72			1,650.72				1,650.72					1,650.72
	Electronic	172	11,764.27				11,764.27			11,764.27					11,764.27
	Website	8	875.53					861.53		861.53	14.00				875.53
	ACH payment	350	26,988.27						26,988.27	26,988.27					26,988.27
02/04/2011	Mail & Counter	375	30,731.31	30,731.31						30,731.31					30,731.31
	Credit Cards	16	1,465.68			1,465.68				1,465.68					1,465.68
	Electronic	178	10,598.32				10,598.32			10,598.32					10,598.32
	Website - 36 fees	37	2,616.91					2,563.81		2,563.81	85.00				2,616.91
02/07/2011	Mail & Counter	696	68,373.36	68,373.36						68,373.36					68,373.36
	Credit Cards	20	1,756.92			1,756.92				1,756.92					1,756.92
	Electronic	168	11,520.46				11,520.46			11,520.46					11,520.46
	Website	14	958.54					934.04		934.04	24.50				958.54
02/08/2011	Mail & Counter	457	86,858.74	86,858.74						86,858.74					86,858.74
	Credit Cards	22	2,642.39			2,642.39				2,642.39					2,642.39
	Electronic	264	17,040.32				17,040.32			17,040.32					17,040.32
	Website - 12 fees	14	1,571.19							1,571.19	21.00				1,571.19
02/09/2011	Mail & Counter	362	37,503.36	37,503.36						37,503.36					37,503.36
	Deposit-M/C	-	2,520.77							0.00		2,520.77			2,520.77
	Credit Cards	28	3,810.49			3,810.49				3,810.49					3,810.49
	Electronic	141	9,054.18				9,054.18			9,054.18					9,054.18
	Website	19	1,737.97					1,704.72		1,704.72	33.25				1,737.97
02/10/2011	Mail & Counter	270	43,982.35	43,982.35						43,982.35					43,982.35
	Credit Cards	5	614.06			614.06				614.06					614.06
	Electronic	115	6,867.30				6,867.30			6,867.30					6,867.30
	Website	13	1,063.94					1,041.19		1,041.19	22.75				1,063.94
	ACH payment	436	31,760.16						31,760.16	31,760.16					31,760.16
02/11/2011	Mail & Counter	298	46,116.39	46,116.39						46,116.39					46,116.39
	Credit Cards	18	1,556.61			1,556.61				1,556.61					1,556.61
	Electronic	175	11,791.18				11,791.18			11,791.18					11,791.18
	Website	21	1,802.61					1,765.86		1,765.86	36.75				1,802.61
02/14/2011	Mail & Counter	548	45,992.29	45,992.29						45,992.29					45,992.29
	Deposit-M/C	-	18,901.00							0.00		18,901.00			18,901.00
	Deposit-M/C	-	10,995.00							0.00		6,000.00	4,500.00	495.00	10,995.00
	Credit Cards	17	1,824.02			1,824.02				1,824.02					1,824.02
	Electronic	205	11,970.40				11,970.40			11,970.40					11,970.40
	Website	13	956.28					933.53		933.53	22.75				956.28

Monthly Revenue Allocation - February 2011

DATE	DESCRIPTION	QTY	DEPOSIT CHECKING DEPOSITS	AR Mail & Counter	AR Payment Centers	AR Credit Card	AR Electronic Rapid Pay	AR Web Site	AR ACH Auto Pay	AR TOTAL	AR Water Deposits	Water Allocation	Sewer Allocation	Recycled Allocation	RECAP TOTAL
02/19/2011	Mail & Counter	380	33,827.42	33,707.42						33,707.42	120.00				33,827.42
	Credit Cards	17	1,560.16			1,560.16				1,560.16					1,560.16
	Electronic	244	15,500.21				15,500.21			15,500.21					15,500.21
	Website	15	1,465.23					1,438.98		1,438.98	26.25				1,465.23
	ACH payment	442	30,457.15						30,457.15	30,457.15					30,457.15
02/16/2011	Mail & Counter	345	28,153.67	28,033.67						28,033.67	120.00				28,153.67
	Suspense TRF	-	7,865.22	7,865.22						7,865.22		(7,865.22)			0.00
	Deposit-M/C	-	43,156.80							0.00		43,156.80			43,156.80
	Deposit-M/C	-	5,441.28							0.00		5,441.28			5,441.28
	Credit Cards	49	6,401.14			6,401.14				6,401.14					6,401.14
	Electronic	112	7,137.04				7,137.04			7,137.04					7,137.04
	Website	10	956.17					938.67		938.67	17.50				956.17
02/17/2011	Mail & Counter	228	23,731.59	23,731.59						23,731.59					23,731.59
	Credit Cards	12	1,140.10			1,140.10				1,140.10					1,140.10
	Electronic	101	6,080.55				6,080.55			6,080.55					6,080.55
02/18/2011	Mail & Counter	239	29,303.35	29,303.35						29,303.35					29,303.35
	Credit Cards	9	566.03			566.03				566.03					566.03
	Electronic	182	12,145.34				12,145.34			12,145.34					12,145.34
	Website - 46 fees	47	9,443.92					9,363.42		9,363.42	80.50				9,443.92
02/22/2011	Mail & Counter	555	48,660.35	48,660.35						48,660.35					48,660.35
	Credit Cards	32	3,278.22			3,278.22				3,278.22					3,278.22
	Electronic	228	13,777.87				13,777.87			13,777.87					13,777.87
	Website - 17 fees	19	1,232.73							1,202.98	29.75				1,232.73
02/23/2011	ACH payment	419	18,863.11						18,863.11	18,863.11					18,863.11
	Mail & Counter	489	37,317.03	37,317.03						37,317.03					37,317.03
	Credit Cards	15	1,975.22			1,975.22				1,975.22					1,975.22
	Electronic	277	17,619.39				17,619.39			17,619.39					17,619.39
	Website	12	1,033.69					1,012.69		1,012.69	21.00				1,033.69
02/24/2011	Mail & Counter	203	16,769.07	16,769.07						16,769.07					16,769.07
	Credit Cards	6	936.81			936.81				936.81					936.81
	Electronic	90	5,922.75				5,922.75			5,922.75					5,922.75
	Website	10	892.71					875.21		875.21	17.50				892.71
02/25/2011	Mail & Counter	216	22,735.76	22,735.76						22,735.76					22,735.76
	Credit Cards	17	1,549.13			1,549.13				1,549.13					1,549.13
	Electronic	73	4,967.92				4,967.92			4,967.92					4,967.92
	Website	35	3,033.75					2,972.50		2,972.50	61.25				3,033.75
02/28/2011	ACH payment	487	43,392.62						43,392.62	43,392.62					43,392.62
	Mail & Counter	446	46,535.55	46,535.55						46,535.55					46,535.55
	Deposit-SB Taxes	-	50,412.29	1,076.19						1,076.19		49,336.10			50,412.29
	Credit Cards	12	1,120.04			1,120.04				1,120.04					1,120.04
	Electronic	87	5,766.19				5,766.19			5,766.19					5,766.19
Feb-11	Utility Pmt Cntr-421	19	1,236.41	(28,394.05)	28,394.05			1,204.91		1,204.91	31.50				1,236.41
	Feb '11 NSF's		(614.04)	(614.04)						(614.04)					(614.04)
<b>TOTALS</b>			<b>13,561</b>	<b>1,368,278.45</b>	<b>764,447.81</b>	<b>28,394.05</b>	<b>209,343.12</b>	<b>32,441.58</b>	<b>151,471.31</b>	<b>1,227,475.16</b>	<b>814.00</b>	<b>134,994.29</b>	<b>4,500.00</b>	<b>495.00</b>	<b>1,368,278.45</b>
<b>TOTAL # AR PAYMENTS</b>				<b>7,095</b>	<b>421</b>	<b>370</b>	<b>3,206</b>	<b>335</b>	<b>2,134</b>	<b>13,561</b>					
<b>PERCENT OF TOTAL RECEIVED</b>				<b>52.32%</b>	<b>3.10%</b>	<b>2.73%</b>	<b>23.64%</b>	<b>2.47%</b>	<b>15.74%</b>	<b>100.00%</b>					

FY 2011 - Water Revenue

ACCOUNT#	DESCRIPTION	BUDGET	July '10	Aug '10	Sept '10	Oct '10	Nov '10	Dec '10	Jan '11	Feb '11	Year to Date	Percentage YTD
02-40010	Sales - Water	5,975,000	182,137	740,517	916,226	612,943	363,663	356,252	212,982	247,768	3,632,489	60.79%
02-40011	Sales - Construction Water	20,000	761	4,332	8,788	6,391	3,352	2,886	778	1,842	29,611	148.06%
02-40013	Sales - Imported Water	800,000	32,304	122,070	148,871	102,761	63,708	62,689	38,339	45,017	615,160	76.97%
02-40014	Sales Disc.-Multi Units Usage Chrg.	(125,000)	(3,730)	(13,214)	(15,491)	(11,899)	(8,858)	(10,513)	(7,739)	(7,622)	(79,069)	63.25%
02-40015	Water Wholesale Revenue	170,000	3,909	3,935	3,511	3,371	3,237	23,890	3,620	0	45,473	26.75%
02-40016	Service Establishment Fee	100	0	0	0	0	0	0	0	0	0	0.00%
02-41000	Service Demand Charges	2,100,000	50,401	160,959	184,363	178,477	160,927	183,835	177,978	160,371	1,257,310	59.87%
02-41001	Fire Service Standby Fees	17,500	528	1,229	1,370	1,338	1,242	1,442	1,350	1,202	9,700	55.43%
02-41003	Construction Service Charge	15,000	105	545	501	398	536	598	391	334	3,407	22.72%
02-41005	Sales Disc-Multi Units Service Chrg.	(90,000)	(2,461)	(7,488)	(8,557)	(8,290)	(7,488)	(8,557)	(8,290)	(7,488)	(58,617)	65.13%
02-41010	Unauthorized Use of Water Charge	2,500	325	0	0	0	65	0	195	0	585	23.40%
02-41110	Meter/Lateral Installation	2,500	0	0	0	0	0	650	0	975	1,625	65.00%
02-41112	Fire Flow Test Fees	2,500	225	150	150	75	150	150	75	300	1,275	51.00%
02-41113	Disconnect/Reconnect Fees	150,000	8,380	6,965	11,310	9,945	8,215	8,070	9,085	8,475	70,445	46.96%
02-41121	Delinquent Payment Charges	135,000	12,838	15,683	13,061	19,446	14,751	8,787	9,009	6,498	100,073	74.13%
02-41124	Bad Debt	0	0	0	0	0	0	0	0	0	0	0
02-42123	Management & Accounting Fees	583,310	49,443	49,443	49,443	49,443	49,443	49,443	49,443	49,443	395,540	66.67%
02-43010	Interest Earned	50,000	85	255	102	66	495	217	143	626	1,989	3.95%
02-43110	Property Tax - Unsecured	100,000	0	0	0	6,054	89,543	(46,859)	121	(477)	48,384	48.38%
02-43120	Property Tax - Secured	2,300,000	0	0	0	0	(390)	705,291	159,333	41,233	905,467	39.37%
02-43130	Tax Collection - Prior	75,000	0	366	0	9,363	9,165	(6,676)	1,086	2,985	16,288	21.72%
02-43140	Other Taxes	75,000	0	213	0	0	27	13,248	16,606	22,581	52,675	70.23%
02-49150	Revenue - Misc. Non-Operating	35,000	2,338	13,650	2,689	5,607	5,055	7,082	4,172	2,092	42,684	121.96%
	<b>WATER OPERATING REVENUE</b>	<b>12,403,410</b>	<b>337,587</b>	<b>1,099,609</b>	<b>1,316,317</b>	<b>985,988</b>	<b>756,838</b>	<b>1,351,924</b>	<b>668,679</b>	<b>576,155</b>	<b>7,093,095</b>	<b>57.19%</b>
02-82002	Grants (FEMA)	0	0	0	0	3,172	0	5,061	0	18,901	27,134	
02-89901	Facility Capacity Charges	0	0	0	0	0	0	5,156	13,180	39,540	57,876	
02-89902	Sustainability	0	0	0	0	0	0	881	881	2,642	4,403	
	<b>TOTAL WATER REVENUE</b>	<b>12,403,410</b>	<b>337,587</b>	<b>1,099,609</b>	<b>1,316,317</b>	<b>989,160</b>	<b>756,838</b>	<b>1,363,022</b>	<b>682,739</b>	<b>637,238</b>	<b>7,182,508</b>	

### FY 2011 - Sewer Revenue

ACCOUNT#	DESCRIPTION	BUDGET	July '10	Aug '10	Sept '10	Oct '10	Nov '10	Dec '10	Jan '11	Feb '11	Year to Date	Percentage YTD
03-40016	Sales - Establish Service Fee	0	0	0	25	0	0	0	0	0	25	
03-41000	Sales - Sewer Charges	10,100,000	301,895	855,921	875,569	852,545	846,296	843,691	832,729	834,198	6,242,845	61.81%
03-41005	Sales Disc-Multi Units Service Chrg.	(215,000)	(6,155)	(16,570)	(16,623)	(16,606)	(16,551)	(16,591)	(16,522)	(16,528)	(122,146)	56.81%
03-41110	Meter/Lateral Installation	0	0	0	1,900	0	0	0	0	0	1,900	
03-41121	Penalty Late Charges	140,000	11,064	10,740	9,769	11,766	11,509	11,181	11,611	11,353	88,991	63.56%
03-41124	Bad Debt	0	0	0	0	0	0	0	0	0	0	
03-41131	Front Footage Fees	0	0	0	27,395	0	0	0	0	0	27,395	
03-42122	Revenue - other operating	1,000	0	0	360	0	180	180	0	0	720	72.00%
03-43010	Interest Earned	45,000	0	159	273	597	0	0	258	0	1,287	2.86%
03-43110	Property Tax - Unsecured	50,000	0	0	0	0	0	50,000	0	0	50,000	100.00%
03-43120	Property Tax - Secured	250,000	0	0	0	0	0	250,000	0	0	250,000	100.00%
03-43130	Tax Collection - Prior	20,000	0	0	0	0	0	10,000	0	0	10,000	50.00%
03-43140	Other Taxes	1,500	0	0	0	0	0	1,500	0	0	1,500	100.00%
03-49150	Misc. Non-Oper Revenue	2,000	0	0	0	0	0	0	23,515	0	23,515	1175.74%
	<b>SEWER OPERATING REVENUE</b>	<b>10,394,500</b>	<b>306,803</b>	<b>850,250</b>	<b>898,667</b>	<b>848,301</b>	<b>841,434</b>	<b>1,149,962</b>	<b>851,591</b>	<b>829,023</b>	<b>6,576,031</b>	<b>63.26%</b>
03-82003	Grants - ARRA	0	0	0	0	242,258	126,603	117,256	135,594	0	621,711	
03-82004	Grants - Prop 50	0	0	0	0	0	917,389	296,863	281,745	0	1,495,997	
03-89901	Facility Capacity Charges	0	0	0	17,755	0	0	7,891	0	0	25,646	
	<b>TOTAL SEWER REVENUE</b>	<b>10,394,500</b>	<b>306,803</b>	<b>850,250</b>	<b>916,422</b>	<b>1,090,559</b>	<b>1,885,426</b>	<b>1,571,972</b>	<b>1,268,930</b>	<b>829,023</b>	<b>8,719,385</b>	

### FY 2011 - Recycled Revenue

ACCOUNT#	Description	BUDGET	July '10	Aug '10	Sept '10	Oct '10	Nov '10	Dec '10	Jan '11	Feb '11	Year to Date	Percentage YTD
04-40010	Sales - Recycled Water	365,000	14,781	60,306	80,862	46,064	18,815	18,603	3,586	6,907	249,925	68.47%
04-40011	Sales - Construction Water	9,000	246	597	73	80	25	188	623	49	1,881	20.90%
04-41000	Sales - Service Demand Chrg.	26,000	834	2,277	2,505	2,424	2,131	2,433	2,296	2,076	16,976	65.29%
04-41003	Const. Water Minimum Chrg.	4,000	107	258	294	285	258	327	357	347	2,232	55.80%
04-41110	Meter/Lateral installation	0	0	0	0	0	0	0	0	0	0	0
04-41121	Penalty - Late Charge	775	24	11	7	7	21	6	40	83	199	25.69%
04-43010	Interest Earned	0	0	0	0	0	64	0	0	0	64	0
04-43110	Property Tax - Unsecured	500	0	0	0	0	0	500	0	0	500	100.00%
04-43120	Property Tax - Secured	6,000	0	0	0	0	0	6,000	0	0	6,000	100.00%
04-49150	Misc. Non-Operating Revenue	0	0	0	0	0	0	0	0	0	0	0
	<b>RECYCLED OPERATING REVENUE</b>	<b>411,275</b>	<b>15,992</b>	<b>63,448</b>	<b>83,742</b>	<b>48,861</b>	<b>21,314</b>	<b>28,055</b>	<b>6,902</b>	<b>9,462</b>	<b>277,777</b>	<b>67.54%</b>
04-89901	Facility Capacity Charges	0	0	0	0	0	0	5,467	0	0	5,467	0
	<b>TOTAL RECYCLED REVENUE</b>	<b>411,275</b>	<b>15,992</b>	<b>63,448</b>	<b>83,742</b>	<b>48,861</b>	<b>21,314</b>	<b>33,522</b>	<b>6,902</b>	<b>9,462</b>	<b>283,244</b>	

### FY 2011 - Water Expenses

ACCOUNT#	DESCRIPTION	BUDGET	July '10	Aug '10	Sept '10	Oct '10	Nov '10	Dec '10	Jan '11	Feb '11	Year to Date	Percentage YTD
02-5-01-50010	Labor-Water Resources	644,500	51,237	47,592	50,508	43,582	40,151	70,150	45,041	41,842	390,103	60.53%
02-5-01-50011	Labor-Credit	0	0	0	0	0	0	0	0	0	0	
02-5-01-50013	Benefits-Fica	52,000	4,136	3,880	4,085	3,576	3,292	5,424	3,731	3,478	31,602	60.77%
02-5-01-50014	Benefits-Life Insurance	3,420	264	270	270	276	214	235	256	256	2,040	59.66%
02-5-01-50016	Benefits-HealthDefrd Comp	90,720	8,439	8,655	8,671	8,674	7,062	8,520	8,892	8,337	67,240	74.12%
02-5-01-50017	Benefits-Disability Insurance	9,300	848	818	849	773	627	938	822	784	6,459	69.45%
02-5-01-50019	Benefits-Workers Compensation	34,000	2,650	147	0	0	8,275	3,481	3,481	981	19,015	55.93%
02-5-01-50021	Benefits-PERS	45,000	2,811	3,141	3,075	2,812	2,654	4,215	2,884	2,756	24,348	54.11%
02-5-01-50022	Benefits-PERS-Employer	78,500	5,134	5,709	5,589	5,112	4,821	7,663	5,243	5,009	44,280	56.41%
02-5-01-50023	Benefits-Uniforms	2,500	217	174	195	156	161	210	151	73	1,335	53.42%
02-5-01-50024	Benefits-Vacation & Sick Pay	3,600	339	554	339	611	690	888	475	413	4,307	119.65%
02-5-01-50025	Benefits-Boot Allowance	1,575	150	0	0	150	375	15,516	(15,516)	0	675	42.86%
02-5-01-51003	R&M - Structures	215,000	4,874	17,851	13,157	11,817	29,905	28,424	8,018	3,257	117,404	54.61%
02-5-01-51011	R&M - CLA Valves	15,000	0	0	104	639	0	0	0	0	743	4.96%
02-5-01-51140	General Supplies & Expenses	1,500	0	43	28	0	841	160	210	294	1,577	105.13%
02-5-01-51210	Utilities - Power Purchases	1,405,000	203,003	208,075	187,808	118,542	84,808	77,008	28,319	0	907,565	64.60%
02-5-01-51211	Utilities - Electricity & Fuel	4,000	394	418	441	344	321	338	44	0	2,300	57.51%
02-5-01-51316	Imported Water Purchases	800,000	45,959	186,164	104,310	116,824	90,494	42,113	34,703	0	620,567	77.57%
02-5-01-54019	Licenses & Permits	22,000	576	1,728	7,981	0	1,207	1,902	635	0	14,028	63.76%
02-5-01-54110	Laboratory Services	90,000	300	5,420	11,060	2,955	2,656	2,540	4,540	150	29,621	32.91%
02-5-01-57040	YVRWFF Operating Expense	700,000	58,630	37,248	41,844	34,885	59,181	30,464	57,143	4,063	323,458	46.21%
	<b>WATER RESOURCE TOTALS</b>	<b>4,217,615</b>	<b>390,059</b>	<b>527,887</b>	<b>440,312</b>	<b>351,730</b>	<b>337,737</b>	<b>300,191</b>	<b>189,062</b>	<b>71,691</b>	<b>2,608,670</b>	<b>61.85%</b>
02-5-03-50010	Labor-Public Works	827,730	55,860	62,450	64,803	61,919	65,018	98,516	63,137	62,895	534,597	64.59%
02-5-03-50011	Labor-Credit	0	0	(410)	(10,314)	(1,884)	0	0	(8,909)	0	(21,517)	
02-5-03-50013	Benefits-Fica	67,500	4,532	5,062	5,247	5,008	5,248	7,977	5,181	5,147	43,403	64.30%
02-5-03-50014	Benefits-Life Insurance	5,750	419	426	426	426	426	419	426	426	3,392	58.99%
02-5-03-50016	Benefits-HealthDefrd Comp	138,240	11,654	14,803	13,650	14,828	14,829	15,100	15,802	15,374	116,040	83.94%
02-5-03-50017	Benefits-Disability Insurance	15,100	981	1,069	1,095	1,061	1,095	1,408	1,153	1,148	9,009	59.66%
02-5-03-50019	Benefits-Workers Compensation	34,000	2,602	247	0	0	8,888	3,800	3,800	1,300	20,637	60.70%
02-5-03-50021	Benefits-PERS	58,600	3,657	4,024	4,086	4,086	4,156	6,128	4,086	4,155	34,376	58.66%
02-5-03-50022	Benefits-PERS Employer	102,300	6,879	7,315	7,427	7,427	7,549	11,141	7,427	7,548	62,513	61.11%
02-5-03-50023	Benefits-Uniforms	4,900	418	335	1,188	333	338	447	359	179	3,598	73.42%
02-5-03-50024	Benefits-Vacation & Sick Pay	3,000	193	193	193	0	0	387	387	193	1,546	51.55%
02-5-03-50025	Benefits-Boot Allowance	2,400	0	431	0	442	150	150	430	0	1,602	66.76%
02-5-03-51001	R & M - Vehicles & Equipment	195,000	9,533	15,194	9,572	15,789	16,976	22,362	7,468	5,292	102,178	52.40%
02-5-03-51011	R&M - Valves	10,000	0	0	636	3,154	0	0	0	285	4,075	40.75%
02-5-03-51020	R&M - Pipelines	260,000	19,118	55,449	10,727	14,406	12,349	13,629	7,477	11,050	144,205	55.46%
02-5-03-51021	R&M - Service Lines	135,000	2,809	6,085	7,329	4,638	7,019	6,239	952	3,830	38,901	28.82%
02-5-03-51022	R&M - Fire Hydrants	25,000	130	132	0	1,044	1,623	1,511	1,033	0	5,472	21.89%
02-5-03-51030	R&M - Water Meters	130,000	5,048	10,797	2,022	2,263	1,772	2,559	1,455	1,199	27,115	20.86%
02-5-03-51092	Equipment Credits	0	0	(50)	(4,972)	(1,114)	(5)	0	(3,609)	0	(9,749)	
02-5-03-51140	General Supplies & Expenses	2,480	0	8	121	26	0	125	0	0	280	11.28%
	<b>PUBLIC WORKS TOTALS</b>	<b>2,017,000</b>	<b>123,633</b>	<b>183,559</b>	<b>113,236</b>	<b>133,852</b>	<b>147,431</b>	<b>191,897</b>	<b>108,053</b>	<b>120,012</b>	<b>1,121,672</b>	<b>55.61%</b>

### FY 2011 - Water Expenses

ACCOUNT#	DESCRIPTION	BUDGET	July '10	Aug '10	Sept '10	Oct '10	Nov '10	Dec '10	Jan '11	Feb '11	Year to Date	Percentage YTD
02-5-06-50010	Labor-Administration	702,850	47,596	52,392	52,309	63,734	49,345	72,639	47,651	47,933	433,600	61.69%
02-5-06-50011	Labor Credit	0	0	0	0	4	(1,320)	0	0	0	(1,316)	
02-5-06-50012	Director Fees	14,000	0	1,641	1,094	1,216	1,155	1,459	1,155	1,945	9,664	69.03%
02-5-06-50013	Benefits-Fica	56,200	3,703	4,067	4,030	4,899	3,767	4,944	4,155	4,231	33,796	60.13%
02-5-06-50014	Benefits-Life Insurance	4,250	308	319	319	319	291	284	291	291	2,424	57.03%
02-5-06-50016	Benefits-Health\Defrd Comp	152,100	9,899	12,371	12,302	12,151	11,892	12,505	11,987	11,987	95,093	62.52%
02-5-06-50017	Benefits-Disability Insurance	9,500	735	786	787	838	653	766	841	846	6,254	65.83%
02-5-06-50019	Benefits-Workers Compensation	25,700	1,300	147	0	0	5,594	1,800	1,800	800	11,441	44.52%
02-5-06-50021	Benefits-PERS	49,200	3,229	3,626	3,626	3,518	3,440	5,015	3,305	3,325	29,085	59.12%
02-5-06-50022	Benefits PERS Employer	85,800	5,894	6,592	6,592	6,395	6,117	6,050	6,050	6,050	52,909	61.67%
02-5-06-50023	Uniforms	1,500	137	110	155	108	109	142	110	57	927	61.82%
02-5-06-50024	Benefits-Vacation & Sick Pay	11,500	1,208	715	864	635	608	1,048	641	731	6,449	56.08%
02-5-06-50025	Benefits-Boots	1,500	131	0	150	0	147	75	0	0	503	33.53%
02-5-06-51003	R&M - Structures	15,000	1,544	2,344	964	442	515	2,817	1,243	340	10,210	68.07%
02-5-06-51091	Expense Credits (overhead)	0	0	(45)	(305)	(385)	(57)	0	(1,795)	0	(2,588)	
02-5-06-51120	Safety Equipment/Supplies	10,000	102	847	2,751	1,102	1,441	383	1,291	214	8,131	81.31%
02-5-06-51125	Petroleum Products	100,000	10,727	9,297	8,264	7,491	8,917	4,785	11,740	3,860	65,081	65.08%
02-5-06-51130	Office Supplies & Expenses	40,000	2,145	3,631	4,638	1,018	1,215	1,755	9,061	305	23,768	59.42%
02-5-06-51140	General Supplies & Expenses	30,000	1,573	305	4,344	3,417	943	988	4,345	49	15,964	53.21%
02-5-06-51199	Disaster Incidences	25,000	500	3,946	3,439	1,867	1,768	1,666	226	0	16,344	65.38%
02-5-06-51211	Utilities - Electricity	5,000	38	35	40	104	272	485	439	0	1,413	28.26%
02-5-06-54002	Dues & Subscriptions	20,000	82	0	20	0	520	72	4,499	3,939	9,132	45.66%
02-5-06-54005	Computer Expenses	150,000	10,966	6,328	911	2,436	10,096	649	1,881	2,097	35,364	23.58%
02-5-06-54010	Postage	7,500	79	62	29	50	78	17	2,022	109	2,445	32.60%
02-5-06-54011	Printing & Publications	20,000	1,729	4,212	0	81	0	109	0	0	6,130	30.65%
02-5-06-54012	Education & Training	30,000	4,237	4,315	3,324	2,196	2,975	1,674	348	111	19,179	63.93%
02-5-06-54013	Utility Billing Expenses	125,000	10,342	11,172	10,989	10,870	11,079	11,091	16,235	1,874	83,632	66.91%
02-5-06-54014	Public Relations	10,000	1,252	806	855	422	33	863	0	269	4,501	45.01%
02-5-06-54015	Rents & Leases	3,500	392	197	392	197	197	197	392	197	2,160	61.72%
02-5-06-54016	Travel Related Expenses	15,000	2,007	1,117	791	110	1,149	481	29	35	5,718	38.12%
02-5-06-54017	Certifications & Renewals	6,000	355	221	330	314	55	535	(35)	230	2,005	33.42%
02-5-06-54020	Meeting Expenses	4,000	0	86	1,049	209	368	563	0	0	2,296	57.39%
02-5-06-54021	Disaster Preparedness Training	3,000	157	157	157	157	157	157	157	0	1,097	36.58%
02-5-06-54024	Utilities - Waste Disposal	38,000	2,844	3,257	2,537	2,798	4,048	2,403	2,437	84	20,407	53.70%
02-5-06-54104	Contractual Services	80,000	18,989	2,395	4,904	2,879	1,866	4,571	11,431	(841)	46,195	57.74%
02-5-06-54107	Legal	60,000	1,845	2,334	2,521	1,823	4,928	3,551	0	1,365	18,366	30.61%
02-5-06-54108	Audit & Accounting	16,000	0	6,500	2,850	1,216	253	0	0	0	10,818	67.61%
02-5-06-54109	Professional Fees	160,000	7,078	8,452	14,119	13,994	8,003	11,628	8,209	3,390	74,872	46.80%
02-5-06-55500	Depreciation Reserves	699,976	58,331	58,331	58,331	58,331	58,331	58,331	58,331	58,331	466,650	66.67%
02-5-06-56001	Insurance	115,000	9,202	9,202	9,202	9,202	9,202	9,202	9,202	9,202	73,616	64.01%
02-5-06-57030	Regulatory Compliance	62,500	0	0	0	0	0	0	0	0	0	0.00%
02-5-06-57050	Uncollectible Accounts	0	0	0	0	0	0	0	0	0	0	0
02-5-06-57090	Election Related Expense	15,000	0	0	0	0	0	0	0	460	460	3.07%
02-5-06-57096	Beaumont Basin Watermaster	5,500	0	0	6,000	0	0	0	0	0	6,000	109.09%
02-5-06-57100	County Tax Collector Fees	7,500	0	13	0	39	233	2,665	441	41	3,453	46.04%
02-5-06-57199	Suspense	0	406	(87)	0	0	0	(318)	(11,965)	7,865	(4,100)	
	<b>ADMINISTRATION TOTALS</b>	<b>2,992,576</b>	<b>224,595</b>	<b>222,098</b>	<b>235,058</b>	<b>216,342</b>	<b>211,777</b>	<b>235,859</b>	<b>210,366</b>	<b>174,253</b>	<b>1,730,349</b>	<b>57.82%</b>

### FY 2011 - Water Expenses

ACCOUNT#	DESCRIPTION	BUDGET	July '10	Aug '10	Sept '10	Oct '10	Nov '10	Dec '10	Jan '11	Feb '11	Year to Date	Percentage YTD
02-5-40-57201	Debt Srv-Series 2004A Princ.(250009)	885,000	0	885,000	0	0	0	0	0	0	885,000	100.00%
02-5-40-57402	Interest-Long-Term Debt Bonds	2,046,219	0	1,031,406	0	0	0	0	0	0	1,031,406	50.41%
02-5-40-57806	Rate Stabilization Fund	75,000	0	0	0	0	0	0	0	0	0	0.00%
02-5-40-57001	Asset Acq. - Water Resources	30,000	0	0	0	0	0	0	0	0	0	0.00%
02-5-40-57003	Asset Acq. - Utility Service	140,000	0	0	0	0	0	0	0	0	0	0.00%
02-5-40-57006	Asset Acq. - Administration	0	0	0	0	0	0	0	0	0	0	0.00%
	<b>40 - Debt &amp; Capital Outlay</b>	<b>3,176,219</b>	<b>0</b>	<b>1,916,406</b>	<b>0</b>	<b>0</b>	<b>0</b>	<b>0</b>	<b>0</b>	<b>0</b>	<b>1,916,406</b>	<b>60.34%</b>
	<b>TOTAL WATER EXPENSES</b>	<b>12,403,410</b>	<b>738,287</b>	<b>2,849,950</b>	<b>788,606</b>	<b>701,924</b>	<b>696,945</b>	<b>727,947</b>	<b>507,481</b>	<b>365,956</b>	<b>7,377,097</b>	<b>59.48%</b>

### FY 2011 - Sewer Expenses

ACCOUNT#	DESCRIPTION	BUDGET	July '10	Aug '10	Sept '10	Oct '10	Nov '10	Dec '10	Qtr 2 Totals	Jan '11	Feb '11	Year to Date	Percentage YTD
03-5-02-50010	Labor-WW Treatment	747,000	48,425	60,738	62,557	61,984	59,684	96,507	218,174	61,862	61,787	513,563	68.75%
03-5-02-50013	Benefits-Fica	62,900	4,001	5,070	5,227	5,174	4,971	7,692	17,837	5,228	5,206	42,569	67.68%
03-5-02-50014	Benefits-Life Insurance	4,150	321	327	327	331	329	319	980	341	341	2,635	63.49%
03-5-02-50016	Benefits-Health/Defrd Comp	135,800	9,216	11,261	11,461	11,343	11,312	13,086	35,742	12,441	12,005	92,125	67.84%
03-5-02-50017	Benefits-Disability Insurance	12,800	887	1,043	1,066	1,057	980	1,311	3,549	1,141	1,137	8,622	67.36%
03-5-02-50019	Benefits-Workers Compensation	31,475	2,500	147	0	0	8,275	3,481	11,756	3,481	981	18,865	59.94%
03-5-02-50021	Benefits-PERS	52,300	3,627	4,063	4,067	4,046	3,913	6,066	14,025	4,118	4,175	34,065	65.13%
03-5-02-50022	Benefits-PERS Employer	91,300	6,625	7,367	7,393	7,355	7,109	11,027	25,492	7,486	7,586	61,949	67.85%
03-5-02-50023	Benefits-Uniforms	3,300	346	263	361	272	257	347	876	273	156	2,276	68.96%
03-5-02-50024	Benefits-Vacation & Sick Pay	6,400	384	384	384	395	390	718	1,503	390	198	3,242	50.66%
03-5-02-50025	Benefits-Boot Allowance	1,725	0	0	0	0	375	0	375	75	0	450	26.09%
03-5-02-51003	R&M - Structures	200,000	31,822	9,089	14,586	14,508	1,180	31,295	46,983	(146)	3,133	105,467	52.73%
03-5-02-51010	R&M - Automation Control	50,000	0	2,968	6,939	14,544	1,000	5,329	20,873	4,953	3,797	39,531	79.06%
03-5-02-51106	Chemicals	500,000	33,339	50,466	45,599	45,230	46,637	50,668	142,535	64,091	15,657	351,887	70.38%
03-5-02-51111	Propane	10,000	0	0	0	0	0	1,769	1,769	0	0	1,769	17.69%
03-5-02-51115	Laboratory Supplies	32,000	3,916	1,216	1,831	3,179	1,518	2,478	7,175	127	1,147	15,412	48.16%
03-5-02-51140	General Supplies & Expenses	1,000	141	0	0	0	581	0	581	0	0	723	72.26%
03-5-02-51210	Utilities - Power Purchases	675,000	80,769	81,188	68,717	55,405	49,606	48,531	153,542	28,651	30,000	442,867	65.61%
03-5-02-54110	Laboratory Services	115,000	5,613	13,007	8,462	5,802	10,427	7,721	23,950	11,506	4,897	67,436	58.64%
03-5-02-57031	Sludge Disposal	280,000	26,008	23,848	24,679	22,627	24,553	25,688	72,868	23,404	0	170,806	61.00%
03-5-02-57033	Brine Disposal	26,000	0	0	2,710	2,710	2,710	0	0	0	0	8,130	31.27%
<b>TREATMENT TOTALS</b>		<b>3,038,150</b>	<b>257,940</b>	<b>272,436</b>	<b>266,365</b>	<b>255,964</b>	<b>235,808</b>	<b>314,033</b>	<b>805,805</b>	<b>229,441</b>	<b>152,402</b>	<b>1,984,389</b>	<b>65.32%</b>

### FY 2011 Sewer Expenses

ACCOUNT#	DESCRIPTION	BUDGET	July '10	Aug '10	Sept '10	Oct '10	Nov '10	Dec '10	Qtr 2 Totals	Jan '11	Feb '11	Year to Date	Percentage YTD
03-5-06-50010	Labor-Administration	655,050	42,149	48,761	48,677	60,102	45,714	67,192	173,008	44,020	44,302	400,917	61.20%
03-5-06-50012	Directors Fees	15,000	0	1,641	1,094	1,216	1,155	1,459	3,829	1,155	1,945	9,664	64.43%
03-5-06-50013	Benefits-Fica	59,500	3,254	3,776	3,739	4,615	3,476	4,496	12,587	3,862	3,938	31,155	52.36%
03-5-06-50014	Benefits-Life Insurance	4,200	311	320	320	320	292	285	896	291	291	2,430	57.86%
03-5-06-50016	Benefits-Health/Defrd Comp	155,400	9,578	12,241	12,207	12,020	11,761	13,679	37,460	11,838	11,838	95,163	61.24%
03-5-06-50017	Benefits-Disability Insurance	10,600	673	744	745	844	612	700	2,156	795	800	5,913	55.79%
03-5-06-50019	Benefits-Workers Compensation	22,000	2,000	147	0	0	6,794	3,000	9,794	3,000	1,800	16,741	76.09%
03-5-06-50021	Benefits-PERS	48,300	3,001	3,372	3,370	3,264	3,186	4,634	11,084	3,051	3,070	26,948	55.79%
03-5-06-50022	Benefits PERS Employer	83,900	5,478	6,130	6,126	5,933	5,798	8,424	20,155	5,546	5,588	49,024	58.43%
03-5-06-50023	Benefits-Uniforms	1,000	86	69	69	74	77	101	253	81	40	597	59.75%
03-5-06-50024	Benefits-Vacation & Sick Pay	11,500	1,208	715	864	635	608	1,048	2,291	641	731	6,449	56.08%
03-5-06-50025	Benefits-Boot Allowance	1,400	0	0	0	0	0	0	0	0	0	0	0.00%
03-5-06-51120	Safety Equipment/Supplies	7,500	0	0	542	38	665	459	1,162	319	0	2,024	26.99%
03-5-06-51125	Petroleum Products	15,000	5,102	1,000	1,000	1,000	1,000	1,000	3,000	1,000	1,000	12,102	80.68%
03-5-06-51130	Office Supplies	6,000	0	0	370	58	69	353	480	0	0	850	14.17%
03-5-06-51140	General Supplies & Expenses	7,500	57	93	335	3,177	747	82	4,006	3,245	0	7,737	103.15%
03-5-06-51199	Disaster Incidences	0	0	0	0	0	0	1,028	1,028	10,333	10,619	21,981	
03-5-06-54002	Dues & Subscriptions	10,000	0	0	618	441	547	72	1,060	5,183	792	7,653	76.53%
03-5-06-54003	Management & Admin Services	593,310	49,443	49,443	49,443	49,443	49,443	49,443	148,328	49,443	49,443	395,540	66.67%
03-5-06-54005	Computer Expenses	45,000	10,821	4,928	911	1,854	7,718	649	10,222	3,957	831	31,670	70.38%
03-5-06-54011	Printing & Publications	4,000	1,729	4,650	0	81	0	0	81	170	0	6,630	165.75%
03-5-06-54012	Education & Training	20,000	1,050	2,809	281	1,230	260	1,674	3,164	262	1,980	9,546	47.73%
03-5-06-54014	Public Relations	10,000	1,252	806	342	184	33	743	961	0	269	3,630	36.30%
03-5-06-54016	Travel Related Expenses	10,000	36	415	292	1,504	475	463	2,441	23	35	3,242	32.42%
03-5-06-54017	Certifications & Renewals	5,500	506	0	150	50	530	19	599	779	0	2,034	36.97%
03-5-06-54019	Licenses & Permits	40,000	1,789	0	4,134	3,513	28,222	4,534	36,269	0	0	42,191	105.48%
03-5-06-54020	Meeting Related Expenses	1,000	0	26	833	114	288	561	942	0	0	1,801	180.14%
03-5-06-54021	Disaster Preparedness Training	0	0	0	172	0	250	0	250	0	0	422	
03-5-06-54024	Utilities - Waste Disposal	10,000	934	934	934	3,156	934	934	5,024	934	0	8,760	87.60%
03-5-06-54025	Utilities - Telephone	17,000	1,088	1,245	1,090	1,088	2,669	1,531	5,288	1,469	947	11,125	65.44%
03-5-06-54030	Drinking Water	1,000	56	126	119	70	49	35	154	63	0	518	51.80%
03-5-06-54104	Contractual Services	25,000	11,637	1,124	1,502	1,321	2,418	1,210	4,950	5,182	533	24,927	99.71%
03-5-06-54107	Legal	45,000	1,585	3,082	4,114	2,603	4,115	3,356	10,074	1,235	0	20,089	44.64%
03-5-06-54108	Audit & Accounting	14,000	0	6,500	2,850	1,216	253	0	1,468	0	0	10,818	77.27%
03-5-06-54109	Professional Fees	300,000	28,298	34,896	31,823	30,424	20,285	27,214	77,923	17,494	3,638	194,071	64.69%
03-5-06-55500	Depreciation Reserves	1,191,120	99,260	99,260	99,260	99,260	99,260	99,260	297,780	99,260	99,260	794,080	66.67%
03-5-06-56001	Insurance	115,000	9,202	9,202	9,202	9,202	9,202	9,202	27,606	9,202	0	73,616	64.01%
03-5-06-57030	Regulatory Compliance	65,000	27,577	22	33,995	0	0	0	0	0	0	61,593	94.76%
03-5-06-57050	Uncollectible Accounts	0	0	0	0	0	0	0	0	0	0	0	
03-5-06-57100	County Tax Collection Fees	250	49	0	0	0	0	0	0	0	0	49	19.60%
<b>ADMINISTRATION TOTALS</b>		<b>3,626,030</b>	<b>319,208</b>	<b>298,476</b>	<b>321,522</b>	<b>300,048</b>	<b>308,884</b>	<b>308,838</b>	<b>917,770</b>	<b>283,834</b>	<b>252,892</b>	<b>2,393,701</b>	<b>66.01%</b>

### FY 2011 - Sewer Expenses

ACCOUNT#	DESCRIPTION	BUDGET	July '10	Aug '10	Sept '10	Oct '10	Nov '10	Dec '10	Qtr 2 Totals	Jan '11	Feb '11	Year to Date	Percentage YTD
03-5-07-50010	Labor-Environmental Control	217,740	15,615	17,073	17,352	17,101	17,562	23,267	57,930	15,131	14,792	137,882	63.33%
03-5-07-50011	Labor Credit	0	0	0	0	0	0	0	0	0	0	0	
03-5-07-50013	Benefits-Fica	20,100	1,262	1,366	1,378	1,339	1,375	1,839	4,554	1,178	1,152	10,880	54.13%
03-5-07-50014	Benefits-Life Insurance	1,625	111	114	114	114	114	83	310	85	85	819	50.41%
03-5-07-50016	Benefits-Health/Defrd Comp	50,100	3,679	3,930	3,930	3,687	4,173	3,807	11,668	3,318	3,318	29,844	59.57%
03-5-07-50017	Benefits-Disability Insurance	4,025	267	285	288	283	288	341	912	257	253	2,261	56.18%
03-5-07-50019	Benefits-Workers Compensation	7,350	750	147	0	0	5,794	2,000	7,794	2,000	1,200	11,891	161.78%
03-5-07-50021	Benefits-PERS	15,200	962	1,074	1,074	1,074	1,095	1,407	3,576	870	884	8,440	55.53%
03-5-07-50022	Benefits-PERS Employer	26,500	1,756	1,953	1,963	1,953	1,988	2,558	6,499	1,581	1,606	15,349	57.92%
03-5-07-50023	Benefits-Uniforms	1,200	115	92	115	86	85	111	281	88	22	714	59.53%
03-5-07-50024	Benefits-Vacation & Sick Pay	0	0	0	0	0	0	0	0	0	0	0	
03-5-07-50025	Benefits-Boot Allowance	600	0	0	0	0	150	0	150	0	0	150	25.00%
03-5-07-51003	R&M - Structures	300,000	31,144	22,195	24	17,586	8,281	4,507	30,374	20,540	29,507	133,783	44.59%
03-5-07-51140	General Supplies & Expenses	1,000	0	94	155	0	0	0	0	0	0	250	24.98%
03-5-07-51241	Lift Station #1	70,000	20,128	5,818	6,632	4,092	3,275	14,091	21,458	1,914	0	55,951	79.93%
03-5-07-51242	Lift Station #2	11,000	1,550	703	696	631	710	785	2,125	807	907	6,787	61.70%
03-5-07-51243	Lift Station #3	5,000	591	231	251	916	173	178	1,268	624	545	3,509	70.18%
03-5-07-51244	Lift Station #4	12,500	9,920	1,058	1,403	369	996	1,047	2,412	1,487	659	16,938	135.51%
03-5-07-51245	Lift Station #5	3,000	110	121	128	0	107	128	235	184	1,793	2,570	85.67%
03-5-07-51248	Lift Station #8	2,500	101	98	111	94	96	99	289	170	658	1,427	57.07%
03-5-07-54109	Professional Fees	35,000	3,809	5,435	0	4,200	5,981	0	10,181	6,601	0	26,024	74.35%
03-5-07-54110	Laboratory Services	2,500	0	0	0	0	0	0	0	771	0	771	30.84%
<b>ENVIRONMENTAL CONTROL TOTAL</b>		<b>786,940</b>	<b>91,868</b>	<b>61,776</b>	<b>35,604</b>	<b>53,525</b>	<b>52,242</b>	<b>56,247</b>	<b>162,014</b>	<b>57,607</b>	<b>57,383</b>	<b>466,253</b>	<b>59.25%</b>
03-5-40-57202	Debt Service - Principal	1,863,070	0	0	1,863,069	0	0	0	0	0	0	1,863,069	100.00%
03-5-40-57403	Debt Service - Interest	1,060,600	0	0	1,060,600	0	0	0	0	0	0	1,060,600	100.00%
03-5-40-57002	Asset Acq. - Treatment		0	0	0	5,817	0	221	6,038	0	0	6,038	
03-5-40-57006	Asset Acq. - Administration		0	0	0	0	0	0	0	0	0	0	
03-5-40-57007	Asset Acq. - Environmental Control		0	0	0	0	0	0	0	0	0	0	
03-5-40-57009	Plant Support (03-13105 Sari Line)	19,710	0	0	0	0	0	0	0	0	0	0	0.00%
<b>Debt &amp; Capital Outlay</b>		<b>2,943,380</b>	<b>0</b>	<b>0</b>	<b>2,923,669</b>	<b>5,817</b>	<b>0</b>	<b>221</b>	<b>6,038</b>	<b>0</b>	<b>0</b>	<b>2,929,707</b>	<b>99.54%</b>
<b>TOTAL SEWER EXPENSES</b>		<b>10,394,500</b>	<b>669,016</b>	<b>632,688</b>	<b>3,547,160</b>	<b>615,354</b>	<b>596,933</b>	<b>679,340</b>	<b>1,891,627</b>	<b>570,882</b>	<b>462,676</b>	<b>7,774,050</b>	<b>74.79%</b>

### FY 2011 - Recycled Expenses

ACCOUNT#	Description	BUDGET	July '10	Aug '10	Sept '10	Oct '10	Nov '10	Dec '10	Jan '11	Feb '11	Year to Date	Percentage YTD
04-5-06-50010	Labor-Recycled Water	81,500	5,462	6,208	6,208	6,208	6,208	10,863	6,208	6,208	53,571	65.73%
04-5-06-50012	Director Fees	0	0	0	0	0	0	0	0	0	0	
04-5-06-50013	Benefits-FICA	5,975	497	551	551	551	551	949	554	554	4,758	79.63%
04-5-06-50014	Benefits-Life Insurance	335	28	28	28	28	28	28	28	28	226	67.43%
04-5-06-50016	Benefits-Health & Def Comp	17,145	1,481	1,570	1,570	1,570	1,570	1,996	1,606	1,606	12,971	75.65%
04-5-06-50017	Benefits-Disability Insurance	1,030	100	108	108	108	108	144	116	116	908	88.15%
04-5-06-50019	Benefits-Workers Compensation	2,240	200	47	0	0	1,000	500	500	5	2,252	100.54%
04-5-06-50021	Benefits-PERS Employee	5,265	389	435	435	435	435	652	435	435	3,648	69.29%
04-5-06-50022	Benefits-PERS Employer	9,180	710	790	790	790	790	1,185	790	790	6,635	72.27%
04-5-06-50023	Benefits-Uniforms	280	0	0	0	0	0	0	0	0	0	0.00%
04-5-06-50024	Benefits-Vacation & Sick Pay	1,400	233	155	155	155	155	233	155	155	1,397	99.77%
04-5-06-50025	Benefits-Boots	150	0	0	0	0	0	0	0	0	0	0.00%
04-5-06-51003	R & M-Structures	8,500	0	0	400	0	1,048	38,978	(15,591)	0	24,835	292.17%
04-5-06-51020	R & M-Pipelines	0	0	0	46	0	0	0	0	0	46	
04-5-06-51021	R & M-Service Lines	0	0	0	0	0	0	0	0	0	0	
04-5-06-51022	R & M-Fire Hydrants	1,000	0	2,943	(2,957)	0	0	0	0	0	(14)	-1.35%
04-5-06-51030	R & M-Meters	250	0	0	0	0	0	0	0	0	0	0.00%
04-5-06-51140	General Supplies & Expenses	150	57	0	0	0	0	0	0	0	57	38.04%
04-5-06-51316	Imported Water Purchases	140,000	24,929	24,341	22,971	11,505	8,992	5,076	6,509	5,500	109,822	78.44%
04-5-06-54002	Dues & Subscriptions	1,500	0	0	0	0	0	0	733	0	733	48.84%
04-5-06-54005	Computer Expense	2,000	0	1,167	0	0	0	0	0	0	1,167	58.33%
04-5-06-54011	Printing & Publications	75	0	0	0	0	0	0	0	0	0	0.00%
04-5-06-54012	Education & Training	2,500	0	65	43	0	0	0	0	0	108	4.33%
04-5-06-54014	Public Relations	2,000	1,252	806	0	184	0	482	0	269	2,993	149.65%
04-5-06-54016	Travel Related Expenses	1,500	0	0	0	0	0	0	0	0	0	0.00%
04-5-06-54019	Licenses & Permits	0	0	0	0	0	0	0	1,984	0	1,984	
04-5-06-54020	Meeting Expenses	0	0	0	325	0	0	16	0	0	341	
04-5-06-54025	Telephone	600	55	55	55	55	58	55	52	0	385	64.23%
04-5-06-54010	Contractual Services	2,400	0	0	0	25	0	0	1,605	0	1,630	67.91%
04-5-06-54107	Legal	0	7,443	7,934	8,138	5,938	4,908	11,881	27,046	0	73,286	
04-5-06-54109	Professional Fees	10,000	0	0	0	0	0	0	0	0	0	0.00%
04-5-06-54110	Laboratory Services	0	0	0	0	0	0	0	30	0	30	
04-5-06-55500	Depreciation	114,300	9,525	9,525	9,525	9,525	9,525	9,525	9,525	9,525	76,200	66.67%
04-5-06-57010	County Tax Collection Fees	0	0	0	0	0	0	0	0	0	0	
04-5-06-57030	Regulatory Compliance	0	0	0	0	0	0	0	0	0	0	
04-5-06-57040	Environmental Compliance	0	0	0	0	0	0	0	0	0	0	
	<b>TOTAL RECYCLED EXPENSES</b>	<b>411,275</b>	<b>52,360</b>	<b>56,728</b>	<b>48,391</b>	<b>37,077</b>	<b>35,375</b>	<b>82,561</b>	<b>42,285</b>	<b>25,191</b>	<b>379,968</b>	<b>92.39%</b>



**Date:** March 16, 2011 **Job:** P-03-213

**Prepared By:** Jennifer Ares, Resource Sustainability Manager **G/L:** 03-21004

**Subject:** Public Hearing for the Mitigated Negative Declaration Related to the Mountainview Generating Station Brineline Project

**Recommendation:** That the Board finds that the Draft Mitigated Negative Declaration complies with the California Environmental Quality Act by adopting Resolution No. 07-2011 Certifying the Final Mitigated Negative Declaration for the proposed project.

---

At the board workshop on February 8, 2011, the District staff provided an overview of the draft Mitigated Negative Declaration related to the brineline lateral to provide service to Southern California Edison's Mountainview Power Plant located in Redlands. [Workshop Memorandum No. 11-019].

The California Environmental Quality Act requires a local government agency, like the Yucaipa Valley Water District, to act as the lead agency with the responsibility of preparing and distributing environmental documents related to various projects. Based on this requirement, the Yucaipa Valley Water District prepared and distributed a draft Mitigated Negative Declaration for the Mountainview Generating Station brineline service lateral.

During the document review period, the District received one comment letter from the Regional Water Quality Control Board (attached).

Prior to taking any further action on this item, it is necessary to conduct a public hearing to receive additional testimony related to the proposed project.

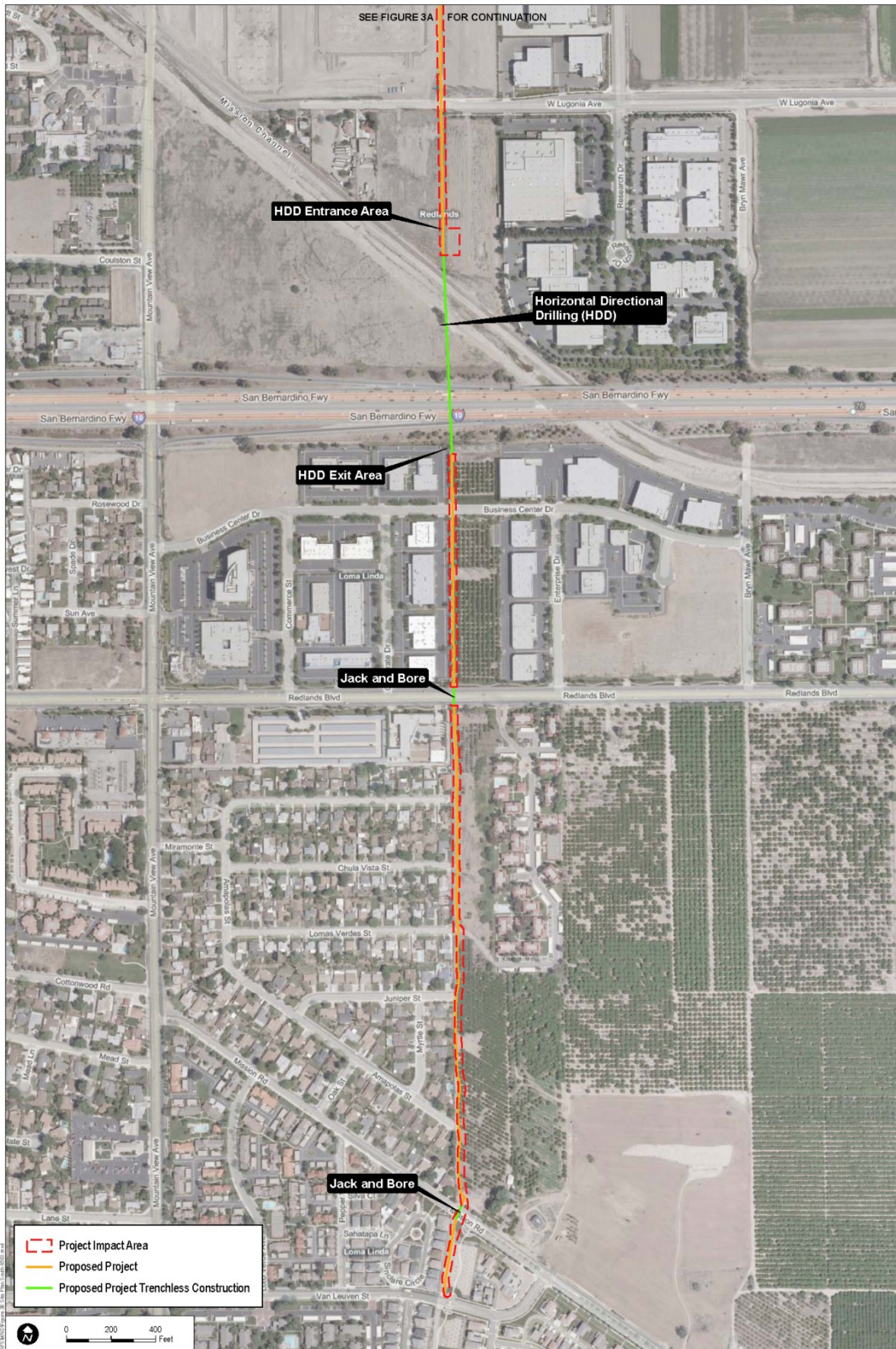
**Public Hearing Process for Consideration of the Mitigated Negative Declaration  
Related to the Mountainview Generating Station Brineline Project**

- Presentation of the Mountainview Generating Station Brineline Project by District staff
- Questions from the Board of Directors
- Open the public hearing stating the time for the record
- Request comments from the public and/or related property owners
- Close the public hearing stating the time for the record
- District staff may provide concluding comments if necessary
- Questions and/or comments from the Board of Directors
- Entertain a motion from the Board of Directors based on material provided and testimony obtained during the public hearing



**FIGURE 3A**  
Site Plan - North

**DUDEK** SOURCE: DUDEK 2010; Bing Maps 2010.  
6583-01  
NOVEMBER 2010  
Mitigated Negative Declaration for the Mountainview Generating Station Brineline Project



**FIGURE 3B**  
**Site Plan - South**

Mitigated Negative Declaration for the Mountainview Generating Station Brinline Project



JERRY BROWN  
GOVERNOR

STATE OF CALIFORNIA  
GOVERNOR'S OFFICE of PLANNING AND RESEARCH  
STATE CLEARINGHOUSE AND PLANNING UNIT



RECEIVED

MAR 11 2011

YUCAIPA VALLEY  
WATER DISTRICT

March 8, 2011

Jospeh Zoba  
Yucaipa Valley Water District  
12770 Second Street  
Yucaipa, CA 92339

Subject: Mountainview Generating Station Brineline Project  
SCH#: 2011021002

Dear Jospeh Zoba:

The State Clearinghouse submitted the above named Mitigated Negative Declaration to selected state agencies for review. On the enclosed Document Details Report please note that the Clearinghouse has listed the state agencies that reviewed your document. The review period closed on March 7, 2011, and the comments from the responding agency (ies) is (are) enclosed. If this comment package is not in order, please notify the State Clearinghouse immediately. Please refer to the project's ten-digit State Clearinghouse number in future correspondence so that we may respond promptly.

Please note that Section 21104(c) of the California Public Resources Code states that:

"A responsible or other public agency shall only make substantive comments regarding those activities involved in a project which are within an area of expertise of the agency or which are required to be carried out or approved by the agency. Those comments shall be supported by specific documentation."

These comments are forwarded for use in preparing your final environmental document. Should you need more information or clarification of the enclosed comments, we recommend that you contact the commenting agency directly.

This letter acknowledges that you have complied with the State Clearinghouse review requirements for draft environmental documents, pursuant to the California Environmental Quality Act. Please contact the State Clearinghouse at (916) 445-0613 if you have any questions regarding the environmental review process.

Sincerely,

Scott Morgan  
Director, State Clearinghouse

Enclosures  
cc: Resources Agency

1400 10th Street P.O. Box 3044 Sacramento, California 95812-3044  
(916) 445-0613 FAX (916) 323-3018 www.opr.ca.gov

**Document Details Report  
State Clearinghouse Data Base**

**SCH#** 2011021002  
**Project Title** Mountainview Generating Station Brineline Project  
**Lead Agency** Yucaipa Valley Water District

**Type** MND Mitigated Negative Declaration  
**Description** Note: Review Per Lead

The proposed project involves the construction and operation of an approximately 2-mile long brine disposal pipeline, as well as a modified brine disposal pump station at the Mountainview Generating Station site, a meeting facility at the connection to the YVWD's Regional Brineline Extension, and a stub-out connection at San Bernardino Avenue for possible future discharge. The brine disposal facility would be a pumped forcemain, and it is anticipated that approximately 0.5 million gallons of concentrated brine discharge would be pumped per day. The 8-inch diameter pipeline is sized to accommodate the peak discharge flowrate from the power plant, as well as 100 gallons per minute of future discharge. The pipeline will be constructed of HDPE, and manholes would be spaced along the pipeline as appropriate.

**Lead Agency Contact**

**Name** Joseph Zoba  
**Agency** Yucaipa Valley Water District  
**Phone** (909) 797-5119 **Fax**  
**email**  
**Address** 12770 Second Street  
**City** Yucaipa **State** CA **Zip** 92339

**Project Location**

**County** San Bernardino  
**City** Redlands, Loma Linda  
**Region**  
**Lat / Long**  
**Cross Streets**  
**Parcel No.**  
**Township** **Range** **Section** **Base**

**Proximity to:**

**Highways** I-10, Hwy 215  
**Airports** SB Int'l & Redlands Muni  
**Railways** BNSF Railway  
**Waterways** Santa Ana River  
**Schools** Several  
**Land Use** GPLU: Designation: Residential, Industrial, Commercial, and Public Open Space  
 Z: Residential, Industrial, Commercial, and Open Space

**Project Issues** Aesthetic/Visual; Agricultural Land; Air Quality; Archaeologic-Historic; Drainage/Absorption; Flood Plain/Flooding; Forest Land/Fire Hazard; Geologic/Seismic; Minerals; Noise; Population/Housing Balance; Public Services; Recreation/Parks; Schools/Universities; Septic System; Sewer Capacity; Soil Erosion/Compaction/Grading; Solid Waste; Toxic/Hazardous; Traffic/Circulation; Vegetation; Water Quality; Water Supply; Wetland/Riparian; Wildlife; Growth Inducing; Landuse; Cumulative Effects

**Reviewing Agencies** Resources Agency; Department of Fish and Game, Region 6; Office of Historic Preservation; Department of Parks and Recreation; Department of Water Resources; California Highway Patrol; Caltrans, District 8; State Water Resources Control Board, Division of Financial Assistance; Regional Water Quality Control Board, Region 8; Native American Heritage Commission

Note: Blanks in data fields result from insufficient information provided by lead agency.

y



California Regional Water Quality Control Board  
Santa Ana Region



Linda S. Adams  
Acting Secretary for  
Environmental Protection

3737 Main Street, Suite 500, Riverside, California 92501-3348  
Phone (951) 782-4130 • FAX (951) 781-6288  
www.waterboards.ca.gov/santaana

Edmund G. Brown, Jr.  
Governor

March 2, 2011

Joseph Zoba, General Manager  
Yucaipa Valley Water District  
12770 Second Street  
Yucaipa, CA 92399

RECEIVED  
MAR - 2 2011  
STATE CLEARING HOUSE

clear  
3/7/11  
e

**MITIGATED NEGATIVE DECLARATION, YUCAIPA VALLEY WATER DISTRICT,  
MOUNTAINVIEW GENERATING STATION BRINELINE PROJECT, REDLANDS AND  
LOMA LINDA, SAN BERNARDINO COUNTY - SCH# 2011021002**

Dear Mr. Zoba:

Regional Board staff have reviewed the Draft Mitigated Negative Declaration (DMND) for the above-referenced Project. The proposed brine pipeline (brineline) will extend approximately two miles from Southern California Edison's Mountainview Generating Station (West San Bernardino Avenue, Redlands) south to the Yucaipa Valley Water District's Regional Brineline Extension (Van Leuven Street, Loma Linda). We have the following comments:

The DMND (Figures 4A and 4B; Mitigation Measure (MM) BIO-3) indicates that the brineline will be advanced by horizontal directional drilling beneath the Mission Channel, during dry periods. MM BIO-3 (p.51) states that "inadvertent returns" of drilling mud, which may enter the Channel as a result of this process, would be removed and no residue will pose a threat to water quality. Based on our experience, the potential for "inadvertent returns" or "frac-outs" to enter the Channel (waters of the United States), and to be suspended by later flows, may occur often enough for the U.S. Army Corps of Engineers (USACE) to take jurisdiction as a precautionary measure. Therefore, we request that you notify the USACE of your plans. If the USACE requires a Clean Water Act Section 404 Permit for a potential, "...discharge of fill to waters of the U.S.," you will also need to apply to the Regional Board for a Section 401 Water Quality Standards Certification.

The "jack and bore" method of trenchless construction will be utilized elsewhere along the brineline route, beneath roadway sites with no adjacent water bodies. Implementation of the Construction General Permit (now Order 2009-0009-DWQ), referenced in MM HYDRO-2 (p.67), will suffice for those sites.

If you have any questions, please contact me at (951) 782-3259 or [grobertson@waterboards.ca.gov](mailto:grobertson@waterboards.ca.gov).

Sincerely,

Glenn Robertson, Engineering Geologist  
Regional Planning Programs Section

cc: State Clearinghouse  
U.S. Army Corps of Engineers, Los Angeles - Jason Lambert

California Environmental Protection Agency

Recycled Paper

**RESOLUTION NO. 07-2011**

**A RESOLUTION OF THE BOARD OF DIRECTORS OF THE  
YUCAIPA VALLEY WATER DISTRICT CERTIFYING THE  
FINAL MITIGATED NEGATIVE DECLARATION FOR THE  
MOUNTAINVIEW GENERATING STATION BRINELINE PROJECT**

WHEREAS, the Yucaipa Valley Water District (the "District") has prepared a Mitigated Negative Declaration for the Mountainview Generating Station Brineline Project (the "Project").

WHEREAS, pursuant to Section 15072 of the California Environmental Quality Act (CEQA) guidelines, the District has made the Mitigated Negative Declaration available for public review to receive comments on the proposed Project.

WHEREAS, the District held a duly-noticed public hearing on December 16, 2011 to determine the adequacy of the Mitigated Negative Declaration and if adequate shall certify the document as compliant with CEQA.

NOW, THEREFORE, THE BOARD OF DIRECTORS OF THE YUCAIPA VALLEY WATER DISTRICT HEREBY FINDS, DETERMINES, RESOLVES AND ORDERS AS FOLLOWS:

Section 1. Based on the Mitigated Negative Declaration, the comments received thereon, and the record before the Board of Directors, the Board hereby finds that the environmental documentation prepared for the Project represents the independent judgment of the Board and the District and that, with implementation of the mitigation monitoring, reporting and compliance program, there is no substantial evidence that the approval of the Project will have any significant environmental impact. The documents and other material which constitute the record on which this decision is based are located in the District's office, located at 12770 Second Street, Yucaipa, California, and are in the custody of the Secretary.

Section 2. Based upon the foregoing, the Board hereby adopts the Mitigated Negative Declaration.

Section 3. The Board hereby orders that the Mitigation Monitoring, Reporting and Compliance Program shall be implemented as set forth.

PASSED, APPROVED and ADOPTED this 16<sup>th</sup> day of March 2011.

YUCAIPA VALLEY WATER DISTRICT

---

Jay Bogh, President Board of Directors

ATTEST:

---

Joseph B. Zoba, General Manager

STATE OF CALIFORNIA

COUNTY OF RIVERSIDE  
AND SAN BERNARDINO

I, Joseph B. Zoba, Secretary of the Board of Directors of the Yucaipa Valley Water District, California, do hereby certify that the foregoing resolution being Resolution No. 07-2011 was duly passed, approved and adopted by said Board, approved and signed by the President, and attested by the Secretary at the Regular Meeting held on the 16<sup>th</sup> day of March 2011, and that the same was passed and adopted by the following vote:

AYES:

NOES:

ABSENT:

ABSTAIN:

Executed this 16<sup>th</sup> day of March 2011 at Yucaipa, CA

---

Joseph B. Zoba, Secretary of the Yucaipa  
Valley Water District and of the Board of  
Directors

(Seal)



**Date:** March 16, 2011 **Job:** Not Applicable  
**Prepared By:** John Hull, Public Works Manager **G/L:** Not Applicable  
**Subject:** Discussion Regarding the Purchase of Two Dump Trucks for the Public Works Department

**Recommendation:** That the Board authorizes the purchase of two replacement dump trucks from H.W. Hunter for a sum not to exceed \$99,000.

The District staff is proposing to replace two existing dump trucks that have been in service for the past twenty years. Unit 29 is a 1991 Chevy C-30 one ton vehicle that was removed from service about a year ago due to a broken frame. Unit 35 is a 1988 Chevy one ton vehicle that is unable to meet the constant demands required of our daily operations. Both vehicles will be added to the list of equipment to be declared surplus.

The Public Works Department staff has compared various brands and models and has determined the following:

- No comparable General Motor vehicles were available;
- Comparable Ford model vehicles were generally higher priced (\$49,495.00 compared to \$47,334 for the 2011 Ram vehicle); and
- The State of California vehicle procurement program had an available Ford 650 at a higher price (\$64,551.00).

Therefore, after thorough research and investigation, the Public Works Department staff recommends the following two vehicles, as replacements.

**2010 Dodge Ram 4500**

4x4 diesel with a 3-4 yard dump bed  
Total cost = \$47,406.59



**2011 Dodge Ram 4500 -**

4x2 diesel with a 3-4 yard dump bed  
Total cost = \$51,487.98





# Jeep®

## **H.W. Hunter, Inc.**

As per our conversation, this is a price quote for a 2010 ram 4500 4x4 with Scelzi dump body. A 2011 ram 5500 4x4 with Scelzi dump body and a Ram 4500 4x2 with Scelzi dump body.

2010 ram 4500 4x4 (this is the vehicle I have in inventory ready to go)

Truck and body	\$43,581.00
Sales tax	\$3,813.34
Ca. tire fee	\$12.25
<b>Total</b>	<b>\$47,406.59</b>

2011 ram 5500 4x4

Truck and body	\$50,799.00
Sales tax	\$4,444.91
Ca. tire fee	\$12.25
<b>Total</b>	<b>\$55,256.16</b>

2011 ram 4500 4x2 (this would be and ordered unit)

Truck and body	\$47,334.00
Sales tax	\$4,141.73
Ca. tire fee	\$12.25
<b>Total</b>	<b>\$51,487.98</b>

I look forward to hearing from you soon.

Bill Czirr

Fleet Manager

H.W. Hunter Dodge, Chrysler, Jeep

### **An Antelope Valley Tradition Since 1944**

1130 Auto Mall Drive • Lancaster, CA 93534 • (661) 948-8411 • FAX (661) 949-7051

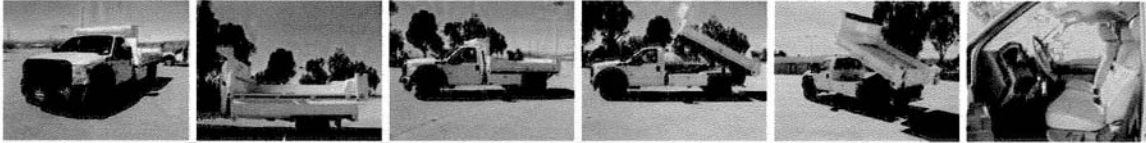
[www.HunterDodge.com](http://www.HunterDodge.com)



[CommericalTruckTrader.com](http://CommericalTruckTrader.com) > 2011 FORD F550 97936275

## 2011 FORD F550 Dump Truck

\$44,995.00



9 photos [12](#)



[View Larger Photos](#)

[Share](#) |

### VEHICLE DETAILS

New/Used: N

Year: 2011

Make: FORD

Model: F550

Location: Valencia, CA

Type: CLASS 5 (GVW 16001 - 19500)

Engine Model: 6.7L V8

Fuel Type: Diesel

Stock Number: BEA87718

VIN Number: 1FDUF5GT9BEA87718

## VEHICLE FEATURES

Air Conditioning, Cruise Control, AM/FM Radio, CD Player, Power Steering, Power Windows, Power Mirrors, Power Locks, Center Arm Rest, Tilt Steering Wheel, Dual Airbags, Anti-Lock Braking System

## VEHICLE DESCRIPTION

2011 FORD F550, REG CAB TIPPER DUMP. 11' Tipper dump body, 6.7L V8 diesel, 6-speed at, ac, am/fm, cc, tilt, high capacity trailer tow pkg, 488 ratio limited slip axle, trailer brake, All vehicles subject to tax, license, documentation, applicable finance charges and smog fees. Sale Prices exclude leases. Rebate subject to change in Ford programs. Subject to prior sale. Rebates available only through Ford Motor Credit financing. All prices are net after rebates. Commercial Rebate \$1,000 . Retail customer cash \$3,500.



Power Ford Valencia

- Toll Free: (877) 868-3097

23920 Creekside Road  
Valencia, CA 91355 ([Map](#))

[See All Inventory](#) |

# DOWNTOWN FORD SALES



525 North 16th Street  
 Sacramento CA 95811-0518  
 Phone (916) 442-6931  
 Fax (916) 442-0805

February 15, 2011

Attached for your consideration are the vehicles awarded to Downtown Ford Sales by the State of California under contract # 1-11-23-20 "Trucks, Vans and Utility Vehicles"; # 1-11-23-22 "Alternative Fuel Vehicles"; and # 1-11-23-11 "Hybrid Vehicles". These contracts continue until September 30, 2011.

The state no longer will charge the piggyback fee so you will not receive any additional billings from the state.

Available this year:  
 Ranger Mini Pickup  
 F150 Half-Ton Pickup (Regular and Alt Fuel)  
 F250  $\frac{3}{4}$ -Ton Pickup and Chassis Cab  
 F350 1-Ton Pickup and Chassis Cab  
 F650 20,000# GVW Chassis Cab  
 Econoline Cargo Van (Regular and Alt Fuel)  
 Econoline Wagon 15 Passenger  
 Escape Small Utility 4WD  
 Expedition Full Size Utility 4WD (Regular and Alt Fuel)  
 Fusion Hybrid  
 Escape Hybrid

We have included popular options from prior years on each vehicle, however if there is a special body or other option you desire please let us know. We can provide refrigeration vans, chipper bodies, aerial lifts, crane bodies, strobe lights, spot lights and many other items. It is our desire to offer you the most complete turn key vehicle delivered to your location.

Sincerely,

Dave Forbess  
 Fleet Manager  
[daveforbess@downtownfordsales.com](mailto:daveforbess@downtownfordsales.com)

Sandra O'Donnell  
 Fleet Administration Manager  
[Sandra@downtownfordsales.com](mailto:Sandra@downtownfordsales.com)



*All Fords are created equal — Downtown Ford makes the difference.*  
[sales@downtownfordsales.com](mailto:sales@downtownfordsales.com) • [www.downtownfordsales.com](http://www.downtownfordsales.com)

## 2011 FORD F650 REGULAR CAB/CHASSIS STATE OF CALIFORNIA CONTRACT #1-11-23-20

SACRAMENTO	\$50,292.00	39
LOS ANGELES	\$50,292.00	81

<b>MAJOR STANDARD EQUIPMENT</b>		
2WD, 176" WHEELBASE (102" CA), 80,000 FRAME, 8500 LBS. FRONT AXLE, 17,500 LBS. REAR AXLE, REAR SHOCKS, 6.14 REAR AXLE RATIO, HYDRAULIC BRAKES, CUMMINS 6.7L 240HP/560 LBS-FT TORQUE, ALLISON 2500 RDS 5 SPEED AUTO TRANS, 45 GAL FUEL TANK, CLOTH SEATS WITH DRIVER AIR RIDE SEAT WITH INTEGRAL AIR PUMP, XL TRIM, (6) 11R22.5 TIRES LOAD RANGE (H), AIR CONDITIONING, AM/FM RADIO, TILT WHEEL, CRUISE CONTROL		
<b>AVAILABLE F650 OPTIONS</b>	<b>PRICE</b>	√
UPGRADE TO XLT PACKAGE (INTERIOR UPGRADE, POWER EQUIPMENT GROUP, AM/FM SINGLE CD/MP3, FRONT TOW HOOKS)	1,034.00	
UPGRADE TO F750	1,198.00	
UPGRADE TO SUPERCAB	Call For Pricing	
UPGRADE TO CREWCAB	4,362.00	
AIRBRAKES	1,425.00	
AIR DRYER	428.00	
TRAILER AIR BRAKE PACKAGE	433.00	
EXHAUST BRAKE	855.00	
FOUR WHEEL DRIVE CONVERSION	Call For Pricing	
<b>DUMP BODY – 10' GODWIN, ½ CAB SHIELD, 3/16" FLOOR, 10 GAUGE HI TENSILE STEEL SIDES AND ENDS, SIDE HEIGHT 23" WITH SLOPED TOP AND BOTTOM RAILS PLUS THREE VERTICAL BRACES, DOUBLE ACTING MANUAL TAILGATE WITH CENTER DITCHGATE, BOLT ON SPREADER APRON, UNDERBODY ARM HOIST MODEL 300U (ELIMINATES DOG HOUSE), HOT SHIFT PTO, ½" HITCH PLATE WITH 30,000 LBS PINTLE HITCH AND SEPARATELY MOUNTED RECEIVER TUBE, POWDER COATED BLACK AT FACTORY (NOTE-MAY HAVE MINOR BLEMISHES FROM SHIPPING)</b>	13,407.00	



**Date:** March 16, 2011 **Job:** Not Applicable  
**Prepared By:** Joseph Zoba, General Manager **G/L:** Not Applicable  
**Subject:** Ratification of Various Contracts for Medical, Dental and Vision Benefits

**Recommendation:** That the Board ratifies the execution of contracts with UHC/Pacificare for medical insurance coverage; Standard Dental, Safeguard Dental and Western Dental for dental insurance coverage; and Standard Vision for vision insurance.

The current distribution of employees for medical insurance is provided below.

Employee Bargaining Units (as of March 2011)	Employee Only	Employee Plus One	Employee Plus Two or More
General Employee Bargaining Unit	20	9	8
Supervisor Employee Bargaining Unit	4	3	2
Exempt Employee Bargaining Unit	2	3	5
Directors	0	0	0
Retirees	1	2	0
COBRA	2	0	0
<b>TOTAL</b>	<b>29</b>	<b>17</b>	<b>15</b>
<b>Percentage Distribution</b>	47.5%	27.9%	24.6%

The District has concluded the open enrollment period for medical, dental, and vision insurance benefits and the employees have elected to receive medical coverage from Pacificare (with chiropractic coverage). The amounts of the associated premiums are attached for each provider.

The ratification of the insurance provider contracts will not immediately impact the costs incurred by the District since the amount paid by the District is part of the negotiation process with each employee group.

Attached is a copy of the premium changes for the medical, dental and vision benefits.

## Yucaipa Valley Water District

Medical, Chiropractic, Dental and Vision Benefit Information  
Effective April 1, 2011

	Employee Only Coverage	Employee plus One Coverage	Family Coverage
<b>PACIFICARE - Health (High Premium)</b>			
Current Medical - Aetna (High Premium)	\$362.53	\$790.30	\$1,033.20
New Rates (Effective April 1, 2011)	\$365.48	\$730.96	\$1,034.31
Difference	\$2.95	(\$59.34)	\$1.11
<b>PACIFICARE - Health (Low Premium)</b>			
Current Medical - Aetna (Low Premium)	\$337.18	\$735.06	\$960.96
New Rates (Effective April 1, 2011)	\$346.96	\$693.92	\$981.90
Difference	\$9.78	(\$41.14)	\$20.94
<b>PACIFICARE - Chiropractic Care</b>			
Current Chiropractic - Not Applicable	--	--	--
New Rates (Effective April 1, 2011)	\$4.73	\$9.47	\$13.40
<b>STANDARD DENTAL</b>			
Current Dental Coverage - Standard Dental	\$44.08	\$84.36	\$112.48
New Rates (Effective April 1, 2011)	\$45.84	\$87.76	\$117.00
Difference	\$1.76	\$3.40	\$4.52
<b>SAFEGUARD DENTAL</b>			
Current Dental Coverage - Safeguard Dental	\$17.86	\$32.15	\$50.00
New Rates (Effective April 1, 2011)	\$17.86	\$32.15	\$50.00
Difference	\$0.00	\$0.00	\$0.00
<b>WESTERN DENTAL</b>			
Current Dental Coverage - Western Dental	\$14.58	\$25.59	\$33.45
New Rates (Effective April 1, 2011)	\$15.00	\$26.33	\$34.42
Difference	\$0.42	\$0.74	\$0.97
<b>STANDARD VISION</b>			
Current Vision - Standard Vision	\$7.96	\$15.92	\$22.36
New Rates (Effective April 1, 2011)	\$8.44	\$16.88	\$23.72
Difference	\$0.48	\$0.96	\$1.36

**Proposed Medical Plans - 2011 Open Enrollment**

All Plans will include a High Premium and Low Premium

Effective April 1, 2011 the benefit amount will be \$791

MEMBER BENEFITS (For a full explanation of benefits please review the Schedule of Benefits)	EXISTING		OPTION A		RENEWAL RATES		OPTION B		NEW QUOTE		OPTION C		NEW QUOTE	
	AETNA HMO Plan 1.1 HIGH HMO Current 2010-2011	AETNA HMO Plan 15.1 LOW HMO Current 2010-2011	AETNA HMO PLAN 1.4 HIGH HMO New Rates 2011-2012	AETNA HMO Plan 15.4 LOW HMO New Rates 2011-2012	AETNA HMO PLAN 4.4 HIGH HMO New Rates 2011-2012	AETNA HMO Plan 15.4 LOW HMO New Rates 2011-2012	AETNA HMO PLAN 4.4 HIGH HMO New Rates 2011-2012	AETNA HMO Plan 15.4 LOW HMO New Rates 2011-2012	UHC/PACIFICARE HMO-MIO HIGH HMO New Plan 2011-2012	UHC/PACIFICARE HMO-MIO HIGH HMO New Plan 2011-2012	UHC/PACIFICARE HMO-MILH LOW HMO New Plan 2011-2012	UHC/PACIFICARE HMO-MIO HIGH HMO New Plan 2011-2012	UHC/PACIFICARE HMO-MILH LOW HMO New Plan 2011-2012	UHC/PACIFICARE HMO-MIO HIGH HMO New Plan 2011-2012
Annual Co-Pay Maximum per Individual/Family	\$1500/\$3000	\$2500/\$5,000	\$1500/\$3000	\$2500/\$5,000	\$1500/\$3000	\$2500/\$5,000	\$2500/\$5,000	\$1500/\$3000	\$1500/\$3000	\$1500/\$3000	\$1500/\$3000	\$1500/\$3000	\$1500/\$3000	\$1500/\$3000
Maximum Benefits	Unlimited	Unlimited	Unlimited	Unlimited	Unlimited	Unlimited	Unlimited	Unlimited	Unlimited	Unlimited	Unlimited	Unlimited	Unlimited	Unlimited
Office Visits (physician/specialist)	\$10	\$10	\$10	\$20	\$10	\$20	\$20	\$10	\$10	\$10	\$10	\$10	\$10	\$10
Preventive Care (Federal mandated changes - TBD)	-	-	Covered 100%	Covered 100%	Covered 100%	Covered 100%	Covered 100%	Covered 100%	Covered 100%	Covered 100%	Covered 100%	Covered 100%	Covered 100%	Covered 100%
Urgent Care/Emergency Services	\$35/\$100	\$35/\$100	\$35/\$100	\$35/\$100	\$35/\$100	\$35/\$100	\$35/\$100	\$35/\$100	\$35/\$100	\$35/\$100	\$35/\$100	\$35/\$100	\$35/\$100	\$35/\$100
Inpatient Hospital Coverage	Paid in Full	\$500	\$100	\$500	\$100	\$500	\$500	\$100	\$100	\$100	\$100	\$100	\$100	\$100
Outpatient Surgery	Paid in Full	\$200	\$100	\$300/\$100	\$100	\$300/\$100	\$300/\$100	\$100	\$100	\$100	\$100	\$100	\$100	\$100
Durable Medical Equipment (\$2,000 annual benefit)	50% of rate	50% of rate	50% of rate	50% of rate	50% of rate	50% of rate	50% of rate	50% of rate	50% of rate	50% of rate	50% of rate	50% of rate	50% of rate	50% of rate
Inpatient/Outpatient Mental Health	Paid in Full	\$500	\$100/\$10	\$500/\$20	\$100/\$10	\$500/\$20	\$500/\$20	\$100/\$10	\$100/\$10	\$100/\$10	\$100/\$10	\$100/\$10	\$100/\$10	\$100/\$10
Inpatient/Outpatient Substance Abuse	Paid in Full	\$500	\$100/\$10	\$500/\$20	\$100/\$10	\$500/\$20	\$500/\$20	\$100/\$10	\$100/\$10	\$100/\$10	\$100/\$10	\$100/\$10	\$100/\$10	\$100/\$10
Pharmacy Co-pay (generic/brand name/non-formulary)	\$10/\$20/\$35	\$15/\$25/\$40	\$10/\$20/\$35	\$15/\$25/\$40	\$15/\$25/\$40	\$15/\$25/\$40	\$15/\$25/\$40	\$15/\$25/\$40	\$15/\$25/\$40	\$15/\$25/\$40	\$15/\$25/\$40	\$15/\$25/\$40	\$15/\$25/\$40	\$15/\$25/\$40
Mail Order Drug	31-90 day	31-90 day	31-90 day	31-90 day	31-90 day	31-90 day	31-90 day	31-90 day	31-90 day	31-90 day	31-90 day	31-90 day	31-90 day	31-90 day
	\$20/\$40/\$70	\$30/\$50/\$80	\$20/\$40/\$70	\$30/\$50/\$80	\$30/\$50/\$80	\$30/\$50/\$80	\$30/\$50/\$80	\$30/\$50/\$80	\$30/\$50/\$80	\$30/\$50/\$80	\$30/\$50/\$80	\$30/\$50/\$80	\$30/\$50/\$80	\$30/\$50/\$80
Employee Only	362.53	337.18	402.86	374.27	388.21	374.27	374.27	388.21	388.21	388.21	388.21	388.21	388.21	388.21
Employee + One Dependent	790.30	735.06	878.24	815.92	868.10	815.92	815.92	868.10	868.10	868.10	868.10	868.10	868.10	868.10
Family (3+)	1033.20	960.96	1148.13	1066.66	1134.88	1066.66	1066.66	1134.88	1134.88	1134.88	1134.88	1134.88	1134.88	1134.88

Additional Cost for Chiropractic Care

	EE ONLY	EE + ONE	FAMILY
AETNA CHIROPRACTIC CARE			
**Chiro - 20 visits per year @ specialist copay	5.99	12.18	16.24
UHC/PACIFICARE CHIROPRACTIC CARE			
**Chiro - 30 visits per year @ \$10 copay	4.73	9.47	13.40



**Date:** March 16, 2011 **Job:** Not Applicable

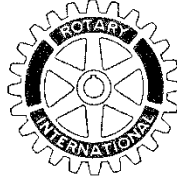
**Prepared By:** Brent Anton, Engineering Project Integrator **G/L:** Not Applicable

**Subject:** Authorization of Water Service Change for the Proposed Park on 5<sup>th</sup> Street and Wildwood Canyon Road, Yucaipa

**Recommendation:** That the Board authorizes the District staff to change the drinking water service lateral to a recycled water service lateral for a cost not to exceed \$6,000.

The Rotary Club of Yucaipa is proposing to construct a park on the northwest corner of Wildwood Canyon Road and 5<sup>th</sup> Street. The proposed project will require a new ¾-inch recycled water service to be installed as a replacement of the drinking water service that previously served a residential home on the same property. Since the change in type of water (from potable water to recycled water) is preferred, the District staff recommends that we incur the cost related to the new recycled water service so potable water is not used for irrigation purposes at this site.





## *Rotary Club of Yucaipa*

Post Office Box 661 • Yucaipa, California 92399-0661

January 28<sup>th</sup>, 2011

TO: Yucaipa Valley Water District

Mr. Costello,

The Yucaipa Rotary Club is very excited about this project and we are working on several ideas for park like areas throughout the City:

- 1) Firefighter of the Year recognition at the Fire Museum
- 2) Police Officer of the Year recognition (site to be determined)
- 3) Citizen of the Year recognition possible as part of the Rotary grove at City hall.
- 4) A Park at Wildwood & 5<sup>th</sup>
- 5) Possible something uptown as part of the street improvements.

The one we wanted to start with is the park at 5<sup>th</sup> & Wildwood. This is an initial drawing of the proposed park, showing what is currently existing on the property plus showing the proposed parking lot. We have a couple questions as to what the Yucaipa Valley Water District can do to assist in the planning and building of this park, so we can proceed with pricing the full cost of building the park. This way the club can decide if building the park is financially feasible and come up with ideas to raise the funds to complete it.

### QUESTIONS:

- 1) Can we get a water meter?
- 2) If so would there be a cost?
- 3) Would it be potable or non-potable water?
- 4) What can the YVWD do to assist in planning and building the park?

Our Club is planning a Visioning meeting with our Rotary district on February 12<sup>th</sup>, any input we can get back from the City before then would be appreciated.

Thank you,

David Melcher  
Yucaipa Rotary Club  
Serving Yucaipa Since 1956  
(909) 797-0437  
david2@davidmelcher.com

# DIRECTOR COMMENTS

# ANNOUNCEMENTS