



# Yucaipa Valley Water District

## Notice and Agenda of a Board Workshop

Tuesday, July 26, 2011 at 4:00 p.m.

---

MEETING LOCATION: District Administration Building  
12770 Second Street, Yucaipa

MEMBERS OF THE BOARD: Director Ian Cuthbertson, Division 1  
Director Bruce Granlund, Division 2  
Director Jay Bogh, Division 3  
Director Lonni Granlund, Division 4  
Director Hank Wochholz, Division 5

---

- I. Call to Order
- II. Public Comments: At this time, members of the public may address the Board of Directors on matters within its jurisdiction; however, no action or significant discussion may take place on any item not on the agenda. To provide comments on specific agenda items, please complete a speaker's request form and provide that form to the Board Secretary prior to the commencement of the Board meeting.
- III. Staff Comments
- IV. Presentations
  - A. Recomputation of Ambient Water Quality in the Santa Ana Watershed for the Period 1990 to 2009 [[Workshop Memorandum No. 11-104 - Page 3 of 75](#)]
- V. Construction Activities and Operational Updates
  - A. Overview of Modifications to Pressure Zone 12 in Calimesa [[Workshop Memorandum No. 11-105 - Page 5 of 75](#)]
  - B. Overview of Changed Biological Conditions at the Wochholz Regional Water Recycling Facility [[Workshop Memorandum No. 11-106 - Page 7 of 75](#)]
- VI. Capital Improvement Projects
  - A. Discussion Regarding Engineering Services for the Design of Additional Infrastructure in Crow Street [[Workshop Memorandum No. 11-107 - Page 8 of 75](#)]
  - B. Status Report on the Construction of the Yucaipa Valley Regional Brineline [[Workshop Memorandum No. 11-108 - Page 20 of 75](#)]

---

Any person with a disability who requires accommodation in order to participate in this meeting should telephone Erin Anton at (909) 797-5117, at least 48 hours prior to the meeting in order to make a request for a disability-related modification or accommodation.

Materials related to an item on this agenda submitted to the Board of Directors after distribution of the workshop packet are available for public inspection during normal business hours at the District office located at 12770 Second Street, Yucaipa. Meeting material is also be available on the District's website at [www.yvwd.dst.ca.us](http://www.yvwd.dst.ca.us)

- C. Status Report on the Construction of Drinking Water Pipelines in Second Street, Yucaipa [[Workshop Memorandum No. 11-109 - Page 23 of 75](#)]
- VII. Administrative Issues
  - A. Request to Purchase Emergency Radio Communication Equipment [[Workshop Memorandum No. 11-110 - Page 26 of 75](#)]
  - B. Property Tax Liens for Delinquent Sewer Utility Accounts [[Workshop Memorandum No. 11-111 - Page 27 of 75](#)]
  - C. Request to Encroach on Yucaipa Valley Water District Sewer Easement at 11312 Fremont Street, Yucaipa [[Workshop Memorandum No. 11-112 - Page 34 of 75](#)]
  - D. Claim for Damages Related to Sinkhole on Fifth Street, Yucaipa [[Workshop Memorandum No. 11-113 - Page 39 of 75](#)]
  - E. Request to Purchase Two Replacement Multi-Function Copiers [[Workshop Memorandum No. 11-114 - Page 66 of 75](#)]
- VIII. Director Comments
- IX. Closed Session
  - A. Conference with Labor Negotiator (Government Code 54957.6)  
District Negotiator: Joseph Zoba, General Manager  
Employee Organization: IBEW Local Union 14356 - YVWD Employees Association
  - B. Conference with Labor Negotiator (Government Code 54957.6)  
District Negotiator: Joseph Zoba, General Manager  
Employee Organization: Supervisor Bargaining Unit
  - C. Conference with Labor Negotiator (Government Code 54957.6)  
District Negotiator: Joseph Zoba, General Manager  
Employee Organization: Confidential Employee Bargaining Unit
  - D. Conference with Labor Negotiator (Government Code 54957.6)  
District Negotiator: Joseph Zoba, General Manager  
Employee Organization: Exempt Employee Bargaining Unit
- X. Adjournment



**Date:** July 26, 2011

**Subject:** **Recomputation of Ambient Water Quality in the Santa Ana Watershed for the Period 1990 to 2009**

---

The Yucaipa Valley Water District has been an active member of the TIN/TDS Task Force<sup>1</sup> created in 1995 to evaluate the impact of total inorganic nitrogen (TIN) and total dissolved solids (TDS) on water resources in the Santa Ana River Watershed. The Task Force members and the Regional Water Quality Control Board continue to actively manage and resolve water quality issues in the Santa Ana Watershed.

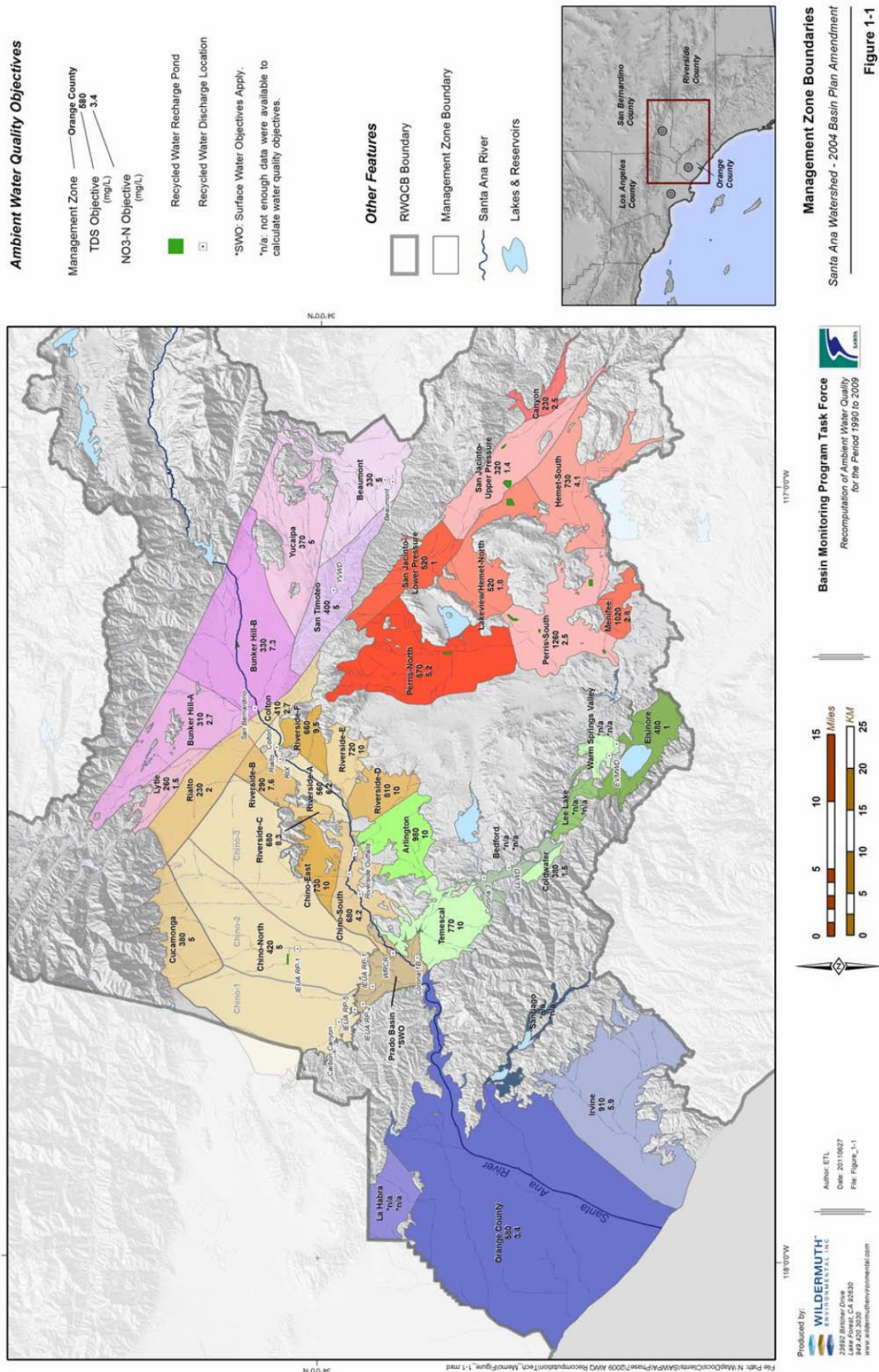
As part of the 2004 Basin Plan amendment adopted by the Regional Water Quality Control Board, the affected parties have agreed to recompute the ambient water quality for each management zone every three years. This provides the regulatory tools necessary for preparing waste discharge permits for sewer treatment plants throughout the watershed.

A draft technical memorandum illustrating the recomputation of ambient water quality has been distributed for review by the Task Force members. This report provides a detailed description of the methodology used to determine the ambient water quality throughout the watershed for the period of 1990 to 2009.

During this workshop item, a brief presentation will be provided to summarize the current water quality conditions of the Yucaipa, San Timoteo, and Beaumont Management Zones.

---

<sup>1</sup> Additional information about the TIN/TDS Task Force administered by the [Santa Ana Watershed Project Authority](http://www.sawpa.org/TIN-TDSTaskForce.mht) can be found at: <http://www.sawpa.org/TIN-TDSTaskForce.mht>





**Date:** July 26, 2011

**Subject:** Overview of Modifications to Pressure Zone 12 in Calimesa

---

The Yucaipa Valley Water District staff has been actively working towards the completion of water distribution system improvements within Pressure Zone 12. These improvements are designed to merge the Pressure Zone 12 infrastructure in Yucaipa with the Pressure Zone 12 infrastructure in Calimesa.

These improvements will provide for improved efficiencies throughout Pressure Zone 12. Additionally, a number of customers will receive higher water pressure at their homes and businesses.

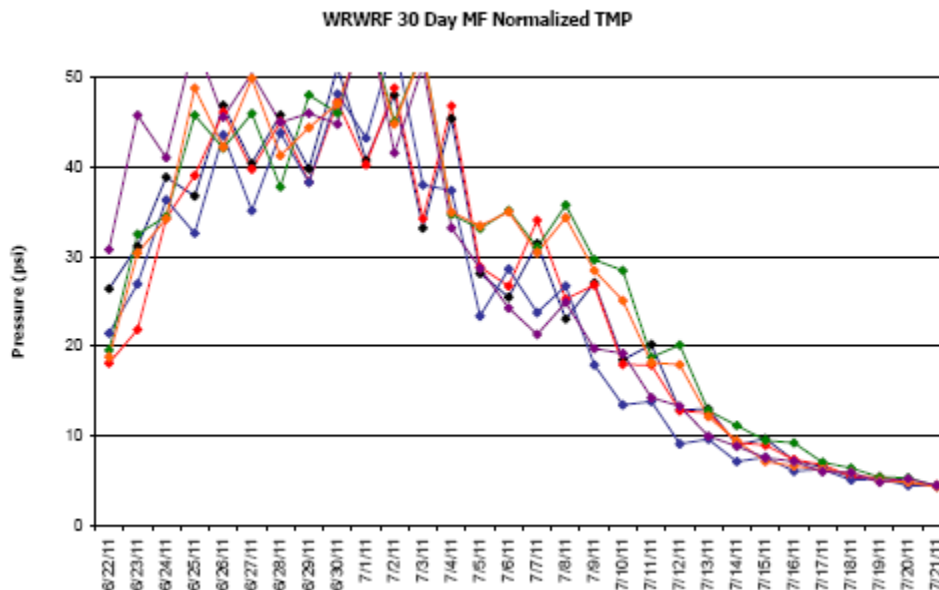
The purpose of this workshop item is to provide an overview of the activities necessary to complete this consolidation to improve our overall system efficiency.



**Date:** July 26, 2011

**Subject:** Overview of Changed Biological Conditions at the Wochholz Regional Water Recycling Facility

In late June, a condition of excessive algae growth was experienced in the primary and secondary basins at the Wochholz Regional Water Reclamation Facility (WRWRF). This episode significantly changed the microbiological conditions at the sewer treatment plant which resulted in a significant loading of particles onto the microfiltration system. The increased trans-membrane pressure (TMP) of each microfiltration (MF) rack is illustrated in the graph below.



Considering the amount of particulate loading on the microfiltration membranes, the sewer treatment plant performed exceptionally well due in large part to the responsive and dedicated operational staff at the facility. After the algae is eliminated from the treatment process, it takes time for the proper biological conditions to be reestablished and return the treatment plant to normal conditions.

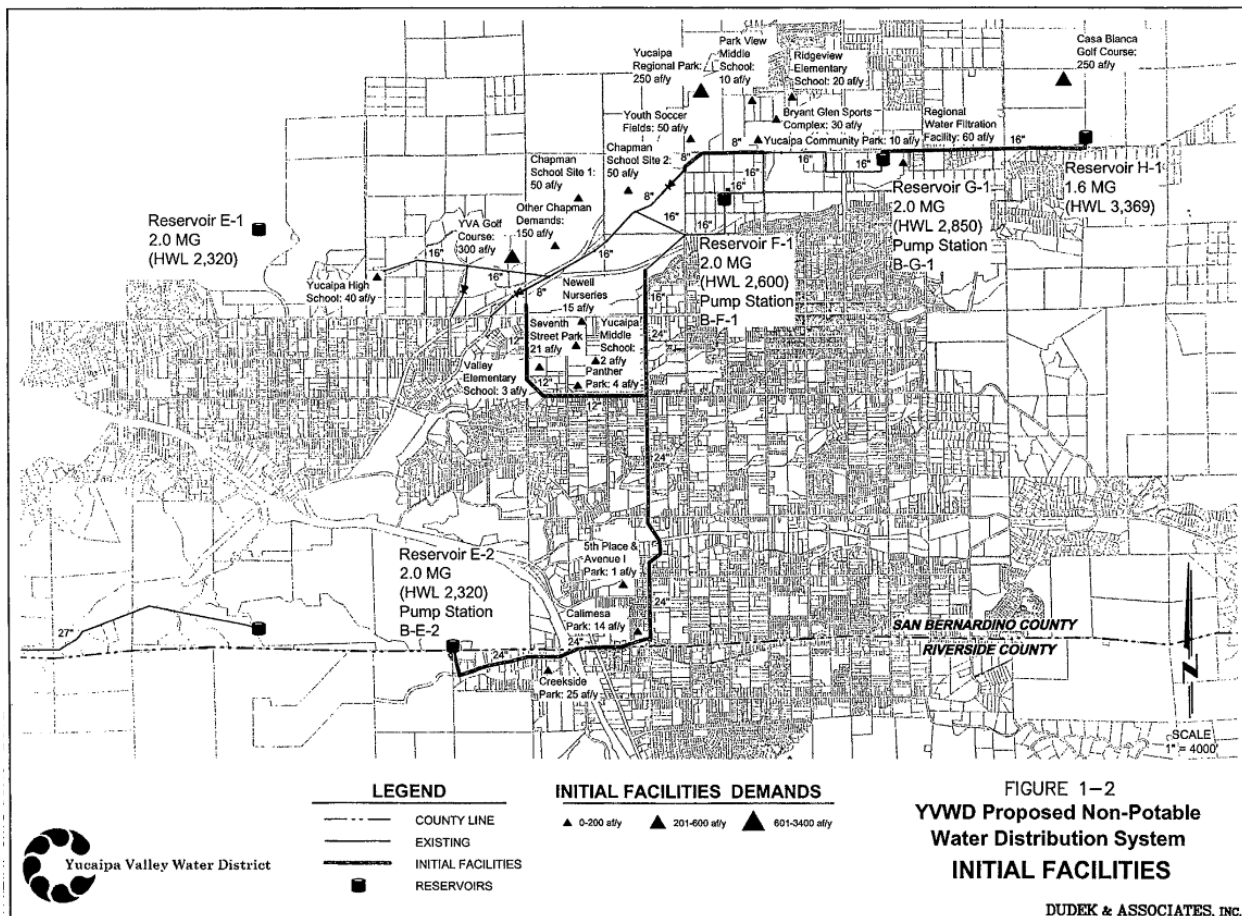
While the timing of this biological change corresponds to a discharge of raw imported water from the water filtration facility, the District staff will continue to monitor the situation to determine how the soluble nutrient balance of raw wastewater and seasonal temperature fluctuations can be associated with this significant biological change.



Date: July 26, 2011

Subject: Discussion Regarding Engineering Services for the Design of Additional Infrastructure in Crow Street

In April 2002, the District entered into a contract with Dudek for engineering services related to the design of recycled water infrastructure throughout the District [DM 02-037]. This design contract included the entire backbone recycled water infrastructure needed to connect the Wochholz Regional Water Recycling Facility to the Yucaipa Valley Regional Water Filtration Facility. The design was completed and most of the backbone infrastructure was constructed. A segment of recycled water pipeline on Crow Street, immediately east of the Wochholz Regional Water Recycling Facility, was not completed to allow for construction activity associated with the expansion and upgrade of the sewer treatment plant.



With the completion of the improvements at the sewer treatment plant, the District staff is now prepared to recommend the construction of the remaining recycled water pipelines in Crow Street. However, while reviewing the project, the District staff has identified an opportunity to reconstruct additional infrastructure in this same roadway. Specifically, the construction of the recycled water pipeline should include the replacement of a sewer mainline and potable water pipeline. While the original design drawings only included a recycled water pipeline which was to be installed to avoid the existing water and sewer mainlines, it would be more advantageous and prudent to construct the ultimate infrastructure needed in this roadway at the same time.

The District staff has requested a proposal from Dudek to update the existing recycled water pipeline design to also include the replacement of the existing 8-inch sewer mainline with a 24-inch HDPE sewer mainline and the replacement of the existing 6-inch PVC water pipeline with a 16-inch ductile iron potable water pipeline. Since the design base sheets already exist, it seems most prudent to authorize Dudek to add these new facilities onto the existing design drawings.

**DUDEK**

MAIN OFFICE  
605 THIRD STREET  
ENCINITAS, CALIFORNIA 92024  
T 760.942.5147 T 800.450.1818 F 760.632.0164

June 15, 2011

5744-01

Joseph Zoba, General Manager  
Yucaipa Valley Water District  
12270 Second Street  
Yucaipa, CA 92270

**Subject: Proposal for Engineering Services - Crow Street Water & Sewer Pipeline Design**

Dear Mr. Zoba:

It is our understanding that the District has decided to move forward with implementation of improvements within Crow Street, adjacent to the Wochholz Water Recycling Facility (WRF). The Crow Street alignment extends from the Wochholz WRF to County Line Road, east of the plant entrance gate.

Previously, Dudek provided evaluation and design of the non-potable water distribution system improvements within the Crow Street right-of-way, including:

- **Crow Street Non-Potable Pipelines (from Wochholz WRF to NR-10.3, and from NB-10.3 to County Line Road):** These pipelines were identified to be 16- to 24-inch pressurized non-potable transmission mains. The new pipelines will convey non-potable water from the Wochholz WRF to the NR-10.3 reservoir, which will subsequently be pumped into Zones 11 and 12 of the District's non-potable water distribution system through the NB-10.3 dual zone booster station. It is further envisioned that the 24-inch Crow Street Non-Potable Pipeline (prior to NR-10.3) will provide the primary conveyance of non-potable water into and out of various recharge & recovery well sites proposed within Zones 10 and 11, in the vicinity of the Wochholz WRF. Dual non-potable pipelines will receive flow from the NB-10.3 booster station, and convey those flows to County Line Road, where the 11 Zone pipeline will be capped and the 12 Zone pipeline will be connected to the existing 24-inch non-potable pipeline constructed under Phase 1A of the recycled water program.

As you may recall, the Crow Street alignment also contains the primary water and sewer facilities serving the Wochholz WRF. Preliminary analysis of the Crow Street alignment was conducted in 2008 to determine the extent to which these facilities would impact the proposed non-potable pipeline. It was determined that minimum separation requirements between the non-potable, water and wastewater pipelines would be difficult to maintain.

The District decided in 2008 to postpone replacement of both the existing water and sewer pipelines within the Crow Street alignment. It was envisioned that the need to replace the water and sewer facilities might increase, and the District indicated that the water and/or sewer facilities may be added to the design process as additional services. Replacement of the water and sewer facilities has indeed been determined to be advantageous for the District. This proposal provides the necessary services to update the previously prepared Crow Street Non-Potable Water Pipeline design to include the follow additional facilities:

- **24-inch Gravity Replacement Sewer:** A new gravity sewer will be designed within the Crow Street alignment. This sewer will replace the existing 8-inch sewer pipeline. The new gravity sewer will connect to the existing manhole in the vicinity of the Wochholz WRF entrance gate. A sewer bypass plan will be required to maintain sewer flow to the plant during construction of this new

WWW.DUDEK.COM

Joe Zoba, General Manager

Subject: Crow Street Water and Sewer Pipeline Replacement

---

influent sewer. The upstream terminus of the new sewer will be in the vicinity of the intersection of Crow Street and County Line Road.

- **16-inch Potable Water Replacement Pipeline:** A new potable waterline will be designed within the Crow Street alignment to replace the existing 6-inch waterline. The new waterline will serve the on-site demands of the WWTP, as well as future water demands in the adjacent developing areas. The design will include high lining of the existing 6-inch water pipeline to maintain service to the plant during construction. The new water pipeline will connect to the existing manhole in the vicinity of the Wochholz WRF entrance gate, and traverse the Crow Street alignment to a connection point in the vicinity of the intersection of Crow Street and County Line Road.

A scope and fee for design of the identified 24-inch non-potable pipeline, 24-inch sewer pipeline, and 16-inch water pipeline was previously submitted to the District in February 2008 (copy included for your review). The project fee for final design of the three facilities at that time was based on finalization of existing plans previously developed by Dudek under Phase IB of the District non-potable water distribution system program. Since that time, Dudek has prepared the plans and specifications for the non-potable water pipeline only. It was then and remains our intent to utilize the previously prepared information to avoid duplication of previous effort. At the direction of District staff, we have prepared the following revised scope for adding the 24- and 16-inch NB-10.3 discharge pipelines, 24-inch sewer and 16-inch water pipelines to the previously prepared non-potable water pipeline drawing set.

### Scope of Services

**Task I – Project Management, Meetings & Site Visits.** The design team will visit the project site to verify that the available pipeline corridor is unchanged since the preparation of the original drawing set. Changes to the alignment will be documented and the original plans updated to reflect such changes. It is anticipated that we will use existing surveying information developed for the previous non-potable design effort. We will discuss geotechnical considerations with our subconsultant, and may include that subconsultant during the project site visit. The site visit will allow team members to visually verify existing conditions within the pipeline corridor.

Dudek has previously developed final design plans for the non-potable pipeline alignment, and submitted those plans to District staff. We will re-verify that the previous plans remain viable with respect to addition of the water and sewer pipelines. It is noted that the original design anticipated the addition of these pipeline in the future. Therefore, assuming there have been no significant changes, the Crow Street alignment is anticipated to accommodate all three facilities.

During our original discussions, Crow Street was assumed to be closed during construction of the three new pipeline facilities, and that design plans would be prepared based on that assumption. Occasional chemical and other deliveries are anticipated to be necessary during the construction period. The contract documents will require the Contractor to provide trench plating and/or other appurtenances necessary for occasional temporary road re-opening to accommodate the needs of the plant.

Dudek will conduct the following project management tasks for the project:

- **Project Meetings.** It is assumed that we will continue our regular monthly meetings to report progress on the Crow Street project. Our Project Manager and other appropriate team members will participate in these meetings to report on progress, to discuss potential project challenges, and to address other project issues.

**DUDEK**

Joe Zoba, General Manager

Subject: Crow Street Water and Sewer Pipeline Replacement

---

- ❑ **Quality Assurance Reviews:** Quality assurance reviews will be conducted at the 50 and 100 percent design phases prior to deliverable submittals to the District.
- ❑ **Monthly Progress & Other Reporting.** Monthly status reports will be provided to the District, including definition of work completed, work to be completed in the coming month, project deliverable status, schedule and budget status, coordination or other action items, and other project considerations.

**Task 2 - Final Design.** Dudek will conduct the necessary work to add the new water and sewer pipelines to the previously-prepared 40-scale plans and construction specifications for the District to subsequently bid. Services are proposed to include:

- ❑ **Utility Research:** Research and documentation of existing conditions and utilities was completed during design non-potable water pipeline plans. We will verify this information and use the previously developed information, as appropriate. If additional utility information is identified, those utilities will be researched and included on the plans.
- ❑ **Surveying:** Additional surveying is not anticipated to be required, and as such these services are not included in this proposal. If additional surveying is required, these services will be negotiated as additional services.
- ❑ **Geotechnical Investigation:** At this time, we are not anticipating needing geotechnical services for the design. If geotechnical services are determined to be required, we will negotiate them at the time as additional services.
- ❑ **Sewer & Water Bypass Plans:** Dudek will prepare sewer bypass and water highline plans for the project to maintain utility operations during the construction period.
- ❑ **Construction Sequencing:** Identification of critical construction sequencing operations to maintain existing water and sewer operations during construction. We will develop a construction sequence plan that will define how the project will be constructed. Additionally, the close proximity of the various utilities will be evaluated to avoid conflicts between the three pipelines during construction, as well as other existing utilities.
- ❑ **Corrosion Protection:** The scope assumes that the District prefers not to have cathodic protection. Corrosion protection will be achieved by using polyethylene encasement for ductile iron pipe, appropriate pipe lining, and non-corrosive pipe where applicable. It is currently envisioned that the 24-inch non-potable and 24-inch sewer facilities will be constructed using high density polyethylene (HDPE) materials, and the 16-inch water pipeline will be ductile iron materials.
- ❑ **Property Ownership:** We have previously investigated property ownership in the vicinity of Crow Street. We are aware that the District has acquired additional property in the vicinity of the project. We will revisit our analyses to confirm that the new pipeline alignments will not impact existing easements or require additional easements. It is assumed that no easements will be required. If assistance is required, additional services will be negotiated at that time.
- ❑ **Utility Locating:** Potholing of proposed pipeline crossing locations will be necessary to facilitate construction operations. Also, the connection points at both ends of the new utility pipelines will be potholed, as appropriate. It is proposed that District forces be used to conduct necessary potholing

**DUDEK**

Joe Zoba, General Manager

Subject: Crow Street Water and Sewer Pipeline Replacement

---

for the project design. Approximately 10 pothole locations are anticipated. If the District would prefer the use of a third party potholing firm, we would subcontract with Underground Solutions for the services and will negotiate these services as an extra cost.

- **30 Percent Design Stage:** We will use existing survey topographic survey, horizontal alignment, utility research, geophysical survey and potholing information for development of the 30 percent design plans. Dudek will submit five (5) 11x17 sets of plan & profile drawings identifying the horizontal and vertical alignment of the new utilities. A list of specifications sections to be added to the previous design documents will be included at the 30 percent design stage. As the design incorporates new water and sewer pipelines within the common alignment with non-potable facilities, we will re-evaluate the alignment of the previously designed 24-inch non-potable pipelines to facilitate construction of all pipelines within the existing alignment.
- **50 Percent Design Stage:** After review and comment by the District, Dudek will proceed to the 50 percent design stage. Vertical information from the site survey, record drawings and potholing will be plotted in profile view and the vertical profile of the pipeline will be drafted. In addition, preliminary connection details, title sheet and notes sheets will be drafted. The location of required air-vac and blow-off valves will be plotted. Connection details will be drafted, labeled and stationed. The construction sequencing and utility bypass plans will be defined for District review and approval.

The combination of 30 percent design information, horizontal design data, and pipeline vertical profile represent the contents of the 50 percent design submittal. The new utilities will be shown on different profiles to facilitate clarity. Dudek will submit to the District five (5) 11x17 sets of plan view drawings identifying the horizontal alignments. A preliminary draft of the technical specifications and a preliminary estimate of probable construction cost will be included at the 50 percent design stage.

- **100 Percent Design Stage:** After review and comment by the District, Dudek will proceed to the 100 percent or final design stage. At this stage, we expect only minor formatting alterations to the plan and profile sheets, and comments or corrections to the connection details as required by the District. Dudek will incorporate the District's final comments and proceed with the final printing. Final approved design drawings will be submitted on 24x36 mylar, signed by the Engineer-in-Charge. A final construction cost opinion will be provided. An electronic copy of the design drawings in AutoCAD format and the design specifications in MS Word format will be submitted at the completion of the 100 percent design stage.
- **Permitting:** Dudek will coordinate the acquisition of agency permits required for construction and approval of the project. Traffic control plans are not anticipated to be required as a result of the proposed closure of Crow Street during construction. Encroachment permits are also not anticipated as Crow Street is a plant access road and not a public right-of-way. Dudek will identify the necessary permits, and begin processing of those that the District desires to include in the contract documents. Any remaining permit requirements will be identified in the specifications as to be obtained by the Contractor during construction. Required permit application or processing fees, if any, will be paid directly by the District.
- **Contract Documents:** Dudek will utilize the District's basic detailed bid documents and amend those documents for the project as necessary. Our assumption as to the level of work for this task

Staff Type : Billable Rate :	LABOR HOURS					Total Hours	SUBCON	TOTAL
	PD/PM \$198	PE \$155	CADD \$125	CI/WP \$85				
<b>TASK 1 - PROJECT MANAGEMENT, MEETINGS &amp; SITE VISITS</b>								
Task 1.1 - Project Management	16					16		\$ 3,168
Task 1.2 - Project Meetings	8	8				16		\$ 2,824
Task 1.3 - Project Site Visits	8	8				16		\$ 2,824
<b>Subtotal Task 1:</b>	<b>32</b>	<b>16</b>	<b>0</b>	<b>0</b>	<b>0</b>	<b>48</b>	<b>\$ -</b>	<b>\$ 8,816</b>
<b>TASK 2 - FINAL DESIGN</b>								
Task 2.1 - Utility Research		2				2		\$ 310
Task 2.2 - Surveying		2				2		\$ 310
Task 2.3 - Sewer & Water Bypass Plans	4	12	26			42		\$ 5,902
Task 2.3 - Construction Sequencing	1	2				3		\$ 508
Task 2.4 - Corrosion Protection	1	2				3		\$ 508
Task 2.5 - Property Ownership		2				2		\$ 310
Task 2.6 - Utility Locating	1	4				5		\$ 818
Task 2.7 - 30 Percent Design Preparation	16	30	72	4		122		\$ 17,158
Task 2.8 - 50 Percent Design Preparation	8	20	40	4		72		\$ 10,024
Task 2.9 - 100 Percent Design Preparation	4	12	20	4		40		\$ 5,492
Task 2.10 - Construction Permitting	4	16		4		24		\$ 3,612
Task 2.11 - Specs & Contract Document Preparation	16	40		16		72		\$ 10,728
<b>Subtotal Task 3:</b>	<b>55</b>	<b>144</b>	<b>158</b>	<b>32</b>	<b>0</b>	<b>389</b>	<b>\$ -</b>	<b>\$ 55,680</b>
<b>TASK 3 - BIDDING ASSISTANCE</b>								
Task 3.1 - Bidding Assistance	4	16	4	4		28		\$ 4,112
<b>Subtotal Task 4:</b>	<b>4</b>	<b>16</b>	<b>4</b>	<b>4</b>	<b>0</b>	<b>28</b>	<b>\$ -</b>	<b>\$ 4,112</b>
<b>OTHER DIRECT COSTS</b>								
Printing/Reproduction								\$ 550
Local Travel								\$ 850
<b>TOTAL PROJECT FEE</b>	<b>91</b>	<b>176</b>	<b>162</b>	<b>36</b>	<b>0</b>	<b>465</b>	<b>\$ -</b>	<b>\$ 70,008</b>

NOTES:

1. Assumes preparation of separate plan & profile sheet for each utility, necessary to assure proper coordination and construction of each utility pipeline.
2. Assumes potholing provided by District forces. Dudek can provide these services at additional cost.
3. Assumes use of existing base files from previously-prepared non-potable water pipeline design.
4. Permitting assumed to include City of Yucaipa encroachment permit for County Line Road, no permitting required for Crow Street (District owned roadway).
5. Permit costs are assumed to be paid by the District, with Dudek coordination of permit acquisition.



Yucaipa Valley Water District

# Memorandum

DIRECTOR MEMORANDUM NUMBER 02-037

DATE : April 3, 2002

SUBJECT : Authorization to Enter Into a Contract with Dudek &amp; Associates for Engineering Services Related to the Non-Potable Water Distribution System Final Design

---

**BACKGROUND:**

The District is proposing to begin design and construction of the initial phase of the Non-Potable Water Distribution System. This System will provide non-potable water to approximately 17 existing irrigation customers throughout the District's water service area. The implementation of this project will reduce the District's maximum-day potable water demand by over 15%, or approximately 2.30 mgd. On an annual basis, the initial phase of the Non-Potable Water Distribution System is expected to deliver 1,360 acre-feet, which is equivalent to the amount of water produced from one of the District's best water production wells.<sup>1</sup> This immediate reduction in potable water demand will allow the District to store additional water supplies in our groundwater basins, and thereby reduce the current overdraft of our local groundwater supply.

On February 19, 2002, the District staff received the final Preliminary Design Report for the initial phase of the District's Non-Potable Water Distribution System. The report addresses approximately 40,000 linear feet of non-potable water distribution piping ranging in diameter between 8 and 24 inches, one 2.0 million gallon non-potable water storage reservoir, and one 600 Hp non-potable water pump station. Also included with this report was the 30% preliminary design drawings. A map of the proposed initial phase facilities is attached as Figure 1-2.

The attached scope of services is for Dudek & Associates to complete the final design and bid documents associated with this project. The final design drawings and bid documents will be released to contractors in January 2003 with the Board awarding a contract in March 2003. The reservoir, booster station and approximately 7.5 miles of large diameter pipelines are anticipated to take one year to construct. Therefore, this project will be fully operational in about twenty-four months.

---

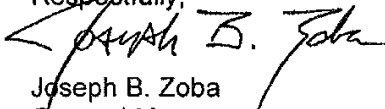
<sup>1</sup> During 2001, the District had four wells produce more than 1,000 acre-feet during the twelve-month period. These wells included: Well No. 46 at 1,919 AF; Well No. 53 at 1,102 AF; Well No. 48 at 1,061 AF; and Well No. 2 at 1,013 AF. These four wells produced about fifty percent of the total water delivered by the District last year.

Director Memorandum No. 02-037  
April 3, 2002  
Page 2

RECOMMENDATION:

Authorize District staff to execute a contract with Dudek & Associates for a sum not to exceed \$576,240.

Respectfully,



Joseph B. Zoba  
General Manager

**YUCAIPA VALLEY WATER DISTRICT  
NON-POTABLE WATER DISTRIBUTION SYSTEM DESIGN - INITIAL SYSTEM  
PROPOSAL FOR ENGINEERING SERVICES**

**EXHIBIT B - PROPOSED PROJECT FEE**

Dudek & Associates, Inc.  
March 2002

Staff Type: Billable Rate:	LABOR HOURS					Total Hours	SUB. FEE	TOTAL
	P \$140	PM/SE \$125	PE \$95	CADD \$75	CL/WP \$55			
<b>ELEMENT 1 - COMMON SERVICES</b>								
Task 1.1 - Project Kick-Off Meeting .....	8	8	8		8	32		\$3,320
Task 1.2 - Surveying / Aerial Mapping (entire project) .....	1	8	24	24	4	61	\$107,538	\$112,978
Task 1.3 - Geotechnical Services (entire project) .....	1	8	24	8	4	45	\$67,200	\$71,440
Task 1.4 - Project Management / Quality Assurance .....	60	60		48	24	192		\$20,820
<i>Subtotal Element 1:</i>	70	84	56	80	40	330	\$174,738	\$208,558
<b>ELEMENT 2 - PIPELINE CONSTRUCTION DOCUMENTS</b>								
Task 2.1 - Plan & Profile Base Mapping .....	2	16	24	80		122		\$10,560
Task 2.2 - Prepare Pipeline Plan Set #1 (24 Sheets):								
Title Sheet, Index, Vicinity Map .....		1	2	8		11		\$915
Notes & Abbreviations Sheet .....		1	4	8		13		\$1,105
P&P Sheet (Station 0+00 to 10+00) - Crow Street .....		1	4	12		17		\$1,405
P&P Sheet (Station 10+00 to 18+00) - Crow Street .....		1	4	16		21		\$1,705
P&P Sheet (Station 18+00 to 26+00) - Crow Street .....		1	4	16		21		\$1,705
P&P Sheet (Station 26+00 to 34+00) - Crow Street .....		1	4	16		21		\$1,705
P&P Sheet (Station 34+00 to 42+00) - Crow Street .....		1	4	16		21		\$1,705
P&P Sheet (Station 42+00 to 50+00) - Crow Street .....		1	4	16		21		\$1,705
P&P Sheet (Station 50+00 to 58+00) - Crow Street .....		1	4	12		17		\$1,405
P&P Sheet (Station 58+00 to 66+00) - Crow Street .....		1	4	16		21		\$1,705
P&P Sheet (Station 66+00 to 74+00) - Crow Street/County Line Road .....		1	4	16		21		\$1,705
P&P Sheet (Station 74+00 to 82+00) - County Line Road .....		1	4	12		17		\$1,405
P&P Sheet (Station 82+00 to 90+00) - County Line Road .....		1	4	12		17		\$1,405
P&P Sheet (Station 90+00 to 98+00) - County Line Road .....		1	4	16		21		\$1,705
P&P Sheet (Station 98+00 to 106+00) - County Line Road .....		1	4	16		21		\$1,705
P&P Sheet (Station 106+00 to 114+00) - County Line Road .....		1	4	12		17		\$1,405
P&P Sheet (Station 114+00 to 122+00) - County Line Road .....		1	4	16		21		\$1,705
P&P Sheet (Station 122+00 to 130+00) - County Line Road .....		1	4	16		21		\$1,705
P&P Sheet (Station 130+00 to 138+00) - County Line Road .....		1	4	12		17		\$1,405
P&P Sheet (Station 138+00 to 146+00) - County Line Road .....		1	4	16		21		\$1,705
P&P Sheet (Station 146+00 to 154+00) - County Line Road .....		1	4	16		21		\$1,705
P&P Sheet (Station 154+00 to 162+00) - County Line Road .....		1	4	12		17		\$1,405
P&P Sheet (Station 162+00 to 170+00) - County Line Road .....		1	4	16		21		\$1,705
P&P Sheet (Station 170+00 to 178+00) - County Line Road .....		1	4	16		21		\$1,705
Detail Sheet - 1-10 Encroachment Details .....		2	12	16		30		\$2,590
Detail Sheet - Pipeline Boring Details (at Calimera) .....	1	8	20	24		53		\$4,840
Detail Sheet - Connection & Appurtenance Details .....	1	4	12	24		41		\$3,580
Detail Sheet - Miscellaneous Details Sheet 1 .....		2	8	20		30		\$2,510
Detail Sheet - Miscellaneous Details Sheet 2 .....		2	8	20		30		\$2,510
Traffic Control Plan Sheet 1 .....		2	8	16		26		\$2,210
Traffic Control Plan Sheet 2 .....		2	8	16		26		\$2,210
Task 2.3 - Prepare Pipeline Plan Set #2 (20 Sheets):								
Title Sheet, Index, Vicinity Map .....			2	8		11		\$915
Notes & Abbreviations Sheet .....			1	4		13		\$1,105
P&P Sheet (Station 0+00 to 10+00) - 5th Street .....			1	4	12	17		\$1,405
P&P Sheet (Station 10+00 to 20+00) - 5th Street .....			1	4	12	17		\$1,405
P&P Sheet (Station 20+00 to 30+00) - 5th Street .....			1	4	12	17		\$1,405
P&P Sheet (Station 30+00 to 40+00) - 5th Street .....			1	4	12	17		\$1,405
P&P Sheet (Station 40+00 to 50+00) - 5th Street .....			1	4	12	17		\$1,405
P&P Sheet (Station 50+00 to 60+00) - 5th Street .....			1	4	12	17		\$1,405
P&P Sheet (Station 60+00 to 70+00) - 5th Street .....			1	4	12	17		\$1,405
P&P Sheet (Station 70+00 to 80+00) - 5th Street .....			1	4	12	17		\$1,405
P&P Sheet (Station 80+00 to 90+00) - 5th Street .....			1	4	12	17		\$1,405
P&P Sheet (Station 90+00 to 100+00) - 5th Street .....			1	4	12	17		\$1,405
P&P Sheet (Station 100+00 to 110+00) - 5th Street .....			1	4	12	17		\$1,405
P&P Sheet (Station 110+00 to 117+00) - 5th Street .....			1	4	12	17		\$1,405
Detail Sheet - Yucaipa/Wildwood Creek Crossing Details .....	2	8	24	24		58		\$5,360
Detail Sheet - Connection & Appurtenance Details .....	1	4	12	24		41		\$3,580
Detail Sheet - Miscellaneous Details Sheet 1 .....		2	8	20		30		\$2,510
Detail Sheet - Miscellaneous Details Sheet 2 .....		2	8	20		30		\$2,510
Traffic Control Plan Sheet 1 .....		2	8	16		26		\$2,210
Traffic Control Plan Sheet 2 .....		2	8	16		26		\$2,210

**YUCAIPA VALLEY WATER DISTRICT  
NON-POTABLE WATER DISTRIBUTION SYSTEM DESIGN - INITIAL SYSTEM  
PROPOSAL FOR ENGINEERING SERVICES**

**EXHIBIT B - PROPOSED PROJECT FEE**

Dudek & Associates, Inc.  
March 2002

Staff Type: Billable Rate:	LABOR HOURS					Total Hours	SUB. FEE	TOTAL
	P \$140	PM/SE \$125	PE \$95	CADD \$75	CL/WP \$55			
<b>Task 2.4 - Prepare Pipeline Plan Set #3 (26 Sheets):</b>								
<i>Title Sheet, Index, Vicinity Map</i> .....		1	2	8		11		\$915
<i>Notes &amp; Abbreviations Sheet</i> .....		1	4	8		13		\$1,105
<i>P&amp;P Sheet (Station 0+00 to 10+00) - Avenue E</i> .....		1	4	12		17		\$1,405
<i>P&amp;P Sheet (Station 10+00 to 20+00) - Avenue E</i> .....		1	4	12		17		\$1,405
<i>P&amp;P Sheet (Station 20+00 to 3+00) - Avenue E &amp; 7th Street</i> .....		1	4	16		21		\$1,705
<i>P&amp;P Sheet (Station 3+00 to 13+00) - 7th Street</i> .....		1	4	12		17		\$1,405
<i>P&amp;P Sheet (Station 13+00 to 23+00) - 7th Street</i> .....		1	4	12		17		\$1,405
<i>P&amp;P Sheet (Station 23+00 to 30+00) - 7th Street</i> .....		1	4	16		21		\$1,705
<i>P&amp;P Sheet (Station 0+00 to 9+00) - Oak Glen Road (west)</i> .....		1	4	16		21		\$1,705
<i>P&amp;P Sheet (Station 9+00 to 18+00) - Oak Glen Road (west)</i> .....		1	4	16		21		\$1,705
<i>P&amp;P Sheet (Station 18+00 to 20+30) - Oak Glen Road (west)</i> .....		1	4	16		21		\$1,705
<i>P&amp;P Sheet (Station 12+00 to 22+00) - Oak Glen Road (east)</i> .....		1	4	12		17		\$1,405
<i>P&amp;P Sheet (Station 22+00 to 32+00) - Oak Glen Road (east)</i> .....		1	4	12		17		\$1,405
<i>P&amp;P Sheet (Station 32+00 to 42+00) - Oak Glen Road (east)</i> .....		1	4	12		17		\$1,405
<i>P&amp;P Sheet (Station 42+00 to 52+00) - Oak Glen Road (east)</i> .....		1	4	12		17		\$1,405
<i>P&amp;P Sheet (Station 52+00 to 62+00) - Oak Glen Road (east)</i> .....		1	4	12		17		\$1,405
<i>P&amp;P Sheet (Station 62+00 to 70+00) - Oak Glen Road (east)</i> .....		1	4	16		21		\$1,705
<i>P&amp;P Sheet (Station 70+00 to 80+00) - Oak Glen Road (east)</i> .....		1	4	12		17		\$1,405
<i>P&amp;P Sheet (Station 80+00 to 84+00) - Oak Glen Road (east)</i> .....		1	4	12		17		\$1,405
<i>Detail Sheet - Connection &amp; Appurtenance Detail Sheet 1</i> .....	1	4	12	24		41		\$3,580
<i>Detail Sheet - Connection &amp; Appurtenance Detail Sheet 2</i> .....	1	4	12	24		41		\$3,580
<i>Detail Sheet - Miscellaneous Details Sheet 1</i> .....		2	8	20		30		\$2,510
<i>Detail Sheet - Miscellaneous Details Sheet 2</i> .....		2	8	20		30		\$2,510
<i>Traffic Control Plan Sheet 1</i> .....		2	8	16		26		\$2,210
<i>Traffic Control Plan Sheet 2</i> .....		2	8	16		26		\$2,210
<i>Traffic Control Plan Sheet 3</i> .....		2	8	16		26		\$2,210
<b>Task 2.5 - Construction Specifications (3 sets)</b> .....	8	40	120		80	248		\$21,920
<b>Task 2.6 - Opinions of Probable Cost (3 sets)</b> .....	4	16	32	8	16	76		\$7,080
<b>Task 2.7 - Permit Applications &amp; Submittals:</b>								
<i>Caltrans Entry &amp; Encroachment Permits</i> .....		16	80	48	8	152		\$13,640
<i>SBCFCD Encroachment Permit</i> .....		8	40	24	8	80		\$7,040
<i>City Encroachment Permits (Yucaipa &amp; Calimesa)</i> .....		16	48	32	8	104		\$9,400
<i>DHS Approval Processing</i> .....		8	24	16	8	56		\$4,920
<b>Subtotal Element 2:</b>	21	230	770	1,240	128	2,389	50	\$204,880
<b>ELEMENT 3 - PS/RESERVOIR CONSTRUCTION DOCUMENTS</b>								
<b>Task 3.1 - Prepare PS/Reservoir Plan Set (38 Sheets):</b>								
<i>Title Sheet, Index, Vicinity Map</i> .....		1	2	8		11		\$915
<i>Notes &amp; Abbreviations Sheet</i> .....		1	4	8		13		\$1,105
<i>Site Grading &amp; Paving Plan (Sheet C-1)</i> .....		2	16	24		42		\$3,570
<i>Site Piping Plan (Sheet C-2)</i> .....		1	12	16		29		\$2,465
<i>Site Piping Profiles (Sheet C-3)</i> .....		1	8	24		33		\$2,685
<i>Miscellaneous Site Details Sheet 1 (Sheet C-4)</i> .....		2	8	20		30		\$2,510
<i>Miscellaneous Site Details Sheet 2 (Sheet C-5)</i> .....		2	8	20		30		\$2,510
<i>Reservoir Plan &amp; Appurtenances (Sheet M-1)</i> .....	1	2	8	24		35		\$2,950
<i>Reservoir Inlet/Outlet Piping (Sheet M-2)</i> .....		2	8	16		26		\$2,210
<i>Reservoir Inlet/Outlet Piping &amp; Details (Sheet M-3)</i> .....		2	8	24		34		\$2,810
<i>Reservoir Stairway &amp; Hatch Details (Sheet M-4)</i> .....		1	16	32		49		\$4,045
<i>Pump Station Plan (Sheet M-5)</i> .....	2	8	20	32		62		\$5,580
<i>Pump Station Sections (Sheet M-6)</i> .....		4	16	24		44		\$3,820
<i>Miscellaneous Mechanical Details Sheet 1 (Sheet M-7)</i> .....		2	8	20		30		\$2,510
<i>Miscellaneous Mechanical Details Sheet 2 (Sheet M-8)</i> .....		2	8	20		30		\$2,510
<i>Chlorine Feed/Circulation System (Sheet M-9)</i> .....	2	8	24	24		58		\$5,360
<i>Structural Notes (Sheet S-1)</i> .....		1	8	8		17		\$1,485

**YUCAIPA VALLEY WATER DISTRICT  
NON-POTABLE WATER DISTRIBUTION SYSTEM DESIGN - INITIAL SYSTEM  
PROPOSAL FOR ENGINEERING SERVICES**

**EXHIBIT B - PROPOSED PROJECT FEE**

Dudek & Associates, Inc.  
March 2002

Staff Type: Billable Rate:	LABOR HOURS					Total Hours	SUB. FEE	TOTAL	
	P \$140	PM/SE \$125	PE \$95	CADD \$75	CL/WP \$55				
Reservoir Structural Plan & Sections (Sheet S-2) .....		2	16	16		34		\$2,970	
Pump Station Elevations (Sheet S-3) .....	1	4	20	32		57		\$4,940	
Pump Station Floor Plan/Roof Plan (Sheet S-4) .....		2	16	24		42		\$3,570	
Pump Station Structural Sections / Crane Plan (Sheet S-5) .....		2	24	32		58		\$4,930	
Miscellaneous Structural Details Sheet 1 (Sheet S-6) .....		2	8	20		30		\$2,510	
Miscellaneous Structural Details Sheet 2 (Sheet S-7) .....		2	8	20		30		\$2,510	
Electrical Notes, Symbols & Abbreviations (Sheet E-1) .....		1	1	2		4	\$1,500	\$1,870	
Single Line Diagrams & Electrical Site Plan (Sheet E-2) .....			1	2		3	\$3,500	\$3,745	
Power & Signal Plan (Sheet E-3) .....			1	2		3	\$3,500	\$3,745	
Conduit & Panel Schedule / Lighting Plan (Sheet E-4) .....		1	1	2		4	\$3,500	\$3,870	
Controls & Control Details (Sheet E-5) .....			1	2		3	\$3,500	\$3,745	
Telemetry Plan & Details (Sheet E-6) .....			1	2		3	\$2,500	\$2,745	
Miscellaneous Electrical Details (Sheet E-7) .....		1	1	2		4	\$2,000	\$2,370	
P&ID Notes, Legend & Abbreviations (Sheet I-1) .....		1	8	8		17		\$1,485	
P&ID Sheet 1 (Sheet I-2) .....	1	4	16	24		45		\$3,960	
P&ID Sheet 2 (Sheet I-3) .....	1	4	16	24		45		\$3,960	
Landscape Plan & Notes (Sheet L-1) .....		1	8	4		13	\$2,500	\$3,685	
Irrigation Plan & Notes (Sheet L-2) .....		1	8	4		13	\$2,500	\$3,685	
Landscape & Irrigation Details (Sheet L-3) .....		1	4	4		9	\$2,000	\$2,805	
Traffic Control Plan Sheet 1 .....		2	8	16		26		\$2,210	
Traffic Control Plan Sheet 2 .....		2	8	16		26		\$2,210	
Task 3.2 - Construction Specifications (PS & Reservoir) .....	8	32	88		40	168		\$15,680	
Task 3.3 - Opinions of Probable Cost (PS & Reservoir) .....	1	4	24	8	8	45		\$3,960	
<i>Subtotal Element 3:</i>	17	111	469	610	48	1,255	\$27,000	\$136,200	
<b>ELEMENT 4 - BIDDING ASSISTANCE</b>									
Task 4.1 - Pre-Bid Assistance (four separate bid packages) .....	4	24	48	16	16	108		\$10,200	
Task 4.2 - Post-Bid Assistance (four separate bid reviews) .....	2	8	32	16	16	74		\$6,400	
<i>Subtotal Element 4:</i>	6	32	80	32	32	182	\$0	\$16,600	
<b>PHASE 5 - CONSTRUCTION ASSISTANCE (not in contract)</b>									
Task 5.1 - Pre-Construction Conference Attendance .....	To Be Negotiated at District's Discretion						0		\$0
Task 5.2 - RFC/RFI Response .....	To Be Negotiated at District's Discretion						0		\$0
Task 5.3 - Shop Drawing Review .....	To Be Negotiated at District's Discretion						0		\$0
Task 5.4 - Change Order/Supplemental Drawings .....	To Be Negotiated at District's Discretion						0		\$0
Task 5.5 - Construction Meeting Attendance .....	To Be Negotiated at District's Discretion						0		\$0
Task 5.6 - Site Visitation .....	To Be Negotiated at District's Discretion						0		\$0
Task 5.7 - Construction Report Reviews .....	To Be Negotiated at District's Discretion						0		\$0
Task 5.8 - Geotechnical Observation .....	To Be Negotiated at District's Discretion						0		\$0
Task 5.9 - Record Drawing Preparation .....	To Be Negotiated at District's Discretion						0		\$0
<i>Subtotal Element 5:</i>	0	0	0	0	0	0	\$0	\$0	
<b>OTHER DIRECT COSTS</b>									
Printing/Reproduction .....									\$7,500
Local Travel .....									\$2,500
<i>Subtotal ODCs:</i>									\$10,000
<b>TOTAL PROJECT FEE</b>	<b>114</b>	<b>457</b>	<b>1,375</b>	<b>1,962</b>	<b>248</b>	<b>4,156</b>	<b>\$201,738</b>	<b>\$576,238</b>	

**NOTES:**

- Element 5 is currently not included in the requested Scope of Services. Tasks are defined for District review purposes only. Dudek is prepared to negotiate these services at the District's discretion.
- Service under Task 2.7 do not include payment of permit fees. Permit fees will be paid by the District once they are determined.
- Proposed fee of \$576,238 represents a value of 4.56 percent of the estimated construction cost of \$12,640,000, including all costs for surveying, geotechnical, project management, and bidding service
- No markup is included for subconsultants and other direct costs. (0% markup)

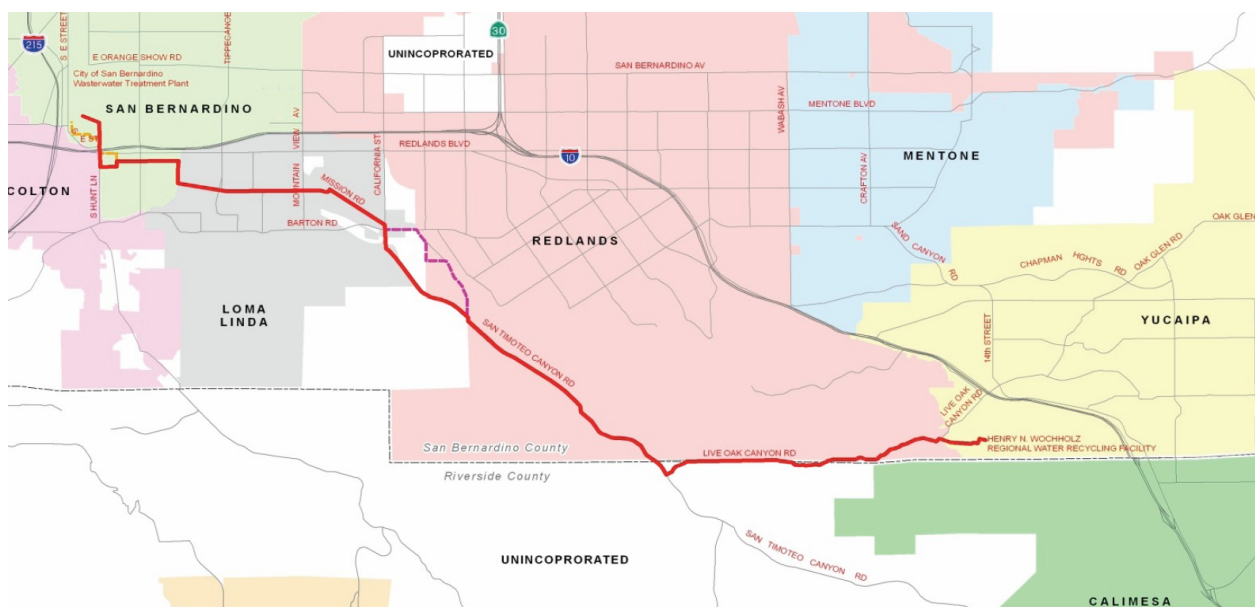
**Date:** July 26, 2011

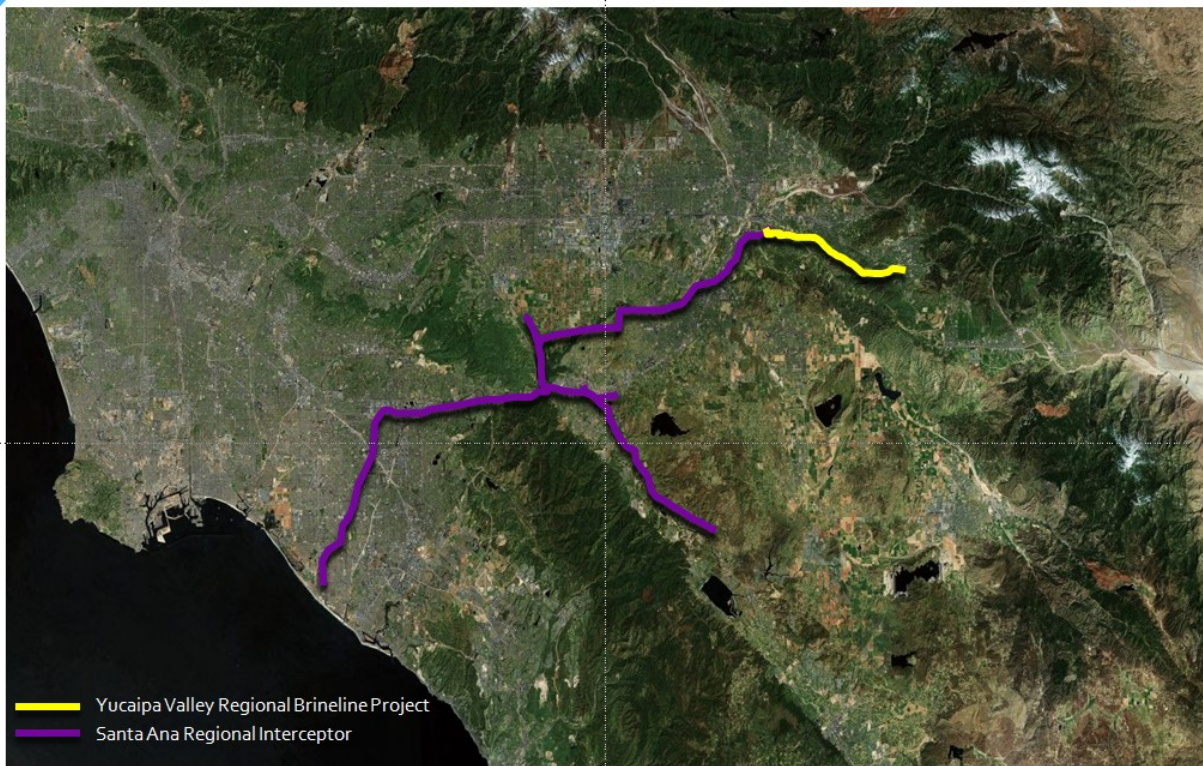
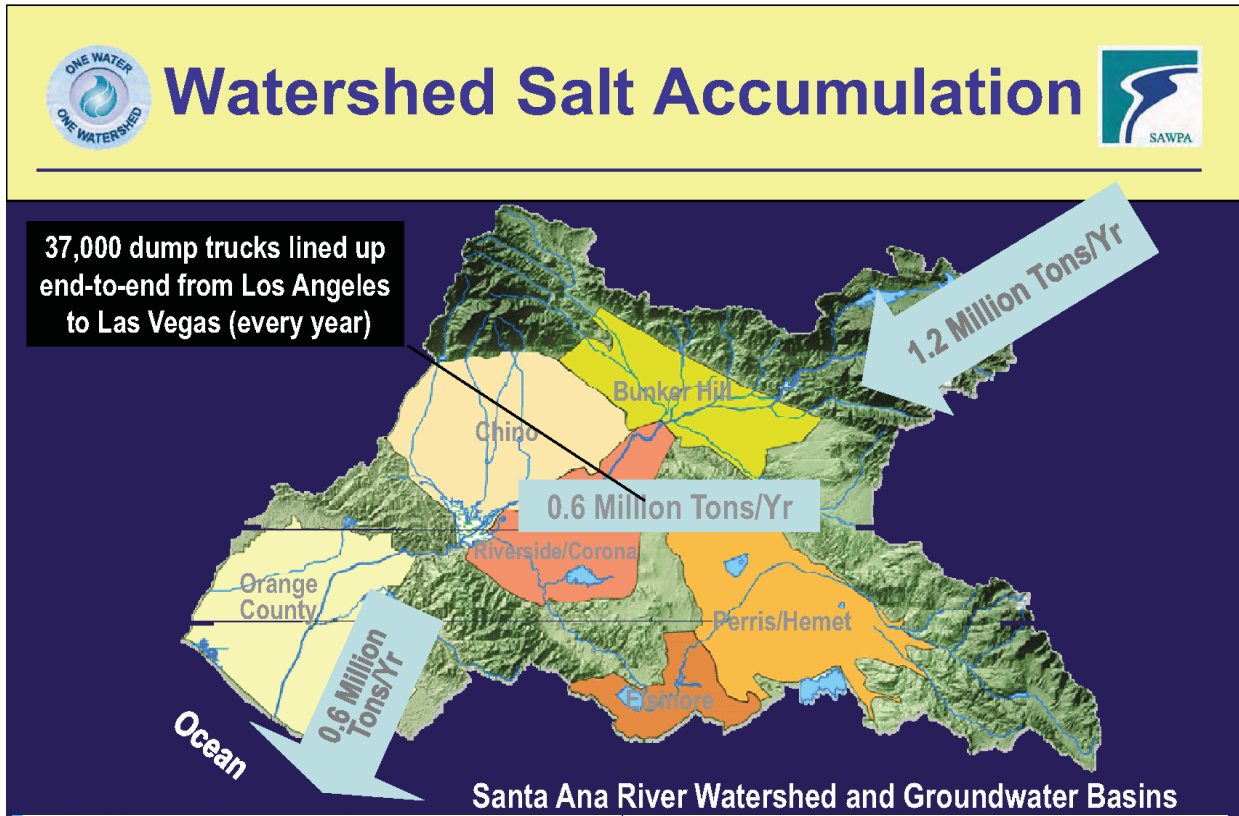
**Subject:** Status Report on the Construction of the Yucaipa Valley Regional Brineline

Yucaipa Valley Water District is in the process of constructing the Yucaipa Valley Regional Brineline in order to produce recycled water that complies with groundwater basin objectives as established by the Regional Water Quality Control Board. In order to comply with these limits, the District is required to add a reverse osmosis process to the wastewater treatment plant. This will enable the District to remove salts and minerals from depositing in to the groundwater basin. The proposed reverse osmosis system will produce salt water, referred to as “brine”, that must be sent to the Pacific Ocean so it does not impact any fresh water supplies downstream of the Yucaipa Valley.

The Yucaipa Valley Regional Brineline Project consists of a 15-mile pipeline through which the District can safely and effectively dispose of the salt water produced. This pipeline will commence at the Wochholz Regional Water Recycling Facility and terminate at an existing brineline near the I-215 and I-10 Interchange. At this point the existing brineline extends another 73 miles traversing San Bernardino, Riverside and Orange counties to Orange County Sanitation District Wastewater Treatment Plant No. 2 in Huntington Beach, where the salt water is treated with domestic sewage and then sent to the ocean or reclaimed by Orange County Water District.

During this agenda item, the District staff will be providing an update of the construction status of the Yucaipa Valley Regional Brineline Project.





Yucaipa Valley Regional Water Supply Renewal Project



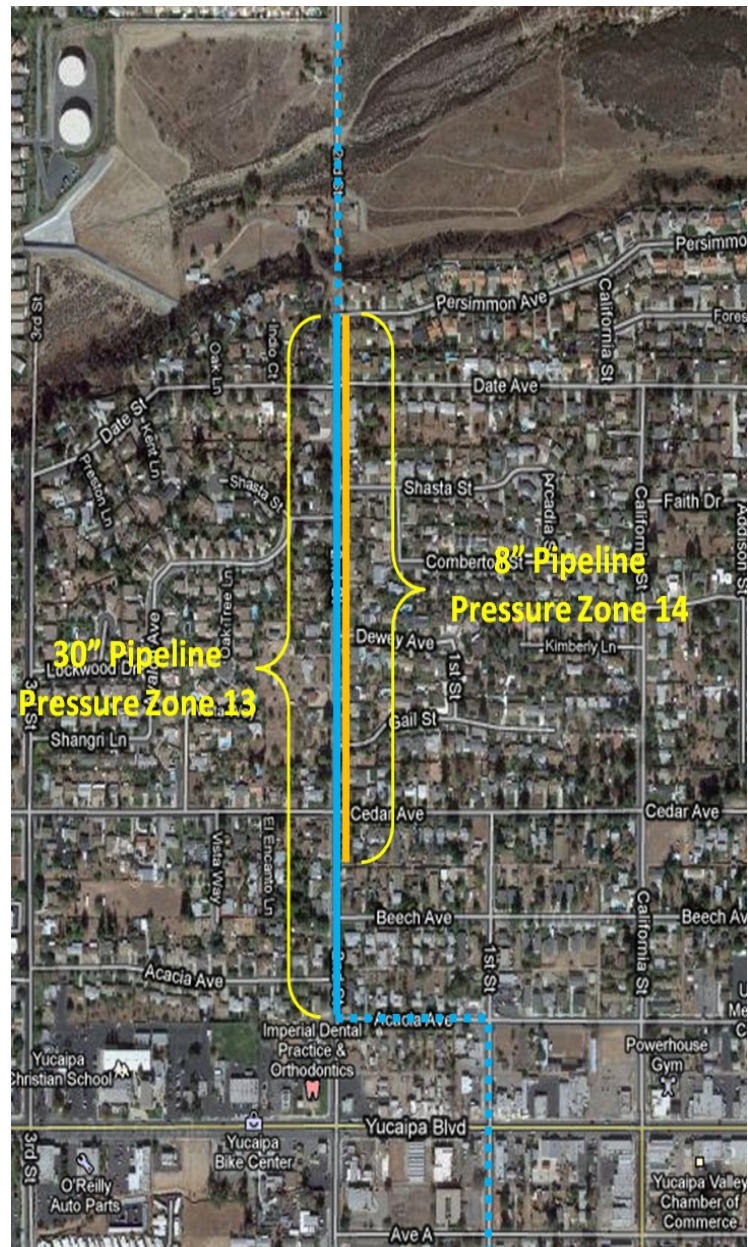
**Date:** July 26, 2011

**Subject:** Status Report on the Construction of Drinking Water Pipelines in Second Street, Yucaipa

The District staff has initiated the construction of two drinking water pipelines in Second Street. These pipelines include:

- Construction of about 2,000 feet of an 8" diameter ductile iron pipeline on Second Street from Persimmon Avenue to a point south of Cedar Avenue; and
- Construction of about 2,600 feet of a 30" diameter ductile iron conveyance pipeline on Second Street from Persimmon Avenue to Acacia Avenue.

An update on the status of the project will be provided to the board members and public at the workshop.









**Date:** July 26, 2011

**Subject:** Request to Purchase Emergency Radio Communication Equipment

---

The Yucaipa Valley Water District has entered into a mutual aid agreement with a number of local water agencies through the Emergency Response Network of the Inland Empire (ERNIE). ERNIE provides assistance to member agencies by communicating the needs of member agencies to each other during unusual events and emergencies.

During a local or large scale emergency or disaster conventional forms of communication such as hard wired telephone systems, cell phone based telephone systems, and the Internet may not be available. While some agencies have opted to utilize satellite communication devices, it seems more practical to use ham radio based communication systems during emergencies. The use of ham radio communication will allow all of the member agencies to communicate on specific frequencies and maintain vital communications under these specific conditions.

The District staff is requesting the purchase of an emergency radio communication system that will allow communication with the ERNIE member agencies using a GPS/APRS system in equipped vehicles. The system will consist of seven mobile systems mounted in District vehicles and one base station system located at the Crystal Creek facility for a sum not to exceed \$19,500. District employees will obtain the proper licensing certification prior to operating this system.



**Date: July 26, 2011**

**Subject: Property Tax Liens for Delinquent Sewer Utility Accounts**

---

The District staff has prepared lien documents for customer's delinquent in excess of 60 days for sewer related charges. The delinquent accounts have been processed through the District's collection procedures with limited response from the property owners.

District staff recommends placing a lien on the properties for the delinquent sewer charges plus penalties, county recording, collection fees, administrative cost and accrued interest. All property owners have been notified of the District's intent to lien the properties for the delinquent fees.

Any payments or demand for payment, received against the lien amount owing the District, will be released administratively.

## RESOLUTION NO. xx-2011

RESOLUTION OF THE BOARD OF DIRECTORS  
OF THE YUCAIPA VALLEY WATER DISTRICT  
ADDING DELINQUENT NON-PAID SEWER CHARGES TO ANNUAL TAXES LEVIED UPON  
THE PROPERTY FOR WHICH THE CHARGES ARE DELINQUENT IN SAN BERNARDINO  
COUNTY

WHEREAS, the Board of Directors of the Yucaipa Valley Water District has prepared a report and statement of those delinquent unpaid charges for sewer service within the District which were delinquent and unpaid for sixty (60) days or more on August 3, 2011; and

WHEREAS, the Board of Directors has decided that said delinquent and unpaid charges are to be included in the property tax levied on said property.

NOW THEREFORE, the Board of Directors of the Yucaipa Valley Water District does hereby resolve, determine and order as follows:

Section 1. That the report of the Yucaipa Valley Water District's delinquent and unpaid charges for sewer service within the District which remain unpaid and delinquent for sixty (60) days or more on August 3, 2011, is hereby adopted and approved by the Board.

Section 2. That the unpaid and delinquent charges listed in said report, for the parcel of property, are fixed at the amount listed in said report or released administratively upon payment.

Section 3. That the Secretary shall file with the County Auditor of the County of San Bernardino, and the Board of Supervisors of San Bernardino County, in the time and manner specified by the County Auditor and Board of Supervisors, a copy of such written report with a statement endorsed hereon over the signature of the Secretary that such a report has been finally adopted and approved by this Board of Directors and that the County Auditor shall enter the amount of such charges against the respective lot or parcel of land as it appears on the current assessment roll.

Section 4. That the County Tax Collector shall include the amount of charges on bills for taxes levied against the respective lot and parcel of land and, thereafter, the amount of such unpaid and delinquent charges shall be collected at the same time and in the same manner by the same person as, together with and not separately from the general taxes, if any, for the District or the County of San Bernardino and shall be delinquent at the same time and thereafter be subject to the same delinquency penalties.

Section 5. That any parcel collected through this method of collection remain on the Annual Property Tax Roll and charged the monthly sewer service charge annually.

4. This Resolution is effective immediately upon adoption.

PASSED AND ADOPTED this 3rd day of August 2011.

YUCAIPA VALLEY WATER DISTRICT

\_\_\_\_\_  
Jay Bogh, President Board of Directors

ATTEST:

\_\_\_\_\_  
Joseph B. Zoba, General Manager

STATE OF CALIFORNIA

COUNTY OF RIVERSIDE  
AND SAN BERNARDINO

I, Joseph B. Zoba, Secretary of the Board of Directors of the Yucaipa Valley Water District, California, do hereby certify that the foregoing resolution being Resolution No. xx-2011 was duly passed, approved and adopted by said Board, approved and signed by the President, and attested by the Secretary at the Regular Meeting held on the 3rd day of August 2011, and that the same was passed and adopted by the following vote:

AYES:

NOES:

ABSENT:

ABSTAIN:

Executed this 3rd day of August 2011 at Yucaipa, California.

\_\_\_\_\_  
Joseph B. Zoba, Secretary of the Yucaipa Valley Water District and of the Board of Directors

(Seal)

Request For Liens  
San Bernardino County  
August 3, 2011

<u>ACCOUNT</u>	<u>APN</u>	<u>ADDRESS</u>	<u>AMOUNT</u>
46-00017-01	30116463	32384 DUNLAP BLVD	1259.62
46-00021-00	30107207	31964 AVENUE E	204.00
46-00057-04	30112247	32037 AVENUE E	390.08
46-00074-01	30105131	12156 13TH ST	850.04
96-00125-04	31823513	13695-9 CALIMESA BLVD.	426.55
96-00126-01	124208223	13654 DOUGLAS ST	376.34
96-00222-02	31924281	13635 4TH ST	425.02
96-00259-01	31823515	34078 COUNTY LINE RD	7818.22
96-00348-01	31925218	13486 2ND ST	123.19
96-00379-01	124215201	13496 LANTANA AVE	165.89
96-00549-05	124206107	35362 AVENUE H	426.55
96-00896-03	124208210	35394 BONITA DR	426.55
96-00899-02	31826102	13387 ROBIN CT	122.92
96-00960-04	31947123	35271 SANTA ROSA	447.11
96-00969-02	31940108	13370 2ND ST	1018.13
96-01051-03	124214127	35693 SHELLEY ST	425.02
96-01068-01	31823131	34059 AVENUE I	426.55
96-01103-03	31823138	34054 AVENUE J	378.77
96-01114-01	31921149	34927 WILDWOOD CANYON RD	123.19
96-01456-03	31941105	35045 SAN CARLOS	353.54
96-01793-01	31918169	13269 5TH ST	161.41
96-01836-01	31920114	13200 3RD ST	470.80
96-02067-02	31823105	34071 AVENUE I	853.19
96-02084-03	31920212	34751 WILDWOOD CANYON RD	208.80
96-02180-03	31822222	33908 AVENUE I	230.25
96-02239-05	124222215	13498 HOLMES ST	425.02
96-02336-06	31921223	34912 AVENUE H	600.57
96-02454-05	31822108	13378 5TH PL	426.55
96-02458-02	31924242	13725 4TH ST	263.02
96-02506-04	124208123	35309 SANTA ROSA	217.83
96-02521-05	124215105	35532 PENROSE LN	425.02
96-02522-03	124215109	35535 PENROSE LN	426.55
96-02542-04	32289113	13470 LA PAZ CT	324.52
96-02549-02	124215124	13479 LA PAZ CT	426.55
96-02610-04	124207125	35388 SANTA MARIA ST	385.35
96-02755-01	31925347	34785 TARA LN	123.19
96-02819-02	124223115	35748 SANTA MARIA ST	425.02
96-02834-02	124223110	13515 BIG SKY CT	251.92
96-02912-04	124206116	35344 ROSS LN	208.80
96-02939-04	31920202	34739 WILDWOOD CANYON RD	282.59
96-03099-01	124224132	13642 HOLMES ST	387.93
96-03158-00	30110113	12329 13TH ST	1052.56
96-03166-00	31919140	34590 AVENUE G	494.96

**San Bernardino Lien Total**

**22,555.94**

## RESOLUTION NO. xx-2011

RESOLUTION OF THE BOARD OF DIRECTORS  
OF THE YUCAIPA VALLEY WATER DISTRICT  
ADDING DELINQUENT NON-PAID SEWER CHARGES TO ANNUAL TAXES LEVIED UPON  
THE PROPERTY FOR WHICH THE CHARGES ARE DELINQUENT IN RIVERSIDE COUNTY

WHEREAS, the Board of Directors of the Yucaipa Valley Water District has prepared a report and statement of those delinquent unpaid charges for sewer service within the District which were delinquent and unpaid for sixty (60) days or more on August 3, 2011; and

WHEREAS, the Board of Directors has decided that said delinquent and unpaid charges are to be included in the property tax levied on said property.

NOW THEREFORE, the Board of Directors of the Yucaipa Valley Water District does hereby resolve, determine and order as follows:

Section 1. That the report of the Yucaipa Valley Water District's delinquent and unpaid charges for sewer service within the District which remain unpaid and delinquent for sixty (60) days or more on August 3, 2011 is hereby adopted and approved by the Board.

Section 2. That the unpaid and delinquent charges listed in said report, for the parcel of property, are fixed at the amount listed in said report or released administratively upon payment.

Section 3. That the Secretary shall file with the County Auditor of the County of San Bernardino, and the Board of Supervisors of San Bernardino County, in the time and manner specified by the County Auditor and Board of Supervisors, a copy of such written report with a statement endorsed hereon over the signature of the Secretary that such a report has been finally adopted and approved by this Board of Directors and that the County Auditor shall enter the amount of such charges against the respective lot or parcel of land as it appears on the current assessment roll.

Section 4. That the County Tax Collector shall include the amount of charges on bills for taxes levied against the respective lot and parcel of land and, thereafter, the amount of such unpaid and delinquent charges shall be collected at the same time and in the same manner by the same person as, together with and not separately from the general taxes, if any, for the District or the County of San Bernardino and shall be delinquent at the same time and thereafter be subject to the same delinquency penalties.

Section 5. That any parcel collected through this method of collection remain on the Annual Property Tax Roll and charged the monthly sewer service charge annually.

4. This Resolution is effective immediately upon adoption.

PASSED AND ADOPTED this 3rd day of August 2011.

YUCAIPA VALLEY WATER DISTRICT

\_\_\_\_\_  
Jay Bogh, President Board of Directors

ATTEST:

\_\_\_\_\_  
Joseph B. Zoba, General Manager

STATE OF CALIFORNIA

COUNTY OF RIVERSIDE  
AND SAN BERNARDINO

I, Joseph B. Zoba, Secretary of the Board of Directors of the Yucaipa Valley Water District, California, do hereby certify that the foregoing resolution being Resolution No. xx-2011 was duly passed, approved and adopted by said Board, approved and signed by the President, and attested by the Secretary at the Regular Meeting held on the 3rd day of August 2011, and that the same was passed and adopted by the following vote:

AYES:

NOES:

ABSENT:

ABSTAIN:

Executed this 3rd day of August 2011 at Yucaipa, California.

\_\_\_\_\_  
Joseph B. Zoba, Secretary of the Yucaipa Valley Water District and of the Board of Directors

(Seal)

Request For Liens  
 Riverside County  
 August 3, 2011

<u>ACCOUNT</u>	<u>APN</u>	<u>ADDRESS</u>	<u>AMOUNT</u>
96-00053-03	409020012-0	273 E COUNTY LINE RD	123.19
96-00065-03	411251005-5	478 MYRTLEWOOD DR	475.07
96-00156-00	411100033-3	941 CALIMESA BLVD	431.03
96-00174-03	410020008-7	371 W COUNTY LINE RD	426.58
96-00261-01	410111010-9	141-145 E COUNTY LINE RD	242.11
96-00281-03	411100034-4	927 CALIMESA BLVD	1017.47
96-00308-01	411100003-6	915 CALIMESA BLVD	468.16
96-00391-02	410020007-6	367 W COUNTY LINE RD	489.02
96-00456-03	411070023-2	656 W AVENUE L	426.56
96-00516-00	411190002-4	1071 7TH ST	604.76
96-00640-02	411242015-6	1167 5TH ST	141.81
96-00665-04	411200002-4	749 W AVENUE L	675.06
96-00946-04	413081006-5	814 W COUNTY LINE RD	452.25
96-00973-05	411251006-6	468 MYRTLEWOOD DR	289.35
96-01092-05	410040016-6	951 3RD ST	425.02
96-01151-03	410151015-8	190 E AVENUE L	262.96
96-01300-02	410120009-7	161 FISHER CT	559.89
96-01338-03	409112008-1	246 LORETTA WAY	165.89
96-01418-01	409030004-4	927 DOUGLAS STREET	123.19
96-01445-01	409140002-2	227 E AVENUE L	402.74
96-01464-03	411160023-0	418 W AVENUE L	318.54
96-01543-04	409140013-2	1054 DOUGLAS ST	604.77
96-01623-01	410140013-2	148 W AVENUE L	338.82
96-01644-03	411100021-2	941 AVENUE B	850.04
96-01657-01	410030005-5	920 3RD ST	471.24
96-01662-03	410062024-1	1016 3RD ST	1428.70
96-01710-01	409030011-0	933 DOUGLAS ST	853.19
96-01810-02	410111016-5	934 STEARNS ST	123.18
96-01917-06	409140011-0	279 E AVENUE L	515.23
96-01947-01	409020029-6	940 DOUGLAS PL	208.79
96-02003-07	410140019-8	1046 CALIFORNIA	123.43
96-02063-01	411150009-7	934 4TH ST	515.23
96-02131-02	411160002-1	991 5TH ST	589.37
96-02178-01	411171011-3	461 W AVENUE L	302.27
96-02202-02	413082005-7	801 W COUNTY LINE RD	426.55
96-02508-10	409140029-7	241 GREEN TREE CIRCLE	217.08
96-02676-03	410020027-4	380 ROGERS CT	382.60
96-02877-03	410162017-4	1054 BARNES CT	604.77
96-02898-00	410162018-5	1058 BARNES CT	123.42
96-03125-00	411120025-8	1007 CALIMESA BLVD K	538.57
96-03131-00	410040051-7	205 EL SERENE LANE	147.01
96-03172-00	411200004-6	737 W AVENUE L	501.57
		<b>Riverside Lien Total</b>	<b>18,386.48</b>



**Date:** July 26, 2011

**Subject:** Request to Encroach on Yucaipa Valley Water District Sewer Easement at 11312 Fremont Street, Yucaipa

---

On June 21, 2011, the District received the attached letter from Frank and Elizabeth Watson of 11312 Fremont Street requesting permission to encroach the easterly 4 feet of the westerly 15 foot sewer easement for approximately 50 feet. The purpose of the encroachment will be to allow for the construction of a garage on the property.

Yucaipa Valley Engineering has prepared a legal description of the encroachment and sewer easement with all supporting documentation to be recorded with the County of San Bernardino.

District staff recommends allowance of this encroachment since District facilities will continue to be accessible and operational.



June 21, 2011

Yucaipa Valley Water District  
12770 second street  
Yucaipa, Ca. 92399

Re: 11312 Freemont Ave.

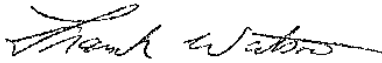
To Whom It May Concern:

Per the requirement of Yucaipa Valley Water District and the City of Yucaipa, to allow us to encroach on the sewer easement located at the above address, we request the following.

We, Frank and Elizabeth Watson, owners of the property located at 11312 Freemont Ave, hereby request Yucaipa Valley Water District to allow us to encroach upon the current sewer easement which is located at the west end of our property at 11312 Freemont, Yucaipa, Ca. The current easement is a 15' sewer easement running north and south across the length of our property. We would request that we be allowed to encroach 4' into the easterly portion of said easement beginning approximately 12' from the southern property line, going north approximately 12' and encroaching 4' from that point for a distance of approximately 50' in which to build our garage. We also understand that in the event that Yucaipa Valley Water District has to enter the property to replace, repair or otherwise, remove the sewer in the specified easement, that we will hold Yucaipa Valley Water District and its entities harmless from any damage that may occur to the new structure while working on the specified sewer line. We are preparing a new legal description of the encroachment and sewer easement with all supporting documentation to be filed with the County of San Bernardino prepared by Yucaipa Valley Engineering through the City of Yucaipa.

Sincerely,

Frank Watson



Elizabeth Watson



Cc: file

City of Yucaipa

FREE RECORDING

This instrument is for the benefit of Yucaipa Valley Water District, and is entitled to be recorded without fee. (Govt. Code 6103)

RECORDING REQUESTED BY AND WHEN RECORDED MAIL TO:

YUCAIPA VALLEY WATER DISTRICT
P.O. BOX 730
YUCAIPA, CA 92399

APN 321-131-17

GRANT OF ENCROACHMENT

YUCAIPA VALLEY WATER DISTRICT, OWNER OF A 15.00 FOOT WIDE SEWER EASEMENT OVER A PORTION OF PARCEL 1 OF PARCEL MAP NO. 11380 AS SHOWN BY MAP ON FILE IN BOOK 158 OF PARCEL MAPS AT PAGES 73 AND 74 THEREOF, RECORDS OF SAN BERNARDINO COUNTY, CALIFORNIA.

HEREBY GRANT TO

FRANK WATSON AND ELIZABETH WATSON, TRUSTEES OF THE FRANK WATSON AND ELIZABETH WATSON AB DISCLAIMER TRUST, THEIR SUCCESSORS AND ASSIGNS, THE RIGHT TO ENCROACH OVER THAT PORTION OF THE ABOVE DESCRIBED EASEMENT BEING MORE PARTICULARLY DESCRIBED AS FOLLOWS:

The easterly 4.00 feet of the westerly 15.00 feet of the northerly 50.00 feet of the southerly 62.00 feet of said PARCEL 1.

Said RIGHT OF ENCROACHMENT contains 200 square feet, more or less.

The RIGHT OF ENCROACHMENT described above shall be for the use and benefit of the Grantee for construction and maintenance of structures. Grantee acknowledges that the Yucaipa Valley Water District's rights shall be superior to the Grantee's and the Yucaipa Valley Water District shall not be liable for any damage caused to Grantee's structures within this ENCROACHMENT AREA.

Date

Secretary of the Board

STATE OF

COUNTY OF

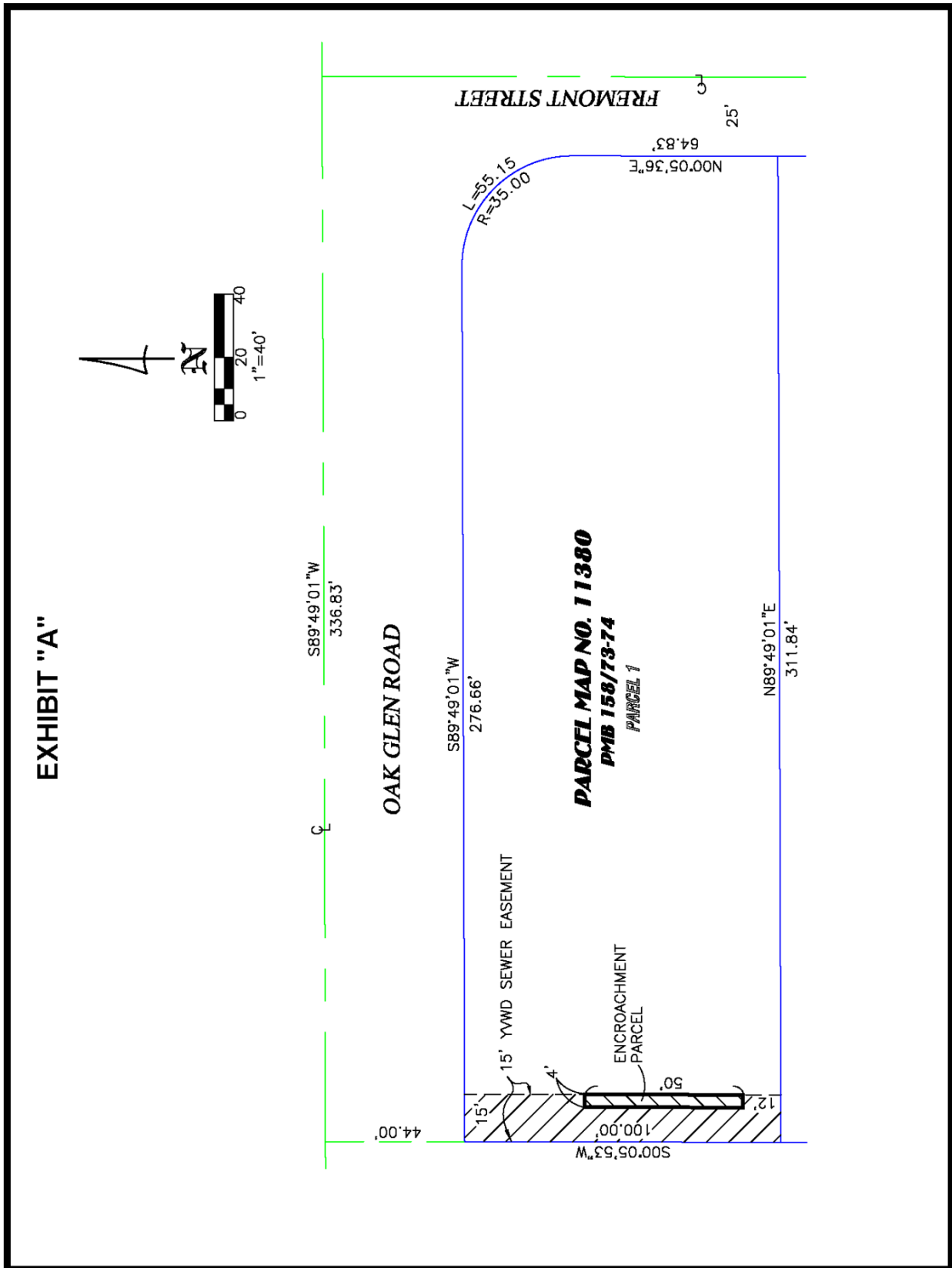
On 20, before me, personally appeared who proved to me on the basis of satisfactory evidence to be the person(s) whose name(s) is/are subscribed to the within instrument and acknowledged to me that he/she/they executed the same in his/her/their authorized capacity(ies), and that by his/her/their signature(s) on the instrument the person(s), or the entity upon behalf of which the person(s) acted, executed the instrument.

I certify under PENALTY OF PERJURY under the laws of the State of California that the foregoing paragraph is true and correct.

WITNESS my hand and official seal.

Signature of Notary

(Notary Seal)





**Date:** July 26, 2011

**Subject:** Claim for Damages Related to Sinkhole on Fifth Street, Yucaipa

---

On July 15, 2011, the District received a claim from MAC Adjustment as subrogate of AAA and Cecelia Gonzalez for damages in the amount of \$2,638.43 allegedly incurred when Ms. Gonzalez hit a sinkhole in Fifth Street in Yucaipa on May 11, 2011. The claim states that the damage occurred when Ms. Gonzalez drove over a hole that was not blocked off. Other than substantiation of the repair costs incurred, there was little information submitted as to the location of the incident, how the damage occurred, or how the Yucaipa Valley Water District was responsible for the hole and/or vehicle damage.

District staff recommends denial of the claim.



*original to  
David W...  
for m...  
11/11/11*

July 11, 2011

YUCAIPA VALLEY WATER DISTRICT  
PO BOX 458  
YUCAIPA, CA 92399

ADJ: PENDING

PHONE #: (714)797-5117, EXT.

FAX #: (000)000-0000

OUR CLIENT: INTERINSURANCE EXCHANGE OF THE AUTO CLUB  
YOUR CLAIM #: PENDING  
YOUR INSURED: CITY OF YUCAIPA WATER DISTRICT  
DATE OF LOSS: 05/11/11  
AMOUNT DUE: \$2,638.43  
OUR CLAIM #: 1106709411  
OUR INSURED: GONZALEZ

Dear Adjuster:

Enclosed are the supporting documents for the above captioned subrogation claim. If you have any questions or require any additional information, please contact my office.

Otherwise, please make your check payable to MAC ADJUSTMENT, INC. as subrogee of AAA / GONZALEZ and forward your draft to our office at P.O. Box 271648 Tampa, FL 33688 to bring this matter to a conclusion.

Sincerely,

JENNIFER MITTLER

Claims Department  
813-265-8600

*\* Tow bill has been requested*

P.O. BOX 271648 - 13902 N. DALE MABRY HWY - SUITE #125 - TAMPA, FLORIDA 33688  
813/265-8600 - 800/593-1200 - FAX 813/265-8615



# Yucaipa Valley Water District

12770 Second Street • P.O. Box 458 • Yucaipa, CA 92399 • (714) 797-5117

## CLAIM FOR DAMAGES TO PERSON OR PROPERTY

### INSTRUCTIONS

1. Claims for death, injury to person or to personal property must be filed not later than six months after the occurrence. (Gov. Code Sec. 911.2)
2. Claims for damages relating to any other cause of action must be filed not later than 1 year after the occurrence. (Gov. Code Sec. 911.2)
3. Read entire claim before filing.
4. See Page 2 for diagram upon which to locate place of accident.
5. This claim form must be signed on page 2 at bottom.
6. Attach separate sheets, if necessary, to give full details. SIGN EACH SHEET.
7. Claim must be filed with Board Secretary.

Name of Claimant

Cecilia Gonzalez

Home Address of Claimant

12350 5<sup>th</sup> St.

City and State

Yucaipa, CA

Home Telephone Number

760-404-8408

Business Telephone Number

n/a

Business Address of Claimant

n/a

City and State

Give address to which you desire notices or communications to be sent regarding this claim:

Mac Adjustment PO Box 271648 Tampa, FL 33688

When did DAMAGE or INJURY occur?

Date: 5-11-11  
Time: 5:00 pm

How did DAMAGE or INJURY occur? Give full particulars.

Insured drove over a sink/pot hole that was not blocked off.

Where did DAMAGE or INJURY occur? Describe fully, and locate on diagram on reverse side of this sheet. Where appropriate, give street names and addresses and measurements from landmarks:

5th Street in Yucaipa. Unknown which direction or cross street.

What particular ACT or OMISSION do you claim caused the injury or damage? Give names of District employees causing the injury or damage, if known:

*Since hole was not blocked off or repaired.*

What DAMAGE or INJURIES do you claim resulted? Give full extent of injuries or damages claimed:

*See attached photos and documentation.*

What AMOUNT do you claim on account of each item of injury or damage as of the date of presentation of this claim, giving basis of computation:

*See attached supports*

Give ESTIMATED AMOUNT as far as known, that you claim on account of each item of prospective injury or damage, giving basis of computation:

*\$2,638.43*

Name and address of Witnesses, Doctors and Hospitals

READ CAREFULLY

For all accident claims place on following diagram names of streets, including North, East, South, and West; indicate place of accident by "X" and by showing house numbers or distances to street corners. If District Vehicle was involved, designate by letter "A" location of District vehicle when you first saw it, and by "B" location of yourself or your vehicle when you first saw District vehicle; location of District vehicle at time of accident by "A-1" and location of yourself or your vehicle at the time of the accident by "B-1" and the point of impact by "X".  
NOTE: If diagrams below do not fit the situation, attach hereto a proper diagram signed by claimant.

FOR AUTOMOBILE ACCIDENTS			
Signature of Claimant or person filing on his behalf giving relationship to Claimant:		Typed Name	Date

NOTE: Presentation of a false claim is a felony (Cal. Pen. Code Sec. 72)  
CLAIMANT MUST BE REPLIED WITHIN BOARD APPROVAL

*Maggi Gasparini* → *MAGGI GASPARINI - MAC ADJUSTMENT*  
9-11-11

Claim: 010405482 ||| Pol: G2358492 | Form: PPA | Ins: CECILIA GONZALEZ || DoL: 05/11/2011 | St: Open | Adj: Jeannette Albright (Riverside ER4) | Claim: 010405482

**Financials (Total Incurred: \$2,638.43): Checks**

Check Number	Pay To	Net Amount	Issue Date	Scheduled Send Date	Status	Bulk Invoice
1369503	RAMON SANDOVAL & NATALIE SANDOVAL	\$1,932.07	05/18/2011	05/17/2011	Cleared	<none>
1381818	WYATT'S PAINT & BODY	\$440.00	05/26/2011	05/25/2011	Cleared	<none> <b>TOW</b>
50027825	ENTERPRISE RENT A CAR	\$266.36	05/26/2011	05/25/2011	Cleared	<none>

**Latest Notes**

06/14/2011	Jacki Brown 12:13 PM	Document Name: Intent_061411_14132728.doc Document Modified Date: 06/14/2011 12:13 PM Document Status: Final Distribution Status: Local Delivery Status: Complete
06/14/2011	Jacki Brown 12:08 PM	TOTAL DAMAGES TO RECOVER - TOTAL LOSS Collision:2418.12 Salvage:236.05 Towing Expense:440.00 Collision Total (50):2622.07 Deductible:250.00 Rental (40):266.36 Total Recovery: \$2638.43
06/14/2011	Jacki Brown 11:56 AM	SUBRO EVAL FOL:insd ran over a pothole Evidence:insd r/s Action Taken:sent to mac Intent Letter Sent.y Recovery Amount:2888.43 TOTAL DAMAGES TO RECOVER Collision (50) :2372.07 Deductible:250.00

User: Jacki Brown

Page 26

06/14/2011 12:15 PM

Valuation Details

Salvage Retained	Yes
Valuation Number	28934906v2
Valuation Amount	\$2,226.00
Salvage Bid	\$236.05
Sales Tax	\$174.12
Unused Registration	-
Title transfer fee	\$18.00
Deductible	\$250.00
SubTotal	\$1,932.07
Amount to Lien Holder	-
Other Adjustments	-
Other Deductions	-
Net	\$1,932.07

Appraisal Invoked?

NMVTIS Update

Comments

tax- 8.75%	

Copart Seller Access

Home	On Sale Now	Reports	Calendar	Title Processing	ProQuote
Assignment Entry	Bid Approval	Seller Profile	VB2 Sales	Firewall Issues	
Clear For Pickup	Sold Last 30 Days	Adjuster Maint.	Newsletter	Facilities	
Lot Display	Seller Snapshot	ProQuote/Specialty Values	Invoice Display	Account Maintenance	
Title Issues	Offsite Sales Issues	Title Direct Issues	Early Tow Questionnaire	HSMV Form 82089	
On the Block	Logout				

1994 VOLVO S50  
 YVHLS5716R2110520

**Repair:** \$2,643.49  
**ACV:** \$2,226.00      118.76%  
**Primary Damage:** ALL OVER  
**City, State:** DUNLAP ACRES, CA USA 92399  
**Zip Code:** 92399

ProQuote

Vehicles	Low Quote	High Quote	ProQuote
6	\$226.05	\$303.95	\$236.05 <input type="text" value="x"/>

[Home](#) | [On Sale Now](#) | [Reports](#) | [Calendar](#) | [Title Processing](#) | [Assignment Entry](#) | [Bid Approval](#) | [Seller Profile](#) | [VB2 Sales](#) | [Firewall Issues](#) | [Clear For Pickup](#) | [Sold Last 30 Days](#) | [Adjuster Maint.](#) | [Newsletter](#) | [Facilities](#) | [Lot Display](#) | [Seller Snapshot](#) | [ProQuote/Specialty Values](#) | [Invoice Display](#) | [Account Maintenance](#) | [Title Issues](#) | [Offsite Sales Issues](#) | [Title Direct Issues](#) | [Early Tow Questionnaire](#) | [HSMV Form 82089](#) | [On the Block](#) | [Logout](#)

Copyright © 1998-2011 Copart, Inc. - <http://www.copart.com>  
 Privacy Policy

Copart Access is a service for Registered Copart Sellers. Copart Access and the Copart Auction System (CAS) represent proprietary technologies protected by law. Misuse or abuse of any kind will result in membership revocation and possible criminal prosecution. Copart is not responsible for inaccuracies in data reported by CAS and the Copart Access system. The user assumes all risk of data loss and errors.



Rental Company: ENTERPRISE RENT-A-CAR  
 Invoice: 0112153-32NY

**Bill To:** AAA32DT  
 AAA AUTO CLUB ENTERPRISES  
 ATTN: PAUL ROMERO  
 16920 S FIGUEROA STREET  
 GARDENA, CA 90248

**RENTER INFORMATION:**  
 Renter: GONZALEZ, CECILIA

**RENTAL INFORMATION:**  
**Rental Branch Location:**  
 ENTERPRISE RENT-A-CAR(32NY)  
 33081 YUCAIPA BLVD  
 YUCAIPA, CA 92399-1950  
 (909) 797-4995

**ADDITIONAL CLAIM INFORMATION:**  
 Claim Number 010405482-R-0493  
 Claim Type: Insured  
 Vehicle Condition: Non-Driveable  
 Date Of Loss: 5/11/11  
 Insured Name: CECILIA GONZALEZ  
 Owner's Vehicle: 1994 VOLVO 850  
 Additional Driver:

**Repair Facility:**  
 TOTAL LOSS ASC  
 999, CA 99999-9999  
 (999) 999-9999

**VEHICLES RENTED:**

Effective Date and Time	Year	Make	Model	VIN	Starting Mileage	Ending Mileage	Mileage
5/12/11 8:55 AM	2010	HOND	CIVC	19XFA1F5XAE034827	30477	30566	89
5/13/11 8:55 AM	2011	NISN	ALTI	1N4AL2AP4BN456226	7395	8171	776

**RENTAL DETAIL:**

Rental Period: 5/12/11 to 5/23/11 (12 days)

**Billed Period: 5/12/11 to 5/20/11 (9 days)**

Product and Service	Rate	Amount
1 DAYS @	23.99	\$23.99
11 DAYS @	27.99	\$307.89
<b>Taxes and Surcharges</b>		
10 VLF	0.34	\$3.40
2 VLF	0.27	\$0.54
1 SALES TAX	8.75%	\$29.04
<b>Total Charges:</b>		\$364.26
<b>Less Amount Received:</b>		\$98.50
<b>Total Amount Due:</b>		<b>\$266.36</b>

# Rental Invoice

Please Return This Portion with Remittance

**Make Payment To:**  
 ENTERPRISE RENT-A-CAR  
 P.O. BOX 840086  
 KANSAS CITY, MO 64184-0086  
 Federal ID 43-0724835

**Total Charges:** \$364.86  
**Less Amount Received:** \$98.50  
**Total Amount Due.....** **\$266.36**

Please include on your check:  
 Invoice: D112153-32NY

Date: 05/13/2011 02:20 PM  
 Estimate ID: 010405482-I-0493  
 Estimate Version: 0  
 Committed  
 Profile ID: \* Mitchell

### Automobile Club of Southern California

3700 Central ave., Riverside, CA 92506  
 (951) 805-9129  
 Fax: (714) 708-9323  
 Email: jorrin.enoc@aaa-calif.com

Damage Assessed By: ENOC JORRIN

Appraised For: Jeannette Albright  
 (951) 637-8527

Condition Code: Fair  
 Date of Loss: 05/11/2011  
 Date Veh Avail: 05/13/2011  
 Deductible: 250.00  
 Policy No: G2358492

Type of Loss: Collision

Claim Number: 010405482-I-0493

Insured: CECILIA GONZALEZ  
 Owner: CECILIA GONZALEZ  
 Address: 12350 5TH ST, YUCAIPA, CA 92399  
 Telephone: Home Phone: (760) 404-8408

Contact Phone: (760) 404-8408

Mitchell Service: 911373

Description: 1994 Volvo 850 Turbo  
 Body Style: 4D Sed  
 VIN: YV1LS5716R2110520  
 Mileage: 131,143  
 OEM/ALT: A  
 Options: PASSENGER AIRBAG, DRIVER SIDE AIRBAG, POWER LOCK, POWER WINDOW, POWER STEERING REAR WINDOW DEFOGGER, CRUISE CONTROL, TILT STEERING COLUMN, LEATHER SEAT POWER PASSENGER SEAT, SUNROOF (POWER), PREMIUM SOUND SYSTEM ANTI-LOCK BRAKE SYS., ALUM/ALLOY WHEELS, AUTOMATIC TRANSMISSION, CASSETTE PLAYER AUTO AIR CONDITION, SIDE AIRBAGS

Vehicle Production Date: 9/93  
 Drive Train: 2.3L Turbo Inj 5 Cyl 4A  
 License: 5HFP078 CA  
 Search Code: ACSCNO

Line Item	Entry Number	Labor Type	Operation	Line Item Description	Part Type/ Part Number	Dollar Amount	Labor Units	CEG Unit
<u>Cooling</u>								
1	103240	BDY	REMOVE/INSTALL	Cooling Radiator	Existing		1.7 r	1.7
<u>A/C /Heater/Ventilation</u>								
2	103628	MCH	REMOVE/INSTALL	Air Cond Condenser -M	Existing		1.5 r	1.5
3		MCH	REMOVE/REPLACE	Evacuate & Recharge A/C -M			1.4	1.4
<u>Front Inner Structure</u>								
4	105410	MCH	REMOVE/REPLACE	Frame Susp Subframe -M	9142600-7	752.07	6.0	6.0T
<u>Front Suspension</u>								
5	106880	MCH	REMOVE/INSTALL	R Front Suspension One Side -M			1.0*	1.7
6	106890	MCH	REMOVE/INSTALL	L Front Suspension One Side -M			1.0*	1.7
<u>Engine/Trans Mounts</u>								
7	109540	BDY	REMOVE/REPLACE	Eng Supt Torque Rod	9141042-3	66.92	0.4	0.4T
<u>FRAME</u>								
8	931105	MCH	ADD'L LABOR OP	FOUR WHEEL ALIGNMENT	Sublet	85.00 *	0.0*	
<u>MANUAL ENTRIES</u>								
9	900500	MCH *	ADD'L LABOR OP	suspend motor and trans for sub frame	Existing		1.0*	
10	900500	MCH *	ADD'L LABOR OP	open trans/ pipes /trans pans	Sublet	INC	INC*	
<u>Intercooler</u>								
11	103486	MCH	REMOVE/REPLACE	Turbocharger Intercooler -M	9492730-8	441.46	0.9	0.9T

ESTIMATE RECALL NUMBER: 05/13/2011 14:20:03 010405482-I-0493  
 Mitchell Data Version: OEM: FEB\_11\_V UltraMate is a Trademark of Mitchell International  
 Copyright (C) 1994 - 2011 Mitchell International  
 UltraMate Version: 7.0.227 All Rights Reserved

Date: 05/13/2011 02:20 PM  
 Estimate ID: 010405482-1-0493  
 Estimate Version: 0  
 Committed  
 Profile ID: \* Mitchell

\* - Judgment Item  
 r - CEG R&R Time Used For This Labor Operation

Remarks

called b and d s/w mark no part available ref84322 9098233144

**Estimate Totals**

I. Labor Subtotals	Units	Rate	Add'l Labor Amount	Sublet Amount	Totals	II. Part Replacement Summary	Amount	
Body	2.1	46.00	0.00	0.00	96.60	Taxable Parts		1,260.45
Mechanical	12.8	85.00	0.00	85.00	1,173.00	Sales Tax @ 9.000%		113.44
Non-Taxable Labor					1,269.60	Total Replacement Parts Amount		1,373.89
Labor Summary	14.9				1,269.60			
III. Additional Costs						IV. Adjustments		
Total Additional Costs					0.00	Insurance Deductible		250.00-
						Customer Responsibility		250.00-
						I. Total Labor:		1,269.60
						II. Total Replacement Parts:		1,373.89
						III. Total Additional Costs:		0.00
						Gross Total:		2,643.49
						IV. Total Adjustments:		250.00-
						Net Total:		2,393.49

Point(s) of Impact

21 Undercarriage (S)

Insurance Co: AAA California

Inspection Site: wyatts  
 Address: 350 N RANCHO AVE  
 SAN BERNARDINO, CA 92410-1508  
 (909) 885-5051  
 Inspection Date: 05/13/2011

No supplements will be honored without prior approval

Thank you for allowing us to be of service. For more information about all of the products and services the Auto Club offers, please

ESTIMATE RECALL NUMBER: 05/13/2011 14:20:03 010405482-1-0493

Mitchell Data Version: OEM: FEB\_11\_V UltraMate is a Trademark of Mitchell International  
 Copyright (C) 1994 - 2011 Mitchell International

UltraMate Version: 7.0.227

All Rights Reserved

Date: 05/13/2011 02:20 PM  
Estimate ID: 010405482-I-0493  
Estimate Version: 0  
Committed  
Profile ID: \*Mitchell

call 1-877-428-2277, visit your local Auto Club office or visit our  
web site [www.aaa-calif.com](http://www.aaa-calif.com)

ESTIMATE RECALL NUMBER: 05/13/2011 14:20:03 010405482-I-0493  
Mitchell Data Version: OEM: FEB\_11\_V UltraMate is a Trademark of Mitchell International  
Copyright (C) 1994 - 2011 Mitchell International  
UltraMate Version: 7.0.227 All Rights Reserved

Page 3 of 3

Date: 05/13/2011 02:20 PM  
 Estimate ID: 010405482-I-0493  
 Estimate Version: 0  
 Committed  
 Profile ID: \* Mitchell

**Itemized Totals**

I. Labor Subtotals				II. Part Replacement Summary	
	Units	Rate	Sublet Amount	Totals	Amount
<b>Body</b>	2.1	46.00	0.00	96.60	
Remove/Replace	0.4	"	0.00	18.40	1,260.45
Remove/Install	1.7	"	0.00	78.20	1,260.45
<b>Mechanical</b>	12.8	85.00	85.00	1,173.00	
Remove/Replace	8.3	"	0.00	705.50	
Remove/Install	3.5	"	0.00	297.50	
Additional Labor	1.0	"	85.00	170.00	
<b>Non-Taxable Labor</b>				1,269.60	
<b>Labor Summary</b>	14.9			1,269.60	
III. Additional Costs				Amount	IV. Adjustments
Total Additional Costs				0.00	Insurance Deductible
					Customer Responsibility
					I. Total Labor:
					1,269.60
					ii. Total Replacement Parts:
					1,373.89
					III. Total Additional Costs:
					0.00
					Gross Total:
					2,643.49
					iv. Total Adjustments:
					250.00-
					Net Total:
					2,393.49

10/13/2011 02:20 PM

Automobile Club of Southern California  
 3700 Central ave , Riverside , CA 92506

REFINISH MATERIALS CALCULATION REPORT

GUZALEZ, CECILIA  
 (780) 404-8408

Order #: 189904  
 Vehicle: 1994 Volvo  
 Estimate ID: 010435482-I-0493  
 Repair Order: 0

Paint Code 1

	Units	\$/Per	Cost
<b>Refinishing</b>			
Paint Code 1 Time Less Overlap:	0.00		0.00
Paint Code 2 Time Less Overlap:	0.00		0.00
Blend 1 Time:	0.00		0.00
Blend 2 Time:	0.00		0.00
Buffing/Polishing:	0.00	0.00	0.00
Additional Refinishing Materials:			0.00
<b>Refinishing Materials Subtotal:</b>			<b>0.00</b>
<b>Bodywork</b>			
Metal Materials:	0.00	0.00	0.00
Fiberglass Materials:	0.00	0.00	0.00
Plastic 'Flex' Materials:	0.00	0.00	0.00
Additional Bodywork Materials:			0.00
<b>Body Materials Subtotal:</b>			<b>0.00</b>
Adjustment:		0.00	0.00
<b>GRAND TOTAL:</b>			<b>0.00</b>

Claim: 010405482-I-0493

Autosource Valuation: 1994 Volvo 850 STD Turbo 4D Sedan

AS Request: 26934900

**Audatex** **Autosource Valuation**

**Administrative Data** **1994 Volvo 850 STD Turbo 4D Sedan**

Paul Romero  
 Auto Club of Southern Calif  
 Gardena Branch  
 P.O. Box 639  
 Gardena CA 90248-3017

Claimant:  
 Insured: Gonzalez  
 Claim: 010405482-I-0493  
 Loss Date: 05/11/2011  
 Loss Type: Collision  
 Policy:  
 Other:

**VINSOURCE Analysis** **1994 Volvo 850 STD Turbo 4D Sedan**

VIN: YV1LS5716R2110520  
 Decodes as: 1994 Volvo 850 STD Turbo 4D Sedan  
 Accuracy: Decodes Correctly  
 History: Activity was reported

- o Autosource activity: (NONE).
- o Autotrak activity: (NONE).
- o Audatex/Estimating activity: (NONE)
- o Sales history activity: (NONE)

**NICB Report** **1994 Volvo 850 STD Turbo 4D Sedan**

NICB/ISO Member	I012 INTERINS EXCHANGE OF THE AUTO CLUB OF SOUTHERN CA	
Claim	G 508435998080701050	Loss Date: 08/07/98
Type of Loss	ESTIMATE	Phone:
Point of Impact	Front Center	
NICB/ISO Member	I012 INTERINS EXCHANGE OF THE AUTO CLUB OF SOUTHERN CA	
Claim	G 508435901053001050	Loss Date: 05/30/01
Type of Loss	ESTIMATE	Phone:
Point of Impact	Right Rear Side	
NICB/ISO Member	I012 INTERINS EXCHANGE OF THE AUTO CLUB OF SOUTHERN CA	
Claim	010405482-I-0493	Loss Date: 05/11/11
Type of Loss	ESTIMATE	Phone:
Point of Impact	Left And Right	

**Vehicle Salvage Title Summary** **1994 Volvo 850 STD Turbo 4D Sedan**

Event Date	Event Location	Odometer Reading	Event Detail
01/26/06	BLOOMINGTON, CA		Salvage
06/25/04	SAN BERNARDINO, CA		Salvage

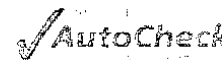
Claim: 610405432-1-0493

Autosource Valuation: 1994 Volvo 850 STD Turbo 4D Sedan

AS Request: 24934916

Event Date	Event Location	Odometer Reading	Event Detail
06/15/04	SAN BERNARDINO, CA		Salvage

Processed on 05/13/11 1:57 PM. Title History is powered by Experian AutoCheck. The Experian data contained in this report involves the conveyance of information provided to Experian by other sources. Accordingly, neither Experian nor Audatex can, or will, be an insurer or guarantor of the accuracy or reliability of the Experian data.



**Recall Bulletins** 1994 Volvo 850 STD Turbo 4D Sedan

Natl Highway Traffic Safety Admin (US) has issued a total of 2 recall bulletins that may apply to this vehicle.

<b>NHTSA ID Number</b>	94V173000
<b>Date Issued</b>	09/08/94
<b>Quantity Affected</b>	14,000
<b>Manufacturing Dates</b>	August 1993 - July 1994
<b>System</b>	Fuel: throttle linkages and control.
<b>Vehicle Description</b>	Passenger cars: sedans and station wagons
<b>Description Of Defect</b>	Under very cold weather conditions, ice crystals can form at the throttle in the engine intake system and prevent the throttle from returning to idle.
<b>Consequence Of Defect</b>	This condition can cause loss of speed control and can result in unwanted acceleration and a possible accident.
<b>Corrective Action</b>	Dealers will replace the throttle body, throttle cable, charge air cooler piping and crankcase ventilation hoses.

<b>NHTSA ID Number</b>	04V368000
<b>Date Issued</b>	07/23/04
<b>Quantity Affected</b>	226,000
<b>Defect</b>	On certain passenger vehicles, after prolonged exposure to heat, the fuel tank may seep or leak fuel at the points where the heat shield is attached. Fuel leakage, in the presence of an ignition source, could result in a fire.
<b>Remedy</b>	Volvo will inspect the fuel tank and replace it if any evidence of fuel seepage or leakage is found. All vehicles will receive new reinforcement bushings at the heat shield attachment points to prevent future leaks. This recall will be conducted as a safety recall in the hot weather states of: Alabama, Arkansas, Arizona, California, Florida, Georgia, Hawaii, Louisiana, Mississippi, Nevada, New Mexico, North Carolina, Oklahoma, South Carolina, Tennessee, Texas, and Utah, and as a service recall in the other 33 states and the District of Columbia. The recall began on September 24, 2004.

**Valuation Summary** 1994 Volvo 850 STD Turbo 4D Sedan

	Typical Vehicle	Loss Vehicle	Adjustment
Price	\$2,740		\$2,740
Engine	5 Cylinder Turbo 2.3 Engine	5 Cylinder Turbo 2.3 Engine	
Transmission	4 Speed Automatic	4 Speed Automatic	
Odometer	176,818 Mi(Typical)	131,143 Mi(Actual)	345
Equipment/Package Adjustment (See Valuation Detail)			0
Autosource Value Before Condition Adjustments			3,085
Total Condition Adjustments (See Condition Adjustment Detail)			95
Branded Title (See Valuation Notes)			-954
<b>Total Condition Adjusted Market Value</b>			<b>\$2,226</b>
General Sales Tax		%	
Title Fee			

**Warning**

Claim: 0104054824-0493

Autosource Valuation: 1994 Volvo 850 STD Turbo 4D Sedan

AS Request: 28934906

The market value displayed may not reflect the activity detected by VINSOURCE and/or NICB research.

Transfer Fee	
Deductible	
Net Adjusted Value	
Salvage/Other	-

**Vehicle Valuation Detail** **1994 Volvo 850 STD Turbo 4D Sedan**

	Typical Vehicle	Loss Vehicle	Adjustment
City/State	San Bernardino, CA	San Bernardino, CA	
Price	\$2,740		\$2,740
<b>Description</b>			
Year	1994	1994	
Make	Volvo	Volvo	
Model	850	850	
Edition	STD	STD	
Door	4D	4D	
Body	Sedan	Sedan	
Drive	2WD	2WD	
Engine	5 Cylinder Turbo 2.3 Engine	5 Cylinder Turbo 2.3 Engine	0
Transmission	4 Speed Automatic	4 Speed Automatic	0
Color	Not Applicable	Not Specified	
Odometer	176,818 Mi(Typical)	131,143 Mi(Actual)	345
<b>Equipment</b>			
<b>Convenience Options</b>			
	Air Conditioning	Air Conditioning	
	Tilt Steering Wheel	Tilt Steering Wheel	
	Power Antenna	Power Antenna	
	Telescopic Steering Whl	Telescopic Steering Whl	
	Climate Control For A/C	Climate Control For A/C	
	Cruise Control	Cruise Control	
	Rear Window Defroster	Rear Window Defroster	
<b>Other Optional Equipment</b>			
	Tinted Glass	Tinted Glass	
	Digital Clock	Digital Clock	
	Fog Lights	Fog Lights	
	Keyless Entry System	Keyless Entry System	
	Intermittent Wipers	Intermittent Wipers	
	Leather Steering Wheel	Leather Steering Wheel	
	Dual Airbags	Dual Airbags	
	Anti-lock Brakes	Anti-lock Brakes	
	Trip Computer	Trip Computer	
<b>Power Accessories</b>			
	Heated Power Mirrors	Heated Power Mirrors	
	Power Windows	Power Windows	
	Power Drivers Seat	Power Drivers Seat	
	Power Steering	Power Steering	
	Power Door Locks	Power Door Locks	
	Power Brakes	Power Brakes	
<b>Radio/Phone/Alarm Options</b>			
	AM/FM Stereo Tape	AM/FM Stereo Tape	

Claim: 010405482-I-0493

Autosource Valuation 1994 Volvo 850 STD Turbo 4D Sedan

AS Request 28934906

	Typical Vehicle	Loss Vehicle	Adjustment
	Alarm System	Alarm System	
Roof Options	Power Sunroof	Power Sunroof	
Seat Options	Split Folding Rear Seat	Split Folding Rear Seat	
	Leather Seats	Leather Seats	
	Heated Front Seats	Heated Front Seats	
Wheel Options	Aluminum/Alloy Wheels	Aluminum/Alloy Wheels	
Autosource Value Before Condition Adjustments			3,085
Total Condition Adjustments (See Condition Adjustment Detail)			95
<b>Prior Branded Title - Prior damage impact not noticeable</b>			<b>-954</b>
<b>Total Condition Adjusted Market Value</b>			<b>\$2,226</b>

**Valuation Notes** **1994 Volvo 850 STD Turbo 4D Sedan**

- o **Adjustments of Special Note**
  - A mileage adjustment of 0.75 cents per mile/kilometer has been applied. This adjustment is based on the vehicle year, vehicle category and market area. Mileage adjustments are capped at 40% of the vehicle's starting value.
  - No special adjustments were made for this vehicle.
- o **Information provided by Auto Club of Southern Calif.**
  - Loss vehicle description was provided by Auto Club of Southern Calif.
  - All values are in U.S. dollars.
  - The loss vehicle has a **Branded Title** that was reported to be **Prior damage impact not noticeable**.
- o **Autosource Valuation Process**
  - Over 3,800,000 vehicles are entered weekly into the database used for researching this value. This database includes dealer inspected, dealer inventory, dealer advertised, phone verified and advertised private party vehicles.
  - The originating search area for this valuation was San Bernardino, California.
- o **Correction Notes**
  - **Version 2**
    - On 05/17/11 changes to this request were completed as requested by Paul Romero on behalf of Auto Club of Southern Calif.. These changes are detailed below.
    - **Other:** changed Salvage Type from No Branded Title to Not Noticeable.

**Condition Adjustment detail** **1994 Volvo 850 STD Turbo 4D Sedan**

	Typical Vehicle	Loss Vehicle	Adjustment
<b>INTERIOR</b>			
Seats	Moderate Wear	Moderate Wear	
Carpets	Moderate Wear	Moderate Wear	
Int Trim	Moderate Damage	Minor Damage	20
Glass	Good	Good	
Headliner	Good	Good	
<b>EXTERIOR</b>			
Body	Moderate Damage	Moderate Damage	
Paint	Moderate Damage	Minor Wear	75
Ext Trim	Moderate Damage	Moderate Damage	
<b>MECHANICAL</b>			
Engine	Minor Work	Minor Work	
Transmission	Minor Work	Minor Work	
<b>TIRES</b>			
Front Tires	Good	Good	
Rear Tires	Good	Good	

Claim: C10465482-I-0493

Autosource Valuation: 1994 Volvo 850 STD Turbo 4D Sedan

AS Request: 28934906

Typical Vehicle	Loss Vehicle	Adjustment
	Total Condition Adjustments	\$95
	Prior Damage	\$0
	Condition Adjustment	\$95
	Net Condition Adjustment	\$95

**1994 Volvo 850 STD Turbo 4D Sedan**

The following is a listing of the comparable vehicles used to calculate the fair market value of the total loss vehicle. Autosource inputs nationally over 3,800,000 vehicle records into the database weekly. The database contains inspected dealer inventories, dealer advertised, phone verified and private party advertisements from more than 10,000 sources including automotive publications, newspapers and Web sites. Both dealer and private party vehicles are indicated under type. Autosource requires a minimum sample size of comparable vehicles in order to provide a statistically valid value. Autosource will locate comparable vehicles identical to the same year, make and model of the total loss vehicle within the local market area, then expands as necessary to validate the vehicle's local market value.

The local market search originated from Zip Code 92410, as determined by the vehicle owner's principally garaged area. Due to vehicle availability, Autosource searched the nation to obtain a valid sample size. Autosource was able to locate 30, 1994 Volvo 850 vehicles. The price listed for the vehicles is the asking price. The selling price may be substantially less. The sold price if verified, will be indicated in the price column with (S). Adjustments have been made between the loss vehicle and comparables listed below for unadvertised attributes and differences in edition, doors and body style as indicated under Veh Adj. The sum of the 30 comparable vehicles is \$82,195 for an average price of \$2,740.

Further adjustments have been made to the typical vehicle price, taking into consideration the total loss vehicle's mileage, equipment and condition. All adjustments are vehicle specific and reflect local driving habits and market conditions. Autosource's typical mileage is based on a minimum of 250 vehicles, establishing the expected miles driven specific to the state, vehicle year and category of vehicle. Autosource considers standard, optional, dealer installed and aftermarket equipment, taking into consideration more than 700 equipment items, research is updated monthly to ensure accuracy. Autosource vehicle condition is specific to the state, vehicle year and category of vehicle. Autosource condition adjustments are designed to reflect the impact that the pre-loss condition has on the vehicle's fair market value.

Taking into consideration all of the loss vehicle specifics, the fair market value is \$2,226 as listed under the Total Condition Adjusted Market Value on the valuation detail page.

1

Vehicle:	1994 Volvo 850 STD Turbo 2WD 4D Sedan	Phone:	(909)627-1211
City:	Chino	State:	CA
Date:	03/06/11	Distance:	24mi
VIN:	YV1LS571XR2146498	Stock:	A246498
Seller:	King Auto Sales	Odometer:	138,397
Source:	*Leading Internet Auto Site		
Details:	5 Cylinder Turbo 2.3 Engine, Automatic Transmission, Air Conditioning, Dual Airbags, Alarm System, Power Antenna, Anti-lock Brakes, Climate Control For A/C, Cruise Control, Digital Clock, Rear Window Defroster, Fog Lights, Heated Front Seats, Intermittent Wipers, Keyless Entry System, Heated Power Mirrors, Power Brakes, Power Door Locks, Power Steering, Power Windows, Power Drivers Seat, AM/FM Stereo Tape, Split Folding Rear Seat, Leather Seats, Power Sunroof, Leather Steering Wheel, Trip Computer, Telescopic Steering Whl, Tinted Glass, Tilt Steering Wheel, Aluminum/Alloy Wheels, Overdrive		

2

Vehicle:	1994 Volvo 850 STD Turbo 2WD 4D	Phone:	(760)898-0969
City:	Palm Springs	State:	CA
Date:	03/28/11	Distance:	47mi
VIN:		Stock:	
Seller:	Private	Odometer:	
Source:	craigslist-California		
Details:	5 Cylinder Turbo 2.3 Engine, Air Conditioning, Dual Airbags, Alarm System, Power Antenna, Anti-lock Brakes, Climate Control For A/C, Cruise Control, Digital Clock, Rear Window Defroster, Fog Lights, Heated Front Seats, Intermittent Wipers, Keyless Entry System, Heated Power Mirrors, Power Brakes, Power Door Locks, Power Steering, Power Windows, Power Drivers Seat, AM/FM Stereo Tape, Split Folding Rear Seat, Leather Seats, Power		

Claim 010105182 0493

Approved Vehicle 1994 Volvo 850 STD Turbo 4D Sedan

AR Request 23924906

**3** Sunroof, Leather Steering Wheel, Trip Computer, Telescopic Steering Whl, Tinted Glass, Tilt Steering Wheel, Aluminum/Alloy Wheels, Well Equiped, All Leather Interior

Vehicle 1994 Volvo 850 STD Turbo 2WD 4D Phone (213)359-4830  
 City Los Angeles State CA Price \$2,800  
 Date 04/04/11 Distance 55mi Veh Adj \$0  
 VIN Stock Adj Price \$2,800  
 Seller Private Odometer 166,000

Source craigslist-Los Angeles

Details 5 Cylinder Turbo 2.3 Engine, Automatic Transmission, Air Conditioning, Dual Airbags, Alarm System, Power Antenna, Anti-lock Brakes, Climate Control For A/C, Cruise Control, Digital Clock, Rear Window Defroster, Fog Lights, Heated Front Seats, Intermittent Wipers, Keyless Entry System, Heated Power Mirrors, Power Brakes, Power Door Locks, Power Steering, Power Windows, Power Drivers Seat, AM/FM Stereo Tape, Split Folding Rear Seat, Leather Seats, Power Sunroof, Leather Steering Wheel, Trip Computer, Telescopic Steering Whl, Tinted Glass, Tilt Steering Wheel, Aluminum/Alloy Wheels, Will Accept Best Offer

**4**

Vehicle 1994 Volvo 850 STD Turbo 2WD 4D Phone (424)249-2202  
 City Beverly Hills State CA Price \$2,900  
 Date 05/05/11 Distance 63mi Veh Adj \$0  
 VIN Stock Adj Price \$2,900  
 Seller Private Odometer

Source craigslist-Los Angeles

Details 5 Cylinder Turbo 2.3 Engine, Air Conditioning, Dual Airbags, Alarm System, Power Antenna, Anti-lock Brakes, Climate Control For A/C, Cruise Control, Digital Clock, Rear Window Defroster, Fog Lights, Heated Front Seats, Intermittent Wipers, Keyless Entry System, Heated Power Mirrors, Power Brakes, Power Door Locks, Power Steering, Power Windows, Power Drivers Seat, AM/FM Stereo Tape, Split Folding Rear Seat, Leather Seats, Power Sunroof, Leather Steering Wheel, Trip Computer, Telescopic Steering Whl, Tinted Glass, Tilt Steering Wheel, Aluminum/Alloy Wheels, Good Condition

**5**

Vehicle 1994 Volvo 850 STD Turbo 2WD 4D Phone (310)849-6462  
 City Beverly Hills State CA Price \$3,250  
 Date 02/15/11 Distance 63mi Veh Adj \$0  
 VIN Stock Adj Price \$3,250  
 Seller Private Odometer 83,000

Source craigslist-Los Angeles

Details 5 Cylinder Turbo 2.3 Engine, Automatic Transmission, Air Conditioning, Dual Airbags, Alarm System, Power Antenna, Anti-lock Brakes, Climate Control For A/C, Cruise Control, Digital Clock, Rear Window Defroster, Fog Lights, Heated Front Seats, Intermittent Wipers, Keyless Entry System, Heated Power Mirrors, Power Brakes, Power Door Locks, Power Steering, Power Windows, Power Drivers Seat, AM/FM Stereo Tape, Split Folding Rear Seat, Leather Seats, Power Sunroof, Leather Steering Wheel, Trip Computer, Telescopic Steering Whl, Tinted Glass, Tilt Steering Wheel, Aluminum/Alloy Wheels, Will Accept Best Offer

**6**

Vehicle 1994 Volvo 850 STD Turbo 2WD 4D Sedan Phone (408)396-7600  
 City San Jose State CA Price \$3,488  
 Date 05/11/11 Distance 340mi Veh Adj \$0  
 VIN YV1LS5711R2185960 Stock Adj Price \$3,488  
 Seller Pearls Auto Superstore Odometer 122,859

Source CarsOnlineFree.com

Details 5 Cylinder Turbo 2.3 Engine, Automatic Transmission, Air Conditioning, Dual Airbags, Alarm System, Power Antenna, Anti-lock Brakes, Climate Control For A/C, Cruise Control, Digital Clock, Rear Window Defroster, Fog Lights, Heated Front Seats, Intermittent Wipers, Keyless Entry System, Heated Power Mirrors, Power Brakes, Power Door Locks, Power Steering, Power Windows, Power Drivers Seat, AM/FM Stereo Tape, Split Folding Rear Seat, Leather Seats, Power Sunroof, Leather Steering Wheel, Trip Computer, Telescopic Steering Whl, Tinted Glass, Tilt Steering Wheel, Aluminum/Alloy Wheels

UBIR: 01200624 (RM)

AUTOSOURCE VEHICLE LOSS 7.7.05 (REV. 07/05) (01/05)

Original Equipment Guide		1994 Volvo 850 STD Turbo 4D Sedan	
<b>Engine Options</b>		<b>Transmission Options</b>	
* 5 Cylinder Turbo 2.3 Engine	STD	5 Speed Manual	\$0
		* 4 Speed Automatic	STD
<b>Other Optional Equipment</b>		<b>Convenience Options</b>	
* Anti-lock Brakes	STD	* Climate Control For A/C	STD
Auto Load Leveling	\$400	* Air Conditioning	STD
* Digital Clock	STD	* Power Antenna	STD
* Dual Airbags	STD	* Cruise Control	STD
* Fog Lights	STD	* Rear Window Defroster	STD
Headlight Washers		* Telescopic Steering Whl	STD
* Intermittent Wipers	STD	* Tilt Steering Wheel	STD
* Keyless Entry System	STD	<b>Power Accessories</b>	
* Leather Steering Wheel	STD	* Heated Power Mirrors	STD
Metallic Paint		* Power Drivers Seat	STD
Rear Spoiler	\$325	* Power Brakes	STD
Sport Suspension	\$150	* Power Door Locks	STD
* Trip Computer	STD	Power Passenger Seat	\$495
Traction Control System	\$385	* Power Steering	STD
* Tinted Glass	STD	* Power Windows	STD
Wood Interior Trim	\$600	<b>Seat Options</b>	
<b>Radio/Phone/Alarm Options</b>		* Heated Front Seats	STD
* Alarm System	STD	* Leather Seats	STD
* AM/FM Stereo Tape	STD	* Split Folding Rear Seat	STD
<b>Wheel Options</b>		<b>Roof Options</b>	
* Aluminum/Alloy Wheels	STD	* Power Sunroof	STD
Spoke Wheels	\$300		
<b>Option Packages</b>			
Nordic Package	\$450	Includes Headlight Wipers/Washers; Outside Temperature Gauge.	
Base retail price:			\$30,895
<b>Loss Vehicle manufacturer's suggested retail price as reported</b>			<b>\$30,895</b>

Editions available for the same body style (in order of original cost, increasing): \*STD

\* Indicates loss vehicle equipment.

**California Regulatory Statement** 1994 Volvo 850 STD Turbo 4D Sedan

For your protection California law requires the following to appear on this form: Any person who knowingly presents false or fraudulent claim for the payment of a loss is guilty of a crime and may be subject to fines and confinement in state prison. False representations made on a signed auto theft claim form subject the insured to a penalty of perjury.

**Vehicle Locator Service** 1994 Volvo 850 STD Turbo 4D Sedan

After your claim is settled, Autosource provides free assistance in locating your next vehicle. Your request can be submitted online 24hrs. per day at <https://autosource.audatex.us>. Under Additional Services click the Autosource Vehicle Locator Service Form link to complete the VLS form. Or you can call us Monday through Friday, between 8:00 AM and 5:00 PM, Pacific time at (800)351-3133, ext 7428. Our specialists will work with you to find a new or used vehicle in your area.

Claim 010405482-I-0493

Autosource Valuation: 1994 Volvo 850 STD Turbo 4D Sedan

AS Request: 28934906

**About Your Valuation****1994 Volvo 850 STD Turbo 4D Sedan**

This report contains proprietary information of Audatex and shall not be disclosed to any third party (other than the insured or claimant) without Audatex's prior written consent. If you are the insured or claimant and have questions regarding the description of your vehicle, please contact the insurance company that is handling your claim. Information within VINsource/NICB is provided solely to identify potential duplicative claims activity. User agrees to use such information solely for lawful purposes.

Tax rates contained herein are based on general sales tax data provided by Vertex Inc. Excise, use, registration, licensing and other taxes and fees that may be applicable are not included. Audatex makes no representations or warranties concerning the applicability or accuracy of such tax data.

Report Generated by Audatex, a Solera Company

© 2011 Audatex North America, Inc. All Rights Reserved.



Help | Close

View: Review

Status: Not Reviewed

Save & Close

Request Supplement

Cancel

Print

Email

This folder is not assigned to a desk reviewer

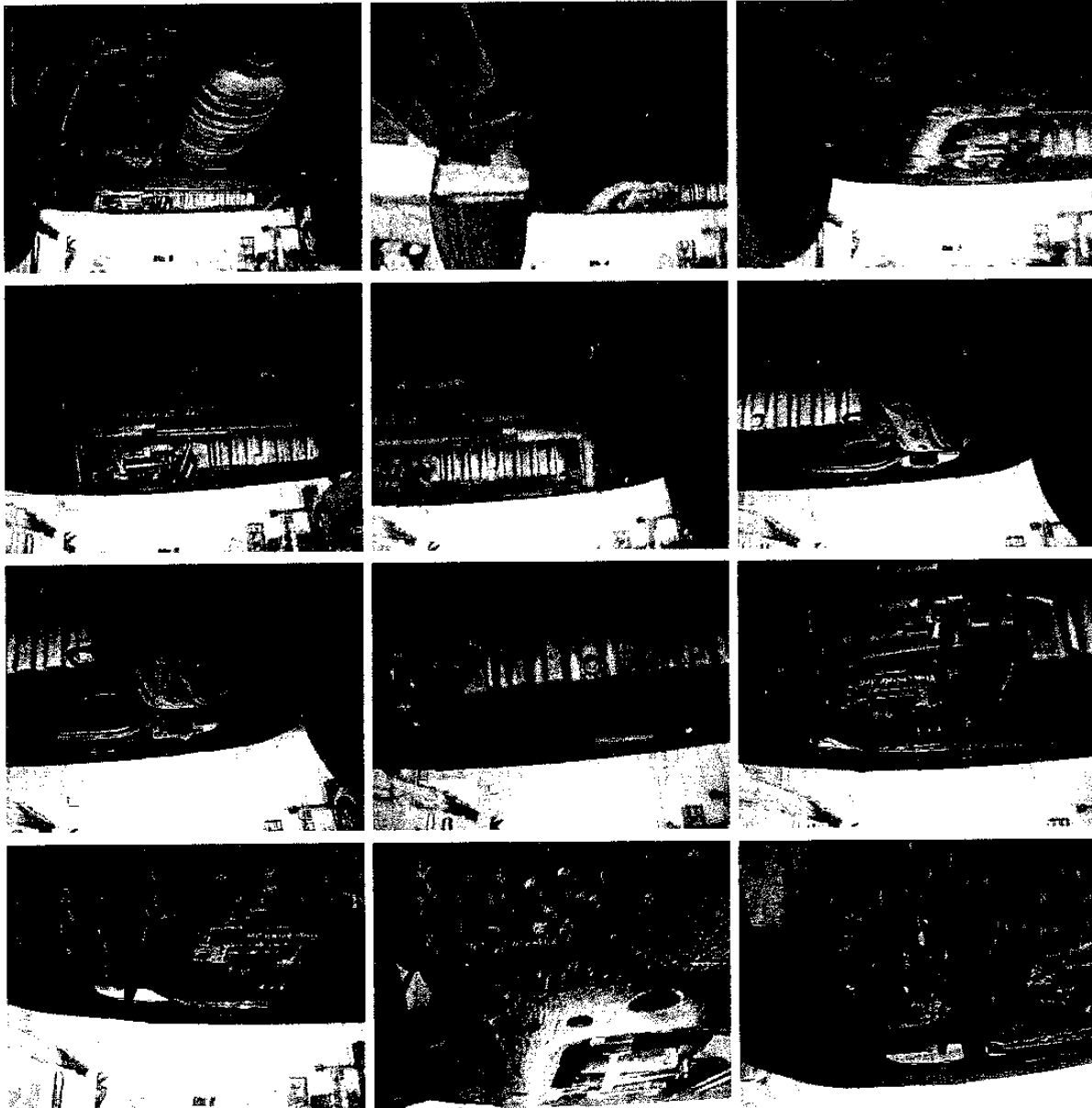
Admin Vehicle Estimate Images Activity Log Attachments Journal

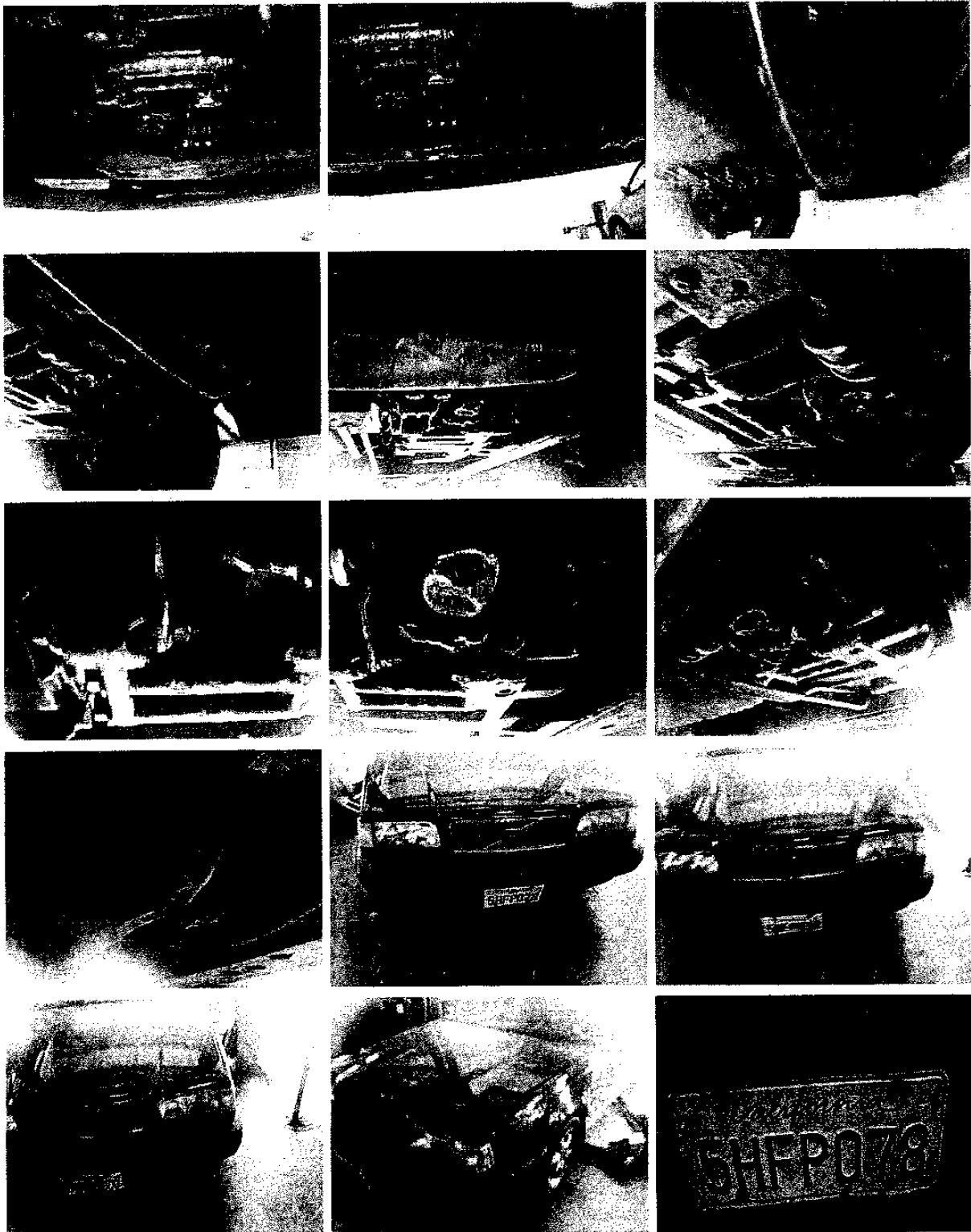
Print Options:

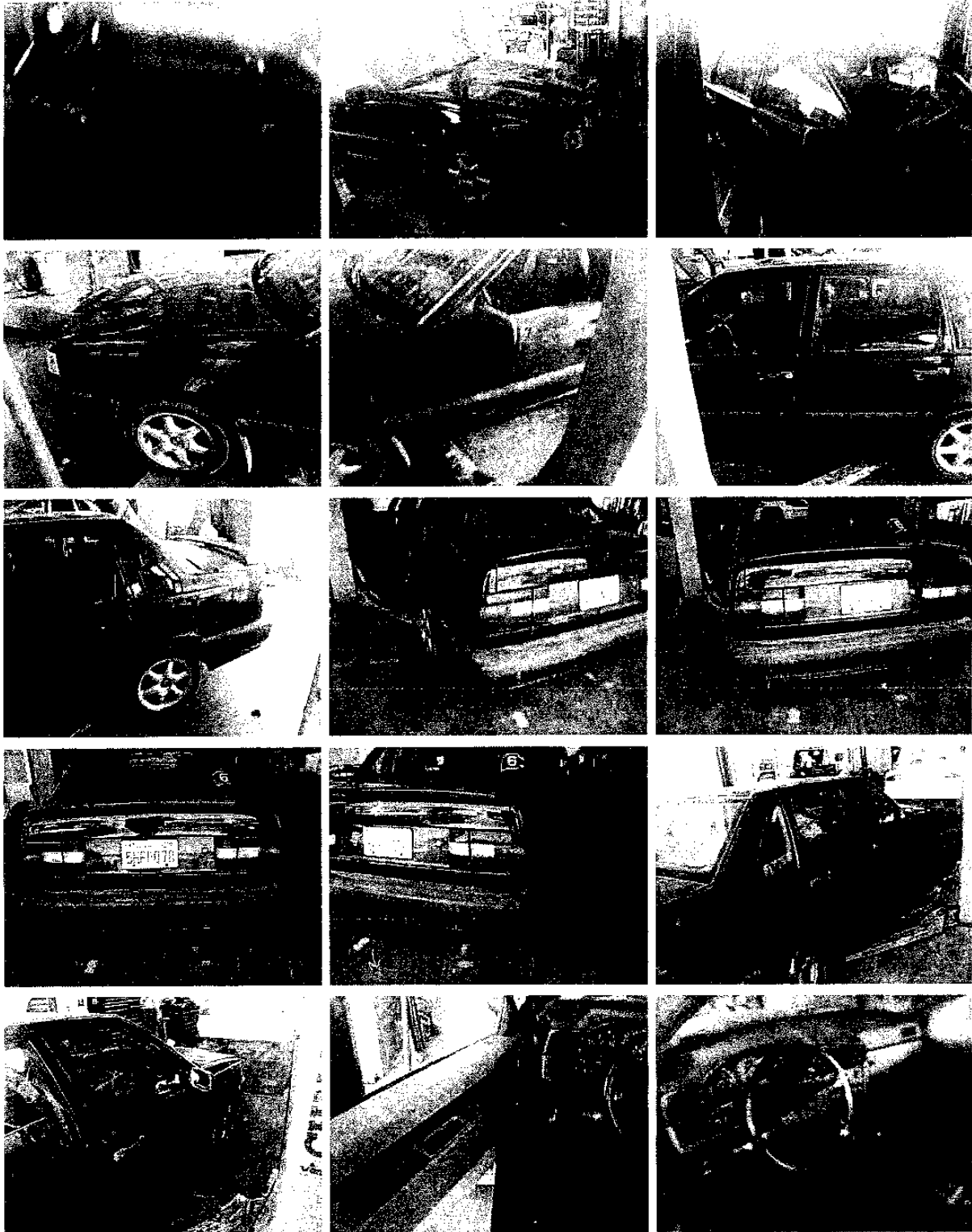
1 image(s) per page

Print Description and Comments

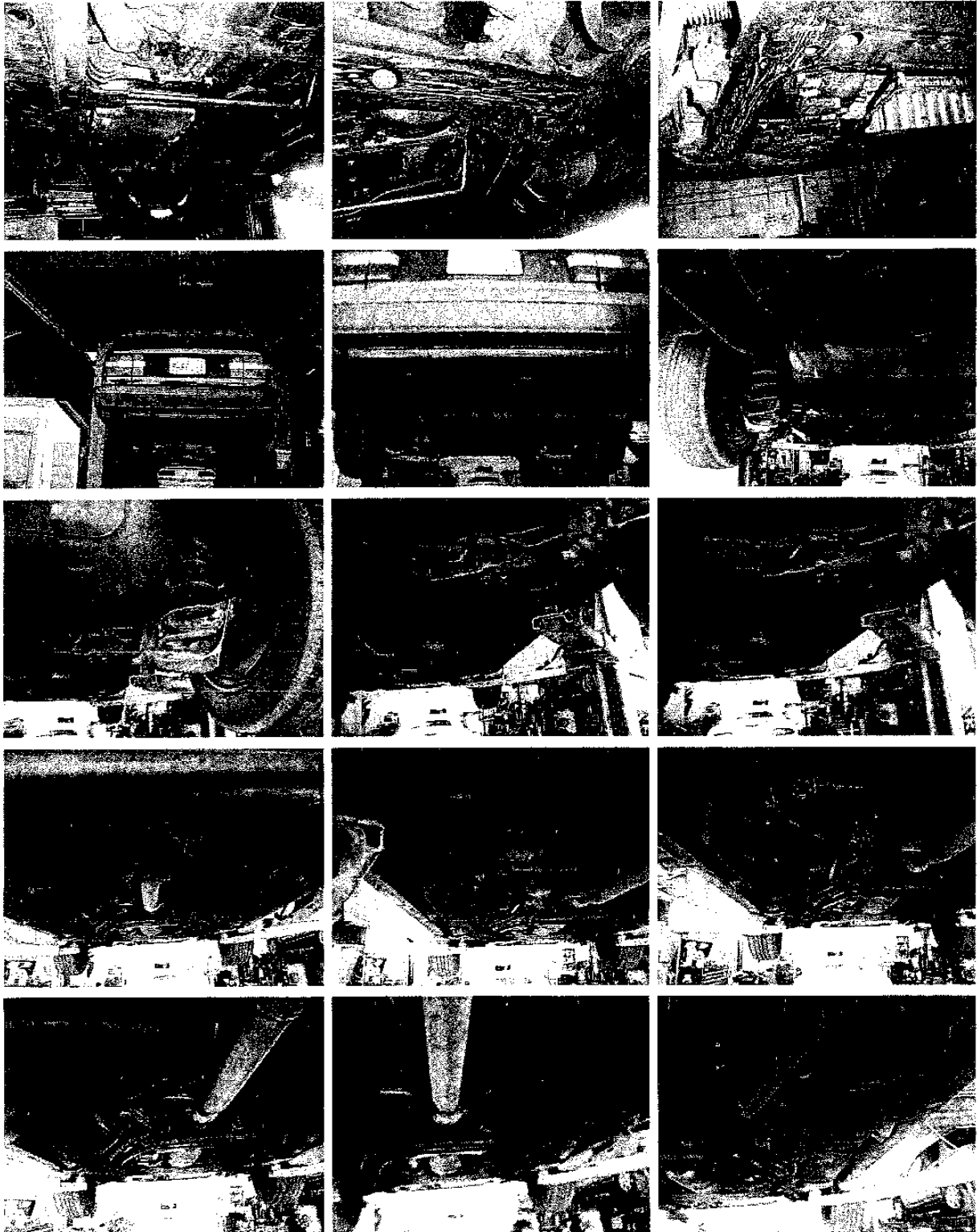
Print Image(s)













Copyright © 1999-2011 Mitchell International, Inc. All Rights Reserved. | Legal Notices

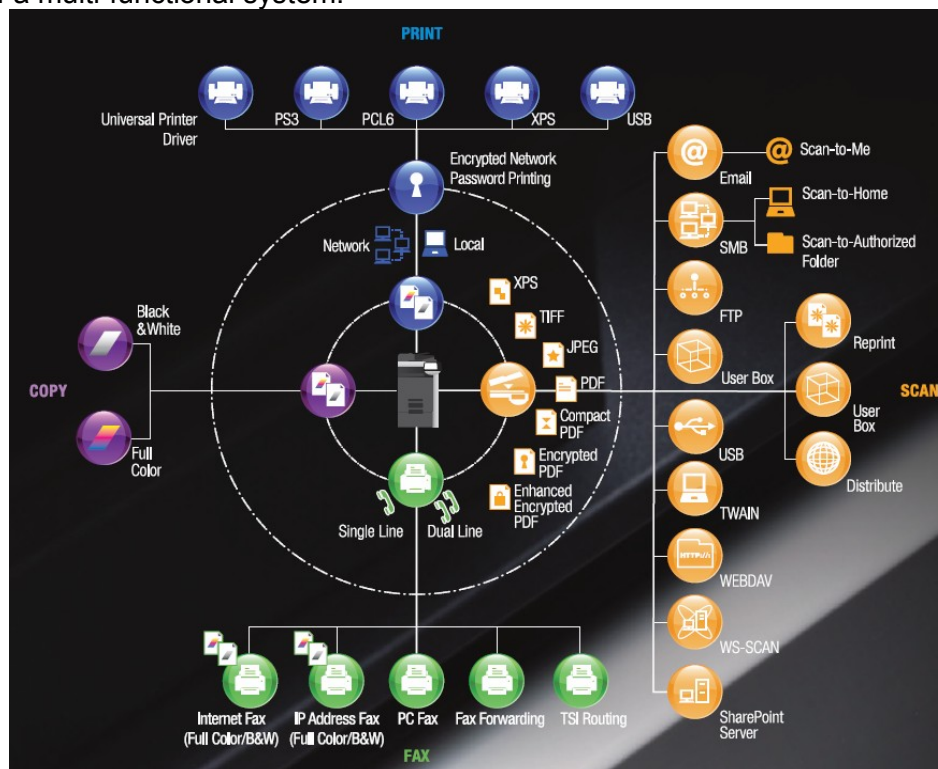


**Date:** July 26, 2011

**Subject:** Request to Purchase Two Replacement Multi-Function Copiers

The District currently utilizes an 85 page per minute copier<sup>1</sup> and a 52 page per minute copier<sup>2</sup> for producing copies of various black and white documents and reports. Over the past several years, the District staff has relied more on color laser printers to produce a wide variety of documents such as workshop packets, board packets, budgets, and other reports. The LaserJet printers produce documents up to a speed of 27 pages per minute and cost about \$0.099 per page for color copies (20% color) and \$0.0209 per page for black and white copies (5% black). Additionally, the District staff uses a high speed scanner<sup>3</sup> to transfer hard copies of documents and reports into our electronic filing system.

Due to the age and recent repairs of our office equipment and the cost of using laser printers to produce documents, the District staff has evaluated the purchase of two multi-functional color copiers to save money and consolidate our office equipment. The diagram below illustrates the concepts of a multi-functional system.



<sup>1</sup> This copier is a Minolta DI-850 placed into service on August 30, 2004 for a purchase price of \$30,405.

<sup>2</sup> This copier is a Minolta DI 520 placed into service on July 26, 2000 for a purchase price of \$21,497.

<sup>3</sup> The scanner used by the District staff is a Fujitsu Fi-5720C scanner placed into service on June 5, 2007 for a purchase price of \$6,031.

While some may view color reproduction of documents as a luxury, it is advantageous to provide information for the public and decision makers in a format that is clear, concise and reasonable. Additionally, the District continues to receive more reports, maps and documents from other agencies and companies that rely heavily upon color. The District should have the capability of scanning, reproducing and copying documents that we produce and receive.

During the evaluation process, the District staff reviewed the following copiers:

- Xerox Document Centre 265DC
- Minolta C652DS - 65 pages per minute black & white / 55 pages per minute color
- Minolta C552DS - 55 pages per minute black & white / 45 pages per minute color
- Ricoh MP C5501A - 65 pages per minute black & white / 60 pages per minute color
- Ricoh MP C6501A - 55 pages per minute black & white / 55 pages per minute color

Based on quotes received, the following cost information was compiled. The Xerox model has been discontinued so the following price evaluation was not included below.

	<b>Purchase Price</b>	<b>Black &amp; White Cost per copy</b>	<b>Color Cost per copy</b>
Minolta C652DS	\$10,900 + tax	\$0.006	\$0.052
Minolta C552DS	\$10,035 + tax	\$0.006	\$0.052
Ricoh MP C6501A	\$19,771 + tax	\$0.007	\$0.052
Ricoh MP C5501A	\$12,285 + tax	\$0.0097	\$0.054

The prices for the Ricoh copier do not include a \$600 - \$1,000 rebate for the current copiers since the District staff proposes to move one existing copier to the water filtration facility and the other existing copier to the wastewater treatment plant.

Currently, the District makes about 20,000 copies per month. This is expected to increase as more use will be placed on the copiers and less demand will be placed on the laser printers.

The District staff recommends the purchase of two Minolta C652DS copiers for a sum not to exceed \$23,500.

# Executive Summary

## CLIENT REQUIREMENTS

- Cost Effectiveness
- High Speed and Quality Scanning
- Ease of Use
- Reliability
- Compatibility with Current Technology
- Easy Integration into Current Environment

## APPLICATIONS / RECOMMENDATIONS

- High Quality, Multifunctional Copy / Print / Scan/Faxing
- Color & B&W all on same platform – Copy / Print / Scan with same interface

## RECOMENDED EQUIPMENT

Based on requirements, we recommend a new Bizhub C652.

This will allow for one interface across all equipment. This system will be able to Scan to SMB, have full box functionality, and print from the same driver interface.



- Includes: Copier/Printing/ Dual Scanning /Faxing
- 65 B&W - 55 Color Print / Copy
- Automatic Document Feeder
- Automatic Duplexing(2 sided copying)
- 4 PAPER DRAWERS
- *Finisher* w/stapling 2 & 3 hole-punching
- Magnification 25% to 400%
- Networked Ready for/printing & scanning
- 40 GB HDD w/1024 MB Memory
- Scan to SMB / Email / HDD / FTP
- Box Function for Scanning
- Embedded Image Controller

1003 East Brier Drive, Suite 120 San Bernardino, CA 92408 – 909-824-2000

# Executive Summary

## KONICA MINOLTA PURCHASE PRICING

Requires Special Electrical 20 AMP/120 Volt

**PROMOTIONAL PURCHASE PRICE:  
\$10,900.00 + tax**

### Optional Solutions Feature”

See brochure on E-Copy Scan Station: \$5,700.00 + Tax

See brochure on AutoStore Workflow: \$1,700.00 + Tax

### Service Coverage:

#### Extra Benefits of This Program:

Program includes: unlimited service, all parts, all color & Black **Toners**, labor, developer, drums, and staples for:

**Includes 10,000 Black/White Copies per month billed at .0060 per copy**  
*Color copies billed @ .0520 pay only for the copies you make ( Billed in arrears)*

Program excludes, paper, and obvious misuse or abuse.

#### *Set up, delivery and key operator training included*

I will be happy to address any questions that you may have. Feel free to call me at (909) 824-2000 at any time.

Brenda Anin  
Sr. National Account Representative

1003 East Brier Drive, Suite 120 San Bernardino, CA 92408 – 909-824-2000

# Executive Summary

## CLIENT REQUIREMENTS

- Cost Effectiveness
- High Speed and Quality Scanning
- Ease of Use
- Reliability
- Compatibility with Current Technology
- Easy Integration into Current Environment

## APPLICATIONS / RECOMMENDATIONS

- High Quality, Multifunctional Copy / Print / Scan/Faxing
- Color & B&W all on same platform – Copy / Print / Scan with same interface

## RECOMENDED EQUIPMENT

Based on requirements, we recommend a new Bizhub C552.

This will allow for one interface across all equipment. This system will be able to Scan to SMB, have full box functionality, and print from the same driver interface.



- Includes: Copier/Printing/ Dual Scanning /Faxing
- 55 B&W - 45 Color Print / Copy
- Automatic Document Feeder
- Automatic Duplexing(2 sided copying)
- 4 PAPER DRAWERS
- *Finisher* w/stapling 2 & 3 hole-punching
- Magnification 25% to 400%
- Networked Ready for/printing & scanning
- 40 GB HDD w/1024 MB Memory
- Scan to SMB / Email / HDD / FTP
- Box Function for Scanning
- Embedded Image Controller

1003 East Brier Drive, Suite 120 San Bernardino, CA 92408 – 909-824-2000

# Executive Summary

## KONICA MINOLTA PURCHASE PRICING

Requires Special Electrical 20 AMP/120 Volt

**PROMOTIONAL PURCHASE PRICE:  
\$10,035.00 + tax**

### Optional Solutions Feature”

See brochure on E-Copy Scan Station: \$5,700.00 + Tax

See brochure on AutoStore Workflow: \$1,700.00 + Tax

### Service Coverage:

#### Extra Benefits of This Program:

Program includes: unlimited service, all parts, all color & Black **Toners**, labor, developer, drums, and staples for:

**Includes 10,000 Black/White Copies per month billed at .0060 per copy**  
*Color copies billed @ .0520 pay only for the copies you make ( Billed in arrears)*

Program excludes, paper, and obvious misuse or abuse.

#### *Set up, delivery and key operator training included*

I will be happy to address any questions that you may have. Feel free to call me at (909) 824-2000 at any time.

Brenda Anin  
Sr. National Account Representative

1003 East Brier Drive, Suite 120 San Bernardino, CA 92408 – 909-824-2000



## About Our Solution

### Ricoh Aficio MP C6501

#### Copy

- ❖ 65ppm B&W 60ppm Full Color Copy / Print / Scan
- ❖ 150 Sheet Automatic Document Feeder (**Scans both Sides In a Single Pass!**)
- ❖ Copy Size up to 12x18
- ❖ 3,400 Sheet Paper Capacity (4 Sources)
- ❖ @ Remote ( Proactive Remote Monitoring of Service, Supplies & Meters!)
- ❖ Automatic 2/3 Hole Punching
- ❖ FAX / LAN Fax from Computer / Fax Forward to Email
- ❖ 3,000 Sheet Finisher with 50 Sheet Multi-Position Stapling

#### Scan

- ❖ 82 ipm B&W and 70 ipm Full Color Scanning Speed
- ❖ File Formats Supported: TIFF, JPEG & PDF
- ❖ Scan to: Email, Folder, Network, TWAIN, URL & USB/SD CARD
- ❖ Up to 600 dpi Resolution

#### Print

- ❖ 320GB Hard Drive to Store and Manage Critical Documents
- ❖ 1.4 GHz Print Controller with 2 GB of RAM
- ❖ Print Sample, Print Locked, Print Hold & Print Stored
- ❖ 1,200 x 1,200 dpi Resolution

#### Options

- ❖ Saddle Stitch Booklet Maker
- ❖ LCT High Capacity Paper Feeders
- ❖ Inline Multi-Folding Unit (Includes 6 different folds)
- ❖ Inline Ring Binding, Interposer, 9 Bin Mailbox, 100 sheet staple Finisher & More!

*...REDEFINING Your Document Management Strategy*



## Recommended Technology Implementations

Qty	Model	Description	MSRP	YVWD
1	Ricoh MP C6501	<b>65 ppm Color Copier/Printer/Scanner</b>	\$35,100.00	\$16,804.00
1	PU Type 3260	2/3 Hole Punch Unit	\$920.00	\$356.00
1	SR 4030	3000 Sheet 50 sheet Staple Finisher	\$3,860.00	\$1,991.00
1	Fax Type C6501	Fax Option	\$1,375.00	\$475.00
1	USB Type F	USB 2.0/SD Slot	\$356.00	\$145.00
			<b>\$41,611.00</b>	

### Purchase Option:

*Ricoh Political Sub-division Price: \$19,771.00 +tax  
Includes all Delivery Set-Up and Unlimited Training*

### Full Service and Supply Agreement Option:

*\$0.007 Per Black & White Page  
\$0.052 Per Color Page  
Includes ALL unlimited Service & Supplies excluding paper & additional staples*

### Notes:

- ✓ **Imaging Plus will bill you for the exact volume that you run, No Minimum!!!**
- ✓ **Ricoh Trade In Program will give you \$1,000.00 Rebate for current Copier!**
- ✓ **Imaging Plus will include at No Charge an MBM 93M Desktop Folding Unit! (1- Folding unit total)**

*...REDEFINING Your Document Management Strategy*



## About Our Solution

### Ricoh Aficio MP C5501A

#### Copy

- ❖ 55ppm B&W 55ppm Full Color Copy / Print / Scan
- ❖ 100 Sheet Automatic Document Feeder (**Scans both Sides In a Single Pass!**)
- ❖ Copy Size up to 12x18
- ❖ 2,300 Sheet Paper Capacity (5 Sources)
- ❖ @ Remote ( Proactive Remote Monitoring of Service, Supplies & Meters!)
- ❖ Automatic 2/3 Hole Punching
- ❖ FAX / LAN Fax from Computer / Fax Forward to Email
- ❖ 3,000 Sheet Finisher with 50 Sheet Multi-Position Stapling

#### Scan

- ❖ 67 ipm B&W and Full Color Scanning Speed
- ❖ File Formats Supported: TIFF, JPEG & PDF
- ❖ Scan to: Email, Folder, Network, TWAIN, URL & USB/SD CARD
- ❖ Up to 600 dpi Resolution

#### Print

- ❖ 160GB Hard Drive to Store and Manage Critical Documents
- ❖ 1.0 GHz Print Controller with 1.5 GB of RAM
- ❖ Print Sample, Print Locked, Print Hold & Print Stored
- ❖ 1,200 x 1,200 dpi Resolution

#### Options

- ❖ Saddle Stitch Booklet Maker
- ❖ LCT High Capacity Paper Feeders & More!

*...REDEFINING Your Document Management Strategy*



## Recommended Technology Implementations

Qty	Model	Description	MSRP	YVWD
1	Ricoh MP C5501A	<b>55 ppm Color Copier/Printer/Scanner</b>	\$20,460.00	\$9,318.00
1	PU Type 3260	2/3 Hole Punch Unit	\$920.00	\$356.00
1	SR 3030	3000 Sheet 50 Sheet Staple Finisher	\$2,860.00	\$1,242.00
1	BU 3030	Finisher Bridge Unit	\$230.00	\$99.00
1	PB 3100	1,100 Sheet Paper Feed Unit (Tray 3 & 4)	\$1,780.00	\$650.00
1	Fax Type C5501	Fax Option	\$1,375.00	\$475.00
1	USB Type F	USB 2.0/SD Slot	\$356.00	\$145.00

\$27,981.00

### Purchase Option:

*Ricoh Political Sub-division Price: \$12,285.00 +tax  
Includes all Delivery Set-Up and Unlimited Training*

### Full Service and Supply Agreement Option:

*\$0.0097 Per Black & White Page*

*\$0.054 Per Color Page*

*Includes ALL unlimited Service & Supplies excluding paper & additional staples*

### Notes:

- ✓ **Imaging Plus will bill you for the exact volume that you run, No Minimum!!!**
- ✓ **Ricoh Trade In Program will give you \$600.00 Rebate for your current Copier!**
- ✓ **Imaging Plus will include at No Charge an MBM 93M Desktop Folding Unit!**

...REDEFINING Your Document Management Strategy