



Yucaipa Valley Water District

Notice and Agenda of a Board Workshop

Tuesday, February 7, 2012 at 4:00 p.m.

MEETING LOCATION: District Administration Building
12770 Second Street, Yucaipa

MEMBERS OF THE BOARD: Director Ian Cuthbertson, Division 1
Director Bruce Granlund, Division 2
Director Jay Bogh, Division 3
Director Lonni Granlund, Division 4
Director Hank Wochholz, Division 5

I. Call to Order

II. Public Comments At this time, members of the public may address the Board of Directors on matters within its jurisdiction; however, no action or significant discussion may take place on any item not on the meeting agenda.

III. Staff Report

IV. Development Issues

A. Overview of Plan Check and Inspection Services for New Development
[\[Workshop Memorandum No. 12-024 - Page 5 of 67\]](#)

B. Development Agreement for Tract No. 13375 Located on Oak Glen Road
Approximately 1,500 Feet East of Fremont Street, Yucaipa [\[Workshop Memorandum No. 12-025 - Page 6 of 67\]](#)

V. Capital Improvement Projects

A. Status Report on the Construction of the Yucaipa Valley Regional Brineline
[\[Workshop Memorandum No. 12-026 - Page 21 of 67\]](#)

B. Status Report on the Construction of the R-10 Recycled Water Reservoir and
Booster Complex [\[Workshop Memorandum No. 12-027 - Page 26 of 67\]](#)

C. Status Report on the Construction of the Crow Street Pipeline Facilities [\[Workshop Memorandum No. 12-028 - Page 28 of 67\]](#)

D. Status Report on the Construction of the Recycled Water Booster Facility at the
Reservoir R-12.1 Complex [\[Workshop Memorandum No. 12-029 - Page 29 of 67\]](#)

Any person with a disability who requires accommodation in order to participate in this meeting should telephone Erin Anton at (909) 797-5117, at least 48 hours prior to the meeting in order to make a request for a disability-related modification or accommodation.

Materials related to an item on this agenda submitted to the Board of Directors after distribution of the workshop packet are available for public inspection during normal business hours at the District office located at 12770 Second Street, Yucaipa. Meeting material is also be available on the District's website at www.yvwd.dst.ca.us

- E. Status Report on the Construction of the Wochholz Improved Salinity Effluent (WISE) Project [[Workshop Memorandum No. 12-030 - Page 30 of 67](#)]

VI. Administrative Issues

- A. Unaudited Financial Report for the Period Ending on January 31, 2012 [[Workshop Memorandum No. 12-031 - Page 33 of 67](#)]
- B. Denial of Claim Related to Lack of Water Pressure at 13058 Fifth Street, Yucaipa [[Workshop Memorandum No. 12-032 - Page 63 of 67](#)]

VII. Director Comments

VIII. Closed Session

- A. Conference with Real Property negotiator(s) (Government Code 54956.8)
Property: Assessor's Parcel Number: 301-201-29
Agency Negotiator: Joseph Zoba, General Manager
Negotiating Parties: Palmer General Corporation
Under Negotiation: Terms of Payment and Price
- B. Conference with Labor Negotiator (Government Code 54957.6)
District Negotiator: Joseph Zoba, General Manager
Employee Organization: IBEW Local Union 14356 - YVWD Employees Association
- C. Conference with Labor Negotiator (Government Code 54957.6)
District Negotiator: Joseph Zoba, General Manager
Employee Organization: Supervisor Bargaining Unit
- D. Conference with Labor Negotiator (Government Code 54957.6)
District Negotiator: Joseph Zoba, General Manager
Employee Organization: Confidential Employee Bargaining Unit
- E. Conference with Labor Negotiator (Government Code 54957.6)
District Negotiator: Joseph Zoba, General Manager
Employee Organization: Exempt Employee Bargaining Unit

IX. Adjournment

STAFF REPORT

DEVELOPMENT ISSUES



Date: February 7, 2012

Subject: Overview of Plan Check and Inspection Services for New Development

At the regular board meeting on February 1, 2012, Richard Siegmund provided public comments regarding the process used by the Yucaipa Valley Water District for plan check and inspection services. The specific issues raised by Mr. Siegmund are related to the design and construction of infrastructure required to provide water and sewer service to new development.

During this agenda item, the District staff will provide an overview of the plan check and inspection process used for infrastructure constructed by developers.



Date: February 7, 2012

Subject: Development Agreement for Tract No. 13375 Located on Oak Glen Road Approximately 1,500 Feet East of Fremont Street, Yucaipa

Attached is a copy of a draft development agreement for the construction of nine homes located on Oak Glen Road. An overview of the proposed agreement will be provided at the board workshop.

AGREEMENT NO. 02-2011

AGREEMENT TO PROVIDE WATER AND SEWER SERVICE TO THE PRIVATE DEVELOPMENT OF TRACT NO. 13375

This Agreement is made and effective this 15th Day of February, 2012, by and between the YUCAIPA VALLEY WATER DISTRICT, a public agency ("DISTRICT") and Richard Siegmund, ("DEVELOPER"). Each is sometimes referred to herein as a "Party" and jointly as the "Parties".

Contact information for the parties is as follows:

DISTRICT:

Yucaipa Valley Water District
12770 Second Street
Post Office Box 730
Yucaipa, California 92399-0730
Attn: Joseph B. Zoba, General Manager
Telephone: (909) 797-5119
Facsimile: (909) 797-6381

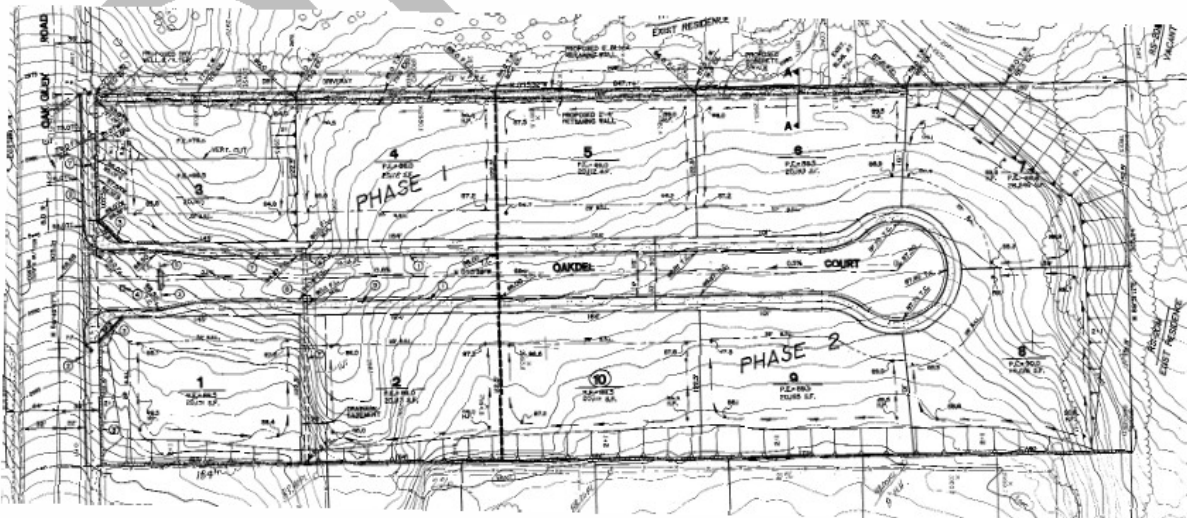
DEVELOPER:

Richard Siegmund
Post Office Box 968
Yucaipa, California 92399
Attn: Richard Siegmund
Telephone: (951) 538-1525
Facsimile: (951) _____

PROJECT OVERVIEW

This project involves the development of nine residential lots, each lot is greater than 20,000 square feet in size. The project is located on Oak Glen Road, approximately 1,500 feet east of Fremont Street in the City of Yucaipa.

The Yucaipa Valley Water District has been involved in the review and planning of this project since the mid-1980's. The District has assigned a project file P-65-67 to the proposed development.



WHEREAS, DEVELOPER desires to develop its property situated within the service area of the DISTRICT, and

WHEREAS, DEVELOPER proposes to develop the DEVELOPER's Property in the manner generally proposed and in accordance with the currently approved maps and construction drawings reviewed by the Yucaipa Valley Water District at this time, and

WHEREAS, DEVELOPER desires to obtain water (as used herein, "water" includes recycled water where applicable) and sewer service from the DISTRICT for its development in accordance with the DISTRICT's Rules, Regulations and Policies; and

WHEREAS, it is the purpose of this Agreement to set forth the terms and conditions by which the DISTRICT will provide water and sewer service to the DEVELOPER's Property.

AGREEMENT

NOW, THEREFORE, in consideration of the mutual promises and covenants contained herein, the DEVELOPER and the DISTRICT agree as follows:

PART A: THE FACILITIES

1. General Description.

a. The DEVELOPER proposes to develop its Property as provided on the approved development construction drawings approved by the DISTRICT which includes potable and recycled water and sewer facilities necessary to serve the development. Prior to receiving service, easements for all water and sewer facilities within the Project shall be secured for DISTRICT related utilities.

b. Ownership, Operation and Maintenance: Once constructed and accepted by the DISTRICT, title to the facilities (and associated right-of-way) shall be conveyed by the DEVELOPER to the DISTRICT, and the DISTRICT shall operate and maintain the facilities and shall provide water and sewer service to the DEVELOPER's Property in accordance with the DISTRICT's rules and regulations and the provisions of this Agreement.

PART B: DESIGN AND CONSTRUCTION

2. Licensed Professionals. All work, labor and services performed and provided in connection with the preparation of real property and right-of-way surveys and descriptions, the preparation of construction specifications, plans and drawings, and the construction of all facilities, shall be performed by, or under the direction of, professionals appropriately licensed by the State of California and in good standing. In the event the DISTRICT reasonably determines, in its sole discretion, that additional licensed professionals are required in order to satisfy the obligations of the DEVELOPER hereunder, the DEVELOPER shall promptly retain such professionals at its sole cost and expense.

3. Plan Acceptance; Facility Acceptance.

a. The DISTRICT shall promptly review and respond to all plans and specifications ("Plans") related to the construction of the facilities. Upon its final review and approval of the plans, the DISTRICT shall sign the construction drawings ("Plan Acceptance") indicating such approval. Plans are subject to an annual review by the District and modifications may be made by the DISTRICT to conform to revised and/or improved construction standards.

b. The DEVELOPER shall not permit, or suffer to permit, the construction of any Facility without having first obtained Plan Acceptance. In the event the DEVELOPER fails or refuses to obtain the DISTRICT's Plan Acceptance, the DISTRICT may refuse, in its sole discretion and without liability to the DEVELOPER, to issue its Facility Acceptance (as that term is defined below) as to such Facility when completed.

c. The DEVELOPER shall not deviate from any approved plans and/or specifications without the DISTRICT's prior written approval.

d. All construction work shall be inspected on a timely basis by DISTRICT personnel and/or by DISTRICT's consultants at the sole cost of the DEVELOPER. The DEVELOPER acknowledges that the inspector(s) shall have the authority to require that any and all unacceptable materials, workmanship, construction and/or installation not in conformance with either (i) the Plans subject to a Plan Acceptance (as modified by any later Plan Acceptances), or (ii) standard practices, qualities and standards in the industry, as reasonably determined by the DISTRICT, shall be replaced, repaired or corrected at DEVELOPER's sole cost and expense.

e. In the event the DEVELOPER's contractor proposes to work overtime and beyond normal business hours, the DEVELOPER shall obtain the DISTRICT's approval at least 24 hours in advance so that inspection services may be appropriately scheduled. The DEVELOPER shall be solely responsible for paying all costs and expenses associated with such inspection services.

f. The DISTRICT shall promptly upon request of DEVELOPER, cause the final inspection of a Facility which DEVELOPER indicates is completed. If the DISTRICT finds such Facilities to have been completed in conformance with the Plans for which a Plan Acceptance has been issued, then DISTRICT shall promptly issue to DEVELOPER its letter ("Facility Acceptance") indicating satisfactory completion of the Facility and DISTRICT's acceptance thereof. Neither inspection nor issuance of the Facility Acceptance shall constitute a waiver by DISTRICT of any claims it might have against DEVELOPER for any defects in the work performed, the materials provided, or the Facility constructed, to the extent such represents a deviation from the Plans approved by the DISTRICT pursuant to the Plan Acceptance.

4. Project Coordination and Designation of DEVELOPER's Representative.

a. The DEVELOPER shall be solely responsible for coordinating the provision of all work, labor, material and services associated with the planning, design and construction of the water and sewer Facilities required for the DEVELOPER's project. The DEVELOPER shall be solely responsible for compliance with all applicable federal, state

and local safety rules and regulations, and shall conduct periodic safety conferences as required by law and common sense.

b. Prior to proceeding with any Facility construction, the DEVELOPER shall schedule and conduct a preconstruction conference with the DISTRICT's General Manager and the DISTRICT Engineer and/or their designees or agents. In the event the DEVELOPER fails or refuses to conduct any such conference, the DISTRICT may refuse, in its sole discretion, to accept the Facilities constructed by the DEVELOPER.

c. The DISTRICT and the DEVELOPER hereby designate the individual identified on page 1 of this Agreement as the person who shall have the authority to represent the DISTRICT and DEVELOPER in matters concerning this Agreement. In order to ensure maximum continuity and coordination, the DISTRICT and DEVELOPER agree not to arbitrarily remove or replace the authorized representative, but in the event of a substitution, the substituting Party shall promptly advise the other Party of such substitution, in writing.

5. DISTRICT's Right to Complete Facilities. The DISTRICT is hereby granted the unqualified right to complete, at DEVELOPER's sole cost and expense, all or any portion of the water and sewer Facilities constructed hereunder in the event the work is abandoned (as defined herein) and such abandonment constitutes a threat to the public's health, safety or welfare.

6. Construction of Connections to DISTRICT Facilities. Unless otherwise agreed to in writing by the DISTRICT, the DISTRICT shall furnish all labor, materials and equipment necessary to construct and install connections between the DEVELOPER's Facilities and the DISTRICT's water, recycled water, and sewer systems. All costs and expenses associated therewith shall be paid by the DEVELOPER.

7. Compliance With Law and DISTRICT Regulations. The DEVELOPER hereby agrees that all Facilities shall be planned, designed and constructed in accordance with all applicable laws, rules, regulations and policies in effect at the time of construction. The DEVELOPER shall strictly comply with all applicable law, rules and regulations, concerning the provision of services, materials and the payment of wages. The DEVELOPER shall keep fully informed of and obey all laws, rules and regulations, and shall indemnify the DISTRICT against any liability arising from DEVELOPER's violation of any such law, rule or regulation.

8. DEVELOPER's Warranties. The DEVELOPER shall unconditionally guaranty, for a period of one year following the DISTRICT's Facility Acceptance thereof, any and all materials and workmanship, at the DEVELOPER's sole cost and expense. The provision of temporary water service through any of the DEVELOPER's Facilities, prior to DISTRICT's acceptance of same, shall not nullify nor diminish the DEVELOPER's warranty obligation, nor shall the DEVELOPER's warranty obligation be voided if the DISTRICT determines, in its sole discretion, to make any emergency repairs necessary to protect the public's health, safety or welfare or to ensure continuity of water or sewer service. The DISTRICT shall notify DEVELOPER of such emergency repairs.

9. Testing and Disinfection. Upon approval by the DISTRICT, the DEVELOPER, at its sole cost and expense, shall undertake and satisfactorily complete a testing program for all Facilities prior to acceptance by the DISTRICT, and to disinfect all water Facilities in accordance with the DISTRICT's procedures and other applicable laws, rules and regulations.

10. Bond Requirements. The DEVELOPER shall provide to the DISTRICT, in a form satisfactory to the DISTRICT, the following bonds:

a. A Performance and Warranty Bond. A performance bond issued by a corporate surety or sureties licensed and permitted to do business by and within the State of California in an amount not less than one hundred percent (100%) of any and all construction work to be conducted or performed under this Agreement. A warranty bond issued by a corporate surety or sureties licensed and permitted to do business by and within the State of California in an amount not less than one hundred percent (100%) of the total cost of any and all construction performed hereunder, insuring against any and all defects in the Facilities constructed hereunder, for a period of not less than one full year after the date of acceptance thereof by the DISTRICT.

b. A Labor and Materials Payment Bond issued by a corporate surety or sureties licensed and permitted to do business by and within the State of California in an amount not less than one hundred percent (100%) of the total cost of any and all construction performed hereunder per California Civil Code Sections 3247 and 3248(a).

c. Miscellaneous Bond Requirements. All bonds required by this Section 10 shall be provided to the DISTRICT within sixty (60) days of the date that this Agreement was approved by the DISTRICT's Board of Directors. All bonds required by this section are subject to the approval as to form and content by the General Manager and DISTRICT's Legal Counsel. All bonds required by this section shall be provided by a surety that is an "admitted" surety insurer authorized to transact surety insurance in California, with assets exceeding its liabilities in the amount equal to or in excess of the amount of the bonds, and each bond shall not be in excess of ten percent (10%) of the surety insurer's assets. The bond shall be duly executed and shall meet all of the requirements of Section 995.660 of the Code of Civil Procedure.

PART C: TITLE TO FACILITIES; OPERATION

11. Title to Facilities and Right-of-Way.

a. Provided that the DEVELOPER's Facilities are designed and constructed as required hereunder and the DISTRICT proposes to issue its Facility Acceptance, the DEVELOPER shall, concurrently with the DISTRICT's Facility Acceptance, convey ownership title to all Facilities (and right-of-way, if applicable) to the DISTRICT, free and clear of any and all liens and encumbrances except those that are expressly agreed to by the DISTRICT. The DISTRICT may require fee title or an easement, depending upon the location of the Facility through action by the Board of Directors. Upon conveyance of title, the DISTRICT shall assume the responsibility of operating and maintaining the Facilities, subject to the DEVELOPER's warranty as provided herein. The DEVELOPER acknowledges and agrees that the DISTRICT shall not be obligated to operate and maintain the Facilities and to provide service to and through them until all applicable conditions hereunder are satisfied and title to the Facilities has been conveyed and delivered to the DISTRICT in recordable form.

b. A form for the *Grant of Easement and Rights-of-Way* and *Bill of Sale of the Facilities* is available from the District upon request.

12. Risk of Loss. Until such time as acceptance thereof by the DISTRICT, and until good and marketable title to the easements, rights-of-way and Facilities are conveyed and delivered to the DISTRICT in recordable form, the DEVELOPER shall be solely and completely responsible for any and all losses and/or damage of every kind or nature to the easements, rights-of-way and Facilities.

13. Conditions Precedent to the Provision of Water and Sewer Service. Unless the DISTRICT otherwise agrees in writing, the DISTRICT shall not be obligated to provide any water and/or sewer service to the DEVELOPER's project or any part thereof, including model homes, until after all of the appropriate obligations imposed upon the DEVELOPER have been fulfilled including, without limitation, conveyance to the DISTRICT of the right-of-way and Facilities associated with the requested service. Upon acceptance of the right-of-way and appurtenant Facilities and upon such other terms and conditions as may be reasonable, the DISTRICT shall provide the service requested and assume the responsibility for operating and maintaining the affected Facilities. Service provided by the DISTRICT shall be in accordance with its rules and regulations and shall be comparable in quality of service to that provided all similarly situated customers.

PART D: FEES AND CREDITS

14. DEVELOPER's Fees, Charges, Costs and Expenses. The DEVELOPER shall be solely responsible for the payment to the DISTRICT of all fees, charges, costs and expenses related to this development.

a. DEVELOPER Trust Account Deposit: The DEVELOPER shall deposit with the DISTRICT, to be held in a trust account administered by the DISTRICT, the sum of 10% of the construction costs as a deposit prior to receiving grading/building permits for the Project. The DEVELOPER acknowledges and hereby agrees that the DISTRICT is authorized, from time-to-time, to reimburse itself from the funds on deposit. The District shall provide a monthly accounting of how funds were disbursed. The DEVELOPER further agrees to periodically and promptly replenish, upon a billing issued therefore by the DISTRICT, the trust fund in order to maintain a minimum amount as specified by the DISTRICT. Should any unexpended funds remain in the trust account upon termination of this Agreement, then such funds shall be reimbursed to the DEVELOPER.

b. Current Fees and Charges: In the event of a change in the DISTRICT's schedule of fees and charges, such change shall automatically be incorporated into this Agreement as though set forth in full. Unless otherwise agreed to in writing by the DISTRICT, the DEVELOPER shall pay, when due, the then-current amount of the applicable fee or charge.

15. DISTRICT Financial Participation; Credits. The DISTRICT may agree to participate in certain facilities for this Project. Any participation or financial contribution to construct the water and wastewater infrastructure associated with this project is contained in Part G - Special Conditions of this Agreement.

PART E: PERMITS AND DOCUMENTATION

16. Permits, Licenses and CEQA Documentation. The DEVELOPER shall be solely responsible for securing and paying for all permits and licenses necessary to develop its project. The DEVELOPER shall be solely responsible for complying with the California Environmental Quality Act under the auspices of the City and/or County within which the Property is situated. However, upon request, the DEVELOPER shall furnish to the DISTRICT all relevant environmental documentation and information. The DEVELOPER, at its sole cost and expense, shall be solely responsible for defending against any and all legal challenges to the DEVELOPERS entitlements including permits, licenses and CEQA documents.

17. Documents Furnished by the DEVELOPER. The DEVELOPER shall furnish to the DISTRICT project documentation as required by the District specified below, within the time periods specified. Each and every document submittal shall consist of a fully executed original or certified copy (in recordable form, if applicable) and four copies.

Document(s)	Due Date
Certification of Streets to Rough Grade	Prior to Construction
Field Engineering Surveys ("Cut Sheets")	Prior to Construction
Liability Insurance Certificate(s)	Prior to Construction
Performance Bond	Prior to Construction
Labor and Materials Bond	Prior to Construction
Warranty Bond	Prior to Construction
City/County Encroachment Permits and Conditions	Prior to Construction
Soil Compaction Tests	Prior to Acceptance
Grant of Easements and Rights-of-Way	Prior to Acceptance
Bill of Sale	Prior to Acceptance
List of Approved Street Addresses and Assessor Parcel Numbers	Prior to Setting Meter
Notice of High/Low Water Pressure	Prior to Setting Meter
Notice of Water Pumping Facility	Prior to Construction
Mechanic's Lien Releases	Upon Request of District

NOTE: The DEVELOPER hereby acknowledges and agrees that the foregoing list is not intended to be exclusive; therefore, the DISTRICT reserves the right to request, from time-to-time, additional documents or documentation or not require certain documents listed above.

PART F: INSURANCE AND INDEMNIFICATION

18. Indemnification and Hold Harmless. The DEVELOPER and the DISTRICT agree that the DISTRICT should, to the extent permitted by law, be fully protected from any loss, injury, damage, claim, lawsuit, cost, expense, attorneys' fees, litigation costs, defense costs, court costs or any other costs arising out of or in any way related to the performance by DEVELOPER of this Agreement. Accordingly, the provisions of this indemnity provision are intended by the parties to be interpreted and construed to provide the fullest protection possible under the law to the DISTRICT, except for liability attributable to the DISTRICT's active negligence. DEVELOPER acknowledges that the DISTRICT would not enter into this Agreement in the absence of this commitment from the DEVELOPER to indemnify and protect the DISTRICT as set forth here.

Therefore, the DEVELOPER shall defend, indemnify and hold harmless the DISTRICT, its employees, agents and officials, from any liability, claims, suits, actions, arbitration proceedings, administrative proceedings, regulatory proceedings, losses, expenses or costs of any kind,

whether actual, alleged or threatened, actual attorneys' fees incurred by the DISTRICT, court costs, interest, defense costs including expert witness fees and any other costs or expenses of any kind whatsoever without restriction or limitation incurred in relation to, as a consequence of or arising out of or in any way attributable actually, allegedly or impliedly, in whole or in part in the performance by DEVELOPER of this Agreement. All obligations under this provision are to be paid by the DEVELOPER as incurred by the DISTRICT.

19. Insurance. The DEVELOPER agrees to provide insurance in accordance with the requirements set forth here throughout the term of this Agreement. If the DEVELOPER uses existing coverage to comply with these requirements and that coverage does not meet the requirements set forth herein, the DEVELOPER agrees to amend, supplement or endorse the existing coverage to do so. The following coverages will be provided by the DEVELOPER and maintained on behalf of the DISTRICT and in accordance with the requirements set forth herein.

a. Commercial General Liability Insurance (Primary) shall be provided on ISO-CGL Form No. CG 00 01 10 93. Policy limits shall be no less than \$1,000,000 per occurrence for all coverages and \$2,000,000 general aggregate. The DISTRICT and its officials, employees and agents shall be added as additional insureds using ISO Form CG 20 10 10 93. Coverage shall apply on a primary non-contributing basis in relation to any other insurance or self-insurance, primary or excess, available to the DISTRICT or any employee or agent of the DISTRICT. Coverage shall not be limited to the vicarious liability or supervisory role of any additional insured. Coverage shall contain no contractors' limitation endorsement. There shall be no endorsement or modification limiting the scope of coverage for liability arising from explosion, collapse, or underground property damage.

b. Umbrella Liability Insurance (over Primary) shall apply to bodily injury/property damage, personal injury/advertising injury, at a minimum, and shall include a "drop down" provision providing primary coverage above a maximum \$25,000 self-insured retention for liability not covered by primary policies but covered by the umbrella policy. Coverage shall be following form to any underlying coverage. Coverage shall be provided on a "pay on behalf" basis, with defense costs payable in addition to policy limits. There shall be no cross-liability exclusion and no contractor's limitation endorsement. Policy limits shall be no less than \$2,000,000 per occurrence and in the aggregate, above any limits required in the underlying policies. The policy shall have starting and ending dates concurrent with the underlying coverages.

c. Workers' Compensation/Employer's Liability shall provide workers' compensation statutory benefits as required by law. Employer's liability limits shall be no less than \$1,000,000 per accident or disease. Employer's liability coverage shall be scheduled under any umbrella policy described above. Unless otherwise agreed, this policy shall be endorsed to waive any right of subrogation as respects the DISTRICT, its employees or agents.

d. The DEVELOPER and the DISTRICT further agree as follows:

i. All insurance coverage provided pursuant to this Agreement shall not prohibit the DEVELOPER, and the DEVELOPER's employees or agents, from waiving the right of subrogation prior to a loss. The DEVELOPER waives its right of subrogation against the DISTRICT.

ii. Unless otherwise approved by the DISTRICT in writing, the DEVELOPER's insurance shall be written by insurers authorized to do business in the State of California and with a minimum "Best's" Insurance Guide rating of "A:VII". Self-insurance will not be considered to comply with these insurance specifications.

iii. The DEVELOPER agrees to provide evidence of the insurance required herein, satisfactory to the DISTRICT, consisting of certificate(s) of insurance evidencing all of the coverages required and an additional insured endorsement to the DEVELOPER's general liability and umbrella liability policies. Certificate(s) are to reflect that the insurer will provide 30 days notice of any cancellation of coverage. The DEVELOPER agrees to require its insurer to modify such certificate(s) to delete any exculpatory wording stating that failure of the insurer to mail written notice of cancellation imposes no obligation, and to delete the word "endeavor" with regard to any notice provisions. The DEVELOPER agrees to provide complete certified copies of policies to the DISTRICT within 10 days of the DISTRICT's request for such copies.

iv. In the event of any loss that is not insured due to the failure of the DEVELOPER to comply with these requirements, the DEVELOPER agrees to be responsible for any all losses, claims, suits, damages, defense obligations and liability of any kind attributed to the DISTRICT, or the DISTRICT's officials, employees and agents as a result of such failure.

v. The DEVELOPER agrees not to attempt to avoid its defense and indemnity obligations to the DISTRICT and its employees, agents and officials by using as defense the DEVELOPER's statutory immunity under workers' compensation and similar statutes.

PART G: SPECIAL CONDITIONS

20. The following conditions, being contained herein, will be required by the District in order to receive water, recycled water and sewer service for the Project.

a. Potable Water Related Facilities: An existing potable water pipelines currently exist within the boundary of Tract No. 13375 and shall be extended north within the development to serve the individual lots pursuant to Yucaipa Valley Water District rules and regulations as well as all current applicable standards for dual plumbed homes and fire sprinkler service.

b. Sewer Related Facilities: An existing sewer mainline currently exists within the boundary of Tract No. 13375 and shall be extended north within the development to serve the individual lots pursuant to Yucaipa Valley Water District rules and regulations.

c. Recycled Water Related Facilities: The existing home on Lot 1 and entrance feature for the development was constructed prior to the installation of any recycled water infrastructure. Due to the current progress of the development, a recycled water pipeline will not be required to be installed to provide service to lots within Tract No. 13375. However, Lots 2, 4, 5, 6, 7, 8, 9, and 10 will be required to have a second water meter for irrigation purposes and dedicated for the use of recycled water in the future.

The recycled water meter shall be identified as such and connected to the potable water mainline until a recycled water pipeline is constructed within the Development by the District.

d. The DEVELOPER shall pay all water, wastewater, and recycled water development impact fees based on the fee in effect at the time prior to receiving building permits. In the event of individual lot sales, the DEVELOPER shall provide written notification to the buyer of each lot about the required payment of development impact fees and recycled water use requirements.

f. The DEVELOPER shall be responsible for the payment of all invoices related to the Project. Any outstanding invoice amount is required to be paid prior to starting service to any individual lot within the tract boundary.

PART H: MISCELLANEOUS

21. Term and Termination of Agreement.

a. Unless extended by mutual agreement of the parties in writing, this Agreement shall terminate at 5:00 p.m., on the day before the sixth (6th) anniversary date of this Agreement; provided, however, that this Agreement shall automatically terminate, without further liability to either party, as follows:

i. If the Project related trust account maintains a negative fund balance for greater than 30 days, or if the DEVELOPER fails or refuses to make a trust account deposit sufficient to cure a negative account balance; or

ii. Within 6 months of the effective date of this Agreement, if the initial construction contemplated hereunder has not commenced within such time; or

iii. Immediately, upon abandonment or bankruptcy by the DEVELOPER of the DEVELOPER's project and/or the work hereunder; or

iv. Within 45 days of the date of the issuance of a Notice of Default by the DISTRICT to the DEVELOPER in the event the DEVELOPER fails or refuses to perform, keep or observe any of the terms, conditions or covenants set forth in this Agreement.

b. Any termination of this Agreement shall not be construed as a waiver of any claim the DISTRICT may have against the DEVELOPER or that the DEVELOPER may have against the DISTRICT.

c. In the event of termination, and in order to counteract any threat to the public's health, safety or welfare, the DISTRICT shall have the right, without liability to the DEVELOPER, to complete, at the DEVELOPER's non-reimbursable expense, all or a portion of the Facilities constructed pursuant to this Agreement.

d. Notwithstanding the foregoing, the Indemnification clauses contained herein shall survive the termination of this Agreement:

22. Status of the Parties. This Agreement is not intended to create, and nothing herein contained shall be construed to create, an association, a trust, a joint venture, a partnership or other entity of any kind, or to constitute either party as the agent, employee or partner of the other.
23. Amendment; Assignment.
- a. Amendment. This Agreement may be amended, from time-to-time, by mutual agreement of the DISTRICT and the DEVELOPER, in writing signed by both parties. The DISTRICT and the DEVELOPER further agree that to the extent this Agreement does not address all aspects of the DEVELOPER's phased Project, the parties shall meet and confer and negotiate in good faith, and execute a written amendment or supplement to this Agreement.
- b. Assignment. This Agreement shall not be assigned, whether in whole or in part, by the DEVELOPER without the prior written consent of the DISTRICT, which consent may be withheld in the event that the DISTRICT determines, in its sole discretion, that the assignee is not financially capable of assuming the obligations of the assignor under this Agreement. This Agreement shall bind the parties hereto and their respective successors and assigns.
24. Force Majeure. If either the DISTRICT or the DEVELOPER is delayed, hindered or prevented from performing any term of this Agreement by any cause beyond either party's control including, without limitation, any strike, walkout, prohibitions imposed by law, rules or regulations, riot, war, act of God or the default of the other party, then such performance may be excused or the time of performance tolled during the period of delay.
25. Incorporation of Prior Agreements. This Agreement contains all of the agreements of the parties with respect to any matter covered or mentioned in this Agreement, and no prior agreement or understanding pertaining to any such matter shall be effective for any purpose.
26. Waiver. No waiver by either party of any provisions of this Agreement shall be deemed to be a waiver of any other provision hereof or of any subsequent breach by either party of the same or any other provisions.
27. Severance. If any provision of this Agreement is determined to be void by any court of competent jurisdiction then such determination shall not affect any other provision of this Agreement provided that the purpose of this Agreement is not frustrated.
28. DISTRICT's Disclaimer. Utilizing fees and Facilities provided to the DISTRICT by the DEVELOPER, the DISTRICT will supply potable water, recycled water, and wastewater collection and treatment services to the DEVELOPER's Property and development thereon. However, the DISTRICT shall not be obligated to utilize public funds to subsidize the DEVELOPER's Project. The DISTRICT shall not be obligated to provide water or recycled water service in the event supplies are inadequate or nonexistent, except in accordance with its rules and regulations.
29. Preparation of This Agreement. This Agreement shall not be construed against the party preparing it, but shall be construed as if both parties prepared it.

30. Arbitration.

a. Any dispute as to the construction, interpretation or implementation of this Agreement, or any rights or obligations hereunder, shall be submitted to binding arbitration. Arbitration shall be conducted by the Judicial Arbitration and Mediation Services, Inc./Endispute, or its successor, or any other neutral, impartial arbitration service that the parties mutually agree upon in accordance with its rules in effect at the time of the commencement of the arbitration proceeding, and as set forth in this Paragraph. The arbitrator chosen must decide each and every dispute in accordance with the laws of the State of California, and all other applicable laws. The arbitrator's decision and award are subject to judicial review by a Superior Court of competent venue and jurisdiction for material errors of fact or law. Upon a showing of good cause the arbitrator may permit limited discovery in the arbitration proceeding. Unless the parties enter into a written stipulation to the contrary, prior to the appointment of the arbitrator, all disputes shall first be submitted to non-binding mediation, conducted by the Judicial Arbitration and Mediation Services, Inc./Endispute, or its successor, or any other neutral, impartial mediation service that the parties mutually agree upon in accordance with its rules for such mediation.

b. Provided, however, that after first commencing binding arbitration under subparagraph a., if a Party desires a temporary or permanent remedy which JAMS is not legally capable of providing and a state court of general jurisdiction is so capable, then that Party may elect to pursue such remedy through the state court system, but such election shall result in the entire matter being transferred to such court for all purposes and the arbitration action terminated.

[SIGNATURES TO FOLLOW ON NEXT PAGE]

IN WITNESS WHEREOF, the parties have executed is Agreement to be effective on the day and year first above written.

YUCAIPA VALLEY WATER DISTRICT

Dated: _____

By: _____

Print Name

Print Title

DEVELOPER

Dated: _____

By: _____

Print Name

Print Title

DRAFT

CAPITAL IMPROVEMENT PROJECTS

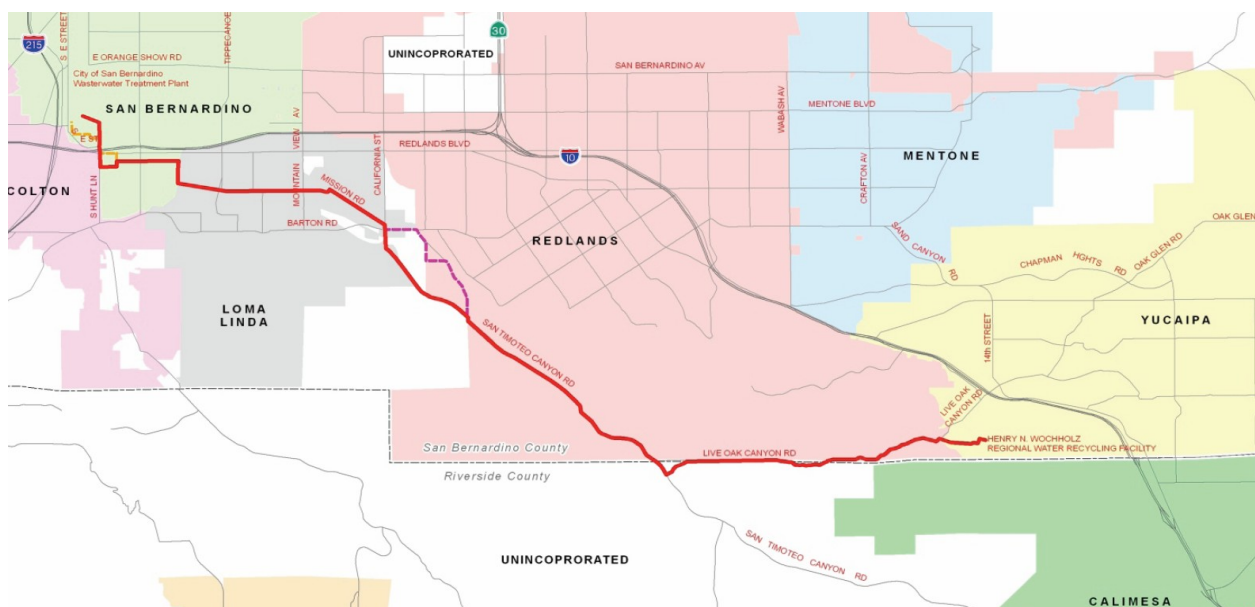
Date: February 7, 2012

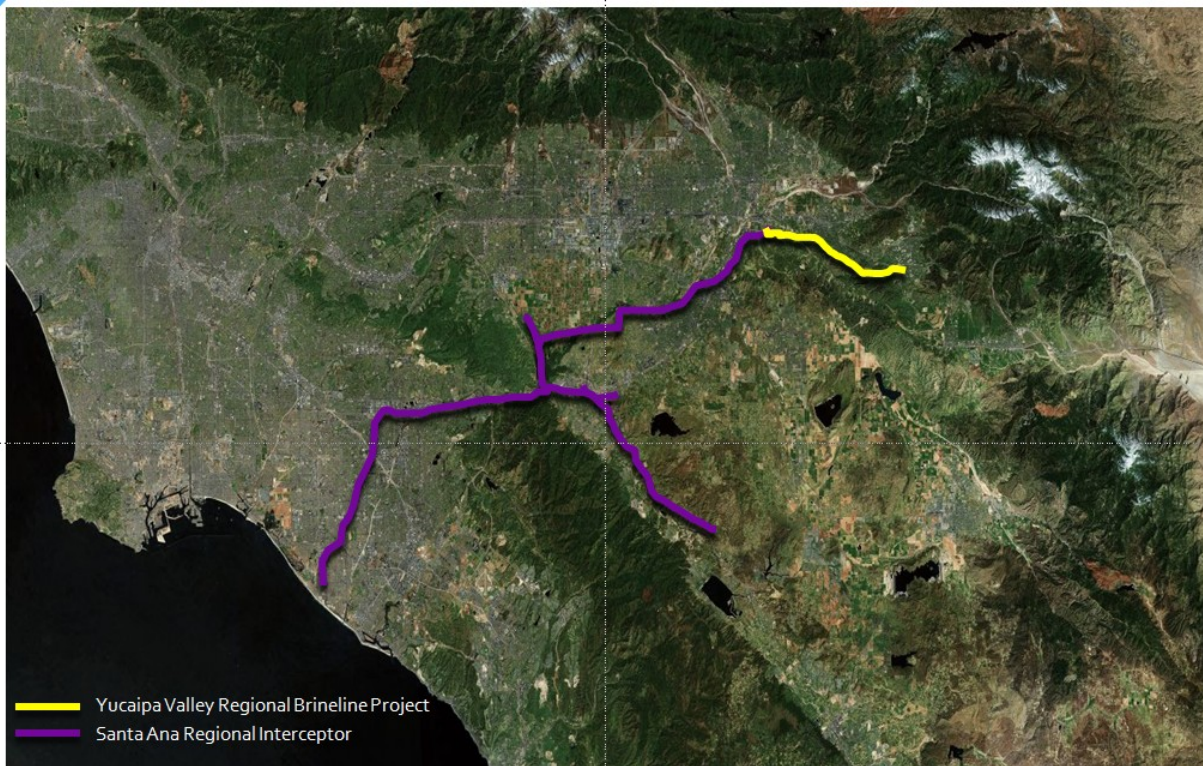
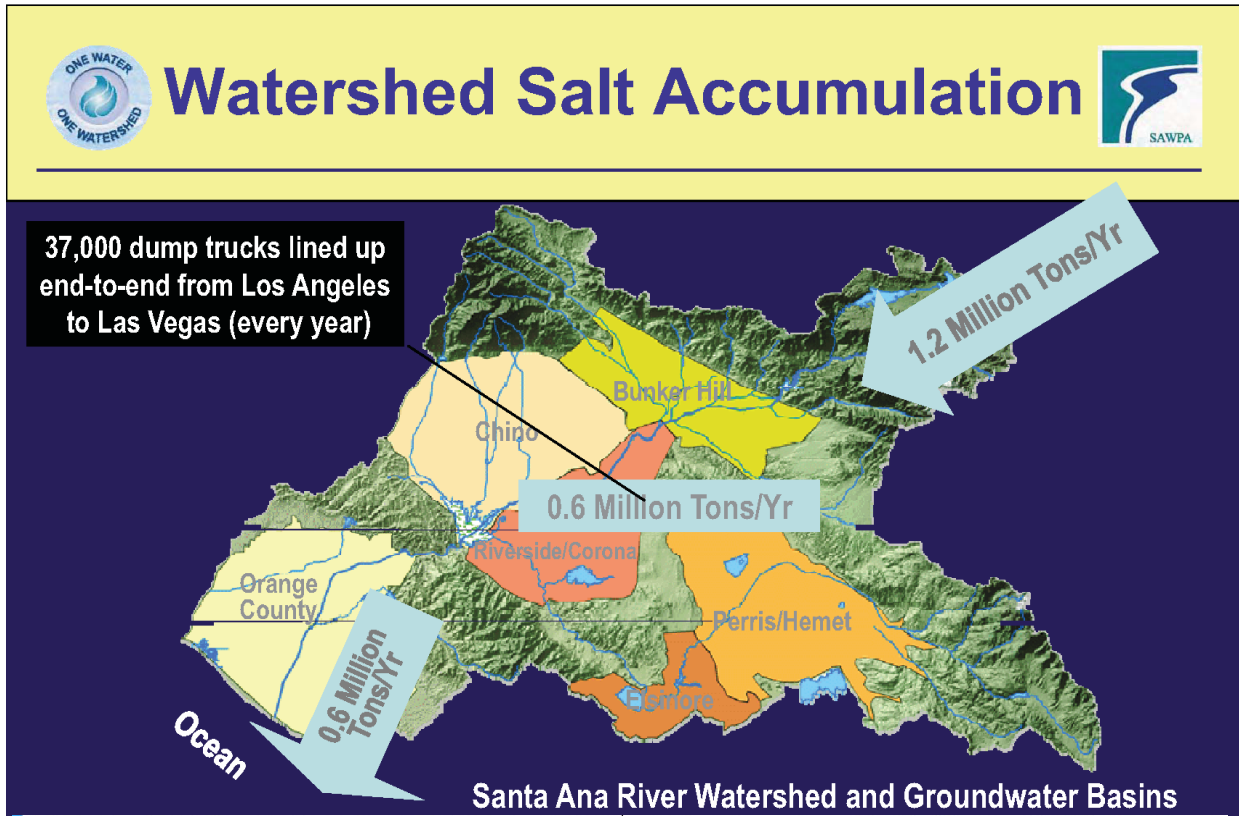
Subject: Status Report on the Construction of the Yucaipa Valley Regional Brineline

Yucaipa Valley Water District is in the process of constructing the Yucaipa Valley Regional Brineline in order to produce recycled water that complies with groundwater basin objectives as established by the Regional Water Quality Control Board. In order to comply with these limits, the District is required to add a reverse osmosis process to the wastewater treatment plant. This will enable the District to remove salts and minerals from depositing in to the groundwater basin. The proposed reverse osmosis system will produce salt water, referred to as “brine”, that must be sent to the Pacific Ocean so it does not impact any fresh water supplies downstream of the Yucaipa Valley.

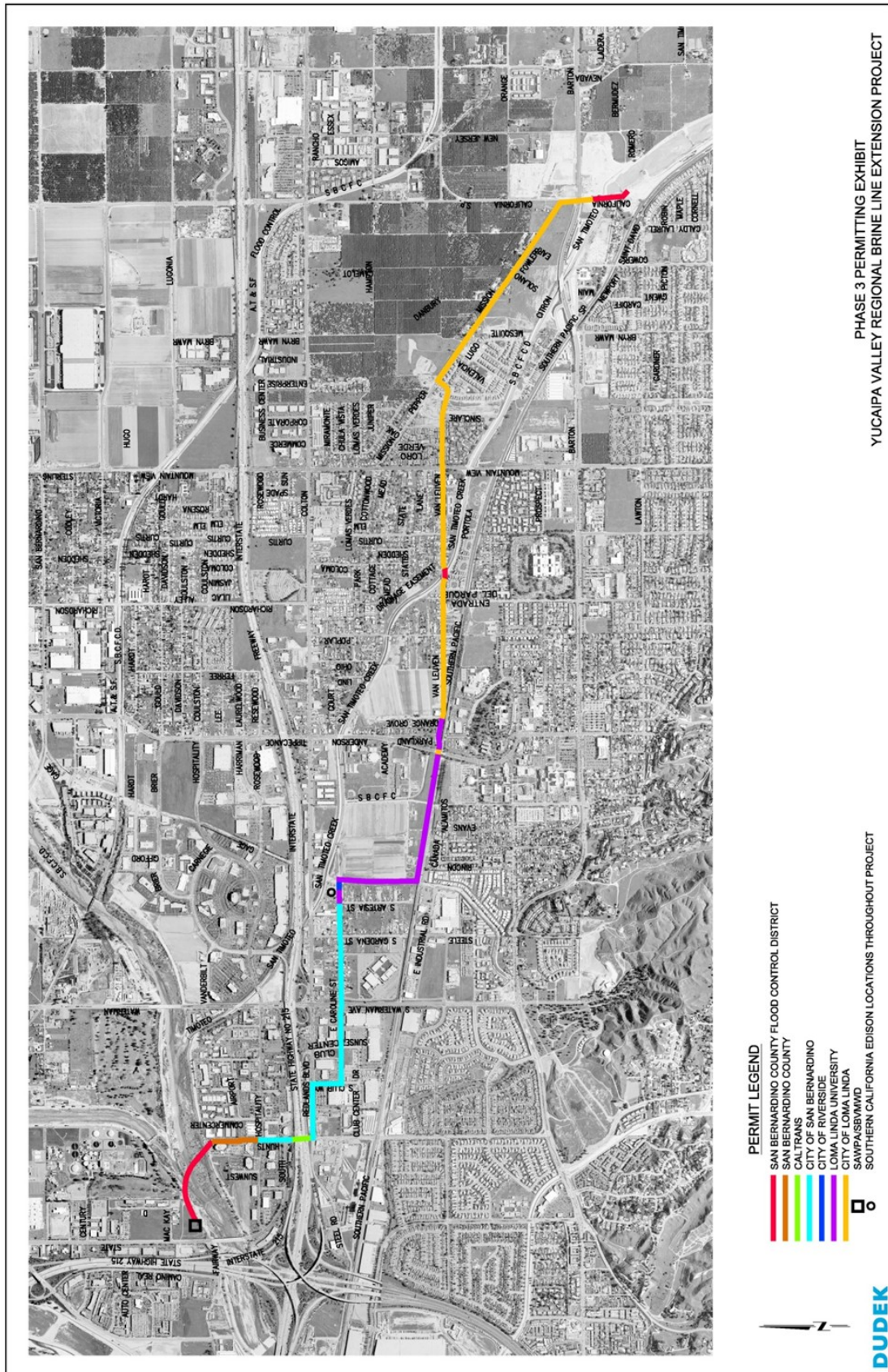
The Yucaipa Valley Regional Brineline Project consists of a 15-mile pipeline through which the District can safely and effectively dispose of the salt water produced. This pipeline will commence at the Wochholz Regional Water Recycling Facility and terminate at an existing brineline near the I-215 and I-10 Interchange. At this point the existing brineline extends another 73 miles traversing San Bernardino, Riverside and Orange counties to Orange County Sanitation District Wastewater Treatment Plant No. 2 in Huntington Beach, where the salt water is treated with domestic sewage and then sent to the ocean or reclaimed by Orange County Water District.

During this agenda item, the District staff will be providing an update of the construction status of the Yucaipa Valley Regional Brineline Project.





Yucaipa Valley Regional Water Supply Renewal Project



PHASE 3 PERMITTING EXHIBIT
YUCAIPA VALLEY REGIONAL BRINE LINE EXTENSION PROJECT

SOUTHERN CALIFORNIA EDISON LOCATIONS THROUGHOUT PROJECT



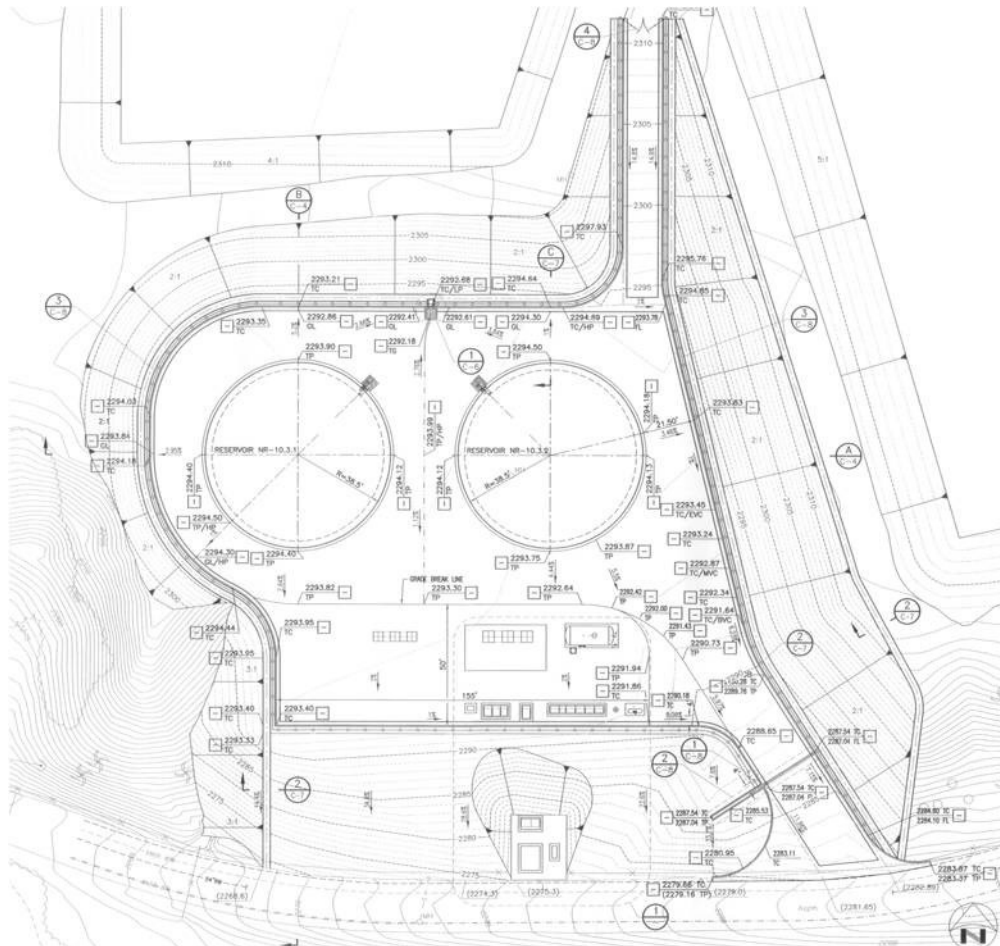


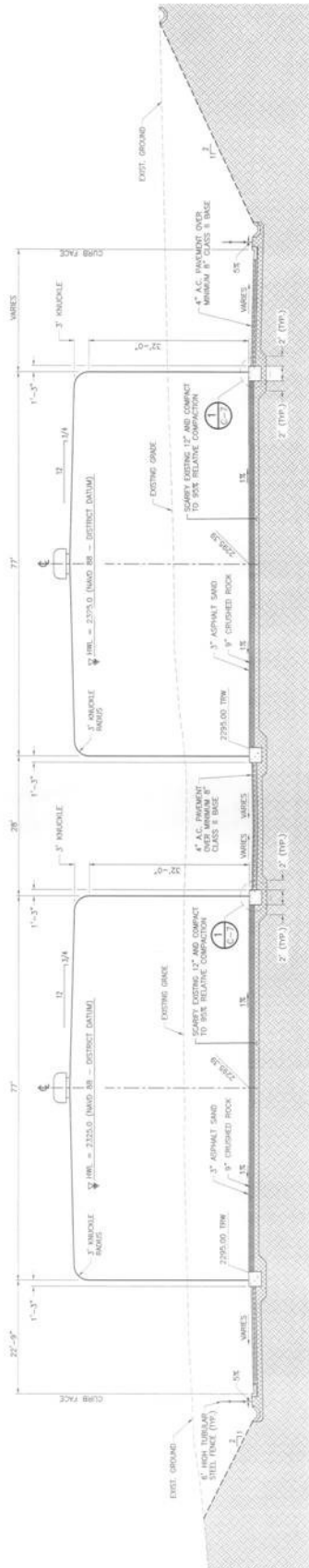
Date: February 7, 2012

Subject: Status Report on the Construction of the R-10 Recycled Water Reservoir and Booster Complex

Yucaipa Valley Water District is in the process of constructing several recycled water facilities to prepare the community for the next drought cycle. By connecting the available recycled water supply at the Wochholz Regional Water Recycling Facility to the existing recycled water system, the District will be able to immediately reduce our dependency on imported water by more than 1,000 acre feet per year. Overall, the aggressive use of recycled water is an important element in our water resource planning.

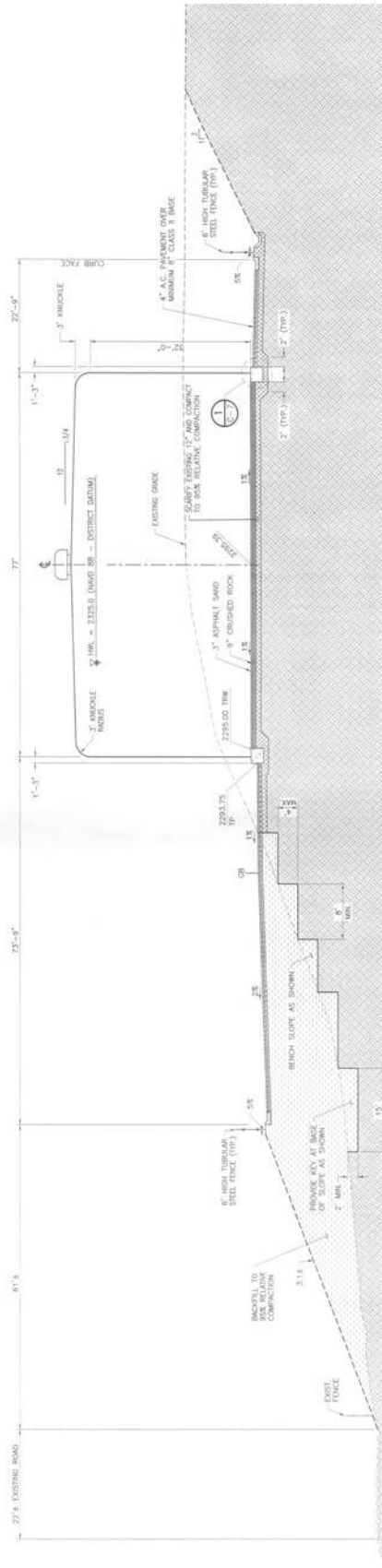
One of the projects planned for completion over the next year is the R-10 Reservoir Complex. This facility is located at the western end of County Line Road in the City of Calimesa. During this agenda item, the District staff will be providing an update of the status of this important project.





A
C-2

RESERVOIR SECTION
SCALE: 1"=10'



B
C-2

RESERVOIR SECTION
SCALE: 1"=10'



Date: February 7, 2012

Subject: Status Report on the Construction of the Crow Street Pipeline

The Yucaipa Valley Water District is in the process of constructing several recycled water facilities to prepare the community for the next drought cycle. By connecting the available recycled water supply at the Wochholz Regional Water Recycling Facility to the existing recycled water system, the District will be able to immediately reduce our dependency on imported water by more than 1,000 acre feet per year. Overall, the aggressive use of recycled water is an important element in our water resource planning.

One of the projects planned for completion over the next year is the Crow Street Pipeline. During this agenda item, the District staff will be providing an update of the status of this important project.

Date: February 7, 2012

Subject: Status Report on the Construction of the Recycled Water Booster Facility at the Reservoir R-12.1 Complex

The Yucaipa Valley Water District is in the process of constructing several recycled water facilities to prepare the community for the next drought cycle. By connecting the available recycled water supply at the Wochholz Regional Water Recycling Facility to the existing recycled water system, the District will be able to immediately reduce our dependency on imported water by more than 1,000 acre feet per year. Overall, the aggressive use of recycled water is an important element in our water resource planning.

One of the projects planned for completion over the next year is the Recycled Water Booster Facility located at the Reservoir R-12.1 Complex. During this agenda item, the District staff will be providing an update of the status of this important project.

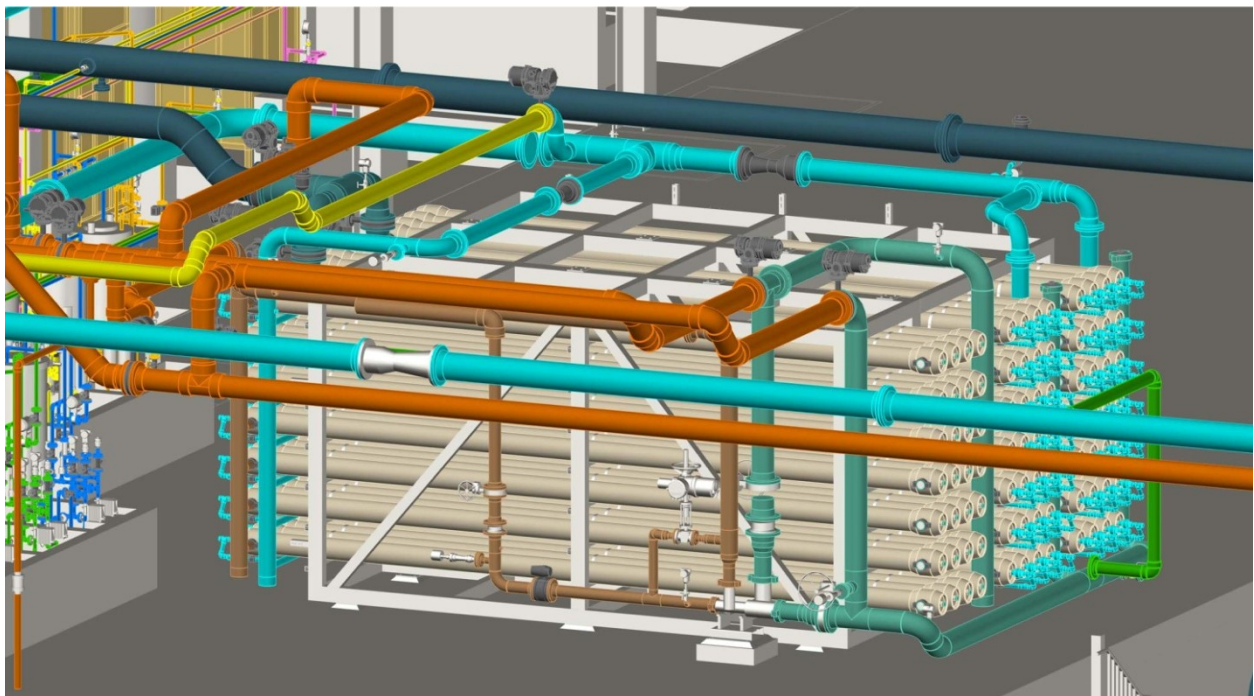


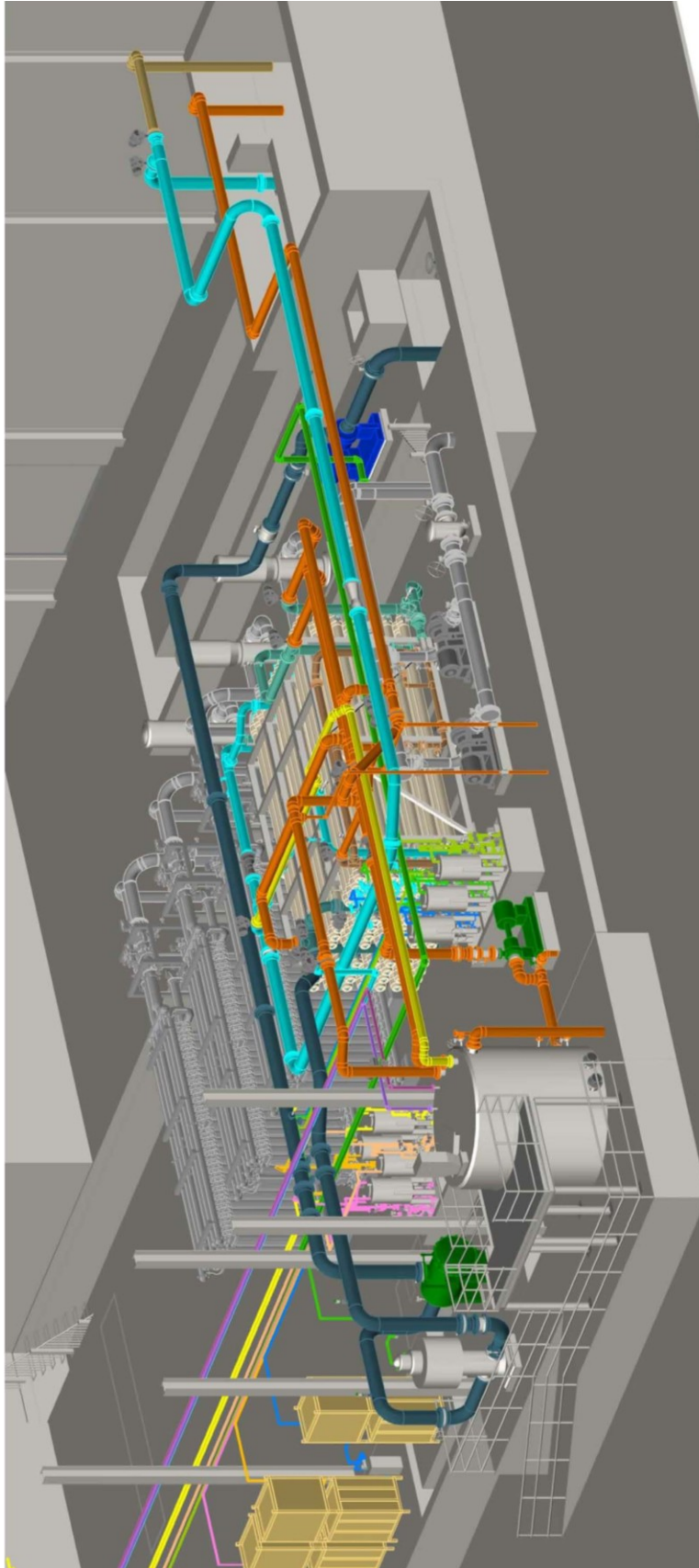
Date: February 7, 2012

Subject: Status Report on the Construction of the Wochholz Improved Salinity Effluent (WISE) Project

Yucaipa Valley Water District is in the process of constructing the Yucaipa Valley Regional Brineline in order to produce recycled water that complies with groundwater basin objectives as established by the Regional Water Quality Control Board. In order to comply with these limits, the District is required to add a reverse osmosis process to the wastewater treatment plant. This will enable the District to remove salts and minerals from depositing in to the groundwater basin. The proposed reverse osmosis system will produce salt water, referred to as “brine”, that must be sent to the Pacific Ocean so it does not impact any fresh water supplies downstream of the Yucaipa Valley.

The first phase of the reverse osmosis equipment is being designed as part of the Wochholz Improved Salinity Effluent (WISE) Project. This project is currently scheduled for the completion of the construction phase by November 2012.





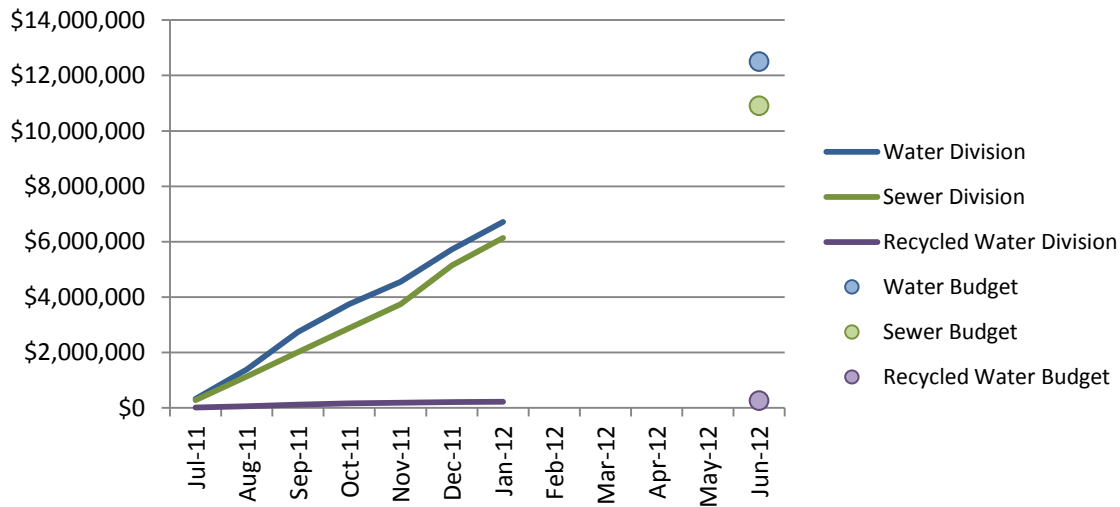
ADMINISTRATIVE ISSUES

Date: February 7, 2012

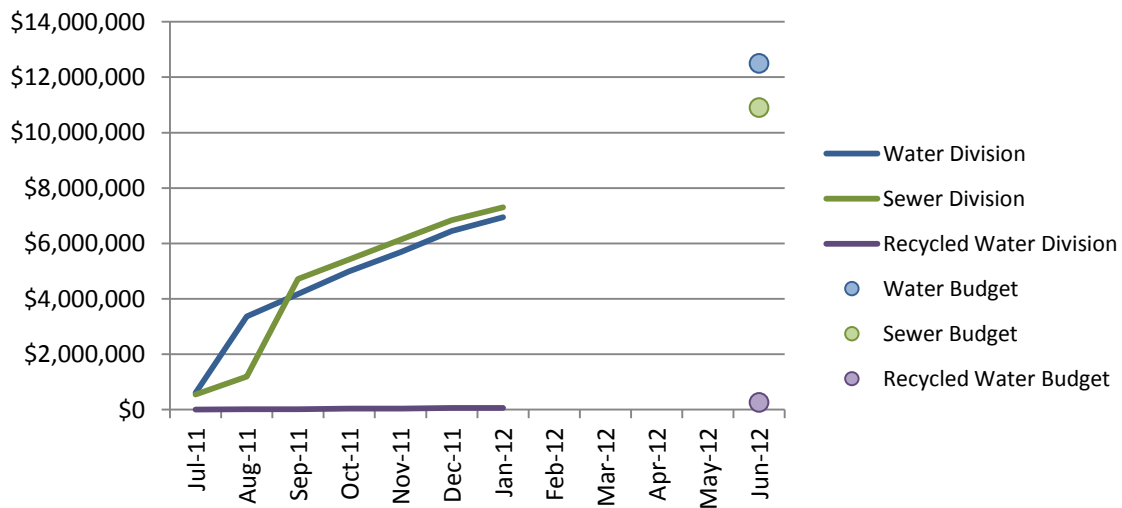
Subject: Unaudited Financial Report for December 2011

The District staff has prepared the attached Unaudited Financial Report for December 2011. A graphical summary of the financial information is provided below and detailed information follows as part of the monthly unaudited financial report.

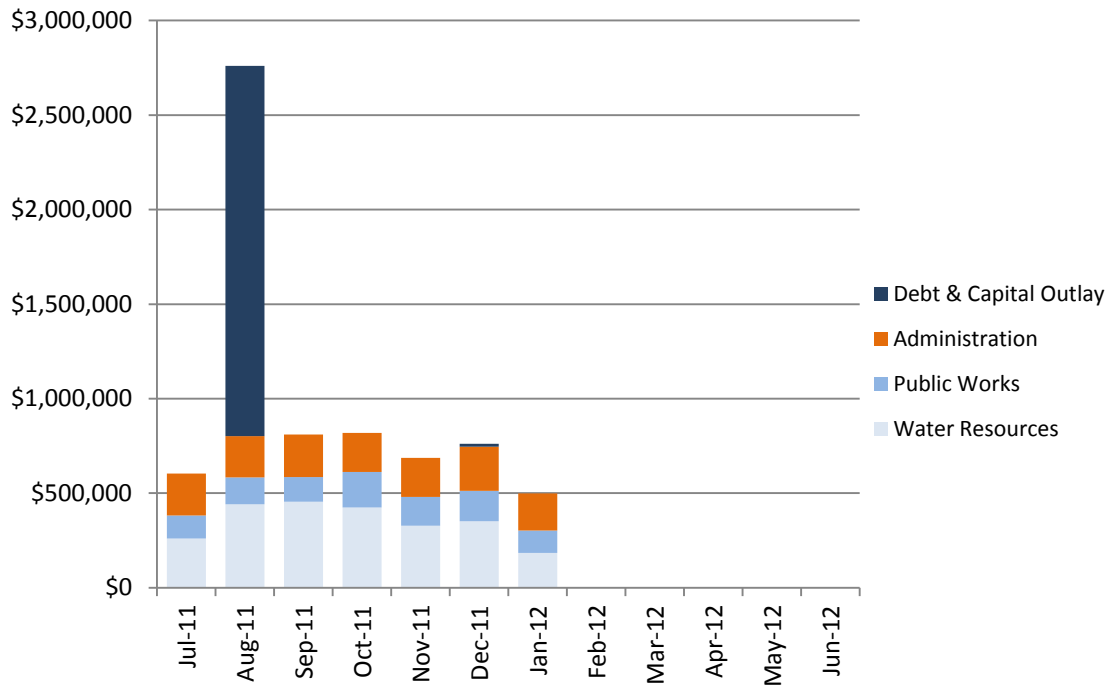
Fiscal Year 2012 Revenue & Budget Targets



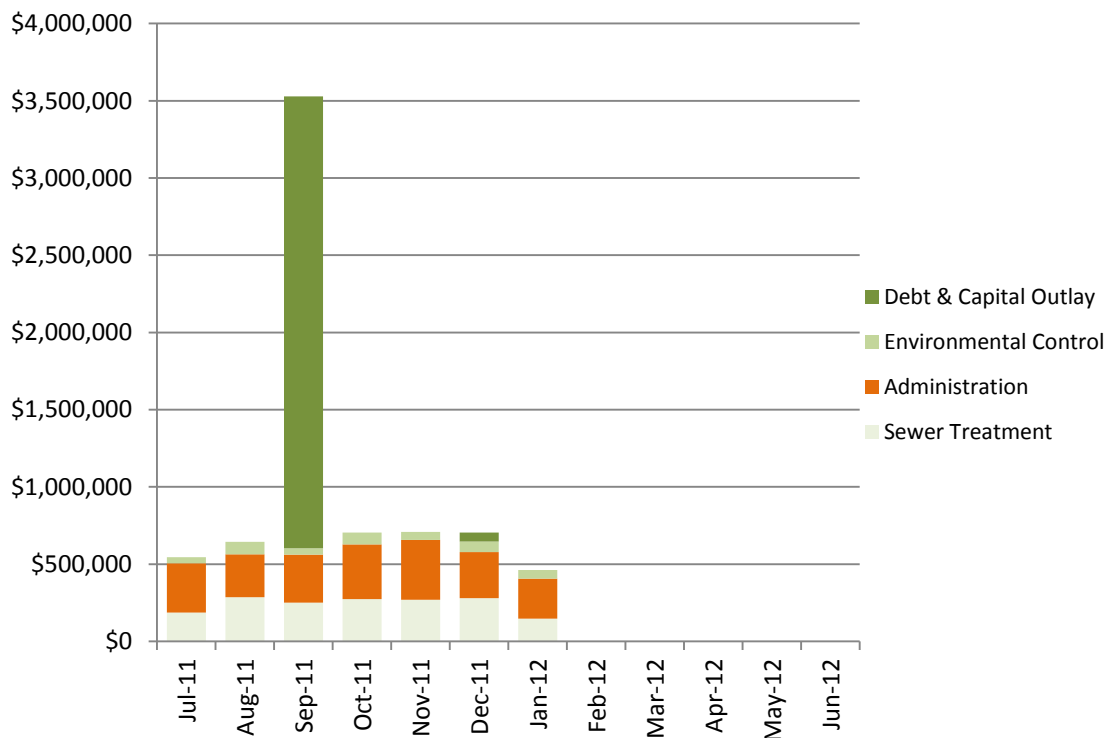
Fiscal Year 2012 Expense & Budget Targets



Water Division Monthly Expense Summary - FY 2012



Sewer Division Monthly Expense Summary - FY 2012





Director Memorandum 12-0xx

Date: February 15, 2012

Prepared By: Vicky Elisalda, Controller
Peggy Little, Administrative Supervisor

Subject: Unaudited Financial Report for the Period Ending on January 31, 2012

Recommendation: That the Board receives and files the unaudited financial report as presented.

The following unaudited financial report has been prepared by the Administrative Department for your review. The report has been divided into six sections to clearly disseminate information pertaining to the financial status of the District. Please remember that the following financial information has not been audited.

Cash Fund Balance Report

The Cash Fund Balance Report provides a summary of how the total amount of funds maintained by financial institutions is distributed throughout the enterprise and non-enterprise funds of the District. A summary of the report is as follows:

Fund Source	Operating Funds	Restricted Funds	Total Funds
Water Division	\$819,334.98	\$5,699,684.73	\$6,519,019.71
Sewer Division	(\$3,426,967.71)	\$6,535,540.14	\$3,108,572.43
Recycled Water Division	<u>(\$2,233,967.61)</u>	<u>\$687,106.80</u>	<u>(\$1,546,860.81)</u>
Total	(\$4,841,600.34)	\$12,922,331.67	\$8,080,731.33

Most of the funds reflected in the Cash Fund Balance Report are designated for specific purposes and are therefore restricted, either by law or by District policy.

Check Register

The check register lists each check processed during the month of January 2012. The District processed 250 checks during the month of January for a total sum of \$2,684,732.68. All checks are reviewed by District staff for accuracy and completeness, and usually signed by the General Manager and one Director, but may be signed by two Directors.

The Controller will make any check, invoice or supporting documentation available for review to any board member upon request.

Financial Account Information

The District currently deposits all revenue received into the Deposit Checking account. The General Checking account is used as a sole processing account for all District checks and electronic payroll. The Investment Checking account is used for the purchase and redemption of US treasury notes and bills and for the transfer of LAIF funds. The US treasury notes and bills are booked at cost.

The LAIF investment account is a pooled money account administered by the State of California. Additional information on the LAIF account is provided below in the investment summary report.

Investment Summary

The investment summary report illustrates the District's investments in US treasury notes and bills in addition to the investments held by the Local Agency Investment Fund or LAIF. The yields for the treasury notes and bills are provided for each individual transaction. The historical annual yield for funds invested with LAIF is also provided.

Separate pooled money investment reports prepared by the State of California are maintained by the District and available for review.

Monthly Revenue Allocation

During the month of January 2012 the District received a sum total of \$2,093,359.66 in revenues from the following categories:

- A total of \$1,584,940.21 was received from 15,597 customers for utility bill payments. This is the total amount of utility bill payments received from water, sewer and recycled services.
- A total of \$942.50 was received for construction meter deposits, customer deposits and internet fee payments.
- A total of \$372,490.23 was received from miscellaneous water related activities (other than utility bill charges). This total includes \$37,085.24 for Riverside property taxes, \$266,271.03 for San Bernardino property taxes and \$44,736.91 from the City of Calimesa for RDA Pass-thru funds.
- A total of \$134,986.72 was received from miscellaneous sewer related activities (other than utility bill charges). This total includes a rebate from SCE in the amount of \$134,986.72 for WWTP savings by design.
- A total of \$0.00 was received from miscellaneous recycled related activities (other than utility bill charges).
- The District received Prop 50 draw #9 in the amount of \$301,761.61 on January 4th.
- The District received ARRA draw #18 in the amount of \$381,447.00 on January 20th.
- The District received EPA draw #18 in the amount of \$42,985.80 on January 31st.

Fiscal Year 2012 Budget Status

The revenue and expense budget status for the 2012 Fiscal Year is provided for your review.

**Summary of Revenue Budget
As of January 31, 2012 (54% of Budget Cycle)**

<u>Division</u>	<u>Budget Amount</u>	<u>Current Month</u>	<u>Year-To-Date</u>	<u>Percentage</u>
Water	12,503,170	999,586	6,720,350	53.7
Sewer	10,908,600	995,716	6,140,517	56.3
Recycled Water	265,250	16,482	228,248	86.1
District Revenue	23,677,020	2,011,784	13,089,115	55.3

**Summary of Water Budget
As of January 31, 2012 (54% of Budget Cycle)**

<u>Department</u>	<u>Budget Amount</u>	<u>Current Month</u>	<u>Year-To-Date</u>	<u>Percentage</u>
Water Resources	4,359,935	184,530	2,445,909	56.1
Public works	2,147,165	118,719	1,014,658	47.3
Administration	3,028,695	195,984	1,508,093	49.8
Long Term Debt	2,932,375	0	1,934,813	66.0
Asset Acquisition	35,000	0	39,222	112.1
TOTAL	12,503,170	499,233	6,942,695	55.5

**Summary of Sewer Budget
As of January 31, 2012 (54% of Budget Cycle)**

<u>Department</u>	<u>Budget Amount</u>	<u>Current Month</u>	<u>Year-To-Date</u>	<u>Percentage</u>
Treatment	3,413,225	148,181	1,698,760	49.8
Administration	3,724,350	258,694	2,203,343	59.2
Environmental Control	824,775	56,037	416,796	50.5
Long Term Debt	2,946,250	0	2,923,669	99.2
Asset Acquisition	0	0	58,829	0.0
TOTAL	10,908,600	462,912	7,301,397	66.9

**Summary of Recycled Water Budget
As of January 31, 2012 (54% of Budget Cycle)**

<u>Department</u>	<u>Budget Amount</u>	<u>Current Month</u>	<u>Year-To-Date</u>	<u>Percentage</u>
Administration	265,250	7,830	63,887	24.1
TOTAL	265,250	7,830	63,887	24.1
District Expenses	23,677,020	969,975	14,307,979	60.4

Investment Policy Disclosure

The District is currently compliant with the portfolio of its Investment Policy and State Law.

The District is using Sandy Gage with Merrill Lynch Wealth Management (Bank of America Corporation) for Treasury investments. The District expects to meet its expenditure requirements for the next six months.

Questions or Comments

If you have any questions about a particular budget account, please do not hesitate to contact the Controller directly. If you need additional information, the members of the Administrative Department would be happy to provide you with any detailed information you may desire.

Cash Fund Balance Report - January 2012

Water Division	GL#	Balance
Project Fund - Encumbered	02-10215	\$ 720,977.22
ID 1 Construction Funds	02-10216	\$ 293,145.85
ID 2 Construction Funds	02-10217	\$ 80,409.31
Depreciation Reserves	02-10310	\$ 2,470,497.43
Infrastructure Reserves	02-10311	\$ 232,130.00
Sustainability Fund	02-10313	\$ 126,097.92
Rate Stabilization Fund	02-10314	\$ 493,209.14
Imported Water Fund - MUNI	02-10315	\$ (769,366.00)
Imported Water Fund - SGPWA	02-10316	\$ 274,429.13
FCC - Debt Service YVRWFF Phase I	02-10401	\$ 35,316.56
FCC - Future YVRWFF Phase II & III	02-10403	\$ 120,342.55
FCC - Recycled System	02-10410	\$ 186,161.84
FCC - Booster Pumping Plants	02-10411	\$ 203,084.62
FCC - Pipeline Facilities	02-10412	\$ 452,288.20
FCC - Water Storage Reservoirs	02-10413	\$ 780,960.96
Operating Funds:	--	--
Checking Account	02-11001	\$ 30,000.00
LAIF	02-11019	\$ 6,636,123.21
Savings	02-11020	\$ (5,846,788.23)
Total Water Division		\$ 6,519,019.71

Sewer Division	GL#	Balance
Project Fund - Encumbered	03-10215	\$ 751,424.20
Depreciation Reserves	03-10310	\$ 2,908,230.31
Infrastructure Reserves	03-10311	\$ 458,675.00
Rate Stabilization Fund	03-10314	\$ 1,464,313.38
FCC - Debt Service WWTP Expansion & Upgrade	03-10405	\$ 52,619.99
FCC - Future WWTP Expansion	03-10407	\$ 274,457.32
FCC - Sewer Interceptors	03-10415	\$ 136,814.51
FCC - Lift Stations	03-10416	\$ 67,513.56
FCC - Effluent Disposal Facilities	03-10417	\$ 88,937.96
FCC - Salt Mitigation Facilities	03-10418	\$ 332,553.91
Operating Funds:	--	--
Savings	03-11020	\$ (3,426,967.71)
Total Wastewater Division		\$ 3,108,572.43

Recycled Water Division	GL#	Balance
Depreciation Reserves	04-10310	\$ 480,638.00
Infrastructure Reserves	04-10311	\$ 30,870.00
FCC - Recycled System	04-10410	\$ 14,948.78
FCC - Booster Pumping Plants	04-10411	\$ 16,085.99
FCC - Pipeline Facilities	04-10412	\$ 80,051.54
FCC - Water Storage Reservoirs	04-10413	\$ 64,512.49
Operating Funds:	--	--
Savings	04-11020	\$ (2,233,967.61)
Total Recycled Water Division		\$ (1,546,860.81)

DISTRICT TOTAL **\$ 8,080,731.33**

Future Obligations	Due Date	Amount
2004A Bond Payment - Water Division	02/23/2012	\$ 997,562.50
SBVMWD - SARI Pipeline Capacity (FINAL Payment)	06/01/2012	\$ 19,710.00
2004A Bond Payment - Water Division	08/27/2012	\$ 1,952,562.50
SRF Payment - Sewer Division	09/10/2012	\$ 2,923,688.75

Check Register - January 2012

<u>Check Date</u>	<u>Check Number</u>	<u>Name</u>	<u>Check Amount</u>
01/03/2012	14119	Ameripride Uniform Services	450.01
01/03/2012	14120	Fedex	29.69
01/03/2012	14121	House Of Quality, Parts Plus	3,322.22
01/03/2012	14122	VOID CHECK	0.00
01/03/2012	14123	Kelly Services, Inc.	469.60
01/03/2012	14124	Konica Minolta Business Soluti	303.76
01/03/2012	14125	South Coast A.Q.M.D.	1,136.38
01/03/2012	14126	The Gas Company	457.91
01/03/2012	14127	Verizon	932.23
01/03/2012	14128	Auto Care Clinic	6,557.41
01/03/2012	14129	Calolympic Glove & Safety Co.,	372.08
01/03/2012	14130	Center Electric	6,901.02
01/03/2012	14131	Fisher Scientific Co.	1,545.68
01/03/2012	14132	Grainger	1,158.09
01/03/2012	14133	Graybar Electric Co., Inc.	71.99
01/03/2012	14134	Inland Water Works Supply Co.	11,904.01
01/03/2012	14135	JR Freeman Co. Inc.	169.52
01/03/2012	14136	Merit Oil Company	1,660.68
01/03/2012	14137	Microflex Corp #774353	968.80
01/03/2012	14138	Nagem, Inc.	4,824.44
01/03/2012	14139	NCL Of Wisconsin Inc	295.68
01/03/2012	14140	Oily's Automotive Service & Re	588.00
01/03/2012	14141	Pro-Pipe & Supply, Inc.	12.00
01/03/2012	14142	R & R Anderson Trucking	1,020.32
01/03/2012	14143	Test America Laboratories, Inc	255.00
01/03/2012	14144	Addiction Medicine Consultants	49.50
01/03/2012	14145	Matthew Flordelis	50.00
01/09/2012	14146	American Water Works Assoc.	1,770.00
01/09/2012	14147	Rodd Greene	370.21
01/09/2012	14148	UnitedHealthcare of California	38,056.79
01/09/2012	14149	Gregory N. Godwin	198.72
01/09/2012	14150	Standard Insurance Company	2,221.36
01/09/2012	14151	US Healthworks Medical Group,	226.91
01/09/2012	14152	Western Dental Services, Inc.	314.33
01/09/2012	14153	Anthem Blue Cross L and H	338.00
01/09/2012	14154	Standard Insurance Company	2,755.25
01/09/2012	14155	Standard Insurance Vision Plan	415.60
01/09/2012	14156	MetLife Small Business Center	122.58
01/09/2012	14157	AWWA CA-NV (Rancho Cucamonga)	190.00
01/09/2012	14158	CA-OCP HEALTH SERVICES	60.00
01/09/2012	14159	National Notary Association	275.00
01/09/2012	14160	Ralph C. Casas	42.00
01/09/2012	14161	Ameripride Uniform Services	443.65
01/09/2012	14162	Applied Best Practices, LLC	58.50
01/09/2012	14163	Central Communications	271.35
01/09/2012	14164	Steve Hines No.1, LLC	8,027.00
01/09/2012	14165	Crown Ace Hardware - Yucaipa	524.43
01/09/2012	14166	First American Data Tree, LLC	50.00
01/09/2012	14167	Fedex	60.53
01/09/2012	14168	InfoSend, Inc.	5,111.45
01/09/2012	14169	Jean's Flower Basket	70.04
01/09/2012	14170	Kelly Services, Inc.	469.60
01/09/2012	14171	Konica Minolta Business Soluti	25.00
01/09/2012	14172	Krieger & Stewart	12,964.99
01/09/2012	14173	Leroy's Landscape Services	2,955.00

Check Register - January 2012

<u>Check Date</u>	<u>Check Number</u>	<u>Name</u>	<u>Check Amount</u>
01/09/2012	14174	NAPA Genuine Parts Company	188.54
01/09/2012	14175	NetComp Technologies, Inc.	675.00
01/09/2012	14176	Sims Welding & Supply Co., Inc	158.45
01/09/2012	14177	The Counseling Team Internatio	660.00
01/09/2012	14178	The Gas Company	606.12
01/09/2012	14179	Underground Service Alert Of S	130.50
01/09/2012	14180	George F. Siddle	115.25
01/09/2012	14181	Verizon	683.08
01/09/2012	14182	Yucaipa Disposal, Inc.	1,262.31
01/09/2012	14183	Auto Care Clinic	499.55
01/09/2012	14184	Brenntag Pacific, Inc	12,967.71
01/09/2012	14185	Jeanntte Wisdom	15,025.00
01/09/2012	14186	Cal's Auto Repair & Towing	40.00
01/09/2012	14187	Case Dealer Holding Co., LLC	48.54
01/09/2012	14188	Cemex Inc. USA	1,298.81
01/09/2012	14189	Victor James Valenti	8,074.68
01/09/2012	14190	Environmental Systems Research	23,822.29
01/09/2012	14191	Graybar Electric Co., Inc.	13.68
01/09/2012	14192	Hach Company	1,532.66
01/09/2012	14193	Hemet Valley Tool & Supply	363.72
01/09/2012	14194	Hewlett-Packard Co.-Public Sec	3,942.14
01/09/2012	14195	Inland Water Works Supply Co.	154.79
01/09/2012	14196	Innerline Engineering	5,075.00
01/09/2012	14197	James John Brothers	15,253.55
01/09/2012	14198	JR Freeman Co. Inc.	253.51
01/09/2012	14199	Leroy's Landscape Services	1,385.00
01/09/2012	14200	Matich Corp	2,048.59
01/09/2012	14201	Merit Oil Company	2,854.50
01/09/2012	14202	Mark Miller	186.00
01/09/2012	14203	Nagem, Inc.	3,909.96
01/09/2012	14204	Optics Planet, Inc.	339.98
01/09/2012	14205	Q Versa, LLC	8,378.19
01/09/2012	14206	PowerPlan	100.95
01/09/2012	14207	Red Alert Special Couriers	1,075.42
01/09/2012	14208	Rosemount Analytical, Inc.	589.55
01/09/2012	14209	SB & Riv Counties Fire Equipme	347.70
01/09/2012	14210	Schaner's WasteWater Prod., In	2,470.46
01/09/2012	14211	Donald Kent Stone	480.00
01/13/2012	14212	PAYROLL CHECK	2,105.55
01/13/2012	14213	PAYROLL CHECK	297.53
01/13/2012	14214	CA-PERS 457 Deferred Comp	13,674.64
01/13/2012	14215	Public Employees' Retirement S	26,612.52
01/13/2012	14216	Hong Nelson	125.00
01/13/2012	14217	Katherine Kostelecky	500.00
01/13/2012	14218	United Student Aid Funds, Inc.	168.43
01/13/2012	14219	IBEW Local 1436	345.00
01/13/2012	14220	Franchise Tax Board	150.00
01/17/2012	14221	San Bdn. Valley Muni. Water D	649,379.60
01/17/2012	14222	ADS, LLC	58,828.66
01/17/2012	14223	Aklufi & Wysocki	6,792.50
01/17/2012	14224	California Bank & Trust	102,525.60
01/17/2012	14225	Delta Partners, LLC	7,500.00
01/17/2012	14226	Dudek & Associates, Inc	57,830.26
01/17/2012	14227	Inland Potable Services, Inc.	33,340.00
01/17/2012	14228	Krieger & Stewart	110,574.09

Check Register - January 2012

<u>Check Date</u>	<u>Check Number</u>	<u>Name</u>	<u>Check Amount</u>
01/17/2012	14229	One Stop Landscape Supply Inc	27,084.00
01/17/2012	14230	Platinum Advisors, LLC	5,000.00
01/17/2012	14231	RMC Water and Environment	11,405.00
01/17/2012	14232	Separation Processes, Inc.	68,754.35
01/17/2012	14233	W.A. Rasic Construction Co., I	922,730.41
01/17/2012	14234	ADS, LLC	2,634.00
01/17/2012	14235	Ameripride Uniform Services	432.21
01/17/2012	14236	Corelogic Information Solution	300.00
01/17/2012	14237	Coverall North America, Inc.	1,021.00
01/17/2012	14238	Environmental Systems Research	500.00
01/17/2012	14239	Kelly Services, Inc.	399.16
01/17/2012	14240	Matthew Bender & Co., Inc.	151.86
01/17/2012	14241	NetComp Technologies, Inc.	1,493.72
01/17/2012	14242	Southern CA Emergency Medicine	75.00
01/17/2012	14243	Association of San Bernardino	175.00
01/17/2012	14244	Troy Alarm, Inc.	201.00
01/17/2012	14245	UPS Store#1504/ Mail Boxes Etc	19.06
01/17/2012	14246	Verizon	1,165.07
01/17/2012	14247	Vision Internet Providers, Inc	90.45
01/17/2012	14248	Bernell Hydraulics, Inc.	141.04
01/17/2012	14249	Brenntag Pacific, Inc	6,321.64
01/17/2012	14250	David Sunden	1,530.35
01/17/2012	14251	Edward S Babcock & Sons, Inc.	1,365.00
01/17/2012	14252	Fastenal Company	106.09
01/17/2012	14253	G&G Environmental Compliance, I	7,484.16
01/17/2012	14254	Grainger	147.08
01/17/2012	14255	Hach Company	452.16
01/17/2012	14256	Industrial Fabricators	420.00
01/17/2012	14257	J.L. Wingert Co.	2,325.53
01/17/2012	14258	KAD Paving Company	640.00
01/17/2012	14259	Harold J. Cossette	5,715.06
01/17/2012	14260	Merit Oil Company	1,991.68
01/17/2012	14261	Safeguard Business Systems Inc	458.04
01/17/2012	14262	The Lab Depot, Inc.	126.00
01/17/2012	14263	Edward S Babcock & Sons, Inc.	358.00
01/17/2012	14264	San Gorgonio Pass Water Agency	2,595.60
01/18/2012	14265	RIAD, MAMDOUH	21.65
01/23/2012	14266	Ameripride Uniform Services	433.01
01/23/2012	14267	AT&T Mobility	2,034.19
01/23/2012	14268	Fedex	55.09
01/23/2012	14269	Incode Division-Tyler Technolo	350.00
01/23/2012	14270	InfoSend, Inc.	3,435.21
01/23/2012	14271	Kelly Services, Inc.	368.59
01/23/2012	14272	NetComp Technologies, Inc.	2,141.81
01/23/2012	14273	Northrop Gruman-IS	2,731.00
01/23/2012	14274	SB CNTY-Land Use	115.00
01/23/2012	14275	Separation Processes, Inc.	2,227.50
01/23/2012	14276	Association of San Bernardino	200.00
01/23/2012	14277	Tattletale Portable Alarm Syst	1,974.00
01/23/2012	14278	Tokay Software	270.00
01/23/2012	14279	U.S. Postal Service	2,000.00
01/23/2012	14280	Verizon	161.72
01/23/2012	14281	Auto Care Clinic	1,546.36
01/23/2012	14282	BofA Credit Card	34.46
01/23/2012	14283	Bernell Hydraulics, Inc.	881.65

Check Register - January 2012

<u>Check Date</u>	<u>Check Number</u>	<u>Name</u>	<u>Check Amount</u>
01/23/2012	14284	Brenntag Pacific, Inc	8,702.76
01/23/2012	14285	Cal's Auto Repair & Towing	100.00
01/23/2012	14286	Calolympic Glove & Safety Co.,	681.46
01/23/2012	14287	Clinical Laboratory of San Ber	1,263.00
01/23/2012	14288	VOID CHECK	0.00
01/23/2012	14289	Fastenal Company	369.31
01/23/2012	14290	Grainger	836.95
01/23/2012	14291	Hach Company	474.04
01/23/2012	14292	Inland Water Works Supply Co.	1,805.69
01/23/2012	14293	Innerline Engineering	4,350.00
01/23/2012	14294	Inplant Sales LLC	62.94
01/23/2012	14295	Jon's Flags & Poles	400.83
01/23/2012	14296	JR Freeman Co. Inc.	240.22
01/23/2012	14297	KV'S Paint & Decorating Center	242.17
01/23/2012	14298	Leroy's Landscape Services	580.00
01/23/2012	14299	Merit Oil Company	2,725.02
01/23/2012	14300	Mark Miller	439.00
01/23/2012	14301	MCP Industries	1,742.94
01/23/2012	14302	Nagem, Inc.	6,097.28
01/23/2012	14303	NCL Of Wisconsin Inc	45.88
01/23/2012	14304	Oily's Automotive Service & Re	1,202.07
01/23/2012	14305	P & R Paper Supply Co., Inc.	252.91
01/23/2012	14306	Radioshack Corp.	20.45
01/23/2012	14307	Red Alert Special Couriers	1,373.68
01/23/2012	14308	RF Valves, Inc.	522.81
01/23/2012	14309	Roquet Paving Inc	14,710.00
01/23/2012	14310	VOID CHECK	0.00
01/23/2012	14311	Siemens Industry, Inc.	1,142.62
01/23/2012	14312	Smart & Final Stores, LLC	244.04
01/23/2012	14313	Southwest Concrete Products	733.56
01/23/2012	14314	Test America Laboratories, Inc	1,080.00
01/23/2012	14315	The Lab Depot, Inc.	153.78
01/23/2012	14316	HD Supply Facilities Maintenan	1,250.93
01/23/2012	14317	BofA Credit Card	1,305.64
01/23/2012	14318	San Bernardino County Flood Co	1,977.00
01/27/2012	14319	PAYROLL CHECK	1,886.27
01/27/2012	14320	CA-PERS 457 Deferred Comp	10,980.10
01/27/2012	14321	Public Employees' Retirement S	26,800.75
01/27/2012	14322	Hong Nelson	125.00
01/27/2012	14323	Katherine Kostelecky	500.00
01/27/2012	14324	United Student Aid Funds, Inc.	168.43
01/27/2012	14325	Franchise Tax Board	150.00
01/30/2012	14326	AWWA CA-NV (Rancho Cucamonga)	45.00
01/30/2012	14327	CA-OCP HEALTH SERVICES	70.00
01/30/2012	14328	State Water Resources Control	95.00
01/30/2012	14329	Ralph C. Casas	35.00
01/30/2012	14330	Ameripride Uniform Services	454.04
01/30/2012	14331	BofA Credit Card	683.01
01/30/2012	14332	InfoSend, Inc.	1,773.51
01/30/2012	14333	Kelly Services, Inc.	451.82
01/30/2012	14334	Konica Minolta Business Soluti	348.93
01/30/2012	14335	San Bernardino County Flood Co	22,605.00
01/30/2012	14336	Verizon	2,122.62
01/30/2012	14337	All American Sewer Tools	3,499.96
01/30/2012	14338	Bernell Hydraulics, Inc.	84.41

Check Register - January 2012

<u>Check Date</u>	<u>Check Number</u>	<u>Name</u>	<u>Check Amount</u>
01/30/2012	14339	Brenntag Pacific, Inc	3,209.33
01/30/2012	14340	Calolympic Glove & Safety Co.,	46.60
01/30/2012	14341	Evergreen Oil, Inc.	213.75
01/30/2012	14342	Fastenal Company	527.48
01/30/2012	14343	Frost Company	16,058.00
01/30/2012	14344	Grainger	605.12
01/30/2012	14345	Graybar Electric Co., Inc.	248.67
01/30/2012	14346	Alan L. Grubel Automotive Inc.	403.63
01/30/2012	14347	Inland Water Works Supply Co.	934.03
01/30/2012	14348	JR Freeman Co. Inc.	1,093.38
01/30/2012	14349	King Lee Chemical, Co.	9,799.86
01/30/2012	14350	MBC Applied Environmental Scie	1,200.00
01/30/2012	14351	Merit Oil Company	1,857.39
01/30/2012	14352	Nagem, Inc.	2,325.00
01/30/2012	14353	Oily's Automotive Service & Re	585.00
01/30/2012	14354	P & R Paper Supply Co., Inc.	363.02
01/30/2012	14355	Pacific States Cast Iron Pipe	75,646.09
01/30/2012	14356	Pall Advanced Separations Syst	23.71
01/30/2012	14357	Polydyne Inc.	2,602.16
01/30/2012	14358	R & R Anderson Trucking	1,012.87
01/30/2012	14359	Utility Services Associates LL	10,477.00
01/30/2012	14360	American Family Life Assurance	2,843.01
01/30/2012	14361	AWWA CA-NV (Rancho Cucamonga)	175.00
01/30/2012	14362	Boot Barn #4	150.00
01/30/2012	14363	CWEA/SSCSC	270.00
01/30/2012	14364	YVWD-Petty Cash	125.20
01/30/2012	14365	Gregory N. Godwin	198.72
01/30/2012	14366	Watereuse Association	850.00
01/30/2012	14367	SeaBright Insurance Company	12,237.00
01/30/2012	14368	SkillPath Seminars	199.00
January 2012 Check Register Total			2,684,732.68

Financial Account Information - January 2012

DATE	DESCRIPTION	Deposit Checking	General Checking	Investment Checking	Treasuries at cost	LAIF Invest. Fund	TOTAL ACTIVITY
12/31/2011	bal forward	510,345.41	30,000.00	76,101.90	1,700,678.16	5,933,500.93	8,250,626.40
12/31	rev retained in MM				(978.97)		(978.97)
01/03/2012	Deposit	71,042.84					71,042.84
	Fraud return -CC	(101.14)					(101.14)
	Credit Card-12/30	75.93					75.93
	Credit Card-1/3	4,003.75					4,003.75
	Electronic	18,104.34					18,104.34
	Website-1/3	2,092.56					2,092.56
	Website-1/4	274.78					274.78
	ETS Fees	(757.22)					(757.22)
	ETS Fees	(722.64)					(722.64)
	ACH pmts	29,941.12					29,941.12
	Cks#14119-14145		(45,506.02)				(45,506.02)
	TRF#1063-AP	(45,506.02)	45,506.02				0.00
01/04/2012	Deposit	78,836.18					78,836.18
	Credit Card-1/3	1,011.64					1,011.64
	Credit Card-1/4	7,012.82					7,012.82
	Electronic	31,722.76					31,722.76
	Website-1/4	1,613.81					1,613.81
	Website-1/5	393.82					393.82
01/05/2012	Deposit	32,906.72					32,906.72
1/4	Prop 50 - Invoice #9		301,761.61				301,761.61
	TRF#1064-Prop 50 inv #9	301,761.61	(301,761.61)				0.00
	TRF#1065	(700,000.00)		700,000.00			0.00
	TRF#1066			(700,000.00)		700,000.00	0.00
	Credit Card-1/4	429.84					429.84
	Credit Card-1/5	1,338.73					1,338.73
	Electronic	15,328.94					15,328.94
	Website-1/5	2,565.94					2,565.94
	Website-1/6	612.01					612.01
01/06/2012	Deposit	43,920.33					43,920.33
	Credit Card-1/5	124.70					124.70
	Credit Card-1/6	1,662.31					1,662.31
	Electronic	12,930.67					12,930.67
	Website-1/6	1,529.23					1,529.23
	Website-1/7	1,540.46					1,540.46
	Website-1/8	1,213.00					1,213.00
	Website-1/9	358.60					358.60
01/09/2012	Deposit	92,014.59					92,014.59
	Credit Card-1/6	218.38					218.38
	Credit Card-1/9	4,116.06					4,116.06
	Electronic	15,551.93					15,551.93
	Website-1/9	1,004.57					1,004.57
	Website-1/10	447.80					447.80
01/10/2012	Deposit	50,308.88					50,308.88
	Deposit-M/C	9,257.85					9,257.85
	Credit Card-1/9	437.01					437.01
	Credit Card-1/10	2,163.20					2,163.20
	Electronic	14,104.27					14,104.27
	Website-1/10	1,379.85					1,379.85
	Website-1/11	63.94					63.94
	ACH pmts	44,433.14					44,433.14
01/11/2012	Deposit	32,393.20					32,393.20
MC dep	SCE Rebate-sav by design	134,986.72					134,986.72

Financial Account Information - January 2012

DATE	DESCRIPTION	Deposit Checking	General Checking	Investment Checking	Treasuries at cost	LAIF Invest. Fund	TOTAL ACTIVITY
12/31/2011	bal forward	510,345.41	30,000.00	76,101.90	1,700,678.16	5,933,500.93	8,250,626.40
	MC dep Calimesa Pass Trus FY 10-11	44,736.91					44,736.91
	Credit Card-1/10	540.40					540.40
	Credit Card-1/11	3,156.15					3,156.15
	Electronic	8,534.67					8,534.67
	Website-1/11	1,847.77					1,847.77
01/13/12-PR	Federal Taxes		(36,364.86)				(36,364.86)
01/13/12-PR	State Taxes		(6,356.63)				(6,356.63)
01/13/12-PR	ING 457		(7,530.61)				(7,530.61)
01/13/12-PR	PR Direct Deposit		(100,472.63)				(100,472.63)
	Cks#14146-14220		(239,378.14)				(239,378.14)
	TRF#1067-AP&PR	(390,102.87)	390,102.87				0.00
01/12/2012	Deposit	46,091.56					46,091.56
	Credit Card-1/12	2,072.52					2,072.52
	Electronic	9,079.79					9,079.79
	Website-1/12	1,033.60					1,033.60
	Website-1/13	449.93					449.93
01/13/2012	Deposit	40,308.32					40,308.32
	Deposit-SB taxes	233,597.00					233,597.00
	Deposit-SB taxes	15,290.19					15,290.19
	Deposit-Riv taxes	714.89					714.89
	Credit Card-1/12	574.92					574.92
	Credit Card-1/13	3,147.63					3,147.63
	Electronic	15,683.26					15,683.26
	Website-1/13	977.85					977.85
	Website-1/14	6,488.60					6,488.60
	Website-1/15	704.57					704.57
	Website-1/16	1,091.10					1,091.10
	Website-1/17	323.17					323.17
	LAIF Quarterly Interest					2,622.28	2,622.28
01/17/2012	Deposit	74,312.40					74,312.40
	Credit Card-1/13	850.14					850.14
	Credit Card-1/17	5,009.09					5,009.09
	Electronic	14,143.17					14,143.17
	Website-1/17	1,945.35					1,945.35
	Website-1/18	479.16					479.16
	ACH pmts	37,740.02					37,740.02
	Quarterly Analysis Charge			(6,983.38)			(6,983.38)
01/18/2012	Deposit	77,279.38					77,279.38
	Credit Card-1/17	774.49					774.49
	Credit Card-1/18	4,353.67					4,353.67
	Electronic	22,570.32					22,570.32
	Website-1/18	1,561.31					1,561.31
	Website-1/19	176.12					176.12
	Cks#14221-14265		(2,102,601.08)				(2,102,601.08)
1/20	TRF#1068-treas maturity			1,200,000.00			1,200,000.00
	TRF#1069-Inv Ck to Dep Ck	1,200,000.00		(1,200,000.00)			0.00
	TRF#1070-AP	(2,102,601.08)	2,102,601.08				0.00
01/19/2012	Deposit	55,400.16					55,400.16
	Credit Card-1/18	1,892.51					1,892.51
	Credit Card-1/19	1,208.20					1,208.20
	Electronic	11,511.12					11,511.12
	Website-1/19	850.94					850.94
	Website-1/20	228.65					228.65

Financial Account Information - January 2012

DATE	DESCRIPTION	Deposit Checking	General Checking	Investment Checking	Treasuries at cost	LAIF Invest. Fund	TOTAL ACTIVITY
12/31/2011	bal forward	510,345.41	30,000.00	76,101.90	1,700,678.16	5,933,500.93	8,250,626.40
01/20/2012	Deposit	18,033.27					18,033.27
	Credit Card-1/20	745.89					745.89
	Electronic	15,141.00					15,141.00
	Website-1/20	1,545.70					1,545.70
	Website-1/21	639.96					639.96
	Website-1/22	1,364.10					1,364.10
	Website-1/23	309.66					309.66
	ACH pmts	20,933.38					20,933.38
1/20	ARRA -Draw #18		381,447.00				381,447.00
	TRF#1071-ARRA Draw #18	381,447.00	(381,447.00)				0.00
01/23/2012	Deposit	52,656.01					52,656.01
	Credit Card-1/20	399.17					399.17
	Credit Card-1/23	2,478.26					2,478.26
	Electronic	14,879.21					14,879.21
	Website-1/23	1,282.18					1,282.18
	Website-1/24	269.87					269.87
01/24/2012	Deposit	29,375.78					29,375.78
	Credit Card-1/23	204.53					204.53
	Credit Card-1/24	1,404.92					1,404.92
	Electronic	15,918.70					15,918.70
	Website-1/24	1,377.14					1,377.14
	Website-1/25	191.60					191.60
01/25/2012	Deposit	31,586.67					31,586.67
	Deposit-Riv Taxes	496.64					496.64
	Credit Card-1/24	543.24					543.24
	Credit Card-1/25	6,346.86					6,346.86
	Electronic	8,413.51					8,413.51
	Website-1/25	1,344.73					1,344.73
	Website-1/26	188.84					188.84
01/27/12-PR	Federal Taxes		(35,756.93)				(35,756.93)
01/27/12-PR	State Taxes		(6,310.13)				(6,310.13)
01/27/12-PR	ING 457		(7,048.53)				(7,048.53)
01/27/12-PR	PR Direct Deposit		(99,335.99)				(99,335.99)
	Cks#14266-14325		(118,797.94)				(118,797.94)
	TRF#1072-AP&PR	(267,249.52)	267,249.52				0.00
01/26/2012	Deposit	24,113.56					24,113.56
	Credit Card-1/25	1,034.52					1,034.52
	Credit Card-1/26	2,596.57					2,596.57
	Electronic	10,918.86					10,918.86
	Website-1/26	1,126.88					1,126.88
	Website-1/27	815.11					815.11
01/27/2012	Deposit	42,994.17					42,994.17
	Credit Card-1/26	101.75					101.75
	Credit Card-1/27	1,071.49					1,071.49
	Electronic	6,694.41					6,694.41
	Website-1/27	1,714.55					1,714.55
	Website-1/28	1,007.79					1,007.79
	Website-1/29	870.68					870.68
	Website-1/30	218.89					218.89
	ACH pmts	53,598.29					53,598.29

Financial Account Information - January 2012

DATE	DESCRIPTION	Deposit Checking	General Checking	Investment Checking	Treasuries at cost	LAIF Invest. Fund	TOTAL ACTIVITY
12/31/2011	bal forward	510,345.41	30,000.00	76,101.90	1,700,678.16	5,933,500.93	8,250,626.40
01/30/2012	Deposit	46,756.18					46,756.18
	Credit Card-1/27	1,135.72					1,135.72
	Credit Card-1/30	1,699.31					1,699.31
	Electronic	6,500.03					6,500.03
	Website-1/30	981.59					981.59
	Website-1/31	91.24					91.24
	Website-1/31	397.76					397.76
01/31/2012	Deposit	50,217.19					50,217.19
	Deposit-M/C	15,139.20					15,139.20
	Deposit-Riv Taxes	32,749.41					32,749.41
	Deposit-Riv Taxes	3,124.30					3,124.30
	Deposit-SB taxes	20,916.78					20,916.78
	Credit Card-1/30	174.04					174.04
	Credit Card-1/31	1,610.71					1,610.71
	Electronic	20,246.64					20,246.64
	Website-1/31	1,084.22					1,084.22
	Website-2/1	721.60					721.60
	1/26-void ck#14288, 1/23		98.82				98.82
	Cks#14326-14368		(178,548.32)				(178,548.32)
	TRF#1073-AP	(178,449.50)	178,449.50				0.00
	EPA Pay Request #18		42,985.80				42,985.80
	TRF#1074-EPA #18	42,985.80	(42,985.80)				0.00
	January '12 NSF's	(1,233.68)					(1,233.68)
1/19	Cusip #912795Y62 Maturity				(1,699,699.19)		(1,699,699.19)
1/23	Cusip #912795Y96 purchase				500,918.48		500,918.48
1/31	retained in MM				60.49		60.49
	TOTALS	844,510.63	30,000.00	69,118.52	500,978.97	6,636,123.21	8,080,731.33

Investment Summary - January 2012

U.S. TREASURIES

Quantity	Description	Cusip	Maturity Date	Yield	Cost of Purchase	Market Value
501,000	US Treasury Bill	912795xxx	August 23, 2012	0.028%	500,918.48	500,744.49
501,000	Total Values				500,918.48	500,744.49

Money Market Account Activity-Beginning Balance	978.97
1/31/12 - Dividend/Interest	0.00
1/19/12 - Cusip # 912795Y62 Interest	300.81
Income	300.81
1/20/2012 Intra-Bank Transfers to/from Investment Checking	(1,200,000.00)
Fund Transfers	(1,200,000.00)
1/19/12 - Cusip # 912795Y62 Maturity	1,699,699.19
Redemptions	1,699,699.19
Cusip Purchase	(500,918.48)
Purchases	(500,918.48)
Ending Balance - Money Market	60.49
US Treasury Securities Investment Principal	500,918.48
Total Assets	500,978.97

Investment Summary - January 2012

LOCAL AGENCY INVESTMENT FUND

PERIOD	TOTAL WITHDRAWAL AMOUNT	TOTAL DEPOSIT AMOUNT	ACCRUED INTEREST (QUARTERLY)	ENDING BALANCE
July 31, 2011	\$0.00	\$0.00	\$39.05	\$32,944.00
August 31, 2011	\$0.00	\$2,000,000.00	\$0.00	\$2,032,944.00
September 30, 2011	(\$2,000,000.00)	\$1,300,000.00	\$0.00	\$1,332,944.00
October 31, 2011	\$0.00	\$800,000.00	\$556.93	\$2,133,500.93
November 30, 2011	(\$1,000,000.00)	\$700,000.00	\$0.00	\$1,833,500.93
December 31, 2011	(\$300,000.00)	\$4,400,000.00	\$0.00	\$5,933,500.93
January 31, 2012	\$0.00	\$700,000.00	\$2,622.28	\$6,636,123.21
February 29, 2012	\$0.00	\$0.00	\$0.00	\$6,636,123.21
March 31, 2012	\$0.00	\$0.00	\$0.00	\$6,636,123.21
April 30, 2012	\$0.00	\$0.00	\$0.00	\$6,636,123.21
May 31, 2012	\$0.00	\$0.00	\$0.00	\$6,636,123.21
June 30, 2012	\$0.00	\$0.00	\$0.00	\$6,636,123.21

L.A.I.F. INCOME SUMMARY

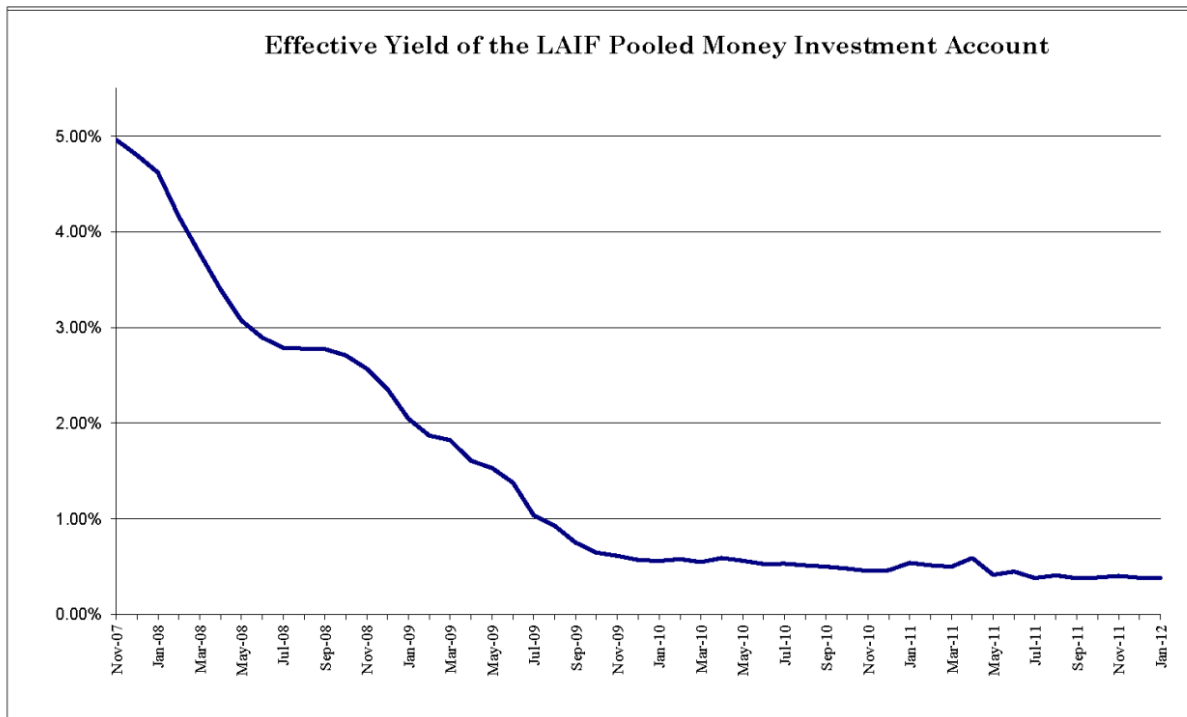
INCOME RECEIVED

CURRENT QUARTER

FY YEAR-TO-DATE

\$2,622.28

\$3,218.26



Monthly Revenue Allocation - January 2012

DATE	Description	Qty	DEPOSIT CHECKING DEPOSITS	AR Mail & Counter	AR Payment Centers	AR Credit Card	AR Electronic Rapid Pay	AR Web Site	AR ACH Auto Pay	AR TOTAL	AR Water Deposits	Water Allocation	Sewer Allocation	Recycled Allocation	RECAP TOTAL
01/03/2012	Mail & Counter	711	71,042.84	71,042.84						71,042.84					71,042.84
	Fraud - CC		(101.14)	(101.14)						(101.14)					(101.14)
	Credit Cards	33	4,079.68			4,079.68				4,079.68					4,079.68
	Electronic	225	18,104.34				18,104.34			18,104.34					18,104.34
	Website	25	2,367.34					2,323.59		2,323.59	43.75				2,367.34
	ACH payment	347	29,941.12						29,941.12	29,941.12					29,941.12
01/04/2012	Mail & Counter	814	78,836.18	78,836.18						78,836.18					78,836.18
	Credit Cards	48	8,024.46			8,024.46				8,024.46					8,024.46
	Electronic	453	31,722.76				31,722.76			31,722.76					31,722.76
	Website	22	2,007.63					1,969.13		1,969.13	38.50				2,007.63
01/05/2012	Mail & Counter	358	32,906.72	32,906.72						32,906.72					32,906.72
	Credit Cards	14	1,768.57			1,768.57				1,768.57					1,768.57
	Electronic	227	15,328.94				15,328.94			15,328.94					15,328.94
	Website	26	3,177.95					3,132.45		3,132.45	45.50				3,177.95
01/06/2012	Mail & Counter	315	43,920.33	43,920.33						43,920.33					43,920.33
	Credit Cards	19	1,787.01			1,787.01				1,787.01					1,787.01
	Electronic	186	12,930.67				12,930.67			12,930.67					12,930.67
	Website-42 fees	43	4,641.29					4,567.79		4,567.79	73.50				4,641.29
01/09/2012	Mail & Counter	609	92,014.59	92,014.59						92,014.59					92,014.59
	Credit Cards	40	4,334.44			4,334.44				4,334.44					4,334.44
	Electronic	186	15,551.93				15,551.93			15,551.93					15,551.93
	Website-15 fees	16	1,452.37					1,426.12		1,426.12	26.25				1,452.37
01/10/2012	Mail & Counter	380	50,308.88	50,308.88						50,308.88					50,308.88
	Deposit-M/C		9,257.85							9,257.85		9,257.85			9,257.85
	Credit Cards	24	2,600.21			2,600.21				2,600.21					2,600.21
	Electronic	219	14,104.27				14,104.27			14,104.27					14,104.27
	Website-13 fees	14	1,443.79					1,421.04		1,421.04	22.75				1,443.79
	ACH payment	456	44,433.14						44,433.14	44,433.14					44,433.14
01/11/2012	Mail & Counter	297	32,393.20	32,393.20						32,393.20					32,393.20
	Deposit-SCF rebate		134,986.72							134,986.72		134,986.72			134,986.72
	Dep-Calimsa pass thru		44,736.91							44,736.91		44,736.91			44,736.91
	Credit Cards	8	3,696.55			3,696.55				3,696.55					3,696.55
	Electronic	126	8,534.67				8,534.67			8,534.67					8,534.67
	Website	15	1,847.77					1,821.52		1,821.52	26.25				1,847.77
01/12/2012	Mail & Counter	300	46,091.56	46,091.56						46,091.56					46,091.56
	Credit Cards	16	2,072.52			2,072.52				2,072.52					2,072.52
	Electronic	130	9,079.79				9,079.79			9,079.79					9,079.79
	Website	16	1,483.53					1,455.53		1,455.53	28.00				1,483.53
01/13/2012	Mail & Counter	284	40,308.32	40,308.32						40,308.32					40,308.32
	Deposit-SB Taxes		233,597.00							233,597.00		230,064.06			233,597.00
	Deposit-SB Taxes		15,290.19							15,290.19		15,290.19			15,290.19
	Deposit-Riv Taxes		714.89							714.89		714.89			714.89
	Credit Cards	29	3,722.55			3,722.55				3,722.55					3,722.55
	Electronic	212	15,683.26				15,683.26			15,683.26					15,683.26
	Website	45	9,585.29					9,506.54		9,506.54	78.75				9,585.29
01/17/2012	Mail & Counter	749	74,312.40	74,312.40						74,312.40					74,312.40
	Credit Cards	40	5,859.23			5,859.23				5,859.23					5,859.23
	Electronic	205	14,143.17				14,143.17			14,143.17					14,143.17
	Website	27	2,424.51					2,377.26		2,377.26	47.25				2,424.51
	ACH payment	451	37,740.02						37,740.02	37,740.02					37,740.02
01/18/2012	Mail & Counter	650	77,279.38	77,279.38						77,279.38					77,279.38
	Credit Cards	44	5,128.16			5,128.16				5,128.16					5,128.16
	Electronic	325	22,570.32				22,570.32			22,570.32					22,570.32
	Website	19	1,737.43					1,704.18		1,704.18	33.25				1,737.43

Monthly Revenue Allocation - January 2012

DATE	Description	Qty	DEPOSIT CHECKING DEPOSITS	AR Mail & Counter	AR Payment Centers	AR Credit Card	AR Electronic Rapid Pay	AR Web Site	AR ACH Auto Pay	AR TOTAL	AR Water Fees & Deposits	Water Allocation	Sewer Allocation	Recycled Allocation	RECAP TOTAL
01/19/2012	Mail & Counter	242	55,400.16	55,400.16						55,400.16					55,400.16
	Credit Cards	19	3,100.71			3,100.71				3,100.71					3,100.71
	Electronic	150	11,511.12				11,511.12			11,511.12					11,511.12
01/20/2012	Website	12	1,079.59					1,058.59		1,058.59					1,058.59
	Mail & Counter	254	18,033.27	18,033.27						18,033.27					18,033.27
	Credit Cards	10	745.89			745.89				745.89					745.89
	Electronic	206	15,141.00				15,141.00			15,141.00					15,141.00
	Website	45	3,859.42					3,780.67		3,780.67					3,780.67
01/23/2012	ACH payment	451	20,933.38						20,933.38	20,933.38					20,933.38
	Mail & Counter	495	52,656.01	52,656.01						52,656.01					52,656.01
	Credit Cards	29	2,877.43			2,877.43				2,877.43					2,877.43
	Electronic	202	14,879.21				14,879.21			14,879.21					14,879.21
	Website	19	1,552.05					1,518.80		1,518.80					1,518.80
01/24/2012	Mail & Counter	360	29,375.78	29,375.78						29,375.78					29,375.78
	Credit Cards	15	1,609.45			1,609.45				1,609.45					1,609.45
	Electronic	219	15,918.70				15,918.70			15,918.70					15,918.70
	Website	19	1,568.74					1,535.49		1,535.49					1,535.49
01/25/2012	Mail & Counter	374	31,586.67	31,586.67						31,586.67					31,586.67
	Deposit-Riv taxes		496.64							496.64					496.64
	Credit Cards	46	6,890.10			6,890.10				6,890.10					6,890.10
	Electronic	114	8,413.51				8,413.51			8,413.51					8,413.51
	Website	14	1,533.57					1,509.07		1,509.07					1,509.07
01/26/2012	Mail & Counter	235	24,113.56	24,113.56						24,113.56					24,113.56
	Credit Cards	24	3,631.09			3,631.09				3,631.09					3,631.09
	Electronic	77	10,918.86				10,918.86			10,918.86					10,918.86
	Website	20	1,941.99					1,906.99		1,906.99					1,906.99
01/27/2012	Mail & Counter	214	42,994.17	42,994.17						42,994.17					42,994.17
	Credit Cards	14	1,173.24			1,173.24				1,173.24					1,173.24
	Electronic	78	6,694.41				6,694.41			6,694.41					6,694.41
	Website	45	3,811.91					3,733.16		3,733.16					3,733.16
	ACH payment	497	53,598.29						53,598.29	53,598.29					53,598.29
01/30/2012	Mail & Counter	440	46,756.18	46,756.18						46,756.18					46,756.18
	Credit Cards	26	2,835.03			2,835.03				2,835.03					2,835.03
	Electronic	95	6,500.03				6,500.03			6,500.03					6,500.03
	Website	13	1,470.59					1,447.84		1,447.84					1,447.84
01/31/2012	Mail & Counter	408	50,217.19	50,217.19						50,217.19					50,217.19
	Deposit-M/C		15,139.20							15,139.20					15,139.20
	Deposit-Riv Taxes		32,749.41							32,749.41					32,749.41
	Deposit-Riv Taxes		3,124.30							3,124.30					3,124.30
	Deposit-SB Taxes		20,916.78							20,916.78					20,916.78
	Credit Cards	14	1,784.75			1,784.75				1,784.75					1,784.75
	Electronic	266	20,246.64				20,246.64			20,246.64					20,246.64
	Website	18	1,805.82					1,774.32		1,774.32					1,774.32
Jan-12	Utility Pmt Othr-445			(34,766.69)	34,766.69					0.00					0.00
	Jan 12 NSF's			(1,233.68)						(1,233.68)					(1,233.68)
Prop 50 #9	\$301,761.61 (1/4)									0.00					0.00
ARRA #18	\$381,447.00 (1/20)									0.00					0.00
EPA #18	\$42,985.80 (1/31)									0.00					0.00
TOTALS		15,597	2,093,359.66	957,858.82	34,766.69	67,721.07	287,977.60	49,970.08	186,645.95	1,584,940.21	942.50	372,490.23	134,986.72	0.00	2,093,359.66

TOTAL # AR PAYMENTS 8,064 445 512 3,901 473 2,202 **15,597**

PERCENT OF TOTAL RECEIVED 51.70% 2.85% 3.28% 25.01% 3.03% 14.12% **100%**

FY 2012 - Water Revenue

ACCOUNT#	DESCRIPTION	BUDGET	July '11	Aug '11	Sept '11	Oct '11	Nov '11	Dec '11	Jan '12	Year to Date	Percentage YTD
02-40010	Sales - Water	6,000,000	168,794	697,030	933,812	615,247	460,874	339,522	360,335	3,575,613	59.59%
02-40011	Sales - Construction Water	31,000	902	2,180	2,638	3,292	1,221	472	653	11,359	36.64%
02-40012	Sales - Imported Water (SGPWA)	200,000	21,022	21,415	27,470	17,633	13,322	10,486	11,347	122,695	61.35%
02-40013	Sales - Imported Water (MUNI)	800,000	8,600	94,133	122,242	84,945	65,675	49,122	52,153	476,870	59.61%
02-40014	Sales Disc.-Multi Units Usage Chrg.	(130,000)	(3,463)	(12,533)	(17,059)	(11,220)	(9,659)	(9,897)	(10,509)	(74,340)	57.18%
02-40015	Water Wholesale Revenue	60,000	3,677	3,540	3,421	3,276	2,777	23,263	0	39,955	66.59%
02-40016	Service Establishment Fee	100	0	0	0	50	0	25	0	75	75.00%
02-41000	Service Demand Charges	2,300,000	44,953	161,798	193,294	192,752	193,100	193,212	193,214	1,172,322	50.97%
02-41001	Fire Service Standby Fees	15,000	502	1,310	1,500	1,526	1,331	1,549	1,328	9,044	60.29%
02-41003	Construction Service Charge	10,000	138	612	812	697	651	656	518	4,083	40.83%
02-41005	Sales Disc-Multi Units Service Chrg.	(92,000)	(2,194)	(7,488)	(8,941)	(8,941)	(8,941)	(8,941)	(8,941)	(54,385)	59.11%
02-41010	Unauthorized Use of Water Charge	1,500	750	0	0	0	0	0	0	750	50.00%
02-41110	Meter/Lateral installation	2,500	0	1,125	0	3,375	0	0	0	4,500	180.00%
02-41112	Fire Flow Measurements & Reports	1,900	150	75	225	150	225	75	0	900	47.37%
02-41113	Disconnect/Reconnect Fees	100,000	10,195	10,665	10,840	11,400	12,470	8,785	10,865	75,220	75.22%
02-41121	Delinquent Payment Charges	125,000	12,245	16,051	13,005	20,118	15,417	10,192	8,016	95,044	76.04%
02-41124	Bad Debt	0	0	0	0	0	0	0	0	0	0
02-42123	Management & Accounting Fees	733,170	61,092	61,098	61,098	61,098	61,098	61,098	61,098	427,680	58.33%
02-43010	Interest Earned	10,000	69	25	232	581	25	556	1,537	3,026	30.26%
02-43110	Property Tax - Unsecured	100,000	0	0	0	5,882	0	42,312	9	48,203	48.20%
02-43120	Property Tax - Secured	2,050,000	0	0	0	0	0	423,213	247,412	670,625	32.71%
02-43130	Tax Collection - Prior	60,000	0	0	0	5,854	0	2,797	1,517	10,169	16.95%
02-43140	Other Taxes (including homeowners)	90,000	0	0	0	0	0	9,204	66,967	76,171	84.63%
02-49150	Revenue - Misc. Non-Operating	35,000	2,060	10,251	2,168	2,086	2,335	3,805	2,068	24,773	70.78%
	WATER OPERATING REVENUE	12,503,170	329,491	1,061,287	1,346,758	1,009,801	811,921	1,161,505	999,586	6,720,350	53.75%
02-82002	Grants (FEIMA)	0	0	0	1,940	0	1,155	0	0	3,095	
02-89901	Facility Capacity Charges	0	0	0	0	130,087	0	0	0	130,087	
02-89902	Sustainability	0	0	0	0	10,453	0	0	0	10,453	
	TOTAL WATER REVENUE	12,503,170	329,491	1,061,287	1,348,698	1,150,340	813,076	1,161,505	999,586	6,863,985	

FY 2012 - Sewer Revenue

ACCOUNT#	DESCRIPTION	BUDGET	July '11	Aug '11	Sept '11	Oct '11	Nov '11	Dec '11	Jan '12	Year to Date	Percentage YTD
03-40016	Sales - Establish Service Fee	100	0	0	0	0	0	0	0	0	0.00%
03-41000	Sales - Sewer Charges	10,425,000	275,183	854,191	894,608	871,186	870,979	873,133	865,089	5,504,370	52.80%
03-41005	Sales Disc-Multi Units Service Chrg.	(200,000)	(5,633)	(16,671)	(17,075)	(17,038)	(17,006)	(17,027)	(17,001)	(107,451)	53.73%
03-41110	Meter/Lateral Installation	1,000	0	0	0	0	0	0	0	0	0.00%
03-41121	Penalty Late Charges	130,000	11,154	12,060	8,279	12,923	13,546	10,664	11,329	79,956	61.50%
03-41124	Bad Debt	0	0	0	0	0	0	0	0	0	0
03-42122	Revenue - other operating	1,000	0	180	0	360	0	0	0	540	54.00%
03-43010	Interest Earned	10,000	0	191	0	0	0	0	1,311	1,502	15.02%
03-43110	Property Tax - Unsecured	50,000	0	0	0	0	0	50,000	0	50,000	100.00%
03-43120	Property Tax - Secured	450,000	0	0	0	0	0	450,000	0	450,000	100.00%
03-43130	Tax Collection - Prior	15,000	0	0	0	0	0	7,500	0	7,500	50.00%
03-43140	Other Taxes (including homeowners)	1,500	0	0	0	0	0	1,500	0	1,500	100.00%
03-49150	Misc. Non-Oper Revenue	25,000	0	0	0	0	0	17,614	134,987	152,601	610.40%
	SEWER OPERATING REVENUE	10,908,600	280,704	849,951	885,813	867,431	867,518	1,393,385	995,716	6,140,517	56.29%
03-82003	Grants - ARRA	0	0	0	55,243	0	261,650	245,984	381,447	944,324	
03-82004	Grants - Prop 50	0	0	0	0	0	0	0	301,762	301,762	
03-89901	Facility Capacity Charges	0	0	0	0	157,839	0	0	0	157,839	
8990540016	Contrib Capital-Infrastructure	0	0	0	0	0	0	0	0	0	
	TOTAL SEWER REVENUE	10,908,600	280,704	849,951	941,056	1,025,270	1,129,168	1,639,369	1,678,924	7,544,442	

FY 2012 - Recycled Water Revenue

ACCOUNT#	Description	BUDGET	July '11	Aug '11	Sept '11	Oct '11	Nov '11	Dec '11	Jan '12	Year to Date	Percentage YTD
04-40010	Sales - Recycled Water	220,000	12,326	44,736	59,761	36,218	20,351	9,687	13,124	196,204	89.18%
04-40011	Sales - Construction Water	2,500	6	21	224	289	55	4	3	602	24.07%
04-41000	Sales - Service Demand Chrg.	27,500	694	1,756	3,182	3,158	3,056	3,019	3,136	18,001	65.46%
04-41003	Const. Water Minimum Chrg.	4,000	28	193	269	285	262	221	193	1,451	36.28%
04-41121	Penalty - Late Charge	500	22	11	8	8	6	8	27	91	18.13%
04-43010	Interest Earned	50	0	0	0	0	0	0	0	0	0.00%
04-43110	Property Tax - Unsecured	500	0	0	0	0	0	500	0	500	100.00%
04-43120	Property Tax - Secured	10,000	0	0	0	0	0	10,000	0	10,000	100.00%
04-43130	Property Tax - Prior	100	0	0	0	0	0	100	0	100	100.00%
04-43140	Other Taxes (including homeowners)	100	0	0	0	0	0	100	0	100	100.00%
04-49150	Misc. Non-Operating Revenue	0	0	0	0	0	600	600	0	1,200	100.00%
	RECYCLED WATER OPERATING REVENUE	265,250	13,076	46,717	63,444	39,958	24,331	24,240	16,482	228,248	86.05%
04-82001	Grants-EPA #XP989384-01	0	0	0	0	0	0	0	0	0	
04-89901	Facility Capacity Charges	0	0	0	0	0	0	19,521	0	19,521	
	TOTAL RECYCLED WATER REVENUE	265,250	13,076	46,717	63,444	39,958	24,331	43,761	16,482	247,769	

FY 2012 - Water Expenses

ACCOUNT#	DESCRIPTION	BUDGET	July '11	Aug '11	Sept '11	Oct '11	Nov '11	Dec '11	Jan '12	Year to Date	Percentage YTD
02-5-01-50010	Labor-Water Resources	635,700	43,996	44,031	47,436	45,530	44,599	69,321	46,986	341,897	53.78%
02-5-01-50011	Labor Credit	0	0	0	0	0	0	0	0	0	
02-5-01-50013	Benefits-Fica	48,630	3,629	3,667	3,921	3,781	3,698	5,422	3,912	28,020	57.62%
02-5-01-50014	Benefits-Life Insurance	3,420	250	256	256	255	258	249	256	1,779	52.02%
02-5-01-50016	Benefits-HealthDefrd Comp	90,175	7,981	8,920	8,920	8,920	8,800	9,870	8,973	62,985	69.18%
02-5-01-50017	Benefits-Disability Insurance	7,650	804	811	858	824	771	960	752	5,780	75.56%
02-5-01-50019	Benefits-Workers Compensation	33,700	3,500	0	0	1,618	1,855	5,579	2,021	14,573	43.24%
02-5-01-50021	Benefits-PERS	44,500	2,522	2,901	2,957	2,961	2,775	4,384	3,025	21,525	48.37%
02-5-01-50022	Benefits-PERS-Employer	85,885	4,910	5,599	5,707	5,714	5,355	8,461	5,839	41,586	48.42%
02-5-01-50023	Benefits-Uniforms	2,850	178	156	321	226	130	155	131	1,297	45.51%
02-5-01-50024	Benefits-Vacation & Sick Pay	20,000	616	277	577	389	416	982	655	3,912	19.56%
02-5-01-50025	Benefits-Boot Allowance	1,425	450	0	150	150	0	0	0	750	52.63%
02-5-01-51003	R&M - Structures	200,000	9,669	6,028	45,300	8,015	18,014	46,963	9,423	143,411	71.71%
02-5-01-51011	R&M - CLA Valves	15,000	0	0	0	4,941	36	2,586	0	7,563	50.42%
02-5-01-51140	General Supplies & Expenses	2,000	0	208	128	688	0	587	0	1,610	80.52%
02-5-01-51210	Utilities - Power Purchases	1,500,000	50,795	178,242	128,870	207,098	98,481	58,177	0	721,863	48.11%
02-5-01-51211	Utilities - Electricity & Fuel	4,000	0	370	491	433	348	336	0	1,978	49.44%
02-5-01-51316	Imported Water Purchases	1,000,000	97,331	108,640	106,403	81,407	80,188	81,214	70,000	625,184	62.52%
02-5-01-54019	Licenses & Permits	25,000	0	0	25,403	0	1,249	1,969	60	28,681	114.73%
02-5-01-54110	Laboratory Services	90,000	0	4,250	5,432	1,975	2,767	4,093	3,708	22,225	24.69%
02-5-01-57040	YVRWFF Operating Expense	550,000	33,071	76,526	72,629	49,532	58,869	50,672	28,790	370,089	67.29%
	WATER RESOURCE TOTALS	4,359,935	259,701	440,871	455,760	424,457	328,609	351,981	184,550	2,445,909	56.10%
02-5-03-50010	Labor-Public Works	945,340	56,697	63,119	60,315	65,074	66,775	89,724	60,861	462,565	48.93%
02-5-03-50011	Labor Credit	0	0	(720)	(3,344)	0	(1,068)	(18,977)	(7,543)	(31,653)	
02-5-03-50013	Benefits-Fica	72,320	4,617	5,156	4,973	5,376	5,499	7,377	5,051	38,050	52.61%
02-5-03-50014	Benefits-Life Insurance	6,160	416	424	424	424	426	420	365	2,899	47.06%
02-5-03-50016	Benefits-HealthDefrd Comp	162,315	13,305	15,404	15,340	16,276	16,357	17,161	13,323	107,167	66.02%
02-5-03-50017	Benefits-Disability Insurance	11,345	1,603	1,149	1,120	1,184	1,202	1,398	964	8,620	75.98%
02-5-03-50019	Benefits-Workers Compensation	50,100	4,062	153	0	1,618	3,849	4,970	3,403	18,055	36.04%
02-5-03-50021	Benefits-PERS	66,175	3,493	3,846	3,930	4,086	3,983	5,585	3,880	28,803	43.53%
02-5-03-50022	Benefits-PERS Employer	127,715	6,808	7,423	7,585	7,885	7,687	10,779	7,489	55,656	43.58%
02-5-03-50023	Benefits-Uniforms	20,000	380	371	442	283	357	441	388	2,661	13.31%
02-5-03-50024	Benefits-Vacation & Sick Pay	5,130	0	0	193	387	193	387	387	1,546	30.14%
02-5-03-50025	Benefits-Boot Allowance	2,565	0	0	289	424	500	327	199	1,739	67.82%
02-5-03-51001	R & M - Vehicles & Equipment	170,000	11,295	13,722	9,925	16,065	10,345	21,434	20,581	103,368	60.80%
02-5-03-51011	R&M - Valves	10,000	0	0	0	571	689	(4,364)	(2,553)	(5,658)	-56.58%
02-5-03-51020	R&M - Pipelines	275,000	10,480	17,754	21,847	34,406	18,455	20,237	13,622	136,801	49.75%
02-5-03-51021	R&M - Service Lines	125,000	7,127	14,421	5,290	18,658	6,969	6,306	1,812	60,583	48.47%
02-5-03-51022	R&M - Fire Hydrants	25,000	91	(102)	(1,826)	2,385	3,500	2,544	(2,212)	4,379	17.52%
02-5-03-51030	R&M - Water Meters	70,000	1,839	1,614	5,184	12,682	6,317	1,686	1,385	30,706	43.87%
02-5-03-51092	Equipment Credits	0	0	(241)	(1,672)	0	(391)	(6,696)	(2,682)	(11,882)	
02-5-03-51140	General Supplies & Expenses	3,000	13	0	38	0	0	0	0	51	1.69%
	PUBLIC WORKS TOTALS	2,147,165	122,227	143,492	130,055	187,784	151,644	160,737	118,719	1,014,658	47.26%

FY 2012 - Water Expenses

ACCOUNT#	DESCRIPTION	BUDGET	July '11	Aug '11	Sept '11	Oct '11	Nov '11	Dec '11	Jan '12	Year to Date	Percentage YTD
02-5-06-50010	Labor-Administration	745,830	41,081	46,406	46,363	46,412	46,402	70,749	46,523	343,946	46.12%
02-5-06-50011	Labor Credit	0	0	0	0	0	0	(157)	0	(157)	
02-5-06-50012	Director Fees	15,000	0	1,094	1,155	1,641	1,337	1,580	1,276	8,084	53.89%
02-5-06-50013	Benefits-Fica	57,050	3,153	3,522	3,526	3,574	3,496	4,886	4,089	26,246	46.01%
02-5-06-50014	Benefits-Life Insurance	3,640	284	291	290	290	290	283	290	2,018	55.44%
02-5-06-50016	Benefits-Health/Defrd Comp	95,870	9,599	12,127	12,127	12,272	12,227	13,984	12,523	84,958	88.51%
02-5-06-50017	Benefits-Disability Insurance	8,950	127	730	731	701	675	747	732	4,444	49.65%
02-5-06-50019	Benefits-Workers Compensation	39,530	1,800	0	0	1,618	572	1,735	588	6,312	15.97%
02-5-06-50021	Benefits-PERS	52,200	2,781	3,204	3,204	3,208	3,208	4,820	3,225	23,651	45.31%
02-5-06-50022	Benefits PERS Employer	138,550	5,420	6,184	6,184	6,192	6,192	9,303	6,224	45,699	32.98%
02-5-06-50023	Uniforms	3,030	118	114	284	206	114	142	114	1,071	35.35%
02-5-06-50024	Benefits-Vacation & Sick Pay	15,000	861	599	639	713	705	1,312	1,119	5,948	39.65%
02-5-06-50025	Benefits-Boots	1,515	0	150	0	296	0	0	0	446	29.43%
02-5-06-51003	R&M - Structures	20,000	1,130	890	5,452	(1,157)	1,157	(660)	7,790	14,602	73.01%
02-5-06-51091	Expense Credits (overhead)	0	0	(85)	(1,143)	0	(148)	(5,979)	(1,799)	(9,154)	
02-5-06-51120	Safety Equipment/Supplies	25,000	2,500	4,862	969	1,448	931	1,385	343	12,439	49.75%
02-5-06-51125	Petroleum Products	110,000	8,762	13,095	8,098	14,427	7,166	8,254	6,043	65,845	59.86%
02-5-06-51130	Office Supplies & Expenses	40,000	4,889	2,317	8,146	4,296	985	1,231	1,830	23,695	59.24%
02-5-06-51140	General Supplies & Expenses	30,000	34	668	143	4,579	1,775	441	4,488	12,128	40.43%
02-5-06-51211	Utilities - Electricity	26,000	102	3,444	3,323	3,178	1,886	1,640	0	13,572	52.20%
02-5-06-51213	Utilities - Natural Gas	5,000	37	37	40	81	328	591	0	1,115	22.29%
02-5-06-54002	Dues & Subscriptions	10,000	0	95	167	2,291	913	1,096	1,498	6,059	60.59%
02-5-06-54005	Computer Expenses	75,000	3,240	4,886	7,686	2,430	9,710	12,854	2,284	43,091	57.45%
02-5-06-54010	Postage	6,500	191	126	75	94	276	143	2,298	3,201	49.25%
02-5-06-54011	Printing & Publications	20,000	3,487	2,219	93	73	0	0	0	5,872	29.36%
02-5-06-54012	Education & Training	30,000	175	1,235	557	487	399	1,012	0	3,865	12.88%
02-5-06-54013	Utility Billing Expenses	135,000	10,965	11,114	11,330	11,364	10,557	10,432	7,039	72,800	53.93%
02-5-06-54014	Public Relations	25,000	128	662	444	1,062	0	150	0	2,445	9.79%
02-5-06-54015	Rents & Leases	3,500	402	197	400	197	197	0	204	1,596	45.60%
02-5-06-54016	Travel Related Expenses	7,500	15	44	18	18	39	27	35	195	2.60%
02-5-06-54017	Certifications & Renewals	6,000	180	155	125	365	755	130	50	1,760	29.33%
02-5-06-54020	Meeting Related Expenses	4,000	7	265	613	180	184	342	738	2,329	58.24%
02-5-06-54024	Utilities - Waste Disposal	2,500	159	159	159	159	159	159	0	952	38.07%
02-5-06-54025	Utilities - Telephone	35,000	2,431	2,577	2,249	2,265	2,621	2,483	1,445	16,072	45.92%
02-5-06-54104	Contractual Services	70,000	16,941	2,175	5,186	2,774	2,285	2,547	8,080	39,987	57.12%
02-5-06-54107	Legal	45,000	3,268	4,706	2,391	2,833	4,095	3,283	0	20,574	45.72%
02-5-06-54108	Audit & Accounting	16,000	5,000	0	9,750	1,123	0	0	0	15,873	99.20%
02-5-06-54109	Professional Fees	100,000	17,133	12,607	10,412	5,229	8,597	6,342	2,500	62,820	62.82%
02-5-06-55500	Depreciation Reserves	375,095	31,257	31,258	31,258	31,258	31,258	31,258	31,258	218,805	58.33%
02-5-06-56001	Infrastructure Replacement	397,935	33,164	33,161	33,161	33,161	33,161	33,161	33,161	232,130	58.33%
02-5-06-57030	Regulatory Compliance	120,000	10,730	9,734	9,324	9,324	9,324	9,324	9,324	67,083	55.90%
02-5-06-57096	Beaumont Basin Watermaster	95,000	213	0	0	0	0	0	0	213	0.22%
02-5-06-57100	County Tax Collector Fees	10,000	0	0	0	0	0	0	0	0	0.00%
02-5-06-57199	Suspense	7,500	0	164	207	30	30	2,491	675	3,567	47.56%
	ADMINISTRATION TOTALS	3,028,695	221,771	217,187	225,117	207,487	207,028	233,521	195,984	1,508,093	49.79%

FY 2012 - Sewer Expenses

ACCOUNT#	DESCRIPTION	BUDGET	July '11	Aug '11	Sept '11	Oct '11	Nov '11	Dec '11	Jan '12	Year to Date	Percentage YTD
03-5-02-50010	Labor-WW Treatment	899,200	52,605	61,482	63,413	62,694	68,527	97,602	65,426	471,748	52.46%
03-5-02-50013	Benefits-Fica	68,800	4,352	5,160	5,292	5,265	5,710	7,807	5,411	38,997	56.68%
03-5-02-50014	Benefits-Life Insurance	4,500	334	341	341	340	343	334	341	2,373	52.73%
03-5-02-50016	Benefits-HealthDefrd Comp	118,650	10,288	12,693	12,693	12,693	12,573	14,438	12,773	88,152	74.30%
03-5-02-50017	Benefits-Disability Insurance	10,800	999	1,130	1,156	1,140	1,169	1,374	1,029	7,995	74.03%
03-5-02-50019	Benefits-Workers Compensation	47,700	3,500	0	0	1,618	3,148	1,831	3,195	13,292	27.87%
03-5-02-50021	Benefits-PERS	62,950	3,538	4,135	4,190	4,194	4,224	6,313	4,259	30,854	49.01%
03-5-02-50022	Benefits-PERS Employer	121,500	6,895	7,980	8,088	8,095	8,153	12,184	8,220	59,614	49.07%
03-5-02-50023	Benefits-Uniforms	3,750	297	340	360	288	284	349	286	2,204	58.76%
03-5-02-50024	Benefits-Vacation & Sick Pay	15,000	576	323	384	468	552	828	365	3,496	23.31%
03-5-02-50025	Benefits-Boot Allowance	1,875	150	104	0	150	164	150	150	868	46.29%
03-5-02-51003	R&M - Structures	200,000	14,747	3,968	4,696	10,915	16,898	13,765	17,029	82,017	41.01%
03-5-02-51010	R&M - Automation Control	85,000	0	3,272	1,820	9,893	5,218	3,352	8,675	32,228	37.92%
03-5-02-51106	Chemicals	600,000	21,103	69,542	41,330	42,631	55,120	32,675	15,352	277,753	46.29%
03-5-02-51111	Propane	2,500	0	3,053	0	0	3,144	0	0	6,197	247.88%
03-5-02-51115	Laboratory Supplies	30,000	744	2,411	2,912	2,557	(309)	1,824	804	10,942	36.47%
03-5-02-51140	General Supplies & Expenses	1,000	0	93	54	0	0	0	0	147	14.73%
03-5-02-51210	Utilities - Power Purchases	690,000	38,790	74,567	72,931	64,793	50,918	51,274	0	353,274	51.20%
03-5-02-54110	Laboratory Services	120,000	3,264	10,757	6,828	11,994	7,719	7,810	4,869	53,241	44.37%
03-5-02-57031	Sludge Disposal	300,000	25,052	24,416	25,550	24,028	26,949	27,084	0	153,078	51.03%
03-5-02-57033	Brine Disposal	30,000	0	0	0	10,290	0	0	0	10,290	34.30%
	TREATMENT TOTALS	3,413,225	187,233	285,766	252,037	274,046	270,504	280,994	148,181	1,698,760	49.77%

FY 2012 Sewer Expenses

ACCOUNT#	DESCRIPTION	BUDGET	July '11	Aug '11	Sept '11	Oct '11	Nov '11	Dec '11	Jan '12	Year to Date	Percentage YTD
03-5-06-50010	Labor-Administration	708,050	35,644	42,774	42,732	42,781	42,771	65,302	42,891	314,895	44.47%
03-5-06-50012	Directors Fees	15,000	0	1,094	1,155	1,641	1,337	1,580	1,276	8,084	53.89%
03-5-06-50013	Benefits-Fica	54,170	2,702	3,228	3,233	3,280	3,203	4,438	3,794	23,878	44.08%
03-5-06-50014	Benefits-Life Insurance	3,500	285	291	290	290	290	284	290	2,021	57.75%
03-5-06-50016	Benefits-Health\Defrd Comp	92,075	9,229	11,989	11,969	12,114	12,069	13,598	12,348	83,295	90.46%
03-5-06-50017	Benefits-Disability Insurance	8,500	604	684	685	655	629	716	694	4,667	54.91%
03-5-06-50019	Benefits-Workers Compensation	37,530	3,200	0	0	1,618	2,286	2,438	2,187	11,729	31.25%
03-5-06-50021	Benefits-PERS	49,570	2,564	2,950	2,950	2,954	2,954	4,439	2,971	21,782	43.94%
03-5-06-50022	Benefits PERS Employer	95,660	4,996	5,693	5,693	5,701	5,701	8,567	5,733	42,086	44.00%
03-5-06-50023	Benefits-Uniforms	2,910	88	86	107	86	91	127	91	677	23.26%
03-5-06-50024	Benefits-Vacation & Sick Pay	10,000	861	599	639	713	705	1,312	1,119	5,948	59.48%
03-5-06-50025	Benefits-Boot Allowance	1,455	0	0	0	0	0	0	0	0	0.00%
03-5-06-51120	Safety Equipment/Supplies	7,500	0	4,734	969	82	0	0	348	6,133	81.78%
03-5-06-51125	Petroleum Products	17,500	1,000	1,000	1,000	1,279	3,132	(729)	1,864	8,546	48.83%
03-5-06-51130	Office Supplies	5,000	0	592	584	43	157	0	80	1,456	29.13%
03-5-06-51140	General Supplies & Expenses	7,500	0	129	0	3,772	1,700	42	3,843	9,485	126.47%
03-5-06-54002	Dues & Subscriptions	10,000	0	225	251	2,555	1,226	858	2,342	7,456	74.56%
03-5-06-54003	Management & Admin Services	733,170	61,092	61,098	61,098	61,098	61,098	61,098	61,098	427,680	58.33%
03-5-06-54005	Computer Expenses	70,000	3,105	3,021	3,169	1,138	4,202	18,900	1,744	35,280	50.40%
03-5-06-54011	Printing & Publications	7,500	3,487	2,219	93	73	0	0	0	5,872	78.30%
03-5-06-54012	Education & Training	20,000	175	1,425	175	175	200	175	0	2,325	11.62%
03-5-06-54014	Public Relations	8,000	128	662	107	1,007	0	0	0	1,903	23.79%
03-5-06-54016	Travel Related Expenses	8,500	0	212	840	93	2,240	72	73	3,530	41.53%
03-5-06-54017	Certifications & Renewals	5,500	0	365	0	0	480	0	855	1,700	30.91%
03-5-06-54019	Licenses & Permits	42,500	0	0	4,109	0	39,787	0	1,977	45,873	107.94%
03-5-06-54020	Meeting Related Expenses	2,500	0	204	603	151	137	368	775	2,239	89.57%
03-5-06-54024	Utilities - Waste Disposal	12,500	959	945	945	945	945	945	0	5,685	45.48%
03-5-06-54025	Utilities - Telephone	16,500	1,507	1,507	1,508	1,514	1,543	1,853	956	10,389	62.97%
03-5-06-54030	Drinking Water	1,000	56	112	49	56	98	35	77	483	48.30%
03-5-06-54104	Contractual Services	30,000	11,427	984	1,437	1,230	1,103	1,228	4,646	22,056	73.52%
03-5-06-54107	Legal	45,000	3,625	5,161	1,676	2,865	5,785	3,510	0	22,621	50.27%
03-5-06-54108	Audit & Accounting	16,000	5,000	0	9,750	1,123	0	0	0	15,873	99.20%
03-5-06-54109	Professional Fees	300,000	43,403	22,638	49,485	58,099	88,108	4,767	2,500	268,998	89.67%
03-5-06-55500	Depreciation Reserves	327,260	27,268	27,272	27,272	27,272	27,272	27,272	27,272	190,900	58.33%
	Infrastructure Replacement	786,300	65,525	65,525	65,525	65,525	65,525	65,525	65,525	458,675	58.33%
03-5-06-56001	Insurance	115,000	9,321	9,734	9,324	9,324	9,324	9,324	0	65,675	57.11%
03-5-06-57030	Regulatory Compliance	50,000	21,447	0	0	42,000	0	0	0	63,447	126.89%
03-5-06-57100	County Tax Collection Fees	1,200	0	0	0	0	0	0	0	0	0.00%
	ADMINISTRATION TOTALS	3,724,350	318,697	279,135	309,423	353,251	386,099	298,045	258,694	2,203,343	59.16%

FY 2012 - Sewer Expenses

ACCOUNT#	DESCRIPTION	BUDGET	July '11	Aug '11	Sept '11	Oct '11	Nov '11	Dec '11	Jan '12	Year to Date	Percentage YTD
03-5-07-50010	Labor-Environmental Control	213,570	13,239	14,750	14,588	14,418	14,389	23,212	14,660	109,256	51.16%
03-5-07-50011	Labor Credit	0	0	0	0	0	0	(302)	0	(302)	
03-5-07-50013	Benefits-Fica	16,340	1,069	1,153	1,141	1,128	1,125	1,852	1,147	8,615	52.73%
03-5-07-50014	Benefits-Life Insurance	1,400	83	85	85	85	85	83	85	592	42.31%
03-5-07-50016	Benefits-Health/Defrd Comp	37,020	3,271	3,423	3,423	3,423	3,423	3,980	3,458	24,403	65.92%
03-5-07-50017	Benefits-Disability Insurance	2,565	234	253	251	249	248	368	222	1,824	71.11%
03-5-07-50019	Benefits-Workers Compensation	11,320	2,000	0	0	1,618	1,050	1,728	1,070	7,466	65.95%
03-5-07-50021	Benefits-PERS	14,950	744	870	870	870	870	1,305	870	6,397	42.79%
03-5-07-50022	Benefits-PERS Employer	28,855	1,449	1,679	1,679	1,679	1,679	2,518	1,679	12,360	42.83%
03-5-07-50023	Benefits-Uniforms	1,170	108	114	133	104	104	130	105	796	68.03%
03-5-07-50024	Benefits-Vacation & Sick Pay	6,000	0	0	0	0	0	0	0	0	0.00%
03-5-07-50025	Benefits-Boot Allowance	585	300	0	0	0	0	0	0	300	51.28%
03-5-07-51003	R&M - Structures	320,000	13,408	47,833	15,229	30,860	16,612	16,783	24,246	164,969	51.55%
03-5-07-51140	General Supplies & Expenses	1,000	0	0	0	0	709	0	650	1,358	135.83%
03-5-07-51241	Lift Station #1	70,000	3,206	8,303	3,762	11,643	2,928	2,415	3	32,261	46.09%
03-5-07-51242	Lift Station #2	12,000	402	681	648	1,576	822	763	0	4,892	40.76%
03-5-07-51243	Lift Station #3	7,500	90	72	489	236	261	0	0	1,148	15.31%
03-5-07-51244	Lift Station #4	20,000	387	936	0	1,874	1,107	1,050	0	5,355	26.77%
03-5-07-51245	Lift Station #5	5,000	0	94	99	98	87	77	0	455	9.10%
03-5-07-51248	Lift Station #8	3,000	0	49	51	50	48	43	0	240	8.01%
03-5-07-54109	Professional Fees	50,000	0	0	0	8,065	7,384	11,119	7,484	34,053	68.11%
03-5-07-54110	Laboratory Services	2,500	0	0	0	0	0	0	358	358	14.32%
ENVIRONMENTAL CONTROL TOTAL		824,775	39,990	80,294	42,447	77,976	52,930	67,123	56,037	416,796	50.53%
03-5-40-57002	Asset Acq. - Treatment		0	0	0	0	0	0	0	0	
03-5-40-57006	Asset Acq. - Administration		0	0	0	0	0	0	0	0	
03-5-40-57007	Asset Acq. - Environmental Control		0	0	0	0	0	58,829	0	58,829	
03-5-40-57009	Plant Support (03-13105 Sari Line)		0	0	0	0	0	0	0	0	0.00%
03-5-40-57202	Debt Service - Principal		0	0	1,907,783	0	0	0	0	1,907,783	99.91%
03-5-40-57403	Debt Service - Interest		0	0	1,015,886	0	0	0	0	1,015,886	99.89%
Debt & Capital Outlay		2,946,250	0	0	2,923,669	0	0	58,829	0	2,982,497	101.23%
TOTAL SEWER EXPENSES		10,908,600	545,920	645,195	3,527,576	705,272	709,532	704,991	462,912	7,301,397	66.93%

FY 2012 - Recycled Water Expenses

ACCOUNT#	Description	BUDGET	July '11	Aug '11	Sept '11	Oct '11	Nov '11	Dec '11	Jan '12	Year to Date	Percentage YTD
04-5-06-50010	Labor-Recycled Water	76,900	0	0	0	0	0	0	0	0	0.00%
04-5-06-50012	Director Fees	2,500	0	0	0	0	0	0	0	0	0.00%
04-5-06-50013	Benefits-FICA	6,655	0	0	0	0	0	0	0	0	0.00%
04-5-06-50014	Benefits-Life Insurance	440	0	0	0	0	0	0	0	0	0.00%
04-5-06-50016	Benefits-Health & Def Comp	8,890	370	370	370	370	370	370	370	2,591	29.15%
04-5-06-50017	Benefits-Disability Insurance	1,085	0	0	0	0	0	0	0	0	0.00%
04-5-06-50019	Benefits-Workers Compensation	4,610	0	0	0	0	0	0	0	0	0.00%
04-5-06-50021	Benefits-PERS Employee	6,090	0	0	0	0	0	0	0	0	0.00%
04-5-06-50022	Benefits-PERS Employer	9,250	0	0	0	0	0	0	0	0	0.00%
04-5-06-50023	Benefits-Uniforms	360	0	0	0	0	0	0	0	0	0.00%
04-5-06-50024	Benefits-Vacation & Sick Pay	1,250	0	0	0	0	0	0	0	0	0.00%
04-5-06-50025	Benefits-Boots	150	0	0	0	0	0	0	0	0	0.00%
04-5-06-51003	R & M-Structures	25,000	500	0	0	378	0	6,668	0	7,546	30.18%
04-5-06-51020	R & M-Pipelines	5,000	0	0	0	0	0	0	0	0	0.00%
04-5-06-51021	R & M-Service Lines	5,000	0	0	0	0	0	0	0	0	0.00%
04-5-06-51022	R & M-Fire Hydrants	1,000	0	0	0	0	0	0	0	0	0.00%
04-5-06-51030	R & M-Meters	500	0	0	0	0	0	0	0	0	0.00%
04-5-06-51140	General Supplies & Expenses	250	0	0	0	0	0	0	0	0	0.00%
04-5-06-54002	Dues & Subscriptions	750	0	0	0	0	0	0	748	748	99.67%
04-5-06-54005	Computer Expense	1,000	0	0	1,167	1,711	0	0	0	2,878	287.79%
04-5-06-54011	Printing & Publications	250	0	0	0	0	0	0	0	0	0.00%
04-5-06-54012	Education & Training	2,500	0	0	0	1,200	0	1,420	0	2,620	104.80%
04-5-06-54014	Public Relations	5,000	128	662	312	984	0	0	0	2,085	41.71%
04-5-06-54016	Travel Related Expenses	1,500	0	0	0	664	0	0	0	664	44.26%
04-5-06-54017	Certifications & Renewals	250	0	0	0	0	0	0	0	0	0.00%
04-5-06-54019	Licenses & Permits	2,500	0	0	0	0	0	0	0	0	0.00%
04-5-06-54020	Meeting Related Expenses	500	0	0	0	0	133	177	35	344	68.88%
04-5-06-54025	Telephone	500	60	55	55	58	55	0	0	282	56.46%
04-5-06-54010	Contractual Services	1,750	0	0	0	0	0	0	1,605	1,605	91.71%
04-5-06-54107	Legal	2,000	0	0	0	0	0	0	0	0	0.00%
04-5-06-54109	Professional Fees	10,000	791	723	299	3,757	1,449	0	0	7,019	70.19%
04-5-06-54110	Laboratory Services	1,000	0	0	0	0	0	0	0	0	0.00%
04-5-06-55500	Depreciation	7,900	662	662	662	662	662	662	662	4,634	58.66%
	Infrastructure Replacement	52,920	4,410	4,410	4,410	4,410	4,410	4,410	4,410	30,870	58.33%
04-5-06-57030	Regulatory Compliance	20,000	0	0	0	0	0	0	0	0	0.00%
	TOTAL RECYCLED WATER EXPENSES	265,250	6,921	6,882	7,274	14,194	7,080	13,707	7,830	63,887	24.09%



Date: February 7, 2012

Subject: Denial of Claim Related to Lack of Water Pressure at 13058 Fifth Street, Yucaipa

On December 20, 2011, the District received a claim from Deborah Young-Whisenhunt for \$80.00 for a plumber's visit to the residence located at 13058 Fifth Street, Yucaipa because of a lack of water pressure. The claim states that the residence had normal water pressure until the District crews began working on the water service line, relocating the meter located in the yard and inside a fence to curbside. Ms. Young-Whisenhunt alleges that the District crews had turned off the water shut-off valve at the house while performing the relocation work, and had forgotten to turn the valve back on, resulting in the loss of water pressure. As a result of the pressure loss, Ms. Young-Whisenhunt had to call a plumber, who found the shutoff valve at the house closed and turned the valve on.

I investigated the claim, visiting the residence, speaking with Ms. Young-Whisenhunt, the plumber, and the District personnel who were working on the water meter relocation. The District staff working on the meter relocation stated they did not turn the shut-off valve off, as it is normal procedure to turn the District-side valve off and not do work or turn valves on the property owner side of the water meter. The plumber confirmed that the only work he performed was locating the shut-off valve and opening it. The shut-off valve at the house is not easily located, being partially buried. It is District policy to turn the water off using the District side shutoff valves and not work on the property owner side of the meter.

Therefore, District staff recommends denial of the claim.



Yucaipa Valley Water District

12770 Second Street • P.O. Box 458 • Yucaipa, CA 92399 • (714) 797-5117

RECEIVED

DEC 20 2011

YUCAIPA VALLEY WATER DISTRICT

CLAIM FOR DAMAGES TO PERSON OR PROPERTY

INSTRUCTIONS

1. Claims for death, injury to person or to personal property must be filed not later than six months after the occurrence. (Gov. Code Sec. 911.2)
2. Claims for damages relating to any other cause of action must be filed not later than 1 year after the occurrence. (Gov. Code Sec. 911.2)
3. Read entire claim before filing.
4. See Page 2 for diagram upon which to locate place of accident.
5. This claim form must be signed on page 2 at bottom.
6. Attach separate sheets, if necessary, to give full details. SIGN EACH SHEET.
7. Claim must be filed with Board Secretary.

Name of Claimant

Deborah Young - Whisenhunt

Home Address of Claimant

City and State

13058 5th St

Yucaipa Ca 92399

Home Telephone Number

Business Telephone Number

909-795-4949

Business Address of Claimant

City and State.

Give address to which you desire notices or communications to be sent regarding this claim:

Same as Above

When did DAMAGE or INJURY occur?

Date: 12/19/11

Time: 12:00 p.m.

How did DAMAGE or INJURY occur? Give full particulars.

they turned off water valve to house and never turned back on.

Where did DAMAGE or INJURY occur? Describe fully, and locate on diagram on reverse side of this sheet. Where appropriate, give street names and addresses and measurements from landmarks:

Valve by water heater turned off and had to call plumber to find problem

What particular ACT or OMISSION do you claim caused the injury or damage? Give names of District employees causing the injury or damage, if known:

turned off water valve had no water pressure for a day
What DAMAGE or INJURIES do you claim resulted? Give full extent of injuries or damages claimed:

had to call plumber and pay 80.00
What AMOUNT do you claim on account of each item of injury or damage as of the date of presentation of this claim, giving basis of computation:

\$80.00

Give ESIMATED AMOUNT as far as known, that you claim on account of each item of prospective injury or damage, giving basis of computation:

\$80.00

Name and address of Witnesses, Doctors and Hospitals

READ CAREFULLY

For all accident claims place on following diagram names of streets, including North, East, South, and West: indicate place of accident by "X" and by showing house numbers of distances to street corners. If District Vehicle was involved, designate by letter "A" location of District vehicle when you first saw it, and by "B" location of yourself or your vehicle when you first saw District vehicle: location of District vehicle at time of accident by "A-1" and location of yourself or your vehicle at the time of the accident by "B-1" and the point of impact by "X".

NOTE: If diagrams below do not fit the situation, attach hereto a proper diagram signed by claimant.

FOR AUTOMOBILE ACCIDENTS		
Signature of Claimant or person filing on his behalf giving relationship to Claimant:	Typed Name	Date

NOTE: Presentation of a false claim is a felony (Cal. Pen. Code Sec. 72) CLAIMS MUST BE FILED WITH BOARD SECRETARY



34625 Cedar Ave.
 Yucaipa, CA 92399
 Phone: (909) 425-2189 • Fax (909) 790-5925
 CA Lic 761610

Name _____ Bill to _____
 Job at _____ at 13058 5th
 City Yucaipa Zip _____
 P.O. # _____

WORKMAN Bill
 Old Customer New Customer
 Classification _____
 Telephone _____

DATE 12-19-11

Describe Fully: Nature of Work Done, and Specify Exact Location of Each Fixture or Repair Made. Continue on Reverse Side if Necessary

Time	From	To	Hours	MATERIAL USED	Amount
Mon.				No water pressure to inside of house. After the water co had moved water meter found 3/4 gate valve in off position - at the house - turned on and o.k.	
Tues.					
Wed.					
Thurs.					
Fri.					
Sat.					
Total Hours					
Is work completed?					
Is there a pickup?					
For Office Use Only					
Card Failed					
Ledger Entry Made					
Invoice-Left-Mailed					
<p>NOTICE TO PAYOR * Under the Mechanics' Lien Law (California Code of Civil Procedure, Section 1181 et seq.), any contractor, subcontractor, laborer, supplier or other person who helps to improve your property but is not paid for his work or supplies, has a right to enforce a claim against your property. This means that, after a court hearing, your property could be sold by a court officer and the proceeds of the sale used to satisfy the indebtedness. This can happen even if you have paid your own contractor in full, if the subcontractor, laborer or supplier remains unpaid.*</p>					
<p>TO OUR CUSTOMERS: Service men are required to have work slip signed. This is done in order to protect you, the workmen and ourselves, and to enable us to give you absolute satisfactory service. You are respectfully requested to examine material and labor statement before workmen leave the job, and if you find everything satisfactory, okay this ticket. If service is unsatisfactory, in any way, please phone our office immediately. I find the time and material charged above satisfactory and agree to pay for same on presentation of invoice, and further agree to pay reasonable charges for collection, including attorneys fees in the event of my default. A delinquent penalty will be charged if account is past due.</p>					
<p>*Any controversy or claim arising out of or relating to this contract, or any claim for damages or compensation, shall be referred to and finally decided by arbitration in accordance with the Uniform Rules for Better Business Bureau Arbitration, and the judgment upon the award rendered by the Arbitrator(s) may be entered in any Court having jurisdiction thereof.*</p>					
<p>Contractors are required by law to be licensed and regulated by the Contractors' State License Board. Any questions concerning a contractor may be referred to the registrar of the board whose address is: Contractors' State License Board 1020 N Street Sacramento, California 95814</p>					
<p>Signed _____ By _____</p>					
<p>Material _____ Tax - Insurance _____ Service _____ Permits _____ Truck - Equipment _____</p>					
<p>TOTAL</p>				80	00

TO: John Hull

FROM: Joe DeSalliers

DATE: 12/21/11

SUBJECT: 13058 5th St claim form

I was assigned to relocate a customer's water service from behind the fence at 13058 5th Street, so the meter shop would have access to read the meter without having to notify the customer. On December 19, 2011, I sent Ron Elisalda & Matt Flordelis to hand dig from their meter to outside the fence area, in preparation to move there meter the following day. When I arrived at 2:30 to help with this project; the customer came out and ask if we had shut off the water. He explained to me that he had water but his pressure inside the house was dropping off. I explained to him that we had not shut off any valves and were just preparing to move his meter to outside the fence. At this time we checked his pressure outside of the house and it was 85 lbs. I asked him if he had a pressure regulator, he did not know. I then explained to him that it could be a pressure regulator going bad, and then tried to help him find the regulator with no success. I asked him how long this has been going on; he said it started that day. I then told him that we do not repair anything on his side of the meter and would have to call a plumber. At this point he did not say anything and went inside the house. Customer called the District office and was told to come in to fill out a claim form.

I have read the claim form and at the time that this occurred, my team had gone to lunch. The plumber found a valve somewhere next to the house half open, as I said we did not turn any valves at this property on day in question.