



Yucaipa Valley Water District

12770 Second Street, Yucaipa, California 92399 Phone: (909) 797-5117

Notice and Agenda of a Regular Meeting of the Board of Directors

Wednesday, August 15, 2012 at 6:00 p.m.

- I. CALL TO ORDER - Pledge of Allegiance
- II. ROLL CALL
- III. PUBLIC COMMENTS - At this time, members of the public may address the Board of Directors on matters within its jurisdiction. To provide comments on specific agenda items, please complete a speaker's request form and provide the completed form to the Board Secretary prior to the board meeting.
- IV. CONSENT CALENDAR - All matters listed under the Consent Calendar are considered by the Board of Directors to be routine and will be enacted in one motion. There will be no discussion of these items prior to the time the board considers the motion unless members of the board, the administrative staff, or the public request specific items to be discussed and/or removed from the Consent Calendar. The General Manager recommends approval of the following:
 - A. Minutes of Meetings
 - 1. Regular Board Meeting - July 18, 2012
 - B. Payment of Bills
 - 1. Approve/Ratify Invoices of Board Awarded Contracts
 - 2. Ratify General Expenses for July 2012
- V. BOARD REPORTS
 - A. San Bernardino Valley Municipal Water District Advisory Commission on Water Policy - August 9, 2012
 - B. Reports by Board Members
- VI. STAFF REPORT
- VII. DISCUSSION ITEMS
 - A. Unaudited Financial Report for the Period Ending July 31, 2012 [[Director Memorandum No. 12-068 - Page 19 of 93](#)]
 - RECOMMENDED ACTION: That the Board receives and files the unaudited financial report as presented.

Any person with a disability who requires accommodation in order to participate in this meeting should telephone Chelsie Fogus at (909) 797-5118 at least 48 hours prior to the meeting in order to make a request for a disability-related modification or accommodation.

Materials related to an item on this agenda submitted to the Board of Directors after distribution of the board meeting packet are available for public inspection during normal business hours at the District office located at 12770 Second Street, Yucaipa. Meeting material may also be available on the District's website at www.yvwd.dst.ca.us

- B. Claim for Damages at 11976 California Street, Yucaipa due to Water Mainline Break [[Director Memorandum No. 12-069 - Page 45 of 93](#)]
RECOMMENDED ACTION: That the Board denies the claim for damages at property located at 11976 California Street, Yucaipa.
- C. Claim for Damages at 11666 Pendleton Avenue, Yucaipa due to Water Mainline Break [[Director Memorandum No. 12-070 - Page 71 of 93](#)]
RECOMMENDED ACTION: That the Board denies the claim for damages at property located at 11666 Pendleton Avenue, Yucaipa.
- D. Award of a Construction Contract for the Crow Street Non-Potable Water Pipeline [[Director Memorandum No. 12-071 - Page 89 of 93](#)]
RECOMMENDED ACTION: That the Board awards a construction contract to Pro-Craft Construction, Inc. for a sum not to exceed \$1,064,160

VIII. DIRECTORS COMMENTS

IX. CLOSED SESSION

- A. Conference with Real Property negotiator(s) (Government Code 54956.8)
Property: Assessor's Parcel Number: 301-201-29
Agency Negotiator: Joseph Zoba, General Manager
Negotiating Parties: Palmer General Corporation
Under Negotiation: Terms of Payment and Price
- B. Conference with Labor Negotiator (Government Code 54957.6)
District Negotiator: Joseph Zoba, General Manager
Employee Organization: IBEW Local Union 1436 - YVWD Employees Association
- C. Conference with Labor Negotiator (Government Code 54957.6)
District Negotiator: Joseph Zoba, General Manager
Employee Organization: Supervisor Bargaining Unit
- D. Conference with Labor Negotiator (Government Code 54957.6)
District Negotiator: Joseph Zoba, General Manager
Employee Organization: Exempt Employee Bargaining Unit

X. ANNOUNCEMENTS

- A. August 28, 2012 at 4:00 p.m. - Board Workshop
- B. September 5, 2012 at 5:45 p.m. - Yucaipa Valley Water District Financing Corporation
- C. September 5, 2012 at 6:00 p.m. - Regular Board Meeting
- D. September 11, 2012 at 4:00 p.m. - Board Workshop
- E. September 19, 2012 at 6:00 p.m. - Regular Board Meeting
- F. September 25, 2012 at 4:00 p.m. - Board Workshop
- G. October 3, 2012 at 6:00 p.m. - Regular Board Meeting

XI. ADJOURNMENT

CONSENT CALENDAR

MINUTES OF A REGULAR BOARD MEETING

July 18, 2012

Directors Present:

Jay Bogh, President
Bruce Granlund, Vice President
Ian Cuthbertson, Director
Lonni Granlund, Director

Staff Present:

Joseph Zoba, General Manager
Jack Nelson, Assistant Manager
Vicky Elisalda, Controller
Jennifer Ares, Resource Sustainability Manager
Bob Wall, Operations Manager

Directors Absent:

Hank Wochholz, Director

Consulting Staff Present:

David Wysocki, Legal Counsel

Registered Guests and Others Present:

Mark Gardner, Customer

The regular meeting of the Board of Directors of the Yucaipa Valley Water District was called to order by Director Jay Bogh at 6:00 p.m. on Wednesday, July 18, 2012 at the Administrative Office Building, 12770 Second Street, Yucaipa, California.

CALL TO ORDER

Director Jay Bogh led the pledge of allegiance.

FLAG SALUTE

The roll was called and Director Jay Bogh, Director Ian Cuthbertson, Director Bruce Granlund, Director Lonni Granlund were present. Director Hank Wochholz was absent

ROLL CALL

Director Jay Bogh welcomed the audience member. There were no public comments.

PUBLIC COMMENTS

Director Bruce Granlund moved to approve the consent calendar and Director Lonni Granlund seconded the motion.

CONSENT CALENDAR

- A. Minutes of Meetings
 1. Regular Board Meeting - June 20, 2012
 2. Board Workshop - June 26, 2012
 3. Board Workshop - July 10, 2012

The consent calendar was approved by a vote of 4 - 0.

Director Ian Cuthbertson reported on the Regional Water Workshop at the City of Banning on June 28, 2012. The meeting provided an opportunity for Jeff Davis, General Manager of the San Gorgonio Pass Water Agency to provide information about the future plans of the agency.

BOARD REPORTS

Director Lonni Granlund reported on the City of Yucaipa Economic Development Advisory Committee at the City of Yucaipa on July 12, 2012. The meeting participants discussed the Uptown Music and Arts Festival, the Santa Ana Regional Interceptor Market Analysis, the Dunlap Corridor Transportation Planning Grant, and other projects and programs.

No report was provided for the Association of San Bernardino County Special Districts meeting held on July 16, 2012.

General Manager Joseph Zoba briefly discussed recent issues including the schedule of future board meetings and workshop when a quorum of board members would not be available to conduct business.

STAFF REPORT

DISCUSSION ITEMS:

Following a staff presentation by Controller Vicky Elisalda, Director Lonni Granlund moved and Director Bruce Granlund seconded a motion to receive and file the unaudited financial report as presented. The motion was approved by a vote of 4 - 0.

DM 12-057
UNAUDITED FINANCIAL
REPORT FOR THE PERIOD
ENDING ON JUNE 30, 2012

Following a staff presentation by Controller Vicky Elisalda and a discussion with Mr. Mark Gardner regarding relief for homes in probate, Director Ian Cuthbertson moved and Director Lonni Granlund seconded a motion to adopt Resolution 2012-10 for San Bernardino County and Resolution 2012-11 for Riverside County posting delinquent charges to property taxes. The motion was approved by a vote of 4 - 0.

DM 12-058
AUTHORIZATION TO POST
DELINQUENT ACCOUNTS
TO THE PROPERTY TAX
ROLLS OF SAN
BERNARDINO COUNTY
AND RIVERSIDE COUNTY

Following a staff presentation by Controller Vicky Elisalda, Director Ian Cuthbertson moved and Director Bruce Granlund seconded a motion to adopt Resolution No. 2012-13 as presented. The motion was approved by a vote of 4 - 0.

DM 12-059
ADOPTION OF
RESOLUTION NO. 2012-13
ESTABLISHING THE
APPROPRIATION LIMIT
FOR FISCAL YEAR 2012-13

Following a staff presentation by General Manager Joseph Zoba, Director Bruce Granlund moved and Director Lonni Granlund seconded a motion to select Manuel Aranda from the San Bernardino Valley Water Conservation District as the California Special District Association representative for Region 5 - Seat A. The motion was approved by a vote of 4 - 0.

DM 12-060
ELECTION OF THE
CALIFORNIA SPECIAL
DISTRICT ASSOCIATION
BOARD OF DIRECTORS
REGION 5 - SEAT A

Following a staff presentation by General Manager Joseph Zoba, Director Lonni Granlund moved and Director Ian Cuthbertson seconded a motion to authorize the District staff to increase the previously approved purchase of 2,500 acre feet of imported water to 3,000 acre feet of imported water as a partner in the 2012 Cooperative Groundwater

DM 12-061
PARTICIPATION IN THE
2012 COOPERATIVE
GROUNDWATER

Recharge Program for a sum not to exceed \$225,000. The motion was approved by a vote of 4 - 0.

RECHARGE PROGRAM
WITH THE
SAN BERNARDINO VALLEY
MUNICIPAL WATER
DISTRICT

Following a staff presentation by General Manager Joseph Zoba, Director Bruce Granlund moved and Director Ian Cuthbertson seconded a motion to approve Development Agreement No. 2012-03 as presented. The motion was approved by a vote of 4 - 0.

DM 12-062
AGREEMENT TO PROVIDE
SEWER SERVICE TO THE
PROPOSED COMMERCIAL
DEVELOPMENT LOCATED
AT THE INTERSECTION OF
15TH STREET AND YUCAIPA
BOULEVARD, YUCAIPA
(ASSESSOR'S PARCEL
NUMBER 0301-041-23) -
DEVELOPMENT
AGREEMENT NO. 2012-
03

Following a staff presentation by General Manager Joseph Zoba, Director Ian Cuthbertson moved and Director Bruce Granlund seconded a motion to approve Task Order No. 12 for a sum not to exceed \$53,900. The motion was approved by a vote of 4 - 0.

DM 12-063
TASK ORDER NO. 12 TO
KRIEGER & STEWART FOR
THE DESIGN OF SEWER
COLLECTION FACILITIES
IN WESTERN YUCAIPA

Following a staff presentation by Resource Sustainability Manager Jennifer Ares, Director Ian Cuthbertson moved and Director Lonni Granlund seconded a motion to authorize District staff to implement a water use efficiency rebate program for a sum not to exceed \$50,000 for the current fiscal year. The motion was approved by a vote of 4 - 0.

DM 12-064
IMPLEMENTATION OF A
WATER USE EFFICIENCY
REBATE PROGRAM FOR
THE YUCAIPA VALLEY
WATER DISTRICT

Following a staff presentation by Resource Sustainability Manager Jennifer Ares, Director Lonni Granlund moved and Director Ian Cuthbertson seconded a motion to approve Amendment No. 2 to approve Resolution No. 2012-12 as presented. The motion was approved by a vote of 4 - 0.

DM 12-065
ADOPTION OF
RESOLUTION NO. 2012-12
APPROVING AND
SUPPORTING AN
APPLICATION TO THE
CALIFORNIA DEPARTMENT
OF WATER RESOURCES
FOR A LOCAL
GROUNDWATER
ASSISTANCE GRANT

Following a staff presentation by Assistant General Manager Jack Nelson, Director Ian Cuthbertson moved and Director Bruce Granlund seconded a motion to approve Task Order No. 25 for a sum not to exceed \$57,730. The motion was approved by a vote of 4 - 0.

DM 12-066
TASK ORDER NO. 25 TO
RMC WATER &
ENVIRONMENT TO ASSIST
WITH DIGESTER
CLEANING AND A SOLIDS
PROCESS CONDITION
ASSESSMENT

Following a staff presentation by Operations Manager Bob Wall, Director Lonni Granlund moved and Director Ian Cuthbertson seconded a motion to approve Task Order No. 2 for a sum not to exceed \$23,000. The motion was approved by a vote of 4 - 0.

DM 12-067
TASK ORDER NO. 2 TO
HARPER & ASSOCIATES
ENGINEERING FOR
PROFESSIONAL SERVICES
RELATED TO THE
PREPARATION OF
TECHNICAL
SPECIFICATIONS AND
CONSTRUCTION
SERVICES FOR THE
RECOATING OF
RESERVOIR R-13.2

There were not comments from the board members.

DIRECTOR COMMENTS

There was no closed session conference with legal counsel.

CLOSED SESSION

Director Jay Bogh directed attention to the announcements located on the board meeting agenda.

ANNOUNCEMENTS

There being no further business, the meeting was adjourned at 7:04 p.m.

Respectfully submitted,

Joseph B. Zoba, Secretary

(Seal)

Board Awarded Contracts
Consent Calendar Regular Meeting -August 15, 2012

District Awarded Contracts	Director Memorandum	Job or GL No.	Job Cost Breakdown	Awarded Contract Amount	Prior Payments to Date	Pending Invoice Amount	Total Contract Payments	Remaining Contract Amount	Percent Remaining	Encumbered Funds - Remaining Contract Amount			
										General Operating Expenses	Water Division Funds	Sewer Division Funds	Non-Potable Division Funds
Aklufi & Wysocki - FY 2013 Legal Services	--	*-5-06-54107	--	--	\$0	\$4,615	\$4,615						
DOB Engineering Prep of the Discharge Permit Appl for WRWRF	10-070	03-5-06-54109		\$44,300	\$30,849	\$0	\$30,849	\$13,451	30%	\$13,451			
Delta Partners \$90,000 per year - Legislative Consult (exp 12/13) W/S	09-007	*-5-06-54109	--	\$90,000	\$45,000	\$7,500	\$52,500	\$37,500	42%	\$37,500			
Doty Bros. Equipment Co.	12-033	04-xxxx		\$1,889,000	\$156,086	\$211,233	\$367,319	\$1,521,681	81%				\$1,521,681
Dudek & Associates Recycle Water Phase II - Non-Potable & Brineline Project - Design (EPA)	07-080 07-123 08-038 08-088 08-089 09-070 09-070 09-079 10-005 10-007 10-008 10-008 10-037 10-038 10-084 11-032 11-083	65-178	\$415,040 \$34,920 \$79,920 \$1,267,407 \$37,539 \$34,865 \$50,900 \$57,848 \$8,840 \$4,950 \$35,800 \$49,760 \$24,278 \$46,764 \$71,000	\$2,219,831	\$2,163,045	\$0	\$2,163,045	\$56,786	3%	\$56,786			
Design of Crow Street Infrastructure	11-073	04-5181		\$70,008	\$69,997	\$0	\$69,997	\$11	0%				\$11
TO#2. Environmental requirements for SCRAM project	10-064	88-5399		\$3,750	\$3,720	\$0	\$3,720	\$30	1%	\$30			
TO#3 (was TO#1, Amend 15)	11-082	03-7388	\$36,010	\$55,785	\$55,293	\$0	\$55,293	\$492	1%				\$492
TO#3. Amendment #1 Biological Monitoring During Brineline Construction	12-010	03-7388	\$19,775										
TO#4 Biological Monitoring During Brineline Construction	11-096	03-7388		\$96,864	\$31,320	\$0	\$31,320	\$65,544	68%				\$65,544
Environmental Services for the BCY Non-Potable Water Ext.	11-018	04-9435		\$53,454	\$50,107	\$0	\$50,107	\$3,347	6%				\$3,347
Review & Update local pretreatment limits Ham Radio Outlet, Inc./Bear Communications Emergency Radio Communication Equipment	09-105 11-074	03-5-06-54109 0*-5-06-51120		\$30,700 \$19,500	\$24,438 \$11,078	\$0 \$0	\$24,438 \$11,078	\$6,263 \$8,422	20% 43%	\$6,263 \$8,422			
Harper & Associates Engineering Prep of Tech Specs & Const Svcs for the Recoating of R13.2	12-067	65-12832		\$23,000	\$0	\$0	\$0	\$23,000	100%				\$23,000
Krieger & Stewart TO#5. Design R-13.4 and H-2 Reservoirs for JP Ranch 60% R-13.4 and 40% H-2	05-083 05-083	65-180 65-179	\$47,400 \$31,600	\$79,000	\$50,471	\$0	\$50,471	\$28,529	36%				\$28,529
TO#6. Design of the Recycled Water R-10.3 and Booster Facility TO#9. Const Mgmt Svcs related to R-10.3 and Booster Facility	11-036 12-011	04-9945	\$233,500 \$457,700	\$691,200	\$406,369	\$29,865	\$436,254	\$254,946	37%				\$254,946
TO#7. Design of a 24" Recycled Water Pipeline	11-091	04-9435		\$220,800	\$185,708	\$0	\$185,708	\$35,092	16%				\$35,092
TO#8. Design of the Recycled Water 12.1 Booster Pump Station TO#10. Const Mgmt Svcs for Recycled Water 12.1 Booster Station	11-102 12-048	04-11107	\$178,000 \$220,400	\$398,400	\$206,894	\$23,310	\$230,204	\$168,196	42%				\$168,196
Construction Mgmt Svcs for Non-Potable/Outfall	10-022	04-7386	\$979,100	\$2,371,720	\$211,473	\$0	\$211,473	\$381,801	16%				\$381,801

Board Awarded Contracts
Consent Calendar Regular Meeting - August 15, 2012

Encumbered Funds - Remaining Contract Amount															
District Awarded Contracts	Director Memorandum	Job or GL No.	Job Cost Breakdown	Awarded Contract Amount	Prior Payments to Date	Pending Invoice Amount	Total Contract Payments	Remaining Contract Amount	Percent Remaining	General Operating Expenses	Water Division Funds	Sewer Division Funds	Non-Potable Division Funds	Other Funds	
Construction Mgmt Svcs for Brineline Phase 3 Plan Review TO #2 TO#3	11-067 11-081	03-7387 03-7388	\$174,620 \$1,218,000		\$1,553,279 \$161,805	\$63,362 \$0	\$1,616,641 \$161,805								
TO#11, Const Mgmt Svcs for Crow Street Pipeline	12-049	04-5181		\$153,900	\$1,850	\$3,364	\$5,214	\$148,686	97%				\$148,686		
TO#12, Design of Sewer Collection Facilities in Western Yucaipa	12-063	03-12357		\$53,900	\$0	\$0	\$0	\$53,900	100%			\$53,900			
One Stop Landscape Supply - FY 2013 Sludge Hauling & Reuse	--	03-5-02-57031	--	--	\$0	\$25,068	\$25,068								
Pascal & Ludwig Constructors Construction of WISE Project at WWTP	12-024	03-11718		\$5,003,170	\$402,407	\$336,949	\$739,356	\$4,263,814	85%			\$4,263,814			
Platinum Advisors FY 2013 Lobbyist N-T-E per month FY 2013 Quarterly Filing & Misc. Expenses	09-008	02-5-06-54109 02-5-06-54109	-- --	-- --	\$5,000 \$0	\$5,000 \$0	\$10,000 \$0								
W.A. Rasic Construction Construction of Brineline Phase 3 CO #1 - Administrative	11-080 12-027	03-7388		\$9,350,000 \$0	\$8,211,930	\$239,936	\$8,451,865	\$898,135	10%			\$898,135			
RMC Water & Environment TO#10 SRF Assistance	05-125	03-506-54109	\$102,120	\$102,120	\$88,660	\$0	\$88,660	\$13,460	13%	\$13,460					
TO#24, Project Mgmt Serv related to Recycled Water & Brineline TO#24, Amendment #1 TO#24, Amendment #2	10-031 11-110 12-044		\$80,000 \$89,860 \$149,600												
Brineline Phase 1 & 2/Phase 3 Non-Potable/Outfall		03-7387/03-7388 04-7386		\$194,800 \$134,760	\$135,603 \$78,216	\$5,513 \$3,275	\$141,116 \$81,491	\$53,685 \$53,269	28% 40%			\$53,685	\$53,269		
TO#25, Digester Cleaning & a Solids Process Contd Assess	12-066	88-12830		\$57,730	\$0	\$0	\$0	\$57,730	100%			\$57,730			
RSH Construction Construction of the R-10.3 Recycled Water Storage & Booster Complex CO #1 - Administrative	12-002 12-028	04-9945		\$4,177,087 \$0	\$1,547,651	\$253,300	\$1,800,951	\$2,376,136	57%				\$2,376,136		
Separation Processes, Inc. TO#11, Study of Low Pressure Rev Osmosis Membranes at WRWRF	09-018	88-3871 (exp)		\$150,852	\$148,526	\$0	\$148,526	\$2,326	2%	\$2,326					
TO#12, Design Services for Salinity Concentrate Reductions	09-085	88-5399(exp)		\$144,940	\$124,567	\$0	\$124,567	\$20,373	14%	\$20,373					
TO#13, Prelim Eng Analysis of Wochholz Improved Salinity Effluent TO#13, Amendment #1 CAD Design for WISE project TO#13, Amendment #2 CAD Design for WISE project TO#13, Amendment #3 CAD Design for WISE project TO#14, Amendment #4 Elec Impr for WISE project	09-086 10-050 11-046 11-080 12-045	88-5396 (exp)	\$32,500 \$78,132 \$50,000 \$218,371 \$10,000		\$378,800	\$0	\$378,800	\$10,203	3%	\$10,203					
TO#14, Const Mgmt Services for WISE project	12-015	03-11718		\$309,383	\$88,054	\$39,890	\$137,944	\$171,439	55%			\$171,439			
Vavrinek, Trine, Day & Company (VTD) FY 2012 Auditing Services (add \$8500 for Single Audit)	08-079	*-5-06-54108	\$32,745	\$32,745	\$0	\$400	\$400	\$32,345	99%	\$32,345					
Wildermuth Environmental Inc. Monitoring & documenting the District's max benefit commitments	10-060	65-1138		\$10,634	\$8,159	\$0	\$8,159	\$2,475	23%	\$2,475					
GRAND TOTALS				\$28,622,336	\$16,646,376	\$1,252,561	\$17,898,956	\$10,763,063	--	\$146,847	\$23,000	\$5,946,539	\$4,618,148	\$28,529	
											\$10,587,687	\$28,529			

Approval of General Expenses July 2012 (Check Register Attached)

Check Register - July 2012

<u>Check Date</u>	<u>Check Number</u>	<u>Name</u>	<u>Check Amount</u>
07/02/2012	15530	VOID CHECK	0.00
07/02/2012	15531	Incode Division-Tyler Technolo	406.00
07/02/2012	15532	Inland Counties Insurance Serv	203,128.37
07/02/2012	15533	RFI	525.00
07/02/2012	15534	South Coast A.Q.M.D.	610.21
07/02/2012	15535	Spatial Wave, Inc.	4,860.00
07/02/2012	15536	The Gas Company	59.68
07/02/2012	15537	Verizon	559.51
07/02/2012	15538	CA-OCP HEALTH SERVICES	90.00
07/02/2012	15539	Neopost USA Inc.	208.50
07/02/2012	15540	Rodd Greene	402.41
07/02/2012	15541	UnitedHealthcare of California	41,360.38
07/02/2012	15542	Standard Insurance Company	2,076.08
07/02/2012	15543	Western Dental Services, Inc.	212.25
07/02/2012	15544	Robert Hines	402.41
07/02/2012	15545	Anthem Blue Cross L and H	350.60
07/02/2012	15546	Standard Insurance Company	2,864.58
07/02/2012	15547	Standard Insurance Vision Plan	447.76
07/02/2012	15548	MetLife Small Business Center	324.51
07/09/2012	15549	FLORES, ALMA	786.30
07/09/2012	15550	BLH CONSTRUCTION	1,395.17
07/09/2012	15551	CASCADE DRILLING	1,380.04
07/09/2012	15552	COTTEN, KACEY	53.83
07/09/2012	15553	American Water Works Assoc.	98.00
07/09/2012	15554	CA-OCP HEALTH SERVICES	130.00
07/09/2012	15555	State Water Resources Control	190.00
07/09/2012	15556	Water Environment Federation	358.00
07/09/2012	15557	Robert Austin	1,600.00
07/09/2012	15558	Ameripride Uniform Services	427.05
07/09/2012	15559	First American Data Tree, LLC	50.00
07/09/2012	15560	Environmental Systems Research	2,856.00
07/09/2012	15561	InfoSend, Inc.	4,741.91
07/09/2012	15562	Jean's Flower Basket	40.84
07/09/2012	15563	Kelly Services, Inc.	951.20
07/09/2012	15564	NetComp Technologies, Inc.	5,912.24
07/09/2012	15565	SCCI, Inc.	350.00
07/09/2012	15566	Sharp Designs Embroidery	465.48
07/09/2012	15567	Sims Welding & Supply Co., Inc	113.90
07/09/2012	15568	The Gas Company	13.81
07/09/2012	15569	Underground Service Alert Of S	136.50
07/09/2012	15570	George F. Siddle	111.75
07/09/2012	15571	Addiction Medicine Consultants	99.00
07/09/2012	15572	The Counseling Team Internatio	360.00
07/09/2012	15573	Crider Public Relations, Inc.	1,445.00
07/09/2012	15574	Timothy M. Mackamul	250.00
07/09/2012	15575	Matt Anderson	515.04
07/09/2012	15576	Lou Hitter	446.55
07/09/2012	15577	All American Sewer Tools	350.19
07/09/2012	15578	Atlas Copco Compressors, LLC	638.55
07/09/2012	15579	Bear Communications, Inc.	2,586.02
07/09/2012	15580	Brenntag Pacific, Inc	9,303.67
07/09/2012	15581	Innerline Engineering	4,350.00
07/09/2012	15582	JR Freeman Co. Inc.	569.92
07/09/2012	15583	Mechanical Seal Repair, Inc.	358.27
07/09/2012	15584	Merit Oil Company	3,118.19

Check Register - July 2012

<u>Check Date</u>	<u>Check Number</u>	<u>Name</u>	<u>Check Amount</u>
07/09/2012	15585	Pro-Pipe & Supply, Inc.	1,449.59
07/09/2012	15586	Red Alert Special Couriers	42.93
07/09/2012	15587	AWWA CA-NV (Rancho Cucamonga)	110.00
07/13/2012	15588	Workboot Warehouse	289.32
07/13/2012	15589	Economic Development Agency	50.00
07/13/2012	15590	PAYROLL CHECK	2,810.70
07/13/2012	15591	PAYROLL CHECK	755.79
07/13/2012	15592	CA-PERS Supplemental Income 45	13,502.59
07/13/2012	15593	Public Employees' Retirement S	26,785.55
07/13/2012	15594	Hong Nelson	125.00
07/13/2012	15595	Katherine Kostelecky	500.00
07/13/2012	15596	IBEW Local 1436	325.00
07/13/2012	15597	Franchise Tax Board	150.00
07/16/2012	15598	1st Enterprise Bank/Retention	17,135.00
07/16/2012	15599	Aklufi & Wysocki	9,587.50
07/16/2012	15600	California Bank & Trust	65,441.22
07/16/2012	15601	Citizens Business Bank	10,790.16
07/16/2012	15602	Delta Partners, LLC	7,500.00
07/16/2012	15603	Doty Bros. Equipment Co.	100,938.00
07/16/2012	15604	Dudek & Associates, Inc	7,723.11
07/16/2012	15605	Krieger & Stewart	110,963.44
07/16/2012	15606	One Stop Landscape Supply Inc	25,615.00
07/16/2012	15607	Pascal & Ludwig Constructors I	205,013.12
07/16/2012	15608	Platinum Advisors, LLC	5,000.00
07/16/2012	15609	RMC Water and Environment	20,582.50
07/16/2012	15610	Canyon Springs Enterprises	325,565.00
07/16/2012	15611	Separation Processes, Inc.	35,207.42
07/16/2012	15612	W.A. Rasic Construction Co., I	588,970.98
07/16/2012	15613	Ralph C. Casas	70.00
07/16/2012	15614	Ameripride Uniform Services	411.06
07/16/2012	15615	Atlas Copco Compressors, LLC	1,456.05
07/16/2012	15616	Auto Care Clinic	133.96
07/16/2012	15617	Center Electric	2,186.59
07/16/2012	15618	Corelogic, Inc.	300.00
07/16/2012	15619	Coverall North America, Inc.	1,021.00
07/16/2012	15620	H & T Cultural Resource Manage	960.00
07/16/2012	15621	Environmental Systems Research	1,428.00
07/16/2012	15622	Inland Empire Resource Conserv	244.86
07/16/2012	15623	Kelly Services, Inc.	951.20
07/16/2012	15624	King Lee Chemical, Co.	14,204.04
07/16/2012	15625	Konica Minolta Business Soluti	25.88
07/16/2012	15626	LUZ Investment Corp.	80.00
07/16/2012	15627	NAPA Genuine Parts Company	71.64
07/16/2012	15628	Q Versa, LLC	4,034.12
07/16/2012	15629	San Gorgonio Pass Water Agency	3,389.73
07/16/2012	15630	Southern CA Emergency Medicine	150.00
07/16/2012	15631	Troy Alarm, Inc.	201.00
07/16/2012	15632	Verizon	1,090.91
07/16/2012	15633	Yucaipa Disposal, Inc.	1,262.31
07/16/2012	15634	Air & Hose Source, Inc.	117.45
07/16/2012	15635	Auto Care Clinic	153.31
07/16/2012	15636	Brenntag Pacific, Inc	4,265.45
07/16/2012	15637	Calolympic Glove & Safety Co.,	653.25
07/16/2012	15638	Cortech Engineering	1,431.39
07/16/2012	15639	Dinosaur Tire Inc.	18.08

Check Register - July 2012

<u>Check Date</u>	<u>Check Number</u>	<u>Name</u>	<u>Check Amount</u>
07/16/2012	15640	Evans-Hydro Inc.	7,667.57
07/16/2012	15641	Graybar Electric Co., Inc.	40.82
07/16/2012	15642	House Of Quality, Parts Plus	644.16
07/16/2012	15643	Max Machinery, Inc.	683.68
07/16/2012	15644	Merit Oil Company	4,746.79
07/16/2012	15645	MWH Laboratories	1,200.00
07/16/2012	15646	Nagem, Inc.	3,348.58
07/16/2012	15647	NCL Of Wisconsin Inc	366.68
07/16/2012	15648	Roquet Paving Inc	12,853.34
07/16/2012	15649	Siemens Industry, Inc.	1,130.85
07/16/2012	15650	Test America Laboratories, Inc	1,272.00
07/16/2012	15651	Atkinson, Andelson, Loya, Ruud	1,525.28
07/18/2012	15652	NICOARA, ILONA	191.33
07/18/2012	15653	PEREZ, JOSE	90.65
07/18/2012	15654	PERALTA, USIEL	25.23
07/18/2012	15655	DAVIS, JANICE	53.83
07/18/2012	15656	SOLUTIONS INC	111.70
07/18/2012	15657	WACHOVIA	58.82
07/18/2012	15658	COLDWELL BANKER PION	50.43
07/18/2012	15659	WILSON, DELEISE	98.96
07/18/2012	15660	LEE, THOMAS K	91.24
07/18/2012	15661	BUSTAMANTE, ROBERT	50.46
07/18/2012	15662	DE KOCK, RUSSELL	23.42
07/18/2012	15663	ARNETT, AZSAH-LEE	78.26
07/18/2012	15664	FAS-LITTON	39.43
07/23/2012	15665	Ameripride Uniform Services	412.81
07/23/2012	15666	AT&T Mobility	1,847.50
07/23/2012	15667	Central Communications	346.95
07/23/2012	15668	CHJ Consultants	4,554.58
07/23/2012	15669	Fedex	65.88
07/23/2012	15670	Fox Occupational Medical Cente	100.00
07/23/2012	15671	Incode Division-Tyler Technolo	350.00
07/23/2012	15672	InfoSend, Inc.	3,182.26
07/23/2012	15673	Kelly Services, Inc.	737.18
07/23/2012	15674	Krieger & Stewart	7,384.33
07/23/2012	15675	LUZ Investment Corp.	80.00
07/23/2012	15676	Main's Lock Supply Inc.	26.94
07/23/2012	15677	NetComp Technologies, Inc.	2,205.00
07/23/2012	15678	Santa Ana Watershed Project Au	6,725.00
07/23/2012	15679	South Coast A.Q.M.D.	426.41
07/23/2012	15680	Separation Processes, Inc.	1,265.00
07/23/2012	15681	Tattletale Portable Alarm Syst	1,974.00
07/23/2012	15682	Terminix Commercial	582.00
07/23/2012	15683	Thomson West	220.90
07/23/2012	15684	Evimero, LLC	7,925.00
07/23/2012	15685	John F. Baker Jr.	2,200.00
07/23/2012	15686	BofA Credit Card	752.38
07/23/2012	15687	Brenntag Pacific, Inc	17,695.30
07/23/2012	15688	Victor James Valenti	3,570.61
07/23/2012	15689	Frost Company	4,355.00
07/23/2012	15690	Grainger	303.39
07/23/2012	15691	Hach Company	2,843.07
07/23/2012	15692	Inland Water Works Supply Co.	2,231.87
07/23/2012	15693	Innerline Engineering	1,450.00
07/23/2012	15694	JR Freeman Co. Inc.	122.36

Check Register - July 2012

<u>Check Date</u>	<u>Check Number</u>	<u>Name</u>	<u>Check Amount</u>
07/23/2012	15695	Merit Oil Company	1,916.12
07/23/2012	15696	Microflex Corp #774353	1,127.49
07/23/2012	15697	Q Versa, LLC	2,269.91
07/23/2012	15698	Siemens Industry, Inc.	900.58
07/23/2012	15699	Sterling Water Technologies LL	8,923.25
07/23/2012	15700	Troy Alarm, Inc.	174.96
07/23/2012	15701	BofA Credit Card	369.97
07/27/2012	15702	PAYROLL CHECK	2,270.32
07/27/2012	15703	CA-PERS Supplemental Income 45	10,301.71
07/27/2012	15704	Public Employees' Retirement S	26,414.00
07/27/2012	15705	Hong Nelson	125.00
07/27/2012	15706	Katherine Kostelecky	500.00
07/27/2012	15707	IBEW Local 1436	325.00
07/27/2012	15708	Franchise Tax Board	150.00
07/27/2012	15709	American Family Life Assurance	2,439.34
07/27/2012	15710	YVWD-Petty Cash	204.47
07/27/2012	15711	Gregory N. Godwin	295.79
07/27/2012	15712	SeaBright Insurance Company	12,636.00
07/30/2012	15713	Soboba Band of Luiseno Indians	7,362.88
07/30/2012	15714	Tysa Baeumel	130.00
07/30/2012	15715	Matthew Hendrickson	65.00
07/30/2012	15716	Ameripride Uniform Services	420.35
07/30/2012	15717	Burgeson's Heating & Air Cond.	1,139.00
07/30/2012	15718	Daily Journal Corporation	668.80
07/30/2012	15719	House Of Quality, Parts Plus	2,053.62
07/30/2012	15720	Kelly Services, Inc.	951.20
07/30/2012	15721	Konica Minolta Business Soluti	456.75
07/30/2012	15722	Leroy's Landscape Services	5,700.00
07/30/2012	15723	PFM Asset Management LLC	2,000.00
07/30/2012	15724	SCE Rosemead	261,823.67
07/30/2012	15725	Verizon	1,760.19
07/30/2012	15726	Wilbur's	116.31
07/30/2012	15727	Air & Hose Source, Inc.	3.36
07/30/2012	15728	All American Sewer Tools	375.83
07/30/2012	15729	Aqua-Metric Sales Company	1,755.74
07/30/2012	15730	Auto Care Clinic	666.99
07/30/2012	15731	Brenntag Pacific, Inc	4,764.69
07/30/2012	15732	CINTAS First Aid & Safety	309.05
07/30/2012	15733	David Sunden	86.30
07/30/2012	15734	Evans-Hydro Inc.	5,696.24
07/30/2012	15735	George & Vaughn's Inc.	361.63
07/30/2012	15736	Grainger	395.57
07/30/2012	15737	Graybar Electric Co., Inc.	4.11
07/30/2012	15738	Innerline Engineering	1,450.00
07/30/2012	15739	James John Brothers	10,200.00
07/30/2012	15740	JR Freeman Co. Inc.	43.62
07/30/2012	15741	Merit Oil Company	3,215.31
07/30/2012	15742	Microflex Corp #774353	1,127.49
07/30/2012	15743	Moss Bros. Chrysler Jeep Dodge	564.24
07/30/2012	15744	Nagem, Inc.	600.00
07/30/2012	15745	Pro-Pipe & Supply, Inc.	177.92
07/30/2012	15746	R & R Anderson Trucking	2,223.07
07/30/2012	15747	Red Alert Special Couriers	2,257.44
07/30/2012	15748	The Lab Depot, Inc.	350.02
07/30/2012	15749	HD Supply Facilities Maintenanc	2,698.29

Check Register - July 2012

<u>Check Date</u>	<u>Check Number</u>	<u>Name</u>	<u>Check Amount</u>
<u>July 2012 Check Register Total</u>			<u>2,436,378.69</u>

BOARD REPORTS



SAN BERNARDINO VALLEY MUNICIPAL WATER DISTRICT
380 E. Vanderbilt Way, San Bernardino, CA 92408

MEETING OF THE ADVISORY COMMISSION ON WATER POLICY

NOTICE AND AGENDA

7:00 p.m. Thursday, August 9, 2012

CALL TO ORDER/FLAG SALUTE

1. PUBLIC COMMENT

Any person may address the Commission on matters within its jurisdiction.

2. APPROVAL OF MINUTES

A. May 3, 2012, Advisory Commission Meeting (Page 2)

3. PRESENTATIONS

- A. Enhanced Recharge Project
- B. Recycled Water Project
- C. Regional Water Management Plan Recharge Statement
- D. Update on the Santa Ana Sucker Issue

4. FUTURE BUSINESS

A. Identify Items for Future Agendas

5. ADJOURNMENT

Mission Statement

“It shall be the function of the Commission to study and make recommendations to the Board on matters of water policy for the District. The Commission shall study such matters of water policy as are submitted to it by the Board for Consideration and may study such other matters of water policy as the Commission deems appropriate.” SBVMWD Ordinance No. 61, July 6, 1987.

STAFF REPORT

DISCUSSION ITEMS



Director Memorandum 12-068

Date: August 15, 2012

Prepared By: Vicky Elisalda, Controller
Peggy Little, Administrative Supervisor

Subject: Unaudited Financial Report for the Period Ending July 31, 2012

Recommendation: That the Board receives and files the unaudited financial report as presented.

The following unaudited financial report has been prepared by the Administrative Department for your review. The report has been divided into six sections to clearly disseminate information pertaining to the financial status of the District. Please remember that the following financial information has not been audited.

Cash Fund Balance Report

The Cash Fund Balance Report provides a summary of how the total amount of funds maintained by financial institutions is distributed throughout the enterprise and non-enterprise funds of the District. A summary of the report is as follows:

Fund Source	Operating Funds	Restricted Funds	Total Funds
Water Division	\$955,223.20	\$6,614,409.10	\$7,569,632.30
Sewer Division	(\$36,394.86)	\$7,241,858.04	\$7,205,463.18
Recycled Water Division	<u>(\$3,629,270.13)</u>	<u>\$725,742.80</u>	<u>(\$2,903,527.33)</u>
Total	(\$2,710,441.79)	\$14,582,009.94	\$11,871,568.15

Most of the funds reflected in the Cash Fund Balance Report are designated for specific purposes and are therefore restricted, either by law or by District policy.

Check Register

The check register lists each check processed during the month of July 2012. The District processed 220 checks during the month of July for a total sum of \$2,436,378.69. All checks are reviewed by District staff for accuracy and completeness, and usually signed by the General Manager and one Director, but may be signed by two Directors.

The Controller will make any check, invoice or supporting documentation available for review to any board member upon request.

Financial Account Information

The District currently deposits all revenue received into the Deposit Checking account. The General Checking account is used as a sole processing account for all District checks and electronic payroll. The Investment Checking account is used for the purchase and redemption of US treasury notes and bills and for the transfer of LAIF funds. The US treasury notes and bills are booked at cost.

The LAIF investment account is a pooled money account administered by the State of California. Additional information on the LAIF account is provided below in the investment summary report.

Investment Summary

The investment summary report illustrates the District's investments in US treasury notes and bills in addition to the investments held by the Local Agency Investment Fund or LAIF. The yields for the treasury notes and bills are provided for each individual transaction. The historical annual yield for funds invested with LAIF is also provided.

Separate pooled money investment reports prepared by the State of California are maintained by the District and available for review.

Monthly Revenue Allocation

During the month of July 2012 the District received a sum total of \$7,687,696.48 in revenues from the following categories:

- A total of \$1,897,894.84 was received from 14,849 customers for utility bill payments. This is the total amount of utility bill payments received from water, sewer and recycled services.
- A total of \$2,540.50 was received for construction meter deposits, customer deposits and internet fee payments.
- A total of \$103,508.14 was received from miscellaneous water related activities (other than utility bill charges).
- A total of \$5,683,753.00 was received from miscellaneous sewer related activities (other than utility bill charges). This total includes SRF Draw #3 in the amount of \$5,674,682.00.
- A total of \$0.00 was received from miscellaneous recycled related activities (other than utility bill charges).
- The District received Prop 50 draw #11 in the amount of \$601,938 on July 6th and ARRA Draw #24 in the amount of \$196,926 on July 20th.

Fiscal Year 2013 Budget Status

The revenue and expense budget status for the 2013 Fiscal Year is provided for your review.

**Summary of Revenue Budget
As of July 31, 2012 (4% of Budget Cycle)**

<u>Division</u>	<u>Budget Amount</u>	<u>Current Month</u>	<u>Year-To-Date</u>	<u>Percentage</u>
Water	12,302,000	993,890	993,890	8.1
Sewer	10,717,500	886,979	886,979	8.3
Recycled Water	350,575	47,038	47,038	13.4
District Revenue	23,370,075	1,927,907	1,927,907	8.2

**Summary of Water Budget
As of July 31, 2012 (4% of Budget Cycle)**

<u>Department</u>	<u>Budget Amount</u>	<u>Current Month</u>	<u>Year-To-Date</u>	<u>Percentage</u>
Water Resources	4,484,685	149,315	149,315	3.3
Public works	2,184,940	120,379	120,379	5.5
Administration	2,621,350	152,263	152,263	5.8
Long Term Debt	2,931,025	0	0	0.0
Asset Acquisition	80,000	0	0	0.0
TOTAL	12,302,000	421,957	421,957	3.4

**Summary of Sewer Budget
As of July 31, 2012 (4% of Budget Cycle)**

<u>Department</u>	<u>Budget Amount</u>	<u>Current Month</u>	<u>Year-To-Date</u>	<u>Percentage</u>
Treatment	3,325,600	157,822	157,822	4.7
Administration	3,320,320	201,868	201,868	6.1
Environmental Control	1,127,980	26,520	26,520	2.4
Long Term Debt	2,923,600	0	0	0.0
Asset Acquisition	20,000	0	0	0.0
TOTAL	10,717,500	386,210	386,210	3.6

**Summary of Recycled Water Budget
As of July 31, 2012 (4% of Budget Cycle)**

<u>Department</u>	<u>Budget Amount</u>	<u>Current Month</u>	<u>Year-To-Date</u>	<u>Percentage</u>
Administration	350,575	4,932	4,932	1.4
TOTAL	350,575	4,932	4,932	1.4
District Expenses	23,370,075	813,099	813,099	3.5

Investment Policy Disclosure

The District is currently compliant with the portfolio of its Investment Policy and State Law.

The District is using Sandy Gage with Merrill Lynch Wealth Management (Bank of America Corporation) for Treasury investments. The District expects to meet its expenditure requirements for the next six months.

Questions or Comments

If you have any questions about a particular budget account, please do not hesitate to contact the Controller directly. If you need additional information, the members of the Administrative Department would be happy to provide you with any detailed information you may desire.

Cash Fund Balance Report - July 2012

Water Division	GL#	Balance
Project Fund - Encumbered	02-10215	\$ 720,977.22
ID 1 Construction Funds	02-10216	\$ 293,145.85
ID 2 Construction Funds	02-10217	\$ 80,409.31
Depreciation Reserves	02-10310	\$ 2,642,987.43
Infrastructure Reserves	02-10311	\$ 431,635.00
Sustainability Fund	02-10313	\$ 153,815.12
Rate Stabilization Fund	02-10314	\$ 493,209.14
Imported Water Fund - MUNI	02-10315	\$ (406,960.39)
Imported Water Fund - SGPWA	02-10316	\$ 338,927.69
FCC - Debt Service YVRWFF Phase I	02-10401	\$ 59,236.57
FCC - Future YVRWFF Phase II & III	02-10403	\$ 123,690.91
FCC - Recycled System	02-10410	\$ 191,341.27
FCC - Booster Pumping Plants	02-10411	\$ 208,657.98
FCC - Pipeline Facilities	02-10412	\$ 480,023.46
FCC - Water Storage Reservoirs	02-10413	\$ 803,312.54
Operating Funds:		\$ 955,223.20
Total Water Division		\$ 7,569,632.30

Sewer Division	GL#	Balance
Project Fund - Encumbered	03-10215	\$ 751,424.20
Depreciation Reserves	03-10310	\$ 3,082,490.31
Infrastructure Reserves	03-10311	\$ 852,600.00
Rate Stabilization Fund	03-10314	\$ 1,464,313.38
FCC - Debt Service WWTP Expansion & Upgrade	03-10405	\$ 98,670.50
FCC - Future WWTP Expansion	03-10407	\$ 302,927.60
FCC - Sewer Interceptors	03-10415	\$ 151,049.66
FCC - Lift Stations	03-10416	\$ 74,538.16
FCC - Effluent Disposal Facilities	03-10417	\$ 97,895.32
FCC - Salt Mitigation Facilities	03-10418	\$ 365,948.91
Operating Funds:		\$ (36,394.86)
Total Wastewater Division		\$ 7,205,463.18

Recycled Water Division	GL#	Balance
Depreciation Reserves	04-10310	\$ 484,578.00
Infrastructure Reserves	04-10311	\$ 56,720.00
FCC - Recycled System	04-10410	\$ 15,701.85
FCC - Booster Pumping Plants	04-10411	\$ 16,896.35
FCC - Pipeline Facilities	04-10412	\$ 84,084.21
FCC - Water Storage Reservoirs	04-10413	\$ 67,762.39
Operating Funds:		\$ (3,629,270.13)
Total Recycled Water Division		\$ (2,903,527.33)

DISTRICT TOTAL \$ 11,871,568.15

Future Obligations	Due Date	Amount
2004A Bond Payment - Water Division	02/23/2013	\$ 978,462.50
SBVMWD - Prior years SARI Obligation	06/01/2013	\$ 20,000.00
2004A Bond Payment - Water Division	08/27/2012	\$ 1,952,562.50
SRF Payment - Sewer Division	09/10/2012	\$ 2,923,688.75

Check Register - July 2012

<u>Check Date</u>	<u>Check Number</u>	<u>Name</u>	<u>Check Amount</u>
07/02/2012	15530	VOID CHECK	0.00
07/02/2012	15531	Incode Division-Tyler Technolo	406.00
07/02/2012	15532	Inland Counties Insurance Serv	203,128.37
07/02/2012	15533	RFI	525.00
07/02/2012	15534	South Coast A.Q.M.D.	610.21
07/02/2012	15535	Spatial Wave, Inc.	4,860.00
07/02/2012	15536	The Gas Company	59.68
07/02/2012	15537	Verizon	559.51
07/02/2012	15538	CA-OCP HEALTH SERVICES	90.00
07/02/2012	15539	Neopost USA Inc.	208.50
07/02/2012	15540	Rodd Greene	402.41
07/02/2012	15541	UnitedHealthcare of California	41,360.38
07/02/2012	15542	Standard Insurance Company	2,076.08
07/02/2012	15543	Western Dental Services, Inc.	212.25
07/02/2012	15544	Robert Hines	402.41
07/02/2012	15545	Anthem Blue Cross L and H	350.60
07/02/2012	15546	Standard Insurance Company	2,864.58
07/02/2012	15547	Standard Insurance Vision Plan	447.76
07/02/2012	15548	MetLife Small Business Center	324.51
07/09/2012	15549	FLORES, ALMA	786.30
07/09/2012	15550	BLH CONSTRUCTION	1,395.17
07/09/2012	15551	CASCADE DRILLING	1,380.04
07/09/2012	15552	COTTEN, KACEY	53.83
07/09/2012	15553	American Water Works Assoc.	98.00
07/09/2012	15554	CA-OCP HEALTH SERVICES	130.00
07/09/2012	15555	State Water Resources Control	190.00
07/09/2012	15556	Water Environment Federation	358.00
07/09/2012	15557	Robert Austin	1,600.00
07/09/2012	15558	Ameripride Uniform Services	427.05
07/09/2012	15559	First American Data Tree, LLC	50.00
07/09/2012	15560	Environmental Systems Research	2,856.00
07/09/2012	15561	InfoSend, Inc.	4,741.91
07/09/2012	15562	Jean's Flower Basket	40.84
07/09/2012	15563	Kelly Services, Inc.	951.20
07/09/2012	15564	NetComp Technologies, Inc.	5,912.24
07/09/2012	15565	SCCI, Inc.	350.00
07/09/2012	15566	Sharp Designs Embroidery	465.48
07/09/2012	15567	Sims Welding & Supply Co., Inc	113.90
07/09/2012	15568	The Gas Company	13.81
07/09/2012	15569	Underground Service Alert Of S	136.50
07/09/2012	15570	George F. Siddle	111.75
07/09/2012	15571	Addiction Medicine Consultants	99.00
07/09/2012	15572	The Counseling Team Internatio	360.00
07/09/2012	15573	Crider Public Relations, Inc.	1,445.00
07/09/2012	15574	Timothy M. Mackamul	250.00
07/09/2012	15575	Matt Anderson	515.04
07/09/2012	15576	Lou Hitter	446.55
07/09/2012	15577	All American Sewer Tools	350.19
07/09/2012	15578	Atlas Copco Compressors, LLC	638.55
07/09/2012	15579	Bear Communications, Inc.	2,586.02
07/09/2012	15580	Brenntag Pacific, Inc	9,303.67
07/09/2012	15581	Innerline Engineering	4,350.00
07/09/2012	15582	JR Freeman Co. Inc.	569.92
07/09/2012	15583	Mechanical Seal Repair, Inc.	358.27
07/09/2012	15584	Merit Oil Company	3,118.19
07/09/2012	15585	Pro-Pipe & Supply, Inc.	1,449.59
07/09/2012	15586	Red Alert Special Couriers	42.93

Check Register - July 2012

<u>Check Date</u>	<u>Check Number</u>	<u>Name</u>	<u>Check Amount</u>
07/09/2012	15587	AWWA CA-NV (Rancho Cucamonga)	110.00
07/13/2012	15588	Workboot Warehouse	289.32
07/13/2012	15589	Economic Development Agency	50.00
07/13/2012	15590	PAYROLL CHECK	2,810.70
07/13/2012	15591	PAYROLL CHECK	755.79
07/13/2012	15592	CA-PERS Supplemental Income 45	13,502.59
07/13/2012	15593	Public Employees' Retirement S	26,785.55
07/13/2012	15594	Hong Nelson	125.00
07/13/2012	15595	Katherine Kostelecky	500.00
07/13/2012	15596	IBEW Local 1436	325.00
07/13/2012	15597	Franchise Tax Board	150.00
07/16/2012	15598	1st Enterprise Bank/Retention	17,135.00
07/16/2012	15599	Aklufi & Wysocki	9,587.50
07/16/2012	15600	California Bank & Trust	65,441.22
07/16/2012	15601	Citizens Business Bank	10,790.16
07/16/2012	15602	Delta Partners, LLC	7,500.00
07/16/2012	15603	Doty Bros. Equipment Co.	100,938.00
07/16/2012	15604	Dudek & Associates, Inc	7,723.11
07/16/2012	15605	Krieger & Stewart	110,963.44
07/16/2012	15606	One Stop Landscape Supply Inc	25,615.00
07/16/2012	15607	Pascal & Ludwig Constructors I	205,013.12
07/16/2012	15608	Platinum Advisors, LLC	5,000.00
07/16/2012	15609	RMC Water and Environment	20,582.50
07/16/2012	15610	Canyon Springs Enterprises	325,565.00
07/16/2012	15611	Separation Processes, Inc.	35,207.42
07/16/2012	15612	W.A. Rasic Construction Co., I	588,970.98
07/16/2012	15613	Ralph C. Casas	70.00
07/16/2012	15614	Ameripride Uniform Services	411.06
07/16/2012	15615	Atlas Copco Compressors, LLC	1,456.05
07/16/2012	15616	Auto Care Clinic	133.96
07/16/2012	15617	Center Electric	2,186.59
07/16/2012	15618	Corelogic, Inc.	300.00
07/16/2012	15619	Coverall North America, Inc.	1,021.00
07/16/2012	15620	H & T Cultural Resource Manage	960.00
07/16/2012	15621	Environmental Systems Research	1,428.00
07/16/2012	15622	Inland Empire Resource Conserv	244.86
07/16/2012	15623	Kelly Services, Inc.	951.20
07/16/2012	15624	King Lee Chemical, Co.	14,204.04
07/16/2012	15625	Konica Minolta Business Soluti	25.88
07/16/2012	15626	LUZ Investment Corp.	80.00
07/16/2012	15627	NAPA Genuine Parts Company	71.64
07/16/2012	15628	Q Versa, LLC	4,034.12
07/16/2012	15629	San Gorgonio Pass Water Agency	3,389.73
07/16/2012	15630	Southern CA Emergency Medicine	150.00
07/16/2012	15631	Troy Alarm, Inc.	201.00
07/16/2012	15632	Verizon	1,090.91
07/16/2012	15633	Yucaipa Disposal, Inc.	1,262.31
07/16/2012	15634	Air & Hose Source, Inc.	117.45
07/16/2012	15635	Auto Care Clinic	153.31
07/16/2012	15636	Brenntag Pacific, Inc	4,265.45
07/16/2012	15637	Calolympic Glove & Safety Co.,	653.25
07/16/2012	15638	Cortech Engineering	1,431.39
07/16/2012	15639	Dinosaur Tire Inc.	18.08
07/16/2012	15640	Evans-Hydro Inc.	7,667.57
07/16/2012	15641	Graybar Electric Co., Inc.	40.82
07/16/2012	15642	House Of Quality, Parts Plus	644.16
07/16/2012	15643	Max Machinery, Inc.	683.68

Check Register - July 2012

<u>Check Date</u>	<u>Check Number</u>	<u>Name</u>	<u>Check Amount</u>
07/16/2012	15644	Merit Oil Company	4,746.79
07/16/2012	15645	MWH Laboratories	1,200.00
07/16/2012	15646	Nagem, Inc.	3,348.58
07/16/2012	15647	NCL Of Wisconsin Inc	366.68
07/16/2012	15648	Roquet Paving Inc	12,853.34
07/16/2012	15649	Siemens Industry, Inc.	1,130.85
07/16/2012	15650	Test America Laboratories, Inc	1,272.00
07/16/2012	15651	Atkinson, Andelson, Loya, Ruud	1,525.28
07/18/2012	15652	NICOARA, ILONA	191.33
07/18/2012	15653	PEREZ, JOSE	90.65
07/18/2012	15654	PERALTA, USIEL	25.23
07/18/2012	15655	DAVIS, JANICE	53.83
07/18/2012	15656	SOLUTIONS INC	111.70
07/18/2012	15657	WACHOVIA	58.82
07/18/2012	15658	COLDWELL BANKER PION	50.43
07/18/2012	15659	WILSON, DELEISE	98.96
07/18/2012	15660	LEE, THOMAS K	91.24
07/18/2012	15661	BUSTAMANTE, ROBERT	50.46
07/18/2012	15662	DE KOCK, RUSSELL	23.42
07/18/2012	15663	ARNETT, AZSAH-LEE	78.26
07/18/2012	15664	FAS-LITTON	39.43
07/23/2012	15665	Ameripride Uniform Services	412.81
07/23/2012	15666	AT&T Mobility	1,847.50
07/23/2012	15667	Central Communications	346.95
07/23/2012	15668	CHJ Consultants	4,554.58
07/23/2012	15669	Fedex	65.88
07/23/2012	15670	Fox Occupational Medical Cente	100.00
07/23/2012	15671	Incode Division-Tyler Technolo	350.00
07/23/2012	15672	InfoSend, Inc.	3,182.26
07/23/2012	15673	Kelly Services, Inc.	737.18
07/23/2012	15674	Krieger & Stewart	7,384.33
07/23/2012	15675	LUZ Investment Corp.	80.00
07/23/2012	15676	Main's Lock Supply Inc.	26.94
07/23/2012	15677	NetComp Technologies, Inc.	2,205.00
07/23/2012	15678	Santa Ana Watershed Project Au	6,725.00
07/23/2012	15679	South Coast A.Q.M.D.	426.41
07/23/2012	15680	Separation Processes, Inc.	1,265.00
07/23/2012	15681	Tattletale Portable Alarm Syst	1,974.00
07/23/2012	15682	Terminix Commercial	582.00
07/23/2012	15683	Thomson West	220.90
07/23/2012	15684	Evimero, LLC	7,925.00
07/23/2012	15685	John F. Baker Jr.	2,200.00
07/23/2012	15686	BofA Credit Card	752.38
07/23/2012	15687	Brenntag Pacific, Inc	17,695.30
07/23/2012	15688	Victor James Valenti	3,570.61
07/23/2012	15689	Frost Company	4,355.00
07/23/2012	15690	Grainger	303.39
07/23/2012	15691	Hach Company	2,843.07
07/23/2012	15692	Inland Water Works Supply Co.	2,231.87
07/23/2012	15693	Innerline Engineering	1,450.00
07/23/2012	15694	JR Freeman Co. Inc.	122.36
07/23/2012	15695	Merit Oil Company	1,916.12
07/23/2012	15696	Microflex Corp #774353	1,127.49
07/23/2012	15697	Q Versa, LLC	2,269.91
07/23/2012	15698	Siemens Industry, Inc.	900.58
07/23/2012	15699	Sterling Water Technologies LL	8,923.25
07/23/2012	15700	Troy Alarm, Inc.	174.96

Check Register - July 2012

<u>Check Date</u>	<u>Check Number</u>	<u>Name</u>	<u>Check Amount</u>
07/23/2012	15701	BofA Credit Card	369.97
07/27/2012	15702	PAYROLL CHECK	2,270.32
07/27/2012	15703	CA-PERS Supplemental Income 45	10,301.71
07/27/2012	15704	Public Employees' Retirement S	26,414.00
07/27/2012	15705	Hong Nelson	125.00
07/27/2012	15706	Katherine Kostelecky	500.00
07/27/2012	15707	IBEW Local 1436	325.00
07/27/2012	15708	Franchise Tax Board	150.00
07/27/2012	15709	American Family Life Assurance	2,439.34
07/27/2012	15710	YVWD-Petty Cash	204.47
07/27/2012	15711	Gregory N. Godwin	295.79
07/27/2012	15712	SeaBright Insurance Company	12,636.00
07/30/2012	15713	Soboba Band of Luiseno Indians	7,362.88
07/30/2012	15714	Tysa Baeumel	130.00
07/30/2012	15715	Matthew Hendrickson	65.00
07/30/2012	15716	Ameripride Uniform Services	420.35
07/30/2012	15717	Burgeson's Heating & Air Cond.	1,139.00
07/30/2012	15718	Daily Journal Corporation	668.80
07/30/2012	15719	House Of Quality, Parts Plus	2,053.62
07/30/2012	15720	Kelly Services, Inc.	951.20
07/30/2012	15721	Konica Minolta Business Soluti	456.75
07/30/2012	15722	Leroy's Landscape Services	5,700.00
07/30/2012	15723	PFM Asset Management LLC	2,000.00
07/30/2012	15724	SCE Rosemead	261,823.67
07/30/2012	15725	Verizon	1,760.19
07/30/2012	15726	Wilbur's	116.31
07/30/2012	15727	Air & Hose Source, Inc.	3.36
07/30/2012	15728	All American Sewer Tools	375.83
07/30/2012	15729	Aqua-Metric Sales Company	1,755.74
07/30/2012	15730	Auto Care Clinic	666.99
07/30/2012	15731	Brenntag Pacific, Inc	4,764.69
07/30/2012	15732	CINTAS First Aid & Safety	309.05
07/30/2012	15733	David Sunden	86.30
07/30/2012	15734	Evans-Hydro Inc.	5,696.24
07/30/2012	15735	George & Vaughn's Inc.	361.63
07/30/2012	15736	Grainger	395.57
07/30/2012	15737	Graybar Electric Co., Inc.	4.11
07/30/2012	15738	Innerline Engineering	1,450.00
07/30/2012	15739	James John Brothers	10,200.00
07/30/2012	15740	JR Freeman Co. Inc.	43.62
07/30/2012	15741	Merit Oil Company	3,215.31
07/30/2012	15742	Microflex Corp #774353	1,127.49
07/30/2012	15743	Moss Bros. Chrysler Jeep Dodge	564.24
07/30/2012	15744	Nagem, Inc.	600.00
07/30/2012	15745	Pro-Pipe & Supply, Inc.	177.92
07/30/2012	15746	R & R Anderson Trucking	2,223.07
07/30/2012	15747	Red Alert Special Couriers	2,257.44
07/30/2012	15748	The Lab Depot, Inc.	350.02
07/30/2012	15749	HD Supply Facilities Maintenanc	2,698.29
July 2012 Check Register Total			2,436,378.69

Financial Account Information - July 2012

DATE	DESCRIPTION	Deposit Checking	General Checking	Investment Checking	Treasuries at cost	LAIF Invest. Fund	TOTAL ACTIVITY
06/30/2012	bal forward	692,175.27	30,000.00	62,119.99	500,983.20	4,841,703.47	6,126,981.93
6/30	rev retained in MM				(64.72)		(64.72)
07/02/2012	Deposit	128,578.78					128,578.78
	Credit Card-6/29	307.42					307.42
	Credit Card-7/2	2,933.82					2,933.82
	Electronic	23,907.19					23,907.19
	Website-7/2	5,163.14					5,163.14
	Website-7/3	83.26					83.26
	Website-7/3	209.36					209.36
	Cks. #15530-15548		(258,888.25)				(258,888.25)
	TRF#1120 - AP	(258,888.25)	258,888.25				0.00
07/03/2012	Deposit	57,894.74					57,894.74
	ETS Fees	(844.84)					(844.84)
	ETS Fees	(758.48)					(758.48)
	Credit Card-7/2	355.78					355.78
	Credit Card-7/3	1,405.82					1,405.82
	Electronic	38,579.13					38,579.13
	Website-7/3	1,684.77					1,684.77
	Website-7/4	1,058.41					1,058.41
	Website-7/5	40.00					40.00
	Website-7/5	416.90					416.90
	ACH pmts	33,888.76					33,888.76
07/05/2012	Deposit	73,866.99					73,866.99
	Credit Card-7/3	542.65					542.65
	Credit Card-7/5	4,474.74					4,474.74
	Electronic	21,295.87					21,295.87
	Website-7/5	1,430.61					1,430.61
	Website-7/6	492.29					492.29
07/06/2012	Deposit	49,793.39					49,793.39
	Credit Card-7/5	313.98					313.98
	Credit Card-7/6	3,687.58					3,687.58
	Electronic	22,327.16					22,327.16
	Website-7/6	3,531.54					3,531.54
	Website-7/7	275.77					275.77
	Website-7/7	1,635.90					1,635.90
	Website-7/8	551.19					551.19
	Website-7/9	151.11					151.11
	Website-7/9	250.92					250.92
7/5	Prop 50 Inv#11		601,938.12				601,938.12
	TRF#1121-Prop 50 inv #11	601,938.12	(601,938.12)				0.00
07/09/2012	Deposit	92,582.38					92,582.38
	Credit Card-7/6	668.03					668.03
	Credit Card-7/9	5,767.11					5,767.11
	Electronic	25,068.64					25,068.64
	Website-7/9	1,691.66					1,691.66
	Website-7/10	390.75					390.75
07/10/2012	Deposit	42,507.17					42,507.17
	Credit Card-7/9	494.70					494.70
	Credit Card-7/10	2,228.14					2,228.14
	Electronic	18,493.64					18,493.64
	Website-7/10 & 7/11	6,762.42					6,762.42
	Website-7/11	338.93					338.93
	ACH pmts	59,520.86					59,520.86
07/11/2012	Deposit	73,314.08					73,314.08
	Deposit - M/C	5,964.51					5,964.51
	Credit Card-7/10	1,412.35					1,412.35
	Credit Card-7/11	4,105.39					4,105.39
	Electronic	18,180.33					18,180.33
	Website-7/11	1,538.08					1,538.08
	Website-7/12	596.05					596.05

Financial Account Information - July 2012

DATE	DESCRIPTION	Deposit Checking	General Checking	Investment Checking	Treasuries at cost	LAIF Invest. Fund	TOTAL ACTIVITY
06/30/2012	bal forward	692,175.27	30,000.00	62,119.99	500,983.20	4,841,703.47	6,126,981.93
7/13/12-PR	Federal Taxes		(38,212.84)				(38,212.84)
7/13/12-PR	State Taxes		(6,922.18)				(6,922.18)
7/13/12-PR	PR Direct Deposit		(102,398.36)				(102,398.36)
7/13/12-PR	ING 457		(7,240.21)				(7,240.21)
	Cks. #15549-15597		(93,448.89)				(93,448.89)
	TRF#1122 - AP & PR	(248,222.48)	248,222.48				0.00
07/12/2012	Deposit	58,262.49					58,262.49
	Deposit - M/C	3,633.00					3,633.00
	Credit Card-7/11	1,431.72					1,431.72
	Credit Card-7/12	1,257.59					1,257.59
	Electronic	15,421.46					15,421.46
	Website-7/12	1,755.72					1,755.72
	Website-7/13	1,868.38					1,868.38
07/13/2012	Deposit	38,113.19					38,113.19
	LAIF Quarterly Interest					4,364.83	4,364.83
	Credit Card-7/12	338.71					338.71
	Credit Card-7/13	2,065.76					2,065.76
	Electronic	18,395.65					18,395.65
	Website-7/13	1,865.84					1,865.84
	Website-7/14	1,634.19					1,634.19
	Website-7/15	2,104.51					2,104.51
	Website-7/16	85.00					85.00
	Website-7/16	401.36					401.36
07/16/2012	Deposit	91,756.85					91,756.85
	Deposit - SBC Tax Ck	16,632.97					16,632.97
	Credit Card-7/13	750.87					750.87
	Credit Card-7/16	5,058.42					5,058.42
	Electronic	21,820.20					21,820.20
	Website-7/16	978.61					978.61
	Website-7/17	111.97					111.97
	Website-7/17	103.93					103.93
	ACH pmts	50,196.95					50,196.95
	Qtrly Analysis Fee			(7,581.82)			(7,581.82)
07/17/2012	Deposit	45,051.62					45,051.62
	Credit Card-7/16	275.95					275.95
	Credit Card-7/17	1,390.75					1,390.75
	Electronic	22,524.70					22,524.70
	Website-7/17	2,424.64					2,424.64
	Website-7/18	201.36					201.36
07/18/2012	Deposit	39,547.03					39,547.03
	Credit Card-7/17	677.73					677.73
	Credit Card-7/18	4,132.72					4,132.72
	Electronic	12,976.27					12,976.27
	Website-7/18	1,288.35					1,288.35
	Website-7/19	241.54					241.54
	Cks. #15598-15664		(1,612,787.24)				(1,612,787.24)
	TRF#1123 - AP	(1,612,787.24)	1,612,787.24				0.00
07/19/2012	Deposit	40,150.38					40,150.38
	Deposit - RC Tax Ck	309.80					309.80
	Credit Card	1,286.52					1,286.52
	Electronic	8,813.52					8,813.52
	Website-7/19	951.07					951.07
	Website-7/20	433.83					433.83
	ETS Fees Annual	(108.00)					(108.00)
	ETS Fees Annual	(108.00)					(108.00)

Financial Account Information - July 2012

DATE	DESCRIPTION	Deposit Checking	General Checking	Investment Checking	Treasuries at cost	LAIF Invest. Fund	TOTAL ACTIVITY
06/30/2012	bal forward	692,175.27	30,000.00	62,119.99	500,983.20	4,841,703.47	6,126,981.93
07/20/2012	Deposit	33,624.65					33,624.65
	Credit Card-7/19	494.47					494.47
	Credit Card-7/20	1,588.86					1,588.86
	Electronic	16,921.05					16,921.05
	Website-7/20	8,351.75					8,351.75
	Website-7/21	72.75					72.75
	Website-7/21	1,164.15					1,164.15
	Website-7/22	968.09					968.09
	Website-7/23	507.93					507.93
	ACH pmts	19,779.67					19,779.67
07/23/2012	Deposit	64,502.20					64,502.20
	SRF Draw #3	5,674,682.00					5,674,682.00
	Credit Card-7/20	728.80					728.80
	Credit Card-7/23	2,070.25					2,070.25
	Electronic	17,803.12					17,803.12
	Website-7/23	946.03					946.03
	Website-7/24	359.44					359.44
07/24/2012	Deposit	31,219.61					31,219.61
	Credit Card-7/23	309.61					309.61
	Credit Card-7/24	891.61					891.61
	Electronic	21,060.38					21,060.38
	Website-7/24	1,161.14					1,161.14
	Website-7/25	127.75					127.75
07/25/2012	Deposit	25,444.45					25,444.45
	Deposit - SBC Tax Ck	59,370.26					59,370.26
	Credit Card-7/24	279.49					279.49
	Credit Card-7/25	1,319.70					1,319.70
	Electronic	9,601.86					9,601.86
	Website-7/25	1,125.03					1,125.03
	Website-7/26	113.18					113.18
	Website-7/26	304.94					304.94
	ACH pmts	70,443.46					70,443.46
7/27/12-PR	Federal Taxes		(35,326.35)				(35,326.35)
7/27/12-PR	State Taxes		(6,586.84)				(6,586.84)
7/27/12-PR	PR Direct Deposit		(97,085.01)				(97,085.01)
7/27/12-PR	ING 457		(6,782.62)				(6,782.62)
	Cks. #15665-15712		(147,279.63)				(147,279.63)
	TRF#1124 - AP & PR	(293,060.45)	293,060.45				0.00
07/26/2012	Deposit	33,084.78					33,084.78
	Deposit - M/C	392.00					392.00
	Credit Card-7/25	282.20					282.20
	Credit Card-7/26	1,042.86					1,042.86
	Electronic	7,234.88					7,234.88
	Website-7/26	324.91					324.91
	Website-7/27	832.77					832.77
	TRF#1125	(6,000,000.00)		6,000,000.00			0.00
	TRF#1126			(6,000,000.00)		6,000,000.00	0.00
07/27/2012	Deposit	21,380.02					21,380.02
	Credit Card	1,942.76					1,942.76
	Electronic	9,533.69					9,533.69
	Website-7/27	2,191.92					2,191.92
	Website-7/28	150.00					150.00
	Website-7/28	382.62					382.62
	Website-7/29	584.25					584.25
	Website-7/30	221.76					221.76
7/20	ARRA Draw #24		196,926.00				196,926.00
	TRF#1127-ARRA Draw #24	196,926.00	(196,926.00)				0.00

Financial Account Information - July 2012

DATE	DESCRIPTION	Deposit Checking	General Checking	Investment Checking	Treasuries at cost	LAIF Invest. Fund	TOTAL ACTIVITY
06/30/2012	bal forward	692,175.27	30,000.00	62,119.99	500,983.20	4,841,703.47	6,126,981.93
07/30/2012	Deposit	70,675.97					70,675.97
	Credit Card-7/27	101.56					101.56
	Credit Card-7/30	1,614.90					1,614.90
	Electronic	8,569.07					8,569.07
	Website-7/30	2,310.14					2,310.14
	Website-7/31	1,193.70					1,193.70
	Cks. #15719-15749		(323,974.68)				(323,974.68)
	TRF#1128 - AP	(323,974.68)	323,974.68				0.00
07/31/2012	Deposit	47,658.74					47,658.74
	Deposit - M/C	26,279.60					26,279.60
	Credit Card-7/30	121.75					121.75
	Credit Card-7/31	2,640.45					2,640.45
	Electronic	16,563.70					16,563.70
	Website-7/31	2,297.91					2,297.91
	Website-8/1	604.61					604.61
	July 12 NSF's	(1,332.03)					(1,332.03)
7/31	retained in MM				64.72		64.72
	TOTALS	439,983.45	30,000.00	54,538.17	500,983.20	10,846,068.30	11,871,573.12

Investment Summary - July 2012

U.S. TREASURIES

Quantity	Description	Cusip	Maturity Date	Yield	Cost of Purchase	Market Value
501,000	US Treasury Bill	912795Y96	August 23, 2012	0.028%	500,918.48	500,984.97
501,000	Total Values				500,918.48	500,984.97

Money Market Account Activity-Beginning Balance	64.72
June - Dividend/Interest	0.00
Income	0.00
Intra-Bank Transfers to/from Investment Checking	0.00
Fund Transfers	0.00
Cusip Maturity	0.00
Redemptions	0.00
Cusip Purchase	0.00
Purchases	0.00
 Ending Balance - Money Market	 64.72
 US Treasury Securities Investment Principal	 500,918.48
 Total Assets	 500,983.20

Investment Summary - July 2012

LOCAL AGENCY INVESTMENT FUND

PERIOD	TOTAL WITHDRAWAL AMOUNT	TOTAL DEPOSIT AMOUNT	ACCRUED INTEREST (QUARTERLY)	ENDING BALANCE
July 31, 2012	\$0.00	\$6,000,000.00	\$4,364.83	\$10,846,068.30
August 31, 2012	\$0.00	\$0.00	\$0.00	\$10,846,068.30
September 30, 2012	\$0.00	\$0.00	\$0.00	\$10,846,068.30
October 31, 2012	\$0.00	\$0.00	\$0.00	\$10,846,068.30
November 30, 2012	\$0.00	\$0.00	\$0.00	\$10,846,068.30
December 31, 2012	\$0.00	\$0.00	\$0.00	\$10,846,068.30
January 31, 2013	\$0.00	\$0.00	\$0.00	\$10,846,068.30
February 28, 2013	\$0.00	\$0.00	\$0.00	\$10,846,068.30
March 31, 2013	\$0.00	\$0.00	\$0.00	\$10,846,068.30
April 30, 2013	\$0.00	\$0.00	\$0.00	\$10,846,068.30
May 31, 2013	\$0.00	\$0.00	\$0.00	\$10,846,068.30
June 30, 2013	\$0.00	\$0.00	\$0.00	\$10,846,068.30

L.A.I.F. INCOME SUMMARY

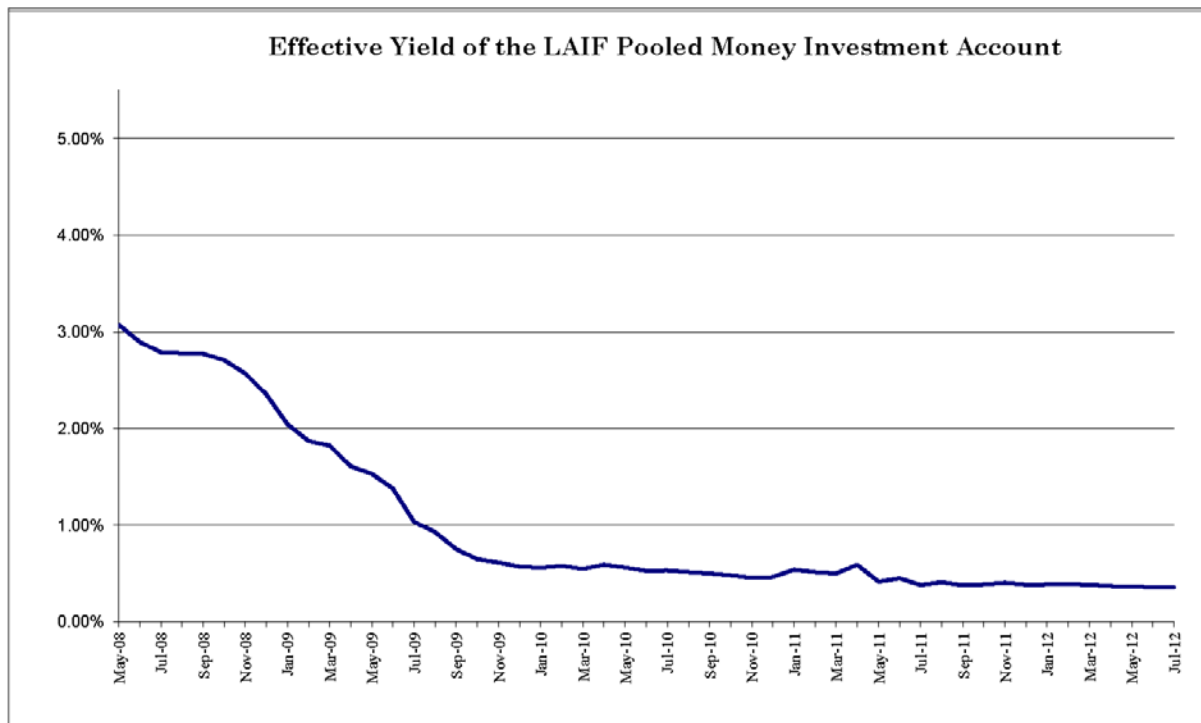
INCOME RECEIVED

CURRENT QUARTER

\$4,364.83

FY YEAR-TO-DATE

\$4,364.83



Daily Deposit Allocation - July 2012

DATE	Description	Qty	DEPOSIT CHECKING DEPOSITS	AR Mail & Counter	AR Payment Centers	AR Credit Card	AR Electronic Rapid Pay	AR Web Site	AR ACH Auto Pay	AR TOTAL	AR Water Customer Deposits	Water Allocation	Sewer Allocation	Recycled Allocation	RECAP TOTAL
07/02/2012	Mail & Counter	665	128,578.78	128,578.78						128,578.78					128,578.78
	Credit Cards	28	3,241.24			3,241.24				3,241.24					3,241.24
	Electronic	233	23,907.19				23,907.19			23,907.19					23,907.19
	Website - 44 fees	48	5,455.76					5,378.76		5,455.76					5,455.76
07/03/2012	Mail & Counter	518	57,894.74	57,894.74						57,894.74					57,894.74
	Credit Cards	17	1,761.60			1,761.60				1,761.60					1,761.60
	Electronic	416	38,579.13	38,579.13				3,149.33		38,579.13					38,579.13
	Website - 29 fees	34	3,200.08							3,200.08					3,200.08
	ACH payment	357	33,888.76						33,888.76	33,888.76					33,888.76
07/05/2012	Mail & Counter	516	73,866.99	73,866.99						73,866.99					73,866.99
	Credit Cards	42	5,017.39			5,017.39				5,017.39					5,017.39
	Electronic	238	21,295.87				21,295.87			21,295.87					21,295.87
	Website	16	1,922.90					1,894.90		1,922.90					1,922.90
07/06/2012	Mail & Counter	382	49,796.39	49,796.39						49,796.39					49,796.39
JE	Dep short		(3.00)							0.00		(3.00)			(3.00)
	Credit Cards	35	4,001.56			4,001.56				4,001.56					4,001.56
	Electronic	252	22,327.16				22,327.16			22,327.16					22,327.16
	Website - 49 fees	51	6,396.43					6,310.68		6,396.43					6,396.43
07/09/2012	Mail & Counter	586	92,522.38	92,522.38						92,522.38					92,522.38
	Credit Cards	30	6,435.14			6,435.14				6,435.14					6,435.14
	Electronic	219	25,068.64				25,068.64			25,068.64					25,068.64
	Website	19	2,082.41					2,049.16		2,082.41					2,082.41
07/10/2012	Mail & Counter	326	42,507.17	42,507.17						42,507.17					42,507.17
	Credit Cards	26	2,722.84			2,722.84				2,722.84					2,722.84
	Electronic	209	18,493.64				18,493.64			18,493.64					18,493.64
	Website - 39 fees	46	7,101.35					7,033.10		7,101.35					7,101.35
	ACH payment	458	59,520.86						59,520.86	59,520.86					59,520.86
07/11/2012	Mail & Counter	427	73,314.08	73,314.08						73,314.08					73,314.08
	Deposit - MIC	427	5,964.51							5,964.51					5,964.51
	Credit Cards	38	5,517.74			5,517.74				5,517.74					5,517.74
	Electronic	187	18,180.33				18,180.33			18,180.33					18,180.33
	Website	22	2,134.13					2,095.63		2,134.13					2,134.13
07/12/2012	Mail & Counter	299	58,262.49	58,262.49						58,262.49					58,262.49
	Deposit - MIC	-	3,633.00							0.00		3,633.00			3,633.00
	Credit Cards	17	2,689.31			2,689.31				2,689.31					2,689.31
	Electronic	151	15,421.46				15,421.46			15,421.46					15,421.46
	Website	18	3,624.10					3,592.60		3,624.10					3,624.10
07/13/2012	Mail & Counter	265	38,113.19	38,113.19						38,113.19					38,113.19
	Credit Cards	21	2,404.47			2,404.47				2,404.47					2,404.47
	Electronic	194	18,395.65				18,395.65			18,395.65					18,395.65
	Website - 50 fees	53	6,090.90					6,003.40		6,090.90					6,090.90
07/16/2012	Mail & Counter	569	91,756.85	91,756.85						91,756.85					91,756.85
	Deposit - SBC Tax	-	16,632.97							0.00		16,632.97			16,632.97
	Credit Cards	25	5,809.29			5,809.29				5,809.29					5,809.29
	Electronic	215	21,820.20				21,820.20			21,820.20					21,820.20
	Website	12	1,194.51					1,173.51		1,194.51					1,194.51
	ACH payment	474	50,196.95						50,196.95	50,196.95					50,196.95
07/17/2012	Mail & Counter	416	45,051.62	45,051.62						45,051.62					45,051.62
	Credit Cards	18	1,666.70			1,666.70				1,666.70					1,666.70
	Electronic	242	22,524.70				22,524.70			22,524.70					22,524.70
	Website	25	2,626.00					2,582.25		2,626.00					2,626.00
07/18/2012	Mail & Counter	350	39,547.03	39,547.03						39,547.03					39,547.03
	Credit Cards	40	4,810.45			4,810.45				4,810.45					4,810.45
	Electronic	142	12,976.27				12,976.27			12,976.27					12,976.27
	Website - 10 fees	11	1,288.35					1,270.85		1,288.35					1,288.35
	Website	1	241.54					239.79		241.54					241.54

Daily Deposit Allocation - July 2012

DATE	Description	Qty	DEPOSIT CHECKING DEPOSITS	AR Mail & Counter	AR Payment Centers	AR Credit Card	AR Electronic Rapid Pay	AR Web Site	AR ACH Auto Pay	AR TOTAL	AR Water Customer Deposits	Water Allocation	Sewer Allocation	Recycled Allocation	RECAP TOTAL
07/19/2012	Mail & Counter	225	40,150.38	40,150.38						40,150.38					40,150.38
	Deposit - RC Tax	-	309.80							0.00		309.80			309.80
	Credit Cards	6	1,286.52			1,286.52				1,286.52					1,286.52
	Electronic	97	8,813.52				8,813.52			8,813.52					8,813.52
	Website	18	1,384.90					1,353.40		1,353.40	31.50				1,384.90
07/20/2012	Mail & Counter	204	33,624.65	33,624.65						33,624.65					33,624.65
	Credit Cards	15	2,083.33			2,083.33				2,083.33					2,083.33
	Electronic	190	16,921.05				16,921.05			16,921.05					16,921.05
	Website	42	11,064.67					10,991.17		10,991.17	73.50				11,064.67
	ACH payment	448	19,779.67						19,779.67	19,779.67					19,779.67
07/23/2012	Mail & Counter	493	64,502.20	64,502.20						64,502.20					64,502.20
	SRF Draw #3	-	5,674,682.00							0.00		5,674,682.00			5,674,682.00
	Credit Cards	27	2,799.05			2,799.05				2,799.05					2,799.05
	Electronic	195	17,803.12				17,803.12			17,803.12					17,803.12
	Website	13	1,305.47					1,282.72		1,282.72	22.75				1,305.47
07/24/2012	Mail & Counter	301	31,219.61	31,219.61						31,219.61					31,219.61
	Credit Cards	9	1,201.22			1,201.22				1,201.22					1,201.22
	Electronic	220	21,060.38				21,060.38			21,060.38					21,060.38
	Website	14	1,288.89					1,264.39		1,264.39	24.50				1,288.89
07/25/2012	Mail & Counter	213	25,444.45	25,444.45						25,444.45					25,444.45
	Deposit - SBC Tax	-	59,370.26							0.00		59,370.26			59,370.26
	Credit Cards	13	1,599.19			1,599.19				1,599.19					1,599.19
	Electronic	95	9,601.86				9,601.86			9,601.86					9,601.86
	Website	14	1,543.15					1,518.65		1,518.65	24.50				1,543.15
	ACH payment	511	70,443.46						70,443.46	70,443.46					70,443.46
07/26/2012	Mail & Counter	178	33,084.78	31,584.78						31,584.78	1,500.00				33,084.78
	Deposit - M/C	-	392.00							0.00		392.00			392.00
	Credit Cards	16	1,325.06			1,325.06				1,325.06					1,325.06
	Electronic	76	7,234.88				7,234.88			7,234.88					7,234.88
	Website	11	1,157.68					1,138.43		1,138.43	19.25				1,157.68
07/27/2012	Mail & Counter	181	21,380.02	21,380.02						21,380.02					21,380.02
	Credit Cards	16	1,942.76			1,942.76				1,942.76					1,942.76
	Electronic	83	9,533.69				9,533.69			9,533.69					9,533.69
	Website	31	3,530.55					3,476.30		3,476.30	54.25				3,530.55
07/30/2012	Mail & Counter	274	70,675.97	70,675.97						70,675.97					70,675.97
	Credit Cards	13	1,716.46			1,716.46				1,716.46					1,716.46
	Electronic	86	8,569.07				8,569.07			8,569.07					8,569.07
	Website	22	3,503.84					3,465.34		3,465.34	38.50				3,503.84
07/31/2012	Mail & Counter	295	47,658.74	47,658.74						47,658.74					47,658.74
	Deposit - M/C	-	26,279.60							0.00		17,208.60			26,279.60
	Credit Cards	19	2,762.20			2,762.20				2,762.20					2,762.20
	Electronic	159	16,563.70				16,563.70			16,563.70					16,563.70
	Website	27	2,902.52					2,855.27		2,855.27	47.25				2,902.52
Prop 50 #11	\$601,938.12 - 7/6									0.00					0.00
ARRA #24	\$196,926.00-7/20									0.00					0.00
Jul-12	Utility Pmt Cntr-437			(39,143.45)						0.00					0.00
	July '12 NSF's		(1,332.03)	(1,332.03)						(1,332.03)					(1,332.03)
TOTALS		14,849	7,687,696.48	1,155,496.16	39,143.45	62,793.52	336,512.38	70,119.63	233,829.70	1,897,894.94	2,540.50	103,508.14	5,683,753.00	0.00	7,687,696.48
TOTAL # AR PAYMENTS				7,248	437	469	3,899	548	2,248	14,849					
PERCENT OF TOTAL RECEIVED				48.81%	2.94%	3.16%	26.28%	3.69%	15.14%	100%					

FY 2013 - Water Revenue

ACCOUNT#	DESCRIPTION	BUDGET	July '12	Aug '12	Sept '12	Year to Date	Percentage YTD
02-40010	Sales - Water	6,156,500	649,818			649,818	10.55%
02-40011	Sales - Construction Water	35,000	1,697			1,697	4.85%
02-40012	Sales - Imported Water (SGPWA)	200,000	21,306			21,306	10.65%
02-40013	Sales - Imported Water (MUNI)	800,000	88,132			88,132	11.02%
02-40014	Sales Disc.-Multi Units Usage Chrg.	(130,000)	(11,416)			(11,416)	8.78%
02-40015	Water Wholesale Revenue	60,000	4,684			4,684	7.81%
02-40016	Service Establishment Fee	500	25			25	5.00%
02-41000	Service Demand Charges	2,350,000	211,255			211,255	8.99%
02-41001	Fire Service Standby Fees	18,000	1,521			1,521	8.45%
02-41003	Construction Service Charge	10,000	800			800	8.00%
02-41005	Sales Disc-Multi Units Service Chrg.	(100,000)	(9,768)			(9,768)	9.77%
02-41010	Unauthorized Use of Water Charge	1,500	0			0	0.00%
02-41110	Meter/Lateral installation	25,000	0			0	0.00%
02-41112	Fire Flow Test Fees	2,500	300			300	12.00%
02-41113	Disconnect/Reconnect Fees	125,000	6,760			6,760	5.41%
02-41121	Delinquent Payment Charges	125,000	14,111			14,111	11.29%
02-42123	Management & Accounting Fees	147,000	12,250			12,250	8.33%
02-41124	Bad Debt	(24,000)	0			0	0.00%
02-43010	Interest Earned	10,000	0			0	0.00%
02-43110	Property Tax - Unsecured	100,000	0			0	0.00%
02-43120	Property Tax - Secured	2,200,000	0			0	0.00%
02-43130	Tax Collection - Prior	15,000	0			0	0.00%
02-43140	Other Taxes	125,000	310			310	0.25%
02-49150	Revenue - Misc. Non-Operating	50,000	2,105			2,105	4.21%
	WATER OPERATING REVENUE	12,302,000	993,890	0	0	993,890	8.08%
02-82002	Grants (FEMA)	0	0			0	
02-89901	Facility Capacity Charges	0	13,478			13,478	
02-89902	Sustainability	0	881			881	
	TOTAL WATER REVENUE	12,302,000	1,008,249	0	0	1,008,249	

FY 2013 - Sewer Revenue

ACCOUNT#	DESCRIPTION	BUDGET	July '12	Aug '12	Sept '12	Year to Date	Percentage YTD
03-40016	Sales - Establish Service Fee	500	0			0	0.00%
03-41000	Sales - Sewer Charges	10,638,500	892,940			892,940	8.39%
03-41005	Sales Disc-Multi Units Service Chrg.	(200,000)	(17,503)			(17,503)	8.75%
03-41110	Meter/Lateral Installation	1,000	0			0	0.00%
03-41121	Penalty Late Charges	140,000	11,542			11,542	8.24%
03-41124	Bad Debt	(20,000)	0			0	0.00%
03-42122	Revenue - Other Operating	1,000	0			0	0.00%
03-43010	Interest Earned	10,000	0			0	0.00%
03-43110	Property Tax - Unsecured	10,000	0			0	0.00%
03-43120	Property Tax - Secured	100,000	0			0	0.00%
03-43130	Tax Collection - Prior	10,000	0			0	0.00%
03-43140	Other Taxes	1,500	0			0	0.00%
03-49150	Misc. Non-Oper Revenue	25,000	0			0	0.00%
	SEWER OPERATING REVENUE	10,717,500	886,979	0	0	886,979	8.28%
03-82003	Grants - ARRA	0	0			0	
03-82004	Grants - Prop 50	0	0			0	
03-89901	Facility Capacity Charges	0	8,221			8,221	
03-89903	Contrib Capital-Front Footage Fees	0				0	
03-89905	Contrib Capital-Infrastructure	0	0			0	
	TOTAL SEWER REVENUE	10,717,500	895,200	0	0	895,200	

FY 2013 - Recycled Revenue

ACCOUNT#	Description	BUDGET	July '12	Aug '12	Sept '12	Year to Date	Percentage YTD
04-40010	Sales - Recycled Water	290,000	44,585			44,585	15.37%
04-40011	Sales - Construction Water	2,500	44			44	1.76%
04-41000	Sales - Service Demand Chrg.	33,000	2,170			2,170	6.58%
04-41003	Const. Water Minimum Chrg.	4,000	214			214	5.35%
04-41110	Meter/Lateral installation	1,500	0			0	
04-41121	Penalty - Late Charge	250	25			25	10.12%
04-41122	Revenue - Other Operating	250	0			0	0.00%
04-43010	Interest Earned	75	0			0	
04-43110	Property Tax - Unsecured	1,000	0			0	0.00%
04-43120	Property Tax - Secured	15,000	0			0	0.00%
04-43130	Property Tax - Prior	1,000	0			0	0.00%
04-43140	Property Tax - Prior	1,000	0			0	0.00%
04-49150	Misc. Non-Operating Revenue	1,000	0			0	0.00%
	RECYCLED OPERATING REVENUE	350,575	47,038	0	0	47,038	13.42%
04-82001	Grants-EPA #XP989384-01	0	0			0	
04-89901	Facility Capacity Charges	0	0			0	
	TOTAL RECYCLED REVENUE	350,575	47,038	0	0	47,038	

FY 2013 - Water Expenses

ACCOUNT#	DESCRIPTION	BUDGET	July '12	Aug '12	Sept '12	Year to Date	Percentage YTD
02-5-01-50010	Labor-Water Resources	789,300	37,908			37,908	4.80%
02-5-01-50011	Labor Credit	0	0			0	
02-5-01-50013	Benefits-Fica	55,000	3,119			3,119	5.67%
02-5-01-50014	Benefits-Life Insurance	3,900	292			292	7.50%
02-5-01-50016	Benefits-Health\Defrd Comp	105,600	8,627			8,627	8.17%
02-5-01-50017	Benefits-Disability Insurance	9,500	672			672	7.08%
02-5-01-50019	Benefits-Workers Compensation	33,975	2,018			2,018	5.94%
02-5-01-50021	Benefits-PERS	55,010	2,310			2,310	4.20%
02-5-01-50022	Benefits-PERS-Employer	110,500	4,487			4,487	4.06%
02-5-01-50023	Benefits-Uniforms	3,300	126			126	3.81%
02-5-01-50024	Benefits-Vacation & Sick Pay	10,000	593			593	5.93%
02-5-01-50025	Benefits-Boot Allowance	2,200	289			289	13.15%
02-5-01-51003	R&M - Structures	200,000	4,527			4,527	2.26%
02-5-01-51011	R&M - CLA Valves	15,000	1,452			1,452	9.68%
02-5-01-51140	General Supplies & Expenses	2,000	0			0	0.00%
02-5-01-51210	Utilities - Power Purchases	1,400,000	58,704			58,704	4.19%
02-5-01-51211	Utilities - Electricity & Fuel	4,400	23			23	0.52%
02-5-01-51316	Imported Water Purchases	1,000,000	0			0	0.00%
02-5-01-54019	Licenses & Permits	25,000	0			0	0.00%
02-5-01-54110	Laboratory Services	60,000	0			0	0.00%
02-5-01-57040	YV/RWFF Operating Expense	600,000	24,168			24,168	4.03%
	WATER RESOURCE TOTALS	4,484,685	149,315	0	0	149,315	3.33%
02-5-03-50010	Labor-Public Works	963,140	48,270			48,270	5.01%
02-5-03-50011	Labor Credit	0	0			0	
02-5-03-50013	Benefits-Fica	73,600	3,958			3,958	5.38%
02-5-03-50014	Benefits-Life Insurance	6,000	375			375	6.25%
02-5-03-50016	Benefits-Health\Defrd Comp	190,000	12,971			12,971	6.83%
02-5-03-50017	Benefits-Disability Insurance	15,000	826			826	5.51%
02-5-03-50019	Benefits-Workers Compensation	40,000	3,420			3,420	8.55%
02-5-03-50021	Benefits-PERS	67,400	2,824			2,824	4.19%
02-5-03-50022	Benefits-PERS Employer	135,000	5,485			5,485	4.06%
02-5-03-50023	Benefits-Uniforms	5,000	336			336	6.72%
02-5-03-50024	Benefits-Vacation & Sick Pay	5,500	400			400	7.28%
02-5-03-50025	Benefits-Boot Allowance	3,300	0			0	0.00%
02-5-03-51001	R & M - Vehicles & Equipment	180,000	8,136			8,136	4.52%
02-5-03-51011	R&M - Valves	10,000	0			0	0.00%
02-5-03-51020	R&M - Pipelines	275,000	20,872			20,872	7.59%
02-5-03-51021	R&M - Service Lines	120,000	1,578			1,578	1.31%
02-5-03-51022	R&M - Fire Hydrants	25,000	168			168	0.67%
02-5-03-51030	R&M - Water Meters	70,000	10,760			10,760	15.37%
02-5-03-51092	Equipment Credits	0	0			0	
02-5-03-51140	General Supplies & Expenses	1,000	0			0	0.00%
	PUBLIC WORKS TOTALS	2,184,940	120,379	0	0	120,379	5.51%

FY 2013 - Water Expenses

ACCOUNT#	DESCRIPTION	BUDGET	July '12	Aug '12	Sept '12	Year to Date	Percentage YTD
02-5-06-50010	Labor-Administration	641,470	38,023			38,023	5.93%
02-5-06-50011	Labor Credit	0	0			0	0.00%
02-5-06-50012	Director Fees	15,000	0			0	0.00%
02-5-06-50013	Benefits-Fica	49,000	2,967			2,967	6.05%
02-5-06-50014	Benefits-Life Insurance	2,800	297			297	10.62%
02-5-06-50016	Benefits-HealthDefrd Comp	150,000	10,916			10,916	7.28%
02-5-06-50017	Benefits-Disability Insurance	9,000	577			577	6.41%
02-5-06-50019	Benefits-Workers Compensation	20,000	573			573	2.87%
02-5-06-50021	Benefits-PERS	44,900	2,589			2,589	5.77%
02-5-06-50022	Benefits PERS Employer	89,800	5,027			5,027	5.60%
02-5-06-50023	Uniforms	2,300	108			108	4.68%
02-5-06-50024	Benefits-Vacation & Sick Pay	13,000	916			916	7.04%
02-5-06-50025	Benefits-Boots	1,580	0			0	0.00%
02-5-06-51003	R&M - Structures	20,000	4,053			4,053	20.28%
02-5-06-51091	Expense Credits (overhead)	0	0			0	0.00%
02-5-06-51120	Safety Equipment/Supplies	20,000	653			653	3.27%
02-5-06-51125	Petroleum Products	120,000	6,480			6,480	5.40%
02-5-06-51130	Office Supplies & Expenses	35,000	773			773	2.21%
02-5-06-51140	General Supplies & Expenses	25,000	20			20	0.08%
02-5-06-51199	Disaster Incidences	0	0			0	0.00%
02-5-06-51211	Utilities - Electricity	28,000	194			194	0.69%
02-5-06-51213	Utilities - Natural Gas	3,000	0			0	0.00%
02-5-06-54002	Dues & Subscriptions	10,000	98			98	0.98%
02-5-06-54005	Computer Expenses	85,000	4,099			4,099	4.82%
02-5-06-54010	Postage	6,000	66			66	1.10%
02-5-06-54011	Printing & Publications	15,000	135			135	0.90%
02-5-06-54012	Education & Training	15,000	180			180	1.20%
02-5-06-54013	Utility Billing Expenses	130,000	5,352			5,352	4.12%
02-5-06-54014	Public Relations	7,500	99			99	1.32%
02-5-06-54016	Travel Related Expenses	5,000	20			20	0.40%
02-5-06-54017	Certifications & Renewals	7,000	545			545	7.79%
02-5-06-54020	Meeting Related Expenses	4,500	424			424	9.42%
02-5-06-54024	Utilities - Waste Disposal	2,500	0			0	0.00%
02-5-06-54025	Utilities - Telephone	32,500	1,704			1,704	5.24%
02-5-06-54104	Contractual Services	68,000	4,911			4,911	7.22%
02-5-06-54107	Legal	45,000	0			0	0.00%
02-5-06-54108	Audit & Accounting	16,000	0			0	0.00%
02-5-06-54109	Professional Fees	120,000	2,500			2,500	2.08%
02-5-06-55500	Depreciation Reserves	190,000	16,200			16,200	8.53%
02-5-06-56001	Infrastructure Replacement	400,000	33,700			33,700	8.43%
02-5-06-56001	Insurance	120,000	8,064			8,064	6.72%
02-5-06-57030	Regulatory Compliance	15,000	0			0	0.00%
02-5-06-57090	Election Related Expense	10,000	0			0	0.00%
02-5-06-57096	Beaumont Basin Watermaster	20,000	0			0	0.00%
02-5-06-57100	County Tax Collector Fees	7,500	0			0	0.00%
02-5-06-57199	Suspense	0	0			0	0.00%
ADMINISTRATION TOTALS		2,621,350	152,263	0	0	152,263	5.81%

FY 2013 - Water Expense

ACCOUNT#	DESCRIPTION	BUDGET	July '12	Aug '12	Sept '12	Year to Date	Percentage YTD
02-5-40-57001	Asset Acq. - Water Resources	40,000	0	0	0	0	0.00%
02-5-40-57003	Asset Acq. - Public works	40,000	0	0	0	0	0.00%
02-5-40-57006	Asset Acq. - Administration	0	0	0	0	0	
02-5-40-57201	Debt Srv-Series 2004A Princ.(25009)	955,000	0	0	0	0	0.00%
02-5-40-57402	Interest-Long-Term Debt Bonds	1,976,025	0	0	0	0	0.00%
	40 - Debt & Capital Outlay	3,011,025	0	0	0	0	0.00%
	TOTAL WATER EXPENSES	12,302,000	421,956	0	0	421,956	3.43%

FY 2013 - Sewer Expenses

ACCOUNT#	DESCRIPTION	BUDGET	July '12	Aug '12	Sept '12	Year to Date	Percentage YTD
03-5-02-50010	Labor-VWV Treatment	833,200	48,973			48,973	5.88%
03-5-02-50013	Benefits-Fica	63,700	4,021			4,021	6.31%
03-5-02-50014	Benefits-Life Insurance	4,000	378			378	9.46%
03-5-02-50016	Benefits-Health\Defrd Comp	150,000	11,060			11,060	7.37%
03-5-02-50017	Benefits-Disability Insurance	13,000	871			871	6.70%
03-5-02-50019	Benefits-Workers Compensation	35,000	3,233			3,233	9.24%
03-5-02-50021	Benefits-PERS	58,300	3,329			3,329	5.71%
03-5-02-50022	Benefits-PERS Employer	116,900	6,466			6,466	5.53%
03-5-02-50023	Benefits-Uniforms	3,300	312			312	9.46%
03-5-02-50024	Benefits-Vacation & Sick Pay	25,000	358			358	1.43%
03-5-02-50025	Benefits-Boot Allowance	2,200	0			0	0.00%
03-5-02-51003	R&M - Structures	250,000	10,637			10,637	4.25%
03-5-02-51010	R&M - Automation Control	75,000	0			0	0.00%
03-5-02-51106	Chemicals	500,000	22,064			22,064	4.41%
03-5-02-51111	Propane	5,000	0			0	0.00%
03-5-02-51115	Laboratory Supplies	30,000	2,758			2,758	9.19%
03-5-02-51140	General Supplies & Expenses	1,000	0			0	0.00%
03-5-02-51210	Utilities - Power Purchases	700,000	40,247			40,247	5.75%
03-5-02-54110	Laboratory Services	120,000	3,114			3,114	2.60%
03-5-02-57031	Sludge Disposal	300,000	0			0	0.00%
03-5-02-57033	Brine Disposal	40,000	0			0	0.00%
	TREATMENT TOTALS	3,325,600	157,822	0	0	157,822	4.75%

FY 2013 Sewer Expenses

ACCOUNT#	DESCRIPTION	BUDGET	July '12	Aug '12	Sept '12	Year to Date	Percentage YTD
03-5-06-50010	Labor-Administration	631,600	34,224			34,224	5.42%
03-5-06-50012	Directors Fees	15,000	0			0	0.00%
03-5-06-50013	Benefits-Fica	48,300	2,657			2,657	5.50%
03-5-06-50014	Benefits-Life Insurance	3,500	297			297	8.50%
03-5-06-50016	Benefits-Health\Defr'd Comp	145,000	9,995			9,995	6.89%
03-5-06-50017	Benefits-Disability Insurance	9,000	537			537	5.96%
03-5-06-50019	Benefits-Workers Compensation	11,400	2,254			2,254	19.77%
03-5-06-50021	Benefits-PERS	44,500	2,381			2,381	5.35%
03-5-06-50022	Benefits-PERS Employer	88,400	4,623			4,623	5.23%
03-5-06-50023	Benefits-Uniforms	2,300	68			68	2.96%
03-5-06-50024	Benefits-Vacation & Sick Pay	10,000	916			916	9.16%
03-5-06-50025	Benefits-Boot Allowance	1,620	0			0	0.00%
03-5-06-51120	Safety Equipment/Supplies	8,500	2,255			2,255	26.53%
03-5-06-51125	Petroleum Products	15,000	1,000			1,000	6.67%
03-5-06-51130	Office Supplies	3,000	37			37	1.23%
03-5-06-51140	General Supplies & Expenses	15,000	0			0	0.00%
03-5-06-51199	Disaster Incidences	0	0			0	
03-5-06-54002	Dues & Subscriptions	10,000	358			358	3.58%
03-5-06-54003	Management & Admin Services	147,000	12,250			12,250	8.33%
03-5-06-54005	Computer Expenses	75,000	3,725			3,725	4.97%
03-5-06-54011	Printing & Publications	10,000	100			100	1.00%
03-5-06-54012	Education & Training	15,000	0			0	0.00%
03-5-06-54014	Public Relations	8,000	99			99	1.24%
03-5-06-54016	Travel Related Expenses	7,000	0			0	0.00%
03-5-06-54017	Certifications & Renewals	5,500	440			440	8.00%
03-5-06-54019	Licenses & Permits	45,000	0			0	0.00%
03-5-06-54020	Meeting Related Expenses	3,500	414			414	11.84%
03-5-06-54021	Disaster Preparedness Training	0	0			0	
03-5-06-54024	Utilities - Waste Disposal	12,500	0			0	0.00%
03-5-06-54025	Utilities - Telephone	20,000	1,040			1,040	5.20%
03-5-06-54030	Drinking Water	1,000	70			70	7.00%
03-5-06-54104	Contractual Services	30,000	639			639	2.13%
03-5-06-54107	Legal	45,000	0			0	0.00%
03-5-06-54108	Audit & Accounting	16,000	0			0	0.00%
03-5-06-54109	Professional Fees	400,000	2,500			2,500	0.63%
03-5-06-55500	Depreciation Reserves	457,000	37,900			37,900	8.29%
03-5-06-56001	Infrastructure Replacement	800,000	66,300			66,300	8.29%
03-5-06-56001	Insurance	115,000	8,064			8,064	7.01%
03-5-06-57030	Regulatory Compliance	44,500	6,725			6,725	15.11%
03-5-06-57100	County Tax Collection Fees	1,200	0			0	0.00%
	ADMINISTRATION TOTALS	3,320,320	201,868	0	0	201,868	6.08%

FY 2013 - Sewer Expenses

ACCOUNT#	DESCRIPTION	BUDGET	July '12	Aug '12	Sept '12	Year to Date	Percentage YTD
03-5-07-50010	Labor-Environmental Control	420,000	12,452			12,452	2.96%
03-5-07-50011	Labor Credit	0	0			0	
03-5-07-50013	Benefits-Fica	32,000	955			955	2.98%
03-5-07-50014	Benefits-Life Insurance	2,500	88			88	3.52%
03-5-07-50016	Benefits-Health\Defrd Comp	66,000	4,447			4,447	6.74%
03-5-07-50017	Benefits-Disability Insurance	4,500	198			198	4.40%
03-5-07-50019	Benefits-Workers Compensation	22,500	1,139			1,139	5.06%
03-5-07-50021	Benefits-PERS	30,000	706			706	2.35%
03-5-07-50022	Benefits-PERS Employer	58,600	1,371			1,371	2.34%
03-5-07-50023	Benefits-Uniforms	2,000	76			76	3.79%
03-5-07-50024	Benefits-Vacation & Sick Pay	2,000	0			0	
03-5-07-50025	Benefits-Boot Allowance	1,380	296			296	21.43%
03-5-07-51003	R&M - Structures	320,000	2,975			2,975	0.93%
03-5-07-51140	General Supplies & Expenses	1,000	0			0	0.00%
03-5-07-51241	Lift Station #1	70,000	1,375			1,375	1.96%
03-5-07-51242	Lift Station #2	10,000	248			248	2.48%
03-5-07-51243	Lift Station #3	5,000	0			0	0.00%
03-5-07-51244	Lift Station #4	20,000	194			194	0.97%
03-5-07-51245	Lift Station #5	5,000	0			0	0.00%
03-5-07-51248	Lift Station #8	3,000	0			0	0.00%
03-5-07-54109	Professional Fees	50,000	0			0	0.00%
03-5-07-54110	Laboratory Services	2,500	0			0	0.00%
	ENVIRONMENTAL CONTROL TOTAL	1,127,980	26,520	0	0	26,520	2.35%
03-5-40-57002	Asset Acq. - Treatment						
03-5-40-57006	Asset Acq. - Administration		0	0	0	0	
03-5-40-57007	Asset Acq. - Environmental Control		0	0	0	0	
03-5-40-57009	Obligation to MUNI	20,000	0	0	0	0	0.00%
03-5-40-57202	Debt Service - Principal	1,953,500	0	0	0	0	0.00%
03-5-40-57403	Debt Service - Interest	970,100	0	0	0	0	0.00%
	Debt & Capital Outlay	2,943,600	0	0	0	0	0.00%
	TOTAL SEWER EXPENSES	10,717,500	386,210	0	0	386,210	3.60%

FY 2013 - Recycled Expenses

ACCOUNT#	Description	BUDGET	July '12	Aug '12	Sept '12	Year to Date	Percentage YTD
04-5-06-50010	Labor-Recycled Water	148,162	0			0	0.00%
04-5-06-50012	Director Fees	2,500	0			0	0.00%
04-5-06-50013	Benefits-FICA	11,300	0			0	0.00%
04-5-06-50014	Benefits-Life Insurance	600	0			0	0.00%
04-5-06-50016	Benefits-Health & Def Comp	17,563	402			402	2.29%
04-5-06-50017	Benefits-Disability Insurance	1,500	0			0	0.00%
04-5-06-50019	Benefits-Workers Compensation	5,000	0			0	0.00%
04-5-06-50021	Benefits-PERS Employee	10,000	0			0	0.00%
04-5-06-50022	Benefits-PERS Employer	20,000	0			0	0.00%
04-5-06-50023	Benefits-Uniforms	570	0			0	0.00%
04-5-06-50024	Benefits-Vacation & Sick Pay	3,000	0			0	0.00%
04-5-06-50025	Benefits-Boots	380	0			0	0.00%
04-5-06-51003	R & M-Structures	7,500	0			0	0.00%
04-5-06-51020	R & M-Pipelines	2,500	0			0	
04-5-06-51021	R & M-Service Lines	2,500	0			0	
04-5-06-51022	R & M-Fire Hydrants	2,500	0			0	0.00%
04-5-06-51030	R & M-Meters	500	0			0	0.00%
04-5-06-51140	General Supplies & Expenses	250	0			0	0.00%
04-5-06-51316	Imported Water Purchases	1,000	0			0	0.00%
04-5-06-54002	Dues & Subscriptions	3,000	0			0	0.00%
04-5-06-54005	Computer Expense	1,500	0			0	0.00%
04-5-06-54011	Printing & Publications	2,500	0			0	0.00%
04-5-06-54012	Education & Training	2,500	0			0	0.00%
04-5-06-54014	Public Relations	1,500	99			99	6.61%
04-5-06-54016	Travel Related Expenses	1,000	0			0	0.00%
04-5-06-54019	Licenses & Permits	2,500	0			0	
04-5-06-54020	Meeting Related Expenses	500	0			0	
04-5-06-54025	Telephone	500	0			0	0.00%
04-5-06-54010	Contractual Services	1,750	0			0	0.00%
04-5-06-54107	Legal	2,000	0			0	
04-5-06-54109	Professional Fees	10,000	0			0	0.00%
04-5-06-54110	Laboratory Services	1,000	0			0	
04-5-06-55500	Depreciation	8,000	630			630	7.88%
	Infrastructure Replacement	50,000	3,800			3,800	7.60%
04-5-06-57030	Regulatory Compliance	15,000	0			0	
04-5-06-57040	Environmental Compliance	10,000	0			0	
	TOTAL RECYCLED EXPENSES	350,575	4,932	0	0	4,932	1.41%



Date: August 15, 2012

Prepared By: Jack Nelson, Assistant General Manager

Subject: Claim for Damages at 11976 California Street, Yucaipa due to Water Mainline Break

Recommendation: That the Board denies the claim for damages at property located at 11976 California Street, Yucaipa.

On July 14, 2012 the Yucaipa Water District incurred a rupture of an 8-inch PVC water main on Cedar Street. The location of the mainline break resulted in a significant quantity of water flowing down an alley to California Street and onto the property at 11976 California Street in Yucaipa including the workshop and residence of Dave Ridge.

On August 1st, 2012, the District received the required claim from Mr. Dave Ridge for the water damages and restoration of the property. The claimant obtained emergency cleanup services from Padgett's Cleaning and Restoration, Inc. to minimize the effects of the water damage to the residence, and a follow-up restoration and repair estimate from Padgett's Cleaning and Restoration, Inc.

It is the practice of the District to deny significant cost claims and refer the claims to the District insurance carrier for handling. Due to the cost of the repairs and the restoration, staff recommends that this claim be denied by the Board of Directors and referred to the District's insurance carrier.



Yucaipa Valley Water District

12770 Second Street • P.O. Box 458 • Yucaipa, CA 92399 • (714) 797-9117

RECEIVED

AUG 01 2012

YUCAIPA VALLEY WATER DISTRICT

CLAIM FOR DAMAGES TO PERSON OR PROPERTY

INSTRUCTIONS

1. Claims for death, injury to person or to personal property must be filed not later than six months after the occurrence. (Gov. Code Sec. 911.2)
2. Claims for damages relating to any other cause of action must be filed not later than 1 year after the occurrence. (Gov. Code Sec. 911.2)
3. Read entire claim before filing.
4. See Page 2 for diagram upon which to locate place of accident.
5. This claim form must be signed on page 2 at bottom.
6. Attach separate sheets, if necessary, to give full details. SIGN EACH SHEET.
7. Claim must be filed with Board Secretary.

Name of Claimant

DAVID R. RIDGE

Home Address of Claimant

City and State

11976 CALIFORNIA ST.

YUCAIPA CALIFORNIA

Home Telephone Number

Business Telephone Number

909-801-0253

Business Address of Claimant

City and State

Give address to which you desire notices or communications to be sent regarding this claim:

11976 CALIFORNIA ST YUCAIPA CA 92399

When did DAMAGE or INJURY occur?

Date: JULY 14, 2012

Time: APT 4:00 PM

How did DAMAGE or INJURY occur? Give full particulars.

WATER MAIN RUPTURED ON ADAMS STREET NORTH OF BEECH CAUSING FLOODING TO RUN DOWN ALLEY ACROSS CALIFORNIA ST AND INTO MY HOME

Where did DAMAGE or INJURY occur? Describe fully, and locate on diagram on reverse side of this sheet. Where appropriate, give street names and addresses and measurements from landmarks:

THE WATER + DEBRIS RAN INTO THE NORTH WEST CORNER OF MY PROPERTY AND INTO A BEDROOM, A STORAGE SHED AND INTO MY WOODWORKING SHOP

What particular ACT or OMISSION do you claim caused the injury or damage? Give names of District employees causing the injury or damage, if known:

A. WATER MAIN RIPPED

What DAMAGE or INJURIES do you claim resulted? Give full extent of injuries or damages claimed:

SEE ATTACHED SHEETS

What AMOUNT do you claim on account of each item of injury or damage as of the date of presentation of this claim, giving basis of computation:

SEE ATTACHED SHEETS

Give ESTIMATED AMOUNT as far as known, that you claim on account of each item of prospective injury or damage, giving basis of computation:

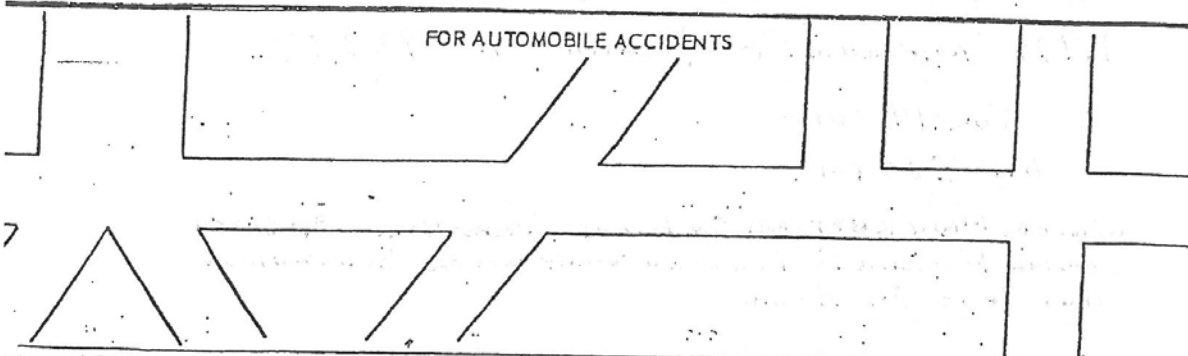
SEE ATTACHED SHEETS

Name and address of Witnesses, Doctors and Hospitals

READ CAREFULLY

For all accident claims place on following diagram names of streets, including North, East, South, and West: indicate place of accident by "X" and by showing house numbers of distances to street corners. If District Vehicle was involved, designate by letter "A" location of District vehicle when you first saw it, and by "B" location of yourself or your vehicle when you first saw District vehicle; location of District vehicle at time of accident by "A-1" and location of yourself or your vehicle at the time of the accident by "B-1" and the point of impact by "X".

NOTE: If diagrams below do not fit the situation, attach hereto a proper diagram signed by claimant.



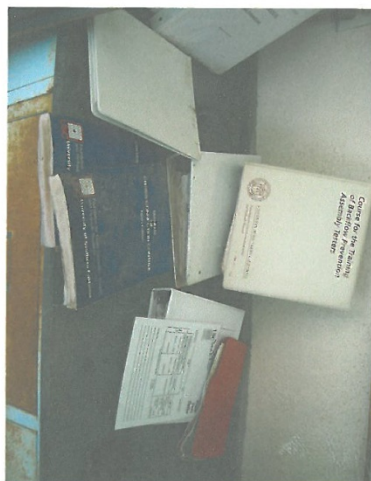
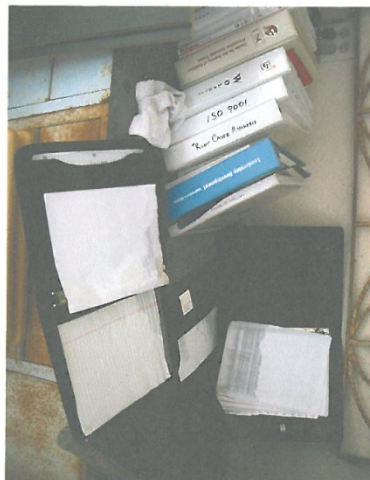
Signature of Claimant or person filing on his behalf, if giving relationship to Claimant: Typed Name Date

NOTE: Presentation of a false claim is a felony. (Cal. Pen. Code Sec. 72) CLAIMS MUST BE FILED WITH BOARD SECRETARY

List of personal property lost
as a result of flooding
on July 14, 2012

1	Hard sided brief case	\$ 50.00
10	Binders	50.00
12	Professional manuals and code books	1000.00
8	Professional Certificates and frames	80.00
2	All-Bisque Dolls (green ware)	75.00
1	Dewalt 4" grinder	100.00
1	Incra Miter Express Panel (MERPANEL)	35.00
1	Sewing table	25.00
2	Reams of printing paper	<u>10.00</u>
	Total	\$1425.00











Full Service For Restoration & Contents in San Bernardino, L.A & Orange County

Padgett's Cleaning & Restoration
535 New Jersey St
Redlands, CA 92373
Phone: (800) 273-1194 Fax: (909) 307-2775
EIN 33-0546368

Client: Dave Ridge
Property: 11976 California
Yucaipa, CA 92399

Operator Info:
Operator: JOSEPHD

Estimator: Tim Padgett Business: (909) 307-2769
E-mail: Tim@trustpadgetts.com

Company: Padgett's Cleaning & Restoration

Type of Estimate:
Date Entered: 7/23/2012 Date Assigned:

Price List: CABD7X_JUL12
Labor Efficiency: Restoration/Service/Remodel
Estimate: R1207031_EMS

*****1ST PHASE - SERVICES*****

1st Phase Services: 7/14/2012
Inspection Date: 7/15/2012
Cause of Loss: Sewer back-up.

THIS ESTIMATE IS A SCOPE OF WORK COMPLETED FOR THE ABOVE PROPERTY. PADGETT'S CLEANING AND RESTORATION DOES NOT DETERMINE COVERAGE FOR THIS ESTIMATE.

PADGETTS CLEANING AND RESTORATION GIVES NO OPINION AS TO THE PRESENCE OR ABSENCE OF MOLD IN YOUR RESIDENCE. PROFESSIONALS THAT TEST FOR MOLD ARE AVAILABLE AND CAN BE HIRED BY INDIVIDUALS TO PERFORM THIS SERVICE.

Enclosed you will find a copy of the scope of work completed during the first phase of services at your home. This scope of work is subject to your insurance company's approval. Please review and advise us of any additional damage that you may have encountered that is not addressed in this scope of work.

If you have any questions regarding the progress of your job, your estimator/project manager will be glad to answer them. If you have any questions regarding the scope, please direct them to our office.

Thank you for the opportunity to be of service to you.



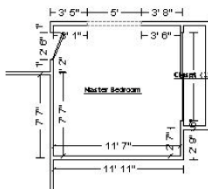
Full Service For Restoration & Contents in San Bernardino, L.A & Orange County

Padgett's Cleaning & Restoration
 535 New Jersey St
 Redlands, CA 92373
 Phone: (800) 273-1194 Fax: (909) 307-2775
 EIN 33-0546368

**R1207031_EMS
 Main Level**

General

DESCRIPTION	QNTY	REMOVE	REPLACE	TOTAL
1. Emergency service call - after business hours	1.00 EA	0.00	250.24	250.24
Coordination and mobilization of mitigation services - after hours on 7/14/2012.				
2. Equipment setup, take down, and monitoring (hourly charge)	1.00 HR	0.00	59.58	59.58
Mitigation call and equipment set up - 7/14/2012				
3. Equipment setup, take down, and monitoring (hourly charge)	2.00 HR	0.00	59.58	119.16
Equipment monitoring (per trip) - 7/15, 7/16				
4. Equipment setup, take down, and monitoring (hourly charge)	1.00 HR	0.00	59.58	59.58
Equipment monitoring and pickup - 7/19				
5. Haul debris - per pickup truck load - including dump fees	1.00 EA	115.58	0.00	115.58
6. Asbestos test fee - full service asbestos survey	1.00 EA	0.00	357.30	357.30
Test for asbestos due to age of the home - 1952				
7. Lead test fee - full service lead survey	1.00 EA	0.00	420.00	420.00
Test for lead due to age of the home - 1952				
Totals: General				1,381.44



Master Bedroom

Height: 8'

272.67 SF Walls	138.03 SF Ceiling
410.70 SF Walls & Ceiling	138.03 SF Floor
15.34 SY Flooring	31.50 LF Floor Perimeter
47.00 LF Ceil. Perimeter	

Door	2' 6" X 6' 8"	Opens into Exterior
Missing Wall - Goes to Floor	5' X 6' 8"	Opens into Exterior



Full Service For Restoration & Contents in San Bernardino, L.A & Orange County

Padgett's Cleaning & Restoration
 535 New Jersey St
 Redlands, CA 92373
 Phone: (800) 273-1194 Fax: (909) 307-2775
 EIN 33-0546368

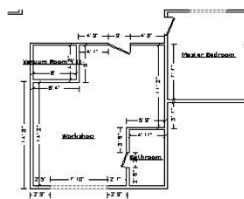
CONTINUED - Master Bedroom



Subroom 1: CLOSET **Height: 8'**

125.33 SF Walls	18.33 SF Ceiling
143.67 SF Walls & Ceiling	18.33 SF Floor
2.04 SY Flooring	14.33 LF Floor Perimeter
22.33 LF Ceil. Perimeter	

Door	8' X 6' 8"	Opens into MASTER_BEDRO		
DESCRIPTION	QNTY	REMOVE	REPLACE	TOTAL
8. Dehumidifier (per 24 hour period) - No monitoring <i>1 dehu for 5 days - 7/14 to 7/19.</i>	5.00 EA	0.00	66.10	330.50
9. Tear out wet non-salv. cpt, cut/bag-Cat 3 wtr-aft bus. hrs	78.00 SF	1.23	0.00	95.94
10. Tear out wet carpet pad, cut/bag - Cat 3 wtr - aft.bus.hrs	78.00 SF	1.16	0.00	90.48
11. Apply anti-microbial agent - after hours	156.37 SF	0.00	0.40	62.55
12. Interior door slab only - Detach	1.00 EA	0.00	7.08	7.08
Totals: Master Bedroom				586.55



Workshop **Height: 8'**

510.20 SF Walls	272.55 SF Ceiling
782.75 SF Walls & Ceiling	272.55 SF Floor
30.28 SY Flooring	61.64 LF Floor Perimeter
74.47 LF Ceil. Perimeter	

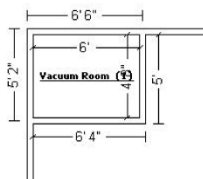
Missing Wall - Goes to Floor	7' 10" X 6' 8"	Opens into Exterior
Door	2' X 6' 8"	Opens into BATHROOM
Door	3' X 6' 8"	Opens into Exterior



Full Service For Restoration & Contents in San Bernardino, L.A & Orange County

Padgett's Cleaning & Restoration
 535 New Jersey St
 Redlands, CA 92373
 Phone: (800) 273-1194 Fax: (909) 307-2775
 EIN 33-0546368

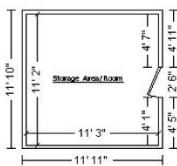
CONTINUED - Workshop



Subroom 1: VACUUM_ROOM Height: 8'

170.67 SF Walls	28.00 SF Ceiling
198.67 SF Walls & Ceiling	28.00 SF Floor
3.11 SY Flooring	21.33 LF Floor Perimeter
21.33 LF Ceil. Perimeter	

DESCRIPTION	QNTY	REMOVE	REPLACE	TOTAL
13. Dehumidifier (per 24 hour period) - No monitoring <i>1 dehu for 5 days - 7/14 to 7/19.</i>	5.00 EA	0.00	66.10	330.50
14. Tear out wet drywall, cleanup, bag, per LF - 4' aft hrs	17.00 LF	7.29	0.00	123.93
15. Tear out wet drywall, cleanup, bag, per LF - 2' aft hrs	52.50 LF	5.17	0.00	271.43
16. Tear out and bag wet insulation - Category 3 - after hours	165.94 SF	1.70	0.00	282.10
17. Tear out trim and bag for disposal - after bus. hours	82.97 LF	1.29	0.00	107.03
18. Apply anti-microbial agent - after hours	300.55 SF	0.00	0.40	120.22
Totals: Workshop				1,235.21



Storage Area/Room Height: 8'

342.00 SF Walls	125.63 SF Ceiling
467.63 SF Walls & Ceiling	125.63 SF Floor
13.96 SY Flooring	42.33 LF Floor Perimeter
44.83 LF Ceil. Perimeter	

DESCRIPTION	QNTY	REMOVE	REPLACE	TOTAL
19. Dehumidifier (per 24 hour period) - No monitoring <i>1 dehu for 5 days - 7/14 to 7/19.</i>	5.00 EA	0.00	66.10	330.50
20. Block and pad furniture in room - after hours	1.00 EA	0.00	79.94	79.94

R1207031_EMS

7/24/2012

Page: 4



Full Service For Restoration & Contents in San Bernardino, L.A & Orange County

Padgett's Cleaning & Restoration
 535 New Jersey St
 Redlands, CA 92373
 Phone: (800) 273-1194 Fax: (909) 307-2775
 EIN 33-0546368

CONTINUED - Storage Area/Room

DESCRIPTION	QNTY	REMOVE	REPLACE	TOTAL
Totals: Storage Area/Room				410.44
Total: Main Level				3,613.64
Line Item Totals: R1207031_EMS				3,613.64

Grand Total Areas:

1,609.29 SF Walls	620.32 SF Ceiling	2,229.61 SF Walls and Ceiling
620.32 SF Floor	68.92 SY Flooring	194.36 LF Floor Perimeter
0.00 SF Long Wall	0.00 SF Short Wall	235.19 LF Ceil. Perimeter
620.32 Floor Area	686.99 Total Area	1,609.29 Interior Wall Area
1,320.48 Exterior Wall Area	162.15 Exterior Perimeter of Walls	
0.00 Surface Area	0.00 Number of Squares	0.00 Total Perimeter Length
0.00 Total Ridge Length	0.00 Total Hip Length	



Full Service For Restoration & Contents in San Bernardino, L.A & Orange County

Padgett's Cleaning & Restoration
535 New Jersey St
Redlands, CA 92373
Phone: (800) 273-1194 Fax: (909) 307-2775
EIN 33-0546368

Summary

Line Item Total	3,613.64
Replacement Cost Value	\$3,613.64
Net Claim	\$3,613.64

Tim Padgett



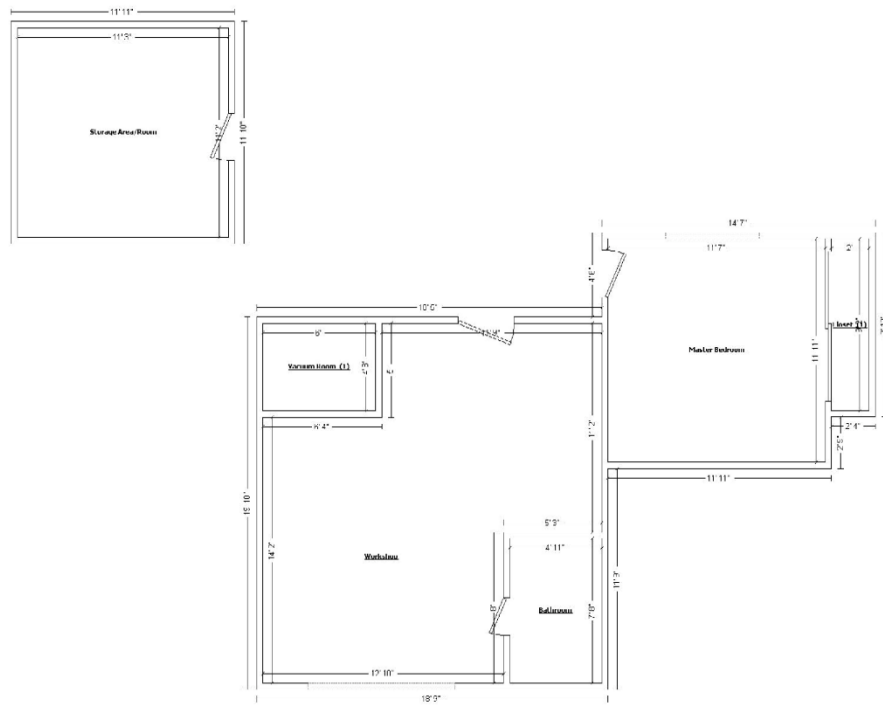
Full Service For Restoration & Contents in San Bernardino, L.A & Orange County

Padgett's Cleaning & Restoration
 535 New Jersey St
 Redlands, CA 92373
 Phone: (800) 273-1194 Fax: (909) 307-2775
 EIN 33-0546368

Recap by Category

Items	Total	%
GENERAL DEMOLITION	1,086.49	30.07%
PERMITS AND FEES	777.30	21.51%
WATER EXTRACTION & REMEDIATION	1,749.85	48.42%
Subtotal	3,613.64	100.00%

Main Level



Main Level

R1207031_EMS

7/24/2012

Page: 8



Full Service For Restoration & Contents in San Bernardino, L.A & Orange County

Padgett's Cleaning & Restoration
535 New Jersey St
Redlands, CA 92373
Phone: (800) 273-1194 Fax: (909) 307-2775
EIN 33-0546368

Client: Dave Ridge
Property: 11976 California
Yucaipa, CA 92399

Operator Info:
Operator: JOSEPHD

Estimator: Tim Padgett Business: (909) 307-2769
E-mail: Tim@trustpadgetts.com

Company: Padgett's Cleaning & Restoration

Type of Estimate:
Date Entered: 7/23/2012 Date Assigned:

Price List: CABD7X_JUL12
Labor Efficiency: Restoration/Service/Remodel
Estimate: R1207031_RES

*****RESTORATION*****

*1rst Phase Services: 7/14/2012
Inspection Date: 7/15/2012
Cause of Loss: Sewer back-up.*

THIS ESTIMATE IS A SCOPE OF REPAIRS PREPARED FOR THE ABOVE PROPERTY. PADGETT'S CLEANING AND RESTORATION DOES NOT DETERMINE COVERAGE FOR THIS ESTIMATE.

PADGETTS CLEANING AND RESTORATION GIVES NO OPINION AS TO THE PRESENCE OR ABSENCE OF MOLD IN YOUR RESIDENCE. PROFESSIONALS THAT TEST FOR MOLD ARE AVAILABLE AND CAN BE HIRED BY INDIVIDUALS TO PERFORM THIS SERVICE.

Enclosed you will find a copy of the scope of repairs that were prepared during our site visit. This scope of repairs is subject to your insurance company's approval. Please review and advise us of any additional damage that you may have encountered that is not addressed in this scope of work.

If you have any questions regarding the progress of your job, your estimator/project manager will be glad to answer them. If you have any questions regarding the scope of repairs, please direct them to our office.

Thank you for the opportunity to be of service to you.



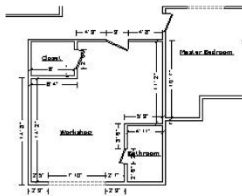
Full Service For Restoration & Contents in San Bernardino, L.A & Orange County

Padgett's Cleaning & Restoration
 535 New Jersey St
 Redlands, CA 92373
 Phone: (800) 273-1194 Fax: (909) 307-2775
 EIN 33-0546368

**R1207031_RES
 Main Level**

General

DESCRIPTION	QNTY	REMOVE	REPLACE	TOTAL
1. Single axle dump truck - per load - including dump fees	1.00 EA	225.58	0.00	225.58
Totals: General				225.58



Workshop

Height: 8'

493.54 SF Walls	272.55 SF Ceiling
766.08 SF Walls & Ceiling	272.55 SF Floor
30.28 SY Flooring	59.14 LF Floor Perimeter
74.47 LF Ceil. Perimeter	

Door	2' 6" X 6' 8"	Opens into CLOSET
Missing Wall - Goes to Floor	7' 10" X 6' 8"	Opens into Exterior
Door	2' X 6' 8"	Opens into BATHROOM
Door	3' X 6' 8"	Opens into Exterior

DESCRIPTION	QNTY	REMOVE	REPLACE	TOTAL
2. Content Manipulation charge - per hour	32.00 HR	0.00	41.76	1,336.32
<i>labor to remove and reset the contents on the walls to gain access for restoration services.</i>				
3. Provide box, packing paper & tape - medium size	22.00 EA	0.00	3.30	72.60
4. Drywall replacement per LF - up to 2' tall	59.14 LF	0.00	7.88	466.02
5. Texture drywall - smooth / skim coat	354.82 SF	0.00	1.11	393.85
6. Batt insulation - 4" - R13	236.55 SF	0.00	0.51	120.64
7. Mask and prep for paint - plastic, paper, tape (per LF)	74.47 LF	0.00	0.99	73.73
8. Paint the walls - one coat	493.54 SF	0.00	0.41	202.35
9. Seal more than the floor perimeter w/latex based stain blocker - one coat	354.82 SF	0.00	0.38	134.83
10. Baseboard - 2 1/4"	59.14 LF	0.00	2.60	153.76
11. Paint baseboard - one coat	59.14 LF	0.00	0.70	41.40

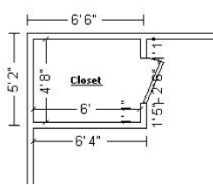


Full Service For Restoration & Contents in San Bernardino, L.A & Orange County

Padgett's Cleaning & Restoration
 535 New Jersey St
 Redlands, CA 92373
 Phone: (800) 273-1194 Fax: (909) 307-2775
 EIN 33-0546368

CONTINUED - Workshop

DESCRIPTION	QNTY	REMOVE	REPLACE	TOTAL
12. Casing - 2 1/4"	48.00 LF	0.00	1.85	88.80
13. Paint door or window opening - 2 coats (per side)	5.00 EA	0.00	22.95	114.75
14. Detach & Reset Door lockset & deadbolt - exterior	2.00 EA	0.00	0.00	71.02
15. Detach & Reset Door knob - interior	2.00 EA	0.00	0.00	50.74
16. Paint door slab only - 2 coats (per side)	2.00 EA	0.00	22.50	45.00
17. Paint French door slab only - 2 coats (per side)	6.00 EA	0.00	48.07	288.42
18. Window blind - horizontal or vertical - Detach & reset	6.00 EA	0.00	38.00	228.00
19. R&R Vinyl tile	272.55 SF	0.85	2.86	1,011.16
20. Floor preparation for sheet goods	272.55 SF	0.00	0.50	136.28
21. Detach & Reset Outlet	6.00 EA	0.00	0.00	94.74
22. R&R Cabinetry - lower (base) units - High grade	5.00 LF	5.62	197.72	1,016.70
<i>damaged due to exposure to water (waste).</i>				
23. Stain & finish cabinetry - lower - inside and out	5.00 LF	0.00	40.87	204.35
24. Electrician - per hour	2.00 HR	0.00	82.02	164.04
<i>labor to remove the electrical from the wall to paint.</i>				
Totals: Workshop				6,509.50



Closet

Height: 8'

154.00 SF Walls	28.00 SF Ceiling
182.00 SF Walls & Ceiling	28.00 SF Floor
3.11 SY Flooring	18.83 LF Floor Perimeter
21.33 LF Ceil. Perimeter	

Door 2' 6" X 6' 8" **Opens into** **WORKSHOP**

DESCRIPTION	QNTY	REMOVE	REPLACE	TOTAL
25. Content Manipulation charge - per hour	8.00 HR	0.00	41.76	334.08
<i>labor to pack out this closet to gain access for restoration services.</i>				

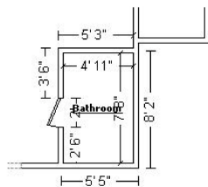


Full Service For Restoration & Contents in San Bernardino, L.A & Orange County

Padgett's Cleaning & Restoration
 535 New Jersey St
 Redlands, CA 92373
 Phone: (800) 273-1194 Fax: (909) 307-2775
 EIN 33-0546368

CONTINUED - Closet

DESCRIPTION	QNTY	REMOVE	REPLACE	TOTAL
26. Provide box, packing paper & tape - medium size	10.00 EA	0.00	3.30	33.00
27. Batt insulation - 4" - R13	37.67 SF	0.00	0.51	19.21
28. Drywall replacement per LF - up to 2' tall	18.83 LF	0.00	7.88	148.38
29. Texture drywall - heavy hand texture	113.00 SF	0.00	0.81	91.53
30. Seal more than the floor perimeter w/latex based stain blocker - one coat	113.00 SF	0.00	0.38	42.94
31. Paint the walls - one coat	154.00 SF	0.00	0.41	63.14
32. Baseboard - 2 1/4"	18.83 LF	0.00	2.60	48.96
33. Paint door or window opening - 2 coats (per side)	1.00 EA	0.00	22.95	22.95
34. Paint baseboard - two coats	18.83 LF	0.00	1.06	19.96
35. Paint door slab only - 2 coats (per side)	1.00 EA	0.00	22.50	22.50
36. Door lockset - Detach & reset	1.00 EA	0.00	25.37	25.37
37. Mask and prep for paint - plastic, paper, tape (per LF)	21.33 LF	0.00	0.99	21.12
38. Glue down carpet	32.20 SF	0.00	2.77	89.19
15 % waste added for Glue down carpet.				
39. Painter - per hour	2.00 HR	0.00	45.25	90.50
<i>labor to paint around the wall shelves.</i>				
Totals: Closet				1,072.83



Bathroom	Height: 8'
188.42 SF Walls	37.78 SF Ceiling
226.20 SF Walls & Ceiling	37.78 SF Floor
4.20 SY Flooring	23.22 LF Floor Perimeter
25.22 LF Ceil. Perimeter	

Door	2' X 6' 8"	Opens into	WORKSHOP	
DESCRIPTION	QNTY	REMOVE	REPLACE	TOTAL
40. Cleaning Technician - per hour	4.00 HR	0.00	33.30	133.20
<i>labor to clean the bathroom.</i>				

R1207031_RES

7/31/2012

Page: 4

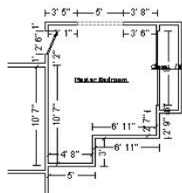


Full Service For Restoration & Contents in San Bernardino, L.A & Orange County

Padgett's Cleaning & Restoration
 535 New Jersey St
 Redlands, CA 92373
 Phone: (800) 273-1194 Fax: (909) 307-2775
 EIN 33-0546368

CONTINUED - Bathroom

DESCRIPTION	QNTY	REMOVE	REPLACE	TOTAL
Totals: Bathroom				133.20



Master Bedroom **Height: 8'**

320.79 SF Walls			152.12 SF Ceiling	
472.91 SF Walls & Ceiling			152.12 SF Floor	
16.90 SY Flooring			37.52 LF Floor Perimeter	
53.02 LF Ceil. Perimeter				

Door	2' 6" X 6' 8"	Opens into	Exterior
Missing Wall - Goes to Floor	5' X 6' 8"	Opens into	Exterior



Subroom 1: CLOSET **Height: 8'**

125.33 SF Walls			18.33 SF Ceiling	
143.67 SF Walls & Ceiling			18.33 SF Floor	
2.04 SY Flooring			14.33 LF Floor Perimeter	
22.33 LF Ceil. Perimeter				

Door	8' X 6' 8"	Opens into	MASTER_BEDRO
-------------	-------------------	-------------------	---------------------

DESCRIPTION	QNTY	REMOVE	REPLACE	TOTAL
41. Content Manipulation charge - per hour	16.00 HR	0.00	41.76	668.16
<i>labor to pack out this bedroom to gain access for restoration services.</i>				
42. Provide box, packing paper & tape - medium size	30.00 EA	0.00	3.30	99.00
43. Clean more than the floor perimeter	207.40 SF	0.00	0.30	62.22
44. Clean baseboard	51.85 LF	0.00	0.30	15.56
45. Paint part of the walls - two coats	382.13 SF	0.00	0.63	240.74
46. Paint door or window opening - 2 coats (per side)	2.00 EA	0.00	22.95	45.90
47. Paint door slab only - 2 coats (per side)	2.00 EA	0.00	22.50	45.00
48. Paint door or window opening - 2 coats (per side)	1.00 EA	0.00	22.95	22.95
<i>window opening.</i>				


Full Service For Restoration & Contents in San Bernardino, L.A & Orange County

Padgett's Cleaning & Restoration
 535 New Jersey St
 Redlands, CA 92373
 Phone: (800) 273-1194 Fax: (909) 307-2775
 EIN 33-0546368

CONTINUED - Master Bedroom

DESCRIPTION	QNTY	REMOVE	REPLACE	TOTAL
49. Detach & Reset Door knob - interior	2.00 EA	0.00	0.00	50.74
50. Window blind - horizontal or vertical - Detach & reset	1.00 EA	0.00	38.00	38.00
51. Remove Carpet - High grade	85.23 SF	0.21	0.00	17.90
52. Remove Carpet pad	85.23 SF	0.09	0.00	7.67
53. Carpet - High grade	196.02 SF	0.00	4.39	860.53
15 % waste added for Carpet - High grade.				
54. Carpet pad	170.45 SF	0.00	0.49	83.52
55. Step charge for "waterfall" carpet installation	2.00 EA	0.00	4.56	9.12
56. R&R Bypass (sliding) door set - Colonist <i>track damaged.</i>	1.00 EA	11.22	156.48	167.70
57. R&R Baseboard - 2 1/4"	51.85 LF	0.31	2.60	150.88
58. R&R Exterior door - metal - insulated - flush or panel style	1.00 EA	16.03	270.08	286.11
59. R&R Door threshold	1.00 EA	6.24	45.64	51.88
Totals: Master Bedroom				2,923.58

EXT/GEN

DESCRIPTION	QNTY	REMOVE	REPLACE	TOTAL
60. Prime & paint door slab only - exterior (per side)	1.00 EA	0.00	34.72	34.72
61. Paint door or window opening - 2 coats (per side)	2.00 EA	0.00	22.95	45.90
62. General Laborer - per hour <i>labor to remove supports and fill dirt.</i>	12.00 HR	0.00	41.76	501.12
63. Carpenter - General Frammer - per hour <i>replace the 4x4 framing lumber with new material.</i>	16.00 HR	0.00	67.65	1,082.40
64. Treated lumber <i>replace the 4x4 framing lumber with new material.</i>	1.00 EA	0.00	650.00	650.00
Totals: EXT/GEN				2,314.14



Full Service For Restoration & Contents in San Bernardino, L.A & Orange County

Padgett's Cleaning & Restoration
 535 New Jersey St
 Redlands, CA 92373
 Phone: (800) 273-1194 Fax: (909) 307-2775
 EIN 33-0546368

Total: Main Level 13,178.83

Line Item Totals: R1207031_RES 13,178.83

Grand Total Areas:

1,624.08 SF Walls	634.40 SF Ceiling	2,258.48 SF Walls and Ceiling
634.40 SF Floor	70.49 SY Flooring	195.37 LF Floor Perimeter
0.00 SF Long Wall	0.00 SF Short Wall	241.20 LF Ceil. Perimeter
634.40 Floor Area	702.07 Total Area	1,624.08 Interior Wall Area
1,320.48 Exterior Wall Area	162.15 Exterior Perimeter of Walls	
0.00 Surface Area	0.00 Number of Squares	0.00 Total Perimeter Length
0.00 Total Ridge Length	0.00 Total Hip Length	



Full Service For Restoration & Contents in San Bernardino, L.A & Orange County

Padgett's Cleaning & Restoration
 535 New Jersey St
 Redlands, CA 92373
 Phone: (800) 273-1194 Fax: (909) 307-2775
 EIN 33-0546368

Summary

Line Item Total				13,178.83
Overhead	@	10.0% x	13,178.83	1,317.88
Profit	@	10.0% x	13,178.83	1,317.88
Material Sales Tax	@	7.750% x	3,668.11	284.28
Replacement Cost Value				\$16,098.87
Net Claim				\$16,098.87

 Tim Padgett

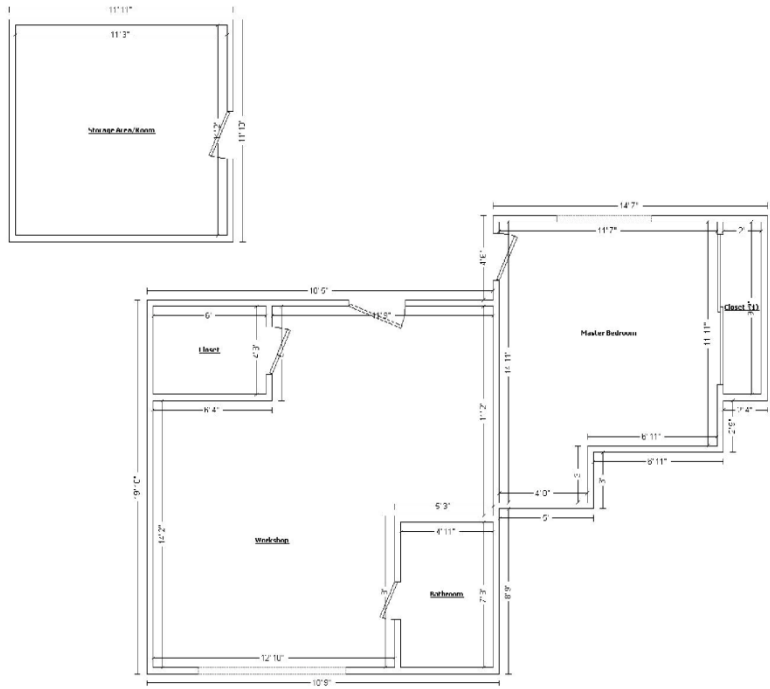

Full Service For Restoration & Contents in San Bernardino, L.A & Orange County

Padgett's Cleaning & Restoration
 535 New Jersey St
 Redlands, CA 92373
 Phone: (800) 273-1194 Fax: (909) 307-2775
 EIN 33-0546368

Recap by Category

O&P Items		Total	%	
CABINETRY		988.60	6.14%	
CLEANING		210.98	1.31%	
CONTENT MANIPULATION		2,338.56	14.53%	
CONT: PACKING,HANDLNG,STORAGE		204.60	1.27%	
GENERAL DEMOLITION		560.48	3.48%	
DOORS		426.56	2.65%	
DRYWALL		1,099.78	6.83%	
ELECTRICAL		258.78	1.61%	
FLOOR COVERING - CARPET		1,042.36	6.47%	
FLOOR COVERING - VINYL		915.77	5.69%	
FINISH CARPENTRY / TRIMWORK		426.33	2.65%	
FINISH HARDWARE		243.51	1.51%	
FRAMING & ROUGH CARPENTRY		1,732.40	10.76%	
INSULATION		139.85	0.87%	
LABOR ONLY		501.12	3.11%	
PAINTING		1,823.15	11.32%	
WINDOW TREATMENT		266.00	1.65%	
O&P Items Subtotal		13,178.83	81.86%	
Overhead	@	10.0%	1,317.88	8.19%
Profit	@	10.0%	1,317.88	8.19%
Material Sales Tax	@	7.750%	284.28	1.77%
Total		16,098.87	100.00%	

Main Level



Main Level

R1207031_RES

7/31/2012

Page: 10



Director Memorandum 12-070

Date: August 15, 2012

Prepared By: Jack Nelson, Assistant General Manager

Subject: Claim for Damages at 11666 Pendleton Avenue, Yucaipa due to Water Mainline Break

Recommendation: That the Board denies the claim for damages at property located at 11666 Pendleton Avenue, Yucaipa.

On July 7, 2012 the Yucaipa Water District incurred a rupture of a 10-inch water mainline on Pendleton Road. The location of the main break resulted in a significant quantity of water flowing across the property at 11666 Pendleton Drive in Yucaipa and into the residence, which is below the road at this location. Due to the extent of water damage incurred by the property owner and the timing of the leak, District staff worked with the claimant and Padgett's Cleaning and Restoration, Inc. to minimize the effects of the water damage to the residence.

On July 19th, 2012, the District received the required claim from Ms. Linda DeBaun for the water damages or restoration of the property. Due to the cost of the emergency repairs and the restoration, the claim was referred to the District's Insurance Company. The restoration work has been completed to the satisfaction of the claimant and the Insurance Company has already sent a check to the claimant for the cost of the repairs. It is the practice of the District to deny significant cost claims and refer the claims to the District insurance carrier for handling.

Since the Board did not meet during the second half of July, the required paperwork has lagged behind the restoration work. Therefore, staff recommends that this claim be denied by the Board of Directors and referred to the District's insurance carrier.



Yucaipa Valley Water District

12770 Second Street • P.O. Box 458 • Yucaipa, CA 92399 • (714) 797-5117

For Jack Nelson

CLAIM FOR DAMAGES TO PERSON OR PROPERTY

INSTRUCTIONS

1. Claims for death, injury to person or to personal property must be filed not later than six months after the occurrence. (Gov. Code Sec. 911.2)
2. Claims for damages relating to any other cause of action must be filed not later than 1 year after the occurrence. (Gov. Code Sec. 911.2)
3. Read entire claim before filing.
4. See Page 2 for diagram upon which to locate place of accident.
5. This claim form must be signed on page 2 at bottom.
6. Attach separate sheets, if necessary, to give full details. SIGN EACH SHEET.
7. Claim must be filed with Board Secretary.

Name of Claimant
LINDA DEBAUN

Home Address of Claimant YUCAIPA, CA 92399
City and State

Home Telephone Number 116.66 PENDLETON RD
909-797-0104

Business Telephone Number 909-797-2987

Business Address of Claimant yucaipa, Ca 92399
City and State

116.66 Pendleton RD, Yucaipa, Ca

Give address to which you desire notices or communications to be sent regarding this claim:

Sunday July 8
When did DAMAGE or INJURY occur?

Date: July 8
Time: noon

How did DAMAGE or INJURY occur? Give full particulars.

The water main pipe broke in Pendleton area.

Where did DAMAGE or INJURY occur? Describe fully, and locate on diagram on reverse side of this sheet. Where appropriate, give street names and addresses and measurements from landmarks:

Water came onto my property and flooded two bedrooms and left debris on my front yard

What particular ACT or OMISSION do you claim caused the injury or damage? Give names of District employees causing the injury or damage, if known:

See Paperwork

What DAMAGE or INJURIES do you claim resulted? Give full extent of injuries or damages claimed:

See Paperwork

What AMOUNT do you claim on account of each item of injury or damage as of the date of presentation of this claim, giving basis of computation:

See Paperwork

Give ESTIMATED AMOUNT as far as known, that you claim on account of each item of prospective injury or damage, giving basis of computation:

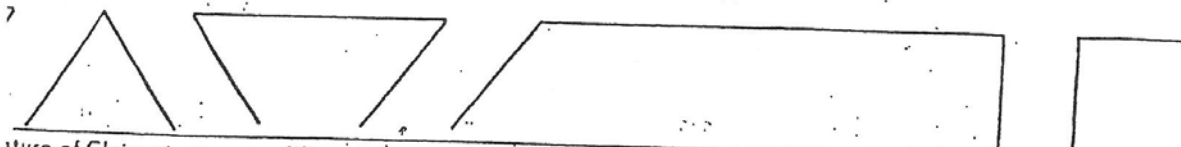
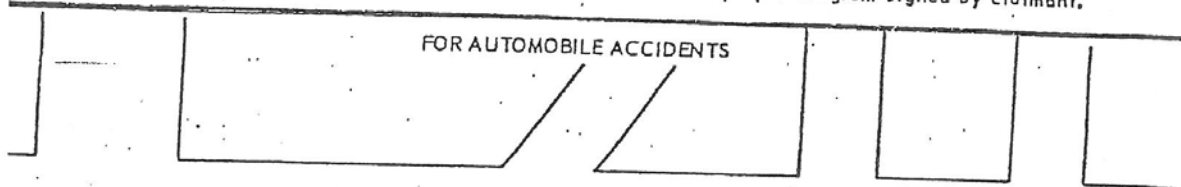
See Paperwork

Name and address of Witnesses, Doctors and Hospitals

BRYAN FEATHERSTONE, NEIGHBOR TO MY LEFT!

READ CAREFULLY

For all accident claims place on following diagram names of streets, including North, East, South, and West: indicate place of accident by "X" and by showing house numbers of distances to street corners. If District Vehicle was involved, designate by letter "A" location of District vehicle when you first saw it, and by "B" location of yourself or your vehicle when you first saw District vehicle: location of District vehicle at time of accident by "A-1" and location of yourself or your vehicle at the time of the accident by "B-1" and the point of impact by "X".
NOTE: If diagrams below do not fit the situation, attach hereto a proper diagram signed by claimant.



Signature of Claimant or person filing on his behalf giving relationship to Claimant: _____
Typed Name _____ Date _____

NOTE: Presentation of a false claim is a felony (Cal. Pen. Code Sec. 72)
CLAIMS MUST BE FILED WITH BOARD SECRETARY



Full Service For Restoration & Contents in San Bernardino, L.A & Orange County

Padgett's Cleaning & Restoration
535 New Jersey St
Redlands, CA 92373
Phone: (800) 273-1194 Fax: (909) 307-2775
EIN 33-0546368

Client: Linda DeBaun
Property: 11666 Pendleton Ave
Yucaipa, CA 92399

Operator Info:
Operator: ERIC

Estimator: Logan

Type of Estimate:
Date Entered: 7/11/2012 Date Assigned:

Price List: CABD7X_JUL12
Labor Efficiency: Restoration/Service/Remodel
Estimate: R1207012_EMS

*****1ST PHASE - SERVICES*****

THIS ESTIMATE IS A SCOPE OF WORK COMPLETED FOR THE ABOVE PROPERTY. PADGETT'S CLEANING AND RESTORATION DOES NOT DETERMINE COVERAGE FOR THIS ESTIMATE.

PADGETT'S CLEANING AND RESTORATION GIVES NO OPINION AS TO THE PRESENCE OR ABSENCE OF MOLD IN YOUR RESIDENCE. PROFESSIONALS THAT TEST FOR MOLD ARE AVAILABLE AND CAN BE HIRED BY INDIVIDUALS TO PERFORM THIS SERVICE.

Enclosed you will find a copy of the scope of work completed during the first phase of services at your home. This scope of work is subject to your insurance company's approval. Please review and advise us of any additional damage that you may have encountered that is not addressed in this scope of work.

If you have any questions regarding the progress of your job, your estimator/project manager will be glad to answer them. If you have any questions regarding the scope, please direct them to our office.

Thank you for the opportunity to be of service to you.



Full Service For Restoration & Contents in San Bernardino, L.A & Orange County

Padgett's Cleaning & Restoration
 535 New Jersey St
 Redlands, CA 92373
 Phone: (800) 273-1194 Fax: (909) 307-2775
 EIN 33-0546368

**R1207012_EMS
 Main Level**

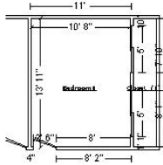
General

DESCRIPTION	QNTY	REMOVE	REPLACE	TOTAL
1. Emergency service call - during business hours	1.00 EA	0.00	166.83	166.83
Coordination and mobilization of mitigation services - 7/9				
2. Equipment setup, take down, and monitoring (hourly charge)	1.00 HR	0.00	59.58	59.58
Mitigation call and equipment set up - 7/9				
3. Equipment setup, take down, and monitoring (hourly charge)	1.00 HR	0.00	59.58	59.58
Equipment monitoring (per trip) - 7/10				
4. Equipment setup, take down, and monitoring (hourly charge)	1.00 HR	0.00	59.58	59.58
Equipment monitoring and pickup - 7/11				
22. Equipment decontamination charge - per piece of equipment	2.00 EA	0.00	40.69	81.38
Decontamination required due to ground water loss.				
23. Water Extraction & Remediation Technician - per hour	2.00 HR	0.00	59.58	119.16
Labor required to clean due to ground water loss.				
5. Haul debris - per pickup truck load - including dump fees	1.00 EA	115.58	0.00	115.58
6. Asbestos test fee - full service asbestos survey	1.00 EA	0.00	357.30	357.30
Test for asbestos due to age of the home - 1977				
7. Lead test fee - full service lead survey	1.00 EA	0.00	420.00	420.00
Test for lead due to age of the home - 1977				
Totals: General				1,438.99



Full Service For Restoration & Contents in San Bernardino, L.A & Orange County

Padgett's Cleaning & Restoration
 535 New Jersey St
 Redlands, CA 92373
 Phone: (800) 273-1194 Fax: (909) 307-2775
 EIN 33-0546368



Bedroom1 **Height: 8'**

310.00 SF Walls	148.44 SF Ceiling
458.44 SF Walls & Ceiling	148.44 SF Floor
16.49 SY Flooring	36.67 LF Floor Perimeter
49.17 LF Ceil. Perimeter	

Door **2' 6" X 6' 8"** **Opens into Exterior**



Subroom 1: CLOSET **Height: 8'**

196.00 SF Walls	34.79 SF Ceiling
230.79 SF Walls & Ceiling	34.79 SF Floor
3.87 SY Flooring	22.83 LF Floor Perimeter
32.83 LF Ceil. Perimeter	

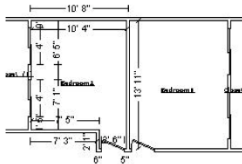
Door **5' X 6' 8"** **Opens into BEDROOM1**
Door **5' X 6' 8"** **Opens into BEDROOM1**

DESCRIPTION	QNTY	REMOVE	REPLACE	TOTAL
9. Dehumidifier (per 24 hour period) - No monitoring	2.00 EA	0.00	66.10	132.20
1 dehu for 2 days 7/9 -7/11				
11. Tear out wet non-salvageable carpet, cut & bag for disp.	39.50 SF	0.49	0.00	19.36
12. Tear out wet carpet pad and bag for disposal	39.50 SF	0.47	0.00	18.57
13. Tear out wet drywall, cleanup, bag, per LF - up to 2' tall	13.17 LF	3.01	0.00	39.64
14. Tear out and bag wet insulation	26.33 SF	0.66	0.00	17.38
15. Tear out trim and bag for disposal	14.00 LF	0.79	0.00	11.06
Totals: Bedroom 1				238.21



Full Service For Restoration & Contents in San Bernardino, L.A & Orange County

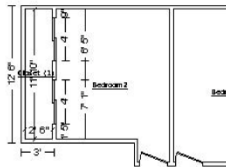
Padgett's Cleaning & Restoration
 535 New Jersey St
 Redlands, CA 92373
 Phone: (800) 273-1194 Fax: (909) 307-2775
 EIN 33-0546368



Bedroom2 **Height: 8'**

318.00 SF Walls	128.35 SF Ceiling
446.35 SF Walls & Ceiling	128.35 SF Floor
14.26 SY Flooring	38.00 LF Floor Perimeter
48.50 LF Ceil. Perimeter	

Door **2' 6" X 6' 8"** **Opens into Exterior**



Subroom 1: CLOSET **Height: 8'**

176.00 SF Walls	29.58 SF Ceiling
205.58 SF Walls & Ceiling	29.58 SF Floor
3.29 SY Flooring	20.67 LF Floor Perimeter
28.67 LF Ceil. Perimeter	

Door **4' X 6' 8"** **Opens into BEDROOM2**
Door **4' X 6' 8"** **Opens into BEDROOM2**

DESCRIPTION	QNTY	REMOVE	REPLACE	TOTAL
16. Dehumidifier (per 24 hour period) - No monitoring	2.00 EA	0.00	66.10	132.20
1 dehu for 2 days 7/9 -7/11				
17. Tear out wet non-salvageable carpet, cut & bag for disp.	38.50 SF	0.49	0.00	18.87
18. Tear out wet carpet pad and bag for disposal	38.50 SF	0.47	0.00	18.10
19. Tear out wet drywall, cleanup, bag, per LF - up to 2' tall	12.83 LF	3.01	0.00	38.62
20. Tear out and bag wet insulation	25.67 SF	0.66	0.00	16.94
21. Tear out trim and bag for disposal	13.00 LF	0.79	0.00	10.27
Totals: Bedroom2				235.00
Total: Main Level				1,912.20
Line Item Totals: R1207012_EMS				1,912.20



Full Service For Restoration & Contents in San Bernardino, L.A & Orange County

Padgett's Cleaning & Restoration
 535 New Jersey St
 Redlands, CA 92373
 Phone: (800) 273-1194 Fax: (909) 307-2775
 EIN 33-0546368

Grand Total Areas:

1,000.00 SF Walls	341.17 SF Ceiling	1,341.17 SF Walls and Ceiling
341.17 SF Floor	37.91 SY Flooring	118.17 LF Floor Perimeter
0.00 SF Long Wall	0.00 SF Short Wall	159.17 LF Ceil. Perimeter
341.17 Floor Area	382.11 Total Area	1,000.00 Interior Wall Area
727.17 Exterior Wall Area	84.50 Exterior Perimeter of Walls	
0.00 Surface Area	0.00 Number of Squares	0.00 Total Perimeter Length
0.00 Total Ridge Length	0.00 Total Hip Length	



Full Service For Restoration & Contents in San Bernardino, L.A & Orange County

Padgett's Cleaning & Restoration
535 New Jersey St
Redlands, CA 92373
Phone: (800) 273-1194 Fax: (909) 307-2775
EIN 33-0546368

Summary

Line Item Total	1,912.20
Replacement Cost Value	\$1,912.20
Net Claim	\$1,912.20

Logan

07/18/2012 13:55 FAX 9093072774

001/008



Full Service For Restoration & Contents in San Bernardino, L.A & Orange County

Padgett's Cleaning & Restoration
535 New Jersey St
Redlands, CA 92373
Phone: (800) 273-1194 Fax: (909) 307-2775
EIN 33-0546368

Client: Linda DeBaun
Property: 11666 Pendleton Ave
Yucaipa, CA 92399

Operator Info:
Operator: ERIC

Estimator: Logan

Type of Estimate:
Date Entered: 7/11/2012 Date Assigned:

Price List: CABD7X_JUL12
Labor Efficiency: Restoration/Service/Remodel
Estimate: R1207012_RES

*****RESTORATION*****

THIS ESTIMATE IS A SCOPE OF REPAIRS PREPARED FOR THE ABOVE PROPERTY. PADGETT'S CLEANING AND RESTORATION DOES NOT DETERMINE COVERAGE FOR THIS ESTIMATE.

PADGETT'S CLEANING AND RESTORATION GIVES NO OPINION AS TO THE PRESENCE OR ABSENCE OF MOLD IN YOUR RESIDENCE. PROFESSIONALS THAT TEST FOR MOLD ARE AVAILABLE AND CAN BE HIRED BY INDIVIDUALS TO PERFORM THIS SERVICE.

Enclosed you will find a copy of the scope of repairs that were prepared during our site visit. This scope of repairs is subject to your insurance company's approval. Please review and advise us of any additional damage that you may have encountered that is not addressed in this scope of work.

If you have any questions regarding the progress of your job, your estimator/project manager will be glad to answer them. If you have any questions regarding the scope of repairs, please direct them to our office.

Thank you for the opportunity to be of service to you.

FAXED
JUL 18 2012
to Carol

07/18/2012 13:55 FAX 9093072774

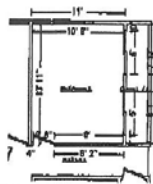
002/009



Full Service For Restoration & Contents in San Bernardino, L.A. & Orange County

Padgett's Cleaning & Restoration
 535 New Jersey St
 Redlands, CA 92373
 Phone: (800) 273-1194 Fax: (909) 307-2775
 EIN 33-0546368

**R1207012_RES
 Main Level**



Door

Bedroom1		Height: 8'
310.00 SF Walls	148.44 SF Ceiling	
458.44 SF Walls & Ceiling	148.44 SF Floor	
16.49 SY Flooring	36.67 LF Floor Perimeter	
49.17 LF Ceil. Perimeter		
Door	2' 6" X 6' 8"	Opens into HALLWAY



Door

Door

Subroom 1: CLOSET		Height: 8'
196.00 SF Walls	34.79 SF Ceiling	
230.79 SF Walls & Ceiling	34.79 SF Floor	
3.87 SY Flooring	22.83 LF Floor Perimeter	
32.83 LF Ceil. Perimeter		
Door	5' X 6' 8"	Opens into BEDROOM1
Door	5' X 6' 8"	Opens into BEDROOM1

DESCRIPTION	QNTY	REMOVE	REPLACE	TOTAL
43. Content Manipulation charge - per hour	4.00 HR	0.00	41.76	167.04
46. Provide box, packing paper & tape - medium size	10.00 EA	0.00	3.30	33.00
47. Provide box, packing paper & tape - large size	10.00 EA	0.00	4.21	42.10
1. Batt insulation - 4" - R13	30.67 SF	0.00	0.49	15.03
2. Drywall repair - Minimum charge	1.00 EA	0.00	445.00	445.00
3. Drywall replacement per LF - up to 2' tall	20.17 LF			INCLUDED
4. Texture drywall - heavy hand texture	60.50 SF			INCLUDED
5. Remove Baseboard - 2 1/4"	22.92 LF	0.31	0.00	7.11
6. Baseboard - 2 1/4"	64.33 LF	0.00	2.25	144.74
<i>This includes base to go around closet opening</i>				
7. Trim board - 1" x 6" - installed (pine)	6.67 LF	0.00	3.91	26.08
8. Seal the surface area w/latex based stain blocker - one coat	60.50 SF	0.00	0.32	19.36
9. Paint the walls - one coat	506.00 SF	0.00	0.35	177.10

R1207012_RES

7/18/2012

Page: 2

07/18/2012 13:55 FAX 9093072774

003/009



Full Service For Restoration & Contents in San Bernardino, L.A & Orange County

Padgett's Cleaning & Restoration
 535 New Jersey St
 Redlands, CA 92373
 Phone: (800) 273-1194 Fax: (909) 307-2775
 EIN 33-0546368

CONTINUED - Bedroom1

DESCRIPTION	QNTY	REMOVE	REPLACE	TOTAL
10. Paint baseboard - two coats	64.33 LF	0.00	0.93	59.83
11. Seal & paint trim - two coats	6.67 LF	0.00	0.86	5.74
12. Remove Carpet	143.33 SF	0.21	0.00	30.10
13. Remove Carpet pad	143.33 SF	0.09	0.00	12.90
14. Carpet pad	183.24 SF	0.00	0.47	86.12
15. Carpet	210.72 SF	0.00	3.24	682.73
15 % waste added for Carpet.				
16. Detach & Reset Window drapery - hardware	1.00 EA	0.00	0.00	32.36
<i>Needs to be taken down for painting</i>				
17. Detach & Reset Bifold door set - lauan/mahogany - Double	1.00 EA	0.00	0.00	41.33
Totals: Bedroom1				2,027.67



Bedroom2

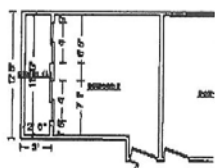
Height: 8'

318.00 SF Walls	128.35 SF Ceiling
446.35 SF Walls & Ceiling	128.35 SF Floor
14.26 SY Flooring	38.00 LF Floor Perimeter
48.50 LF Ceil. Perimeter	

Door

2' 6" X 6' 8"

Opens into HALLWAY



Subroom 1: CLOSET

Height: 8'

176.00 SF Walls	29.58 SF Ceiling
205.58 SF Walls & Ceiling	29.58 SF Floor
3.29 SY Flooring	20.67 LF Floor Perimeter
28.67 LF Ceil. Perimeter	

Door

4' X 6' 8"

Opens into BEDROOM2

Door

4' X 6' 8"

Opens into BEDROOM2

DESCRIPTION	QNTY	REMOVE	REPLACE	TOTAL
-------------	------	--------	---------	-------

42. Content Manipulation charge - per hour	6.00 HR	0.00	41.76	250.56
--	---------	------	-------	--------

1207012_RES

7/18/2012

Page: 3

07/18/2012 13:56 FAX 9093072774

004/009



Full Service For Restoration & Contents in San Bernardino, L.A & Orange County

Padgett's Cleaning & Restoration
 535 New Jersey St
 Redlands, CA 92373
 Phone: (800) 273-1194 Fax: (909) 307-2775
 EIN 33-0546368

CONTINUED - Bedroom2

DESCRIPTION	QNTY	REMOVE	REPLACE	TOTAL
44. Provide box, packing paper & tape - medium size	10.00 EA	0.00	3.30	33.00
45. Provide box, packing paper & tape - extra large size	10.00 EA	0.00	5.18	51.80
18. Batt insulation - 4" - R13	29.17 SF	0.00	0.49	14.29
19. Drywall replacement per LF - up to 2' tall	20.25 LF			INCLUDED
20. Texture drywall - heavy hand texture	60.75 SF			INCLUDED
21. Remove Baseboard - 2 1/4"	21.08 LF	0.31	0.00	6.53
22. Baseboard - 2 1/4"	59.50 LF	0.00	2.25	133.88
<i>This includes base for around the closet opening.</i>				
23. Trim board - 1" x 6" - installed (pine)	6.67 LF	0.00	3.91	26.08
24. Seal the surface area w/latex based stain blocker - one coat	60.75 SF	0.00	0.32	19.44
25. Paint the walls - one coat	494.00 SF	0.00	0.35	172.90
26. Paint baseboard - one coat	59.50 LF	0.00	0.61	36.30
27. Seal & paint trim - two coats	6.67 LF	0.00	0.86	5.74
28. Remove Carpet	130.33 SF	0.21	0.00	27.37
29. Remove Carpet pad	130.33 SF	0.09	0.00	11.73
30. Carpet pad	157.93 SF	0.00	0.47	74.23
31. Carpet	181.62 SF	0.00	3.24	588.45
15 % waste added for Carpet.				
32. Detach & Reset Window drapery - hardware	1.00 EA	0.00	0.00	32.36
<i>Needs to be taken down for painting.</i>				
33. Detach & Reset Bifold door set - lauan/mahogany - Double	1.00 EA	0.00	0.00	41.33
Totals: Bedroom2				1,525.99

1207012_RES

7/18/2012

Page: 4

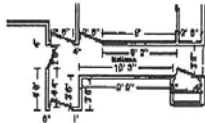
07/18/2012 13:56 FAX 9093072774

005/009



Full Service For Restoration & Contents in San Bernardino, L.A & Orange County

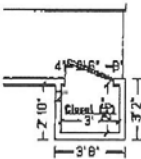
Padgett's Cleaning & Restoration
 535 New Jersey St
 Redlands, CA 92373
 Phone: (800) 273-1194 Fax: (909) 307-2775
 EIN 33-0546368



Hallway Height: 8'

273.96 SF Walls	70.86 SF Ceiling
344.81 SF Walls & Ceiling	70.86 SF Floor
7.87 SY Flooring	32.16 LF Floor Perimeter
44.66 LF Ceil. Perimeter	

Door	2' 6" X 6' 8"	Opens into Exterior
Door	2' 6" X 6' 8"	Opens into Exterior
Missing Wall	3' 6" X 8'	Opens into Exterior
Door	2' 6" X 6' 8"	Opens into BEDROOM1
Door	2' 6" X 6' 8"	Opens into BEDROOM2



Subroom 1: CLOSET Height: 8'

71.33 SF Walls	7.50 SF Ceiling
78.83 SF Walls & Ceiling	7.50 SF Floor
0.83 SY Flooring	8.50 LF Floor Perimeter
11.00 LF Ceil. Perimeter	

Door	2' 6" X 6' 8"	Opens into HALLWAY
------	---------------	--------------------

DESCRIPTION	QNTY	REMOVE	REPLACE	TOTAL
-------------	------	--------	---------	-------

Carpet is continous from bedroom into hallway. Carpet does stop at entry and master bedroom.

34. Remove Carpet	78.36 SF	0.21	0.00	16.46
35. Remove Carpet pad	78.36 SF	0.09	0.00	7.05
36. Carpet pad	78.36 SF	0.00	0.47	36.83
37. Carpet	90.11 SF	0.00	3.24	291.96
15 % waste added for Carpet.				
38. Seam carpet	3.00 LF	0.00	3.69	11.07

Totals: Hallway				363.37
-----------------	--	--	--	--------

Exterior

DESCRIPTION	QNTY	REMOVE	REPLACE	TOTAL
-------------	------	--------	---------	-------

39. Clean with pressure/chemical spray	782.00 SF	0.00	0.26	203.32
--	-----------	------	------	--------

1207012_RES

7/18/2012

Page: 5

07/18/2012 13:56 FAX 9093072774

008/008



Full Service For Restoration & Contents in San Bernardino, L.A & Orange County

Padgett's Cleaning & Restoration
 535 New Jersey St
 Redlands, CA 92373
 Phone: (800) 273-1194 Fax: (909) 307-2775
 EIN 33-0546368

CONTINUED - Exterior

DESCRIPTION	QNTY	REMOVE	REPLACE	TOTAL
40. General Laborer - per hour	2.00 HR	0.00	41.76	83.52
Labor to groom gravel due to it being shifted by the water flowing through the yard.				
Totals: Exterior				286.84
Total: Main Level				4,203.87
Line Item Totals: R1207012_RES				4,203.87

Grand Total Areas:

1,345.29 SF Walls	419.52 SF Ceiling	1,764.82 SF Walls and Ceiling
419.52 SF Floor	46.61 SY Flooring	158.83 LF Floor Perimeter
0.00 SF Long Wall	0.00 SF Short Wall	214.83 LF Ceil. Perimeter
419.52 Floor Area	472.66 Total Area	1,345.29 Interior Wall Area
882.17 Exterior Wall Area	104.83 Exterior Perimeter of Walls	
0.00 Surface Area	0.00 Number of Squares	0.00 Total Perimeter Length
0.00 Total Ridge Length	0.00 Total Hip Length	

R1207012_RES

7/18/2012

Page: 6

07/18/2012 13:56 FAX 9093072774

007/009



Full Service For Restoration & Contents in San Bernardino, L.A & Orange County

Padgett's Cleaning & Restoration
 535 New Jersey St
 Redlands, CA 92373
 Phone: (800) 273-1194 Fax: (909) 307-2775
 EIN 33-0546368

Summary			
Line Item Total			4,203.87
Material Sales Tax	@	7.750% x	1,732.02
			134.23
Overhead	@	10.0% x	4,338.10
Profit	@	10.0% x	433.81
			433.81
Replacement Cost Value			\$5,205.72
Net Claim			\$5,205.72

Logan

07/18/2012 13:56 FAX 9093072774

008/009



Full Service For Restoration & Contents in San Bernardino, L.A & Orange County

Padgett's Cleaning & Restoration
 535 New Jersey St
 Redlands, CA 92373
 Phone: (800) 273-1194 Fax: (909) 307-2775
 EIN 33-0546368

Recap by Category

O&P Items	Total	%
CLEANING	203.32	3.91%
CONTENT MANIPULATION	417.60	8.02%
CONT: PACKING,HANDLNG,STORAGE	159.90	3.07%
GENERAL DEMOLITION	119.25	2.29%
DOORS	82.66	1.59%
DRYWALL	445.00	8.55%
FLOOR COVERING - CARPET	1,771.39	34.03%
FINISH CARPENTRY / TRIMWORK	330.78	6.35%
INSULATION	29.32	0.56%
LABOR ONLY	83.52	1.60%
PAINTING	496.41	9.54%
WINDOW TREATMENT	64.72	1.24%
O&P Items Subtotal	4,203.87	80.75%
Material Sales Tax @ 7.750%	134.23	2.58%
Overhead @ 10.0%	433.81	8.33%
Profit @ 10.0%	433.81	8.33%
Total	5,205.72	100.00%



Director Memorandum 12-071

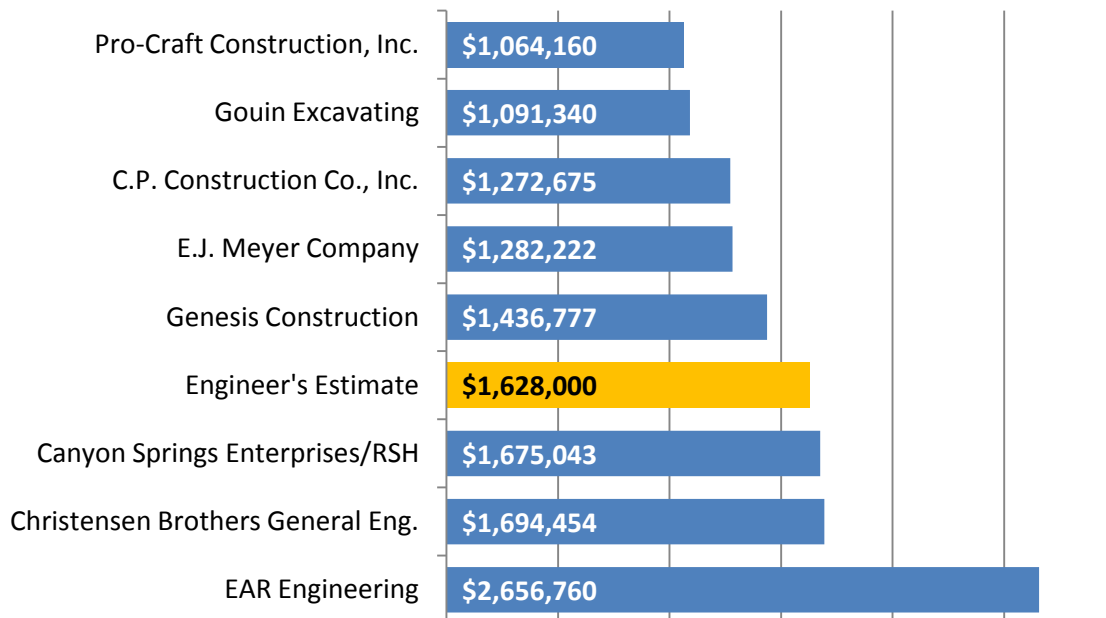
Date: August 15, 2012

Prepared By: Brent Anton, Engineering Manager

Subject: Award of a Construction Contract for the Crow Street Non-Potable Water Pipeline

Recommendation: That the Board awards a construction contract to Pro-Craft Construction, Inc. for a sum not to exceed \$1,064,160.

At the regular meeting on May 16, 2012, the Board authorized staff to solicit bids for the construction of the Crow Street Recycled Water Pipeline [DM12-043]. On Tuesday, August 7, 2012, the Yucaipa Valley Water District opened eight bids with the following results:



The bid submittals have been reviewed by Krieger & Stewart with a recommendation of award in the attached letter.



INCORPORATED • ENGINEERING CONSULTANTS

3602 University Ave • Riverside, CA 92501 • Tel 951-684-6900 • Fax 951-684-6986

August 8, 2012

818-69.6 F/C

Brent Anton
 Yucaipa Valley Water District
 12770 Second Street
 Yucaipa, CA 92399

Subject: Crow Street Non-Potable Waterline Project
 Bid Results and Award Recommendation

Dear Mr. Anton:

On August 7, 2012, the Yucaipa Valley Water District (District) received eight bids for subject project; the results are as follows:

<u>Contractor</u>	<u>Bid Amount</u>
Pro-Craft Construction	\$1,064,160.00
Gouin Excavating	\$1,091,340.00
CP Construction Co.	\$1,272,675.00
E.J. Meyer Company	\$1,282,222.00
Genesis Construction	\$1,436,777.00
RSH Construction	\$1,675,043.00
Christensen Brothers	\$1,694,454.49
EAR Engineering	\$2,656,760.00

The low bidder is Pro-Craft Construction, Inc. in the amount of \$1,064,160.00. We have reviewed Pro-Craft Construction, Inc.'s bid documents and all are in order.

As part of our bid review, we checked Pro-Craft Construction, Inc.'s contractor's license to verify that it is current and active, and found that it is currently listed as "Active" on the Contractor's State License Board website, but it is "Pending Disciplinary Action". Upon inquiry of the Contractor's State License Board, we were referred to Jim Ledakis of the State Attorney General's office. Mr. Ledakis provided a copy of the accusation against Pro-Craft Construction, Inc.; a one-day hearing is tentatively scheduled to be held in March, 2013.



Brent Anton
August 8, 2012
Page 2

Since the outcome of the pending disciplinary action will not be known until at least March of 2013, and since Pro-Craft Construction, Inc. is a capable contractor with a current Class A Contractor's License (No. 467234), we recommend award of subject work to Pro-Craft Construction, Inc. in the amount of \$1,064,160.00.

If you have any questions, please call.

Sincerely,

KRIEGER & STEWART

A handwritten signature in blue ink that reads "Patrick M. Watson". The signature is written in a cursive style.

Patrick M. Watson

PMW/blt
818-69-RECAWARD

DIRECTOR COMMENTS

ANNOUNCEMENTS