



Yucaipa Valley Water District

12770 Second Street, Yucaipa, California 92399 Phone: (909) 797-5117

Notice and Agenda of a Regular Meeting of the Board of Directors

Wednesday, May 18, 2016 at 6:00 p.m.

- I. **CALL TO ORDER** - Pledge of Allegiance
- II. **ROLL CALL**
- III. **PUBLIC COMMENTS** - At this time, members of the public may address the Board of Directors on matters within its jurisdiction. To provide comments on specific agenda items, please complete a speaker's request form and provide the completed form to the Board Secretary prior to the board meeting.
- IV. **CONSENT CALENDAR** - All matters listed under the Consent Calendar are considered by the Board of Directors to be routine and will be enacted in one motion. There will be no discussion of these items prior to the time the board considers the motion unless members of the board, the administrative staff, or the public request specific items to be discussed and/or removed from the Consent Calendar.
 - A. Minutes of Meetings
 - 1. Regular Board Meeting - April 20, 2016
 - 2. Board Workshop - April 26, 2016
 - 3. Board Workshop - May 11, 2016
 - B. Payment of Bills
 - 1. Approve/Ratify Invoices for Board Awarded Contracts
 - 2. Ratify General Expenses for April 2016
- V. **STAFF REPORT**
- VI. **DISCUSSION ITEMS**
 - A. Unaudited Financial Report for the Period Ending on April 30, 2016 [[Director Memorandum No. 16-043 - Page 20 of 77](#)]
RECOMMENDED ACTION: That the Board receives and files the unaudited financial report as presented.

Any person with a disability who requires accommodation in order to participate in this meeting should telephone Tysa Baeumel at (909) 797-5117 at least 48 hours prior to the meeting in order to make a request for a disability-related modification or accommodation.

Materials related to an item on this agenda submitted to the Board of Directors after distribution of the board meeting packet are available for public inspection during normal business hours at the District office located at 12770 Second Street, Yucaipa. Meeting material is also be available on the District's website at www.yvwd.dst.ca.us

- B. Selection of a Candidate Representing Special Districts on the Local Agency Formation Commission - San Bernardino [[Director Memorandum No. 16-044 - Page 49 of 77](#)]
 RECOMMENDED ACTION: That the Board selects a candidate and directs District staff to submit the completed ballot to the Local Agency Formation Commission.
- C. Consideration of Development Agreement No. 2016-04 to Provide Water and Sewer Facilities and Service to the Private Development of Parcel Map 19647, SFP-E, LLC (Assessor's Parcel Number 0318-131-05) [[Director Memorandum No. 16-045 - Page 55 of 77](#)]
 RECOMMENDED ACTION: That the Board of Directors approve Development Agreement No. 2016-04 as presented.
- D. Authorization to Solicit Bids for Security Fencing for the Recycled Water Booster NB-12.3 Site [[Director Memorandum No. 16-046 - Page 63 of 77](#)]
 RECOMMENDED ACTION: That the Board authorizes the District staff to solicit construction bids for the installation of the fencing.
- E. Recognition of Bob Wall on the Occasion of his Retirement from the Yucaipa Valley Water District [[Director Memorandum No. 16-047 - Page 65 of 77](#)]
 RECOMMENDED ACTION: That the Board adopts Resolution No. 2016-15.

VII. BOARD REPORTS & DIRECTOR COMMENTS

- A. San Gorgonio Pass Regional Water Alliance - April 27, 2016
- B. Special Meeting at the Beaumont Cherry Valley Water District - April 28, 2016
- C. Special Meeting of the San Gorgonio Pass Regional Water Alliance - May 5, 2016
- D. Special Meeting of the Board of Directors for Participation at the San Gorgonio Pass Water Agency Allocation Workshop - May 10, 2016
- E. Reports by Board Members

VIII. ANNOUNCEMENTS

- A. May 24, 2016 at 4:00 p.m. - Board Workshop
- B. May 25, 2016 at 5:00 p.m. - San Gorgonio Pass Regional Water Alliance at the City of Banning
- C. May 26, 2016 at 6:00 p.m. - Special Board Meeting at Beaumont Cherry Valley Water District
- D. June 1, 2016 at 6:00 p.m. - Regular Board Meeting
- E. June 7, 2016 at 4:00 p.m. - Board Workshop
- F. June 15, 2016 at 6:00 p.m. - Regular Board Meeting
- G. June 28, 2016 at 4:00 p.m. - Board Workshop
- H. July 6, 2016 at 6:00 p.m. - Regular Board Meeting

IX. ADJOURNMENT

Consent Calendar



Yucaipa Valley Water District

MINUTES OF A REGULAR BOARD MEETING

April 20, 2016 at 6:00 P.M.

Directors Present:

Lonni Granlund, President
Jay Bogh, Vice President
Bruce Granlund, Director
Ken Munoz, Director
Tom Shalhoub, Director

Staff Present:

Joseph Zoba, General Manager
Jennifer Ares, Water Resource Manager
Vicky Elisalda, Controller
John Hull, Public Works Manager
Brent Anton, Engineering Manager
John Wrobel, Regulatory & Environmental Control
Manager
Mike Kostelecky, Senior Plant Operator
Ron McCall, Senior Plant Operator

Directors Absent:

None

Consulting Staff Present:

David Wysocki, Legal Counsel

Registered Guests and Others Present:

Linda Shelton, Customer
David Duron, Customer
Chris Hollenbeck, Customer
Kylie Knudsen, Customer
Austin Reykdal, Customer
Richard Reykdal, Customer
Joyce Heller, Customer
Leonard Stevenson, San Gorgonio Pass Water Agency
David Fenn, San Gorgonio Pass Water Agency
Karen Da Silva, News-Mirror

The regular meeting of the Board of Directors of the Yucaipa Valley Water District was called to order by Director Lonni Granlund at 6:00 p.m. at the Administrative Office Building, 12770 Second Street, Yucaipa, California.

CALL TO ORDER

Director Jay Bogh led the pledge of allegiance.

FLAG SALUTE

The roll was called and Director Jay Bogh, Director Bruce Granlund, Director Lonni Granlund, Director Ken Munoz, and Director Tom Shalhoub were present.

ROLL CALL

David Duron provided information about issues regarding the San Bernardino Valley Municipal Water District.

PUBLIC COMMENTS

Director Jay Bogh moved to approve the consent calendar and Director Bruce Granlund seconded the motion to approve the consent calendar.

CONSENT CALENDAR

A. Minutes of Meetings

1. Regular Board Meeting - March 16, 2016
2. Board Workshop - March 29, 2016
3. Regular Board Meeting - April 6, 2016
4. Board Workshop - April 12, 2016

B. Payment of Bills

1. Approve/Ratify Invoices for Board Awarded Contracts
2. Ratify General Expenses for March 2016

The motion was approved by the following vote:

Director Jay Bogh - Yes
Director Bruce Granlund - Yes
Director Lonni Granlund - Yes
Director Ken Munoz - Yes
Director Tom Shalhoub - Yes

General Manager Joseph Zoba discussed the following items:

- A special board meeting will be conducted on April 28, 2016 at 6:00 p.m. to discuss the implementation of an allocation plan in the San Gorgonio Pass area.
- The District will be conducting a budget workshop on April 26, 2016.

STAFF REPORT

DISCUSSION ITEMS:

Following a staff presentation by Engineering Manager Brent Anton, Director Tom Shalhoub moved and Director Ken Munoz seconded a motion to approve Development Agreement No. 2016-03 as presented.

The motion was approved by the following vote:

Director Jay Bogh - Yes
Director Bruce Granlund - Yes
Director Lonni Granlund - Yes
Director Ken Munoz - Yes
Director Tom Shalhoub - Yes

DM 16-038
CONSIDERATION OF
DEVELOPMENT
AGREEMENT NO.
2016-03 TO PROVIDE
SEWER FACILITIES
AND SERVICE TO THE
PRIVATE
DEVELOPMENT OF
TRACT MAP 36818,
MBTK HOMES, LLC
(ASSESSOR'S
PARCEL NUMBERS
411-150-025, 411-150-
026 AND 411-150-027)

Following a staff presentation by Controller Vicky Elisalda, Director Ken Munoz moved and Director Tom Shalhoub seconded a motion to receive and file the unaudited financial report as presented.

The motion was approved by the following vote:

Director Jay Bogh - Yes
Director Bruce Granlund - Yes
Director Lonni Granlund - Yes
Director Ken Munoz - Yes

DM 16-039
UNAUDITED
FINANCIAL REPORT
FOR THE PERIOD
ENDING ON MARCH
31, 2016

Director Tom Shalhoub - Yes

Following a staff presentation by General Manager Joseph Zoba, Director Ken Munoz moved and Director Jay Bogh seconded a motion to authorize the General Manager to execute the necessary agreements with the San Bernardino Valley Municipal Water District to secure 0.5 million gallons per day of Pipeline Capacity and 0.3 million gallons per day of Treatment and Disposal Capacity in the Inland Empire Brineline for a sum not to exceed \$3,212,643..

The motion was approved by the following vote:

Director Jay Bogh - Yes
Director Bruce Granlund - Yes
Director Lonni Granlund - Yes
Director Ken Munoz - Yes
Director Tom Shalhoub - Yes

Following a staff presentation by General Manager Joseph Zoba, Director Lonni Granlund moved and Director Bruce Granlund seconded a motion to file the Notice of Completion.

The motion was approved by the following vote:

Director Jay Bogh - Yes
Director Bruce Granlund - Yes
Director Lonni Granlund - Yes
Director Ken Munoz - Yes
Director Tom Shalhoub - Yes

Following a staff presentation by General Manager Joseph Zoba and comments from Joyce Heller and Richard Reykdal, Director Jay Bogh moved and Director Ken Munoz seconded a motion to adopt Resolution No. 2016-14.

The motion was approved by the following vote:

Director Jay Bogh - Yes
Director Bruce Granlund - Yes
Director Lonni Granlund - Yes
Director Ken Munoz - Yes
Director Tom Shalhoub - Yes

DM 16-040
CONSIDERATION OF
AN AGREEMENT TO
PURCHASE INLAND
EMPIRE BRINE LINE
CAPACITIES FROM
THE SAN
BERNARDINO VALLEY
MUNICIPAL WATER
DISTRICT

DM 16-041
NOTICE OF
COMPLETION FOR
THE CONSTRUCTION
CONTRACT WITH
DUSTIN SMITH
EQUIPMENT, DSE
GRADING AND DEMO
FOR THE DEMOTION
OF THE BUILDING,
BASEMENT AND
FOUNDATION AT
35192 CEDAR STREET
AVENUE, YUCAIPA

DM 16-042
CONSIDERATION OF
RESOLUTION NO.
2016-14 AUTHORIZING
THE INSTALLATION
OF FIRE HYDRANTS
FOR IMPROVED FIRE
SUPPRESSION IN
PUBLIC RIGHT-OF-
WAYS TO PROTECT
EXISTING
STRUCTURES AND
CUSTOMERS OF THE
YUCAIPA VALLEY
WATER DISTRICT

Reports by Board Members

- Director Jay Bogh and Director Tom Shalhoub reported on the State of the City of Yucaipa meeting held on April 14, 2016.

BOARD REPORTS &
DIRECTOR
COMMENTS

Director Lonni Granlund called attention to the announcements listed on the agenda.

ANNOUNCEMENTS

The meeting was adjourned at 7:10 p.m.

ADJOURNMENT

Respectfully submitted,

Joseph B. Zoba, Secretary

(Seal)

MINUTES OF A BOARD WORKSHOP

April 26, 2016 at 4:00 P.M.

Directors Present:

Lonni Granlund, President
Bruce Granlund, Director
Ken Munoz, Director
Tom Shalhoub, Director

Staff Present:

Joseph Zoba, General Manager
Jack Nelson, Assistant General Manager
Vicky Elisalda, Controller
John Hull, Public Works Manager
Brent Anton, Engineering Manager
John Wrobel, Regulatory & Environmental Control
Manager
Jennifer Ares, Water Resource Manager
Mike Kostelecky, Senior Plant Operator
Ron McCall, Senior Plant Operator
Kevin King, Operations Manager
Peggy Little, Administrative Supervisor
Matt Porras, Integrated Operator II

Directors Absent:

Jay Bogh, Vice President

Consulting Staff Present:

David Wysocki, Legal Counsel

Registered Guests and Others Present:

David Duron, Customer
Richard Siegmund, Customer
Linda Shelton, Customer

- I. Call to Order - 4:00 p.m.
- II. Public Comments - The following comments were provided by individuals in the audience:
 - David Duron requested information about locating the sewer lateral on his property.
- III. Staff Report - General Manager Joseph Zoba discussed the following topics:
 - The California Department of Water Resources has increased the allocation of water from the State Water Project to 60%.
- IV. Administrative Issues
 - A. Overview of the Operating Budget and Capital Improvement Plan for Fiscal Year 2017 [Workshop Memorandum No. 16-076] - The District staff members and the Board of Directors reviewed and discussed each line item of the proposed operational budget for Fiscal Year 2017.
- V. Director Comments
 - There were no additional director comments.
- VI. Adjournment - The meeting was adjourned at 5:35 p.m.

Respectfully submitted,

Joseph B. Zoba, Secretary

MINUTES OF A BOARD WORKSHOP

May 11, 2016 at 4:00 P.M.

Directors Present:

Lonni Granlund, President
Jay Bogh, Vice President
Bruce Granlund, Director
Ken Munoz, Director

Staff Present:

Joseph Zoba, General Manager
Jack Nelson, Assistant General Manager
Vicky Elisalda, Controller
John Hull, Public Works Manager
Brent Anton, Engineering Manager
John Wrobel, Regulatory & Environmental Control
Manager
Jennifer Ares, Water Resource Manager
Mike Kostelecky, Senior Plant Operator
Ron McCall, Senior Plant Operator

Directors Absent:

Tom Shalhoub, Director

Consulting Staff Present:

David Wysocki, Legal Counsel

Registered Guests and Others Present:

David Duron, Customer
Richard Siegmund, Customer
Larry Anderson, Customer
Helen Anderson, Customer
Donna Solomon, Garden Works for Kids

- I. Call to Order - 4:00 p.m.
- II. Public Comments - The following comments were provided by individuals in the audience:
 - David Duron provided information about the new water conservation regulations proposed by the State Water Resources Control Board.
 - Donna Solomon provided information about Garden Works for Kids located at 10966 Bryant Street, Yucaipa.
- III. Staff Report - General Manager Joseph Zoba discussed the following topics:
 - There will be a meeting of retail water suppliers and wholesale water suppliers in the San Gorgonio Pass area on Thursday, May 26, 2016 at 6:00 pm. The meeting will be held at the Beaumont Cherry Valley Water District office in Beaumont.
 - The District will be hosting a recycled water training session and a community meeting on Thursday, June 2, 2016.
- IV. Presentations
 - A. Overview of the California Drought and Yucaipa Valley Water District's Action Plan Related to the State Water Resources Control Board Mandatory Restrictions to Achieve a 34% Reduction in Potable Urban Water Use [Workshop Memorandum No. 16-077] - General Manager Joseph Zoba reported on the District's water conservation efforts and the steps taken to achieve the required 34% water conservation goal required by the State Water Resources Control Board. General Manager Joseph Zoba also provided information about the newly revised water conservation regulations that provide self-certification by water retailers.

- B. Presentation of the Regional Water Allocation Agreement for Water Imported by the San Gorgonio Pass Water Agency [Workshop Memorandum No. 16-078] - General Manager Joseph Zoba provided an overview of the allocation plan for the San Gorgonio Pass area.
- V. Capital Improvement Projects
 - A. Status Report on the Construction of a 6.0 Million Gallon Drinking Water Reservoir R-12.4 - Calimesa [Workshop Memorandum No. 16-079] - Engineering Manager Brent Anton provided an overview of the Reservoir R-12.4 project construction.
 - B. Status Report on the Construction of an Interim Recycled Water Booster Station NB-12.3 [Workshop Memorandum No. 16-080] - Engineering Manager Brent Anton provided an overview of the Recycled Water Booster Station project construction.
- VI. Development Projects
 - A. Overview of Draft Development Agreements for Two Commercial Projects Located in Yucaipa [Workshop Memorandum No. 16-081] - General Manager Joseph Zoba provided information about two development projects in Yucaipa.
- VII. Administrative Items
 - A. Special Districts Election for the Regular Special District Member of the Local Agency Formation Commission - San Bernardino County [Workshop Memorandum No. 16-082] - General Manager Joseph Zoba provided a brief overview of the LAFCO ballot process.
 - B. Review of the Unaudited Financial Report for the Period Ending on April 30, 2016 [Workshop Memorandum No. 16-083] - Controller Vicky Elisalda provided an overview of the Unaudited Financial Report.
- VIII. Director Comments
 - Director Ken Munoz asked the District staff about the use of stainless steel valve stems.
- IX. Adjournment - The meeting was adjourned at 5:15 p.m.

Respectfully submitted,

Joseph B. Zoba, Secretary

Board Awarded Contracts
Consent Calendar Regular Meeting - May 18, 2016

District Awarded Contracts	Director Memorandum	Job or GL #	Job Cost Breakdown	Awarded Contract Amount	Prior Payments to Date	Pending Invoice Amount	Total Contract Payments	Remaining Contract Amount	Percent Remaining	Encumbered Funds - Remaining Contract Amount				
										General Operating Expenses	Water Division Funds	Sewer Division Funds	Recycled Division Funds	Other Funds
Aklufi & Wysocki - FY 2016 Legal Services (Operating)	--	*-5-06-54107	--	--	\$42,713	\$4,388	\$47,100							
DDB Engineering (R-Reserves)	15-086	04-19771	--	\$35,900	\$18,041	\$0	\$18,041	\$17,859	50%				\$17,859	
Application to DDW for the Recharge at Wilson Creek Basins														
Delta Partners \$90,000 per year-Legislative Consult (exp 12/18) WAS Oper	13-079	*-5-06-54109	--	\$90,000	\$22,500	\$7,500	\$30,000	\$60,000	67%	\$60,000				
Dudek (S-Operating)	16-009	03-5-06-54109	--	\$95,660	\$27,850	\$17,728	\$45,578	\$50,082	52%	\$50,082				
2016-Max Benefit Monitoring for San Timoteo/Yucaipa Mgmt Zones														
Dudek (R-Operating)	15-098	04-5-06-57030	--	\$59,747	\$6,633	\$538	\$7,170	\$52,577	88%	\$52,577				
Install Groundwater Observation Wells near San Timoteo Creek														
Gateway Pacific Contractors, Inc. (Scip Funds)	14-091	SCIP funding	--	\$7,520,080	\$6,143,379	\$98,140	\$6,241,519	\$1,278,561	17%					\$1,278,561
Construction of 6.0 MG Reservoir R-12.4														
Geoscience (R-Operating)		04-5-06-54109		\$51,710	\$40,690	\$0	\$40,690	\$11,020	21%	\$11,020				
Preparation of a groundwater model for the Gateway Basin	14-070		\$35,320											
CO #1 - preparation of groundwater model	15-010		\$16,390											
Harper & Associates (W-Operating)														
Engineering, Project Mgmt & Inspection Svcs for coating repairs YVRWFF	15-062	02-5-01-57040	\$16,615	\$16,615	\$13,990	\$0	\$13,990	\$2,625	16%	\$2,625				
J. Colon Coatings (W-Operating)														
Coating Repairs at YVRWFF	15-112	02-5-01-57040	\$61,215	\$64,125	\$60,919	\$3,206	\$64,125	\$0	0%	\$0				
CO #1	16-027		\$2,910											
Krieger & Stewart														
Initiate Design of R-12.4 (W-Reserves)	04-164	65-295	\$74,900	\$482,500	\$377,618	\$0	\$377,618	\$104,882	22%		\$104,882			
TO#4 Revised	05-075		\$600											
TO#4, Amendment #2	14-014		\$45,000											
TO#5- Construction Mgmt Services	14-092		\$482,500											
TO#5, Design R-13.4 and H-2 Reservoirs for JP Ranch	05-083	65-180	\$47,400	\$79,000	\$50,471	\$0	\$50,471	\$28,529	36%					\$28,529
60% R-13.4 and 40% H-2 (Developer Funds)	05-083	65-179	\$31,600											
TO#7, Design of a 24" Recycled Water Pipeline	11-091	04-9435	\$220,800	\$269,800	\$268,707	\$0	\$268,707	\$1,093	0%				\$1,093	
TO#7, Amendment #1 Addtl Design Costs	14-012		\$49,000											
One Stop Landscape Supply FY 2016 Sludge Hauling/Reuse (Oper)	--	03-5-02-57031	--	--	\$20,921	\$20,121	\$41,042							
Pascal & Ludwig (S-Reserves)	15-041	03-14500	\$2,175,000	\$2,242,347	\$1,442,710	\$107,449	\$1,550,159	\$692,188	31%			\$692,188		
Cleaning & replacement of 4 digester covers at WRWRF														
Additional coating repairs	16-008	03-1400	\$67,347											
Platinum Advisors (WAS Operating)														
FY 2016 Lobbyist N-T-E per month	13-080	02-5-06-54109	--	--	\$50,000	\$5,000	\$55,000							
FY 2016 Quarterly Filing & Misc. Expenses		02-5-06-54109	--	--	\$250	\$0	\$250							
RMC Water & Environment														
TO#25, Digester Cleaning & a Solids Process Cond Assess	12-066	88-12830	\$57,730	\$329,600	\$341,532	\$1,427	\$342,959	(\$13,359)	-4%			(\$13,359)		
TO#25, Amendment #1 (S-Reserves)	13-074	03-502-51003	\$271,870											

Board Awarded Contracts
Consent Calendar Regular Meeting - May 18, 2016

										Encumbered Funds - Remaining Contract Amount				
District Awarded Contracts	Director Memorandum	Job or GL #	Job Cost Breakdown	Awarded Contract Amount	Prior Payments to Date	Pending Invoice Amount	Total Contract Payments	Remaining Contract Amount	Percent Remaining	General Operating Expenses	Water Division Funds	Sewer Division Funds	Recycled Division Funds	Other Funds
TO#26, SRF Mgmt Svcs-Calimesa Regional Recycled Pipeline (R-FCC)	14-023	04-5-06-54109		\$95,692	\$47,811	\$0	\$47,811	\$47,881	50%				\$47,881	
Dewatering Equip Pilot Testing Support Svcs at WRWRF (S-Oper)	15-044	03-5-06-54109		\$45,000	\$38,877	\$0	\$38,877	\$6,123	14%	\$6,123				
Application to DDW for the Recharge at Wilson Creek Basins (R-Resvs)	15-086	04-19771	--	\$131,979	\$64,251	\$0	\$64,251	\$67,728	51%				\$67,728	
Separation Processes, Inc. (W-Reserves)		55-19200												
Design & Construction Supports Servs for NF SCRAM	15-047	02-14500		\$191,820	\$58,172	\$0	\$58,172	\$133,648	70%		\$133,648			
Application to DDW for the Recharge at Wilson Creek Basins (R-Resrvs)	15-086	04-19771	--	\$42,860	\$18,048	\$0	\$18,048	\$24,812	58%				\$24,812	
Skydrop Irrigation Controllers (W-Reserves Funds 25% Muni)		02-10310												
Purchase of Wi-Fi based irrigations controllers	15-043	02-11201	\$250,000	\$600,449	\$449,990	\$113,400	\$563,390	\$37,059	6%		\$37,059			
Purchase 500 additional controller	16-010	02-11201	\$100,000											
Purchase 1000 additional controllers	16-029	02-11201	\$200,000											
Paid from Muni (25% of set controllers)			\$50,449											
Vavrinek, Trine, Day & Company (VTD) (Operating)														
FY 2016 Auditing Services \$23,900 + \$3,500 for Single Audit	15-106	*-5-06-54108		\$23,900	\$0	\$0	\$0	\$23,900	100%	\$23,900				
FY 2017 Auditing Services \$23,900 + \$3,500 for Single Audit	15-106	*-5-06-54108												
FY 2018 Auditing Services \$23,900 + \$3,500 for Single Audit	15-106	*-5-06-54108												
FY 2019 Auditing Services \$23,900 + \$3,500 for Single Audit	15-106	*-5-06-54108												
Weka, Inc. (R-Reserves)	15-091	04-18508	--	\$317,772	\$0	\$168,170	\$168,170	\$149,602	47%				\$149,602	
Construction of NB-12.2 Recycled Water Booster Station														
GRAND TOTALS				\$12,501,529	\$9,638,816	\$547,066	\$10,185,882	\$2,776,811	--	\$206,328	\$275,590	\$678,829	\$308,975	\$1,307,090
										↓		↓		↓
										\$206,328		\$1,263,394		\$1,307,090
Approval of General Expenses April 2016 (Check Register Attached)														

Check Register - April 2016

<u>Check Date</u>	<u>Check Number</u>	<u>Name</u>	<u>Check Amount</u>
04/01/2016	25747	CalPERS - HEALTH	10,183.86
04/01/2016	25748	PAYROLL CHECK	2,024.22
04/01/2016	25749	Jason Gokei	582.00
04/01/2016	25750	CA-PERS Supplemental Income 45	17,752.73
04/01/2016	25751	WageWorks, Inc.	1,462.27
04/01/2016	25752	Public Employees' Retirement S	22,940.22
04/01/2016	25753	Hong Nelson	125.00
04/01/2016	25754	IBEW Local 1436	252.00
04/01/2016	25755	Franchise Tax Board	325.31
04/01/2016	25756	California State Disbursement	115.38
04/01/2016	25757	California State Disbursement	476.30
04/01/2016	25758	Department of the Treasury - I	125.00
04/04/2016	25759	MCCUE, MAISIE	7.31
04/04/2016	25760	MONTEJO, EUSEBIO	22.18
04/04/2016	25761	State Water Resources Control	340.00
04/04/2016	25762	Pacific Hydrotech Corporation	24,230.50
04/04/2016	25763	Courtland R. Gear	71.00
04/04/2016	25764	Aaron Blose	71.00
04/04/2016	25765	Laura Valdivieso	135.00
04/04/2016	25766	Ameripride Uniform Services	665.09
04/04/2016	25767	Randall L. and Leann L. Miller	505.00
04/04/2016	25768	Fedex	32.84
04/04/2016	25769	Raiset R. Santana and Adriana	63.50
04/04/2016	25770	Konica Minolta Business Soluti	2,009.84
04/04/2016	25771	Krieger & Stewart	42,999.12
04/04/2016	25772	Maintenance Connection Inc	6,199.29
04/04/2016	25773	NetComp Technologies, Inc.	2,950.00
04/04/2016	25774	Praxair Inc.	25.28
04/04/2016	25775	Pro-Pipe & Supply, Inc.	80.90
04/04/2016	25776	SCCI, Inc.	350.00
04/04/2016	25777	Association of San Bernardino	132.00
04/04/2016	25778	The Gas Company	302.67
04/04/2016	25779	Yucaipa Valley Chamber Of Comm	105.00
04/04/2016	25780	All American Sewer Tools	177.43
04/04/2016	25781	Auto Care Clinic	153.66
04/04/2016	25782	Edward S Babcock & Sons, Inc.	1,185.00
04/04/2016	25783	Bob Walker	1,188.00
04/04/2016	25784	Brenntag Pacific, Inc	8,841.65
04/04/2016	25785	Calolympic Glove & Safety Co.,	405.40
04/04/2016	25786	Victor James Valenti	3,271.60
04/04/2016	25787	Fastenal Company	304.97
04/04/2016	25788	Gallade Chemical	1,200.96
04/04/2016	25789	VOID CHECK	0.00
04/04/2016	25790	Alan L. Grubel Automotive Inc.	474.74
04/04/2016	25791	Hach Company	537.81
04/04/2016	25792	Inland Water Works Supply Co.	2,078.40
04/04/2016	25793	Innerline Engineering	3,500.00
04/04/2016	25794	Johnson Machinery Co.	2,127.92
04/04/2016	25795	Kevin E. French	15,000.00
04/04/2016	25796	Harold J. Cossette	8,613.00
04/04/2016	25797	Max Machinery, Inc.	1,022.62
04/04/2016	25798	Nuckles Oil Company, Inc.	3,643.44
04/04/2016	25799	Nagem, Inc.	770.97
04/04/2016	25800	Nalco Company	7,763.82
04/04/2016	25801	NCL Of Wisconsin Inc	152.62
04/04/2016	25802	Office Solutions Business Prod	451.75
04/04/2016	25803	Paxxo, Inc.	2,599.37
04/04/2016	25804	Redlands Ford	1,890.66
04/04/2016	25805	Riverside Winnelson Company	225.50
04/04/2016	25806	Sinclair Rock and Sand Inc.	1,500.00
04/04/2016	25807	Steven Enterprises, Inc	71.55
04/04/2016	25808	Utility Services Associates LL	12,891.00

Check Register - April 2016

<u>Check Date</u>	<u>Check Number</u>	<u>Name</u>	<u>Check Amount</u>
04/04/2016	25809	Yucaipa/Calimesa Fence Constru	1,980.00
04/04/2016	25810	Boot Barn #4	394.84
04/04/2016	25811	Gregory N. Godwin	194.19
04/04/2016	25812	Standard Insurance Company	2,720.28
04/04/2016	25813	Charlie Bailey	542.83
04/04/2016	25814	Anthem Blue Cross L and H	379.90
04/04/2016	25815	Standard Insurance Company	3,210.13
04/04/2016	25816	Standard Insurance Vision Plan	672.56
04/04/2016	25817	MetLife Small Business Center	502.33
04/04/2016	25818	CalPERS - HEALTH	565.53
04/04/2016	25819	Grainger	3,716.37
04/11/2016	25820	State Water Resources Control	230.00
04/11/2016	25821	CWEA-TCP (OAKPORT ST.)	81.00
04/11/2016	25822	ADS, LLC	3,951.00
04/11/2016	25823	Ralph C. Casas	72.50
04/11/2016	25824	Ameripride Uniform Services	515.37
04/11/2016	25825	AT&T Mobility	1,599.33
04/11/2016	25826	Best Home Center	6.13
04/11/2016	25827	Corelogic, Inc.	330.00
04/11/2016	25828	Crown Ace Hardware - Yucaipa	844.01
04/11/2016	25829	VOID CHECK	0.00
04/11/2016	25830	First American Data Tree, LLC	50.00
04/11/2016	25831	Hemet Manufacturing Co., Inc.	253.25
04/11/2016	25832	Alan L. Grubel Automotive Inc.	15.00
04/11/2016	25833	House Of Quality, Parts Plus	1,980.34
04/11/2016	25834	InfoSend, Inc.	5,140.19
04/11/2016	25835	Kelly Services, Inc.	1,069.20
04/11/2016	25836	Krieger & Stewart	13,601.06
04/11/2016	25837	Peterson Land & Development	5,050.00
04/11/2016	25838	Peterson Land & Development	5,550.00
04/11/2016	25839	San Gorgonio Pass Water Agency	8,034.00
04/11/2016	25840	Separation Processes, Inc.	668.00
04/11/2016	25841	State Water Resources Control	6,292.89
04/11/2016	25842	The Gas Company	179.61
04/11/2016	25843	Underground Service Alert Of S	213.00
04/11/2016	25844	Yucaipa Lawnmower Shop	34.00
04/11/2016	25845	News Mirror Publishing, Inc.	898.00
04/11/2016	25846	Fastenal Company	266.73
04/11/2016	25847	Fisher Scientific Co.	168.50
04/11/2016	25848	Fresno Oxygen	258.81
04/11/2016	25849	G&G Environmental Compliance,I	3,433.88
04/11/2016	25850	Hach Company	1,117.01
04/11/2016	25851	Hasa, Inc.	7,775.58
04/11/2016	25852	Industrial Safety Supply Corp	127.09
04/11/2016	25853	Inland Water Works Supply Co.	10,979.72
04/11/2016	25854	JCS Welding, Inc.	600.00
04/11/2016	25855	McCrometer, Inc.	4,149.03
04/11/2016	25856	Nuckles Oil Company, Inc.	2,880.60
04/11/2016	25857	Nagem, Inc.	663.57
04/11/2016	25858	NCL Of Wisconsin Inc	619.93
04/11/2016	25859	Office Solutions Business Prod	326.93
04/11/2016	25860	Pall Corporation	22,318.22
04/11/2016	25861	Pres-Tech Manufacturer's Repre	405.00
04/11/2016	25862	Q Versa, LLC	14,317.48
04/11/2016	25863	RDO Equipment Co.	728.52
04/11/2016	25864	Safeguard Business Systems Inc	1,188.81
04/11/2016	25865	Smart & Final Stores, LLC	94.24
04/11/2016	25866	HD Supply Facilities Maintenanc	762.87
04/15/2016	25867	PAYROLL CHECK	2,024.22
04/15/2016	25868	PAYROLL CHECK	969.70
04/15/2016	25869	CA-PERS Supplemental Income 45	19,735.67
04/15/2016	25870	WageWorks, Inc.	1,462.27

Check Register - April 2016

<u>Check Date</u>	<u>Check Number</u>	<u>Name</u>	<u>Check Amount</u>
04/15/2016	25871	Public Employees' Retirement S	23,082.54
04/15/2016	25872	Hong Nelson	125.00
04/15/2016	25873	Franchise Tax Board	325.31
04/15/2016	25874	California State Disbursement	115.38
04/15/2016	25875	California State Disbursement	476.30
04/15/2016	25876	Department of the Treasury - I	125.00
04/15/2016	25877	Boot Barn #4	200.00
04/15/2016	25878	Cypress Insurance Company	15,735.86
04/15/2016	25879	Jennifer Ares	43.64
04/18/2016	25880	Aklufi & Wysocki	5,175.00
04/18/2016	25881	Citizens Business Bank	6,500.00
04/18/2016	25882	DDB Engineering Inc.	4,208.24
04/18/2016	25883	Delta Partners, LLC	7,500.00
04/18/2016	25884	Dudek & Associates, Inc	15,332.82
04/18/2016	25885	Dustin Smith Equipment, Inc.	19,900.00
04/18/2016	25886	Fuel Equipment Services, Inc.	14,130.00
04/18/2016	25887	Krieger & Stewart	14,997.04
04/18/2016	25888	One Stop Landscape Supply Inc	23,947.50
04/18/2016	25889	Pascal & Ludwig Constructors I	123,500.00
04/18/2016	25890	Platinum Advisors, LLC	5,125.00
04/18/2016	25891	RMC Water and Environment	38,691.66
04/18/2016	25892	Sacramento Bank of Commerce	7,028.00
04/18/2016	25893	Separation Processes, Inc.	5,263.38
04/18/2016	25894	State Water Resources Control	230.00
04/18/2016	25895	Candice Mahan	100.00
04/18/2016	25896	Ameripride Uniform Services	769.16
04/18/2016	25897	Atkinson, Andelson, Loya, Ruud	2,425.14
04/18/2016	25898	Cherry Valley Feed & Pet Suppl	307.48
04/18/2016	25899	County of Riverside	1,032.00
04/18/2016	25900	Steven Eldridge	155.00
04/18/2016	25901	Fedex	23.59
04/18/2016	25902	Dustin Hochreiter	319.00
04/18/2016	25903	Kelly Services, Inc.	855.36
04/18/2016	25904	MailFinance Inc.	338.34
04/18/2016	25905	NetComp Technologies, Inc.	3,350.00
04/18/2016	25906	SB CNTY-Fire Protection Distri	1,866.00
04/18/2016	25907	The Counseling Team Internatio	420.00
04/18/2016	25908	AmeriGas Propane LP	4,139.31
04/18/2016	25909	Ampak Chemicals, Inc.	4,212.00
04/18/2016	25910	BofA Credit Card	195.64
04/18/2016	25911	Evoqua Water Technologies LLC	2,374.17
04/18/2016	25912	Hach Company	1,967.19
04/18/2016	25913	Inland Water Works Supply Co.	5,206.95
04/18/2016	25914	Nuckles Oil Company, Inc.	1,833.85
04/18/2016	25915	Nagem, Inc.	3,309.34
04/18/2016	25916	Office Solutions Business Prod	223.70
04/18/2016	25917	Pro-Pipe & Supply, Inc.	228.13
04/18/2016	25918	Red Alert Special Couriers	344.26
04/18/2016	25919	Steven Enterprises, Inc	356.29
04/18/2016	25920	Tri County Pump Company	9,981.56
04/18/2016	25921	Wilbur's	71.26
04/18/2016	25922	East Valley Water District	350.00
04/18/2016	25923	Dennis Neff	565.53
04/18/2016	25924	Gregory N. Godwin	194.19
04/18/2016	25925	Western Dental Services, Inc.	321.02
04/18/2016	25926	Charlie Bailey	542.83
04/18/2016	25927	Ron McCall	80.90
04/18/2016	25928	WageWorks, Inc.	212.75
04/18/2016	25929	CalPERS - HEALTH	118,750.15
04/25/2016	25930	State Water Resources Control	400.00
04/25/2016	25931	Ameripride Uniform Services	499.28
04/25/2016	25932	Burgeson's Heating & Air Cond.	1,485.00

Check Register - April 2016

<u>Check Date</u>	<u>Check Number</u>	<u>Name</u>	<u>Check Amount</u>
04/25/2016	25933	Cal-Mesa Steel Supply, Inc.	45.36
04/25/2016	25934	Central Communications	270.95
04/25/2016	25935	CHJ Consultants	10,047.00
04/25/2016	25936	Miriam Avalos	600.00
04/25/2016	25937	Coverall North America, Inc.	1,021.00
04/25/2016	25938	Frontier Communications	144.11
04/25/2016	25939	Incode Division-Tyler Technolo	22,059.62
04/25/2016	25940	InfoSend, Inc.	4,986.43
04/25/2016	25941	NetComp Technologies, Inc.	2,347.00
04/25/2016	25942	Peterson Land & Development	865.93
04/25/2016	25943	Safeguard Business Systems Inc	813.55
04/25/2016	25944	Skydrop Holdings, LLC	5,130.00
04/25/2016	25945	Southern CA Emergency Medicine	275.00
04/25/2016	25946	Anthony Joseph Sobral	47.14
04/25/2016	25947	Ampak Chemicals, Inc.	4,212.00
04/25/2016	25948	Brenntag Pacific, Inc	6,489.71
04/25/2016	25949	Charles P. Crowley Company, In	394.27
04/25/2016	25950	Center Electric	7,475.00
04/25/2016	25951	DC Frost Associates, Inc.	8,984.74
04/25/2016	25952	Evoqua Water Technologies LLC	561.05
04/25/2016	25953	Global Equipment Co., Inc	772.09
04/25/2016	25954	Alan L. Grubel Automotive Inc.	393.70
04/25/2016	25955	Haaker Equipment Company	466.00
04/25/2016	25956	Hasa, Inc.	3,668.01
04/25/2016	25957	Hemet Valley Tool & Supply	112.88
04/25/2016	25958	Inland Water Works Supply Co.	10,317.53
04/25/2016	25959	Innerline Engineering	5,250.00
04/25/2016	25960	Leroy's Landscape Services	580.00
04/25/2016	25961	McMaster-Carr Supply Co.	41.18
04/25/2016	25962	Nuckles Oil Company, Inc.	1,043.78
04/25/2016	25963	Nagem, Inc.	1,519.52
04/25/2016	25964	Office Solutions Business Prod	38.87
04/25/2016	25965	Pro-Pipe & Supply, Inc.	261.17
04/25/2016	25966	Riverside Winnelson Company	5,238.52
04/25/2016	25967	Steven Enterprises, Inc	450.18
04/25/2016	25968	Teledyne Isco, Inc.	219.24
04/25/2016	25969	Wilbur's	150.96
04/25/2016	25970	Ashley Hosmanek	71.00
04/25/2016	25971	Joseph H. Beltran	319.00
04/29/2016	25972	PAYROLL CHECK	2,027.71
04/29/2016	25973	Dale A. Fundak	130.00
04/29/2016	25974	Steven Eldridge	60.00
04/29/2016	25975	WageWorks, Inc.	1,462.27
04/29/2016	25976	Public Employees' Retirement S	22,973.34
04/29/2016	25977	Franchise Tax Board	242.90
04/29/2016	25978	California State Disbursement	115.38
04/29/2016	25979	California State Disbursement	476.30
04/29/2016	25980	Department of the Treasury - I	125.00
04/29/2016	25981	American Family Life Assurance	3,931.45
04/29/2016	25982	Timothy M. Mackamul	273.32
04/29/2016	25983	OSBORN, DARWIN L.	120.00
04/29/2016	25984	COTTRELL, RAYMOND	16.20
04/29/2016	25985	GONZALES, ANDREW	41.63
April 2016 Check Register Total			1,029,859.90

Staff Report



Yucaipa Valley Water District

Discussion Items





Date: May 18, 2016

Prepared By: Vicky Elisalda, Controller
Peggy Little, Administrative Supervisor

Subject: Unaudited Financial Report for the Period Ending on April 30, 2016

Recommendation: That the Board receives and files the unaudited financial report as presented.

The following unaudited financial report has been prepared by the Administrative Department for your review. The report has been divided into six sections to clearly disseminate information pertaining to the financial status of the District. Please remember that the following financial information has not been audited.

Cash Fund Balance Report

[Detailed information can be found on page 5 to 6 of 28]

The Cash Fund Balance Report provides a summary of how the total amount of funds maintained by financial institutions is distributed throughout the enterprise and non-enterprise funds of the District. A summary of the report is as follows:

Fund Source	Operating Funds	Restricted Funds	Total Funds
Water Division	\$7,013,420.94	\$2,112,734.56	\$9,126,155.50
Sewer Division	\$12,642,501.34	(\$4,700,514.61)	\$7,941,986.73
Recycled Water Division	<u>\$2,230,043.79</u>	<u>\$372,767.32</u>	<u>\$2,602,811.11</u>
Total	\$21,885,966.07	(\$2,215,012.73)	\$19,670,953.34

Most of the funds reflected in the Cash Fund Balance Report are designated for specific purposes and are therefore restricted, either by law or by District policy.

Check Register

[Detailed information can be found on pages 7 to 10 of 28]

The check register lists each check processed during the month of April 2016. The District processed 239 checks during the month of April for a total sum of \$1,029,859.90. All checks are reviewed by District staff for accuracy and completeness, and usually signed by the General Manager and one Director, but may be signed by two Directors.

The Controller will make any check, invoice or supporting documentation available for review to any board member upon request.

Financial Account Information

[Detailed information can be found on pages 11 to 15 of 29]

The District currently deposits all revenue received into the Deposit Checking account. The General Checking account is used as a sole processing account for all District checks and electronic payroll. The Investment Checking account is used for the purchase and redemption of US treasury notes and bills and for the transfer of LAIF funds. The US treasury notes and bills are booked at cost.

The LAIF investment account is a pooled money account administered by the State of California. Additional information on the LAIF account is provided below in the investment summary report.

Investment Summary

[Detailed information can be found on pages 16 to 17 of 29]

The investment summary report illustrates the District's investments in US treasury notes and bills in addition to the investments held by the Local Agency Investment Fund or LAIF. The yields for the treasury notes and bills are provided for each individual transaction. The historical annual yield for funds invested with LAIF is also provided.

Separate pooled money investment reports prepared by the State of California are maintained by the District and available for review.

Monthly Revenue Allocation

[Detailed information can be found on pages 18 to 19 of 29]

During the month of April 2016 the District's deposit checking account received a sum total of \$2,373,319.10 in revenues from the following categories:

- A total of \$1,609,798.43 was received from 15,010 customers for utility bill payments. This is the total amount of utility bill payments received from water, sewer and recycled services.
- A total of \$2,082.50 was received for construction meter deposits, customer deposits and internet fee payments.
- A total of \$608,560.17 was received from miscellaneous water related activities (other than utility bill charges).
- A total of \$152,878.00 was received from miscellaneous sewer related activities (other than utility bill charges).
- A total of \$0.00 was received from miscellaneous recycled related activities (other than utility bill charges).
- The District's general checking account (page 12 & 14 of 29) received two ACH deposits for San Bernardino Property Taxes in the amount of \$936,399.71. The District has received \$2,647,236.37 (93.10%) of the allocated \$2,843,308.96 property taxes for FY 2016.

Fiscal Year 2016 Budget Status

[Detailed information can be found on pages 20 to 29 of 29]

The revenue and expense budget status for the 2016 Fiscal Year is provided for your review.

**Summary of Revenue Budget
As of April 30, 2016 (79% of Budget Cycle)**

<u>Division</u>	<u>Budget Amount</u>	<u>Current Month</u>	<u>Year-To-Date</u>	<u>Percentage</u>
Water	13,412,500	1,573,903	9,252,428	68.98%
Sewer	11,820,000	943,139	8,886,449	75.18%
Recycled Water	537,250	25,865	311,219	57.93%
District Revenue	25,769,750	2,542,907	18,450,096	71.60%

**Summary of Water Budget
As of April 30, 2016 (79% of Budget Cycle)**

<u>Department</u>	<u>Budget Amount</u>	<u>Current Month</u>	<u>Year-To-Date</u>	<u>Percentage</u>
Water Resources	5,050,200	399,197	3,580,578	70.90%
Public works	2,385,800	243,767	1,811,327	75.92%
Administration	3,682,486	296,664	3,260,172	88.53%
Long Term Debt	2,294,014	0	2,294,014	100.00%
Asset Acquisition	0	0	36,249	0.00%
TOTAL	13,412,500	939,628	10,982,340	81.88%

**Summary of Sewer Budget
As of April 30, 2016 (79% of Budget Cycle)**

<u>Department</u>	<u>Budget Amount</u>	<u>Current Month</u>	<u>Year-To-Date</u>	<u>Percentage</u>
Treatment	3,789,816	261,007	2,740,613	72.32%
Administration	3,151,840	255,178	2,584,687	82.01%
Environmental Control	982,300	83,113	838,023	85.31%
Long Term Debt	3,896,044	0	3,831,725	98.35%
Asset Acquisition-Palmer	0	0	75,471	0.00%
TOTAL	11,820,000	599,298	10,070,519	85.20%

**Summary of Recycled Water Budget
As of April 30, 2016 (79% of Budget Cycle)**

<u>Department</u>	<u>Budget Amount</u>	<u>Current Month</u>	<u>Year-To-Date</u>	<u>Percentage</u>
Administration	537,250	45,610	614,115	114.31%
TOTAL	537,250	28,006	198,923	37.03%
District Expenses	25,769,750	1,566,932	21,251,782	82.47%

Investment Policy Disclosure

The District is currently compliant with the portfolio of its Investment Policy and State Law.

The District is using Sandy Gage with Merrill Lynch Wealth Management (Bank of America Corporation) for Treasury investments. The District expects to meet its expenditure requirements for the next six months.

Questions or Comments

If you have any questions about a particular budget account, please do not hesitate to contact the Controller directly. If you need additional information, the members of the Administrative Department would be happy to provide you with any detailed information you may desire.

Cash Fund Balance Report - April 2016

Water Division	GL#	Balance
*ID 1 Construction Funds	02-10216	\$ 293,145.85
*ID 2 Construction Funds	02-10217	\$ 80,409.31
*FCC - Debt Service YVRWFF Phase I	02-10401	\$ 38,379.54
*FCC - Future YVRWFF Phase II & III	02-10403	\$ 349,628.08
*FCC - Recycled System	02-10410	\$ (973,573.82)
*FCC - Booster Pumping Plants	02-10411	\$ 572,655.37
*FCC - Pipeline Facilities	02-10412	\$ (245,013.38)
*FCC - Water Storage Reservoirs	02-10413	\$ 1,997,103.61
Depreciation Reserves	02-10310	\$ 1,062,172.82
Infrastructure Reserves	02-10311	\$ 2,752,103.00
Sustainability Fund	02-10313	\$ 811,153.56
Rate Stabilization Fund	02-10314	\$ 500,209.14
Imported Water Fund - MUNI	02-10315	\$ (343,885.59)
Imported Water Fund - SGPWA	02-10316	\$ 822,795.12
Operating Funds:		\$ 1,408,872.89
Total Water Division		\$ 9,126,155.50

Sewer Division	GL#	Balance
*SRF Reserve Fund - Brineline	03-10218	\$ 637,449.00
*SRF Reserve Fund - WISE	03-10219	\$ 184,928.00
*SRF Reserve Fund - R 10.3	03-10220	\$ 51,531.00
*SRF Reserve Fund - Crow St	03-10221	\$ 19,255.00
*FCC - Debt Service WWTP Expansion & Upgrade	03-10405	\$ 1,284,695.24
*FCC - Future WWTP Expansion	03-10407	\$ 1,087,566.91
*FCC - Sewer Interceptors	03-10415	\$ (962,063.62)
*FCC - Lift Stations	03-10416	\$ 268,136.10
*FCC - Effluent Disposal Facilities	03-10417	\$ (1,709,991.54)
*FCC - Salt Mitigation Facilities	03-10418	\$ (5,562,020.70)
Project Fund - Encumbered	03-10215	\$ 219,000.00
Depreciation Reserves	03-10310	\$ 3,059,919.31
Infrastructure Reserves	03-10311	\$ 3,852,960.00
Rate Stabilization Fund	03-10314	\$ 1,464,394.90
Operating Funds:		\$ 4,046,227.13
Total Wastewater Division		\$ 7,941,986.73

Recycled Water Division	GL#	Balance
*FCC - Recycled System	04-10410	\$ 44,297.10
*FCC - Booster Pumping Plants	04-10411	\$ 47,330.54
*FCC - Pipeline Facilities	04-10412	\$ 141,510.43
*FCC - Water Storage Reservoirs	04-10413	\$ 139,629.25
Project Fund - Encumbered	04-10215	\$ 200,000.00
Depreciation Reserves	04-10310	\$ 51,734.84
Infrastructure Reserves	04-10311	\$ 248,754.00
Operating Funds:		\$ 1,729,554.95
Total Recycled Water Division		\$ 2,602,811.11

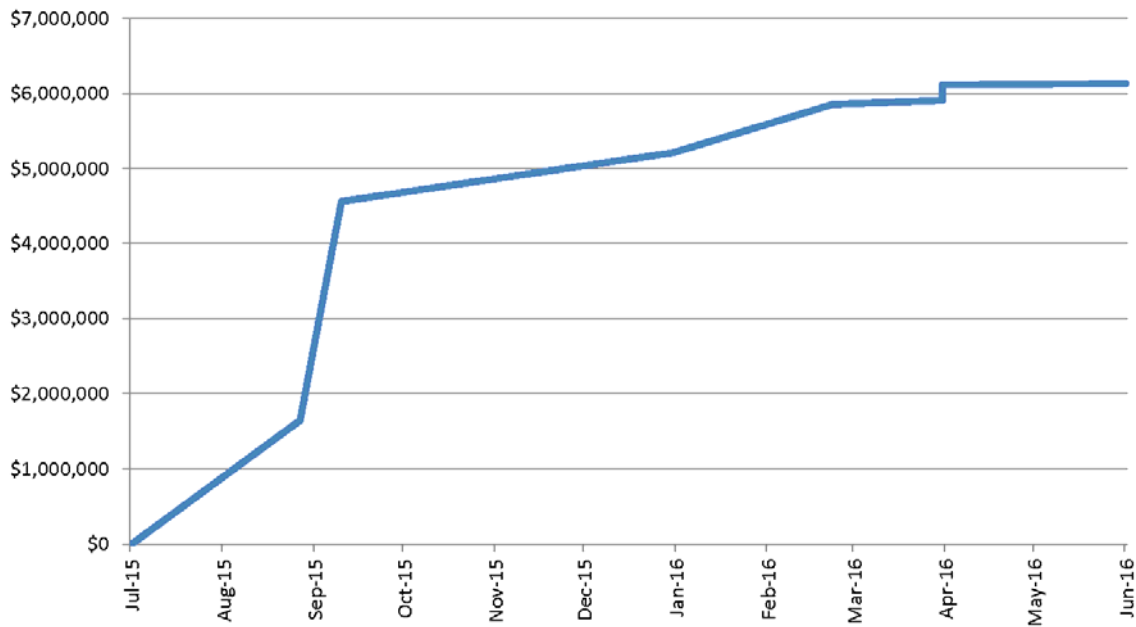
DISTRICT TOTAL \$ 19,670,953.34

*=Restricted Funds

Cash Fund Balance Report - April 2016

Pending Financial Obligations for Fiscal Year 2015/16				
Due Date	Fund	Description	Term of Obligation	Amount
08/27/2015	Water	2015A Bond Payment - YVRWFF	2015-2034	\$ 1,646,177.19
09/10/2015	Sewer	SRF Payment - WRWRF	2009-2028	\$ 2,923,688.75
12/31/2015	Sewer	SRF Payment - Yucaipa Regional Brineline	2013-2032	\$ 649,273.50
02/23/2016	Water	2015A Bond Payment - YVRWFF	2015-2034	\$ 640,556.25
03/31/2016	Sewer	SRF Payment - Recycled Reservoir R-10.3	2014-2033	\$ 54,277.31
03/31/2016	Sewer	SRF Payment - Desalinization at WRWRF	2014-2033	\$ 185,251.30
03/31/2016	Sewer	SRF Payment - Crow Street/Recycled Booster B-12.1	2016-2035	\$ 19,254.37
06/01/2016	Sewer	SBVMWD - Inland Empire Brineline Payment	2013-2016	\$ 20,000.00
Total				\$ 6,138,478.67

Payment Schedule and Cash Flow Requirements for Fiscal Year 2015-2016



Check Register - April 2016

<u>Check Date</u>	<u>Check Number</u>	<u>Name</u>	<u>Check Amount</u>
04/01/2016	25747	CalPERS - HEALTH	10,183.86
04/01/2016	25748	PAYROLL CHECK	2,024.22
04/01/2016	25749	Jason Gokei	582.00
04/01/2016	25750	CA-PERS Supplemental Income 45	17,752.73
04/01/2016	25751	WageWorks, Inc.	1,462.27
04/01/2016	25752	Public Employees' Retirement S	22,940.22
04/01/2016	25753	Hong Nelson	125.00
04/01/2016	25754	IBEW Local 1436	252.00
04/01/2016	25755	Franchise Tax Board	325.31
04/01/2016	25756	California State Disbursement	115.38
04/01/2016	25757	California State Disbursement	476.30
04/01/2016	25758	Department of the Treasury - I	125.00
04/04/2016	25759	MCCUE, MAISIE	7.31
04/04/2016	25760	MONTEJO, EUSEBIO	22.18
04/04/2016	25761	State Water Resources Control	340.00
04/04/2016	25762	Pacific Hydrotech Corporation	24,230.50
04/04/2016	25763	Courtland R. Gear	71.00
04/04/2016	25764	Aaron Blöse	71.00
04/04/2016	25765	Laura Valdivieso	135.00
04/04/2016	25766	Ameripride Uniform Services	665.09
04/04/2016	25767	Randall L. and Leann L. Miller	505.00
04/04/2016	25768	Fedex	32.84
04/04/2016	25769	Raiset R. Santana and Adriana	63.50
04/04/2016	25770	Konica Minolta Business Soluti	2,009.84
04/04/2016	25771	Krieger & Stewart	42,999.12
04/04/2016	25772	Maintenance Connection Inc	6,199.29
04/04/2016	25773	NetComp Technologies, Inc.	2,950.00
04/04/2016	25774	Praxair Inc.	25.28
04/04/2016	25775	Pro-Pipe & Supply, Inc.	80.90
04/04/2016	25776	SCCI, Inc.	350.00
04/04/2016	25777	Association of San Bernardino	132.00
04/04/2016	25778	The Gas Company	302.67
04/04/2016	25779	Yucaipa Valley Chamber Of Comm	105.00
04/04/2016	25780	All American Sewer Tools	177.43
04/04/2016	25781	Auto Care Clinic	153.66
04/04/2016	25782	Edward S Babcock & Sons, Inc.	1,185.00
04/04/2016	25783	Bob Walker	1,188.00
04/04/2016	25784	Brenntag Pacific, Inc	8,841.65
04/04/2016	25785	Calolympic Glove & Safety Co.,	405.40
04/04/2016	25786	Victor James Valenti	3,271.60
04/04/2016	25787	Fastenal Company	304.97
04/04/2016	25788	Gallade Chemical	1,200.96
04/04/2016	25789	VOID CHECK	0.00
04/04/2016	25790	Alan L. Grubel Automotive Inc.	474.74
04/04/2016	25791	Hach Company	537.81
04/04/2016	25792	Inland Water Works Supply Co.	2,078.40
04/04/2016	25793	Innerline Engineering	3,500.00
04/04/2016	25794	Johnson Machinery Co.	2,127.92
04/04/2016	25795	Kevin E. French	15,000.00
04/04/2016	25796	Harold J. Cossette	8,613.00
04/04/2016	25797	Max Machinery, Inc.	1,022.62
04/04/2016	25798	Nuckles Oil Company, Inc.	3,643.44
04/04/2016	25799	Nagem, Inc.	770.97
04/04/2016	25800	Nalco Company	7,763.82
04/04/2016	25801	NCL Of Wisconsin Inc	152.62
04/04/2016	25802	Office Solutions Business Prod	451.75
04/04/2016	25803	Paxxo, Inc.	2,599.37
04/04/2016	25804	Redlands Ford	1,890.66
04/04/2016	25805	Riverside Winnelson Company	225.50
04/04/2016	25806	Sinclair Rock and Sand Inc.	1,500.00
04/04/2016	25807	Steven Enterprises, Inc	71.55
04/04/2016	25808	Utility Services Associates LL	12,891.00

Check Register - April 2016

<u>Check Date</u>	<u>Check Number</u>	<u>Name</u>	<u>Check Amount</u>
04/04/2016	25809	Yucaipa/Calimesa Fence Constru	1,980.00
04/04/2016	25810	Boot Barn #4	394.84
04/04/2016	25811	Gregory N. Godwin	194.19
04/04/2016	25812	Standard Insurance Company	2,720.28
04/04/2016	25813	Charlie Bailey	542.83
04/04/2016	25814	Anthem Blue Cross L and H	379.90
04/04/2016	25815	Standard Insurance Company	3,210.13
04/04/2016	25816	Standard Insurance Vision Plan	672.56
04/04/2016	25817	MetLife Small Business Center	502.33
04/04/2016	25818	CalPERS - HEALTH	565.53
04/04/2016	25819	Grainger	3,716.37
04/11/2016	25820	State Water Resources Control	230.00
04/11/2016	25821	CWEA-TCP (OAKPORT ST.)	81.00
04/11/2016	25822	ADS, LLC	3,951.00
04/11/2016	25823	Ralph C. Casas	72.50
04/11/2016	25824	Ameripride Uniform Services	515.37
04/11/2016	25825	AT&T Mobility	1,599.33
04/11/2016	25826	Best Home Center	6.13
04/11/2016	25827	Corelogic, Inc.	330.00
04/11/2016	25828	Crown Ace Hardware - Yucaipa	844.01
04/11/2016	25829	VOID CHECK	0.00
04/11/2016	25830	First American Data Tree, LLC	50.00
04/11/2016	25831	Hemet Manufacturing Co., Inc.	253.25
04/11/2016	25832	Alan L. Grubel Automotive Inc.	15.00
04/11/2016	25833	House Of Quality, Parts Plus	1,980.34
04/11/2016	25834	InfoSend, Inc.	5,140.19
04/11/2016	25835	Kelly Services, Inc.	1,069.20
04/11/2016	25836	Krieger & Stewart	13,601.06
04/11/2016	25837	Peterson Land & Development	5,050.00
04/11/2016	25838	Peterson Land & Development	5,550.00
04/11/2016	25839	San Gorgonio Pass Water Agency	8,034.00
04/11/2016	25840	Separation Processes, Inc.	668.00
04/11/2016	25841	State Water Resources Control	6,292.89
04/11/2016	25842	The Gas Company	179.61
04/11/2016	25843	Underground Service Alert Of S	213.00
04/11/2016	25844	Yucaipa Lawnmower Shop	34.00
04/11/2016	25845	News Mirror Publishing, Inc.	898.00
04/11/2016	25846	Fastenal Company	266.73
04/11/2016	25847	Fisher Scientific Co.	168.50
04/11/2016	25848	Fresno Oxygen	258.81
04/11/2016	25849	G&G Environmental Compliance, I	3,433.88
04/11/2016	25850	Hach Company	1,117.01
04/11/2016	25851	Hasa, Inc.	7,775.58
04/11/2016	25852	Industrial Safety Supply Corp	127.09
04/11/2016	25853	Inland Water Works Supply Co.	10,979.72
04/11/2016	25854	JCS Welding, Inc.	600.00
04/11/2016	25855	McCrometer, Inc.	4,149.03
04/11/2016	25856	Nuckles Oil Company, Inc.	2,880.60
04/11/2016	25857	Nagem, Inc.	663.57
04/11/2016	25858	NCL Of Wisconsin Inc	619.93
04/11/2016	25859	Office Solutions Business Prod	326.93
04/11/2016	25860	Pall Corporation	22,318.22
04/11/2016	25861	Pres-Tech Manufacturer's Repre	405.00
04/11/2016	25862	Q Versa, LLC	14,317.48
04/11/2016	25863	RDO Equipment Co.	728.52
04/11/2016	25864	Safeguard Business Systems Inc	1,188.81
04/11/2016	25865	Smart & Final Stores, LLC	94.24
04/11/2016	25866	HD Supply Facilities Maintenan	762.87
04/15/2016	25867	PAYROLL CHECK	2,024.22
04/15/2016	25868	PAYROLL CHECK	969.70
04/15/2016	25869	CA-PERS Supplemental Income 45	19,735.67
04/15/2016	25870	WageWorks, Inc.	1,462.27

Check Register - April 2016

<u>Check Date</u>	<u>Check Number</u>	<u>Name</u>	<u>Check Amount</u>
04/15/2016	25871	Public Employees' Retirement S	23,082.54
04/15/2016	25872	Hong Nelson	125.00
04/15/2016	25873	Franchise Tax Board	325.31
04/15/2016	25874	California State Disbursement	115.38
04/15/2016	25875	California State Disbursement	476.30
04/15/2016	25876	Department of the Treasury - I	125.00
04/15/2016	25877	Boot Barn #4	200.00
04/15/2016	25878	Cypress Insurance Company	15,735.86
04/15/2016	25879	Jennifer Ares	43.64
04/18/2016	25880	Aklufi & Wysocki	5,175.00
04/18/2016	25881	Citizens Business Bank	6,500.00
04/18/2016	25882	DDB Engineering Inc.	4,208.24
04/18/2016	25883	Delta Partners, LLC	7,500.00
04/18/2016	25884	Dudek & Associates, Inc	15,332.82
04/18/2016	25885	Dustin Smith Equipment, Inc.	19,900.00
04/18/2016	25886	Fuel Equipment Services, Inc.	14,130.00
04/18/2016	25887	Krieger & Stewart	14,997.04
04/18/2016	25888	One Stop Landscape Supply Inc	23,947.50
04/18/2016	25889	Pascal & Ludwig Constructors I	123,500.00
04/18/2016	25890	Platinum Advisors, LLC	5,125.00
04/18/2016	25891	RMC Water and Environment	38,691.66
04/18/2016	25892	Sacramento Bank of Commerce	7,028.00
04/18/2016	25893	Separation Processes, Inc.	5,263.38
04/18/2016	25894	State Water Resources Control	230.00
04/18/2016	25895	Candice Mahan	100.00
04/18/2016	25896	Ameripride Uniform Services	769.16
04/18/2016	25897	Atkinson, Andelson, Loya, Ruud	2,425.14
04/18/2016	25898	Cherry Valley Feed & Pet Suppl	307.48
04/18/2016	25899	County of Riverside	1,032.00
04/18/2016	25900	Steven Eldridge	155.00
04/18/2016	25901	Fedex	23.59
04/18/2016	25902	Dustin Hochreiter	319.00
04/18/2016	25903	Kelly Services, Inc.	855.36
04/18/2016	25904	MailFinance Inc.	338.34
04/18/2016	25905	NetComp Technologies, Inc.	3,350.00
04/18/2016	25906	SB CNTY-Fire Protection Distri	1,866.00
04/18/2016	25907	The Counseling Team Internatio	420.00
04/18/2016	25908	AmeriGas Propane LP	4,139.31
04/18/2016	25909	Ampak Chemicals, Inc.	4,212.00
04/18/2016	25910	BofA Credit Card	195.64
04/18/2016	25911	Evoqua Water Technologies LLC	2,374.17
04/18/2016	25912	Hach Company	1,967.19
04/18/2016	25913	Inland Water Works Supply Co.	5,206.95
04/18/2016	25914	Nuckles Oil Company, Inc.	1,833.85
04/18/2016	25915	Nagem, Inc.	3,309.34
04/18/2016	25916	Office Solutions Business Prod	223.70
04/18/2016	25917	Pro-Pipe & Supply, Inc.	228.13
04/18/2016	25918	Red Alert Special Couriers	344.26
04/18/2016	25919	Steven Enterprises, Inc	356.29
04/18/2016	25920	Tri County Pump Company	9,981.56
04/18/2016	25921	Wilbur's	71.26
04/18/2016	25922	East Valley Water District	350.00
04/18/2016	25923	Dennis Neff	565.53
04/18/2016	25924	Gregory N. Godwin	194.19
04/18/2016	25925	Western Dental Services, Inc.	321.02
04/18/2016	25926	Charlie Bailey	542.83
04/18/2016	25927	Ron McCall	80.90
04/18/2016	25928	WageWorks, Inc.	212.75
04/18/2016	25929	CalPERS - HEALTH	118,750.15
04/25/2016	25930	State Water Resources Control	400.00
04/25/2016	25931	Ameripride Uniform Services	499.28
04/25/2016	25932	Burgeson's Heating & Air Cond.	1,485.00

Check Register - April 2016

<u>Check Date</u>	<u>Check Number</u>	<u>Name</u>	<u>Check Amount</u>
04/25/2016	25933	Cal-Mesa Steel Supply, Inc.	45.36
04/25/2016	25934	Central Communications	270.95
04/25/2016	25935	CHJ Consultants	10,047.00
04/25/2016	25936	Miriam Avalos	600.00
04/25/2016	25937	Coverall North America, Inc.	1,021.00
04/25/2016	25938	Frontier Communications	144.11
04/25/2016	25939	Incode Division-Tyler Technolo	22,059.62
04/25/2016	25940	InfoSend, Inc.	4,986.43
04/25/2016	25941	NetComp Technologies, Inc.	2,347.00
04/25/2016	25942	Peterson Land & Development	865.93
04/25/2016	25943	Safeguard Business Systems Inc	813.55
04/25/2016	25944	Skydrop Holdings, LLC	5,130.00
04/25/2016	25945	Southern CA Emergency Medicine	275.00
04/25/2016	25946	Anthony Joseph Sobral	47.14
04/25/2016	25947	Ampak Chemicals, Inc.	4,212.00
04/25/2016	25948	Brenntag Pacific, Inc	6,489.71
04/25/2016	25949	Charles P. Crowley Company, In	394.27
04/25/2016	25950	Center Electric	7,475.00
04/25/2016	25951	DC Frost Associates, Inc.	8,984.74
04/25/2016	25952	Evoqua Water Technologies LLC	561.05
04/25/2016	25953	Global Equipment Co., Inc	772.09
04/25/2016	25954	Alan L. Grubel Automotive Inc.	393.70
04/25/2016	25955	Haaker Equipment Company	466.00
04/25/2016	25956	Hasa, Inc.	3,668.01
04/25/2016	25957	Hemet Valley Tool & Supply	112.88
04/25/2016	25958	Inland Water Works Supply Co.	10,317.53
04/25/2016	25959	Innerline Engineering	5,250.00
04/25/2016	25960	Leroy's Landscape Services	580.00
04/25/2016	25961	McMaster-Carr Supply Co.	41.18
04/25/2016	25962	Nuckles Oil Company, Inc.	1,043.78
04/25/2016	25963	Nagem, Inc.	1,519.52
04/25/2016	25964	Office Solutions Business Prod	38.87
04/25/2016	25965	Pro-Pipe & Supply, Inc.	261.17
04/25/2016	25966	Riverside Winnelson Company	5,238.52
04/25/2016	25967	Steven Enterprises, Inc	450.18
04/25/2016	25968	Teledyne Isco, Inc.	219.24
04/25/2016	25969	Wilbur's	150.96
04/25/2016	25970	Ashley Hosmanek	71.00
04/25/2016	25971	Joseph H. Beltran	319.00
04/29/2016	25972	PAYROLL CHECK	2,027.71
04/29/2016	25973	Dale A. Fundak	130.00
04/29/2016	25974	Steven Eldridge	60.00
04/29/2016	25975	WageWorks, Inc.	1,462.27
04/29/2016	25976	Public Employees' Retirement S	22,973.34
04/29/2016	25977	Franchise Tax Board	242.90
04/29/2016	25978	California State Disbursement	115.38
04/29/2016	25979	California State Disbursement	476.30
04/29/2016	25980	Department of the Treasury - I	125.00
04/29/2016	25981	American Family Life Assurance	3,931.45
04/29/2016	25982	Timothy M. Mackamul	273.32
04/29/2016	25983	OSBORN, DARWIN L.	120.00
04/29/2016	25984	COTTRELL, RAYMOND	16.20
04/29/2016	25985	GONZALES, ANDREW	41.63
April 2016 Check Register Total			1,029,859.90

Financial Account Information - April 2016

DATE	DESCRIPTION	Deposit Checking	General Checking	Investment Checking	Treasuries at cost	LAIF Invest. Fund	TOTAL ACTIVITY
03/31/2016	bal forward	569,268.62	30,000.00	24,782.97	501,504.86	16,813,426.79	17,938,983.24
3/31	rev retained in MM				(2,019.54)		(2,019.54)
04/01/2016	Deposit	15,685.14					15,685.14
	Credit Card-3/31	172.95					172.95
	Credit Card-4/1	2,802.11					2,802.11
	Electronic	16,445.39					16,445.39
	Website-4/1	4,428.35					4,428.35
	Website-4/2	58.13					58.13
	Website-4/2	4,303.35					4,303.35
	Website-4/3	241.13					241.13
	Website-4/3	1,880.41					1,880.41
	Website-4/4	200.48					200.48
	Website-4/4	245.28					245.28
04/01/2016	Federal Taxes		(48,021.88)				(48,021.88)
04/02/2016	State Taxes		(7,746.51)				(7,746.51)
04/03/2016	PR Direct Deposit		(111,101.94)				(111,101.94)
04/04/2016	VOYA		(7,383.79)				(7,383.79)
	Ck#25747-25758		(56,364.29)				(56,364.29)
	TRF#1415-AP & PR	(230,618.41)	230,618.41				0.00
04/04/2016	Deposit	48,591.96					48,591.96
	Deposit - Singletom Road LLC	228,242.00					228,242.00
	Credit Card-4/1	301.25					301.25
	Credit Card-4/4	3,609.70					3,609.70
	Electronic	15,350.71					15,350.71
	Website-4/4	4,210.68					4,210.68
	Website-4/5	268.69					268.69
	Website-4/5	442.13					442.13
	ETS Fees	(1,568.09)					(1,568.09)
	ETS Fees	(1,174.28)					(1,174.28)
	ACH pmts	57,144.27					57,144.27
04/05/2016	Deposit	43,975.24					43,975.24
	Credit Card-4/4	440.19					440.19
	Credit Card-4/5	3,169.44					3,169.44
	Electronic	30,071.18					30,071.18
	Website-4/5	2,985.43					2,985.43
	Website-4/6	271.18					271.18
	Website-4/6	361.96					361.96
04/06/2016	Deposit	29,971.55					29,971.55
	Credit Card-4/5	1,061.22					1,061.22
	Credit Card-4/6	5,087.54					5,087.54
	Electronic	17,870.11					17,870.11
	Website-4/6	3,539.69					3,539.69
	Website-4/7	219.96					219.96
	Website-4/7	516.15					516.15
	Void Ck#25342, 2/8/16		135.00				135.00
	Ck#25759-25819		(178,220.32)				(178,220.32)
	TRF#1416 - AP	(178,085.32)	178,085.32				0.00
04/07/2016	Deposit	32,444.21					32,444.21
	Deposit - Vantageone RE	16,336.00					16,336.00
	Credit Card-4/6	1,042.19					1,042.19
	Credit Card-4/7	2,270.20					2,270.20
	Electronic	11,289.56					11,289.56
	Website-4/7	2,875.30					2,875.30
	Website-4/8	151.71					151.71
	Website-4/8	625.51					625.51

Financial Account Information - April 2016

DATE	DESCRIPTION	Deposit Checking	General Checking	Investment Checking	Treasuries at cost	LAIF Invest. Fund	TOTAL ACTIVITY
03/31/2016	bal forward	569,268.62	30,000.00	24,782.97	501,504.86	16,813,426.79	17,938,983.24
04/08/2016	Deposit	32,416.01					32,416.01
	Deposit - M/C	3,522.26					3,522.26
	Deposit - M/C	10,044.87					10,044.87
	Credit Card-4/7	483.10					483.10
	Credit Card-4/8	2,490.38					2,490.38
	Electronic	12,954.95					12,954.95
	Website - 4/8	2,532.21					2,532.21
	Website - 4/9	215.51					215.51
	Website - 4/9	3,000.38					3,000.38
	Website-4/10	2,293.08					2,293.08
	Website-4/10	162.62					162.62
	Website-4/11	3,041.08					3,041.08
04/11/2016	Deposit	114,275.74					114,275.74
	Credit Card-4/8	699.52					699.52
	Credit Card-4/11	5,759.62					5,759.62
	Electronic	16,724.95					16,724.95
	Website-4/11	3,637.21					3,637.21
	Website-4/12	144.38					144.38
	Website-4/12	451.97					451.97
	ACH pmts	52,083.84					52,083.84
	Deposit - SBC Tax		102,030.34				102,030.34
	TRF#1417- to Dep Ck	102,030.34	(102,030.34)				0.00
04/12/2016	Deposit	12,582.80					12,582.80
	Credit Card-4/11	1,676.22					1,676.22
	Credit Card-4/12	3,328.42					3,328.42
	Electronic	33,376.96					33,376.96
	Website-4/12	2,482.25					2,482.25
	Website-4/13	157.41					157.41
	Website-4/13	1,011.33					1,011.33
04/13/2016	Deposit	68,917.73					68,917.73
	Deposit - Riv Taxes	16,741.34					16,741.34
	Credit Card-4/12	470.45					470.45
	Credit Card-4/13	4,542.70					4,542.70
	Electronic	14,990.97					14,990.97
	Website-4/13	2,979.95					2,979.95
	Website-4/14	94.92					94.92
	Website-4/14	896.95					896.95
04/14/2016	Deposit	18,372.99					18,372.99
	Credit Card-4/13	674.37					674.37
	Credit Card-4/14	1,719.21					1,719.21
	Electronic	11,213.35					11,213.35
	Website-4/14	2,572.79					2,572.79
	Website-4/15	559.02					559.02
04/15/2016	Federal Taxes		(49,900.67)				(49,900.67)
04/15/2016	State Taxes		(7,872.34)				(7,872.34)
04/15/2016	PR Direct Deposit		(116,400.54)				(116,400.54)
04/15/2016	VOYA		(8,273.79)				(8,273.79)
	Ck#25820-25879		(194,261.29)				(194,261.29)
	TRF#1418-AP & PR	(376,708.63)	376,708.63				0.00

Financial Account Information - April 2016

DATE	DESCRIPTION	Deposit Checking	General Checking	Investment Checking	Treasuries at cost	LAIF Invest. Fund	TOTAL ACTIVITY
03/31/2016	bal forward	569,268.62	30,000.00	24,782.97	501,504.86	16,813,426.79	17,938,983.24
04/15/2016	Deposit	34,435.77					34,435.77
4/15-JE#5127	Deposit bank posted dep over	4.00					4.00
	Credit Card-4/14	88.12					88.12
	Credit Card-4/15	3,391.02					3,391.02
	Electronic	16,837.57					16,837.57
	Website-4/15	3,959.65					3,959.65
	Website-4/16	64.93					64.93
	Website-4/16	2,194.15					2,194.15
	Website-4/17	226.59					226.59
	Website-4/17	2,411.66					2,411.66
	Website-4/18	123.82					123.82
	Website-4/18	372.39					372.39
	ACH pmts	63,719.85					63,719.85
	ACH pmts	64.93					64.93
	LAIF Quarterly Interest					19,823.98	19,823.98
04/18/2016	Deposit	61,688.63					61,688.63
	Credit Card-4/15	235.00					235.00
	Credit Card-4/18	2,736.54					2,736.54
	Electronic	14,889.15					14,889.15
	Website-4/18	3,045.63					3,045.63
	Website-4/19	32.65					32.65
	Website-4/19	1,239.59					1,239.59
4/15	Qtrly Analysis Fee			(12,554.93)			(12,554.93)
04/19/2016	Deposit	10,765.54					10,765.54
	Dep Corr-ck missing	(42.43)					(42.43)
	Credit Card-4/18	446.05					446.05
	Credit Card-4/19	3,329.16					3,329.16
	Electronic	19,819.57					19,819.57
	Website-4/19	3,149.86					3,149.86
	Website-4/20	271.20					271.20
	Website-4/20	683.35					683.35
	Ck#25880-25929		(458,950.73)				(458,950.73)
	TRF#1419-AP	(458,950.73)	458,950.73				0.00
04/20/2016	Deposit	46,680.37					46,680.37
	Credit Card-4/19	1,618.52					1,618.52
	Credit Card-4/20	10,391.98					10,391.98
	Electronic	12,796.02					12,796.02
	Website-4/20	3,774.57					3,774.57
	Website-4/21	344.98					344.98
	Website-4/21	73.47					73.47
	ACH pmts	39,824.37					39,824.37
04/21/2016	Deposit	20,626.41					20,626.41
	Credit Card-4/20	2,264.18					2,264.18
	Credit Card-4/21	2,295.02					2,295.02
	Electronic	7,916.30					7,916.30
	Website-4/21	2,573.77					2,573.77
	Website-4/22	412.84					412.84

Financial Account Information - April 2016

DATE	DESCRIPTION	Deposit Checking	General Checking	Investment Checking	Treasuries at cost	LAIF Invest. Fund	TOTAL ACTIVITY
03/31/2016	bal forward	569,268.62	30,000.00	24,782.97	501,504.86	16,813,426.79	17,938,983.24
04/22/2016	Deposit	27,115.27					27,115.27
	Depoist-MC	21,268.00					21,268.00
	Depoist-MC	5,028.32					5,028.32
	Credit Card-4/21	353.34					353.34
	Credit Card-4/22	1,385.86					1,385.86
	Electronic	15,592.32					15,592.32
	Website-4/22	2,515.42					2,515.42
	Website-4/23	148.89					148.89
	Website-4/23	1,845.00					1,845.00
	Website-4/24	2,410.14					2,410.14
	Website-4/25	745.49					745.49
04/25/2016	Deposit	72,051.70					72,051.70
	Credit Card-4/22	165.26					165.26
	Credit Card-4/25	3,893.05					3,893.05
	Electronic	14,063.56					14,063.56
	Website-4/25	3,979.65					3,979.65
	Website-4/26	55.01					55.01
	Website-4/26	385.16					385.16
	ACH pmts	61,732.51					61,732.51
	ACH pmts	572.82					572.82
	Deposit - SBC Tax		834,369.37				834,369.37
	TRF#1420- to Dep Ck	834,369.37	(834,369.37)				0.00
04/26/2016	Deposit	17,700.53					17,700.53
	Credit Card-4/25	1,129.24					1,129.24
	Credit Card-4/26	2,141.17					2,141.17
	Electronic	18,410.82					18,410.82
	Website-4/26	1,798.14					1,798.14
	Website-4/27	126.31					126.31
	Website-4/27	393.13					393.13
04/27/2016	Deposit	39,611.32					39,611.32
	Deposit -M/C	17,522.51					17,522.51
	Credit Card-4/26	783.12					783.12
	Credit Card-4/27	5,570.99					5,570.99
	Electronic	9,108.41					9,108.41
	Website-4/27	2,968.71					2,968.71
	Website-4/28	42.43					42.43
	Website-4/28	429.73					429.73
04/29/2016	Federal Taxes		(49,860.91)				(49,860.91)
04/29/2016	State Taxes		(8,258.41)				(8,258.41)
04/29/2016	PR Direct Deposit		(117,325.66)				(117,325.66)
04/29/2016	CalPERS 457 DC & Loans		(14,634.00)				(14,634.00)
04/29/2016	VOYA		(5,815.70)				(5,815.70)
	Ck#25930-25985		(142,063.27)				(142,063.27)
	Void Ck#23817, 7/13/15		41.63				41.63
	TRF#1421-AP & PR	(337,916.32)	337,916.32				0.00
04/28/2016	Deposit	18,657.93					18,657.93
	Deposit -Wm Lyons	459,592.00					459,592.00
	Credit Card-4/27	2,005.07					2,005.07
	Credit Card-4/28	2,443.68					2,443.68
	Electronic	8,867.55					8,867.55
	Website-4/28	4,858.81					4,858.81
	Website-4/29	962.46					962.46

Financial Account Information - April 2016

DATE	DESCRIPTION	Deposit Checking	General Checking	Investment Checking	Treasuries at cost	LAIF Invest. Fund	TOTAL ACTIVITY
03/31/2016	bal forward	569,268.62	30,000.00	24,782.97	501,504.86	16,813,426.79	17,938,983.24
04/29/2016	Deposit	23,428.39					23,428.39
	Credit Card-4/28	145.27					145.27
	Credit Card-4/29	1,760.75					1,760.75
	Electronic	10,027.29					10,027.29
	Website-4/29	3,138.37					3,138.37
	Website-4/30	3,401.96					3,401.96
	Website-5/1	2,949.24					2,949.24
	Website-5/2	521.66					521.66
	April '16 NSF's	(1,752.84)					(1,752.84)
4/30	retained in MM				2,019.56		2,019.56
TOTALS		2,293,969.65	30,000.00	12,228.04	501,504.88	16,833,250.77	19,670,953.34

Investment Summary - April 2016

U.S. TREASURIES						
Quantity	Description	Cusip	Maturity Date	Yield	Cost of Purchase	Market Value
500,000	US Treasury Bill	912796HT9	June 2, 2016	0.020%	499,485.32	499,935.00
500,000	Total Values				499,485.32	499,935.00

Money Market Account Activity-Beginning Balance	2,019.54
4/29/16 - Dividend/Interest	0.02
Income	0.02
Intra-Bank Transfers to/from Investment Checking	0.00
Fund Transfers	0.00
Cusip Maturity	0.00
Redemptions	0.00
Cusip Purchase	0.00
Purchases	0.00
 Ending Balance - Money Market	 2,019.56
 US Treasury Securities Investment Principal	 499,485.32
 Total Assets	 501,504.88

Investment Summary - April 2016

LOCAL AGENCY INVESTMENT FUND				
PERIOD	TOTAL WITHDRAWAL AMOUNT	TOTAL DEPOSIT AMOUNT	ACCRUED INTEREST (QUARTERLY)	ENDING BALANCE
July 31, 2015	(\$525,000.00)	\$0.00	\$12,375.46	\$19,103,970.94
August 31, 2015	(\$3,000,000.00)	\$0.00	\$0.00	\$16,103,970.94
September 30, 2015	\$0.00	\$0.00	\$0.00	\$16,103,970.94
October 31, 2015	\$0.00	\$0.00	\$14,537.81	\$16,118,508.75
November 30, 2015	\$0.00	\$0.00	\$0.00	\$16,118,508.75
December 31, 2015	\$0.00	\$0.00	\$0.00	\$16,118,508.75
January 31, 2016	\$0.00	\$1,180,000.00	\$14,918.04	\$17,313,426.79
February 28, 2016	\$0.00	\$0.00	\$0.00	\$17,313,426.79
March 31, 2016	(\$500,000.00)	\$0.00	\$0.00	\$16,813,426.79
April 30, 2016	\$0.00	\$0.00	\$19,823.98	\$16,833,250.77
May 31, 2016	\$0.00	\$0.00	\$0.00	\$16,833,250.77
June 30, 2016	\$0.00	\$0.00	\$0.00	\$16,833,250.77

L.A.I.F. INCOME SUMMARY

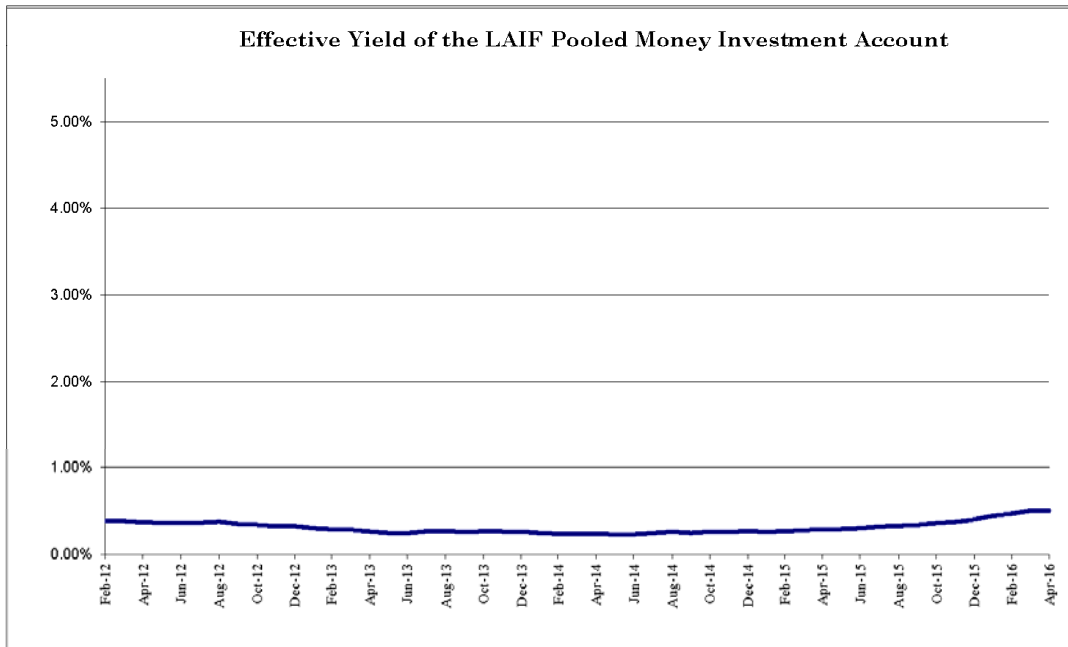
INCOME RECEIVED

CURRENT QUARTER

\$19,823.98

FY YEAR-TO-DATE

\$61,655.29



Daily Deposit Allocation - April 2016

DATE	Description	Qty	CHECKING DEPOSITS	AR Mail & Counter	AR Payment Centers	AR Credit Card	AR Electronic Rapid Pay	AR Web Site	AR ACH Auto Pay	AR TOTAL	Web Fees & Deposits	Water Allocation	Sewer Allocation	Recycled Allocation	RECAP TOTAL
04/01/2016	Mail & Counter	176	15,685.14	15,685.14						15,685.14					15,685.14
	Credit Cards	34	2,975.06			2,975.06				2,975.06					2,975.06
	Electronic	218	16,445.39				16,445.39			16,445.39					16,445.39
	Website-130 fees	132	11,357.13					11,129.63		11,129.63					11,357.13
04/04/2016	Mail & Counter	412	48,591.96	48,591.96						48,591.96					48,591.96
	Deposit - Singleton Road LLC		228,242.00							0.00			113,148.00	115,094.00	228,242.00
	Credit Cards	42	3,910.95			3,910.95				3,910.95					3,910.95
	Electronic	211	15,350.71				15,350.71			15,350.71					15,350.71
	Website	61	4,921.50					4,814.75		4,921.50	106.75				4,921.50
04/05/2016	ACH payment	511	57,144.27						57,144.27	57,144.27					57,144.27
	Mail & Counter	294	43,975.24	43,975.24						43,975.24					43,975.24
	Credit Cards	36	3,609.63			3,609.63				3,609.63					3,609.63
	Electronic	392	30,071.18				30,071.18			30,071.18					30,071.18
	Website-44 fees	45	3,618.57					3,541.57		3,618.57					3,618.57
04/06/2016	Mail & Counter	299	29,971.55	29,971.55						29,971.55					29,971.55
	Credit Cards	54	6,148.76			6,148.76				6,148.76					6,148.76
	Electronic	239	17,870.11				17,870.11			17,870.11					17,870.11
	Website-48 fees	50	4,275.80					4,191.80		4,275.80					4,275.80
04/07/2016	Mail & Counter	278	32,444.21	32,444.21						32,444.21					32,444.21
	Deposit - Vantageone RE		16,336.00							0.00		16,336.00			16,336.00
	Credit Cards	30	3,312.39			3,312.39				3,312.39					3,312.39
	Electronic	152	11,289.56				11,289.56			11,289.56					11,289.56
	Website-38 fees	39	3,652.52					3,586.02		3,652.52					3,652.52
04/08/2016	Mail & Counter	245	32,416.01	32,416.01						32,416.01					32,416.01
	Deposit corr - missing ck		(42.43)	(42.43)						(42.43)					(42.43)
	Deposit-M/C		3,522.26							3,522.26					3,522.26
	Website-M/C		10,044.87							10,044.87					10,044.87
	Credit Cards	27	2,973.48			2,973.48				2,973.48					2,973.48
	Electronic	163	12,954.95				12,954.95			12,954.95					12,954.95
	Website-98 fees	99	11,244.88					11,073.38		11,244.88					11,244.88
	SB Property Tax		-	1,071.92						1,071.92					1,071.92
04/11/2016	Mail & Counter	657	114,275.74	114,275.74						114,275.74					114,275.74
	Credit Cards	45	6,459.14			6,459.14				6,459.14					6,459.14
	Electronic	194	16,724.95				16,724.95			16,724.95					16,724.95
	Website	46	4,233.56					4,153.06		4,233.56					4,233.56
	ACH payment	579	52,083.84						52,083.84	52,083.84					52,083.84
04/12/2016	Mail & Counter	148	12,582.80	12,582.80						12,582.80					12,582.80
	Credit Cards	52	5,004.64			5,004.64				5,004.64					5,004.64
	Electronic	335	33,376.96				33,376.96			33,376.96					33,376.96
	Website-37 fees	38	3,650.99					3,586.24		3,650.99					3,650.99
04/13/2016	Mail & Counter	335	68,917.73	68,917.73						68,917.73					68,917.73
	Deposit-Riv Taxes		16,741.34							0.00		16,741.34			16,741.34
	Credit Cards	47	5,013.15			5,013.15				5,013.15					5,013.15
	Electronic	184	14,990.97				14,990.97			14,990.97					14,990.97
	Website	34	3,971.82					3,912.32		3,971.82					3,971.82
04/14/2016	Mail & Counter	237	18,372.99	18,372.99						18,372.99					18,372.99
	Credit Cards	24	2,393.58			2,393.58				2,393.58					2,393.58
	Electronic	137	11,213.35				11,213.35			11,213.35					11,213.35
	Website	35	3,131.81					3,070.56		3,131.81					3,131.81
04/15/2016	Mail & Counter	227	34,435.77	34,435.77						34,435.77					34,435.77
	Credit Cards	29	3,479.14			3,479.14				3,479.14					3,479.14
	Electronic	230	16,837.57				16,837.57			16,837.57					16,837.57
	Website	108	9,353.19					9,164.19		9,353.19					9,353.19
	ACH payment	652	63,784.78						63,784.78	63,784.78					63,784.78

Daily Deposit Allocation - April 2016

DATE	Description	Qty	DEPOSIT CHECKING DEPOSITS	AR Mail & Counter	AR Payment Centers	AR Credit Card	AR Electronic Rapid Pay	AR Web Site	AR ACH Auto Pay	AR TOTAL	Web Fees & Deposits	Water Allocation	Sewer Allocation	Recycled Allocation	RECAP TOTAL
04/18/2016	Mail & Counter	514	61,688.63	61,688.63						61,688.63					61,688.63
	Credit Cards	35	2,971.54			2,971.54				2,971.54					2,971.54
	Electronic	206	14,889.15				14,889.15			14,889.15					14,889.15
	Website-41 fees	43	4,317.87					4,246.12		4,246.12					4,317.87
04/19/2016	Mail & Counter	97	10,765.54	10,765.54						10,765.54					10,765.54
	Credit Cards	37	3,775.21			3,775.21				3,775.21					3,775.21
	Electronic	255	19,819.57				19,819.57			19,819.57					19,819.57
	Website-46 fees	50	4,104.41					4,023.91		4,023.91					4,104.41
04/20/2016	Mail & Counter	317	46,680.37	46,680.37						46,680.37					46,680.37
	Credit Cards	88	12,010.50			12,010.50				12,010.50					12,010.50
	Electronic	171	12,796.02				12,796.02			12,796.02					12,796.02
	Website	36	4,193.02					4,130.02		4,130.02					4,193.02
	ACH payment	524	38,824.37						38,824.37	38,824.37					39,824.37
04/21/2016	Mail & Counter	216	20,626.41	20,626.41						20,626.41					20,626.41
	Credit Cards	35	4,559.20			4,559.20				4,559.20					4,559.20
	Electronic	113	7,916.30				7,916.30			7,916.30					7,916.30
	Website	33	2,986.61					2,928.86		2,928.86					2,986.61
04/22/2016	Mail & Counter	183	27,115.27	27,115.27						27,115.27					27,115.27
	Deposit-MC		21,268.00							0.00			21,268.00		21,268.00
	Deposit-MC		5,028.32							0.00		4,848.32	180.00		5,028.32
	Credit Cards	22	1,739.20			1,739.20				1,739.20					1,739.20
	Electronic	206	15,592.32				15,592.32			15,592.32					15,592.32
	Website	93	7,684.94					7,502.19		7,502.19					7,684.94
04/25/2016	Mail & Counter	471	72,051.70	72,051.70						72,051.70					72,051.70
	Credit Cards	42	4,058.31			4,058.31				4,058.31					4,058.31
	Electronic	178	14,063.56				14,063.56			14,063.56					14,063.56
	Website	51	4,419.82					4,330.57		4,330.57					4,419.82
	ACH payment	616	62,305.33						62,305.33	62,305.33					62,305.33
	SB Property Tax		-							0.00					0.00
04/26/2016	Mail & Counter	120	17,700.53	17,700.53						17,700.53					17,700.53
	Credit Cards	36	3,270.41			3,270.41				3,270.41					3,270.41
	Electronic	250	18,410.82				18,410.82			18,410.82					18,410.82
	Website	26	2,317.58					2,272.08		2,272.08					2,317.58
04/27/2016	Mail & Counter	311	39,611.32	39,611.32						39,611.32					39,611.32
	Deposit - IMC		17,522.51							0.00			17,522.51		17,522.51
	Credit Cards	50	6,354.11			6,354.11				6,354.11					6,354.11
	Electronic	123	9,108.41				9,108.41			9,108.41					9,108.41
	Website-33 fees	35	3,440.87					3,383.12		3,383.12					3,440.87
04/28/2016	Mail & Counter	183	18,657.93	18,657.93						18,657.93					18,657.93
	Deposit - Wm Lyons		459,592.00							0.00		459,592.00			459,592.00
	Credit Cards	28	4,448.75			4,448.75				4,448.75					4,448.75
	Electronic	111	8,867.55				8,867.55			8,867.55					8,867.55
	Website-43 fees	45	5,746.02					5,746.02		5,746.02					5,821.27
04/29/2016	Mail & Counter	173	23,428.39	23,428.39						23,428.39					23,428.39
	Credit Cards	20	1,906.02			1,906.02				1,906.02					1,906.02
	Electronic	146	10,027.29				10,027.29			10,027.29					10,027.29
	Website	109	10,011.23					9,820.48		9,820.48					10,011.23
Apr-16	Utility Pmt Cntr-260		(17,851.12)	(17,851.12)						0.00					0.00
	April 16 NSF's		(1,752.84)	(1,752.84)						0.00					0.00
SB tax-ach	\$102,030.34 (4/08)									(1,752.84)					(1,752.84)
SB tax-ach	\$834,369.37 (4/25)									0.00					0.00
TOTALS		15,010	2,373,319.10	787,207.97	17,851.12	90,373.17	328,616.69	110,606.89	275,142.59	1,609,798.43	2,082.50	608,560.17	152,878.00	0.00	2,373,319.10

TOTAL # AR PAYMENTS 5,624 260 822 4,214 1,208 2,882 15,010
 PERCENT OF TOTAL RECEIVED 37.47% 1.73% 5.48% 28.07% 8.05% 19.20% 100%

FY 2016 - Water Revenue

ACCOUNT#	DESCRIPTION	BUDGET	Qtr 1 Totals	Qtr 2 Totals	Jan '16	Feb '16	Mar '16	April '16	Year to Date	Percentage YTD
02-40010	Sales - Water	6,165,000	1,109,101	1,221,596	205,429	196,497	299,211	267,927	3,299,762	53.52%
02-40011	Sales - Construction Water	20,000	2,524	2,898	370	9	332	155	6,288	31.44%
02-40012	Sales - Imported Water (SGPWA)	250,000	55,743	42,198	7,645	7,645	11,036	10,831	135,098	54.04%
02-40013	Sales - Imported Water (MUNI)	850,000	138,543	173,669	30,695	28,948	43,568	39,119	454,543	53.48%
02-40014	Sales Disc.-Multi Units Usage Chrg.	(130,000)	(22,065)	(27,748)	(6,846)	(6,673)	(8,775)	(7,724)	(79,832)	61.41%
02-40015	Water Wholesale Revenue	70,000	13,653	13,068	101,521	0	10,345	19,605	158,191	225.99%
02-40016	Service Establishment Fee	3,000	1,475	1,025	25	425	625	850	4,425	147.50%
02-41000	Service Demand Charges	3,000,000	564,332	767,214	256,287	256,307	256,593	256,585	2,357,319	78.58%
02-41001	Fire Service Standby Fees	25,000	5,186	7,904	3,155	3,001	3,251	3,172	25,669	102.68%
02-41003	Construction Service Charge	14,000	2,433	3,712	1,090	902	1,260	998	10,396	74.26%
02-41005	Sales Disc-Multi Units Service Chrg.	(120,000)	(25,302)	(34,129)	(11,376)	(11,376)	(11,376)	(11,376)	(104,937)	87.45%
02-41010	Unauthorized Use of Water Charge	2,000	0	0	0	0	0	0	0	0.00%
02-41110	Meter/Lateral installation	35,000	21,050	14,250	0	6,375	8,625	13,500	63,800	182.29%
02-41112	Fire Flow Test Fees	3,500	900	1,200	450	225	0	300	3,075	87.86%
02-41113	Disconnect/Reconnect Fees	130,000	31,365	30,150	11,515	7,915	10,890	9,325	101,160	77.82%
02-41121	Penalty - Late Charges	150,000	32,104	31,201	10,577	8,600	5,769	8,275	96,526	64.35%
02-42123	Management & Accounting Fees	160,000	39,994	40,002	13,334	13,334	13,334	13,334	133,332	83.33%
02-41124	Bad Debt	(20,000)	0	0	0	0	0	0	0	0.00%
02-43010	Interest Earned	15,000	4,066	8,697	6,588	0	3	8,921	28,275	188.50%
02-43110	Property Tax - Unsecured	110,000	6,630	92,686	(2,060)	89	257	(4,363)	93,239	84.76%
02-43120	Property Tax - Secured	2,400,000	0	1,152,334	98,121	62,276	36,851	929,620	2,279,202	94.97%
02-43130	Tax Collection - Prior	15,000	0	4,973	3,717	553	4,336	1,920	15,498	103.32%
02-43140	Other Taxes	185,000	(17)	13,789	71,072	199	650	9,104	94,797	51.24%
02-49150	Revenue - Misc. Non-Operating	80,000	19,002	19,035	22,422	3,297	9,023	3,824	76,602	95.75%
	WATER OPERATING REVENUE	13,412,500	2,000,718	3,579,721	823,732	578,548	695,806	1,573,903	9,252,428	68.98%
	Grants	0	0	41,089	0	0	0	0	41,089	
02-89901	Facility Capacity Charges	0	657,307	653,843	0	229,126	296,516	346,826	2,183,618	
02-89902	Sustainability	0	75,517	104,435	881	14,970	46,304	47,894	290,001	
	TOTAL WATER REVENUE	13,412,500	2,733,543	4,379,088	824,613	822,644	1,038,626	1,968,623	11,767,136	

FY 2016 - Sewer Revenue

ACCOUNT#	DESCRIPTION	BUDGET	Qtr 1 Totals	Qtr 2 Totals	Jan '16	Feb '16	Mar '16	April '16	Year to Date	Percentage YTD
03-40016	Sales - Establish Service Fee	500	0	0	25	0	0	50	75	15.00%
03-41000	Sales - Sewer Charges	11,675,000	2,170,394	2,843,289	938,575	932,687	945,907	942,489	8,773,340	75.15%
03-41005	Sales Disc-Multi Units Service Chrg.	(200,000)	(42,030)	(54,733)	(18,239)	(18,221)	(18,253)	(18,245)	(169,720)	84.86%
03-41110	Meter/Lateral Installation	1,000	0	0	950	0	0	0	950	95.00%
03-41121	Penalty - Late Charges	150,000	30,703	31,228	11,102	12,389	8,345	9,744	103,492	68.99%
03-41124	Bad Debt	(20,000)	0	0	0	0	0	0	0	0.00%
03-42122	Revenue - Other Operating	2,000	465	180	360	180	180	180	1,545	77.25%
03-43010	Interest Earned	15,000	4,062	8,696	6,713	0	0	8,921	28,392	189.28%
03-43110	Property Tax - Unsecured	10,000	0	10,000	0	0	0	0	10,000	100.00%
03-43120	Property Tax - Secured	125,000	0	125,000	0	0	0	0	125,000	100.00%
03-43130	Tax Collection - Prior	10,000	0	10,000	0	0	0	0	10,000	100.00%
03-43140	Other Taxes	1,500	0	1,500	0	0	0	0	1,500	100.00%
03-49150	Misc. Non-Oper Revenue	50,000	1,875	0	0	0	0	0	1,875	3.75%
	SEWER OPERATING REVENUE	11,820,000	2,165,469	2,975,160	939,487	927,015	936,178	943,139	8,886,449	75.18%
	Grants	0	0	0	0	0	0	0	0	
03-89901	Facility Capacity Charges	0	480,333	482,441	3,979	139,757	176,620	317,068	1,600,198	
03-89903	Contrib Capital-Front Footage Fees	0	0	0	12,841	0	0	0	12,841	
03-89905	Contrib Capital-Infrastructure	0	0	34,500	0	0	30,000	0	64,500	
	TOTAL SEWER REVENUE	11,820,000	2,645,802	3,492,101	956,307	1,066,772	1,142,798	1,260,207	10,563,988	

FY 2016 - Recycled Revenue

ACCOUNT#	DESCRIPTION	BUDGET	Qtr 1 Totals	Qtr 2 Totals	Jan '16	Feb '16	Mar '16	April '16	Year to Date	Percentage YTD
04-40010	Sales - Recycled Water	450,000	108,101	92,169	4,477	5,545	20,295	19,232	249,819	55.52%
04-40011	Sales - Construction Water	10,000	1,270	1,660	373	26	395	139	3,861	38.61%
04-41000	Sales - Service Demand Chrg.	42,500	7,403	9,557	3,231	3,249	3,496	3,630	30,565	71.92%
04-41003	Const. Water Minimum Chrg.	5,000	428	656	214	193	221	214	1,925	38.50%
04-41110	Meter/Lateral installation	1,500	0	325	0	0	750	650	1,725	115.00%
04-41121	Penalty - Late Charges	500	254	91	8	13	6	19	390	77.97%
04-41122	Revenue - Other Operating	250	0	0	0	0	0	0	0	0.00%
04-43010	Interest Earned	8,000	0	1,460	1,492	0	0	1,982	4,934	61.68%
04-43110	Property Tax - Unsecured	1,000	0	1,000	0	0	0	0	1,000	100.00%
04-43120	Property Tax - Secured	15,000	0	15,000	0	0	0	0	15,000	100.00%
04-43130	Property Tax - Prior	1,000	0	1,000	0	0	0	0	1,000	100.00%
04-43140	Property Tax - Other	1,000	0	1,000	0	0	0	0	1,000	100.00%
04-49150	Misc. Non-Operating Revenue	1,500	0	0	0	0	0	0	0	0.00%
	RECYCLED OPERATING REVENUE	537,250	117,454	123,917	9,794	9,026	25,163	25,865	311,219	57.93%
	Grants	0	0	0					0	
04-89901	Facility Capacity Charges	0	5,800	16,434	9,667	0	54,135	0	86,036	
	TOTAL RECYCLED REVENUE	537,250	123,254	140,351	19,461	9,026	79,298	25,865	397,255	

FY 2016 - Water Expenses

ACCOUNT#	DESCRIPTION	BUDGET	Qtr 1 Totals	Qtr 2 Totals	Jan '16	Feb '16	Mar '16	April '16	Year to Date	Percentage YTD
02-5-01-50010	Labor-Water Resources	884,000	172,040	220,087	63,221	61,226	60,815	91,183	668,572	75.63%
02-5-01-50011	Labor Credit	0	0	0	0	0	0	0	0	
02-5-01-50013	Benefits-Fica	63,000	14,123	17,906	5,234	5,080	5,030	7,436	54,808	87.00%
02-5-01-50014	Benefits-Life Insurance	3,200	845	841	297	287	287	287	2,843	88.84%
02-5-01-50016	Benefits-HealthDefrd Comp	145,000	43,006	44,264	14,533	14,533	14,533	15,237	146,105	100.76%
02-5-01-50017	Benefits-Disability Insurance	11,000	2,521	2,789	899	880	874	1,152	9,115	82.86%
02-5-01-50019	Benefits-Workers Compensation	42,000	7,989	8,950	4,013	9,659	0	4,013	34,624	82.44%
02-5-01-50021	Benefits-PERS	47,000	10,205	13,447	3,831	3,831	3,784	5,624	40,723	86.64%
02-5-01-50022	Benefits-PERS-Employer	100,000	10,954	14,317	4,091	4,091	4,042	5,991	43,486	43.49%
02-5-01-50023	Benefits-Uniforms	3,500	765	2,343	231	215	514	212	4,280	122.29%
02-5-01-50024	Benefits-Vacation & Sick Pay	7,500	1,577	1,945	821	821	595	892	6,650	88.67%
02-5-01-50025	Benefits-Boot Allowance	2,000	594	200	0	194	195	394	1,577	78.87%
02-5-01-51003	R&M - Structures	275,000	26,103	76,854	7,357	3,271	47,235	26,926	187,747	68.27%
02-5-01-51011	R&M - CLA Valves	10,000	0	1,885	205	1,869	0	4,438	8,398	83.98%
02-5-01-51140	General Supplies & Expenses	2,000	234	221	0	0	516	87	1,058	52.91%
02-5-01-51210	Utilities - Power Purchases	1,650,000	425,299	244,007	105,479	66,085	58,684	45,561	945,115	57.28%
02-5-01-51211	Utilities - Electricity & Fuel	5,000	1,199	1,332	504	408	378	404	4,224	84.48%
02-5-01-51316	Imported Water Purchases	1,100,000	261,701	267,090	1,786	0	57,121	86,000	673,699	61.25%
02-5-01-54019	Licenses & Permits	25,000	3,133	2,808	708	0	1,300	8,583	16,532	66.13%
02-5-01-54110	Laboratory Services	75,000	7,873	33,062	4,999	4,192	1,170	4,968	56,262	75.02%
02-5-01-57040	Y/R/M/F Operating Expense	600,000	166,177	172,600	31,665	105,924	108,585	89,809	674,759	112.46%
	WATER RESOURCE TOTALS	5,050,200	1,156,338	1,126,947	249,874	282,564	365,658	399,197	3,580,578	70.90%
02-5-03-50010	Labor-Public Works	1,042,800	141,364	243,045	78,510	80,049	75,990	122,638	741,595	71.12%
02-5-03-50011	Labor Credit	0	(1,076)	(8,808)	0	(811)	(1,819)	(261)	(12,774)	
02-5-03-50013	Benefits-Fica	92,000	11,609	19,771	6,528	6,642	6,328	10,015	60,893	66.19%
02-5-03-50014	Benefits-Life Insurance	7,000	1,117	1,169	867	596	596	611	4,957	70.81%
02-5-03-50016	Benefits-HealthDefrd Comp	300,000	60,987	76,514	35,279	27,116	33,854	36,878	270,627	90.21%
02-5-03-50017	Benefits-Disability Insurance	16,500	2,427	3,225	1,516	1,294	1,258	1,682	11,402	69.11%
02-5-03-50019	Benefits-Workers Compensation	45,000	7,989	8,950	4,013	9,659	0	4,013	34,624	76.94%
02-5-03-50021	Benefits-PERS	73,000	10,109	11,230	3,371	3,281	3,193	4,651	35,835	49.09%
02-5-03-50022	Benefits-PERS Employer	160,000	10,344	16,476	5,341	5,243	5,224	7,944	60,573	31.61%
02-5-03-50023	Benefits-Uniforms	6,000	808	5,008	441	397	828	389	7,871	131.19%
02-5-03-50024	Benefits-Vacation & Sick Pay	4,000	729	1,260	243	243	243	542	3,260	81.51%
02-5-03-50025	Benefits-Boot Allowance	3,500	330	3,014	175	0	200	0	3,719	106.25%
02-5-03-51001	R & M - Vehicles & Equipment	150,000	59,574	27,747	16,440	44,482	15,323	18,869	182,435	121.62%
02-5-03-51011	R&M - Valves	10,000	0	0	1,319	901	402	(7)	2,615	26.15%
02-5-03-51020	R&M - Pipelines	275,000	51,027	54,906	20,996	59,165	22,628	5,458	214,181	77.88%
02-5-03-51021	R&M - Service Lines	100,000	20,528	18,972	12,323	8,297	4,024	(16)	64,136	64.13%
02-5-03-51022	R&M - Fire Hydrants	25,000	1,294	4,969	7,686	12,797	5,185	4,270	36,201	144.80%
02-5-03-51030	R&M - Water Meters	75,000	25,996	31,106	3,397	12,258	7,503	26,465	106,726	142.30%
02-5-03-51092	Equipment Credits	0	(417)	(5,929)	0	(991)	(564)	(375)	(8,274)	
02-5-03-51140	General Supplies & Expenses	1,000	115	490	0	53	76	0	734	73.42%
	PUBLIC WORKS TOTALS	2,385,800	404,855	513,116	198,446	270,670	180,474	243,767	1,811,327	75.92%

FY 2016 - Water Expenses

ACCOUNT#	DESCRIPTION	BUDGET	Qtr 1 Totals	Qtr 2 Totals	Jan '16	Feb '16	Mar '16	April '16	Year to Date	Percentage YTD
02-5-06-50010	Labor-Administration	705,000	131,473	160,578	47,076	47,066	47,436	72,783	506,411	71.83%
02-5-06-50011	Labor Credit	0	2,252	2,925	0	0	0	0	5,177	
02-5-06-50012	Director Fees	19,000	3,216	4,379	871	1,900	2,463	2,744	15,573	81.96%
02-5-06-50013	Benefits-Fica	47,500	10,307	11,635	4,246	4,295	4,366	6,451	41,300	86.95%
02-5-06-50014	Benefits-Life Insurance	3,200	662	690	232	225	225	231	2,265	70.77%
02-5-06-50016	Benefits-Health/Defrd Comp	165,000	37,111	42,287	13,571	13,428	13,725	16,153	136,275	82.59%
02-5-06-50017	Benefits-Disability Insurance	7,500	1,626	1,397	647	638	641	889	5,838	77.84%
02-5-06-50019	Benefits-Workers Compensation	15,750	2,000	2,781	1,000	3,000	0	1,000	9,781	62.10%
02-5-06-50021	Benefits-PERS	40,286	8,944	11,681	3,337	3,337	3,303	4,896	35,498	88.12%
02-5-06-50022	Benefits PERS Employer	85,000	9,152	11,952	3,415	3,415	3,410	5,175	36,519	42.96%
02-5-06-50023	Uniforms	2,000	293	604	93	87	514	81	1,673	83.63%
02-5-06-50024	Benefits-Vacation & Sick Pay	10,000	3,099	3,365	1,099	715	715	834	9,727	97.27%
02-5-06-50025	Benefits-Boots	1,000	0	0	0	179	0	0	179	17.86%
02-5-06-51003	R&M - Structures	20,000	1,068	18,961	13,062	6,698	21,745	(179)	61,355	306.78%
02-5-06-51091	Expense Credits (overhead)	0	(236)	(3,672)	0	(606)	(843)	(297)	(5,656)	
02-5-06-51120	Safety Equipment/Supplies	25,000	6,668	5,418	2,472	854	2,525	274	18,212	72.85%
02-5-06-51125	Petroleum Products	125,000	23,609	19,638	5,166	2,037	5,101	7,489	63,039	50.43%
02-5-06-51130	Office Supplies & Expenses	30,000	7,581	6,840	1,775	1,912	4,670	2,730	25,506	85.02%
02-5-06-51140	General Supplies & Expenses	30,000	2,241	12,104	5,927	1,591	830	5,967	28,661	95.54%
02-5-06-51199	Disaster Incidences	0	0	0	0	0	0	0	0	
02-5-06-51211	Utilities - Electricity	28,000	9,190	6,562	1,889	1,669	1,760	1,780	22,850	81.61%
02-5-06-51213	Utilities - Natural Gas	3,000	83	630	455	282	180	0	1,630	54.33%
02-5-06-54002	Dues & Subscriptions	10,000	1,346	10,249	3,330	492	953	328	16,687	166.97%
02-5-06-54005	Computer Expenses	65,000	16,704	31,032	1,439	12,958	11,399	4,323	77,845	119.76%
02-5-06-54010	Postage	6,000	1,769	1,584	161	1,553	35	56	5,127	85.46%
02-5-06-54011	Printing & Publications	7,500	446	0	0	449	0	0	895	11.94%
02-5-06-54012	Education & Training	15,000	1,754	587	2,530	441	277	358	5,948	39.65%
02-5-06-54013	Utility Billing Expenses	180,000	35,943	34,268	13,509	12,083	10,444	8,144	114,390	63.55%
02-5-06-54014	Public Relations	9,000	467	1,090	249	0	0	25	1,832	20.36%
02-5-06-54016	Travel Related Expenses	10,000	411	583	494	587	31	33	2,139	21.39%
02-5-06-54017	Certifications & Renewals	6,000	730	2,207	470	595	175	457	4,634	77.23%
02-5-06-54020	Meeting Related Expenses	6,000	667	1,736	435	188	154	114	3,295	54.91%
02-5-06-54024	Utilities - Waste Disposal	2,750	530	594	177	322	209	177	2,009	73.04%
02-5-06-54025	Utilities - Telephone	42,000	10,117	10,261	3,406	3,462	3,416	2,405	33,067	78.73%
02-5-06-54099	Conservation & Rebates	0	32,162	87,981	177,346	90,561	(11,988)	5,340	381,401	
02-5-06-54104	Contractual Services	65,000	27,284	31,292	12,749	6,872	5,057	10,920	94,172	144.88%
02-5-06-54107	Legal	45,000	8,523	7,650	1,575	3,542	3,338	1,213	25,840	57.42%
02-5-06-54108	Audit & Accounting	16,000	8,775	1,710	0	0	0	0	10,485	65.53%
02-5-06-54109	Professional Fees	150,000	38,660	27,584	7,161	18,650	7,384	3,360	102,798	68.53%
02-5-06-55500	Depreciation Reserves	200,000	49,997	50,001	16,667	16,667	16,667	16,667	166,666	83.33%
02-5-06-56001	Infrastructure Replacement	1,265,000	316,266	316,248	105,416	105,416	105,416	105,416	1,054,168	83.33%
02-5-06-57030	Insurance	105,000	24,981	24,984	8,328	8,328	8,328	8,328	83,277	79.31%
02-5-06-57090	Regulatory Compliance	55,000	2,561	1,073	700	600	1,133	0	6,067	11.03%
02-5-06-57096	Electron Related Expenses	0	0	0	0	0	0	0	0	
02-5-06-57096	Beaumont Basin Watermaster	60,000	0	25,451	0	20,170	(14)	0	45,607	76.01%
02-5-06-57199	Suspense	0	0	(12,755)	12,755	0	0	0	0	
ADMINISTRATION TOTALS		3,682,486	840,331	976,132	475,220	396,657	275,169	296,664	3,260,172	88.53%

FY 2016 - Water Expenses

ACCOUNT#	DESCRIPTION	BUDGET	Qtr 1 Totals	Qtr 2 Totals	Jan '16	Feb '16	Mar '16	April '16	Year to Date	Percentage YTD
02-5-40-57201	Debt Srv-Series 2015A Princ.(25009)	980,000	980,000	0	0	0	0	0	980,000	100.00%
02-5-40-57402	Interest-Long-Term Debt Bonds	1,314,014	673,457	0	0	640,556	0	0	1,314,014	100.00%
	40 - Debt	2,294,014	1,653,457	0	0	640,556	0	0	2,294,014	100.00%
02-5-40-57001	Asset Acq. - Water Resources	0	0	0	0	0	0	0	0	--
02-5-40-57003	Asset Acq. - Public works	0	0	0	0	0	0	0	0	--
02-5-40-57006	Asset Acq. - Admin (fuel master)	0	0	0	24,945	0	11,304	0	36,249	--
	40 - Capital Outlay	0	0	0	24,945	0	11,304	0	36,249	--
			4,054,981	2,616,195					10,982,340	
	TOTAL WATER EXPENSES	13,412,500	4,054,981	2,616,195	948,486	1,590,446	832,604	939,628	10,982,340	81.88%

FY 2016 - Sewer Expenses

ACCOUNT#	DESCRIPTION	BUDGET	Qtr 1 Totals	Qtr 2 Totals	Jan '16	Feb '16	Mar '16	April '16	Year to Date	Percentage YTD
03-5-02-50010	Labor-S Treatment	985,300	158,574	218,569	66,092	60,831	61,621	90,746	656,433	66.62%
03-5-02-50013	Benefits-Fica	75,000	12,943	17,857	5,394	4,988	5,049	7,367	53,598	71.46%
03-5-02-50014	Benefits-Life Insurance	5,000	942	920	313	310	310	310	3,107	62.14%
03-5-02-50016	Benefits-Health\Defrd Comp	200,000	47,536	41,887	15,010	15,010	15,010	15,874	150,326	75.16%
03-5-02-50017	Benefits-Disability Insurance	15,000	2,472	2,784	949	897	904	1,172	9,179	61.19%
03-5-02-50019	Benefits-Workers Compensation	45,000	7,989	8,950	4,013	9,988	0	4,013	34,953	77.67%
03-5-02-50021	Benefits-PERS	60,000	10,655	13,810	3,935	3,749	3,857	5,688	41,693	69.49%
03-5-02-50022	Benefits-PERS Employer	130,000	11,483	14,689	4,197	4,197	4,117	6,056	44,738	34.41%
03-5-02-50023	Benefits-Uniforms	4,500	968	2,431	261	226	389	211	4,487	99.72%
03-5-02-50024	Benefits-Vacation & Sick Pay	5,000	897	1,129	323	323	323	484	3,478	69.56%
03-5-02-50025	Benefits-Boot Allowance	2,400	714	724	0	0	0	0	1,437	59.89%
03-5-02-51003	R&M - Structures	225,000	137,313	142,410	32,097	2,071	22,916	27,391	364,199	161.87%
03-5-02-51010	R&M - Automation Control	65,000	3,298	10,929	5,320	9,115	7,665	0	36,326	55.89%
03-5-02-51106	Chemicals	490,000	81,393	75,581	34,905	19,966	13,927	29,914	255,685	52.18%
03-5-02-51111	Propane	5,000	2,357	20,067	0	2,020	0	4,139	28,583	571.65%
03-5-02-51115	Laboratory Supplies	30,000	8,856	5,452	2,051	915	3,765	219	21,258	70.86%
03-5-02-51140	General Supplies & Expenses	1,000	88	352	0	350	0	0	790	78.96%
03-5-02-51210	Utilities - Power Purchases	830,000	266,263	193,803	66,105	59,372	4,925	56,746	647,213	77.98%
03-5-02-54110	Laboratory Services	115,000	13,357	26,421	10,496	11,569	15,187	9,743	86,773	75.45%
03-5-02-57031	Sludge Disposal	300,000	68,598	69,550	25,487	21,940	23,948	0	209,521	69.84%
03-5-02-57034	Brine Operating Expenses	201,616	133	29,840	128	82,542	(26,741)	933	86,837	43.07%
	TREATMENT TOTALS	3,789,816	836,828	898,153	277,075	310,379	157,172	261,007	2,740,613	72.32%

FY 2016 Sewer Expenses

ACCOUNT#	DESCRIPTION	BUDGET	Qtr 1 Totals	Qtr 2 Totals	Jan '16	Feb '16	Mar '16	April '16	Year to Date	Percentage YTD
03-5-06-50010	Labor-Administration	660,000	121,015	147,941	43,591	43,580	43,949	67,554	467,630	70.85%
03-5-06-50011	Labor Credit	0	2,252	2,925	0	0	0	0	5,177	
03-5-06-50012	Directors Fees	19,000	3,216	4,379	871	1,900	2,463	2,744	15,573	81.96%
03-5-06-50013	Benefits-Fica	43,000	9,417	10,747	3,949	3,998	4,070	6,017	38,198	88.83%
03-5-06-50014	Benefits-Life Insurance	3,600	650	609	222	214	214	226	2,135	59.29%
03-5-06-50016	Benefits-Health/Defrd Comp	145,000	33,900	38,943	12,119	12,198	12,496	14,071	123,727	85.33%
03-5-06-50017	Benefits-Disability Insurance	7,500	1,504	1,351	611	603	607	839	5,514	73.52%
03-5-06-50019	Benefits-Workers Compensation	27,500	2,000	2,781	1,000	3,000	0	1,000	9,781	35.57%
03-5-06-50021	Benefits-PERS	36,000	8,290	10,826	3,093	3,093	3,059	4,530	32,892	91.37%
03-5-06-50022	Benefits PERS Employer	75,000	8,483	11,078	3,165	3,165	3,160	4,800	33,852	45.14%
03-5-06-50023	Benefits-Uniforms	2,000	205	443	70	61	485	289	1,551	77.57%
03-5-06-50024	Benefits-Vacation & Sick Pay	10,000	3,009	3,365	1,090	715	715	834	9,728	97.28%
03-5-06-50025	Benefits-Boot Allowance	1,740	0	0	0	0	0	0	0	0.00%
03-5-06-51120	Safety Equipment/Supplies	10,000	1,706	2,256	2,959	75	24	0	7,021	70.21%
03-5-06-51125	Petroleum Products	22,500	4,621	3,000	1,268	3,413	1,000	1,394	14,695	65.31%
03-5-06-51130	Office Supplies	4,000	2,282	878	19	29	429	1,046	4,683	117.08%
03-5-06-51140	General Supplies & Expenses	17,500	851	9,099	5,780	103	576	5,819	22,229	127.03%
03-5-06-51199	Disaster Repairs (lift station 2)	0	33,643	3,307	0	0	0	0	36,949	
03-5-06-54002	Dues & Subscriptions	10,000	1,240	4,816	3,544	164	328	0	10,091	100.91%
03-5-06-54003	Management & Admin Services	160,000	39,994	40,002	13,334	13,334	13,334	13,334	133,332	83.33%
03-5-06-54005	Computer Expenses	95,000	20,363	30,278	2,442	12,308	13,527	2,873	81,792	86.10%
03-5-06-54011	Printing & Publications	1,500	413	81	0	0	0	0	494	32.93%
03-5-06-54012	Education & Training	7,000	917	473	2,508	659	158	308	5,022	71.74%
03-5-06-54014	Public Relations	7,500	467	825	0	0	0	0	1,293	17.24%
03-5-06-54016	Travel Related Expenses	5,000	1,217	899	494	648	16	0	3,274	65.47%
03-5-06-54017	Certifications & Renewals	5,000	406	2,478	496	471	230	1,967	6,048	120.96%
03-5-06-54019	Licenses & Permits	50,000	10,929	44,018	2,000	1,315	0	245	58,507	117.01%
03-5-06-54020	Meeting Related Expenses	5,000	538	1,588	59	124	95	68	2,473	49.46%
03-5-06-54024	Utilities - Waste Disposal	12,500	3,161	3,161	1,054	1,198	1,054	1,054	10,681	85.45%
03-5-06-54025	Utilities - Telephone	20,000	4,032	4,294	1,432	1,404	1,373	968	13,503	67.51%
03-5-06-54030	Drinking Water	1,000	297	210	65	58	87	131	848	84.83%
03-5-06-54104	Contractual Services	30,000	16,251	19,495	7,126	3,240	1,417	1,511	49,039	163.46%
03-5-06-54107	Legal	45,000	3,760	5,325	3,300	3,167	1,838	1,213	18,602	41.34%
03-5-06-54108	Audit & Accounting	16,000	8,775	1,710	0	0	0	0	10,485	65.53%
03-5-06-54109	Professional Fees	150,000	50,662	73,851	22,459	6,250	21,986	3,679	178,887	119.26%
03-5-06-55500	Depreciation Reserves	500,000	124,997	125,001	41,667	41,667	41,667	41,667	416,666	83.33%
03-5-06-56001	Infrastructure Replacement	800,000	199,970	200,010	66,670	66,670	66,670	66,670	666,660	83.33%
03-5-06-57030	Insurance	105,000	24,981	25,572	8,328	8,328	8,328	8,328	83,866	79.87%
03-5-06-57030	Regulatory Compliance	42,000	1,790	0	0	0	0	0	1,790	4.26%
	ADMINISTRATION TOTALS	3,151,840	752,203	838,016	256,787	237,151	245,352	255,178	2,584,687	82.01%

FY 2016 - Sewer Expenses

ACCOUNT#	DESCRIPTION	BUDGET	Qtr 1 Totals	Qtr 2 Totals	Jan '16	Feb '16	Mar '16	April '16	Year to Date	Percentage YTD
03-5-07-50010	Labor-Environmental Control	310,000	82,457	106,626	37,119	36,410	35,734	48,206	346,552	111.79%
03-5-07-50011	Labor Credit	0	(310)	(916)	0	0	0	0	(1,225)	
03-5-07-50013	Benefits-Fica	28,000	6,482	8,417	2,889	2,834	2,782	3,810	27,214	97.19%
03-5-07-50014	Benefits-Life Insurance	2,000	426	423	297	203	203	192	1,743	87.14%
03-5-07-50016	Benefits-HealthDefrd Comp	75,000	26,352	27,806	12,449	12,863	12,456	9,034	100,961	134.61%
03-5-07-50017	Benefits-Disability Insurance	4,500	1,175	1,377	613	513	507	623	4,809	106.86%
03-5-07-50019	Benefits-Workers Compensation	30,000	2,394	3,354	1,500	5,832	0	1,500	14,580	48.60%
03-5-07-50021	Benefits-PERS	20,000	4,823	6,414	1,495	1,823	1,703	2,734	18,992	94.96%
03-5-07-50022	Benefits-PERS Employer	45,000	4,935	6,563	2,284	2,279	2,275	3,064	21,401	47.56%
03-5-07-50023	Benefits-Uniforms	2,000	320	1,681	132	128	156	131	2,548	127.40%
03-5-07-50024	Benefits-Vacation & Sick Pay	2,000	463	590	365	365	365	351	2,500	125.00%
03-5-07-50025	Benefits-Boot Allowance	800	157	199	0	168	194	0	718	89.76%
03-5-07-51003	R&M - Structures	270,000	31,041	42,778	13,816	14,642	54,207	5,513	161,998	60.00%
03-5-07-51140	General Supplies & Expenses	1,000	34	326	497	0	0	0	857	85.67%
03-5-07-51241	Lift Station #1	85,000	17,711	15,665	3,299	3,249	11,040	3,787	54,751	64.41%
03-5-07-51242	Lift Station #2	15,000	4,874	5,345	1,076	1,010	1,003	760	14,067	93.78%
03-5-07-51243	Lift Station #3	5,000	780	1,577	221	228	204	213	3,223	64.46%
03-5-07-51244	Lift Station #4	20,000	7,700	15,007	4,366	1,055	465	615	29,229	146.14%
03-5-07-51248	Lift Station #8	3,000	145	154	52	45	44	49	489	16.30%
03-5-07-54109	Professional Fees	60,000	6,662	13,120	2,871	2,048	2,578	2,531	29,809	49.68%
03-5-07-54110	Laboratory Services	4,000	0	1,623	0	0	1,185	0	2,808	70.20%
	ENVIRONMENTAL CONTROL TOTAL	982,300	198,623	258,130	85,360	85,695	127,101	83,113	838,023	85.31%
03-5-40-57202	Debt Service - Principal - WRWRF	2,087,629	2,097,629	0	0	0	0	0	2,097,629	100.00%
03-5-40-57203	Debt Service - Principal - Brineline	401,939	0	401,939	0	0	0	0	401,939	100.00%
03-5-40-57204	Debt Service - Principal - WISE	125,600	0	0	0	0	125,283	0	125,283	99.75%
03-5-40-57205	Debt Service - Principal - R 10.3	36,663	0	0	0	0	36,691	0	36,691	100.08%
03-5-40-57206	Debt Service - Principal - Crow & B12-1	18,357	0	0	0	0	13,795	0	13,795	75.15%
03-5-40-57403	Debt Service - Interest	1,215,856	826,039	247,335	0	0	83,013	0	1,156,388	95.11%
	40 - Debt	3,896,044	2,923,669	649,274	0	0	258,783	0	3,831,725	98.35%
03-5-40-57002	Asset Acq. - Treatment	0	0	0	0	0	0	0	0	
03-5-40-57006	Asset Acq. - Admin (fuel master)	0	0	0	6,236	0	2,826	0	9,062	
03-5-40-57007	Asset Acq. - EC (ADS flow monitors & smart covers)	0	0	66,409	0	0	0	0	66,409	
	40 - Capital Outlay	0	0	66,409	6,236	0	2,826	0	75,471	
	TOTAL SEWER EXPENSES	11,820,000	4,711,323	2,709,981	625,458	633,225	791,234	599,298	10,070,519	85.20%

FY 2016 - Recycled Expenses

ACCOUNT#	DESCRIPTION	BUDGET	Qtr 1 Totals	Qtr 2 Totals	Jan '16	Feb '16	Mar '16	April '16	Year to Date	Percentage YTD
04-5-06-50010	Labor-Recycled Water	226,630	45,474	53,323	13,862	15,883	15,469	23,765	167,776	74.03%
04-5-06-50012	Director Fees	2,500	0	2,500	0	0	0	0	2,500	100.00%
04-5-06-50013	Benefits-FICA	5,000	3,609	3,765	1,169	1,337	1,301	1,995	13,176	263.53%
04-5-06-50014	Benefits-Life Insurance	250	(6)	(8)	(2)	(2)	(2)	(3)	(22)	-8.89%
04-5-06-50016	Benefits-Health & Def Comp	15,000	6,356	6,835	2,105	2,281	2,281	2,471	22,329	148.86%
04-5-06-50017	Benefits-Disability Insurance	500	409	324	138	157	153	233	1,414	282.75%
04-5-06-50019	Benefits-Workers Compensation	3,000	394	1,175	197	697	0	197	2,659	88.64%
04-5-06-50021	Benefits-PERS Employee	2,200	327	427	122	56	464	1,349	2,745	124.79%
04-5-06-50022	Benefits-PERS Employer	5,000	335	437	125	228	646	1,624	3,395	67.91%
04-5-06-50023	Benefits-Uniforms	200	178	925	62	58	71	57	1,350	674.97%
04-5-06-50024	Benefits-Vacation & Sick Pay	500	81	140	84	84	27	60	476	95.11%
04-5-06-50025	Benefits-Boots	250	0	0	0	0	0	0	0	0.00%
04-5-06-51003	R & M-Structures	50,000	3,377	16,192	72	164	16	57	19,879	39.76%
04-5-06-51020	R & M-Pipelines	7,500	0	1,840	1,087	24	0	0	2,951	39.35%
04-5-06-51021	R & M-Service Lines	15,000	701	498	0	0	0	2,696	3,895	25.97%
04-5-06-51022	R & M-Fire Hydrants	5,000	0	0	0	0	0	0	0	0.00%
04-5-06-51030	R & M-Meters	1,500	5,701	18,918	924	68	222	0	25,833	1722.20%
04-5-06-51140	General Supplies & Expenses	250	58	496	1,275	24	71	1,255	3,179	1271.55%
04-5-06-51210	Utilities-Power Purchases	77,720	586	864	288	268	77,315	5,901	85,223	109.65%
04-5-06-54002	Dues & Subscriptions	4,000	40	412	3,104	0	0	0	3,556	88.90%
04-5-06-54005	Computer Expense	5,000	355	5,865	0	0	0	235	6,454	129.09%
04-5-06-54011	Printing & Publications	1,000	122	0	0	449	0	0	571	57.15%
04-5-06-54012	Education & Training	3,500	185	1,295	465	47	68	35	2,095	59.86%
04-5-06-54014	Public Relations	3,500	104	769	0	0	0	0	873	24.95%
04-5-06-54016	Travel Related Expenses	2,000	0	1,914	110	1,524	278	0	3,827	191.34%
04-5-06-54017	Certifications & Renewals	250	0	0	0	800	0	0	800	320.00%
04-5-06-54019	Licenses & Permits	2,500	0	31,564	0	0	0	0	31,564	1262.55%
04-5-06-54020	Meeting Related Expenses	250	30	184	0	63	112	68	458	183.07%
04-5-06-54025	Telephone	750	419	419	140	140	140	0	1,258	167.72%
04-5-06-54010	Contractual Services	1,500	2,718	52	824	17	21	0	3,633	242.17%
04-5-06-54107	Legal	1,000	788	2,513	188	338	0	0	3,825	382.50%
04-5-06-54108	Audit & Accounting	0	1,950	380	0	0	0	0	2,330	
04-5-06-54109	Professional Fees	25,000	32,090	52,084	29,262	6,105	35,358	860	155,758	623.03%
04-5-06-54110	Laboratory Services	1,000	0	0	0	0	0	0	0	0.00%
04-5-06-55500	Depreciation	8,000	1,970	2,010	670	670	670	670	6,660	83.25%
04-5-06-57030	Infrastructure Replacement	25,000	6,253	6,249	2,083	2,083	2,083	2,083	20,834	83.34%
04-5-06-57040	Regulatory Compliance	25,000	27	5,446	1,558	136	3,695	0	10,861	43.44%
04-5-06-57040	Environmental Compliance	10,000	0	0	0	0	0	0	0	0.00%
			114,628	219,809	59,910	33,697	140,461	45,610	614,115	114.31%
	TOTAL RECYCLED EXPENSES	537,250	114,628	219,809	59,910	33,697	140,461	45,610	614,115	114.31%



Date: May 18, 2016

Prepared By: Joseph Zoba, General Manager

Subject: Selection of a Candidate Representing Special Districts on the Local Agency Formation Commission - San Bernardino

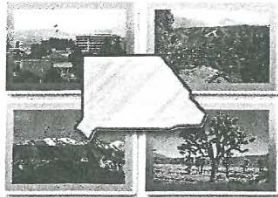
Recommendation: That the Board selects a candidate and directs District staff to submit the ballot for the special district member of the Local Agency Formation Commission.

On April 28, 2016, the Yucaipa Valley Water District received information regarding the special district member election for the Local Agency Formation Commission for San Bernardino County. Due to the lack of votes from prior correspondence, the voting period has been extended until May 26, 2016.

The candidates for a regular special district member of the Local Agency Formation Commission include:

- Cary Alderson (Twentynine Palms Cemetery District);
- Kimberly Cox (Mojave Water Agency); and
- Gregory Young (West Valley Water District).

The the Board of Directors should consider selecting one of the candidates and direct the District staff to submit the completed ballot to the Local Agency Formation Commission.



LAFCO

**Local Agency
Formation Commission
for San Bernardino County**

215 North D Street, Suite 204
San Bernardino, CA 92415-0490
909 388 0480 | Fax 909 885 8170
E-mail: lafco@lafco.sbcounty.gov
www.sbclafco.org

Established by the State of California
to serve the Citizens, Cities, Special Districts
and the County of San Bernardino

COMMISSIONERS

JIM BAGLEY
Public Member

KIMBERLY COX, Vice Chair
Special District

JAMES V. CURTALO, Chair
Special District

ROBERT A. LOVINGOOD
Board of Supervisors

LARRY McCALLON
City Member

JAMES RAWOS
Board of Supervisors

DIANE WILLIAMS
City Member

ALTERNATES

STEVEN FARRELL
Special District

JANICE RUTHERFORD
Board of Supervisors

SUNIL SETHI
Public Member

ACQUANETTA WARREN
City Member

STAFF

KATHLEEN ROLLINGS-McDONALD
Executive Officer

SAMUEL MARTINEZ
Assistant Executive Officer

MICHAEL TVERPE
Project Manager

REBECCA LOWERY
Clerk to the Commission

LEGAL COUNSEL

CLARK H. ALSOP

SCANNED

RECEIVED

APR 28 2016

YUCAIPA VALLEY
WATER DISTRICT

April 26, 2016

TO: Presidents of the Boards of Directors of the Independent Special Districts in San Bernardino County

Subject: Extension of Special Districts Election for Regular Special District LAFCO Member

Due to the failure to receive 26 ballots required to establish a quorum by the deadline of April 25, 2016, by distribution of this letter, the official voting process for the Regular Special Districts Member of the Local Agency Formation Commission is hereby extended for 30-days. Twenty-one ballots were received by the close of business on April 25, 2016. The extended voting period will end on May 26, 2016, at 5:00 p.m. If you have already submitted your ballot there is no need to resubmit -- your ballot will be counted.

The voting instructions for this selection are as follows:

1. Each District may vote for one candidate. The vote shall be cast as directed by the Board of Directors of the District through consideration at a Board Hearing and a roll call vote. A copy of the information provided by the candidates is included for your information.
2. The signed original ballot, with the name of each voting Board Member outlined, must be received in the LAFCO Office by 5:00 p.m. on **May 26, 2016**. If a faxed copy of the ballot is provided by the May 26 deadline, the original signed copy must be received by 5:00 p.m. on June 1, or the ballot will be declared invalid.
3. Twenty-six (26) ballots are required to be received for selection of the Special District position.

The completed ballot is to be mailed to:

Kathleen Rollings-McDonald, Executive Officer
Local Agency Formation Commission
215 N. D Street, Suite 204
San Bernardino, CA 92415

If you are faxing a copy of the ballot, the LAFCO fax number is (909) 885-8170. As outlined in Item #2 above, if the ballot is faxed to the LAFCO office, the original signed copy of the ballot will need to be mailed to the above address and received by 5:00 p.m. on June 1, 2016 to be considered in the election.

Please let me know if you have any questions concerning the extension of the selection process. You may contact me at the address listed above, by e-mail at kmcdonald@lafco.sbcounty.gov, or by phone at (909) 388-0480.

Sincerely,

KATHLEEN ROLLINGS-McDONALD
Executive Officer

Enclosure

BALLOT

REGULAR SPECIAL DISTRICT MEMBER OF THE LOCAL AGENCY FORMATION COMMISSION

The _____
(Name of District)

hereby votes for the marked candidate as indicated below:

REGULAR MEMBER OF LAFCO:

_____ **CARY ALDERSON (Member of the Board of Directors of
the Twentynine Palms Cemetery District)**

_____ **KIMBERLY COX (Incumbent - Member of the Board of
Directors of the Mojave Water Agency)**

_____ **GREGORY YOUNG (Member of the Board of Directors of
the West Valley Water District)**

I, _____, do hereby certify that at its regularly-
scheduled meeting of _____, the Board of Directors voted to elect
the above-marked candidate as the Regular Special District Member of the Local Agency
Formation Commission of San Bernardino County, by the following vote:

AYES:

NOES:

ABSENT:

ABSTAIN:

District President/Authorized Board Member

Dated: _____

The Marine Corps brought me to the beautiful southern California over 20 years ago, and when I decided to transition to civilian life I stayed to give back to the communities that supported my family and me, I did not hold back.

I enjoy staying involved in the community that so many call home. Interacting with the citizenry and many visitors to the area brings a wealth of insights.

I have served in many capacities in my efforts to bring about needed change and growth. I served on the Planning Commission for the City of Twentynine Palms for 8 years, the Twentynine Palms Public Cemetery District as a Trustee for year now, and I am the President of the Twentynine Palms Chamber of Commerce.

I continue to be of service to our country by instructing Marines in the use of electronic systems and there tactics of employment. I hold certificates in many fields; Federal Emergency Management, Counter Intelligence and Anti-Terrorism Force Protection, Records and Directives Management, Operational and Cyber Security. I am also a graduate California State University Environmental Leadership Academy.

I look forward to continuing to contribute to the wellbeing and future prosperity of our every growing home.

Carey Alderson



13846 Conference Center Drive ♦ Apple Valley, California 92307
Phone (760) 946-7000 ♦ Fax (760) 240-2642 ♦ www.mojavewater.org

March 23, 2016

Dear Special District Members:

My name is Kimberly Cox and I have been honored to represent Special Districts as the Regular Member on the San Bernardino County Local Agency Formation Commission for 12 years. I have served as the Vice-Chair of the Commission for the past three years. Along with Chairman James Curatalo we strive to represent the interests of Special Districts throughout our vast county.

I would appreciate your vote for my continued service in this unique capacity. It is important that Special Districts have a strong presence on the LAFCO Commission. As a General Manager of a Special District and an elected official on a regional water board, I understand the multiple pressures at play within the Special District community.

It would be a pleasure to discuss my continued service on LAFCO with you. Please feel free to contact me at 760-954-4955 should you have anything you would like to discuss.

Thank you for your consideration.

Kind regards,



Kimberly Cox
Vice-President

Mojave Water Agency Board of Directors



Gregory Young, PMP
Director - West Valley Water District
Letter of Intent for LAFCO Regular Special Districts Member Position



Greg Young joined the West Valley Water District Board of Directors in December 2015, representing the communities of Fontana, Colton, Lytle Creek, Rialto, Bloomington, portions of the unincorporated area of San Bernardino County as well as a portion of Jurupa Valley in Riverside County.

Greg has earned a Bachelor's and Master's Degree from Cal Poly Pomona in Business Administration with an emphasis in Operations Management and Project Management.

Greg Young serves as Chairman of West Valley Water District's Engineering and Planning Committee in which he advocates for improved operations and improvement of the district's infrastructure. Additionally, he also serves on the district's Finance Committee.

Professionally, Greg has worked both in the private sector and in Government including working for the United State House of Representatives. Currently, Greg owns his own project management consulting business which strives to help organizations improve their project management processes. Greg is active in the Project Management Institute, the leading global association for project, program, and portfolio management. Greg holds his Project Management Professional (PMP) certification from the Project Management Institute which he earned in November, 2013. Greg serves as Vice President of Programs for the California Inland Empire Chapter of PMI. In November, 2015, Greg also completed a Business Analyst Certificate Program from the University of California, Irvine, further expanding his analytical skills.

As a long-time resident of San Bernardino County with family ties in the San Bernardino Valley, the mountain communities, and the High Desert, Greg is very interested in representing special districts on LAFCO due to its important role in annexations, sphere of influence, and special districts consolidation. Our county faces many challenges and Greg is willing to help the Special Districts meet those challenges.



Date: May 18, 2016

Prepared By: Brent Anton, Engineering Manager

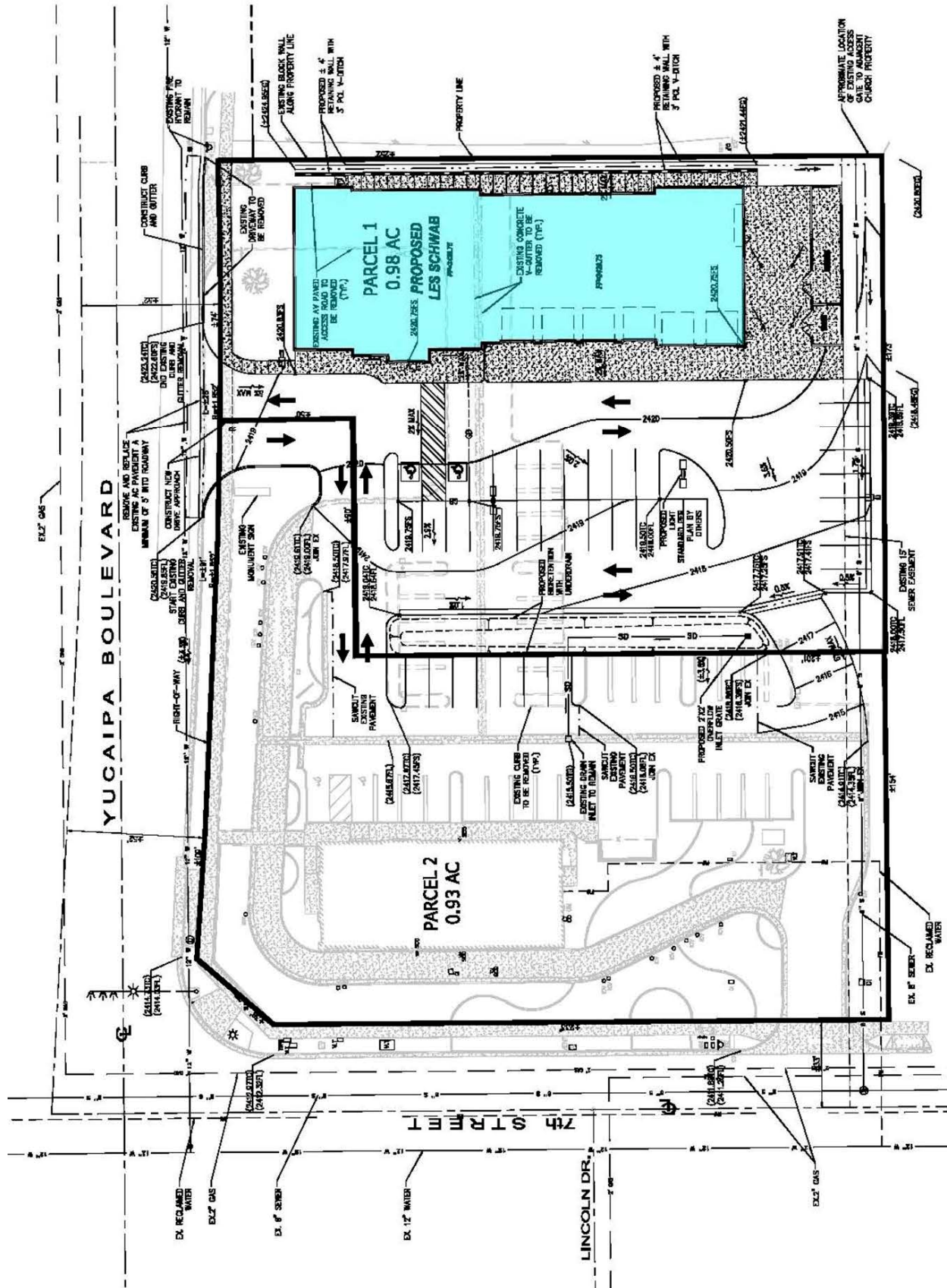
Subject: Consideration of Development Agreement No. 2016-04 to Provide Water and Sewer Facilities and Service to the Private Development of Parcel Map 19647, SFP-E, LLC (Assessor's Parcel Number 0318-131-05)

Recommendation: That the Board of Directors approve Development Agreement No. 2016-04 as presented.

This development involves the development of a 13,188 square foot automotive tire shop on a single parcel totaling 0.98 acres, located on the south east corner of Yucaipa Boulevard and 7th Street in the City of Yucaipa, San Bernardino County.

The District staff has been working with the developers for the preparation of a development agreement. The specific conditions of service for this project are included in Part 4 of the attached agreement.





AGREEMENT NO. 2016-04

AGREEMENT TO PROVIDE WATER AND SEWER SERVICE TO THE
PRIVATE DEVELOPMENT OF
PARCEL MAP NUMBER 19647

This Agreement is made and effective this 18th day of May, 2016, by and between the YUCAIPA VALLEY WATER DISTRICT, a public agency ("DISTRICT") and SFP-E, LLC ("DEVELOPER"). Each is sometimes referred to herein as a "Party" and jointly as the "Parties".

Contact information for the parties is as follows:

DISTRICT:

Yucaipa Valley Water District
12770 Second Street
Post Office Box 730

Yucaipa, California 92399-0730

Attn: Joseph B. Zoba, General Manager

Telephone: (909) 797-5119

Facsimile: (909) 797-6381

DEVELOPER:

SFP-E, LLC
20900 NE Cooley Road

Bend, OR 97701

Attn: George Bunting, Project Coordinator

Telephone: (541) 416-5241

Facsimile: (541) 416-5454

PROJECT OVERVIEW

This development consists of an approximately 13,188 square foot automotive tire shop on a proposed single parcel totaling 0.98 acres. The project consists of APN 0318-131-05 which is located on the south east corner of Yucaipa Boulevard and 7th Street in the City of Yucaipa, San Bernardino County.

The Yucaipa Valley Water District has been involved in the review process for this project and has established the following development related project files: P-65-306 / Work Order 65-20898.

AGREEMENT

NOW, THEREFORE, in consideration of the mutual promises and covenants contained herein, the DEVELOPER and the DISTRICT agree as follows:

1. During the course of construction, all construction work of the Facilities to be conveyed to, and owned and operated by the DISTRICT ("Facilities"), will be inspected by DISTRICT personnel and/or by DISTRICT's consultants at the sole cost of the DEVELOPER. The DEVELOPER acknowledges that the DISTRICT's inspector(s) shall have the authority to require that any and all unacceptable materials, workmanship, construction and/or installation not in conformance with standard practices, qualities and standards in the industry, as reasonably determined by the DISTRICT, shall be replaced, repaired or corrected at DEVELOPER's sole cost and expense.
2. The DEVELOPER hereby agrees that Facilities shall be planned, designed and constructed, at its sole cost and expense, in accordance with all applicable laws, rules, regulations and policies, including the DISTRICT's Design Manual and Construction Guidelines, in effect at the time of construction. The DEVELOPER shall strictly comply with all applicable law, rules and regulations, concerning the provision of services, materials and the payment of wages. The DEVELOPER shall keep fully informed of and obey all laws, rules and regulations, and shall indemnify the DISTRICT against any liability arising from DEVELOPER's violation of any such law, rule or regulation.
3. Prior to proceeding with any construction, the DEVELOPER shall schedule and conduct a preconstruction conference with the DISTRICT's Engineer and/or designees or agents.
4. Ownership; Operation and Maintenance: Once constructed and accepted by the DISTRICT, title to the Facilities (and associated right-of-way) shall be conveyed by the DEVELOPER to the DISTRICT, and the DISTRICT will operate and maintain the Facilities and will provide service to the DEVELOPER's Property in accordance with the DISTRICT's rules and regulations and the provisions of this Agreement.
 - a. General Grading and Construction Water Needs: Due to the current drought conditions, this Project will be required to use Recycled Water for all construction water needs including but not limited to, pre-watering, grading, dust control, trench line construction and backfill procedures. Potable water needs for testing purposes of new potable water mains are required to be scheduled with the DISTRICT a minimum of 48-hours ahead of the anticipated use.
 - b. Potable Water: The Project requires a new domestic water service and fire suppression system service to be installed off of the existing 12-inch potable water mainline in Yucaipa Boulevard. The DEVELOPER shall be fully responsible for the costs related to the construction and installation of the two new services pursuant to the DISTRICT requirements and standards. The service tap location and design shall be located in a manner approved by the DISTRICT prior to construction.
 - i. The DEVELOPER shall provide the final approved building plumbing plans and complete the DISTRICT's Fixture Unit Spreadsheets for review and approval by the DISTRICT prior to the start of construction.

- ii. The DEVELOPER shall provide the final approved site plumbing plans for DISTRICT review and use with the Recycled Water application and permitting process.

c. Recycled Water: The Project requires a new recycled irrigation service to be installed off of the existing 12-inch recycled water mainline in 7th Street. The DEVELOPER shall be fully responsible for the costs related to the construction and installation of the new service pursuant to the DISTRICT requirements and standards. The service tap location shall be located in a manner approved by the DISTRICT prior to construction.

- i. A reciprocal use agreement will be necessary across Parcel 2 for Parcel 1 of Parcel Map Number 19647 for the irrigation service.
- ii. The DEVELOPER shall prepare the necessary irrigation design plans for review and approval by the DISTRICT prior to construction.
- iii. The DEVELOPER shall adhere to the current DISTRICT Rules and Regulations as they pertain to the use of Recycled Water on the site. The DEVELOPER shall also execute the DISTRICT's Recycled Water User Agreement and Record the necessary documents to the property.

d. Sewer: The Project requires a new commercial sewer lateral to be installed off of the existing 8-inch sewer mainline in DISTRICT Easement 2-U. The DEVELOPER shall be fully responsible for the costs related to the construction and installation of the new 6-inch sewer lateral service pursuant to the DISTRICT requirements and standards. The sewer lateral location shall be located in a manner approved by the DISTRICT prior to construction.

- i. The DEVELOPER shall provide the final approved plumbing plans and complete the DISTRICT's Fixture Unit Spreadsheets and Wastewater Questionnaire for review and approval by the DISTRICT prior to the start of construction.

5. The DEVELOPER shall be solely responsible for the payment to the DISTRICT of all fees, charges, costs and expenses related to this development. In the event of a change in the DISTRICT's schedule of fees and charges, such change shall automatically be incorporated into this Agreement as though set forth in full.

6. The DEVELOPER and the DISTRICT agree that the DISTRICT, its employees, agents and officials, shall be fully protected and indemnified from any loss, injury, damage, claim, fine, penalty, lawsuit, cost, expense, attorneys' fees, litigation costs, defense costs, court costs or any other costs arising out of or in any way related to the performance by DEVELOPER of this Agreement. Accordingly, the provisions of this indemnity provision are intended by the parties to be interpreted and construed to provide the fullest protection possible under the law to the DISTRICT. DEVELOPER acknowledges that the DISTRICT would not enter into this Agreement in the absence of this commitment from the DEVELOPER to indemnify and protect the DISTRICT as set forth herein.

7. Unless extended by mutual agreement of the parties in writing, this Agreement shall terminate at 5:00 p.m., on the day before the sixth (6th) anniversary date of this Agreement; provided, however, that this Agreement shall automatically terminate, as follows:

- a. Upon expiration of the recorded map regardless of the decision to extend the expiration date by the land use authority; or
- b. Immediately, upon abandonment by the DEVELOPER of the DEVELOPER's project and/or the work hereunder; or
- c. Within 45 days of the date of the issuance of a Notice of Default by the DISTRICT to the DEVELOPER in the event the DEVELOPER fails or refuses to perform, keep or observe any of the terms, conditions or covenants set forth in this Agreement.

In the event of termination, and in order to counteract any threat to the public's health, safety or welfare, the DISTRICT shall have the right, without liability to the DEVELOPER, to complete, at the DEVELOPER's non-reimbursable expense, all or a portion of the Facilities constructed pursuant to this Agreement.

Notwithstanding the foregoing, the Indemnification clauses contained herein shall survive the termination of this Agreement.

8. This Agreement may be amended in writing signed by both parties.
9. However, this Agreement shall not be assignable.
10. This Agreement is not intended to create, and nothing herein contained shall be construed to create, an association, a trust, a joint venture, a partnership or other entity of any kind, and either party is intended to be the agent, employee or partner of the other. This Agreement is only for the benefit of the parties to this Agreement, their successors and assigns. No other person or entity shall be entitled to rely on any matter set forth in this Agreement.
11. All disputes related to this Agreement shall first be submitted to non-binding mediation.

IN WITNESS WHEREOF, the parties have executed is Agreement to be effective on the day and year first above written.

DEVELOPER

YUCAIPA VALLEY WATER DISTRICT

By _____

By _____

George Bunting

Print Name

Print Name

Project Coordinator

Title

Board President

Title

SFP-E, LLC

Company

Yucaipa Valley Water District

Agency



Director Memorandum 16-047

Date: May 18, 2016

Prepared By: Joseph Zoba, General Manager

Subject: Recognition of Bob Wall on the Occasion of his Retirement from the Yucaipa Valley Water District

Recommendation: That the Board adopts Resolution No. 2016-15.

On June 5, 2016, Bob Wall will be retiring from the Yucaipa Valley Water District as an Operations Manager after twenty-six years of service. Mr. Wall has exemplified professionalism, dedication and commitment to our community throughout his career with the Yucaipa Valley Water District.

The purpose of this agenda item is to provide Mr. Wall with a resolution recognizing his service to the District and our community.

RESOLUTION NO. 2016-15

**A RESOLUTION OF THE YUCAIPA VALLEY WATER DISTRICT
HONORING ROBERT WALL ON THE OCCASION OF HIS RETIREMENT**

WHEREAS, Mr. Robert “Bob” Wall was first employed by the Yucaipa Valley Water District on June 4, 1990, and will be retiring on June 5, 2016; and

WHEREAS, Mr. Robert Wall started working for the Yucaipa Valley Water District in the water production department starting as a Water Production Operator I and steadily advanced to an Operations Manager overseeing all aspects of the drinking water system and the recycled water system; and

WHEREAS, during his tenure, Mr. Robert Wall has been instrumental in maintaining the mechanical operation of numerous wells, booster stations, and treatment systems such as the Yucaipa Valley Regional Water Filtration Facility; and

WHEREAS, throughout his tenure of service to the Yucaipa Valley Water District, Mr. Robert Wall provided exceptional leadership and guidance for the development of a regional emergency communication system that serves as a critical component of the Emergency Response Network for the Inland Empire; and

WHEREAS, Mr. Robert Wall has always been distinguished and recognized for his outstanding skills, dependability, knowledge, commitment, eagerness to learn, and wide range of experience; and

WHEREAS, retiring from the Yucaipa Valley Water District as an Operations Manager, Mr. Robert Wall will always be remembered by the characteristics he exhibited as a true professional, dedicated employee, and friend.

NOW, THEREFORE, BE IT HEREBY RESOLVED AND ORDERED, that the Board of Directors of the Yucaipa Valley Water District, on behalf of the District staff, does hereby extend its sincere appreciation to Mr. Robert Wall for his years of dedicated service and contributions to the Yucaipa Valley Water District and the community.

BE IT FURTHER RESOLVED that a suitably prepared copy of this resolution is presented to Mr. Robert Wall.

PASSED AND ADOPTED this 18th day of May 2016.

YUCAIPA VALLEY WATER DISTRICT

Lonni Granlund, President Board of Directors

ATTEST:

Joseph B. Zoba, General Manager

Board Reports & Director Comments



Yucaipa Valley Water District

Director Comments



Yucaipa Valley Water District



FACTS ABOUT THE YUCAIPA VALLEY WATER DISTRICT

Service Area Size: 40 square miles (sphere of influence is 68 square miles)

Elevation Change: 3,140 foot elevation change (from 2,044 to 5,184 feet)

Number of Employees: 5 elected board members
62 full time employees

Operating Budget: Water Division - \$13,397,500
Sewer Division - \$11,820,000
Recycled Water Division - \$537,250
Total Annual Budget - \$25,754,750

Number of Services: 12,434 water connections serving 17,179 units
13,559 sewer connections serving 20,519 units
64 recycled water connections

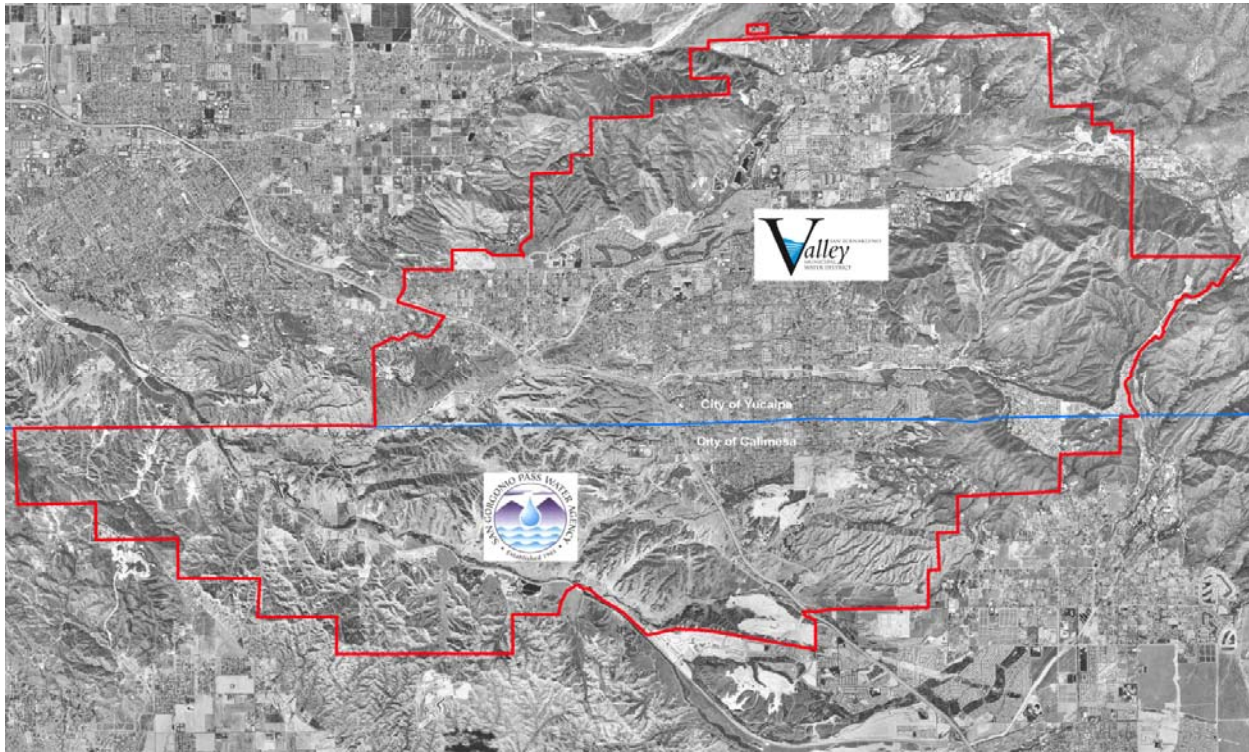
Water System: 215 miles of drinking water pipelines
27 reservoirs - 34 million gallons of storage capacity
18 pressure zones
12,000 ac-ft annual water demand (3.9 billion gallons)
Two water filtration facilities:
- 1 mgd at Oak Glen Surface Water Filtration Facility
- 12 mgd at Yucaipa Valley Regional Water Filtration Facility

Sewer System: 8.0 million gallon treatment capacity - current flow at 4.0 mgd
205 miles of sewer mainlines
5 sewer lift stations
4,500 ac-ft annual recycled water prod. (1.46 billion gallons)

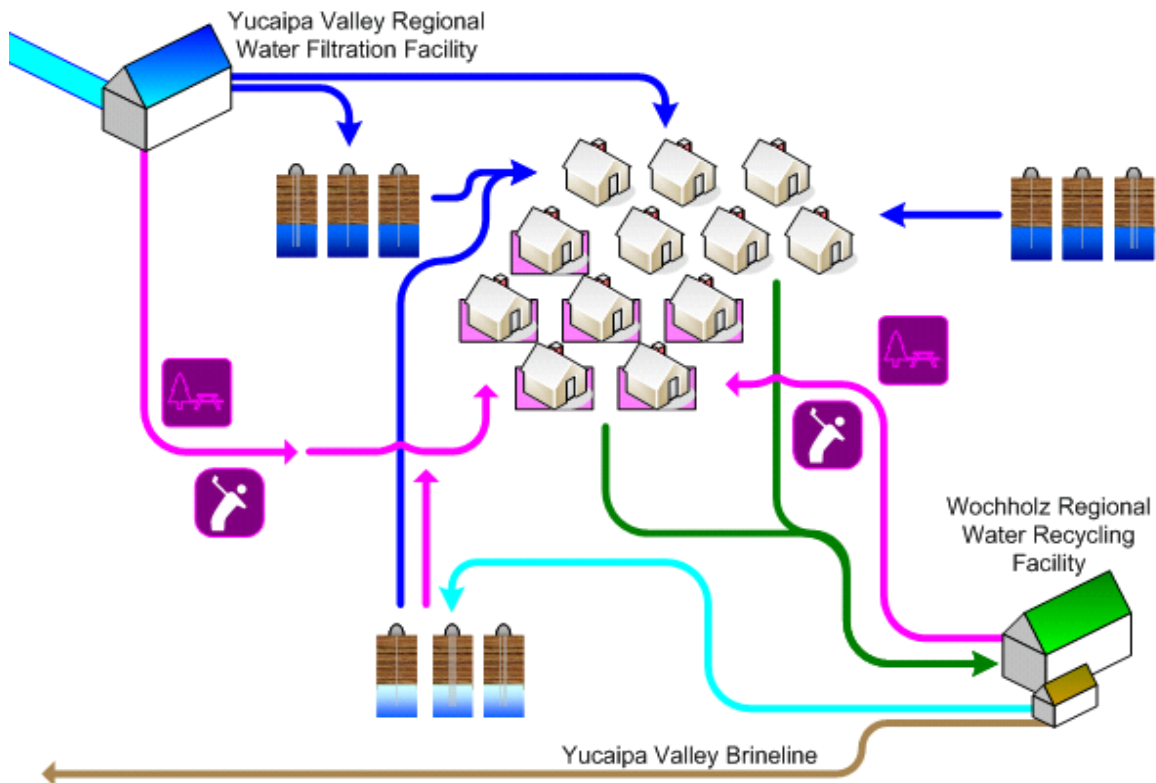
Recycled Water: 22 miles of recycled water pipelines
5 reservoirs - 12 million gallons of storage
1,200 ac-ft annual recycled demand (0.4 billion gallons)

Brine Disposal: 2.2 million gallon desalination facility at sewer treatment plant
1.108 million gallons of Inland Empire Brine Line capacity
0.295 million gallons of treatment capacity in Orange County

State Water Contractors: San Bernardino Valley Municipal Water District
San Geronimo Pass Water Agency



Sustainability Plan: A Strategic Plan for a Sustainable Future: The Integration and Preservation of Resources, adopted on August 20, 2008.





THE MEASUREMENT OF WATER PURITY

One part per hundred is generally represented by the percent (%).
This is equivalent to about fifteen minutes out of one day.

One part per thousand denotes one part per 1000 parts.
This is equivalent to about one and a half minutes out of one day.

One part per million (ppm) denotes one part per 1,000,000 parts.
This is equivalent to about 32 seconds out of a year.

One part per billion (ppb) denotes one part per 1,000,000,000 parts.
This is equivalent to about three seconds out of a century.

One part per trillion (ppt) denotes one part per 1,000,000,000,000 parts.
This is equivalent to about three seconds out of every hundred thousand years.

One part per quadrillion (ppq) denotes one part per 1,000,000,000,000,000 parts.
This is equivalent to about two and a half minutes out of the age of the Earth (4.5 billion years).





GLOSSARY OF COMMONLY USED TERMS

Every profession has specialized terms which generally evolve to facilitate communication between individuals. The routine use of these terms tends to exclude those who are unfamiliar with the particular specialized language of the group. Sometimes jargon can create communication cause difficulties where professionals in related fields use different terms for the same phenomena.

Below are commonly used water terms and abbreviations with commonly used definitions. If there is any discrepancy in definitions, the District's Regulations Governing Water Service is the final and binding definition.

Acre Foot of Water - The volume of water (325,850 gallons, or 43,560 cubic feet) that would cover an area of one acre to a depth of 1 foot.

Activated Sludge Process – A secondary biological sewer treatment process where bacteria reproduce at a high rate with the introduction of excess air or oxygen, and consume dissolved nutrients in the wastewater.

Annual Water Quality Report - The document is prepared annually and provides information on water quality, constituents in the water, compliance with drinking water standards and educational material on tap water. It is also referred to as a Consumer Confidence Report (CCR).

Aquifer - The natural underground area with layers of porous, water-bearing materials (sand, gravel) capable of yielding a supply of water; see Groundwater basin.

Backflow - The reversal of water's normal direction of flow. When water passes through a water meter into a home or business it should not reverse flow back into the water mainline.

Best Management Practices (BMPs) - Methods or techniques found to be the most effective and practical means in achieving an objective. Often used in the context of water conservation.

Biochemical Oxygen Demand (BOD) – The amount of oxygen used when organic matter undergoes decomposition by microorganisms. Testing for BOD is done to assess the amount of organic matter in water.

Biosolids – Biosolids are nutrient rich organic and highly treated solid materials produced by the sewer treatment process. This high-quality product can be used as a soil amendment on farm land or further processed as an earth-like product for commercial and home gardens to improve and maintain fertile soil and stimulate plant growth.

Catch Basin – A chamber usually built at the curb line of a street, which conveys surface water for discharge into a storm sewer.

Capital Improvement Program (CIP) – Projects for repair, rehabilitation, and replacement of assets. Also includes treatment improvements, additional capacity, and projects for the support facilities.

Collector Sewer – The first element of a wastewater collection system used to collect and carry wastewater from one or more building sewer laterals to a main sewer.

Coliform Bacteria – A group of bacteria found in the intestines of humans and other animals, but also occasionally found elsewhere and is generally used as an indicator of sewage pollution.

Combined Sewer Overflow – The portion of flow from a combined sewer system, which discharges into a water body from an outfall located upstream of a wastewater treatment plant, usually during wet weather conditions.

Combined Sewer System– Generally older sewer systems designed to convey both sewage and storm water into one pipe to a wastewater treatment plant.

Conjunctive Use - The coordinated management of surface water and groundwater supplies to maximize the yield of the overall water resource. Active conjunctive use uses artificial recharge, where surface water is intentionally percolated or injected into aquifers for later use. Passive conjunctive use is to simply rely on surface water in wet years and use groundwater in dry years.

Consumer Confidence Report (CCR) - see Annual Water Quality Report.

Cross-Connection - The actual or potential connection between a potable water supply and a non-potable source, where it is possible for a contaminant to enter the drinking water supply.

Disinfection By-Products (DBPs) - The category of compounds formed when disinfectants in water systems react with natural organic matter present in the source water supplies. Different disinfectants produce different types or amounts of disinfection byproducts. Disinfection byproducts for which regulations have been established have been identified in drinking water, including trihalomethanes, haloacetic acids, bromate, and chlorite

Drought - a period of below average rainfall causing water supply shortages.

Dry Weather Flow – Flow in a sanitary sewer during periods of dry weather in which the sanitary sewer is under minimum influence of inflow and infiltration.

Fire Flow - The ability to have a sufficient quantity of water available to the distribution system to be delivered through fire hydrants or private fire sprinkler systems.

Gallons per Capita per Day (GPCD) - A measurement of the average number of gallons of water use by the number of people served each day in a water system. The calculation is made by dividing the total gallons of water used each day by the total number of people using the water system.

Groundwater Basin - An underground body of water or aquifer defined by physical boundaries.

Groundwater Recharge - The process of placing water in an aquifer. Can be a naturally occurring process or artificially enhanced.

Hard Water - Water having a high concentration of minerals, typically calcium and magnesium ions.

Hydrologic Cycle - The process of evaporation of water into the air and its return to earth in the form of precipitation (rain or snow). This process also includes transpiration from plants, percolation into the ground, groundwater movement, and runoff into rivers, streams and the ocean; see Water cycle.

Infiltration – Water other than sewage that enters a sewer system and/or building laterals from the ground through defective pipes, pipe joints, connections, or manholes. Infiltration does not include inflow. See *Inflow*.

Inflow - Water other than sewage that enters a sewer system and building sewer from sources such as roof vents, yard drains, area drains, foundation drains, drains from springs and swampy areas, manhole covers, cross connections between storm drains and sanitary sewers, catch basins, cooling towers, storm waters, surface runoff, street wash waters, or drainage. Inflow does not include infiltration. See *Infiltration*.

Inflow / Infiltration (I/I) – The total quantity of water from both inflow and infiltration.

Mains, Distribution - A network of pipelines that delivers water (drinking water or recycled water) from transmission mains to residential and commercial properties, usually pipe diameters of 4" to 16".

Mains, Transmission - A system of pipelines that deliver water (drinking water or recycled water) from a source of supply the distribution mains, usually pipe diameters of greater than 16".

Meter - A device capable of measuring, in either gallons or cubic feet, a quantity of water delivered by the District to a service connection.

Overdraft - The pumping of water from a groundwater basin or aquifer in excess of the supply flowing into the basin. This pumping results in a depletion of the groundwater in the basin which has a net effect of lowering the levels of water in the aquifer.

Peak Flow – The maximum flow that occurs over a specific length of time (e.g., daily, hourly, instantaneously).

Pipeline - Connected piping that carries water, oil or other liquids. See Mains, Distribution and Mains, Transmission.

Point of Responsibility, Metered Service - The connection point at the outlet side of a water meter where a landowner's responsibility for all conditions, maintenance, repairs, use and replacement of water service facilities begins, and the District's responsibility ends.

Potable Water - Water that is used for human consumption and regulated by the California Department of Public Health.

Pressure Reducing Valve - A device used to reduce the pressure in a domestic water system when the water pressure exceeds desirable levels.

Pump Station - A drinking water or recycled water facility where pumps are used to push water up to a higher elevation or different location.

Reservoir - A water storage facility where water is stored to be used at a later time for peak demands or emergencies such as fire suppression. Drinking water and recycled water systems will typically use concrete or steel reservoirs. The State Water Project system considers lakes, such as Shasta Lake and Folsom Lake to be water storage reservoirs.

Runoff - Water that travels downward over the earth's surface due to the force of gravity. It includes water running in streams as well as over land.

Sanitary Sewer System - Sewer collection system designed to carry sewage, consisting of domestic, commercial, and industrial wastewater. This type of system is not designed nor intended to carry water from rainfall, snowmelt, or groundwater sources. See *Combined Sewer System*.

Sanitary Sewer Overflow – Overflow from a sanitary sewer system caused when total wastewater flow exceeds the capacity of the system. See *Combined Sewer Overflow*.

Santa Ana River Interceptor (SARI) Line – A regional brine line designed to convey 30 million gallons per day of non-reclaimable wastewater from the upper Santa Ana River basin to the sewer treatment plant operated by Orange County Sanitation District.

Secondary Treatment – Biological sewer treatment, particularly the activated-sludge process, where bacteria and other microorganisms consume dissolved nutrients in wastewater.

Supervisory Control and Data Acquisition (SCADA) - A computerized system which provides the ability to remotely monitor and control water system facilities such as reservoirs, pumps and other elements of water delivery.

Service Connection - The water piping system connecting a customer's system with a District water main beginning at the outlet side of the point of responsibility, including all plumbing and equipment located on a parcel required for the District's provision of water service to that parcel.

Sludge – Untreated solid material created by the treatment of sewage.

Smart Irrigation Controller - A device that automatically adjusts the time and frequency which water is applied to landscaping based on real-time weather such as rainfall, wind, temperature and humidity.

Special District - A political subdivision of a state established to provide a public services, such as water supply or sanitation, within a specific geographic area.

Surface Water - Water found in lakes, streams, rivers, oceans or reservoirs behind dams.

Total Suspended Solids (TSS) – The amount of solids floating and in suspension in water or sewage.

Transpiration - The process by which water vapor is released into the atmosphere by living plants.

Trickling Filter – A biological secondary treatment process in which bacteria and other microorganisms, growing as slime on the surface of rocks or plastic media, consume nutrients in primary treated sewage as it trickles over them.

Underground Service Alert (USA) - A free service that notifies utilities such as water, telephone, cable and sewer companies of pending excavations within the area (dial 8-1-1 at least 2 working days before you dig).

Urban Runoff - Water from city streets and domestic properties that typically carries pollutants into the storm drains, rivers, lakes, and oceans.

Valve - A device that regulates, directs or controls the flow of water by opening, closing or partially obstructing various passageways.

Wastewater – Any water that enters the sanitary sewer.

Water Banking - The practice of actively storing or exchanging in-lieu surface water supplies in available groundwater basin storage space for later extraction and use by the storing party or for sale or exchange to a third party. Water may be banked as an independent operation or as part of a conjunctive use program.

Water cycle - The continuous movement water from the earth's surface to the atmosphere and back again; see Hydrologic cycle.

Water Pressure - Pressure created by the weight and elevation of water and/or generated by pumps that deliver water to the tap.

Water Service Line - The pipeline that delivers potable water to a residence or business from the District's water system. Typically the water service line is a 1" to 1½" diameter pipe for residential properties.

Watershed - A region or land area that contributes to the drainage or catchment area above a specific point on a stream or river.

Water Table - The upper surface of the zone of saturation of groundwater in an unconfined aquifer.

Water Transfer - A transaction, in which a holder of a water right or entitlement voluntarily sells/exchanges to a willing buyer the right to use all or a portion of the water under that water right or entitlement.

Water Well - A hole drilled into the ground to tap an underground water aquifer.

Wetlands - Lands which are fully saturated or under water at least part of the year, like seasonal vernal pools or swamps.

Wet Weather Flow – Dry weather flow combined with stormwater introduced into a combined sewer system, and dry weather flow combined with infiltration/inflow into a separate sewer system.





COMMONLY USED ABBREVIATIONS

AQMD	Air Quality Management District
BOD	Biochemical Oxygen Demand
CARB	California Air Resources Board
CCTV	Closed Circuit Television
CWA	Clean Water Act
EIR	Environmental Impact Report
EPA	U.S. Environmental Protection Agency
FOG	Fats, Oils, and Grease
GPD	Gallons per day
MGD	Million gallons per day
O & M	Operations and Maintenance
OSHA	Occupational Safety and Health Administration
POTW	Publicly Owned Treatment Works
PPM	Parts per million
RWQCB	Regional Water Quality Control Board
SARI	Santa Ana River Inceptor
SAWPA	Santa Ana Watershed Project Authority
SBVMWD	San Bernardino Valley Municipal Water District
SCADA	Supervisory Control and Data Acquisition system
SSMP	Sanitary Sewer Management Plan
SSO	Sanitary Sewer Overflow
SWRCB	State Water Resources Control Board
TDS	Total Dissolved Solids
TMDL	Total Maximum Daily Load
TSS	Total Suspended Solids
WDR	Waste Discharge Requirements
YVWD	Yucaipa Valley Water District