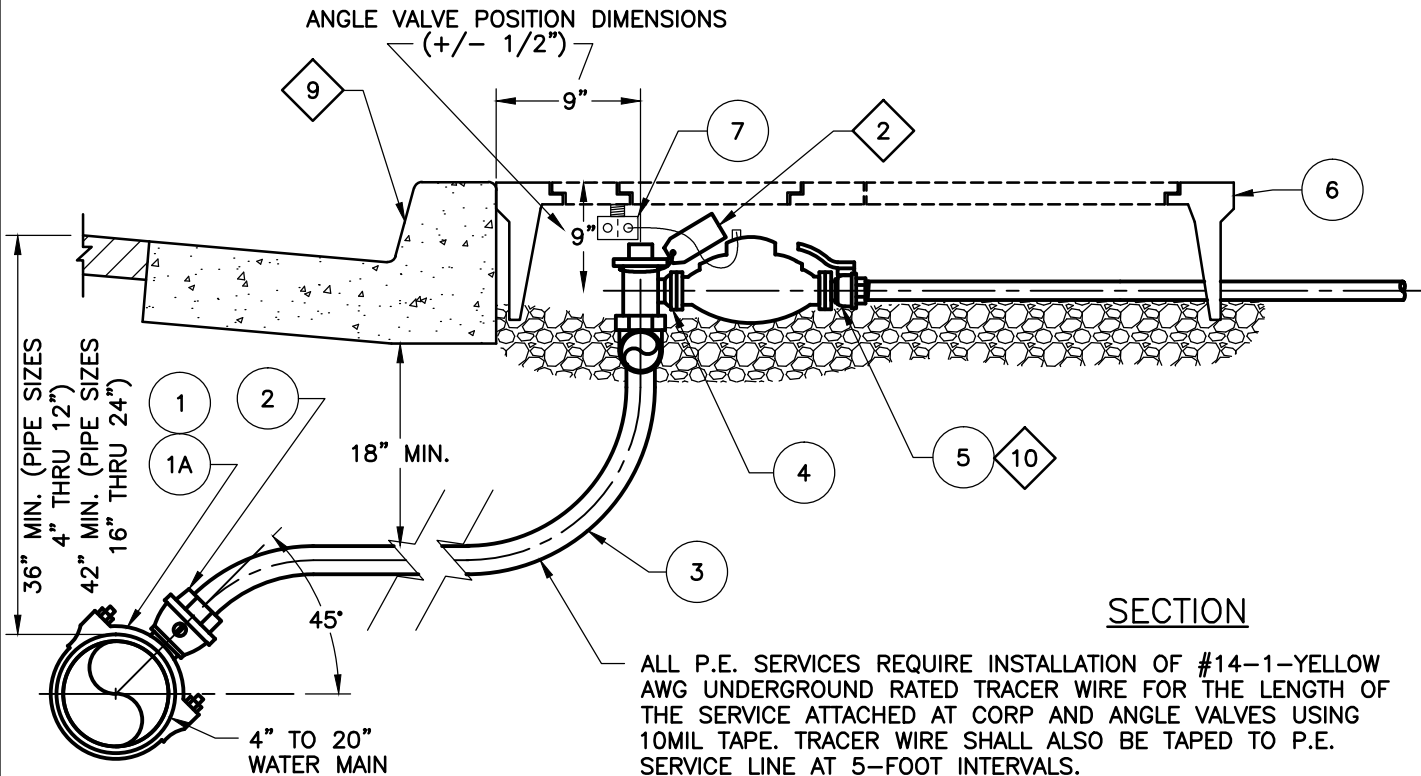


ALL ON SITE RECYCLED PLUMBING SHALL BE SCH 40 "PURPLE" PLASTIC PIPE PER YVWD STANDARDS (WITH RECYCLED WATER MARKING)

PLAN



ALL P.E. SERVICES REQUIRE INSTALLATION OF #14-1-YELLOW AWG UNDERGROUND TRACER WIRE FOR THE LENGTH OF THE SERVICE ATTACHED AT CORP AND ANGLE VALVES USING 10MIL TAPE. TRACER WIRE SHALL ALSO BE TAPED TO P.E. SERVICE LINE AT 5-FOOT INTERVALS.

SEE SHEET 2 OF 2 FOR NOTES AND LIST OF MATERIALS.

SECTION

3/4" RECYCLED WATER DUAL METER SERVICE FOR ADJOINING RESIDENCES

2017



Yucaipa Valley Water District

Approved by the Yucaipa Valley Water District Board of Directors on October 17, 2017 as Resolution No. 2017-24

R-5

Sheet 1 of 2

NOTES:

1. SERVICE SADDLE SHALL NOT BE INSTALLED WITHIN 12-INCHES OF VALVE, COUPLING, JOINT OR FITTING.
- 2 METERS SHALL BE TAGGED. IDENTIFICATION SHALL BE WEATHERPROOF PURPLE PLASTIC, 3-INCHES BY 4-INCHES WITH THE WORDS "WARNING RECYCLED WATER – DO NOT DRINK". IMPRINTING SHALL BE PERMANENT AND BLACK IN COLOR. USE TAGS MANUFACTURED BY T. CHRISTY ENTERPRISES OR APPROVED EQUAL.
3. SET TOP OF METER BOX FLUSH WITH SIDEWALK OR TOP OF CURB AS SHOWN.
4. THE CORPORATION STOP TAP SHALL BE MADE AT A 45° DEGREE ANGLE FROM THE TOP OF PIPE.
5. THE WATER SERVICE SHALL EXTEND PERPENDICULAR TO CENTERLINE OF STREET FROM THE WATER MAIN TO THE STOP.
6. METER BOX SHALL BE SET BEHIND CURB WHERE SIDEWALK IS ADJACENT TO CURB, OR IN PARKWAY BETWEEN CURB AND SIDEWALK.
7. ALL CONNECTIONS TO "PURPLE P.E." TUBING SHALL BE 1-INCH CTS (COPPER TUBE SIZE) COMPRESSION FITTINGS.
8. ALL SERVICE LATERALS WILL BE LOCATED AT PROPERTY LINES.
- 9 LOCATE SERVICE WITH 1-1/2-INCH HIGH "RW" ETCHED IN FACE OF CURB WHERE THE SERVICE CROSSES UNDER THE CURB.
- 10 WATER METER AND MATERIAL ITEMS 5 AND 7 ARE PROVIDED AND SET BY DISTRICT CREWS AT THE DEVELOPERS EXPENSE.

LIST OF MATERIALS

ITEM NO.	SIZE & DESCRIPTION	MANUFACTURER	SPEC. NO.
1	DOUBLE STRAP SERVICE SADDLE I.P. OUTLET (FOR DUCTILE IRON PIPE MAINS)	JONES MUELLER ROMAC FORD	J-979-PIPE O.D. – 1" I.P. BR2B-PIPE O.D.- I.P. 100 202BS-PIPE O.D. – 1" I.P. 202BS-PIPE O.D. – 1" I.P.
1A	CAST SERVICE SADDLE WITH I.P. OUTLET	ROMAC FORD MUELLER	202S-PIPE O.D. – 1" I.P. F-202-PIPE O.D.- 1" I.P. DR2A-PIPE O.D.- I.P. 100
2	BRONZE CORPORATION STOP (MIP) THREAD X COMPRESSION (CTS)	JONES MUELLER AY McDONALD FORD	E-1935SG B-25028N 74704BQ FB1100
3	1" PURPLE POLYETHYLENE TUBING-CTS	WESFLEX	1" SDR 9 LAVENDER
4	BRONZE BALL ANGLE METER STOP (W/LOCKWING) – BRANCH ASSEMBLY 7 1/2" CENTER TO CENTER, 1" CTS X 3/4" M (2)	JONES FORD McDONALD	E-2613SG 1"X3/4"X7.5" UVB43-42W-65NL 709U2EW 1"X3/4"X7.5"
5	BRONZE CUSTOMER SERVICE VALVE-METER NUT X F.I.P.	JONES FORD	E-1908 B13-332-HT-NL
6	METER BOX AND COVER WITH READING LID	ARMOR CAST	A6001430PCX12 W/ CHANNEL FOR BOLT DOWN (1)-A6001470 (1)-A6001470DZ-H7 (1)-A6000482
7	AMI TRANSCEIVER (INSTALLED BY DISTRICT)	SENSUS	SMARTPOINT M2 – MODEL 520M (DUAL PORT) – PIT SET

**3/4" RECYCLED WATER DUAL METER SERVICE
FOR ADJOINING RESIDENCES**

2017



Yucaipa Valley Water District

Approved by the Yucaipa Valley Water District Board of Directors on October 17, 2017 as Resolution No. 2017-24

R-5