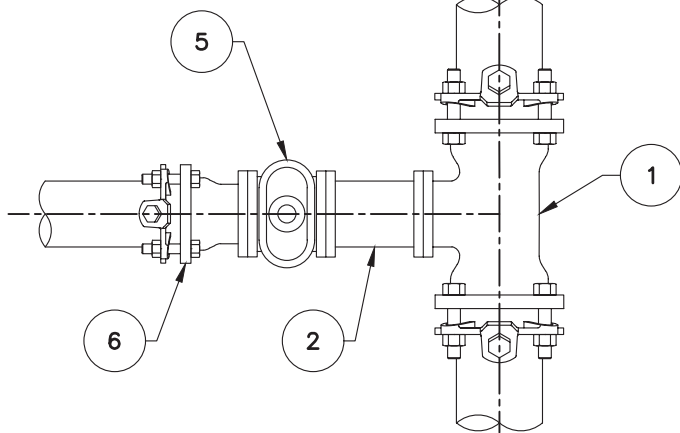
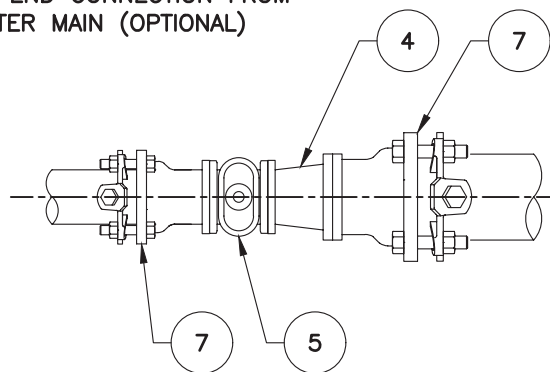


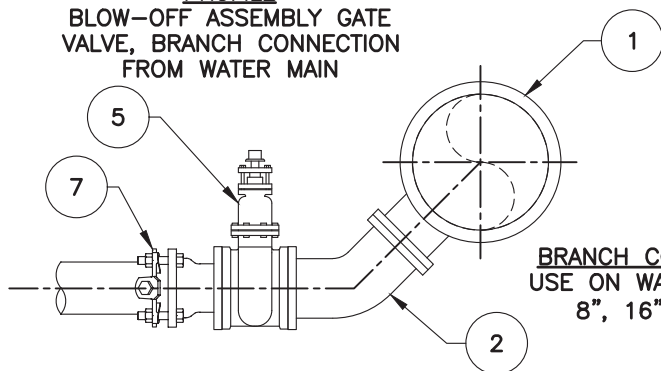
PLAN
BLOW-OFF ASSEMBLY GATE
VALVE, BRANCH CONNECTION
FROM WATER MAIN



PLAN
BLOW-OFF ASSEMBLY GATE
VALVE, END CONNECTION FROM
WATER MAIN (OPTIONAL)

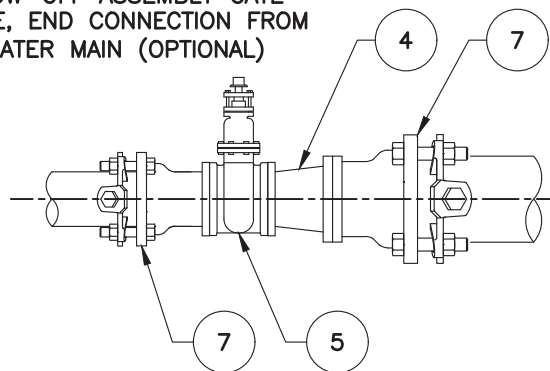


PROFILE
BLOW-OFF ASSEMBLY GATE
VALVE, BRANCH CONNECTION
FROM WATER MAIN

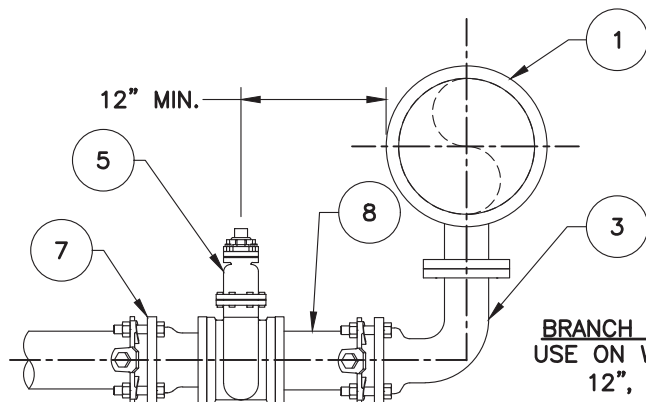


BRANCH CONNECTION CASE A
USE ON WATER MAINS THAT ARE
8", 16" AND 18" ONLY

PROFILE
BLOW-OFF ASSEMBLY GATE
VALVE, END CONNECTION FROM
WATER MAIN (OPTIONAL)



NOTE: SEE STD. DWG. R-26
FOR TRENCH REPAIR AND
PIPE BEDDING DETAIL



BRANCH CONNECTION CASE B
USE ON WATER MAINS THAT ARE
12", 24" AND LARGER

SEE SHEET 3 OF 3 FOR ADDITIONAL NOTES AND LIST OF MATERIALS

6" AND 4" BLOW-OFF ASSEMBLY

2019



Yucaipa Valley
Water District

Approved by the Yucaipa
Valley Water District Board of
Directors on October 1, 2019
as Resolution No. 2019-19


R-19

Sheet 2 of 3

LIST OF MATERIAL

ITEM NO.	SIZE & DESCRIPTION	MANUFACTURER	SPEC. NO.
1	DIP TEE – MJ X MJ X FLG	–	–
2	DIP 45° ELBOW – FLG X MJ WITH MEGA LUG RESTRAINTS	–	–
3	DIP 90° ELBOW – FLG X MJ WITH MEGA LUG RESTRAINTS	–	–
4	DIP FLG X FLG REDUCER	–	–
5	GATE VALVE – FLG X FLG	–	–
6	VALVE BOX PER STD. DWG. W-20	–	–
7	DIP MJ X FLG ADAPTOR	–	–
8	DIP HALF SPOOL – FLG X PE	–	–
9	BREAK OFF VALVE – 8-HOLE	CLOW VALVE CO.	LB1-400A
10	DIP COMPANION FLANGE – 6" (8-HOLE) X 4" THREAD	–	–
11	12" X 4" THREADED GALV. NIPPLE	–	–
12	FIRE PLUG VALVE – 4" X 2-1/2"	JONES	J-344HP
13	CAST IRON HYDRANT CAP WITH CHAIN	–	–
14	4" X 2" FIP THD X COMPANION FLG W/2" BRASS PLUG	–	–
15	METER BOX W/SOLID LID, W/ "RECYCLED" LOGO	AMORCAST	BOX – A6000485 LID – A6000484

NOTES:

1. ALL RECYCLED WATER LINES BELOW GROUND ARE TO BE FULLY BAGGED USING PURPLE POLY SLEEVE.
2.  PRIOR TO PAINTING, BLOW-OFFS SHALL BE PREPARED PER SSPC-SP5. PAINT WITH 2 COATS, 3 TO 5 MILS EACH, OF PANTONE 512C SAFETY PURPLE.
3. PROVIDE "BREAK-OFF" RISER AT COMPANION FLANGE. BOLTS FROM THE "BREAK-OFF" TO THE CHECK VALVE ASSEMBLY MUST BE INSTALLED FROM TOP TO BOTTOM.
4. BLOW-OFFS LOCATED HIGHER THAN 4,000 FT ABOVE SEA LEVEL SHOULD BE A DRY BARREL FIRE HYDRANT.
5. BOTTOM FLUSH INSTALLATION WHERE REQUIRED BY YVWD.
6. BACKFILL UNDER EXISTING CURB WITHIN THE CITY OF YUCAIPA, MUST BE 2 SACK SLURRY PER CITY STANDARDS.
7. ALL HYDRANTS AND BLOW-OFFS SHALL BE LOCATED A MINIMUM OF 3- FEET AWAY FROM THE E.C./B.C. OF DRIVEWAY APPROACHES AND CURB RETURNS FROM INTERSECTIONS.

6" AND 4" BLOW-OFF ASSEMBLY

2019



Yucaipa Valley
Water District

Approved by the Yucaipa
Valley Water District Board of
Directors on October 1, 2019
as Resolution No. 2019-19

R-19

Sheet 3 of 3