

NOTES:

POTABLE WATER LINE SIZE TO BE DETERMINED BY Y.V.W.D.

PLAN SCALE SIZES ARE REQUIRED TO BE DESIGNED AT 1:40. SPECIAL CONSTRUCTION DETAILS MAY BE ADJUSTED AS NECESSARY FOR DESIGN AND CONSTRUCTION PURPOSES.

ALL PLAN SHEETS SHALL BE ON 24-INCH BY 36-INCH ARCHITECTURAL SHEET SIZE D.

ALL PROJECTS SHALL BE SUBMITTED TO THE DISTRICT ON MYLAR PRIOR TO CONSTRUCTION.

ALL PROJECTS, UPON COMPLETION, SHALL UPDATE THE MYLAR PLANS AND PROVIDE AUTOCAD FILES FOR DISTRICT USE AND RECORDS UPON COMPLETION.

POTABLE WATER PIPELINE LOCATION

2016

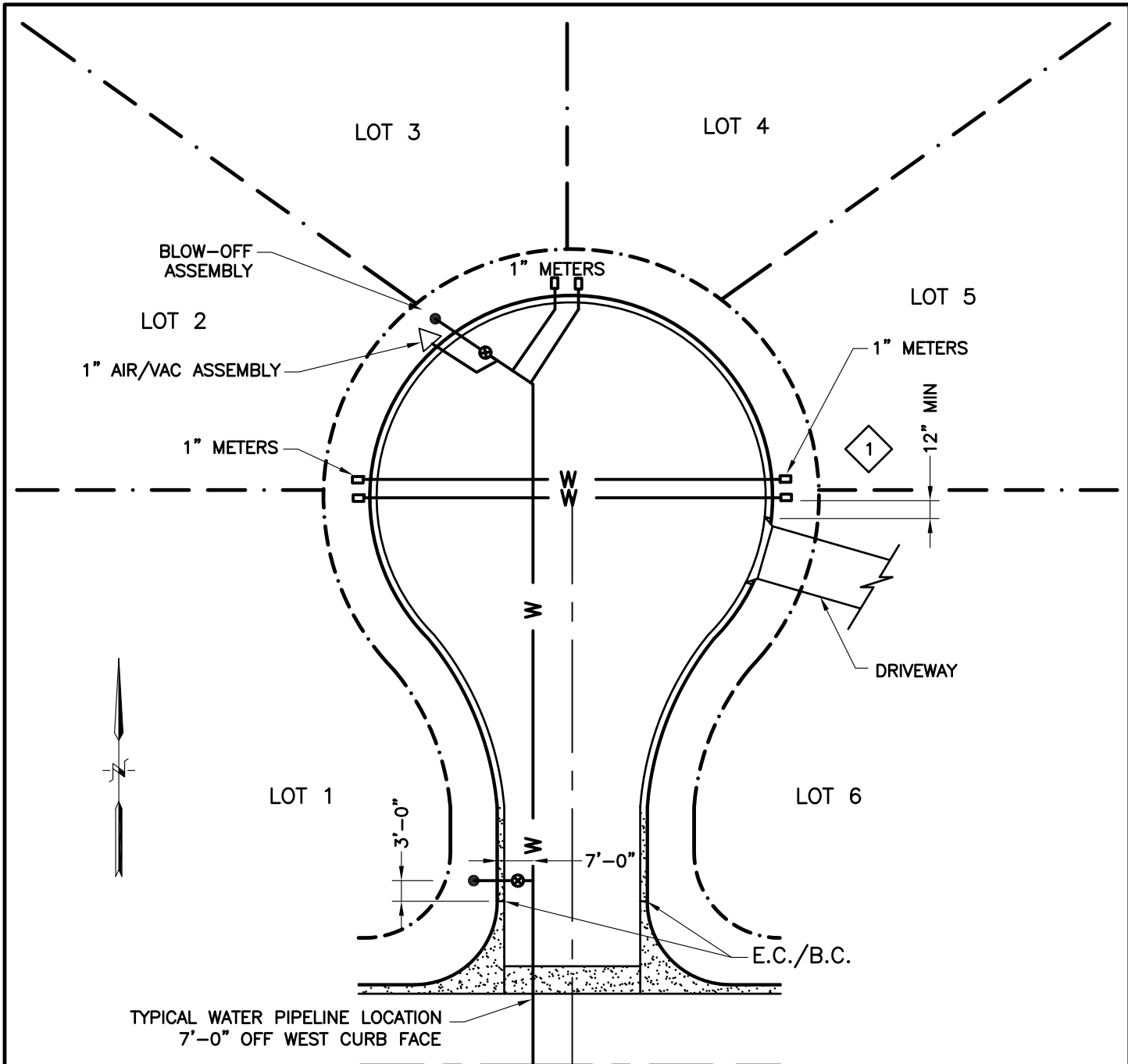


Yucaipa Valley Water District

Approved by the Yucaipa Valley Water District Board of Directors on March 16, 2016 as Resolution No. 2016-13

W-2

Sheet 1 of 2



NOTE:

1 METERS, AIR/VAC ASSEMBLIES, FIRE HYDRANTS, AND BLOW OFFS SHALL NOT BE LOCATED WITHIN 12" OF DRIVEWAY APPROACH OR OTHER UTILITIES.

POTABLE WATER PIPELINE LOCATION

2016



Yucaipa Valley Water District

Approved by the Yucaipa Valley Water District Board of Directors on March 16, 2016 as Resolution No. 2016-13

W-2

Sheet 2 of 2