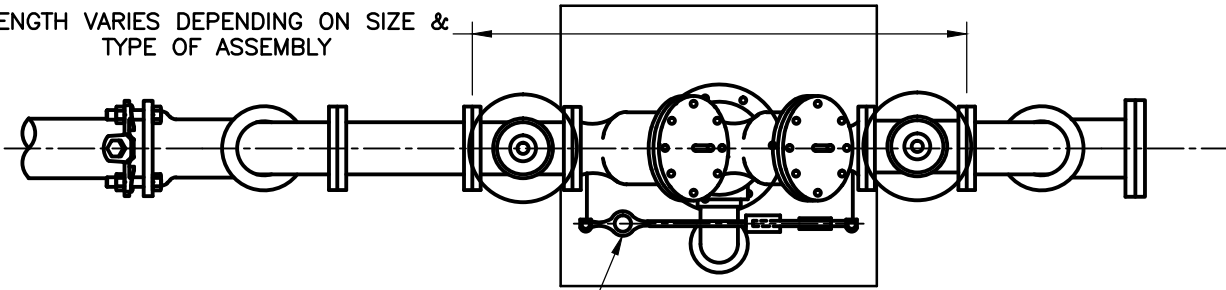
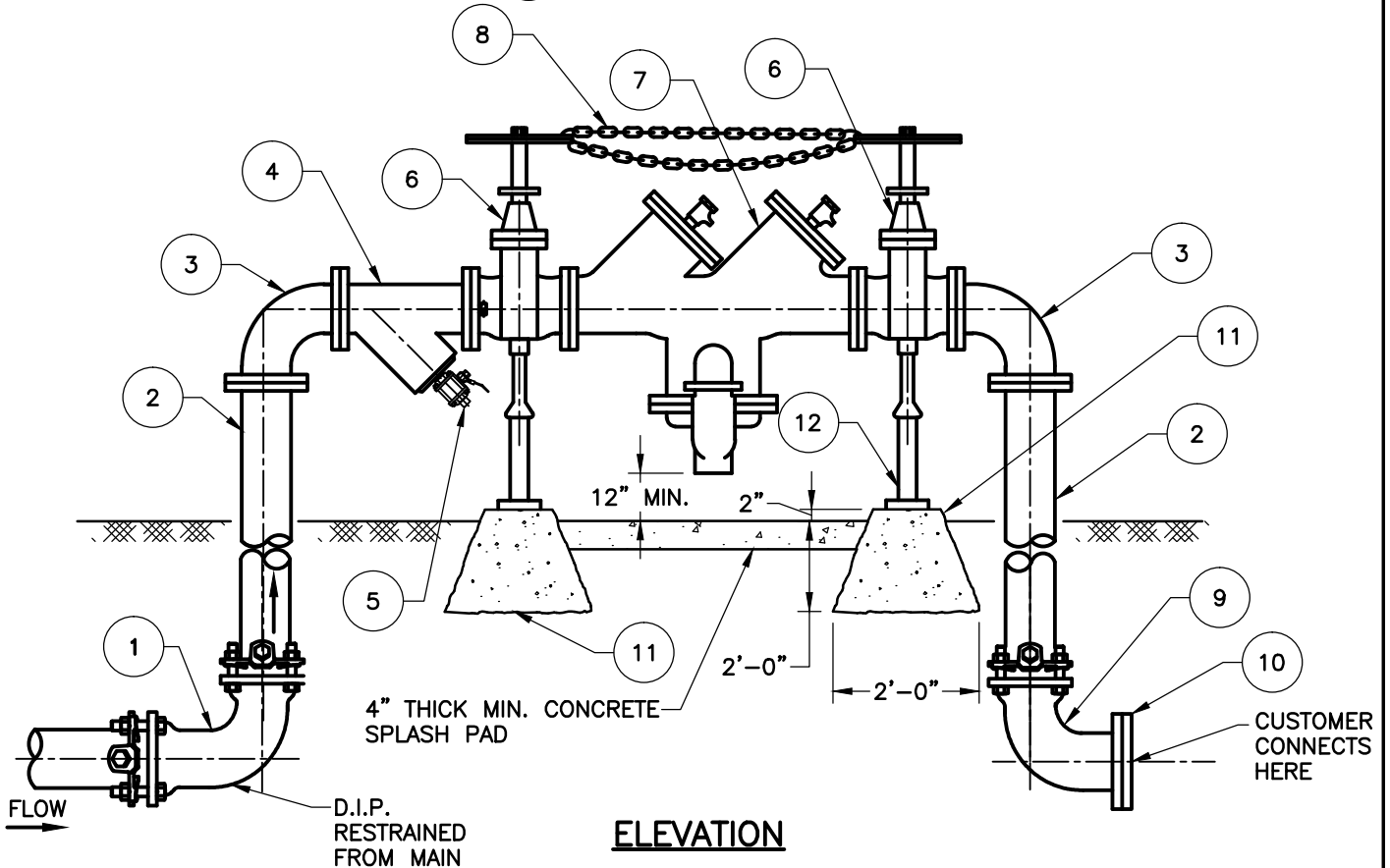


LENGTH VARIES DEPENDING ON SIZE &
TYPE OF ASSEMBLY



PLAN



ELEVATION

NOTES:

1. NOTIFY Y.V.W.D. PRIOR TO INSTALLATION OF UNIT.
2. INSTALLATION SHALL COMPLY WITH THE LATEST PLUMBING CODES AND APPLICABLE LOCAL AGENCY REQUIREMENTS.
3. ALL BACKFLOW ASSEMBLIES ARE TO BE INSTALLED AS CLOSE AS POSSIBLE TO THE METER AND ON THE CUSTOMER SIDE OF RIGHT OF WAY.
4. RESTRAINED MECHANICAL JOINTS (MEGALUG) D.I.P. PIPE TO THE MAIN.
5. SEE SHEET 2 OF 2 FOR LIST OF MATERIALS.

REDUCED PRESSURE BACKFLOW ASSEMBLY WITH BYPASS

2017



Yucaipa Valley Water District

Approved by the Yucaipa Valley Water District Board of Directors on October 17, 2017 as Resolution No. 2017-24

W-12

Sheet 1 of 2

LIST OF MATERIALS

1	D.I.P. 90° ELBOW, MJ X MJ WITH MEGA LUGS
2	D.I.P. HALF SPOOL, FLG X PE
3	D.I.P. 90° ELBOW, FLG x FLG
4	WYE STRAINER
5	FULL SIZE BLOWOFF VALVE WITH PLUG TO PREVENT TAMPERING
6	U.S.C.-APPROVED SHUT-OFF VALVES. SEE SPECIFICATIONS FOR ASSEMBLY
7	APPROVED REDUCED PRESSURE BACKFLOW ASSEMBLY (SIZE PER REQUIREMENT)
8	CHAIN AND LOCK BETWEEN VALVE HANDLES TO PREVENT TAMPERING
9	D.I.P. 90° ELBOW, MJ X FLG WITH MEGA LUG
10	BLIND FLANGE IF NOT CONNECTING IMMEDIATELY AFTER INSTALL OF DEVICE
11	CONCRETE FOOTING
12	GALVANIZED ADJUSTABLE PIPE SUPPORT. SEE YVWD STD. DWG. W-25
13	FACTORY INSTALLED BY-PASS METER ASSEMBLY CONSISTING OF APPRIVED POSITIVE DISPLACEMENT METER, DOUBLE CHECK VALVE AND ASSOCIATED PIPING. BY-PASS METER TO BE SUPPLIED BY THE DISTRICT.

REDUCED PRESSURE BACKFLOW ASSEMBLY WITH BYPASS

2017



Yucaipa Valley Water District

Approved by the Yucaipa
Valley Water District Board of
Directors on October 17, 2017
as Resolution No. 2017-24

W-12

Sheet 2 of 2