

SEE SHEET 3 OF 3 FOR ADDITIONAL NOTES AND LIST OF MATERIALS

BLOW-OFF ASSEMBLY

2017



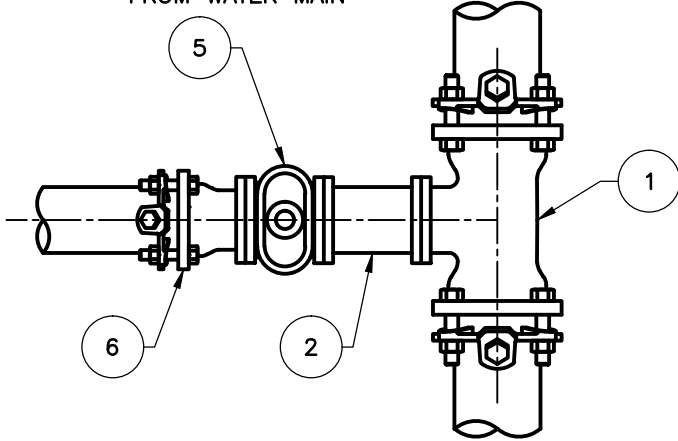
Yucaipa Valley Water District

Approved by the Yucaipa Valley Water District Board of Directors on October 17, 2017 as Resolution No. 2017-24

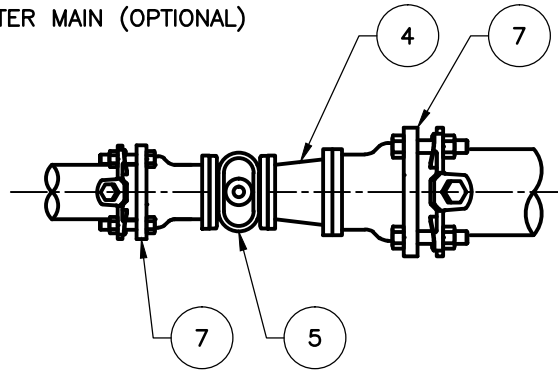
W-19

Sheet 1 of 3

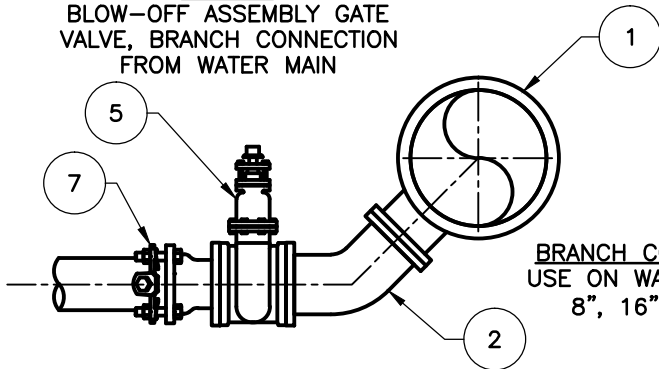
PLAN
BLOW-OFF ASSEMBLY GATE
VALVE, BRANCH CONNECTION
FROM WATER MAIN



PLAN
BLOW-OFF ASSEMBLY GATE
VALVE, END CONNECTION FROM
WATER MAIN (OPTIONAL)

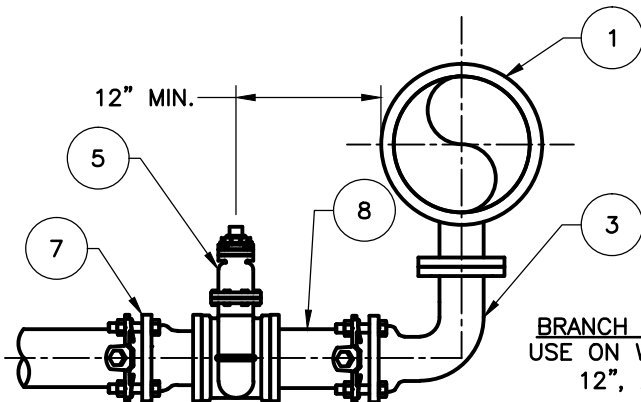
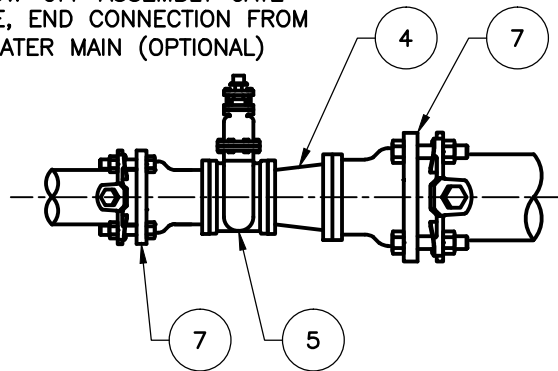


PROFILE
BLOW-OFF ASSEMBLY GATE
VALVE, BRANCH CONNECTION
FROM WATER MAIN



BRANCH CONNECTION CASE A
USE ON WATER MAINS THAT ARE
8", 16" AND 18" ONLY.

PROFILE
BLOW-OFF ASSEMBLY GATE
VALVE, END CONNECTION FROM
WATER MAIN (OPTIONAL)



BRANCH CONNECTION CASE B
USE ON WATER MAINS THAT ARE
12", 24" AND LARGER.

SEE SHEET 3 OF 3 FOR ADDITIONAL NOTES AND LIST OF MATERIALS

BLOW-OFF ASSEMBLY

2017



Yucaipa Valley Water District

Approved by the Yucaipa
Valley Water District Board of
Directors on October 17, 2017
as Resolution No. 2017-24

W-19

Sheet 2 of 3

LIST OF MATERIAL

ITEM NO.	SIZE & DESCRIPTION	MANUFACTURER	SPEC. NO.
1	DIP TEE – MJ X MJ X FLG	–	–
2	DIP 45° ELBOW – FLG X MJ WITH MEGA LUG RESTRAINTS	–	–
3	DIP 90° ELBOW – FLG X MJ WITH MEGA LUG RESTRAINTS	–	–
4	DIP FLG X FLG REDUCER	–	–
5	GATE VALVE – FLG X FLG	–	–
6	VALVE BOX PER STD. DWG. W-20	–	–
7	DIP MJ X FLG ADAPTOR	–	–
8	DIP HALF SPOOL – FLG X PE	–	–
9	BREAK OFF VALVE – 8-HOLE	CLOW VALVE CO.	LBI-400A
10	DIP COMPANION FLANGE – 6" (8-HOLE) X 4" THREAD	–	–
11	12" X 4" THREADED GALV. NIPPLE	–	–
12	FIRE PLUG VALVE – 4" X 2-1/2"	JONES	J-344HP
13	CAST IRON HYDRANT CAP WITH CHAIN	–	–

NOTES:



1. PRIOR TO PAINTING, FIRE HYDRANTS SHALL BE PREPARED PER SSPC-SP5. PAINT WITH 2 COATS, 3 TO 5 MILS EACH, OF RUST-OLEUM 7543 SAFETY YELLOW 025F. ENTIRE HEAD SHALL BE PAINTED RED.
2. PROVIDE "BREAK-OFF" RISER AT COMPANION FLANGE. BOLTS FROM THE "BREAK-OFF" TO THE CHECK VALVE ASSEMBLY MUST BE INSTALLED FROM TOP TO BOTTOM.
3. BLOW-OFFS LOCATED HIGHER THEN 3,500 FT ABOVE SEA LEVEL SHOULD BE A DRY BARREL FIRE HYDRANT.
4. BOTTOM FLUSH INSTALLATION WHERE REQUIRED BY YVWD.
5. BACKFILL UNDER EXISTING CURB WITHIN THE CITY OF YUCAIPA, MUST BE 2 SACK SLURRY PER CITY STANDARDS.
6. ALL HYDRANTS AND BLOW-OFFS SHALL BE LOCATED A MINIMUM OF 3- FEET AWAY FROM THE E.C./B.C. OF DRIVEWAY APPROACHES AND CURB RETURNS FROM INTERSECTIONS.

BLOW-OFF ASSEMBLY

2017



Yucaipa Valley Water District

Approved by the Yucaipa
Valley Water District Board of
Directors on October 17, 2017
as Resolution No. 2017-24

W-19

Sheet 3 of 3